

## **APPENDIX 3.13-A: GENERAL PLAN LAND USE MAPS—SAN JOSE TO CENTRAL VALLEY WYE PROJECT EXTENT RSA**





Source: City of San Jose 2011

MARCH 2019

**Figure 3.13A-1 General Plan Land Use Designations—San Jose Diridon Station Approach Subsection**

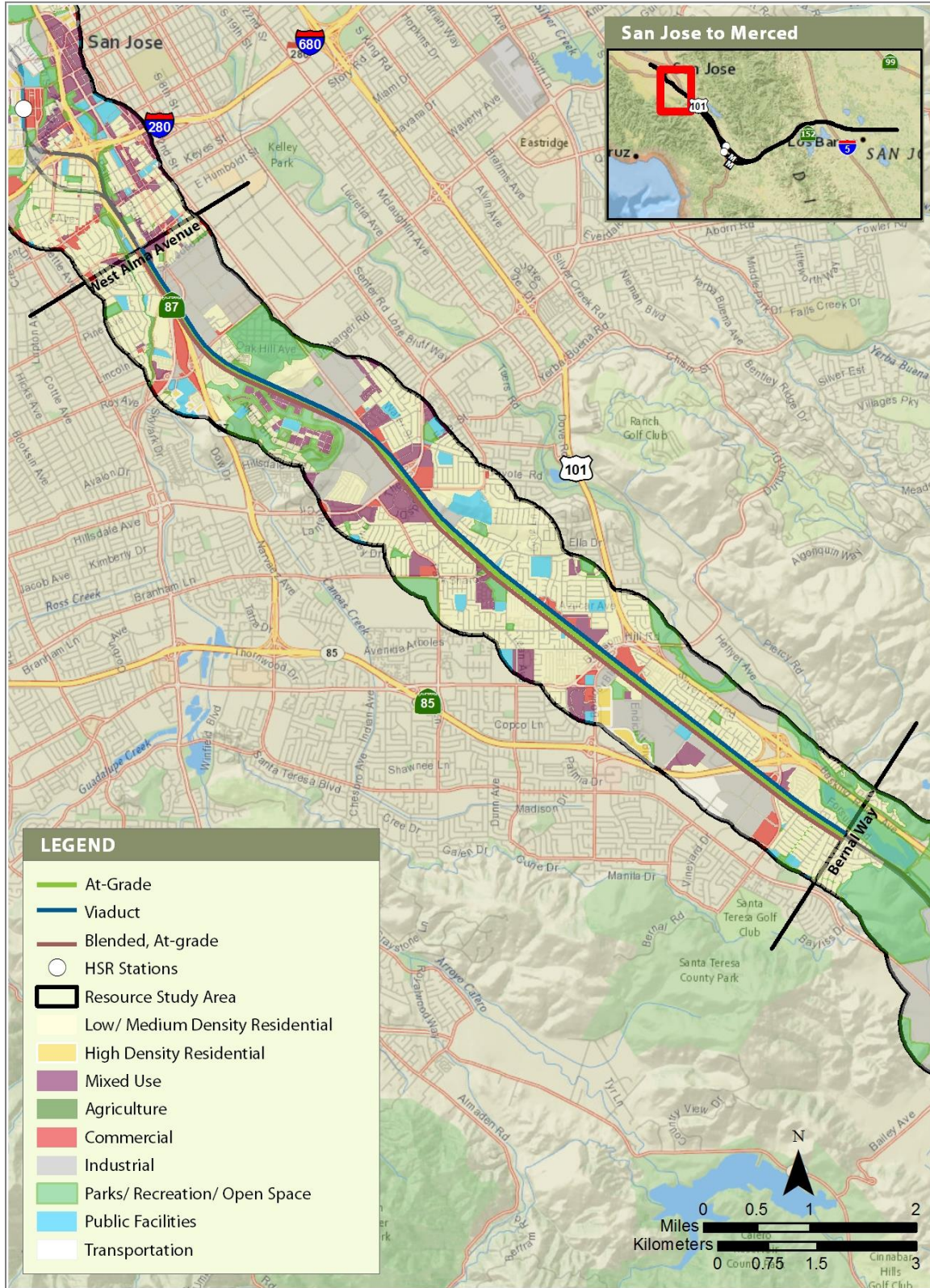
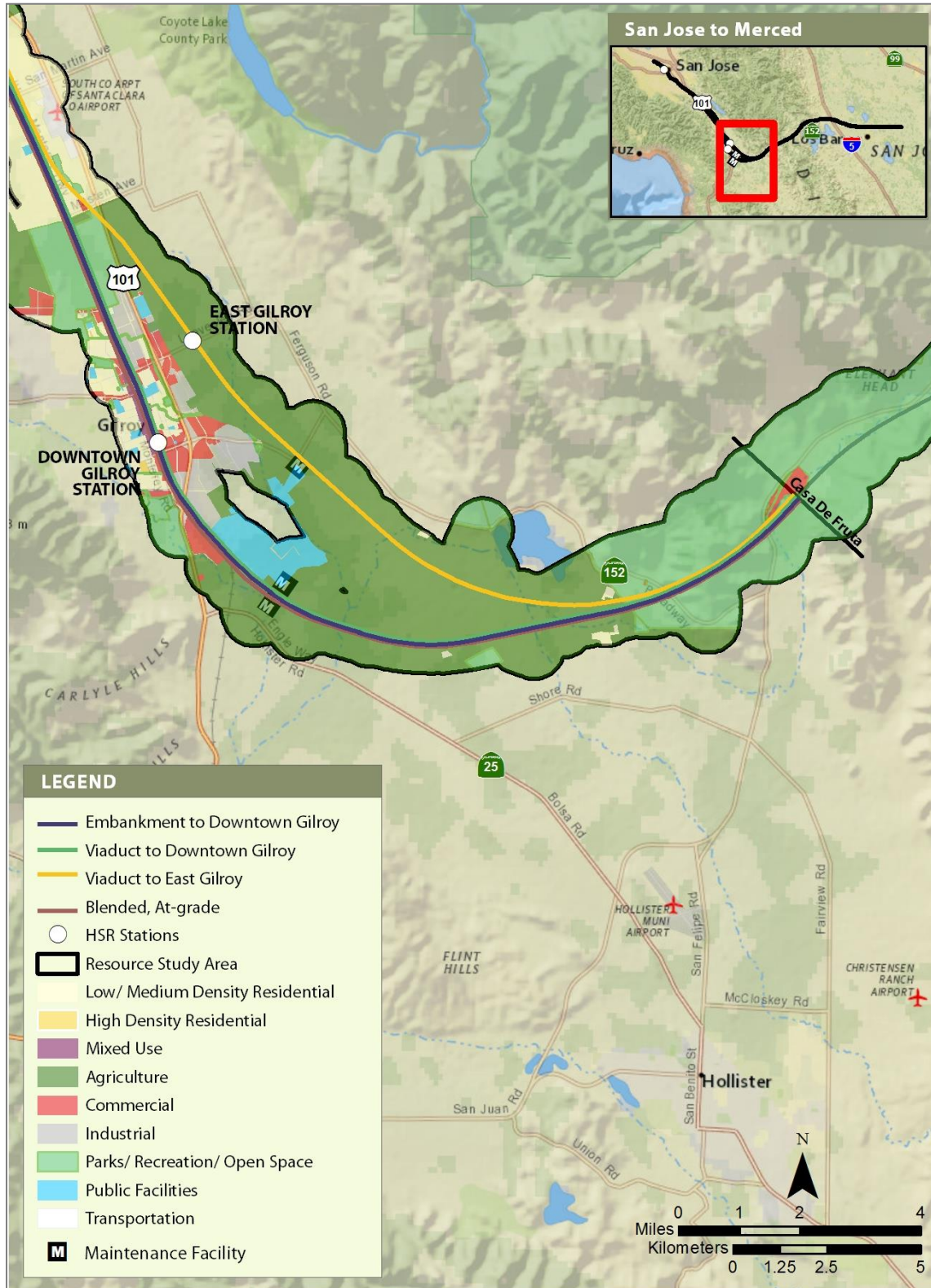


Figure 3.13A-2 General Plan Land Use Designations—Monterey Corridor Subsection

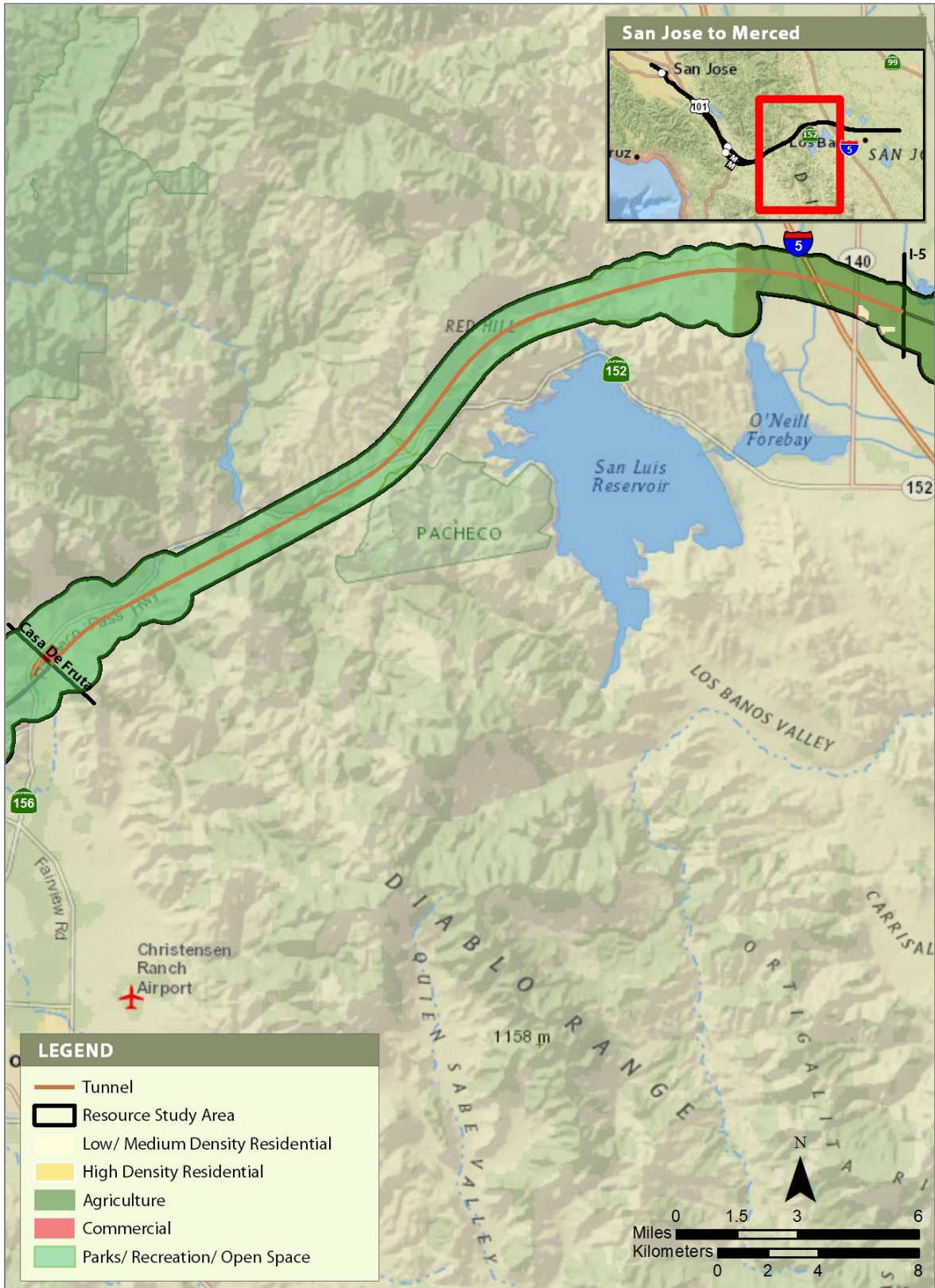




Source: City of Morgan Hill 2016; City of Gilroy 2002; County of San Benito 2015

MARCH 2019

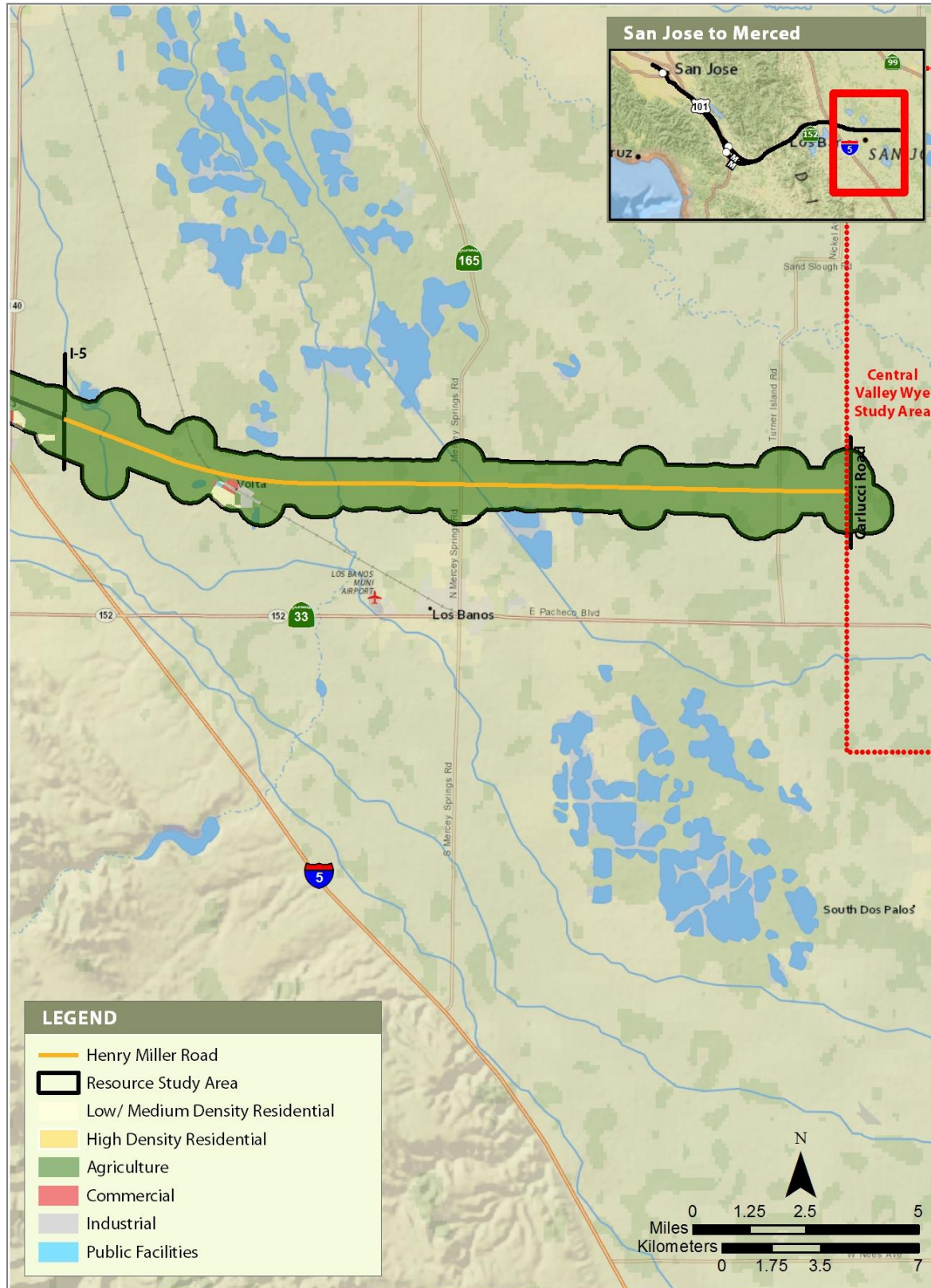
**Figure 3.13A-4 General Plan Land Use Designations—Morgan Hill and Gilroy Subsection (Part 2 of 2)**



Source: County of Santa Clara 1994; County of Merced 2013

MARCH 2019

**Figure 3.13A-5 General Plan Land Use Designations—Pacheco Pass Subsection**



Source: County of Merced 2013

MARCH 2019

**Figure 3.13A-6 General Plan Land Use Designations—San Joaquin Valley Subsection**



## References

- City of Gilroy. 2002. *Gilroy 2002–2020 General Plan*. <http://www.cityofgilroy.org/274/2020-General-Plan> (accessed May 9, 2016, March 23, 2017).
- City of Morgan Hill. 2016. *Morgan Hill 2035 General Plan*. <http://www.morgan-hill.ca.gov/75/General-Plan> (accessed September 5, 2017).
- City of San Jose. 2011. *Envision: San José 2040 General Plan*. Revised March 23, 2016. <https://www.sanjoseca.gov/DocumentCenter/Home/View/474> (accessed June 3, 2016).
- County of San Benito. 2015. *San Benito County 2035 General Plan*. <http://cosb.us/wp-content/uploads/Adopted-2035-GPU.pdf> (accessed May 16, 2016, March 22, 2017).
- County of Santa Clara. 1994. *Santa Clara County General Plan*. [https://www.sccgov.org/sites/dpd/DocsForms/Documents/GP\\_Book\\_A.pdf](https://www.sccgov.org/sites/dpd/DocsForms/Documents/GP_Book_A.pdf) (accessed May 16, 2016, March 22, 2017).
- County of Merced. 2013. *2030 Merced County General Plan*. <http://www.co.merced.ca.us/pdfs/planning/sudpmaps/Volta.pdf> (accessed July 19, 2016, March 22, 2017)