

## APPENDIX 3.11-A: SAFETY AND SECURITY DATA



## APPENDIX 3.11-A: SAFETY AND SECURITY DATA

**Table 1 Number of Fatal and Nonfatal Train Accidents/Incidents by County, 2011–2016**

County	Accidents/Incident			Casualties	
	Total	Type of Accident/Incident		Total Fatalities	Total Nonfatal Conditions
		Fatal	Nonfatal		
Santa Clara	187	37	150	37	129
San Benito	3	1	2	1	2
Merced	82	31	51	31	37
<b>Total</b>	<b>272</b>	<b>69</b>	<b>203</b>	<b>69</b>	<b>168</b>

Sources: FRA 2017a, 2017b, 2017c  
Data are for January 2011 through December 2016.

**Table 2 Types and Causes of Train Accidents/Incidents by County, 2011–2016**

County	Type of Accident/Incident				Cause of Accident/Incident				
	Collision <sup>1</sup>	Derailment	Highway Railroad Crossing	Other <sup>2</sup>	Track	Signal	Human Error	Motive Power/ Equipment	Miscellaneous <sup>3</sup>
Santa Clara	1	3	30	153	1	0	3	1	182
San Benito	0	0	3	0	0	0	0	0	3
Merced	0	1	32	49	0	0	1	0	81
<b>Total</b>	<b>1</b>	<b>4</b>	<b>65</b>	<b>202</b>	<b>1</b>	<b>0</b>	<b>4</b>	<b>1</b>	<b>266</b>

Sources: FRA 2017a, 2017b, 2017c  
Data are for January 2011 through December 2016.

<sup>1</sup> Collision accidents include head-on, rear-end, side, raking, broken-train, or heavy-rail collisions.

<sup>2</sup> Other accidents include trespassing incidents and activities such as getting on or off equipment, doing maintenance work, throwing switches, setting handbrakes, stumbling, and tripping.

<sup>3</sup> Miscellaneous causes of accidents include all accidents described under Other.

**Table 3 At-Grade Crossing Incidents in the Region, 2011–2016**

Cross Street	Railroad	Location	Number of Incidents				Incident Type	Number of Casualties	
			Total <sup>1</sup>	Property Damage <sup>2</sup>	Casualty	Not Reported <sup>3</sup>		Killed	Injured
<b>Santa Clara County</b>									
Charleston Road	PCMZ	Palo Alto	1	0	1	0	Vehicle	1	0
Charleston Street	PCMZ	Palo Alto	1	0	–	1	Pedestrian	---	--
Charleston Road	PCMZ	Palo Alto	1	0	0	0	Vehicle	0	0
East Meadow Drive	PCMZ	Palo Alto	1	0	–	1	Pedestrian	–	–
Charleston Road	PCMZ	Palo Alto	1	0	–	1	Pedestrian	–	–
Charleston Road	PCMZ	Palo Alto	1	0	–	1	Pedestrian	–	–
Charleston Road	PCMZ	Palo Alto	1	0	–	1	Pedestrian	–	–
East Meadow Drive	PCMZ	Palo Alto	1	1	0	0	Vehicle	0	0
East Meadow Drive	PCMZ	Palo Alto	1	1	0	0	Vehicle	0	0
Charleston Road	PCMZ	Palo Alto	1	0	1	0	Vehicle	1	0
Rengstroff Avenue	PCMZ	Mountain View	1	1	0	0	Vehicle	0	0
Castro Street	PCMZ	Mountain View	1	0	0	0	Vehicle	0	0
East Meadow Drive	PCMZ	Mountain View	1	0	1	0	Vehicle	0	1
Mary Avenue	PCMZ	Sunnyvale	1	0	0	0	Pedestrian	0	0
Mary Avenue	PCMZ	Sunnyvale	1	1	0	0	Vehicle	0	0
Mary Avenue	PCMZ	Sunnyvale	1	1	0	0	Vehicle	0	0
North Main Street	ATK	Milpitas	1	0	1	0	Pedestrian	1	0
Agnew Road	ATK	Santa Clara	1	0	1	0	Vehicle	0	1
Agnew Road	ATK	Santa Clara	1	0	1	0	Vehicle	0	1
Southwest Expressway	VTAZ	San Jose	1	0	1	0	Pedestrian	1	0
Race Street	VTAZ	San Jose	1	0	1	0	Pedestrian	0	1
Private	ATK	San Jose	1	0	1	0	Vehicle	0	1
Stokes Street	VTAZ	San Jose	1	0	1	0	Other (not reported)	1	0
Private	ATK	San Jose	1	1	0	0	Vehicle	0	0

Cross Street	Railroad	Location	Number of Incidents				Incident Type	Number of Casualties	
			Total <sup>1</sup>	Property Damage <sup>2</sup>	Casualty	Not Reported <sup>3</sup>		Killed	Injured
Stokes	VTAZ	San Jose	1	0	1	0	Pedestrian	1	0
Virginia Street	PCMZ	San Jose	1	0	1	0	Other (not reported)	1	0
Auzerais Avenue	ACEX	San Jose	1	0	1	0	Pedestrian	0	1
San Pedro Avenue	UPRR	Morgan Hill	1	1	0	0	Vehicle	0	0
Masten Avenue	UPRR	Morgan Hill	1	0	1	0	Vehicle	0	1
Masten Avenue	UPRR	Gilroy	1	0	1	0	Vehicle	1	0
<b>San Benito County</b>									
4th Street	UPRR	Hollister	1	1	0	0	Vehicle	0	0
Private	ATK	San Benito	1	0	1	0	Vehicle	0	2
Private	UPRR	Aromas	1	0	1	0	Vehicle	1	0
<b>Merced County</b>									
Applegate Road	UPRR	Atwater	1	1	0	0	Vehicle	0	0
Hunt Road	CFNR	Gustine	1	1	0	0	Vehicle	0	0
3rd Avenue	CFNR	Gustine	1	1	0	0	Vehicle	0	0
Main Street	UPRR	Livingston	1	0	1	0	Pedestrian	1	0
U Street	BNSF	Merced	1	1	0	0	Other (not reported)	0	0
R Street	BNSF	Merced	1	0	1	0	Vehicle	1	0
Southern Pacific Avenue	UPRR	Merced	1	1	0	0	Vehicle	0	0
K Street	ATK	Merced	1	1	0	0	Vehicle	0	0
Vista Road	UPRR	Merced	1	1	0	0	Vehicle	0	0
Martin Luther King	UPRR	Merced	1	1	0	0	Other (not reported)	0	0
Bear Creek Road	BNSF	Merced	1	1	0	0	Vehicle	0	0
Winton Way	ATK	Winton	1	0	1	0	Vehicle	0	6
Private	CFNR	Los Banos	1	1	0	0	Vehicle	0	0
Plainsburg Road	BNSF	Planada	1	1	0	0	Vehicle	0	0

Cross Street	Railroad	Location	Number of Incidents				Incident Type	Number of Casualties	
			Total <sup>1</sup>	Property Damage <sup>2</sup>	Casualty	Not Reported <sup>3</sup>		Killed	Injured
Olive Avenue	BNSF	Unincorporated Merced County	1	1	0	0	Vehicle	0	0
Bellevue Avenue	BNSF	Unincorporated Merced County	1	1	0	0	Vehicle	0	0
Private	BNSF	Unincorporated Merced County	1	0	0	0	Vehicle	0	0
Shaffer Road	ATK	Unincorporated Merced County	1	1	0	0	Vehicle	0	0
Private	ATK	Unincorporated Merced County	1	0	1	0	Vehicle	1	1
Bellevue Avenue	BNSF	Unincorporated Merced County	1	0	1	0	Vehicle	0	1
Arboleda Drive	BNSF	Unincorporated Merced County	1	1	0	0	Vehicle	0	0
Olive Avenue	BNSF	Unincorporated Merced County	1	1	0	0	Vehicle	0	0
Private	BNSF	Unincorporated Merced County	1	0	1	0	Vehicle	1	0
Private	ATK	Unincorporated Merced County	1	1	0	0	Vehicle	0	0
Vista Road	UPRR	Unincorporated Merced County	1	1	0	0	Vehicle	0	0
Olive Avenue	ATK	Unincorporated Merced County	1	0	1	0	Vehicle	1	1
Franklin Road	BNSF	Unincorporated Merced County	1	1	0	0	Vehicle	0	0
Santa Fe Avenue	ATK	Unincorporated Merced County	1	1	0	0	Vehicle	0	0
Shaffer Road	BNSF	Unincorporated Merced County	1	1	0	0	Vehicle	0	0

Cross Street	Railroad	Location	Number of Incidents				Incident Type	Number of Casualties	
			Total <sup>1</sup>	Property Damage <sup>2</sup>	Casualty	Not Reported <sup>3</sup>		Killed	Injured
Sandy Mush Road	UPRR	Unincorporated Merced County	1	1	0	0	Vehicle	0	0
Winton Way	ATK	Winton	1	0	1	0	Pedestrian	1	1
Winton Way	ATK	Winton	1	0	1	0	Vehicle	1	2
<b>Regional Total</b>			<b>65</b>	<b>30</b>	<b>26</b>	<b>5</b>	<b>All</b>	<b>16</b>	<b>21</b>

Sources: FRA 2016a, 2016b, 2016c

Data are for January 2011 through December 2016

UPRR = Union Pacific Railroad

BNSF = BNSF Railway

CFNR = California Northern Railroad Company

ATK = Amtrak

PCMZ = Caltrain Commuter Railroad Company

ACEX = Altamont Corridor Express

VTAZ = Valley Transportation Authority

<sup>1</sup> The total number of incidences can include reported incidences that did not result in property damages or casualties.

<sup>2</sup> Incidents in which a train struck a vehicle involving no injuries or fatalities are listed in table as "property damage only."

<sup>3</sup> The FRA does not report injury or fatality data for suicides/suicide attempts, and as a result, the number of casualties is unknown. These incidents are listed in the table as "not reported" and the values for casualties, including deaths or injuries, are listed as "--" because the occurrence or numbers of casualties related to these incidents are unknown.

None of the accidents listed above occurred within 0.5 mile of the project alternatives' centerlines.

**Table 4 Hospitals Providing Emergency Care to the Resource Study Area**

Hospital	Address
Kaiser Permanente Santa Clara Medical Center and Medical Offices	700 Lawrence Expressway, Santa Clara, CA 95051
Regional Medical Center of San Jose	225 North Jackson Avenue, San Jose, CA 95116
O'Connor Hospital	2105 Forest Avenue, San Jose, CA 95128
Santa Clara Valley Medical Center	751 South Bascom Avenue, San Jose, CA 95128
Kaiser Permanente San Jose Medical Center	250 Hospital Parkway, San Jose, CA 95119
De Paul Health Center	18550 Depaul Drive, Morgan Hill, CA 95037
St Louise Hospital	9400 No Name Uno, Gilroy, CA 95020
Memorial Hospital Los Banos	520 West I Street, Los Banos, CA 93635

Source: California Office of Statewide Health Planning & Development 2016

**Table 5 Fire Department Equipment in the Resource Study Area**

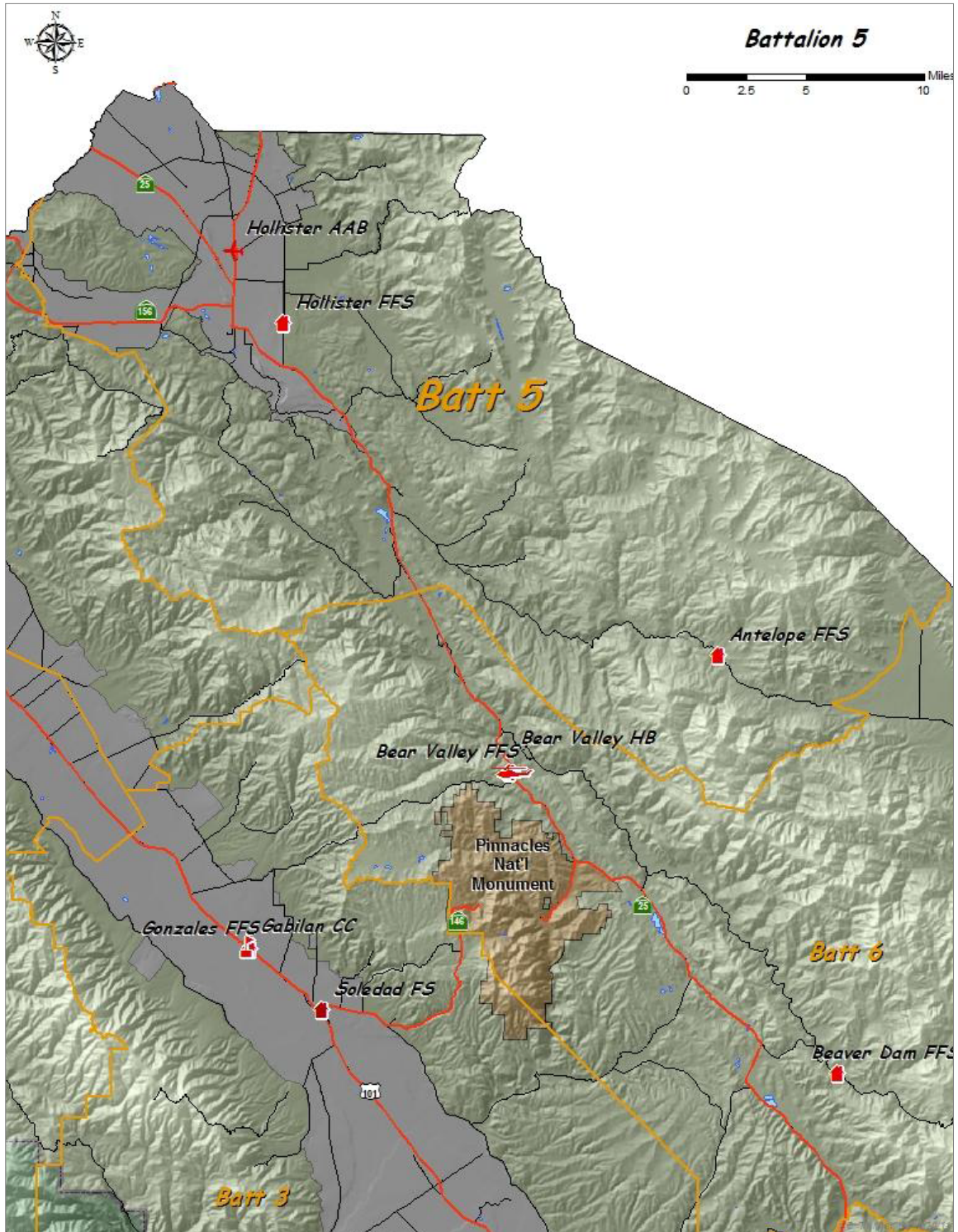
Fire Department	Equipment
<b>Santa Clara County—Local Responsibility Areas</b>	
San Jose Fire Department	<ul style="list-style-type: none"> <li>▪ 30 front line engines</li> <li>▪ 15 relief engines</li> <li>▪ 9 front line trucks</li> <li>▪ 9 relief trucks</li> <li>▪ 7 front line brush patrol apparatus</li> <li>▪ 6 relief brush patrol apparatus</li> <li>▪ 2 front line aircraft rescue and firefighter apparatus</li> <li>▪ 1 relief aircraft rescue and firefighter apparatus</li> <li>▪ 3 front line urban search/rescue and hazmat apparatus</li> <li>▪ 90 auxiliary search/rescue and hazmat apparatus</li> </ul>
Santa Clara County Fire Department	<ul style="list-style-type: none"> <li>▪ 20 engines</li> <li>▪ 3 rescues</li> <li>▪ 3 trucks</li> <li>▪ 6 Type 3 engines</li> <li>▪ 2 Type 6 engines</li> <li>▪ 3 battalions</li> <li>▪ 1 strike team</li> <li>▪ 4 command vehicles</li> <li>▪ 1 U71 operations vehicle</li> <li>▪ 1 U72 EMS vehicle</li> <li>▪ 1 U73 training vehicle</li> <li>▪ 1 U74 56-hour vehicle</li> <li>▪ 1 haz mat 72</li> <li>▪ 1 breath support 72</li> <li>▪ 1 haz mat 172</li> <li>▪ 1 Unit US&amp;R 85</li> <li>▪ 7 trailers</li> <li>▪ 1 engine (#20)</li> <li>▪ 1 hose wagon</li> <li>▪ 1 engine (1936)</li> <li>▪ 1 chemical hand cart</li> <li>▪ 1 squad 1</li> <li>▪ 1 engine (1928)</li> </ul>



Fire Department	Equipment								
Morgan Hill Fire Department	<ul style="list-style-type: none"> <li>▪ 2 Type 1 engine</li> <li>▪ 1 Type 2 aerial ladder truck</li> <li>▪ 1 Type 6 engine</li> </ul>								
Gilroy Fire Department	<ul style="list-style-type: none"> <li>▪ 3 pumper trucks</li> <li>▪ 1 triple combination pumper</li> <li>▪ 1 ladder truck</li> <li>▪ 1 Type 3 truck</li> <li>▪ 2 Type 4 4x4 pumper trucks</li> </ul>								
<b>Santa Clara County—State Responsibility Areas</b>									
CAL FIRE Santa Clara Unit-Morgan Hill Station: Morgan Hill Battalion 1	<ul style="list-style-type: none"> <li>▪ 2 Type 3 engines</li> <li>▪ 1 Type 2 bulldozer</li> </ul>								
CAL FIRE Santa Clara Unit-Morgan Hill Station: Morgan Hill Battalion 7	<ul style="list-style-type: none"> <li>▪ 1 Type 1 engine</li> <li>▪ 1 Water tender</li> <li>▪ 1 Type 3 ALS engine</li> </ul>								
CAL FIRE Santa Clara Unit-Almaden Station: San Jose Battalion 2	<ul style="list-style-type: none"> <li>▪ 1 Type 3 engine</li> </ul>								
CAL FIRE Santa Clara Unit-Coyote Station: Morgan Hill Battalion 1	<ul style="list-style-type: none"> <li>▪ 1 Type 3 engine</li> </ul>								
<b>San Benito County—State Responsibility Areas</b>									
CAL FIRE Northern Region Santa Clara Unit Pacheco Pass: Battalion 1	<ul style="list-style-type: none"> <li>▪ 1 Type 3 paramedic engine</li> <li>▪ 1 Type 3 ALS engine</li> </ul>								
<b>Merced County—State Responsibility Areas</b>									
City of Los Banos Fire Department	<table style="width: 100%; border: none;"> <tr> <td style="width: 60%;">Fire Station 1:</td> <td style="width: 40%;">▪ 1 Type 1 pumper</td> </tr> <tr> <td>▪ 2 fire engines</td> <td>▪ 1 water truck</td> </tr> <tr> <td>▪ 1 ladder truck</td> <td>Fire Station 2:</td> </tr> <tr> <td>▪ 1 EMS/rescue truck</td> <td>▪ 2 fire engines</td> </tr> </table>	Fire Station 1:	▪ 1 Type 1 pumper	▪ 2 fire engines	▪ 1 water truck	▪ 1 ladder truck	Fire Station 2:	▪ 1 EMS/rescue truck	▪ 2 fire engines
Fire Station 1:	▪ 1 Type 1 pumper								
▪ 2 fire engines	▪ 1 water truck								
▪ 1 ladder truck	Fire Station 2:								
▪ 1 EMS/rescue truck	▪ 2 fire engines								

Sources: City of Morgan Hill 2013, 2017; City of Gilroy 2003, 2017; Gilroy Fire Department 2016a, 2016b, 2016c; City of Los Banos 2017; City of San Jose 2015, 2016; San Jose Fire Department 2014, 2016a, 2016b; Merced County Fire Department 2017; County of San Benito 2015a, 2015b; Santa Clara County Fire Department 2016  
 US&R = Urban Search and Rescue  
 ALS = advanced life support  
 EMS = emergency medical services

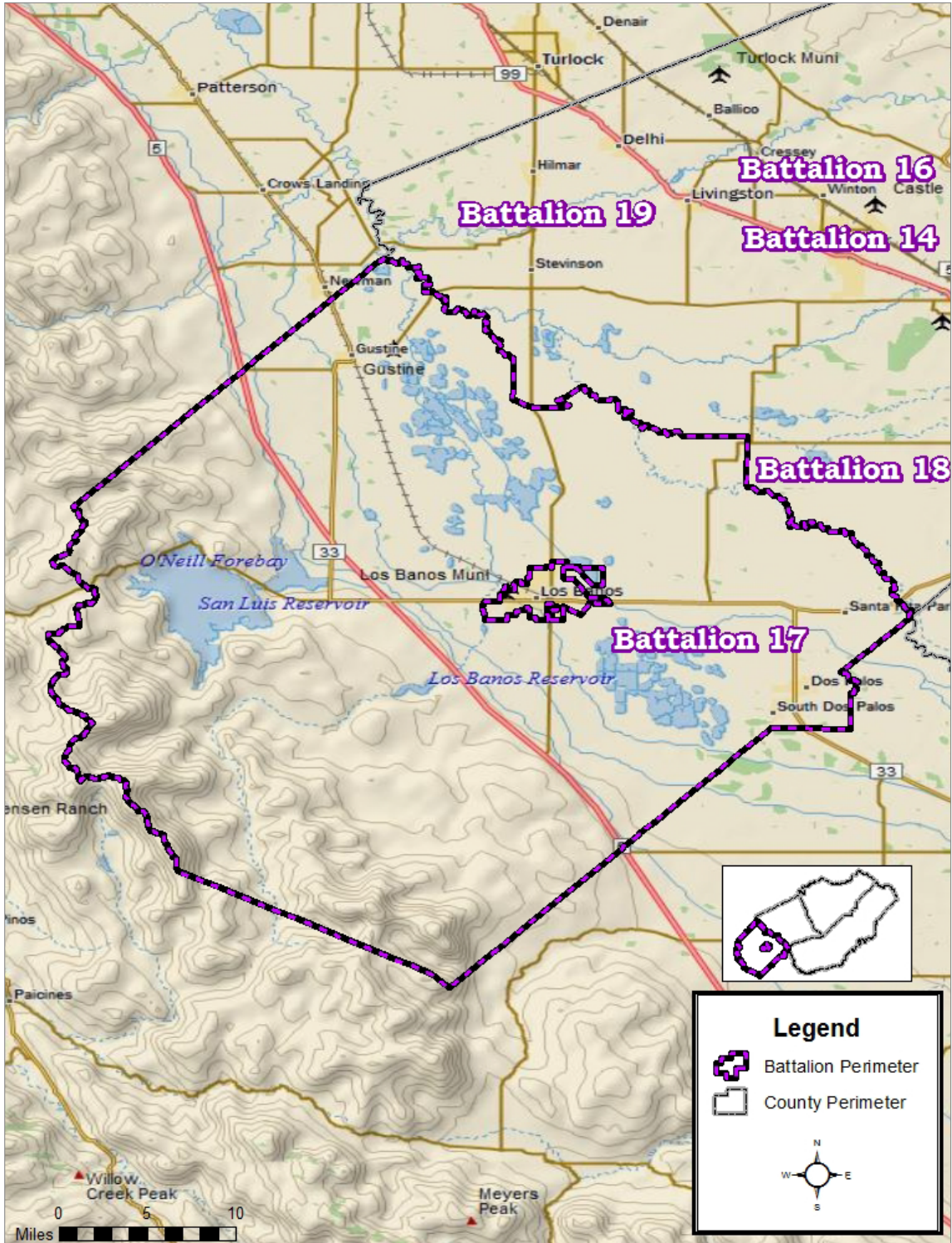




Source: CAL FIRE 2014a

DECEMBER 2017

**Figure 2 Boundaries of CAL FIRE San Benito-Monterey Battalion 5**



Source: CAL FIRE 2014b

DECEMBER 2017

**Figure 3 Boundaries of CAL FIRE Madera-Mariposa-Merced Unit Battalion 17**

**Table 6 Critical Facilities and Infrastructure Providing Emergency Services to the Resource Study Area**

Facility Type	Name	Location	Alternative
Police Department	Santa Clara Police Department	601 El Camino Real, Santa Clara, 95050	All Alternatives
Fire Department	City of Santa Clara Fire Department Station 1	777 Benton Street, Santa Clara 95050	All Alternatives
Fire Department	City of Santa Clara Fire Department Station 2	1900 Walsh Avenue, Santa Clara 95050	All Alternatives
Correctional Facility	Santa Clara County Jail	150 West Hedding Street, San Jose, 95110	All Alternatives
Police Department	San Jose Police Department	201 West Mission Street, San Jose, 95110	All Alternatives
Fire Department	San Jose Fire Department Station 1	225 North Market Street #124, San Jose, 95110	All Alternatives
Fire Department	San Jose Fire Department Station 30	454 Auzerais Avenue, San Jose, 95126	All Alternatives
Fire Department	San Jose Fire Department Station 3	98 Martha Street, San Jose, 95112	All Alternatives
Fire Department	San Jose Fire Department Station 7	800 Emory Street, San José, 95126	All Alternatives
Fire Department	San Jose Fire Department Administration	1661 Senter Road, San Jose, 95112	All Alternatives
Police Department	San Jose Police Department Property and Evidence Facility	1588-B Monterey Road, San Jose, 95110	All Alternatives
Sheriff Department	Santa Clara County Sheriff	1601 South De Anza Boulevard, #148, Cupertino, 95014	Alternatives 1, 2, & 3
Fire Department	San Jose Fire Department Station 18	4430 Monterey Highway, San Jose, 95111	Alternatives 1, 2, & 3
Fire Department	San Jose Fire Department Station 35	135 Poughkeepsie Road, San Jose, 95123	Alternatives 1, 2, & 3
Police Department	San Jose Police Department South	6087 Great Oaks Parkway, San Jose, 95138	Alternatives 1, 2, & 3
Fire Department	San Jose Fire Department Station 27	6027 San Ignacio Avenue, San Jose, 95119	Alternatives 1, 2, & 3
Correctional Facility	William F. James Boys Ranch	19050 Malaguerra Avenue, Morgan Hill, 95037	Alternatives 1 & 3
Fire Department	Morgan Hill Fire Department El Toro Fire Station	18300 Old Monterey Road, Morgan Hill, 95037	Alternatives 2 & 4
Fire Department	Morgan Hill Fire Department Dunne Hill Fire Station	2100 E. Dunne Avenue, Morgan Hill, 95037	Alternatives 1 & 3
Police Department	Morgan Hill Police Department	16200 Vineyard Boulevard, Morgan Hill, 95037	Alternative 2

Facility Type	Name	Location	Alternative
CAL FIRE	Santa Clara-Morgan Hill CAL FIRE Station 1	15670 Monterey Street, Morgan Hill, 95037	Alternative 2
Highway Patrol	Gilroy Inspection Facility	12000 South Valley Freeway, San Martin, 95046	Alternatives 1, 2, & 3
Fire Department	South Santa Clara County Fire Department Station No. 2	10810 No Name Uno, Gilroy, 95020	Alternative 3
Fire Department	City of Gilroy Fire Station	880 Sunrise Drive, Gilroy, 95020	Alternatives 1, 2, and 4
Fire Department	Gilroy Fire Department Las Animas Fire Station	8383 Wren Avenue, Gilroy, 95020	Alternatives 1 & 2
Police Department	Gilroy Police Department	7301 Hanna Street, Gilroy, 95020	Alternatives 1 & 2
Fire Department	Gilroy Fire Department	7070 Chestnut Street, Gilroy, 95020	Alternatives 1, 2, and 4
Highway Patrol	Highway Patrol CHP Hollister-Gilroy	740 Renz Lane, Gilroy, 95020	Alternatives 1, 2, & 3
CAL FIRE	Department of Forestry and Fire Protection Hollister Ranger Station	San Felipe Road, Hollister 95023	All Alternatives
CAL FIRE	Pacheco	12280 Pacheco Pass Highway, Hollister, 95023	All Alternatives
Sheriff Department	San Benito County Sheriff's Office	2301 Technology Parkway, Hollister, CA 95023	All Alternatives
Sheriff Department	Merced County Sheriff Department	Santa Nella Shopping Center, 13193 CA-33, Gustine, 95322	All Alternatives
CAL FIRE	Madera Mariposa Merced Unit - Los Banos	31011 West Gonzaga Road, Gustine, 95322	All Alternatives
Sheriff Department	Merced County Sheriff Department	445 I Street, Los Banos, 93635	All Alternatives
Fire Department	Merced County Fire Department - Los Banos Fire Station 71	525 H Street, Los Banos, CA 93635	All Alternatives

SR = State Route

CHP = California Highway Patrol

CAL FIRE = California Department of Forestry and Fire Protection

**Table 7 Existing Tall Structures within the Resource Study Area**

Alternative	Facility Type	High-Risk Facility Location	Ownership of Facility	Height of Structure <sup>1</sup>
<b>San Jose Diridon Station Approach Subsection</b>				
All alternatives	Bridge	Scott Boulevard Overpass	City of Santa Clara	23 ft 4 in
All alternatives	Bridge	Lafayette Street Pedestrian Overpass	Local Jurisdiction	23 ft 6 in
All alternatives	Bridge	De La Cruz Boulevard Overpass	Local Jurisdiction	23 ft 0 in
All alternatives	Bridge	Laurel Street Overhead (I-880 Overpass)	Caltrans	23 ft 0 in
All alternatives	Silo	Fuel Terminal, San Jose	Private sector	25 ft (estimate)
All alternatives	Bridge	West Hedding Street Overpass	Local Jurisdiction	Not applicable; would be rebuilt under <sup>2</sup>
Alternative 4	Signal	Signal Overbridge	HSR	
Alternative 4	Silo	Concrete Plant, San Jose	Private Sector	30 ft (estimate)
Alternative 4	Signal	Signal Overbridge	HSR	
Alternative 4	Building	Warehouse Building, San Jose	Private Sector	25 ft (estimate)
Alternative 4	Signal	Signal Overbridge	HSR	
All alternatives	Signal	Signal Overcrossing	HSR	
Alternative 4	Bridge	W San Carlos Street Overcrossing	Local Jurisdiction	24 ft 6 in
Alternative 4	Signal	Signal Overcrossing	HSR	
Alternative 4	Building	Apartment Building	Private Sector	100 ft (estimate)
<b>Monterey Corridor Subsection</b>				
All alternatives	Bridge	Almaden Expressway Overhead	Local Jurisdiction	Not applicable; would be rebuilt over <sup>3</sup>
Alternative 4	Signal	Signal Overcrossing	HSR	
All alternatives	Bridge	Curtner Avenue Overhead (San Jose Overhead UPRR)	Local Jurisdiction	Not applicable; would be rebuilt over <sup>3</sup>
All alternatives	Bridge	American Dairy Pedestrian Bridge	Local Jurisdiction	Not applicable; would be rebuilt over <sup>4</sup>
Alternative 4	Signal	Signal Overbridge	HSR	
All alternatives	Bridge	Capitol Expressway Overhead	Local Jurisdiction	24 ft 6 in
All alternatives	Bridge	Blossom Hill Road Overhead	Local Jurisdiction	24 ft 6 in
All alternatives	Bridge	Xander's Crossing Pedestrian Bridge	Local Jurisdiction	24 ft 6 in
Alternative 4	Bridge	Pedestrian Overpass	Local Jurisdiction	24 ft 6 in
All alternatives	Bridge	SR 85: 37 0488L&R – Coyote Overhead	Caltrans	24 ft 6 in

Alternative	Facility Type	High-Risk Facility Location	Ownership of Facility	Height of Structure <sup>1</sup>
All alternatives	Bridge	SR 85: 37 0634F – Route 101-85/S101 HOV Connector	Caltrans	24 ft 6 in
All alternatives	Bridge	Bernal Road Overhead	Local Jurisdiction	24 ft 6 in
<b>Morgan Hill and Gilroy Subsection</b>				
Alternative 4	Tower	Power Plant, Coyote	Private Sector	100 ft (estimate)
All alternatives	Bridge	Bailey Avenue Overhead	City of San Jose	24 ft 6 in
Alternative 4	Silos	Industrial Facility, Morgan Hill	Private Sector	100 ft (estimate)
Alternatives 2 & 4	Bridge	Butterfield Blvd Overhead	Local Jurisdiction	24 ft 6 in
Alternative 4	Silo	Industrial Plant, Gilroy	Private Sector	25 ft (estimate)
Alternative 4	Bridge	El Camino Real Overcrossing	Local Jurisdiction	24 ft 6 in
Alternatives 1 & 2	Bridge	South Gilroy (US 101) Overhead	Caltrans	Not applicable; would be rebuilt over <sup>3</sup>
<b>Pacheco Pass Subsection</b>				
None				
<b>San Joaquin Valley Subsection</b>				
None				

ft = feet

in = inches

I- = Interstate

UPRR = Union Pacific Railroad

SR = State Route

US = U.S. Highway

HOV = high-occupancy vehicle

Caltrans = California Department of Transportation

US = U.S. Highway

<sup>1</sup> Distance from soffit to top of rail<sup>2</sup> Existing bridge would be replaced with an underpass.<sup>3</sup> Existing bridge has insufficient clearance and would be reconstructed to design height standards.<sup>4</sup> Existing bridge would be replaced with a roadway bridge at the same location.



**Table 8 High-Risk Utilities within the Resource Study Area, Alternatives 1, 2, and 3<sup>1</sup>**

Owner	Facility Type	Station Number	Alternative 1	Alternative 2	Alternative 3	Transverse/ Longitudinal	Disposition
<b>San Jose Diridon Station Approach Subsection</b>							
PG&E	Electric OH	0052+00 to 0066+00	x	x	x	Both	Relocate
PG&E	Transmission Tower	0052+00	x	x	x	–	Protect in Place
PG&E	Transmission Tower	0059+70	x	x	x	–	Relocate
PG&E	Natural Gas	0208+90	x	x	x	Transverse	Relocate
<b>Monterey Corridor Subsection</b>							
PG&E	Electric OH	0334+50		x		Transverse	Relocate
PG&E	Electric OH	0334+50 to 0345+50		x		Longitudinal	Relocate
PG&E	Natural Gas	0481+20		x		Transverse	Relocate
San Jose Water Company	Potable Water	0298+50		x		Transverse	Protect in Place
Santa Clara Valley Water District	Potable Water	0363+30		x		Transverse	Relocate
PG&E	Natural Gas	0464+50 to 0480+20		x		Longitudinal	Relocate
PG&E	Electric OH	0334+00	x		x	Transverse	Relocate
PG&E	Natural Gas	0480+00	x		x	Transverse	Protect in Place
San Jose Water Company	Potable Water	0298+00	x		x	Transverse	Protect in Place
Santa Clara Valley Water District	Potable Water	0362+30	x		x	Transverse	Protect in Place
<b>Morgan Hill and Gilroy Subsection</b>							
Unknown	Electric & Telecom OH on Joint Pole	0645+54	x		x	Transverse	Relocate
Unknown	Electric & Telecom OH on Joint Pole	1308+66	x		x	Transverse	Relocate
Unknown	Electric & Telecom OH on Joint Pole	1322+56	x		x	Transverse	Relocate
PG&E	Electric OH	0717+33	x		x	Transverse	Relocate

Owner	Facility Type	Station Number	Alternative 1	Alternative 2	Alternative 3	Transverse/ Longitudinal	Disposition
PG&E	Electric OH	0657+00	x		x	Transverse	Protect in Place
PG&E	Electric OH	0657+50	x		x	Transverse	Protect in Place
PG&E	Electric OH	0658+00	x		x	Transverse	Protect in Place
PG&E	Electric OH	0663+00	x		x	Transverse	Relocate
PG&E	Electric OH	0663+30	x		x	Transverse	Relocate
PG&E	Electric OH	0663+85	x		x	Transverse	Protect in Place
PG&E	Electric OH	0664+00	x		x	Transverse	Protect in Place
PG&E	Electric OH	0664+45	x		x	Transverse	Relocate
PG&E	Electric OH	0664+70	x		x	Transverse	Relocate
PG&E	Electric OH	0665+20	x		x	Transverse	Relocate
PG&E	Electric OH	0665+45	x		x	Transverse	Relocate
PG&E	Electric OH	0892+60	x		x	Transverse	Protect in Place
PG&E	Electric OH	0892+75	x		x	Transverse	Protect in Place
PG&E	Electric OH	0893+35	x		x	Transverse	Protect in Place
PG&E	Electric OH	0893+60	x		x	Transverse	Protect in Place
CPN Pipeline Company	Natural Gas	0682+70	x		x	Transverse	Relocate
PG&E	Natural Gas	0717+85	x		x	Transverse	Protect in Place
PG&E	Natural Gas	0861+50	x		x	Transverse	Protect in Place
PG&E	Natural Gas	1043+10	x		x	Transverse	Relocate
PG&E	Natural Gas	1119+50	x		x	Transverse	Protect in Place
Santa Clara Valley Water District	Potable Water	0636+85 to 0645+00	x		x	Both	Protect in Place
City of Morgan Hill	Potable Water	1172+45	x		x	Transverse	Protect in Place
City of Morgan Hill	Potable Water	1188+70	x		x	Transverse	Protect in Place

Owner	Facility Type	Station Number	Alternative 1	Alternative 2	Alternative 3	Transverse/ Longitudinal	Disposition
Level 3/AboveNet	Telecommunication Indoor Facility	1334+00	x		x	-	Relocate
Electric OH	Electric OH	0807+28		x		Transverse	Relocate
Electric OH	Electric OH	0811+30		x		Transverse	Relocate
Electric OH	Electric OH	1015+00		x		Transverse	Relocate
Unknown	Electric OH	1034+30		x		Transverse	Relocate
Unknown	Electric OH	1039+11		x		Transverse	Relocate
Electric OH	Electric OH	987+00		x		Transverse	Relocate
PG&E	Electric OH	0747+20		x		Transverse	Protect in Place
PG&E	Electric OH	0747+70		x		Transverse	Protect in Place
PG&E	Electric OH	0748+15		x		Transverse	Protect in Place
PG&E	Electric OH	0752+60		x		Transverse	Protect in Place
PG&E	Electric OH	0752+90		x		Transverse	Protect in Place
PG&E	Electric OH	0753+45		x		Longitudinal	Protect in Place
PG&E	Electric OH	0753+60		x		Longitudinal	Protect in Place
PG&E	Electric OH	0754+05		x		Transverse	Protect in Place
PG&E	Electric OH	0754+30		x		Transverse	Protect in Place
PG&E	Electric OH	0754+80		x		Transverse	Protect in Place
PG&E	Electric OH	0755+10		x		Transverse	Protect in Place
PG&E	Electric OH	0982+30		x		Transverse	Relocate
PG&E	Electric OH	0982+50		x		Transverse	Relocate
PG&E	Electric OH	0983+10		x		Transverse	Relocate
PG&E	Electric OH	0983+35		x		Transverse	Relocate
CPN Pipeline Company	Natural Gas	0771+70		x		Transverse	Protect in Place
PG&E	Natural Gas	0807+75		x		Transverse	Protect in Place

Owner	Facility Type	Station Number	Alternative 1	Alternative 2	Alternative 3	Transverse/ Longitudinal	Disposition
PG&E	Natural Gas	0951+50		x		Transverse	Protect in Place
PG&E	Natural Gas	1203+50		x		Transverse	Protect in Place
Santa Clara Valley Water District	Potable Water	0726+00 to 0727+00		x		Both	Protect in Place
Level 3/AboveNet	Telecommunication Indoor Facility	1406+50		x		–	Relocate
PG&E	Transmission Tower	0982+50		x		–	Relocate
PG&E	Transmission Tower	0983+50		x		–	Relocate
Unknown	Electric & Telecom OH on Joint Pole	1654+73	x			Transverse	Relocate
–	Electric & Telecom OH on Joint Pole	2044+46	x			Transverse	Relocate
PG&E	Electric OH	1580+90	x			Transverse	Relocate
PG&E	Electric OH	1581+10	x			Transverse	Relocate
Unknown	Electric OH	1607+09	x			Transverse	Relocate
PG&E	Electric OH	1723+66	x			Transverse	Relocate
PG&E	Electric OH	1802+57 to 1810+00	x			Longitudinal	Relocate
PG&E	Electric OH	1803+03	x			Transverse	Relocate
PG&E	Electric OH	1838+60	x			Transverse	Relocate
PG&E	Electric OH	1838+75	x			Transverse	Relocate
PG&E	Electric OH	1870+47	x			Transverse	Remove
PG&E	Electric OH	2094+00	x			Transverse	Relocate
PG&E	Natural Gas	2107+75	x			Transverse	Protect in Place
PG&E	Natural Gas	1464+40	x			Transverse	Relocate
City of Gilroy	Potable Water	1628+50 to 1640+00	x			Both	Relocate
City of Gilroy	Potable Water	1640+00	x			Transverse	Relocate
City of Gilroy	Potable Water	1655+10	x			Transverse	Relocate

Owner	Facility Type	Station Number	Alternative 1	Alternative 2	Alternative 3	Transverse/ Longitudinal	Disposition
City of Gilroy	Potable Water	1680+90	x			Transverse	Relocate
City of Gilroy	Potable Water	1693+63 to 1700+71	x			Longitudinal	Relocate
City of Gilroy	Potable Water	1704+40	x			Transverse	Protect in Place
City of Gilroy	Potable Water	1709+26	x			Transverse	Remove
City of Gilroy	Potable Water	1729+50	x			Transverse	Protect in Place
City of Gilroy	Potable Water	1766+50	x			Transverse	Relocate
City of Gilroy	Potable Water	1802+35	x			Transverse	Remove
Santa Clara Valley Water District	Recycled Water	1749+35	x			Transverse	Protect in Place
PG&E	Transmission Tower	1581+00	x			–	Relocate
Unknown & Verizon	Electric & Telecom OH on Joint Pole	1521+20 to 1526+30		x		Both	Relocate
Unknown	Electric & Telecom OH on Joint Pole	1681+00		x		Transverse	Relocate
Unknown	Electric OH	1502+00 to 1529+00		x		Longitudinal	Relocate
Unknown	Electric OH	1568+50		x		Transverse	Relocate
Unknown	Electric OH	1568+50 to 1572+00		x		Longitudinal	Relocate
Unknown	Electric OH	1693+81		x		Transverse	Relocate
Unknown	Electric OH	1723+66		x		Transverse	Relocate
Unknown	Electric OH	1802+50 to 1810+00		x		Longitudinal	Relocate
Unknown	Electric OH	1803+03		x		Transverse	Relocate
PG&E	Electric OH	1580+70		x		Transverse	Relocate
PG&E	Electric OH	1580+95		x		Transverse	Relocate
PG&E	Electric OH	1838+60		x		Transverse	Relocate
PG&E	Electric OH	1838+75		x		Transverse	Relocate
PG&E	Natural Gas	1464+10		x		Transverse	Relocate

Owner	Facility Type	Station Number	Alternative 1	Alternative 2	Alternative 3	Transverse/ Longitudinal	Disposition
PG&E	Natural Gas	2107+75		x		Transverse	Protect in Place
City of Gilroy	Potable Water	1709+24		x		Transverse	Abandon
City of Gilroy	Potable Water	1723+92		x		Transverse	Relocate
City of Gilroy	Potable Water	1655+00		x		Transverse	Protect in Place
City of Gilroy	Potable Water	1681+68		x		Transverse	Relocate
City of Gilroy	Potable Water	1704+40		x		Transverse	Relocate
City of Gilroy	Potable Water	1729+50		x		Transverse	Relocate
City of Gilroy	Potable Water	1766+30		x		Transverse	Relocate
City of Gilroy	Potable Water	1802+35		x		Transverse	Remove
Santa Clara Valley Water District	Recycled Water	1749+35		x		Transverse	Protect in Place
PG&E	Transmission Tower	1580+85		x		–	Relocate
–	Electric & Fiber Optic OH on Joint Pole	1710+61			x	Transverse	Relocate
–	Electric & Telecom OH on Joint Pole	1603+65			x	Transverse	Relocate
–	Electric & Telecom OH on Joint Pole	1622+06			x	Transverse	Relocate
–	Electric & Telecom OH on Joint Pole	1661+00			x	Transverse	Relocate
–	Electric & Telecom OH on Joint Pole	1742+50			x	Transverse	Relocate
–	Electric & Telecom OH on Joint Pole	1796+00 to 1808+00			x	Longitudinal	Relocate
–	Electric & Telecom OH on Joint Pole	1798+55			x	Transverse	Relocate
–	Electric OH	1464+18			x	Transverse	Relocate
–	Electric OH	1486+71			x	Transverse	Relocate
–	Electric OH	1525+52			x	Transverse	Relocate
–	Electric OH	1681+00			x	Transverse	Relocate
–	Electric OH	1751+65			x	Transverse	Remove

Owner	Facility Type	Station Number	Alternative 1	Alternative 2	Alternative 3	Transverse/ Longitudinal	Disposition
–	Electric OH	1783+00			x	Transverse	Relocate
–	Electric OH	1824+32			x	Transverse	Relocate
PG&E	Electric OH	1570+00			x	Transverse	Relocate
PG&E	Gas	1804+50 to 1814+00			x	Longitudinal	Abandon
PG&E	Natural Gas	1464+10			x	Transverse	Relocate
Department of Water Resources	Potable Water	1795+00			x	Longitudinal	Protect in Place
<b>Pacheco Pass Subsection</b>							
Unknown	Electric & Telecom OH on Joint Pole	2188+94	x	x		Transverse	Relocate
PG&E & Unknown	Electric & Telecom OH on Joint Pole	2228+14	x	x		Transverse	Relocate
PG&E	Electric OH	2372+38	x	x		Transverse	Relocate
PG&E	Natural Gas	2193+10	x	x		Transverse	Protect in Place
Department of Water Resources	Potable Water	2220+00 to 2231+00	x	x		Longitudinal	Protect in Place
U.S. Bureau of Reclamation	Potable Water	2287+50	x	x		Transverse	Protect in Place
–	Electric OH	1951+33			x	Transverse	Relocate
–	Electric OH	2023+05			x	Transverse	Relocate
–	Electric OH	2027+00			x	Transverse	Relocate
PG&E	Natural Gas	1897+70			x	Transverse	Relocate
PG&E	Natural Gas	2028+00			x	Transverse	Protect in Place
PG&E	Natural Gas	2122+00			x	Transverse	Protect in Place
Department of Water Resources	Potable Water	2137+00 to 2156+00			x	Longitudinal	Protect in Place
Department of Water Resources	Potable Water	2156+00 to 2165+00			x	Longitudinal	Protect in Place

Owner	Facility Type	Station Number	Alternative 1	Alternative 2	Alternative 3	Transverse/ Longitudinal	Disposition
U.S. Bureau of Reclamation	Potable Water	2287+50			x	Transverse	Protect in Place
Shell	Crude Oil	4207+50	x	x	x	Transverse	Protect in Place
ConocoPhillips	Crude Oil	4247+25	x	x	x	Transverse	Protect in Place
Chevron	Crude Oil	4267+20	x	x	x	Transverse	Protect in Place
–	Electric & Telecom OH on Joint Pole	4366+50	x	x	x	Transverse	Relocate
–	Electric OH	4046+79	x	x	x	Transverse	Relocate
PG&E	Electric OH	4251+64	x	x	x	Transverse	Relocate
–	Electric OH	4372+43	x	x	x	Transverse	Relocate
–	Electric OH	4372+52 to 4375+50	x	x	x	Longitudinal	Relocate
PG&E	Electric OH	3666+00	x	x	x	Transverse	Protect in Place
PG&E	Electric OH	3686+20	x	x	x	Transverse	Protect in Place
PG&E	Electric OH	4098+83	x	x	x	Transverse	Relocate
PG&E	Electric OH	4177+80	x	x	x	Transverse	Protect in Place
PG&E	Electric OH	4178+30	x	x	x	Transverse	Protect in Place
PG&E	Electric OH	4178+70	x	x	x	Transverse	Protect in Place
PG&E	Electric OH	4179+50	x	x	x	Transverse	Protect in Place
PG&E	Electric OH	4180+00	x	x	x	Transverse	Protect in Place
PG&E	Electric OH	4180+50	x	x	x	Transverse	Protect in Place
PG&E	Electric OH	4182+50	x	x	x	Transverse	Relocate
PG&E	Electric OH	4183+30	x	x	x	Transverse	Protect in Place
PG&E	Electric OH	4183+60	x	x	x	Transverse	Protect in Place
Shell	Gas	4285+00	x	x	x	Transverse	Abandon
–	Irrigation Ditch	4366+26	x	x	x	Transverse	Relocate



Owner	Facility Type	Station Number	Alternative 1	Alternative 2	Alternative 3	Transverse/ Longitudinal	Disposition
U.S. Bureau of Reclamation	Potable Water	3270+50 to 3305+00	x	x	x	Both	Relocate
<b>San Joaquin Valley Subsection</b>							
PG&E	Electric & Telecom OH on Joint Pole	4597+20	x	x	x	Transverse	Relocate
PG&E	Electric & Telecom OH on Joint Pole	4798+51	x	x	x	Transverse	Relocate
PG&E	Electric & Telecom OH on Joint Pole	4882+50 to 4888+00	x	x	x	Longitudinal	Relocate
PG&E	Electric & Telecom OH on Joint Pole	5095+00 to 5102+30	x	x	x	Longitudinal	Relocate
PG&E	Electric & Telecom OH on Joint Pole	5097+97	x	x	x	Transverse	Relocate
PG&E	Electric OH	4568+13	x	x	x	Transverse	Relocate
PG&E	Electric OH	4595+34	x	x	x	Transverse	Relocate
PG&E	Electric OH	4615+00 to 4642+00	x	x	x	Longitudinal	Relocate
PG&E	Electric OH	4622+22	x	x	x	Transverse	Relocate
PG&E	Electric OH	4657+81	x	x	x	Transverse	Relocate
PG&E	Electric OH	4761+86	x	x	x	Transverse	Relocate
PG&E	Electric OH	4780+28	x	x	x	Transverse	Relocate
PG&E	Electric OH	4856+42	x	x	x	Transverse	Relocate
PG&E	Electric OH	4886+00	x	x	x	Transverse	Relocate
PG&E	Electric OH	4966+39	x	x	x	Transverse	Relocate
PG&E	Electric OH	5032+24	x	x	x	Transverse	Relocate
PG&E	Electric OH	5055+82	x	x	x	Transverse	Relocate
PG&E	Electric OH	5060+13	x	x	x	Transverse	Relocate
PG&E	Electric OH	5177+75	x	x	x	Transverse	Relocate
PG&E	Electric OH	5257+17	x	x	x	Transverse	Relocate
Chevron	Oil	4595+68	x	x	x	Transverse	Abandon

Owner	Facility Type	Station Number	Alternative 1	Alternative 2	Alternative 3	Transverse/ Longitudinal	Disposition
PG&E	PG&E Electric OH	4664+50 to 4717+00	x	x	x	Longitudinal	Relocate
PG&E	PG&E Electric OH	5319+00 to 5335+50	x	x	x	Longitudinal	Relocate
PG&E	PG&E Electric OH	5336+20	x	x	x	Transverse	Relocate
Henry Miller Reclamation District	Willis Branch Pump Station Facility	5257+00	x	x	x	Transverse	Relocate

PG&E = Pacific Gas and Electric

OH = overhead

UG = underground

Telecomm = Telecommunication

<sup>1</sup> Because of differences in stationing, Alternative 4 is addressed in Table 9

**Table 9 High-Risk Utilities within the Resource Study Area, Alternative 4**

Owner	Facility Type	Station Number	Alternative 4	Transverse/ Longitudinal/	Disposition
<b>San Jose Diridon Approach Subsection</b>					
PG&E	Electric OH	3018+36	x	Transverse	Protect in Place
PG&E	Electric OH	3030+30 to 3033+00	x	Longitudinal	Relocate
City of San Jose	Electric OH	3032+47	x	Transverse	Protect in Place
City of San Jose	Electric OH	3032+58	x	Transverse	Protect in Place
PG&E	Electric OH	3033+00	x	Transverse	Relocate
PG&E	Electric OH	3033+00 to 3036+40	x	Longitudinal	Relocate
Unknown	Electric OH	3050+75	x	Transverse	Protect in Place
PG&E	Electric OH	3108+74	x	Transverse	Protect in Place
PG&E	Electric OH	3122+37	x	Transverse	Relocate
PG&E	Electric OH	3305+84	x	Transverse	Relocate
PG&E & Unknown	Electric OH & Telecom OH on Joint Pole	3018+48	x	Transverse	Protect in Place

Owner	Facility Type	Station Number	Alternative 4	Transverse/ Longitudinal/	Disposition
PG&E & Unknown	Electric OH & Telecom OH on Joint Pole	3022+63	x	Transverse	Protect in Place
PG&E and Unknown	Electric OH & Telecom OH on Joint Pole	3066+23	x	Transverse	Protect in Place
PG&E	Electric OH & Telecom OH on Joint Pole	3114+23	x	Transverse	Relocate
Unknown	Electric OH & Telecom OH on Joint Pole	3143+86	x	Transverse	Relocate
Unknown	Electric OH & Telecom OH on Joint Pole	3246+64	x	Transverse	Relocate
Unknown	Electric UG	3047+24	x	Transverse	Protect in Place
Unknown	Electric UG	3050+50 to 3053+50	x	Longitudinal	Relocate
Unknown	Electric UG	3050+77	x	Transverse	Protect in Place
PG&E	Electric UG	3057+41	x	Transverse	Protect in Place
PG&E	Electric UG	3066+17	x	Transverse	Protect in Place
Unknown	Fiber Optic	3065+66 to 3124+00	x	Longitudinal	Relocate
Level 3/AT&T/AboveNet	Fiber Optic	all	x	Longitudinal	Relocate
QWEST/WTG	Fiber Optic	all	x	Longitudinal	Relocate
AT&T	Fiber Optic	all	x	Longitudinal	Relocate
AT&T/MCI/MFN	Fiber Optic	all	x	Longitudinal	Relocate
AT&T	Fiber Optic	all	x	Longitudinal	Relocate
Level 3/AboveNet	Fiber Optic	all	x	Longitudinal	Relocate
Sprint/MCI	Fiber Optic	all	x	Longitudinal	Relocate
PG&E	Gas	3022+38	x	Transverse	Protect in Place
PG&E	Gas	3022+55	x	Transverse	Protect in Place
Unknown	Gas	3046+69	x	Transverse	Protect in Place
Unknown	Gas	3050+82	x	Transverse	Protect in Place
PG&E	Gas	3057+53	x	Transverse	Protect in Place
PG&E	Natural Gas	3247+40	x	Transverse	Protect in Place

Owner	Facility Type	Station Number	Alternative 4	Transverse/ Longitudinal/	Disposition
Unknown	Oil	3046+90	x	Transverse	Protect in Place
Unknown	Oil	3046+91	x	Transverse	Protect in Place
Santa Clara Valley Water District	Potable Water	3022+23	x	Transverse	Protect in Place
Cal Water	Potable Water	3022+32	x	Transverse	Protect in Place
City of San Jose	Potable Water	3046+37	x	Transverse	Protect in Place
City of San Jose	Potable Water	3046+45	x	Transverse	Protect in Place
City of San Jose	Potable Water	3046+80	x	Transverse	Protect in Place
City of San Jose	Potable Water	3051+18	x	Transverse	Protect in Place
City of San Jose	Potable Water	3057+50	x	Transverse	Protect in Place
Unknown	Potable Water	3066+12	x	Transverse	Protect in Place
Unknown	Potable Water	3077+19	x	Transverse	Protect in Place
City of San Jose	Storm Drain Pump Station	3164+17	x	Transverse	Relocate
City of San Jose	Storm Drain Pump Station	3187+92	x	Transverse	Relocate
PG&E	Transmission Pole	3033+00	x	Transverse	Relocate
PG&E	Electric OH	0384+43	x	Transverse	Relocate
PG&E	Electric OH	0494+72	x	Transverse	Relocate
PG&E	Electric OH	0549+92	x	Transverse	Relocate
PG&E	Electric OH	0550+04	x	Transverse	Relocate
PG&E	Electric OH	0574+19	x	Transverse	Relocate
<b>Morgan Hill and Gilroy Subsection</b>					
PG&E	Electric OH	0696+71	x	Transverse	Protect in Place
PG&E	Electric OH	0696+79	x	Transverse	Protect in Place
PG&E	Electric OH	0697+26	x	Transverse	Protect in Place
PG&E	Electric OH	0701+92	x	Transverse	Protect in Place

Owner	Facility Type	Station Number	Alternative 4	Transverse/ Longitudinal/	Disposition
PG&E	Electric OH	0702+22	x	Transverse	Protect in Place
PG&E	Electric OH	0702+76	x	Transverse	Protect in Place
PG&E	Electric OH	0702+94	x	Transverse	Protect in Place
PG&E	Electric OH	0703+36	x	Transverse	Protect in Place
PG&E	Electric OH	0703+58	x	Transverse	Protect in Place
PG&E	Electric OH	0704+10	x	Transverse	Protect in Place
PG&E	Electric OH	0704+35	x	Transverse	Protect in Place
Unknown	Electric OH	0756+95	x	Transverse	Relocate
Unknown	Electric OH	0782+61	x	Transverse	Relocate
Unknown	Electric OH	0864+13	x	Transverse	Relocate
Unknown	Electric OH	0869+54	x	Transverse	Relocate
PG&E	Electric OH	0930+83	x	Transverse	Protect in Place
PG&E	Electric OH	0932+00	x	Transverse	Protect in Place
PG&E	Electric OH	0932+56	x	Transverse	Protect in Place
PG&E	Electric OH	0932+84	x	Transverse	Protect in Place
PG&E	Electric OH	0955+82	x	Transverse	Relocate
PG&E	Electric OH	1153+28	x	Transverse	Relocate
Unknown	Electric OH	1174+00 to 1235+00	x	Longitudinal	Relocate
PG&E	Electric OH	1209+51	x	Transverse	Relocate
PG&E	Electric OH	1277+93	x	Transverse	Relocate
PG&E	Electric OH	1518+65	x	Transverse	Relocate
PG&E	Electric OH	1519+54	x	Transverse	Relocate
PG&E	Electric OH	1530+26	x	Transverse	Relocate (Raise)
PG&E	Electric OH	1530+44	x	Transverse	Relocate (Raise)

Owner	Facility Type	Station Number	Alternative 4	Transverse/ Longitudinal/	Disposition
PG&E	Electric OH	1530+54	x	Transverse	Relocate
PG&E	Electric OH	1556+76	x	Transverse	Relocate
Unknown	Electric OH	1643+46	x	Transverse	Relocate
Unknown	Electric OH	1649+39	x	Transverse	Relocate
PG&E	Electric OH	1673+28	x	Transverse	Relocate
PG&E	Electric OH	1798+78	x	Transverse	Relocate (Raise)
PG&E	Electric OH	1798+94	x	Transverse	Relocate (Raise)
Unknown	Electric OH	1824+65	x	Transverse	Relocate
Unknown	Electric OH	1865+62	x	Transverse	Relocate
Unknown & Verizon	Electric OH & Telecom OH on Joint Pole	0936+78	x	Transverse	Relocate
Unknown	Electric OH & Telecom OH on Joint Pole	1122+36	x	Transverse	Relocate
Unknown	Electric OH & Telecom OH on Joint Pole	1175+15	x	Transverse	Relocate
Unknown	Electric OH & Telecom OH on Joint Pole	1184+23	x	Transverse	Relocate
Unknown	Electric OH & Telecom OH on Joint Pole	1330+83	x	Transverse	Relocate
Unknown	Electric OH & Telecom OH on Joint Pole	1344+88	x	Transverse	Relocate
Unknown	Electric OH & Telecom OH on Joint Pole	1413+96	x	Transverse	Relocate
PG&E & Verizon	Electric OH & Telecom OH on Joint Pole	1435+23	x	Transverse	Relocate
PG&E & Verizon	Electric OH & Telecom OH on Joint Pole	1448+41	x	Transverse	Relocate
PG&E & Verizon	Electric OH & Telecom OH on Joint Pole	1460+27	x	Transverse	Relocate
PG&E & Verizon	Electric OH & Telecom OH on Joint Pole	1476+00	x	Transverse	Relocate
PG&E & Verizon	Electric OH & Telecom OH on Joint Pole	1483+19	x	Transverse	Relocate
PG&E & Verizon	Electric OH & Telecom OH on Joint Pole	1510+61	x	Transverse	Relocate
PGE & Verizon	Electric OH & Telecom OH on Joint Pole	1545+03	x	Transverse	Relocate
PG&E & Verizon	Electric OH & Telecom OH on Joint Pole	1609+59	x	Transverse	Relocate

Owner	Facility Type	Station Number	Alternative 4	Transverse/ Longitudinal/	Disposition
PG&E & Verizon	Electric OH & Telecom OH on Joint Pole	1715+00	x	Transverse	Relocate
Unknown	Electric OH & Telecom OH on Joint Pole	1788+73	x	Transverse	Remove
Unknown	Electric OH & Telecom OH on Joint Pole	1841+81	x	Transverse	Relocate
Unknown	Electric OH & Telecom OH on Joint Pole	1871+66	x	Transverse	Remove
Level 3/AT&T/AboveNet	Fiber Optic	all	x	Longitudinal	Relocate
QWEST/WTG	Fiber Optic	all	x	Longitudinal	Relocate
AT&T	Fiber Optic	all	x	Longitudinal	Relocate
AT&T/MCI/MFN	Fiber Optic	all	x	Longitudinal	Relocate
AT&T	Fiber Optic	all	x	Longitudinal	Relocate
Level 3/AboveNet	Fiber Optic	all	x	Longitudinal	Relocate
Sprint/MCI	Fiber Optic	all	x	Longitudinal	Relocate
CPN Pipeline Company	Natural Gas	0720+44	x	Transverse	Protect in Place
PG&E	Natural Gas	0757+37	x	Transverse	Protect in Place
PG&E	Natural Gas	1153+23	x	Transverse	Remove
PG&E	Natural Gas	1414+03	x	Transverse	Protect in Place
San Jose Water Company	Potable Water	0337+67	x	Transverse	Extend Casing as Needed
Santa Clara Valley Water District	Potable Water	0401+88	x	Transverse	Protect in Place
Santa Clara Valley Water District	Potable Water	0676+62	x	Transverse	Protect in Place
Unknown	Potable Water	1006+84	x	Transverse	Protect in Place
City of Gilroy	Potable Water	1564+73	x	Transverse	Protect in Place
City of Gilroy	Potable Water	1604+95	x	Transverse	Protect in Place
Unknown	Potable Water	1609+86	x	Transverse	Protect in Place
Unknown	Potable Water	1631+53	x	Transverse	Relocate
Unknown	Potable Water	1643+23	x	Transverse	Protect in Place

Owner	Facility Type	Station Number	Alternative 4	Transverse/ Longitudinal/	Disposition
Unknown	Potable Water	1649+14	x	Transverse	Protect in Place
City of Gilroy	Potable Water	1654+23	x	Transverse	Protect in Place
Unknown	Potable Water	1673+52	x	Transverse	Remove
City of Gilroy	Potable Water	1679+31	x	Transverse	Relocate
City of Gilroy	Potable Water	1715+13	x	Transverse	Protect in Place
Santa Clara Valley Water District	Recycled Water	1698+60	x	Transverse	Protect in Place
City of Morgan Hill	Storm Drain Pump Station	1087+18	x	Transverse	Relocate
CA High-Speed Rail	Track Drainage Pump Station	0723+76	x	Transverse	New
CA High-Speed Rail	Track Drainage Pump Station	0749+76	x	Transverse	New
CA High-Speed Rail	Track Drainage Pump Station	0843+00	x	Transverse	New
CA High-Speed Rail	Track Drainage Pump Station	0888+27	x	Transverse	New
CA High-Speed Rail	Track Drainage Pump Station	0966+19	x	Transverse	New
CA High-Speed Rail	Track Drainage Pump Station	1275+83	x	Transverse	New
CA High-Speed Rail	Track Drainage Pump Station	1360+00	x	Transverse	New
–	Electric & Telecom OH on Joint Pole	2044+46	x	Transverse	Relocate
PG&E	Electric OH	2094+00	x	Transverse	Relocate
PG&E	Natural Gas	2107+75	x	Transverse	Protect in Place
City of San Jose	Storm Drain Pump Station	3032+39	x	Transverse	Relocate
Unknown	Irrigation Ditch	1884+31	x	Transverse	Realign
Unknown	Irrigation Ditch	1890+28	x	Transverse	Realign
<b>Pacheco Pass Subsection</b>					
Unknown	Electric & Telecom OH on Joint Pole	2188+94	x	Transverse	Relocate
PG&E & Unknown	Electric & Telecom OH on Joint Pole	2228+14	x	Transverse	Relocate
PG&E	Electric OH	2372+38	x	Transverse	Relocate



Owner	Facility Type	Station Number	Alternative 4	Transverse/ Longitudinal/	Disposition
PG&E	Natural Gas	2193+10	x	Transverse	Protect in Place
Department of Water Resources	Potable Water	2220+00 to 2231+00	x	Longitudinal	Protect in Place
U.S. Bureau of Reclamation	Potable Water	2287+50	x	Transverse	Protect in Place
Shell	Crude Oil	4207+50	x	Transverse	Protect in Place
ConocoPhillips	Crude Oil	4247+25	x	Transverse	Protect in Place
Chevron	Crude Oil	4267+20	x	Transverse	Protect in Place
-	Electric & Telecom OH on Joint Pole	4366+50	x	Transverse	Relocate
-	Electric OH	4046+79	x	Transverse	Relocate
PG&E	Electric OH	4251+64	x	Transverse	Relocate
-	Electric OH	4372+43	x	Transverse	Relocate
-	Electric OH	4372+52 to 4375+50	x	Longitudinal	Relocate
PG&E	Electric OH	3666+00	x	Transverse	Protect in Place
PG&E	Electric OH	3686+20	x	Transverse	Protect in Place
PG&E	Electric OH	4098+83	x	Transverse	Relocate
PG&E	Electric OH	4177+80	x	Transverse	Protect in Place
PG&E	Electric OH	4178+30	x	Transverse	Protect in Place
PG&E	Electric OH	4178+70	x	Transverse	Protect in Place
PG&E	Electric OH	4179+50	x	Transverse	Protect in Place
PG&E	Electric OH	4180+00	x	Transverse	Protect in Place
PG&E	Electric OH	4180+50	x	Transverse	Protect in Place
PG&E	Electric OH	4182+50	x	Transverse	Relocate
PG&E	Electric OH	4183+30	x	Transverse	Protect in Place
PG&E	Electric OH	4183+60	x	Transverse	Protect in Place
Shell	Gas	4285+00	x	Transverse	Abandon

Owner	Facility Type	Station Number	Alternative 4	Transverse/ Longitudinal/	Disposition
-	Irrigation Ditch	4366+26	x	Transverse	Relocate
U.S. Bureau of Reclamation	Potable Water	3270+50 to 3305+00	x	Both	Relocate
<b>San Joaquin Valley Subsection</b>					
PG&E	Electric & Telecom OH on Joint Pole	4597+20	x	Transverse	Relocate
PG&E	Electric & Telecom OH on Joint Pole	4798+51	x	Transverse	Relocate
PG&E	Electric & Telecom OH on Joint Pole	4882+50 to 4888+00	x	Longitudinal	Relocate
PG&E	Electric & Telecom OH on Joint Pole	5095+00 to 5102+30	x	Longitudinal	Relocate
PG&E	Electric & Telecom OH on Joint Pole	5097+97	x	Transverse	Relocate
PG&E	Electric OH	4568+13	x	Transverse	Relocate
PG&E	Electric OH	4595+34	x	Transverse	Relocate
PG&E	Electric OH	4615+00 to 4642+00	x	Longitudinal	Relocate
PG&E	Electric OH	4622+22	x	Transverse	Relocate
PG&E	Electric OH	4657+81	x	Transverse	Relocate
PG&E	Electric OH	4761+86	x	Transverse	Relocate
PG&E	Electric OH	4780+28	x	Transverse	Relocate
PG&E	Electric OH	4856+42	x	Transverse	Relocate
PG&E	Electric OH	4886+00	x	Transverse	Relocate
PG&E	Electric OH	4966+39	x	Transverse	Relocate
PG&E	Electric OH	5032+24	x	Transverse	Relocate
PG&E	Electric OH	5055+82	x	Transverse	Relocate
PG&E	Electric OH	5060+13	x	Transverse	Relocate
PG&E	Electric OH	5177+75	x	Transverse	Relocate
PG&E	Electric OH	5257+17	x	Transverse	Relocate
Chevron	Oil	4595+68	x	Transverse	Abandon

Owner	Facility Type	Station Number	Alternative 4	Transverse/ Longitudinal/	Disposition
PG&E	PG&E Electric OH	4664+50 to 4717+00	x	Longitudinal	Relocate
PG&E	PG&E Electric OH	5319+00 to 5335+50	x	Longitudinal	Relocate
PG&E	PG&E Electric OH	5336+20	x	Transverse	Relocate
Henry Miller Reclamation District	Willis Branch Pump Station Facility	5257+00	x	Transverse	Relocate

PG&E = Pacific Gas and Electric  
 OH = overhead  
 UG = underground  
 Telecomm = Telecommunication

## References

- California Department of Forestry and Fire Protection (CAL FIRE). 2014a. *San Benito-Monterey Unit 2012 Strategic Fire Plan*, May 14, 2012. <http://cdfdata.fire.ca.gov/pub/fireplan/fpupload/fpppdf1278.pdf> (accessed April 28, 2017).
- . 2014b. *Madera-Mariposa-Merced Unit 2014 Strategic Fire Plan, May 1, 2014, Figure B: Battalion Maps*, Page 7. <http://firewisemaderacounty.org/wp-content/uploads/2012/04/2014-05-01-CAL-FIRE-Madera-Mariposa-Merced-Unit-MMU-Strategic-Fire-Plan-California-Department-of-Forestry-and-Fire.pdf> (accessed April 28, 2017).
- . 2017. Santa Clara Unit Station Location and BC Map. March 2017. [www.sccfd.com/wp-content/uploads/2017/03/Unit-Battalion-Breakdowns-map\\_20170312.pdf](http://www.sccfd.com/wp-content/uploads/2017/03/Unit-Battalion-Breakdowns-map_20170312.pdf) (accessed December 14, 2017).
- California Office of Statewide Health Planning & Development. 2016. *List of Hospitals in California, USA*. <http://gis.oshpd.ca.gov/atlas/places/list-of-hospitals> (accessed July 12, 2016).
- City of Gilroy. 2003. Gilroy Fire Department Memorandum, To Jay Baksa, City Administrator. From Jeff Clet, Fire Chief. Subject: Master Plan Update, September 11, 2003. Page 1. [www.cityofgilroy.org/DocumentCenter/Home/View/5258](http://www.cityofgilroy.org/DocumentCenter/Home/View/5258) (accessed February 3, 2017).
- . 2017. Fire Department Operations, Apparatus. <http://www.ci.gilroy.ca.us/176/Apparatus> (accessed March 8, 2017).
- City of Los Banos. 2017. Los Banos Fire Department. [www.losbanos.org/city-government/departments/fire/](http://www.losbanos.org/city-government/departments/fire/) (accessed February 2, 2017).
- City of Morgan Hill. 2013. City of Morgan Hill Office of Emergency Services: Emergency Operations Plan. Morgan Hill, CA. Adopted June 6, 2013. Page 1. [www.morganhill.ca.gov/1288/Emergency-Response-Plan](http://www.morganhill.ca.gov/1288/Emergency-Response-Plan) (accessed February 2, 2017).
- . 2017. City of Morgan Hill Public Safety Master Plan, February 10, 2017. <https://user-ddhj25y.cld.bz/City-of-Morgan-Hill-Public-Safety-Master-Plan/1> (accessed August 9, 2017).
- City of San Jose. 2015. City of San José. Annual Report on City Services 2014-15, Fire Department. Page 51. December 2015. [www.sanjoseca.gov/DocumentCenter/View/48242](http://www.sanjoseca.gov/DocumentCenter/View/48242).
- . 2016. City of San José 2016-2017 Adopted Operating Budget - San Jose at a Glance. Page I-8. [www.sanjoseca.gov/DocumentCenter/View/61777](http://www.sanjoseca.gov/DocumentCenter/View/61777)
- County of Merced. 2013. *2030 Merced County General Plan*. Merced, CA. Adopted December 10, 2013.
- County of San Benito. 2015a. *San Benito County 2035 General Plan*. Adopted July 21, 2015. Page 6-14; Page 7-2; Page 7-12; Page 7-18; Page 7-19; Page 7-19; Page 9-2. <http://cosb.us/wp-content/uploads/Adopted-2035-GPU.pdf> (accessed February 2, 2017).
- . 2015b. *San Benito County Operational Area Emergency Operations Plan*. Adopted August 2015. Page i. [www.cosb.us/wp-content/uploads/SBC-EOP-2015.pdf](http://www.cosb.us/wp-content/uploads/SBC-EOP-2015.pdf) (accessed February 2, 2017).
- Federal Railroad Administration (FRA). 2016a. *Table 5.15: Consolidated Hwy Rail Accident Incident by State/Region/County*. Merced County. 2011-2015. Office of Safety Analysis. <http://safetydata.fra.dot.gov/OfficeofSafety/publicsite/Query/ConsolidatedHwyRailIncidents.aspx> (accessed December 29, 2016).

- . 2016b. *Table 5.15: Consolidated Hwy Rail Accident Incident by State/Region/County*. San Benito County. 2011-2015. Office of Safety Analysis. <http://safetydata.fra.dot.gov/OfficeofSafety/publicsite/Query/ConsolidatedHwyRailIncidents.aspx> (accessed December 29, 2016).
- . 2016c. *Table 5.15: Consolidated Hwy Rail Accident Incident by State/Region/County*. Santa Clara County. 2011-2015. Office of Safety Analysis. <http://safetydata.fra.dot.gov/OfficeofSafety/publicsite/Query/ConsolidatedHwyRailIncidents.aspx> (accessed December 29, 2016).
- . 2017a. *Table 1.11: One Year Accident/Incident Overview by State/Region/County*. Merced County. 2011-October 31, 2016. Office of Safety Analysis. <http://safetydata.fra.dot.gov/OfficeofSafety/> (accessed January 30, 2017).
- . 2017b. *Table 1.11: One Year Accident/Incident Overview by State/Region*. San Benito County. 2011-October 31, 2016. Office of Safety Analysis. <http://safetydata.fra.dot.gov/OfficeofSafety/> (accessed January 30, 2017).
- . 2017c. *Table 1.11: One Year Accident/Incident Overview by State/Region*. San Benito County. 2011-October 31, 2016. Office of Safety Analysis. <http://safetydata.fra.dot.gov/OfficeofSafety/> (accessed January 30, 2017).
- Gilroy Fire Department. 2016a. Email message from Roy J. Shackel, Fire Captain, OES Coordinator, KD6QVL, Gilroy Fire Department/OES, Gilroy CA to Jessica Viramontes, ICF, San Francisco, CA, RE: HSR Information Request, November 21, 2016, 1:57 PM, Page 1.
- . 2016b. Email message from Roy J. Shackel, Fire Captain, OES Coordinator, KD6QVL, Gilroy Fire Department/OES, Gilroy CA to Jessica Viramontes, ICF, San Francisco, CA, HSR Information Request, November 21, 2016, 4:31 PM, Page 1.
- . 2016c. Email message from Roy J. Shackel, Fire Captain, OES Coordinator, KD6QVL, Gilroy Fire Department/OES, Gilroy CA to Jessica Viramontes, ICF, San Francisco, CA, RE: HSR Information Request, November 28, 2016, 11:54 AM, Page 1.
- Merced County Fire Department. 2017. *Merced County Fire Department Website, Stations*. [www.co.merced.ca.us/BusinessDirectoryII.aspx?lngBusinessCategoryID=26](http://www.co.merced.ca.us/BusinessDirectoryII.aspx?lngBusinessCategoryID=26) (accessed May 1, 2017).
- San Jose Fire Department. 2014. San Jose Fire Department Response Time Performance Initial Analysis, Final Report, prepared by San José Fire Department Data Working Group, April 7, 2014, Pages 4–5.
- . 2016a. Letter to Mr. Guy Preston, Northern California Regional Delivery Manager California High Speed Rail Authority RE Request for Fire Service Information on Proposed High-Speed Rail Draft EIR/EIS from Robert Sapien, Jr., Assistant Fire Chief, San José Fire Department, November 23, 2016, Page 4.
- . 2016b. San Jose Fire Department City-Wide Response Metrics As of 12/14/2016. [www.sanjoseca.gov/DocumentCenter/View/36885](http://www.sanjoseca.gov/DocumentCenter/View/36885) Page 1 (accessed February 3, 2017).
- Santa Clara County Fire Department. 2016. Santa Clara County Fire Department 2016 Annual Report. [www.sccfd.org/images/documents/SCCFD\\_2016\\_Annual\\_Report\\_FINAL.pdf](http://www.sccfd.org/images/documents/SCCFD_2016_Annual_Report_FINAL.pdf) (accessed April 28, 2017).