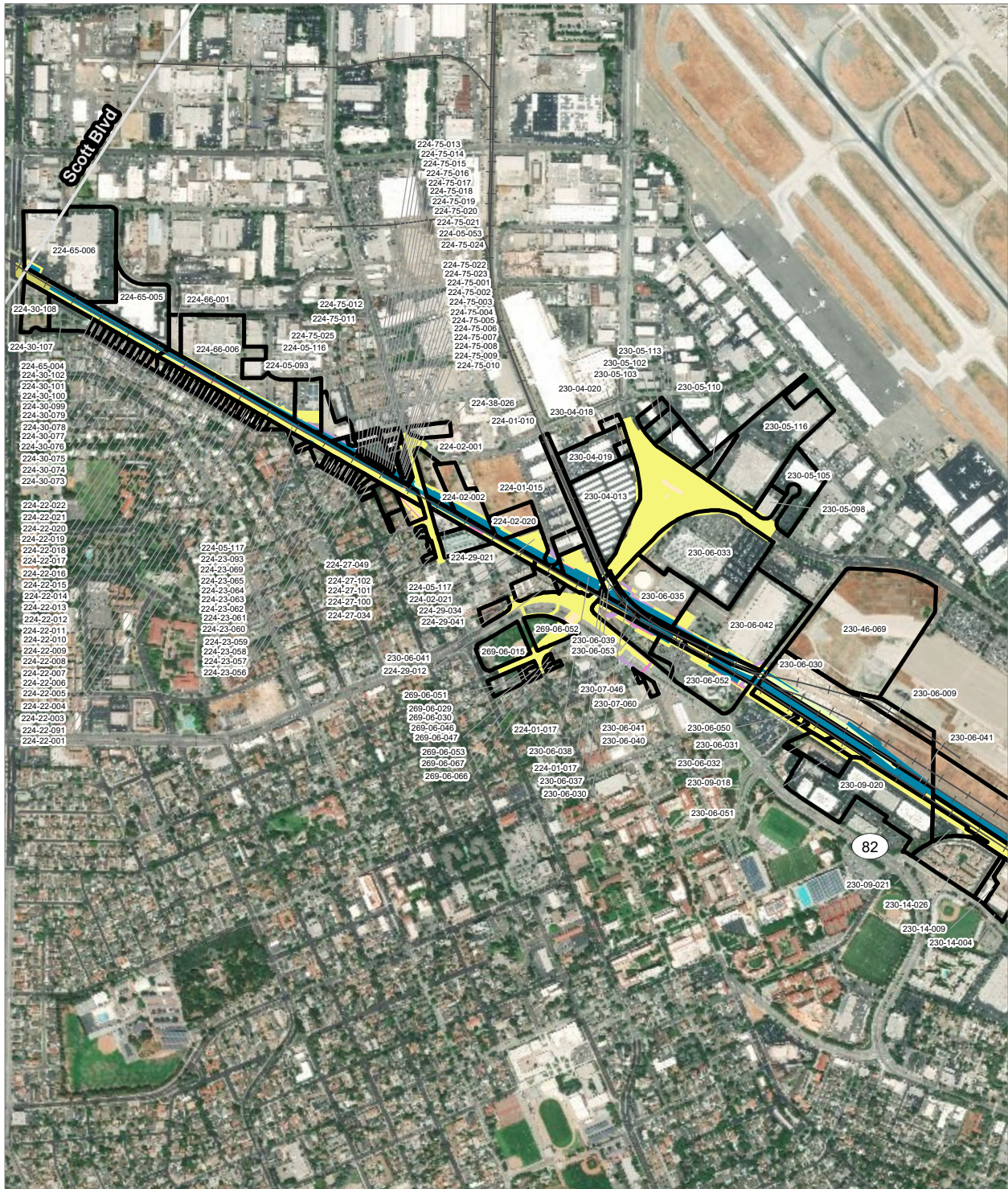
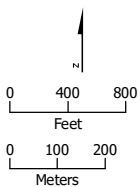


APPENDIX 3.1-A: PARCELS WITHIN THE HSR PROJECT FOOTPRINT (Alternative 3, Part 1)



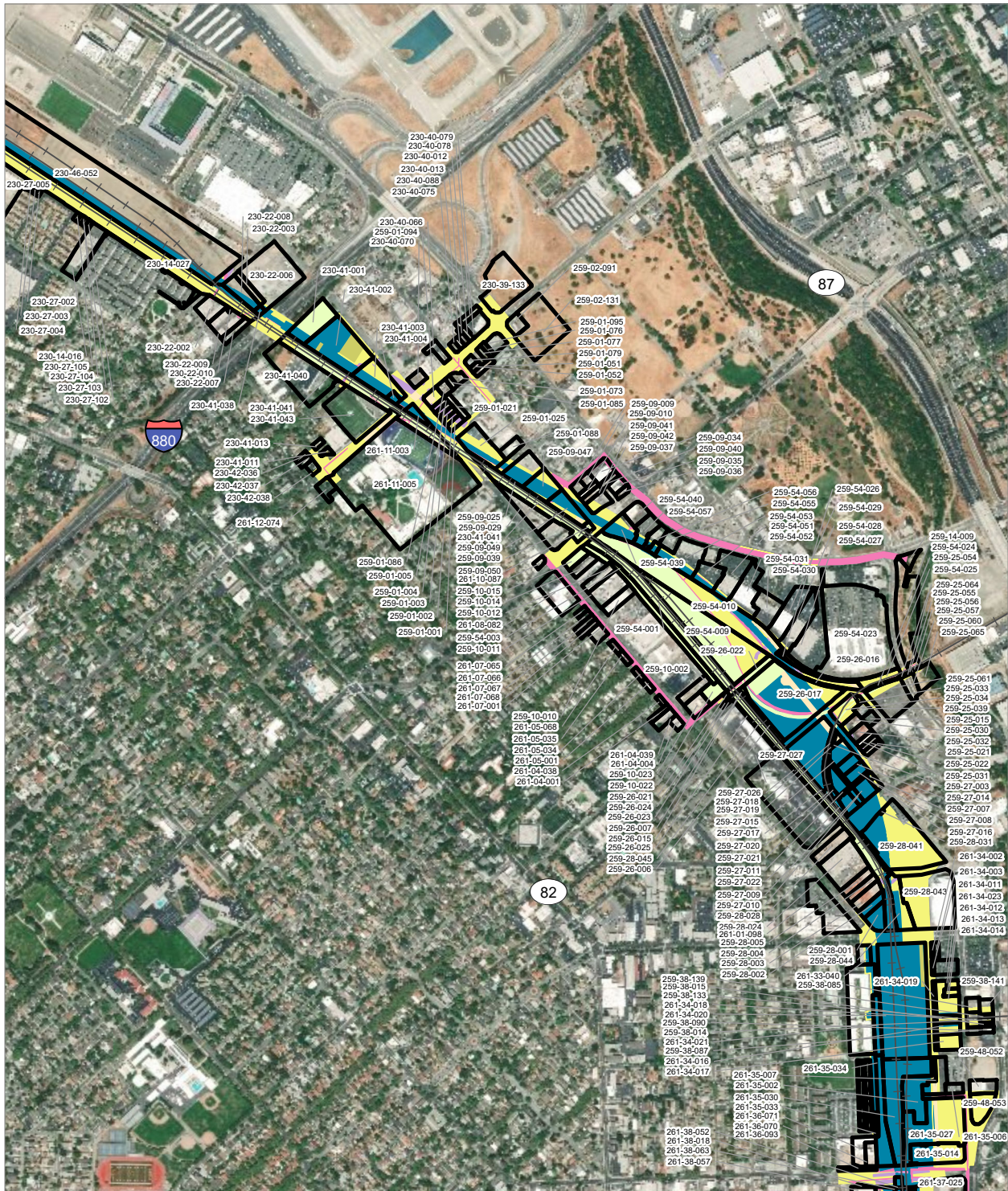
PRELIMINARY DRAFT/SUBJECT TO CHANGE - HSR ALIGNMENT IS NOT DETERMINED
 SOURCE: ESRI, 2019; Santa Clara County, 2016; San Mateo County, 2016, San Francisco County, 2016



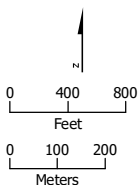
- HSR Right-of-Way
- Roadway Right-of-Way
- Rail Right-of-Way
- HSR Permanent Easement
- Permanent Utility Easement
- Temporary Construction Easement
- Temporary Utility Easement
- Parcel (APN Displayed)

Alternative 3





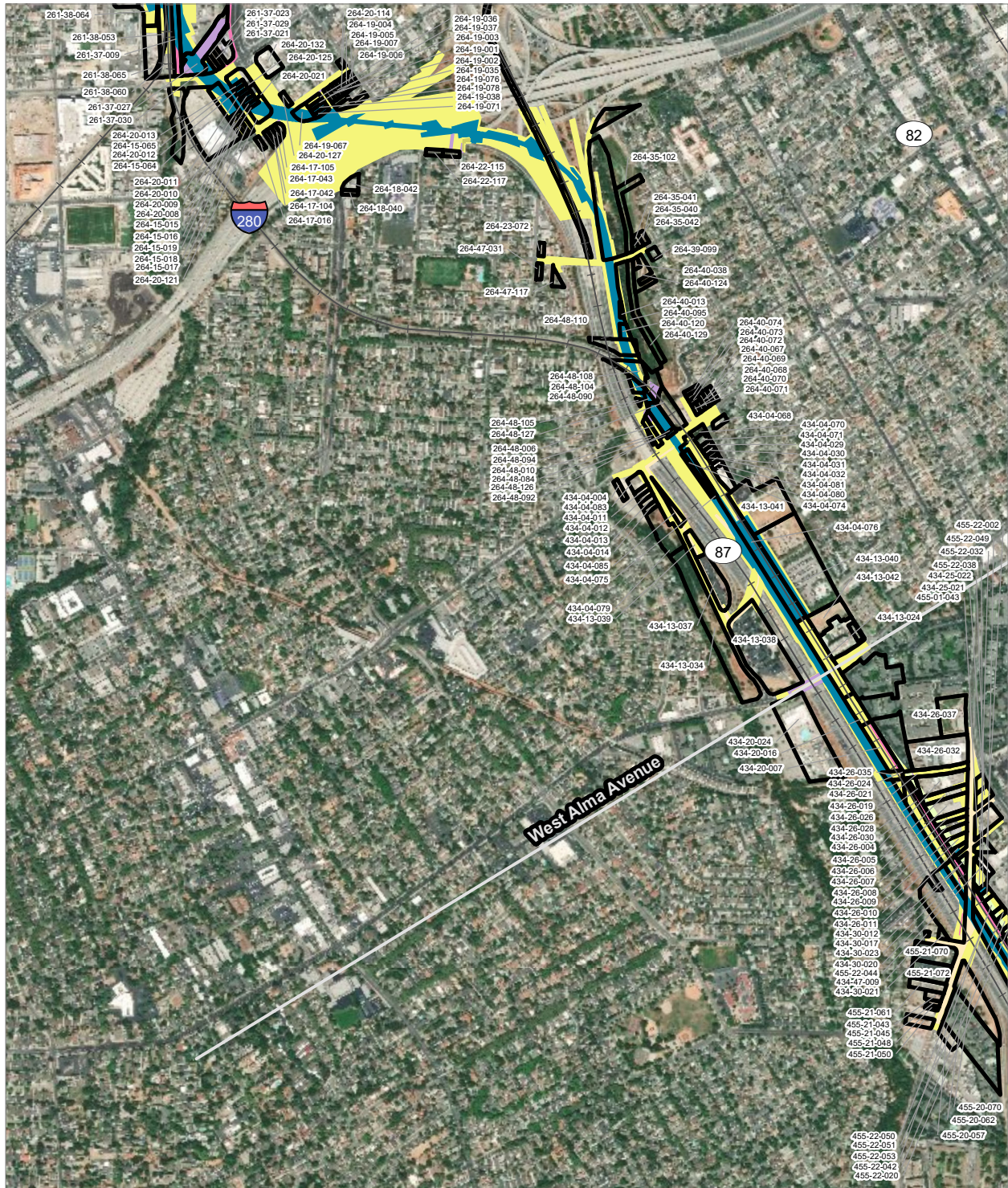
PRELIMINARY DRAFT/SUBJECT TO CHANGE - HSR ALIGNMENT IS NOT DETERMINED
 SOURCE: ESRI, 2019; Santa Clara County, 2016; San Mateo County, 2016, San Francisco County, 2016



- HSR Right-of-Way
- Roadway Right-of-Way
- Rail Right-of-Way
- HSR Permanent Easement
- Permanent Utility Easement
- Temporary Construction Easement
- Temporary Utility Easement
- Parcel (APN Displayed)

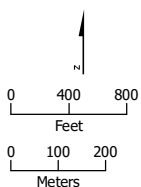
Alternative 3





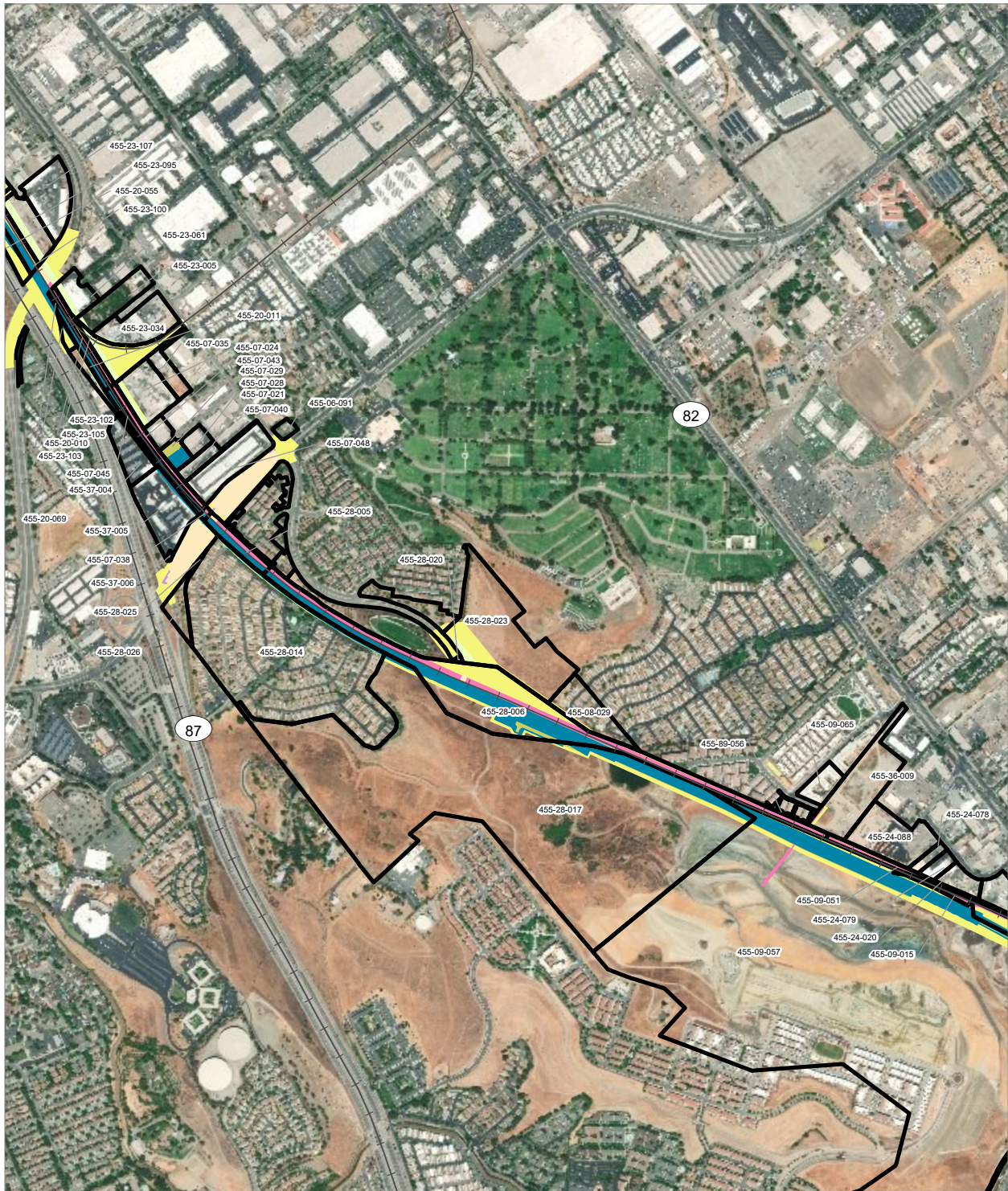
PRELIMINARY DRAFT/SUBJECT TO CHANGE - HSR ALIGNMENT IS NOT DETERMINED
 SOURCE: ESRI, 2019; Santa Clara County, 2016; San Mateo County, 2016; San Francisco County, 2016

Alternative 3

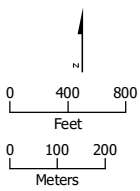


- HSR Right-of-Way
- Roadway Right-of-Way
- Rail Right-of-Way
- HSR Permanent Easement
- Permanent Utility Easement
- Temporary Construction Easement
- Temporary Utility Easement
- Parcel (APN Displayed)





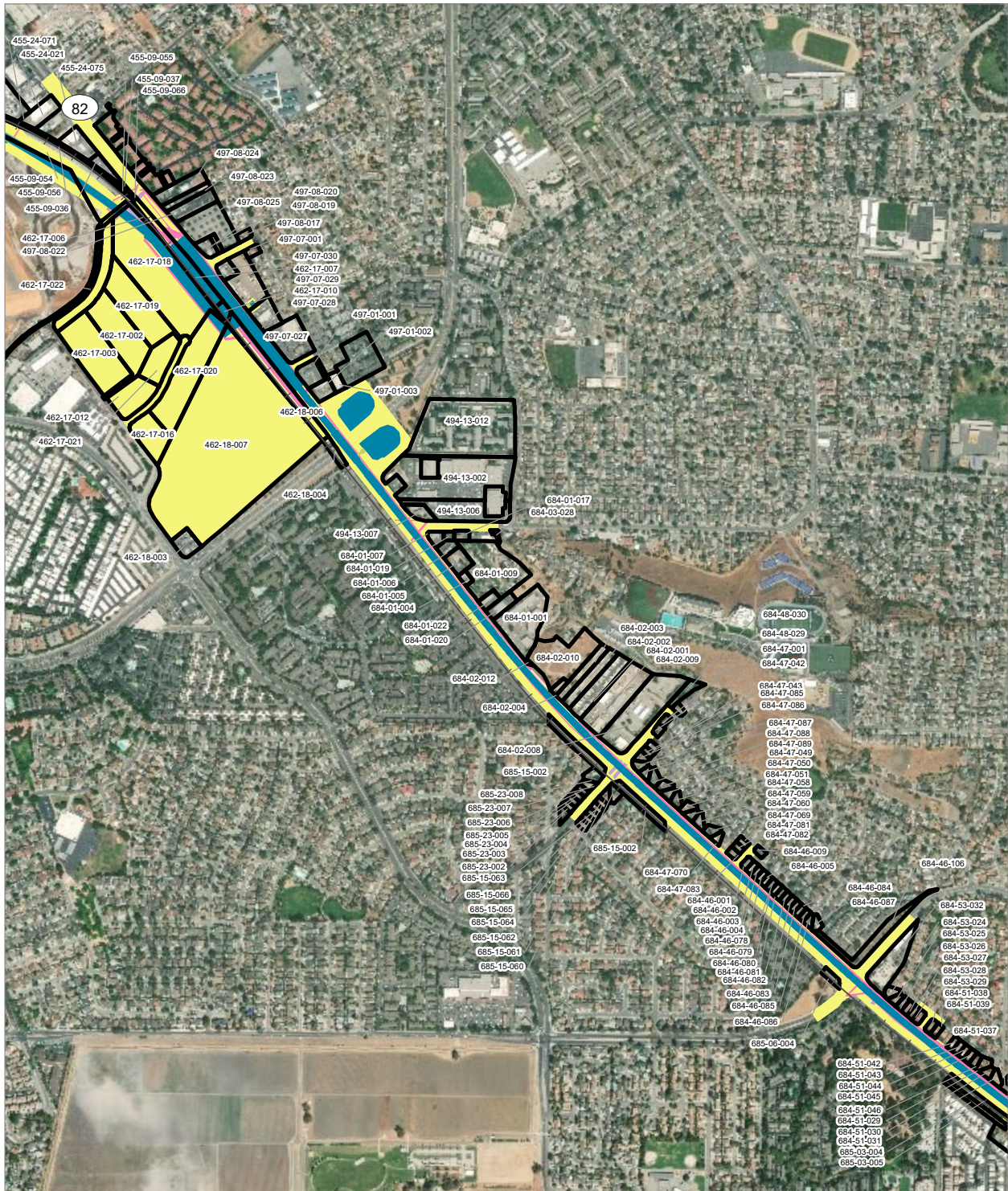
PRELIMINARY DRAFT/SUBJECT TO CHANGE - HSR ALIGNMENT IS NOT DETERMINED
 SOURCE: ESRI, 2019; Santa Clara County, 2016; San Mateo County, 2016; San Francisco County, 2016



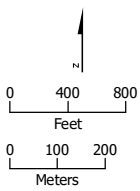
- HSR Right-of-Way
- Roadway Right-of-Way
- Rail Right-of-Way
- HSR Permanent Easement
- Permanent Utility Easement
- Temporary Construction Easement
- Temporary Utility Easement
- Parcel (APN Displayed)

Alternative 3





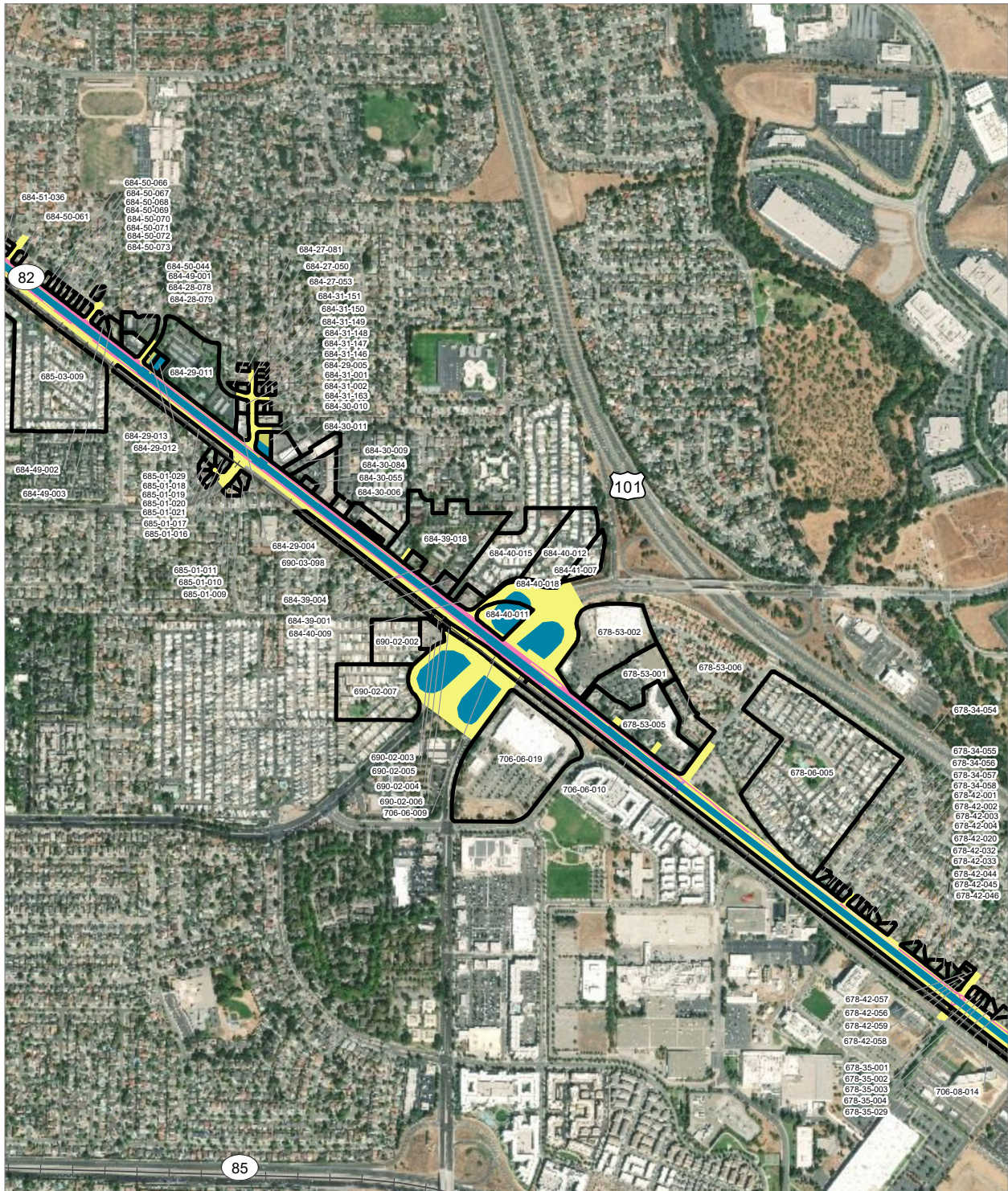
PRELIMINARY DRAFT/SUBJECT TO CHANGE - HSR ALIGNMENT IS NOT DETERMINED
 SOURCE: ESRI, 2019; Santa Clara County, 2016; San Mateo County, 2016; San Francisco County, 2016



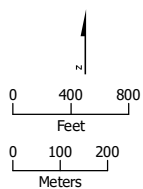
- HSR Right-of-Way
- Roadway Right-of-Way
- Rail Right-of-Way
- HSR Permanent Easement
- Permanent Utility Easement
- Temporary Utility Easement
- Parcel (APN Displayed)

Alternative 3



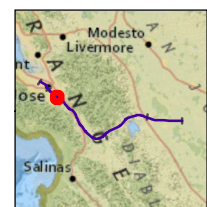


PRELIMINARY DRAFT/SUBJECT TO CHANGE - HSR ALIGNMENT IS NOT DETERMINED
 SOURCE: ESRI, 2019; Santa Clara County, 2016; San Mateo County, 2016; San Francisco County, 2016



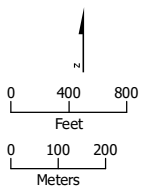
- HSR Right-of-Way
- Roadway Right-of-Way
- HSR Permanent Easement
- Permanent Utility Easement
- Temporary Construction Easement
- Temporary Utility Easement
- Parcel (APN Displayed)

Alternative 3





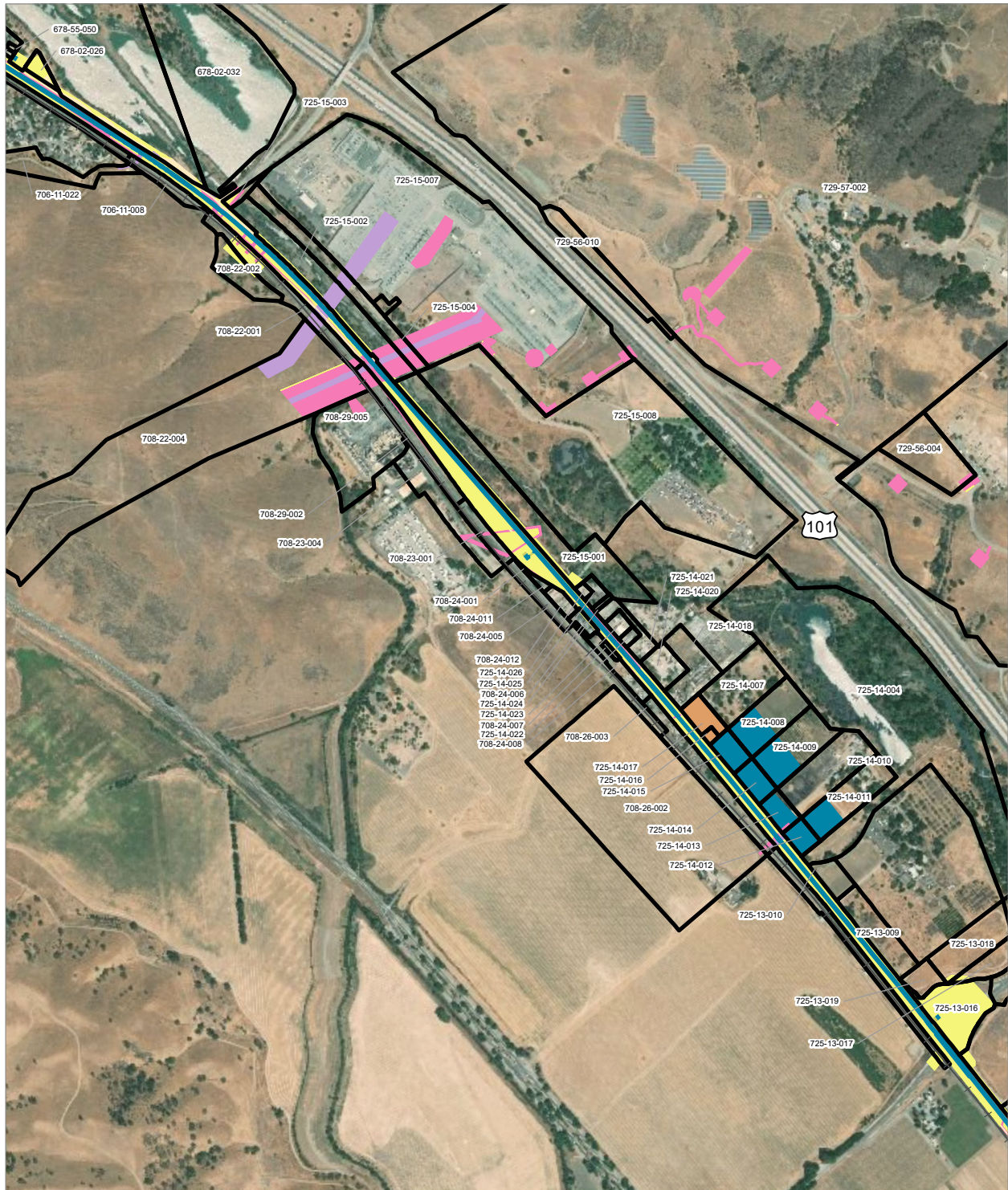
PRELIMINARY DRAFT/SUBJECT TO CHANGE - HSR ALIGNMENT IS NOT DETERMINED
 SOURCE: ESRI, 2019; Santa Clara County, 2016; San Mateo County, 2016; San Francisco County, 2016



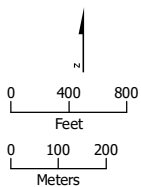
- HSR Right-of-Way
- Roadway Right-of-Way
- HSR Permanent Easement
- Permanent Utility Easement
- Temporary Construction Easement
- Parcel (APN Displayed)

Alternative 3





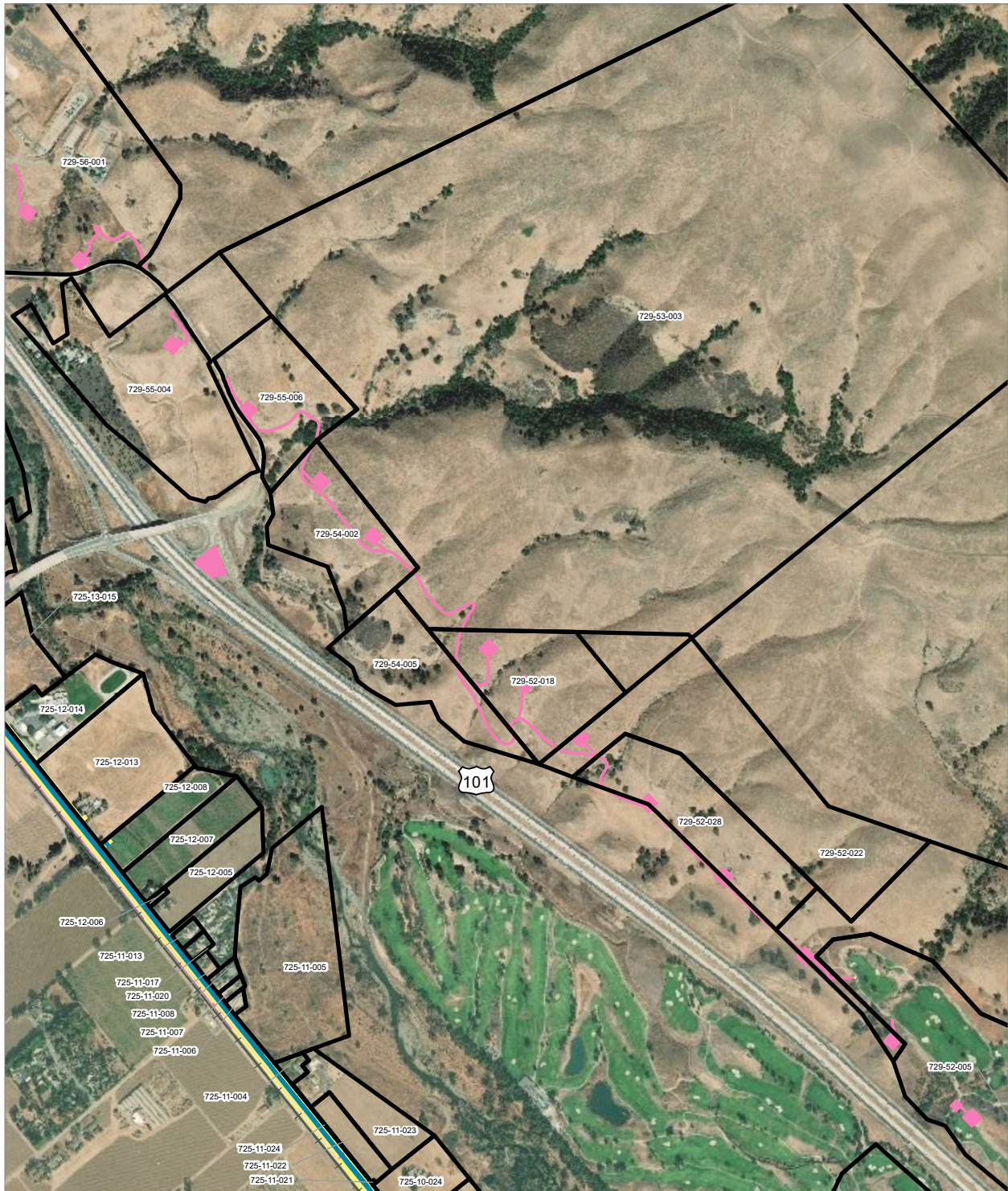
PRELIMINARY DRAFT/SUBJECT TO CHANGE - HSR ALIGNMENT IS NOT DETERMINED
 SOURCE: ESRI, 2019; Santa Clara County, 2016; San Mateo County, 2016, San Francisco County, 2016



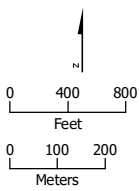
- HSR Right-of-Way
- Temporary Construction Easement
- Temporary Utility Easement
- Non-Viable Remnant Parcel
- Permanent Utility Easement
- Parcel (APN Displayed)

Alternative 3





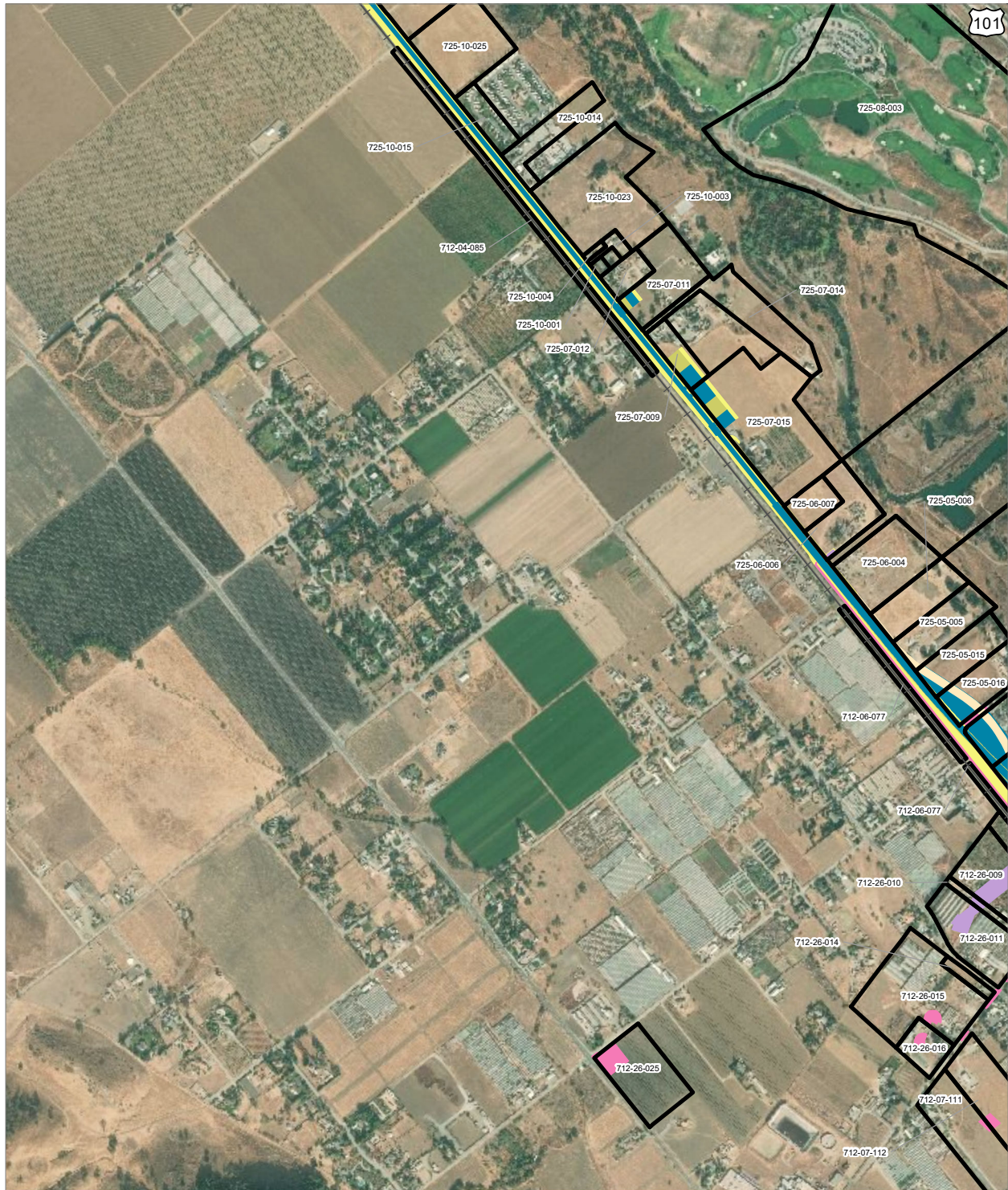
PRELIMINARY DRAFT/SUBJECT TO CHANGE - HSR ALIGNMENT IS NOT DETERMINED
 SOURCE: ESRI, 2019; Santa Clara County, 2016; San Mateo County, 2016; San Francisco County, 2016



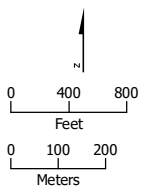
- HSR Right-of-Way
- Roadway Right-of-Way
- HSR Permanent Easement
- Permanent Utility Easement
- Temporary Construction Easement
- Parcel (APN Displayed)

Alternative 3





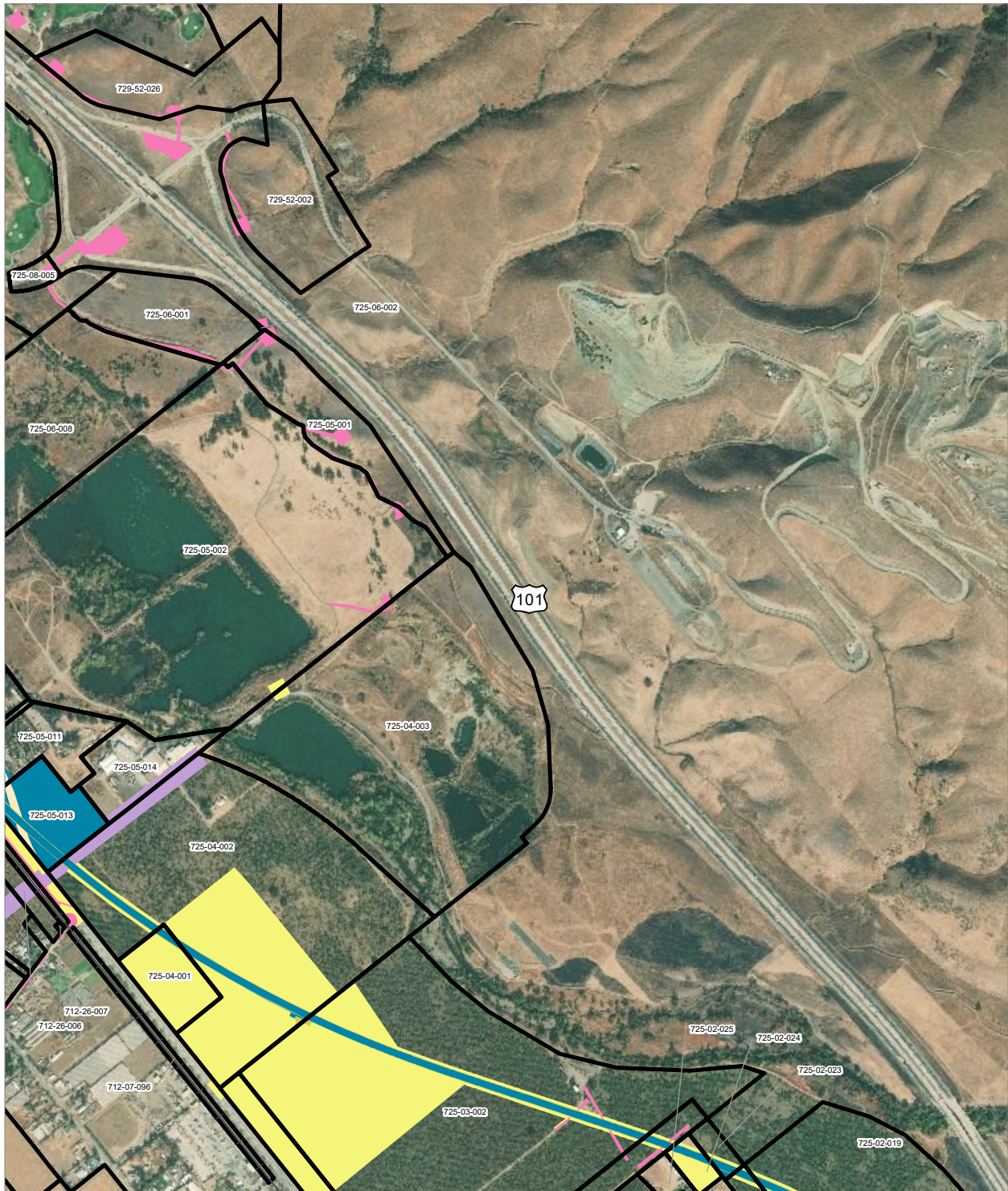
PRELIMINARY DRAFT/SUBJECT TO CHANGE - HSR ALIGNMENT IS NOT DETERMINED
 SOURCE: ESRI, 2019; Santa Clara County, 2016; San Mateo County, 2016, San Francisco County, 2016



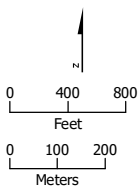
- HSR Right-of-Way
- Temporary Construction Easement
- Roadway Right-of-Way
- HSR Permanent Easement
- Temporary Utility Easement
- Permanent Utility Easement
- Non-Viable Remnant Parcel
- Parcel (APN Displayed)

Alternative 3





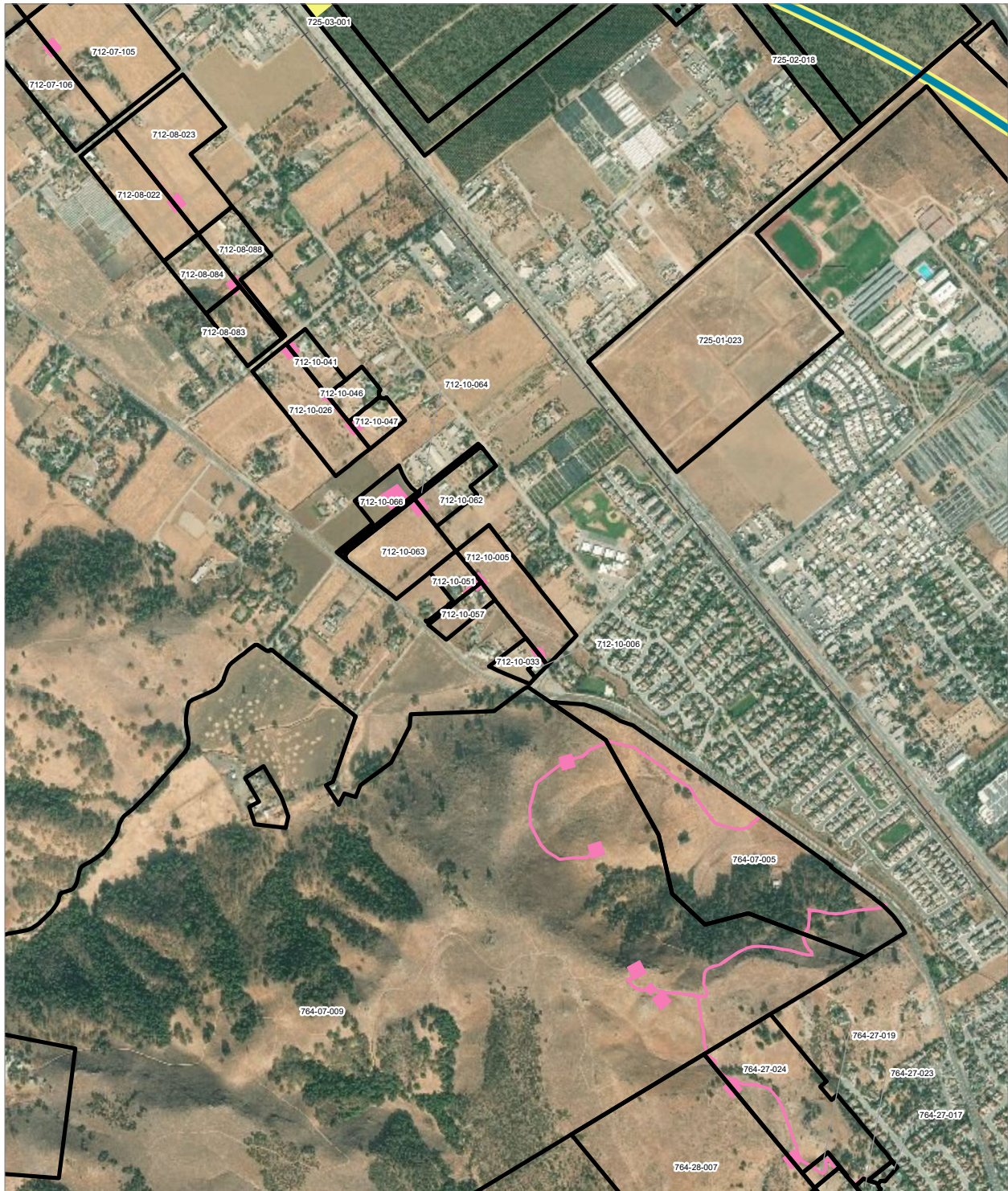
PRELIMINARY DRAFT/SUBJECT TO CHANGE - HSR ALIGNMENT IS NOT DETERMINED
 SOURCE: ESRI, 2019; Santa Clara County, 2016; San Mateo County, 2016, San Francisco County, 2016



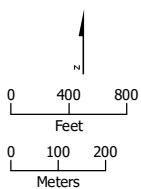
- HSR Right-of-Way
- Roadway Right-of-Way
- HSR Permanent Easement
- Permanent Utility Easement
- Temporary Construction Easement
- Temporary Utility Easement
- Non-Viable Remnant Parcel
- Parcel (APN Displayed)

Alternative 3





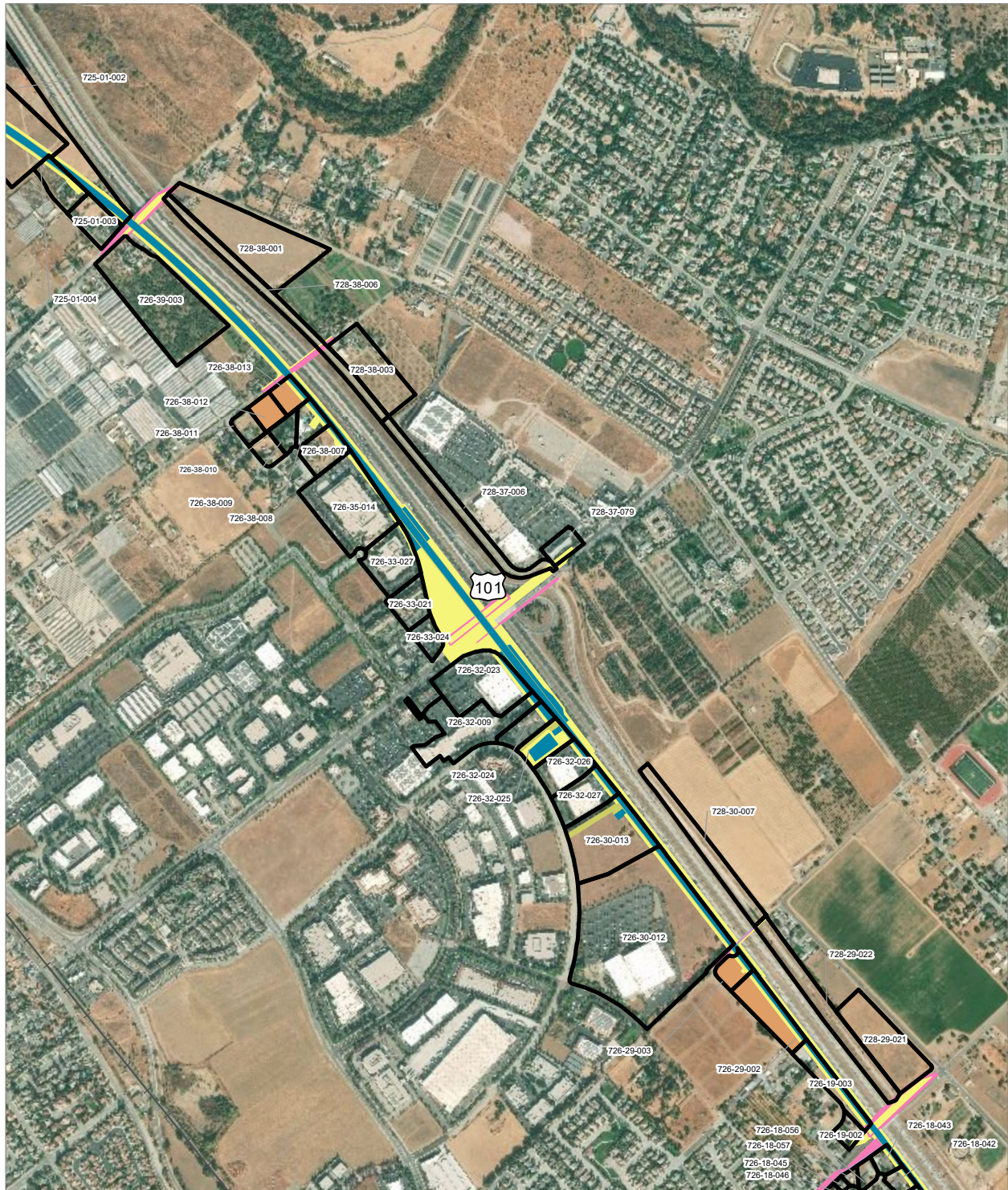
PRELIMINARY DRAFT/SUBJECT TO CHANGE - HSR ALIGNMENT IS NOT DETERMINED
 SOURCE: ESRI, 2019; Santa Clara County, 2016; San Mateo County, 2016, San Francisco County, 2016



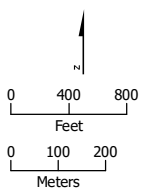
- HSR Right-of-Way
- Temporary Construction Easement
- Temporary Utility Easement
- Permanent Utility Easement
- Non-Viable Remnant Parcel
- Parcel (APN Displayed)

Alternative 3





PRELIMINARY DRAFT/SUBJECT TO CHANGE - HSR ALIGNMENT IS NOT DETERMINED
 SOURCE: ESRI, 2019; Santa Clara County, 2016; San Mateo County, 2016; San Francisco County, 2016



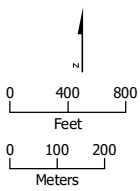
- HSR Right-of-Way
- HSR Permanent Easement
- Permanent Utility Easement
- Temporary Construction Easement
- Temporary Utility Easement
- Non-Viable Remnant Parcel
- Parcel (APN Displayed)

Alternative 3





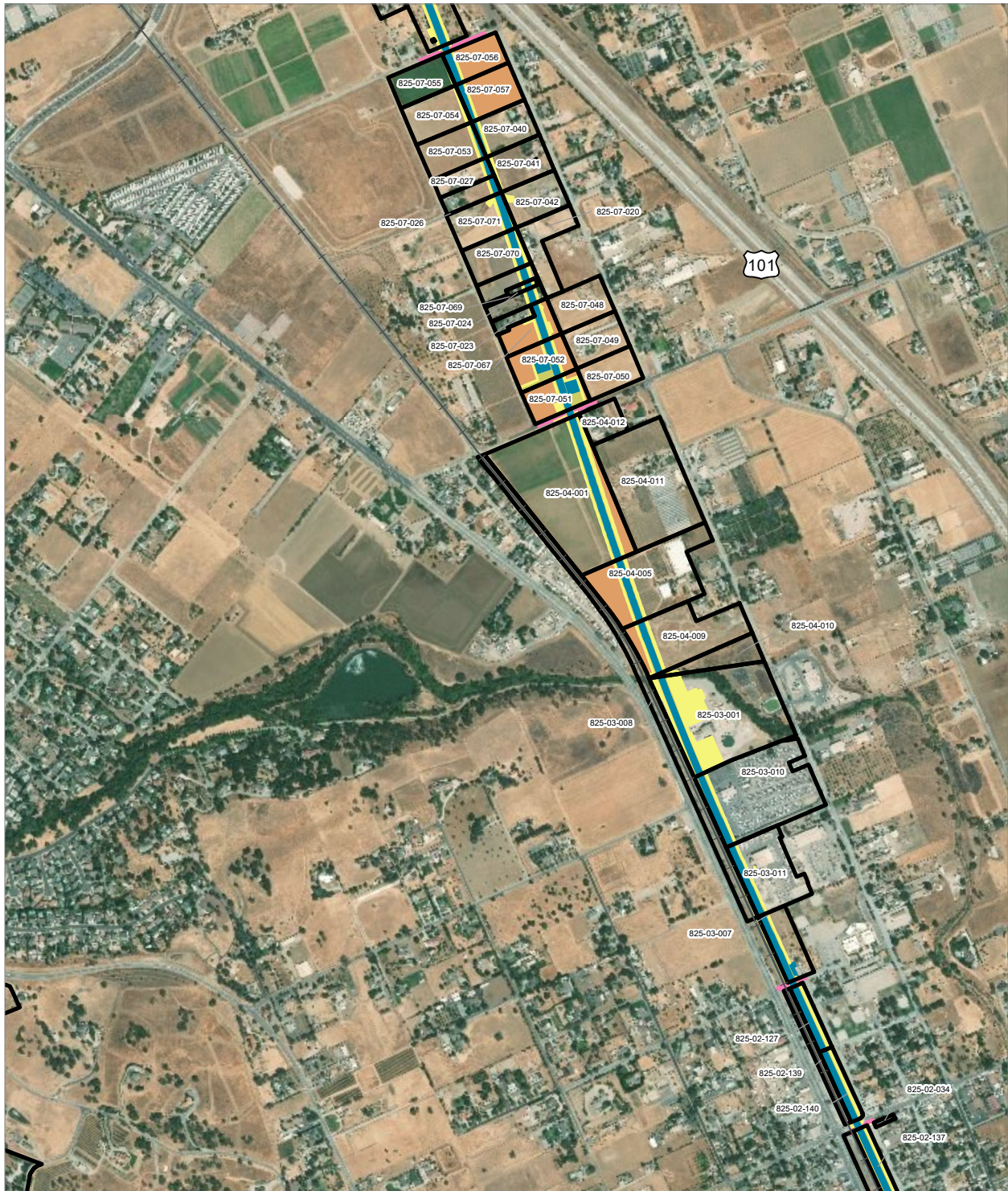
PRELIMINARY DRAFT/SUBJECT TO CHANGE - HSR ALIGNMENT IS NOT DETERMINED
 SOURCE: ESRI, 2019; Santa Clara County, 2016; San Mateo County, 2016, San Francisco County, 2016



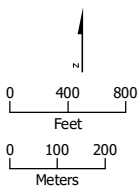
- Permanent Utility Easement
- Temporary Utility Easement
- Temporary Construction Easement
- Parcel (APN Displayed)

Alternative 3





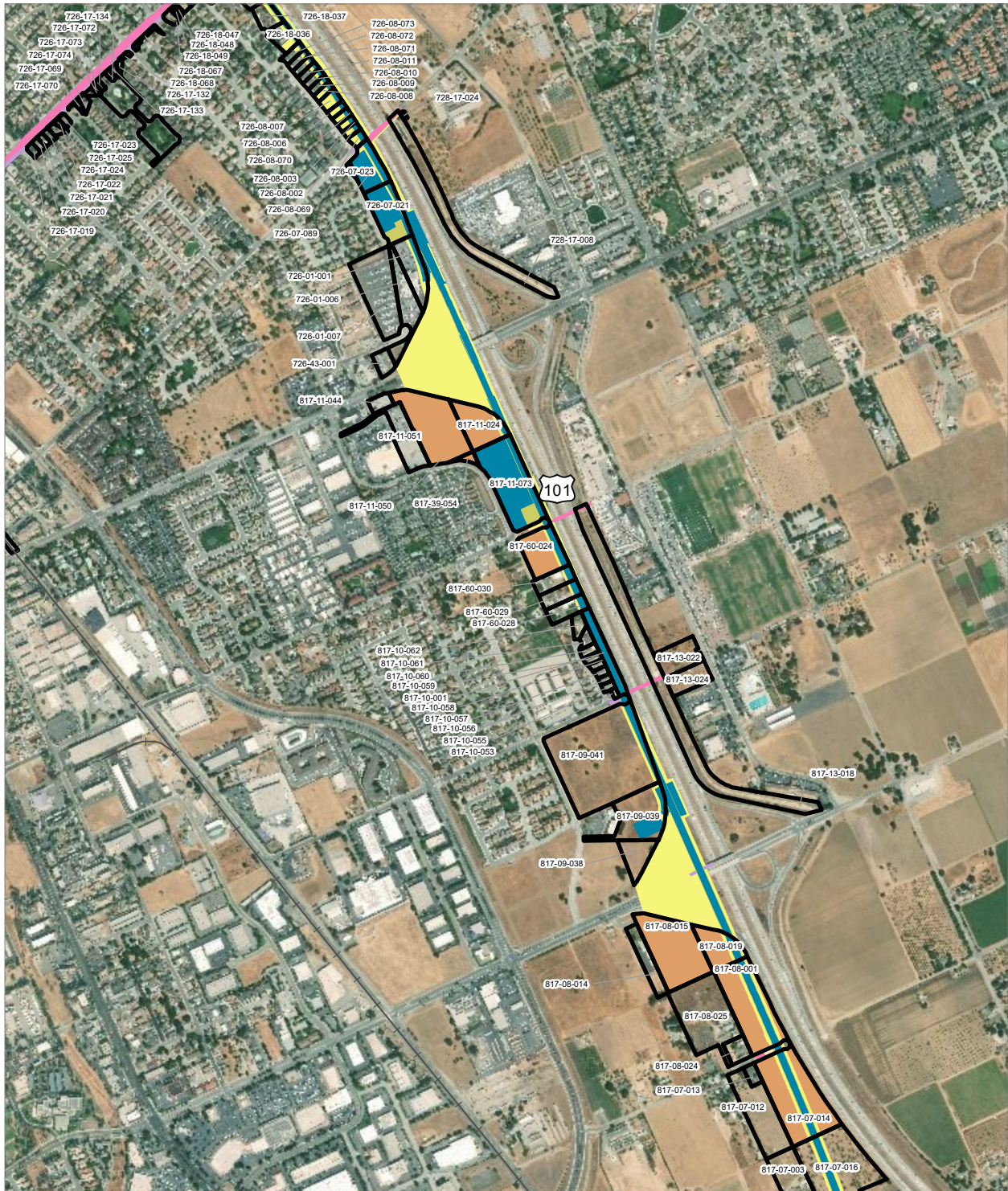
PRELIMINARY DRAFT/SUBJECT TO CHANGE - HSR ALIGNMENT IS NOT DETERMINED
 SOURCE: ESRI, 2019; Santa Clara County, 2016; San Mateo County, 2016, San Francisco County, 2016



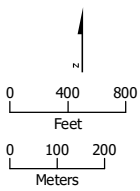
- HSR Right-of-Way
- Temporary Construction Easement
- HSR Permanent Easement
- Non-Viable Remnant Parcel
- Permanent Utility Easement
- Parcel (APN Displayed)

Alternative 3





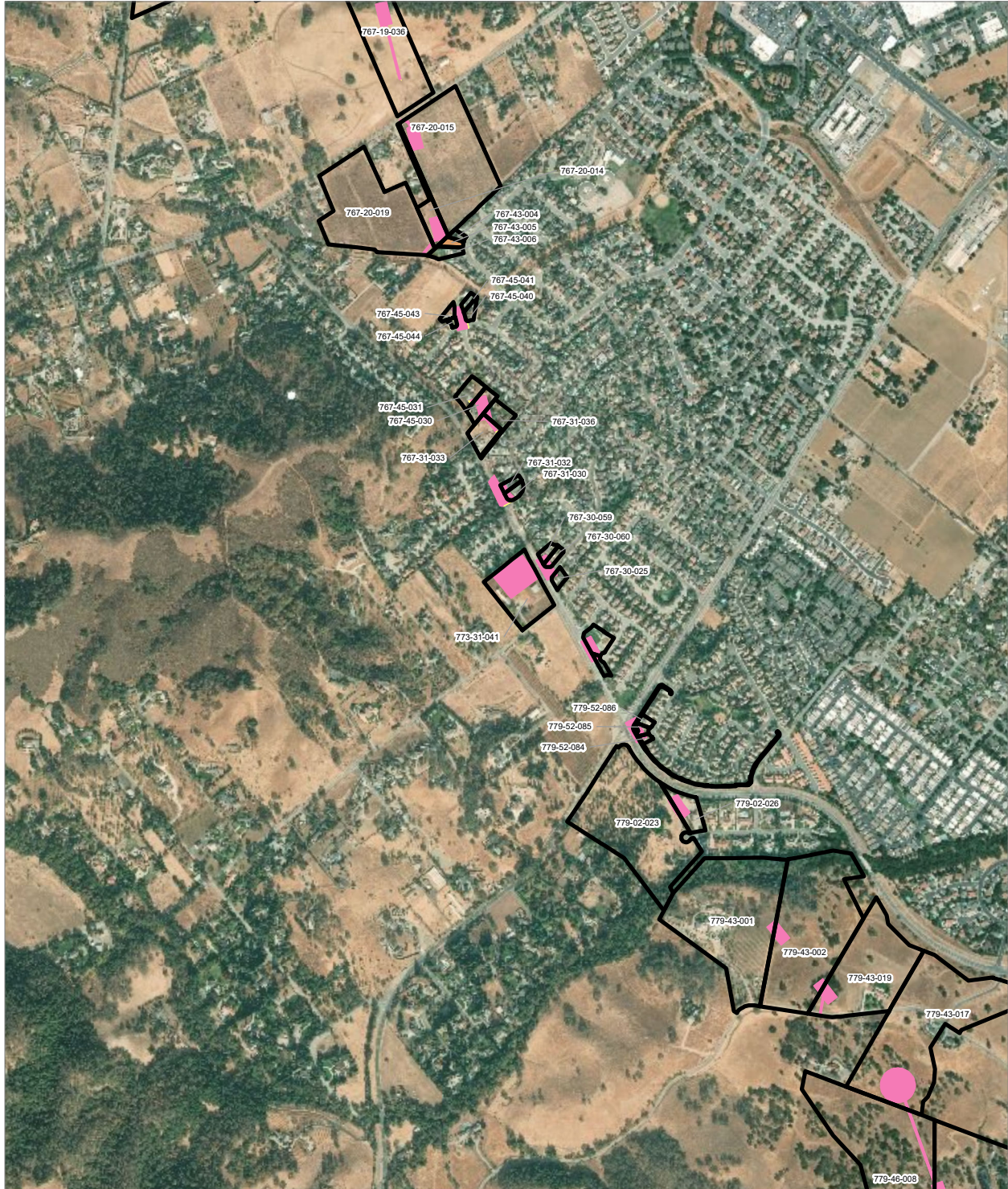
PRELIMINARY DRAFT/SUBJECT TO CHANGE - HSR ALIGNMENT IS NOT DETERMINED
 SOURCE: ESRI, 2019; Santa Clara County, 2016; San Mateo County, 2016; San Francisco County, 2016



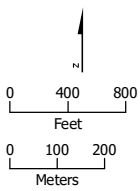
- HSR Right-of-Way
- Temporary Construction Easement
- Roadway Right-of-Way
- Temporary Utility Easement
- HSR Permanent Easement
- Non-Viable Remnant Parcel
- Permanent Utility Easement
- Parcel (APN Displayed)

Alternative 3





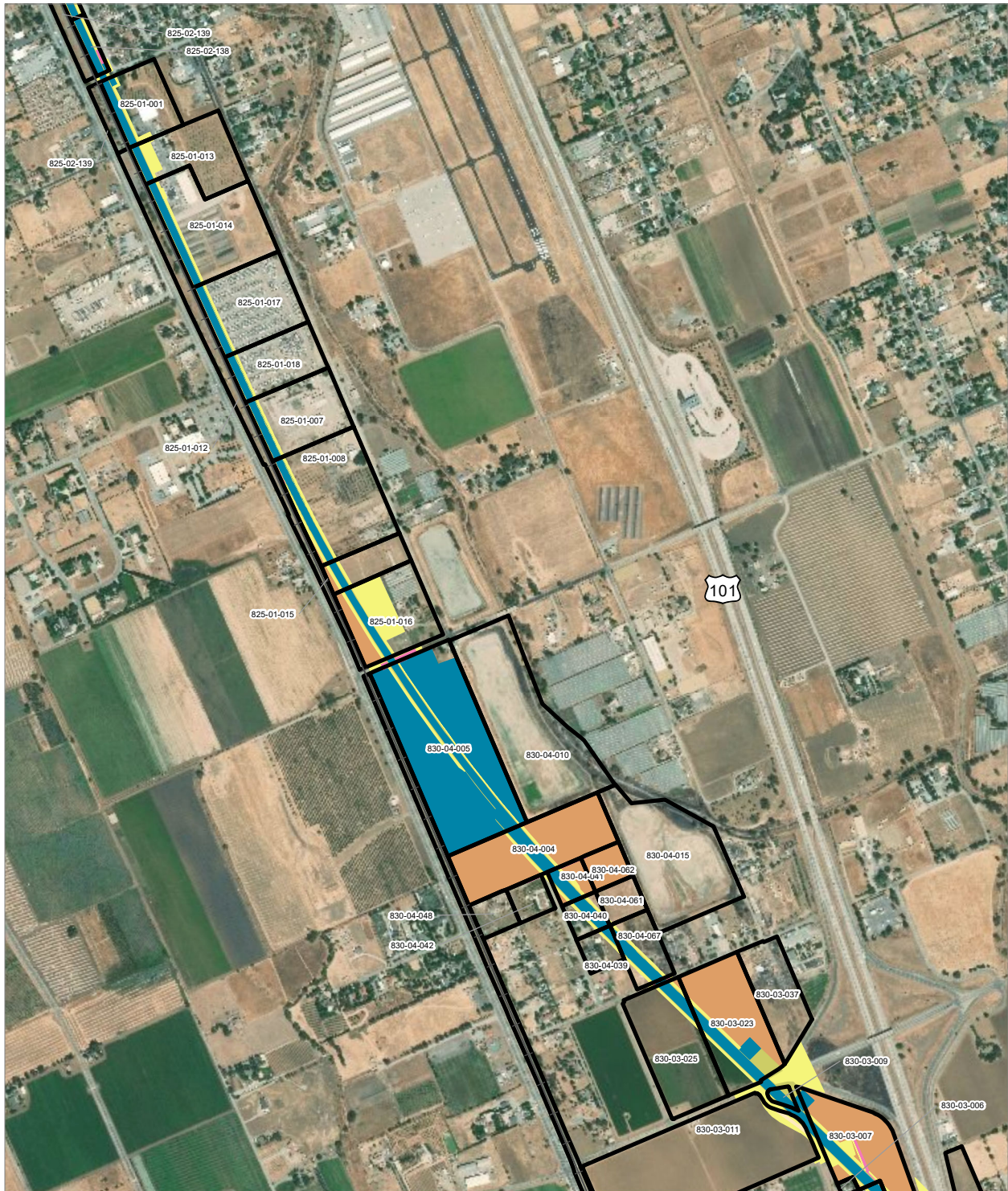
PRELIMINARY DRAFT/SUBJECT TO CHANGE - HSR ALIGNMENT IS NOT DETERMINED
 SOURCE: ESRI, 2019; Santa Clara County, 2016; San Mateo County, 2016, San Francisco County, 2016



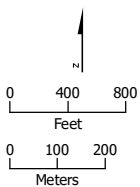
- Permanent Utility Easement
- Non-Viable Remnant Parcel
- Temporary Construction Easement
- Parcel (APN Displayed)

Alternative 3





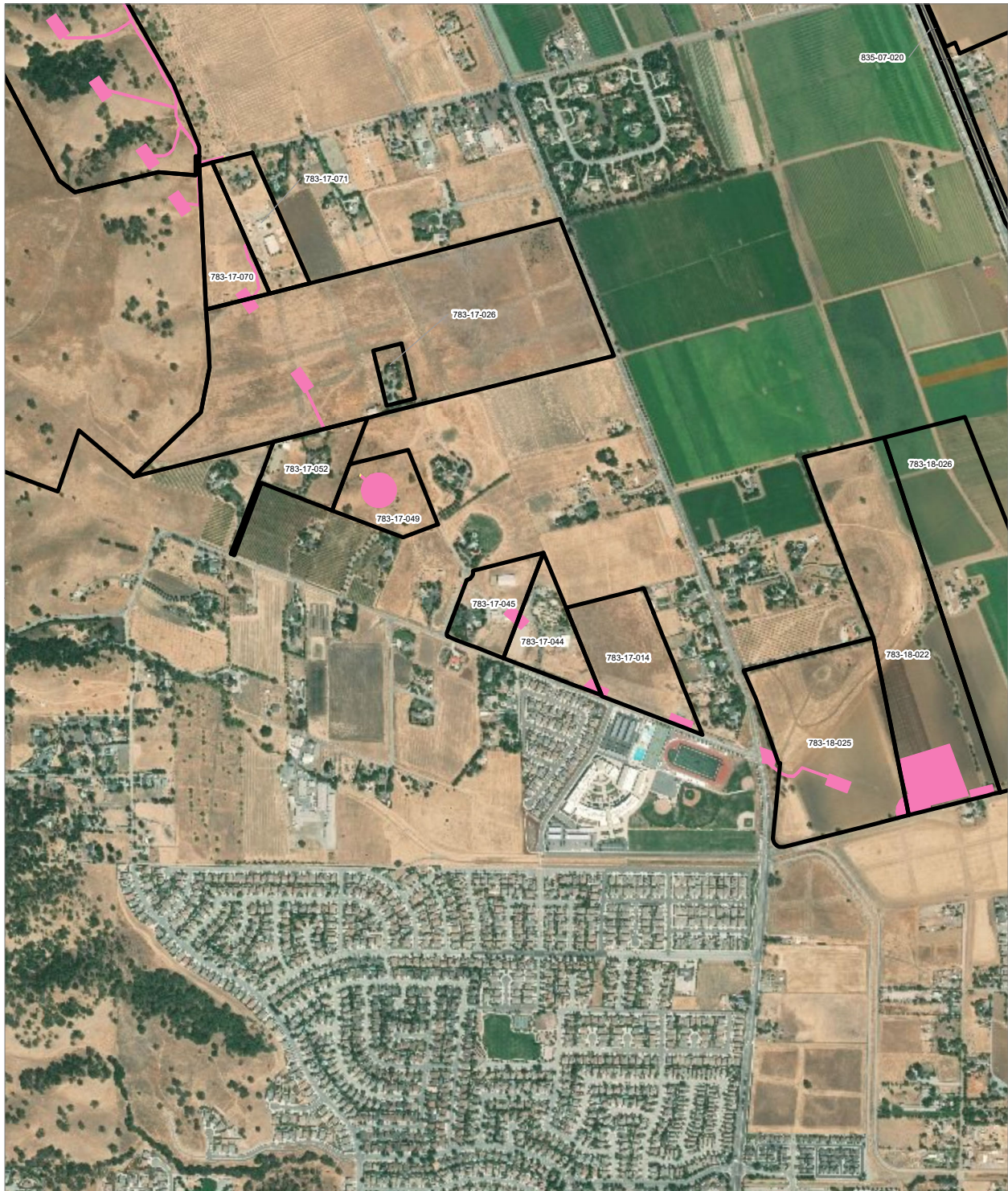
PRELIMINARY DRAFT/SUBJECT TO CHANGE - HSR ALIGNMENT IS NOT DETERMINED
 SOURCE: ESRI, 2019; Santa Clara County, 2016; San Mateo County, 2016, San Francisco County, 2016



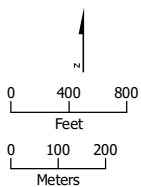
- HSR Right-of-Way
- Roadway Right-of-Way
- HSR Permanent Easement
- Permanent Utility Easement
- Temporary Construction Easement
- Non-Viable Remnant Parcel
- Parcel (APN Displayed)

Alternative 3





PRELIMINARY DRAFT/SUBJECT TO CHANGE - HSR ALIGNMENT IS NOT DETERMINED
 SOURCE: ESRI, 2019; Santa Clara County, 2016; San Mateo County, 2016, San Francisco County, 2016

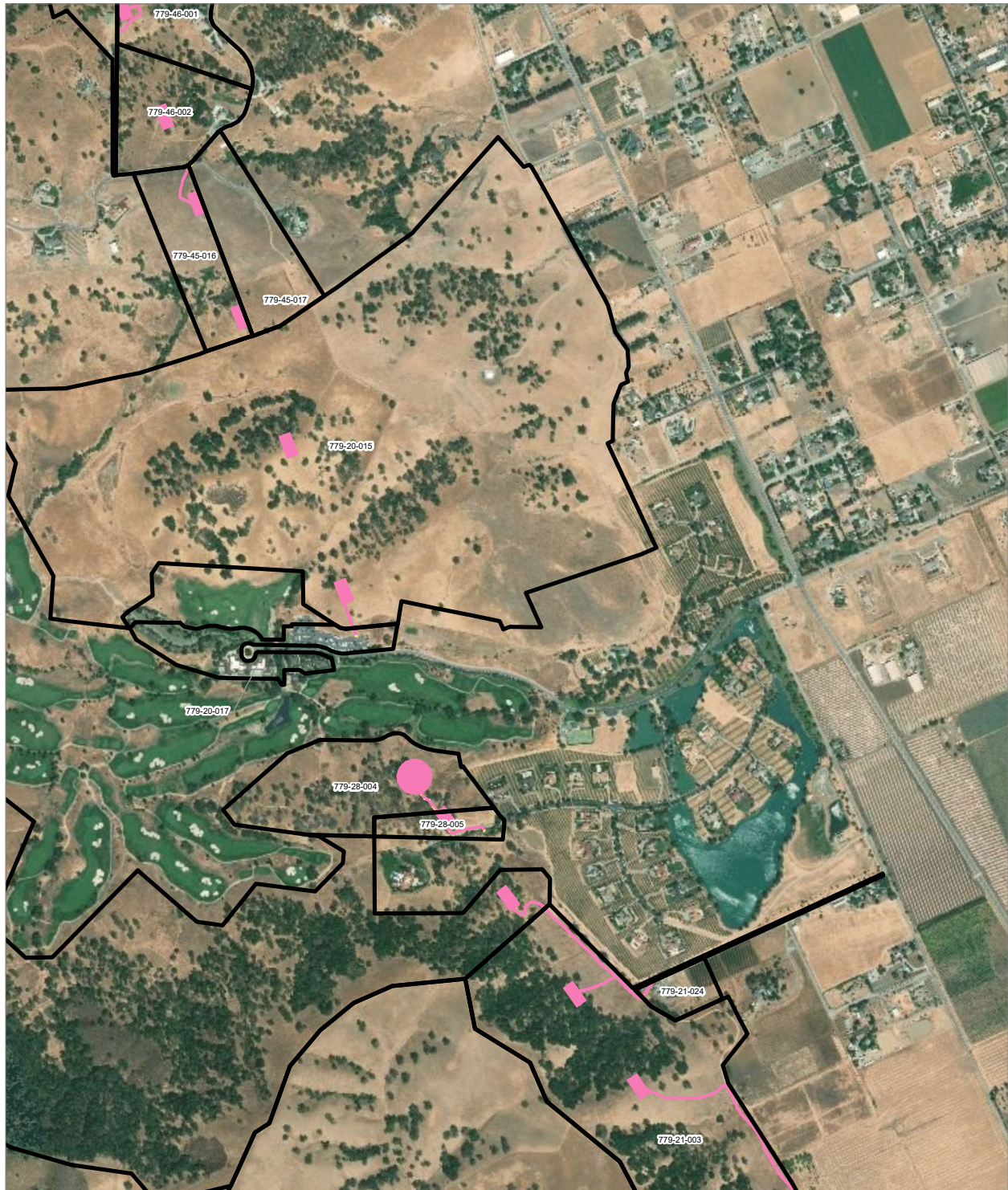


-
 Permanent Utility Easement
 Temporary Construction Easement

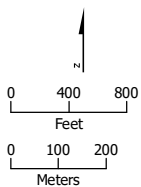
-
 Parcel (APN Displayed)

Alternative 3





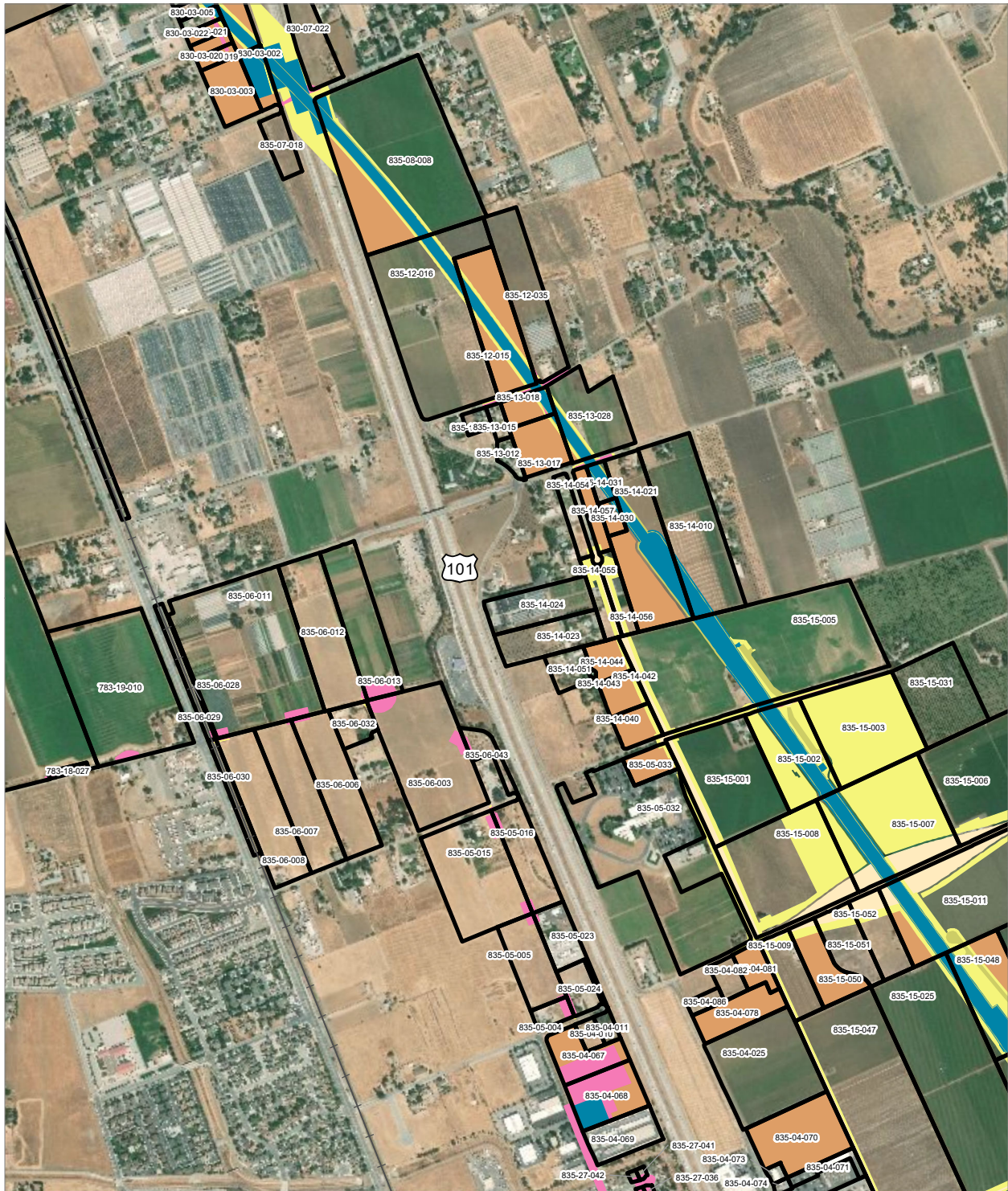
PRELIMINARY DRAFT/SUBJECT TO CHANGE - HSR ALIGNMENT IS NOT DETERMINED
 SOURCE: ESRI, 2019; Santa Clara County, 2016; San Mateo County, 2016; San Francisco County, 2016



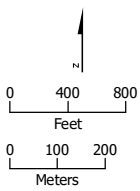
- Permanent Utility Easement
- Temporary Construction Easement
- Parcel (APN Displayed)

Alternative 3





PRELIMINARY DRAFT/SUBJECT TO CHANGE - HSR ALIGNMENT IS NOT DETERMINED
 SOURCE: ESRI, 2019; Santa Clara County, 2016; San Mateo County, 2016, San Francisco County, 2016



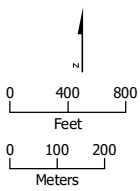
- HSR Right-of-Way
- Roadway Right-of-Way
- HSR Permanent Easement
- Permanent Utility Easement
- Temporary Construction Easement
- Non-Viable Remnant Parcel
- Parcel (APN Displayed)

Alternative 3





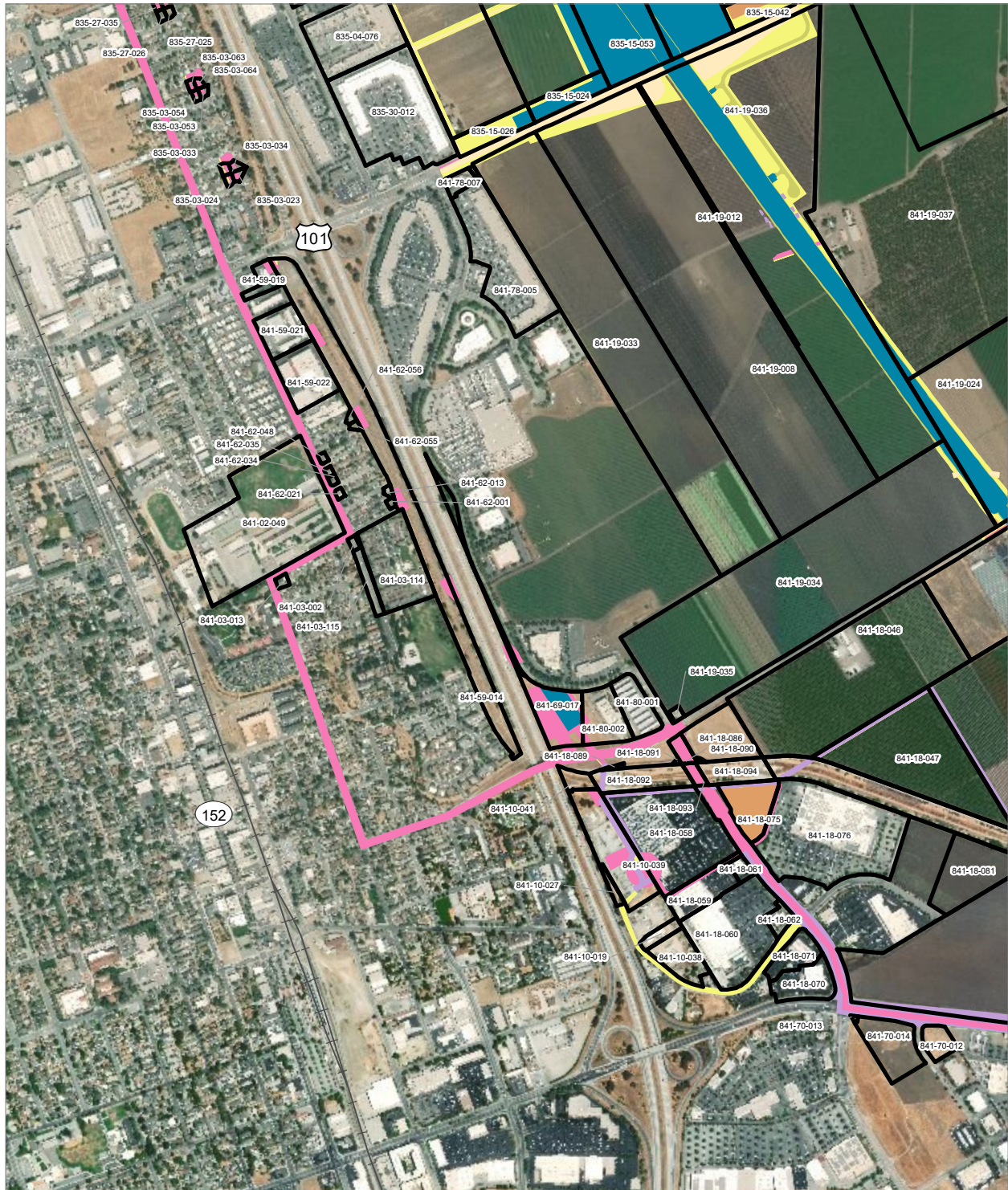
PRELIMINARY DRAFT/SUBJECT TO CHANGE - HSR ALIGNMENT IS NOT DETERMINED
 SOURCE: ESRI, 2019; Santa Clara County, 2016; San Mateo County, 2016; San Francisco County, 2016



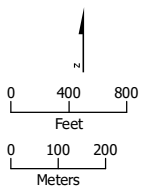
- HSR Right-of-Way
- Roadway Right-of-Way
- HSR Permanent Easement
- Permanent Utility Easement
- Temporary Construction Easement
- Non-Viable Remnant Parcel
- Parcel (APN Displayed)

Alternative 3





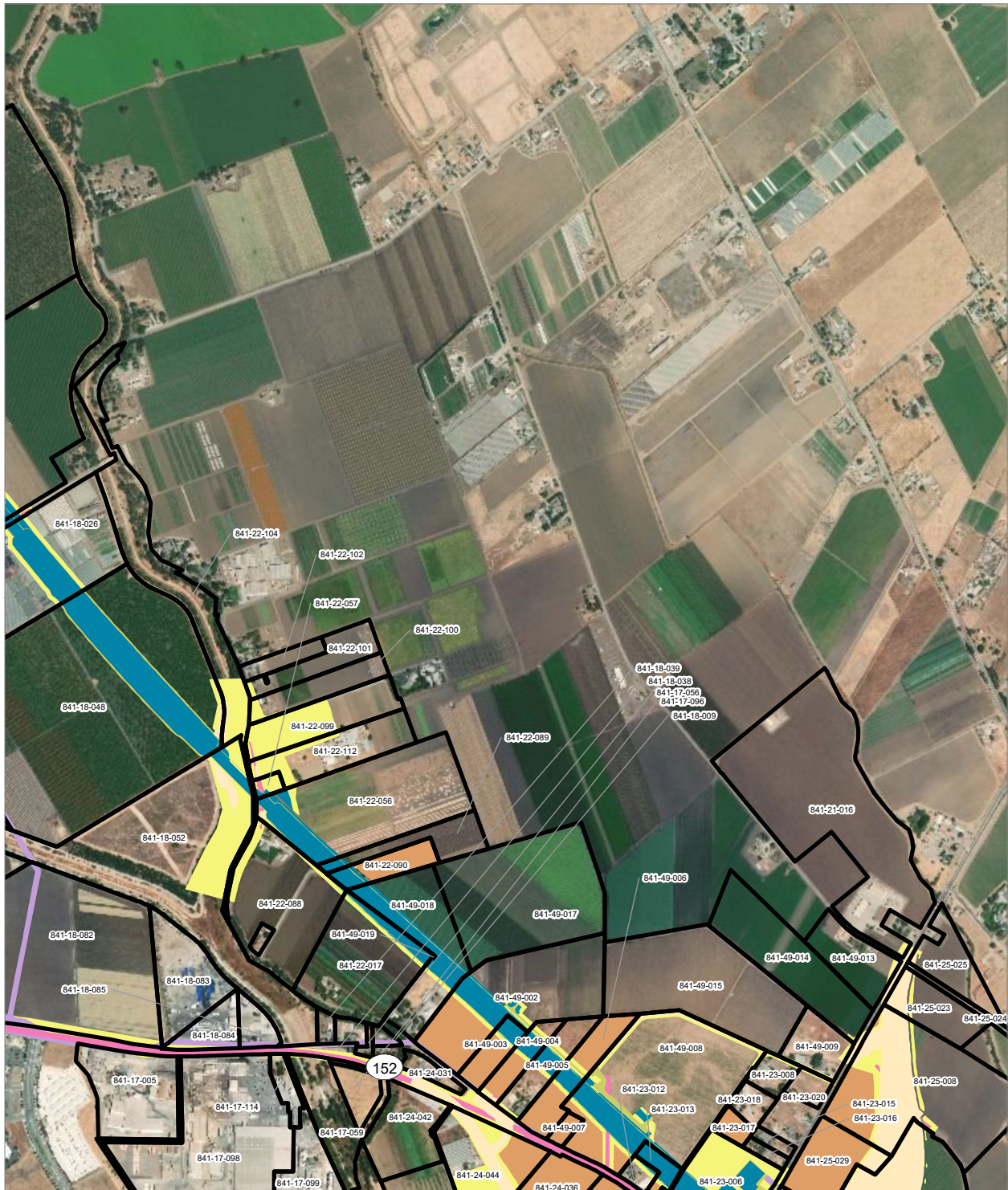
PRELIMINARY DRAFT/SUBJECT TO CHANGE - HSR ALIGNMENT IS NOT DETERMINED
 SOURCE: ESRI, 2019; Santa Clara County, 2016; San Mateo County, 2016; San Francisco County, 2016



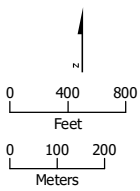
- HSR Right-of-Way
- Roadway Right-of-Way
- HSR Permanent Easement
- Permanent Utility Easement
- Temporary Construction Easement
- Temporary Utility Easement
- Non-Viable Remnant Parcel
- Parcel (APN Displayed)

Alternative 3





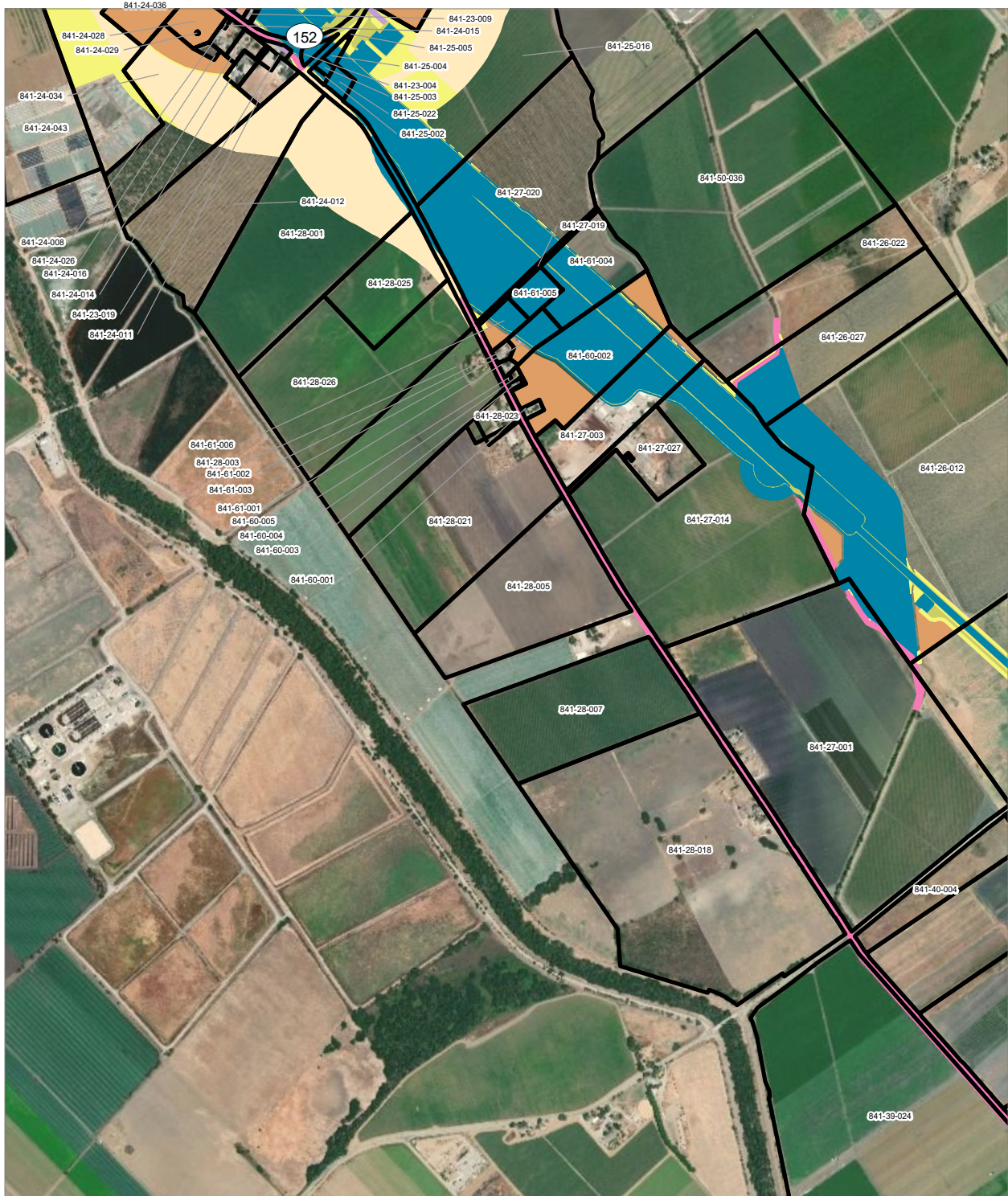
PRELIMINARY DRAFT/SUBJECT TO CHANGE - HSR ALIGNMENT IS NOT DETERMINED
 SOURCE: ESRI, 2019; Santa Clara County, 2016; San Mateo County, 2016; San Francisco County, 2016



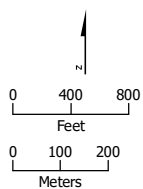
- HSR Right-of-Way
- Roadway Right-of-Way
- HSR Permanent Easement
- Permanent Utility Easement
- Temporary Construction Easement
- Temporary Utility Easement
- Non-Viable Remnant Parcel
- Parcel (APN Displayed)

Alternative 3



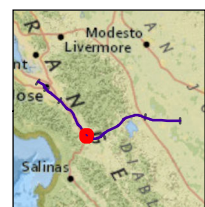


PRELIMINARY DRAFT/SUBJECT TO CHANGE - HSR ALIGNMENT IS NOT DETERMINED
 SOURCE: ESRI, 2019; Santa Clara County, 2016; San Mateo County, 2016, San Francisco County, 2016



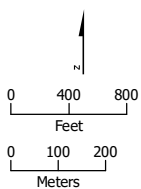
- HSR Right-of-Way
- Roadway Right-of-Way
- HSR Permanent Easement
- Permanent Utility Easement
- Temporary Construction Easement
- Temporary Utility Easement
- Non-Viable Remnant Parcel
- Parcel (APN Displayed)

Alternative 3





PRELIMINARY DRAFT/SUBJECT TO CHANGE - HSR ALIGNMENT IS NOT DETERMINED
 SOURCE: ESRI, 2019; Santa Clara County, 2016; San Mateo County, 2016; San Francisco County, 2016



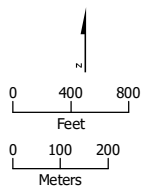
- HSR Right-of-Way
- Temporary Construction Easement
- HSR Permanent Easement
- Temporary Utility Easement
- Permanent Utility Easement
- Non-Viable Remnant Parcel
- Parcel (APN Displayed)

Alternative 3





PRELIMINARY DRAFT/SUBJECT TO CHANGE - HSR ALIGNMENT IS NOT DETERMINED
 SOURCE: ESRI, 2019; Santa Clara County, 2016; San Mateo County, 2016, San Francisco County, 2016



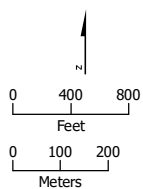
- HSR Right-of-Way
- Temporary Construction Easement
- Roadway Right-of-Way
- Temporary Utility Easement
- Parcel (APN Displayed)

Alternative 3



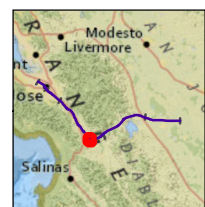


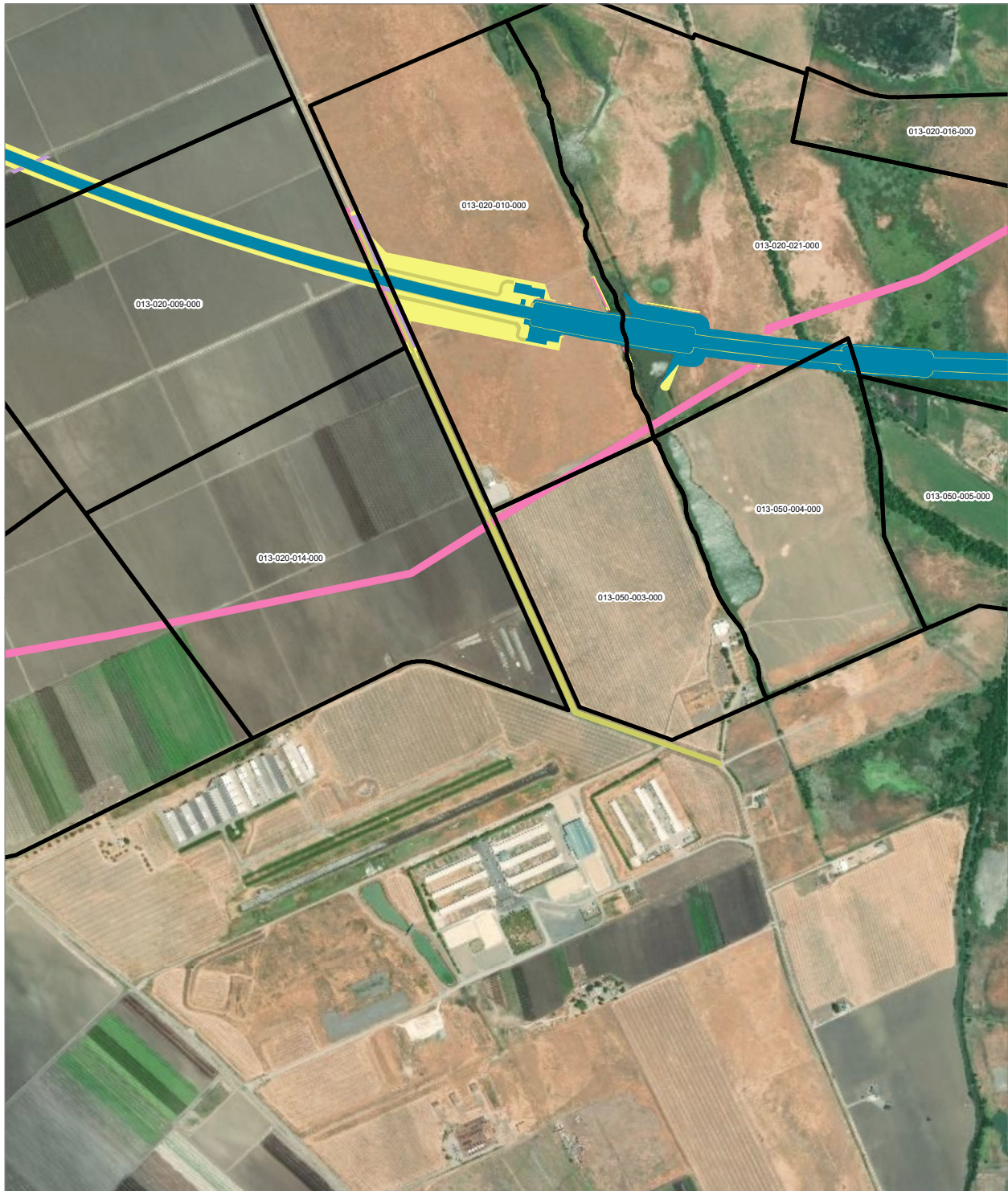
PRELIMINARY DRAFT/SUBJECT TO CHANGE - HSR ALIGNMENT IS NOT DETERMINED
 SOURCE: ESRI, 2019; Santa Clara County, 2016; San Mateo County, 2016, San Francisco County, 2016



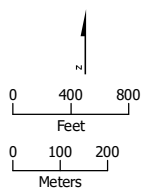
- HSR Right-of-Way
- Temporary Construction Easement
- HSR Permanent Easement
- Temporary Utility Easement
- Permanent Utility Easement
- Parcel (APN Displayed)

Alternative 3





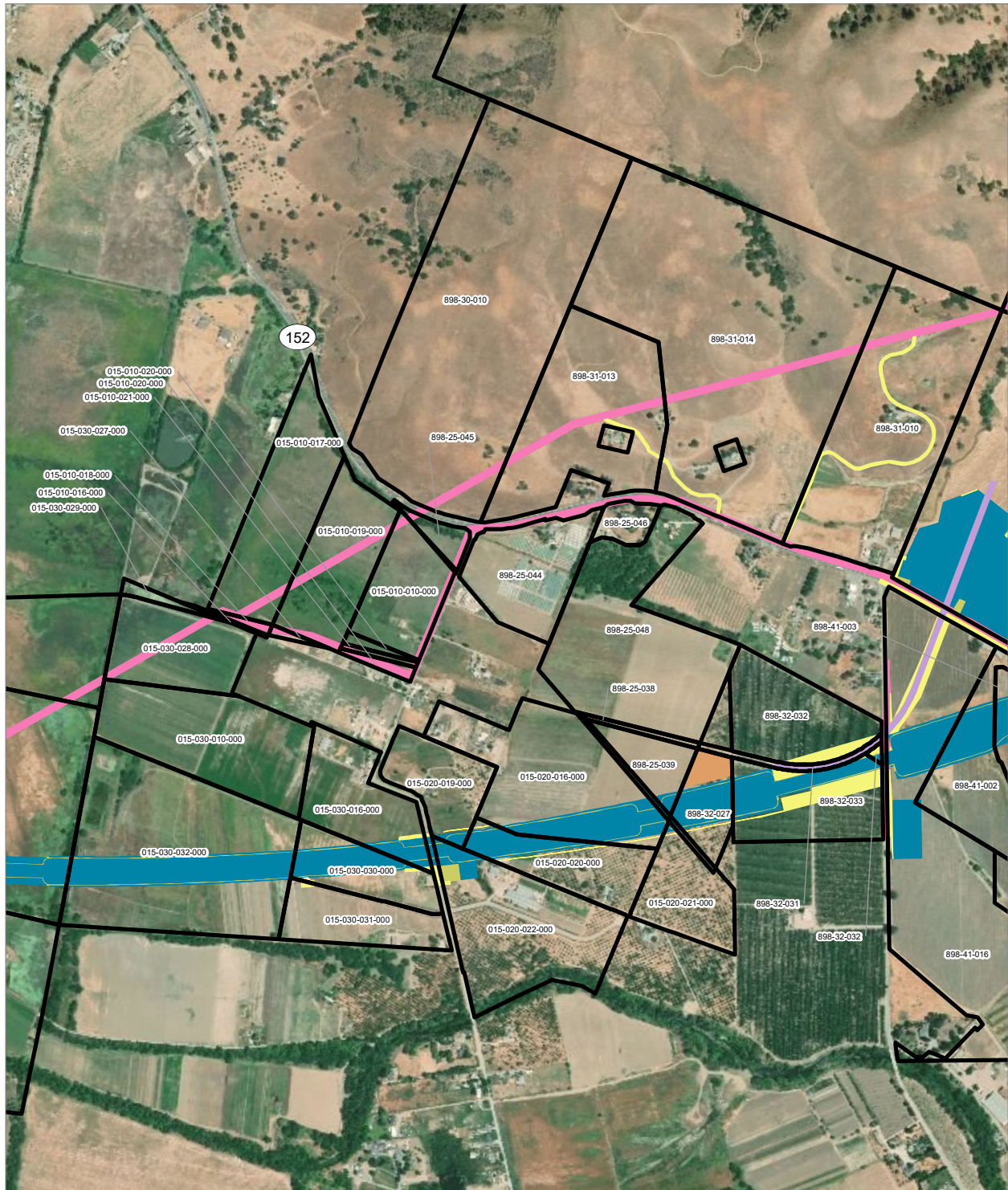
PRELIMINARY DRAFT/SUBJECT TO CHANGE - HSR ALIGNMENT IS NOT DETERMINED
 SOURCE: ESRI, 2019; Santa Clara County, 2016; San Mateo County, 2016, San Francisco County, 2016



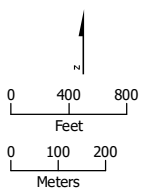
- HSR Right-of-Way
- Temporary Construction Easement
- HSR Permanent Easement
- Temporary Utility Easement
- Permanent Utility Easement
- Non-Viable Remnant Parcel
- Parcel (APN Displayed)

Alternative 3





PRELIMINARY DRAFT/SUBJECT TO CHANGE - HSR ALIGNMENT IS NOT DETERMINED
 SOURCE: ESRI, 2019; Santa Clara County, 2016; San Mateo County, 2016, San Francisco County, 2016



- HSR Right-of-Way
- Roadway Right-of-Way
- HSR Permanent Easement
- Permanent Utility Easement
- Temporary Construction Easement
- Temporary Utility Easement
- Non-Viable Remnant Parcel
- Parcel (APN Displayed)

Alternative 3

