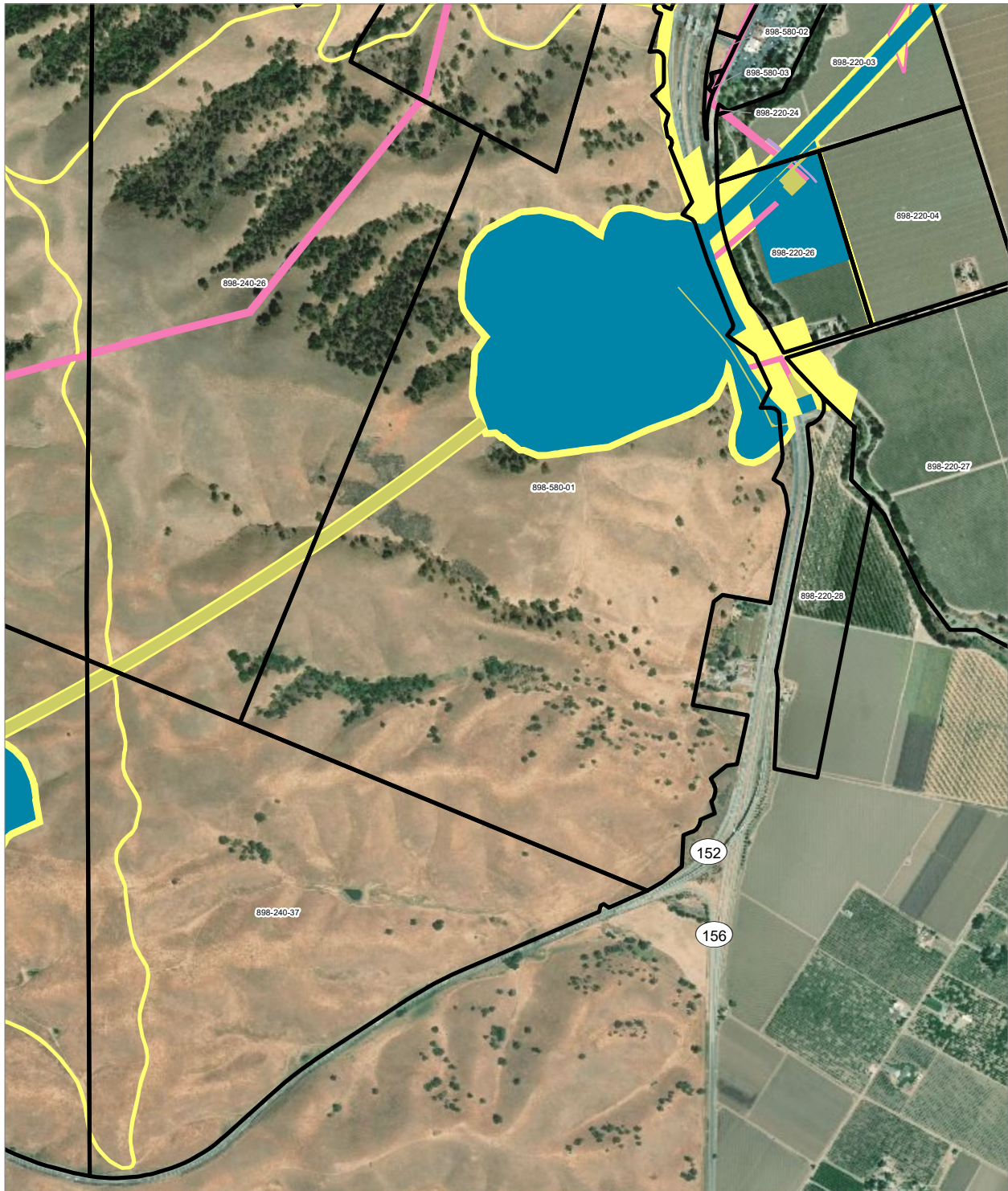
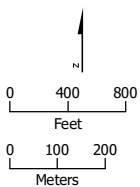



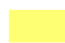





## **APPENDIX 3.1-A: PARCELS WITHIN THE HSR PROJECT FOOTPRINT (Alternative 1, Part 2)**





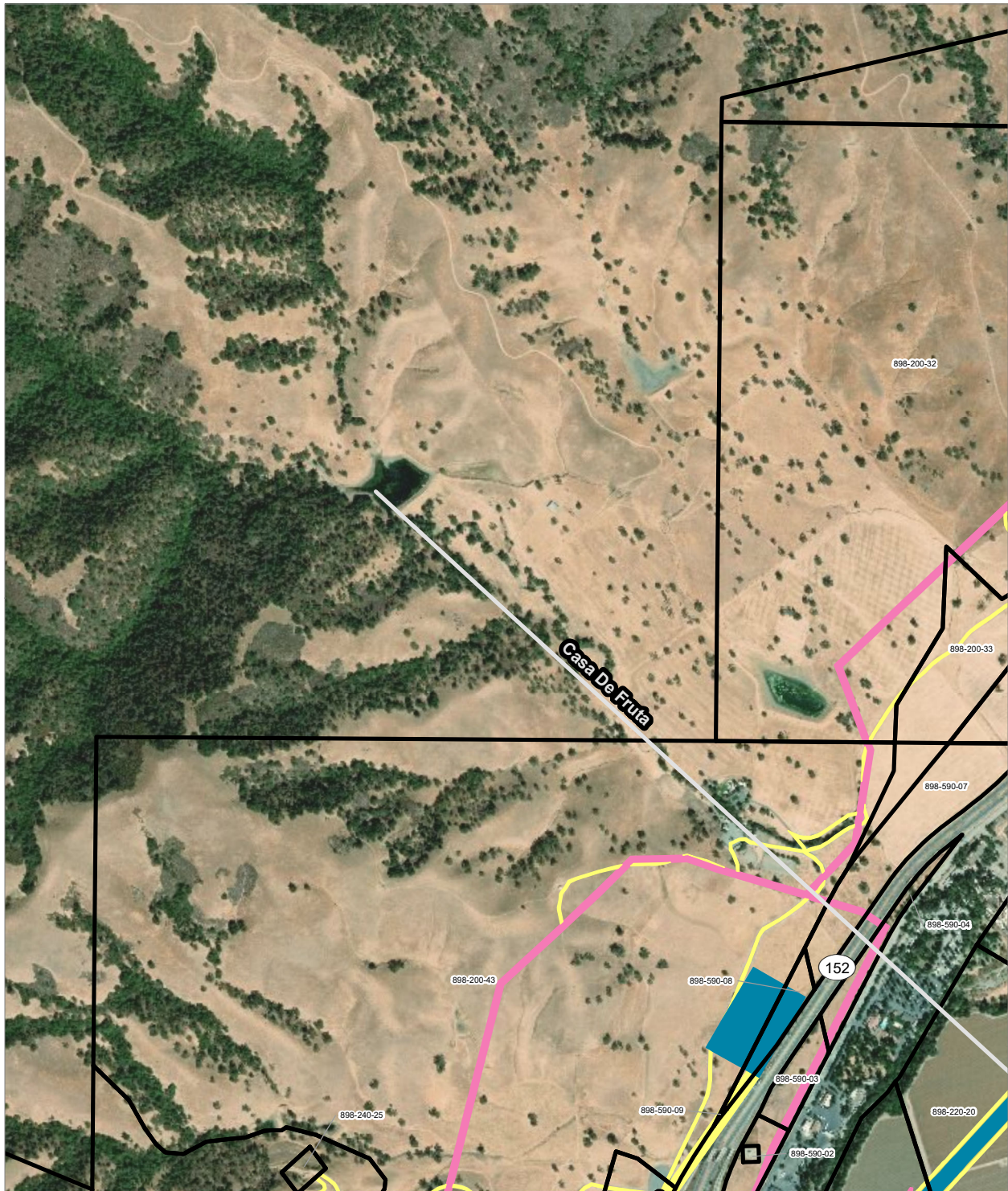
PRELIMINARY DRAFT/SUBJECT TO CHANGE - HSR ALIGNMENT IS NOT DETERMINED  
 SOURCE: ESRI, 2019; San Jose County, 2016; San Benito County, 2016; Merced Counties, 2016.



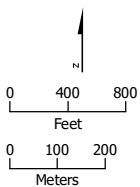
- |  |   |
|--|---|
|  HSR Right-of-Way           |  Temporary Construction Easement |
|  HSR Permanent Easement     |  Temporary Utility Easement      |
|  Permanent Utility Easement |  Non-Viable Remnant Parcel       |
|  Parcel (APN Displayed)     |   |

**Alternative 1**





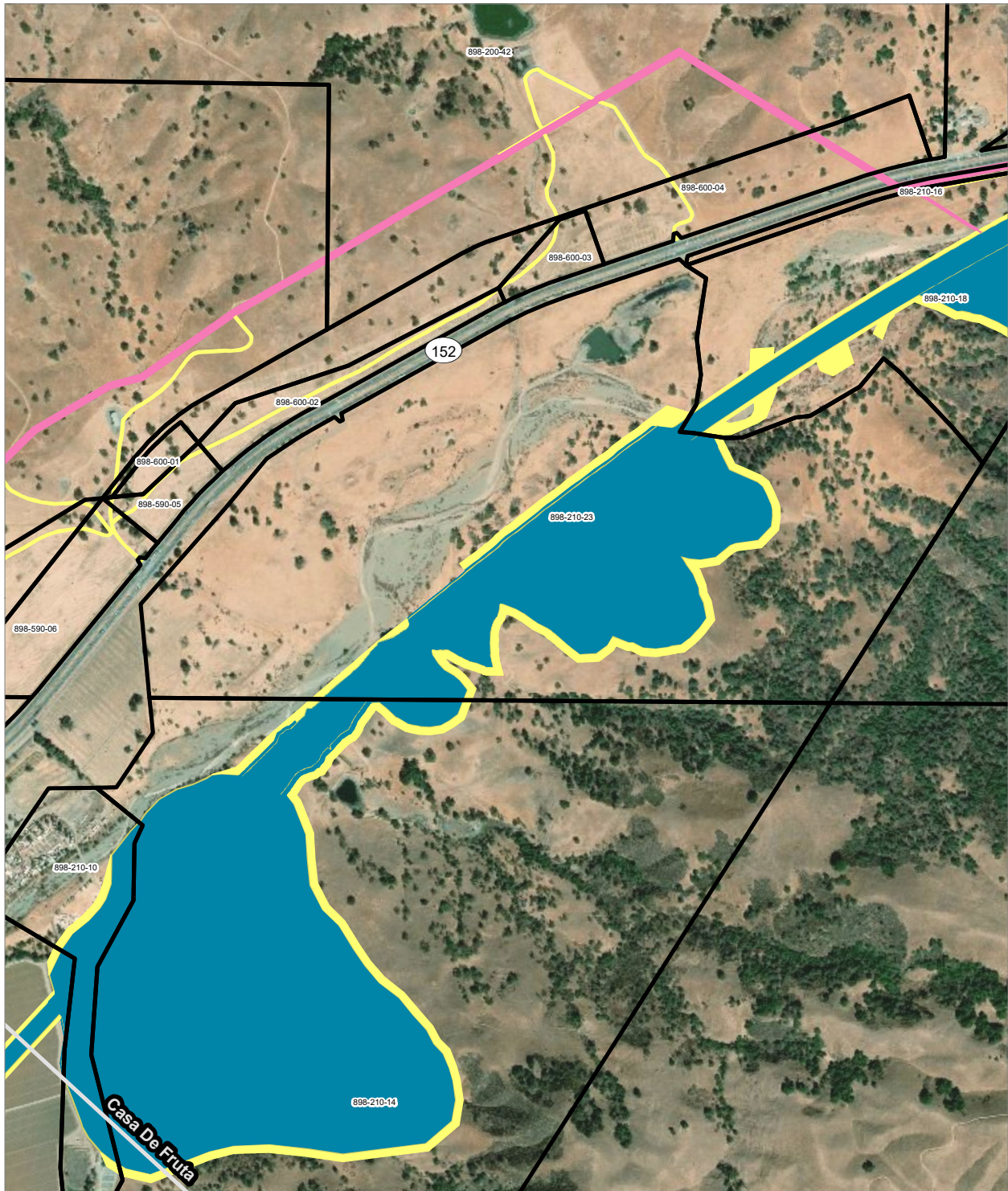
PRELIMINARY DRAFT/SUBJECT TO CHANGE - HSR ALIGNMENT IS NOT DETERMINED  
 SOURCE: ESRI, 2019; San Jose County, 2016; San Benito County, 2016; Merced Counties, 2016.



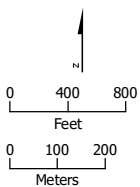
- HSR Right-of-Way
- HSR Permanent Easement
- Permanent Utility Easement
- Temporary Construction Easement
- Parcel (APN Displayed)

**Alternative 1**





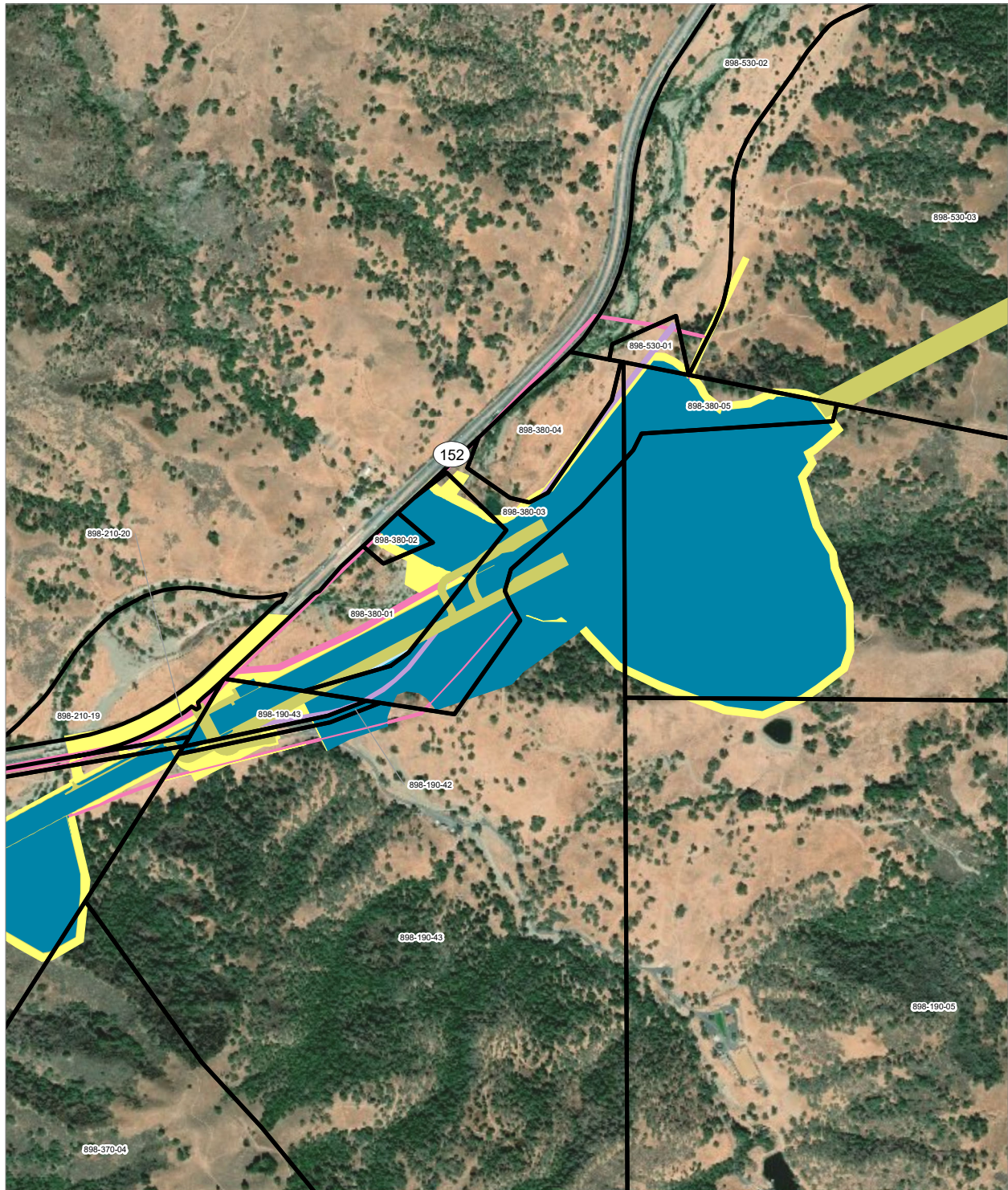
PRELIMINARY DRAFT/SUBJECT TO CHANGE - HSR ALIGNMENT IS NOT DETERMINED  
 SOURCE: ESRI, 2019; San Jose County, 2016; San Benito County, 2016; Merced Counties, 2016.



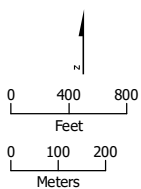
- HSR Right-of-Way
- Permanent Utility Easement
- Temporary Construction Easement
- Parcel (APN Displayed)
- HSR Permanent Easement



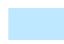




**Alternative 1**





PRELIMINARY DRAFT/SUBJECT TO CHANGE - HSR ALIGNMENT IS NOT DETERMINED  
 SOURCE: ESRI, 2019; San Jose County, 2016; San Benito County, 2016; Merced Counties, 2016.



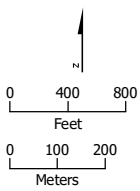
- |  |   |
|--|---|
|  HSR Right-of-Way       |  Permanent Utility Easement      |
|  Other Right-of-Way     |  Temporary Construction Easement |
|  HSR Permanent Easement |  Temporary Utility Easement      |
|  |  Parcel (APN Displayed)          |

**Alternative 1**





PRELIMINARY DRAFT/SUBJECT TO CHANGE - HSR ALIGNMENT IS NOT DETERMINED  
 SOURCE: ESRI, 2019; San Jose County, 2016; San Benito County, 2016; Merced Counties, 2016.



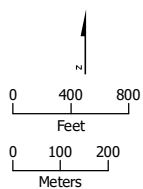
- HSR Permanent Easement
- Parcel (APN Displayed)

**Alternative 1**





PRELIMINARY DRAFT/SUBJECT TO CHANGE - HSR ALIGNMENT IS NOT DETERMINED  
 SOURCE: ESRI, 2019; San Jose County, 2016; San Benito County, 2016; Merced Counties, 2016.



- HSR Permanent Easement
- Parcel (APN Displayed)

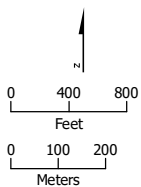
**Alternative 1**







PRELIMINARY DRAFT/SUBJECT TO CHANGE - HSR ALIGNMENT IS NOT DETERMINED  
 SOURCE: ESRI, 2019; San Jose County, 2016; San Benito County, 2016; Merced Counties, 2016.



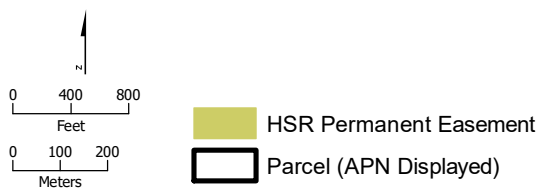
- HSR Permanent Easement
- Parcel (APN Displayed)

**Alternative 1**



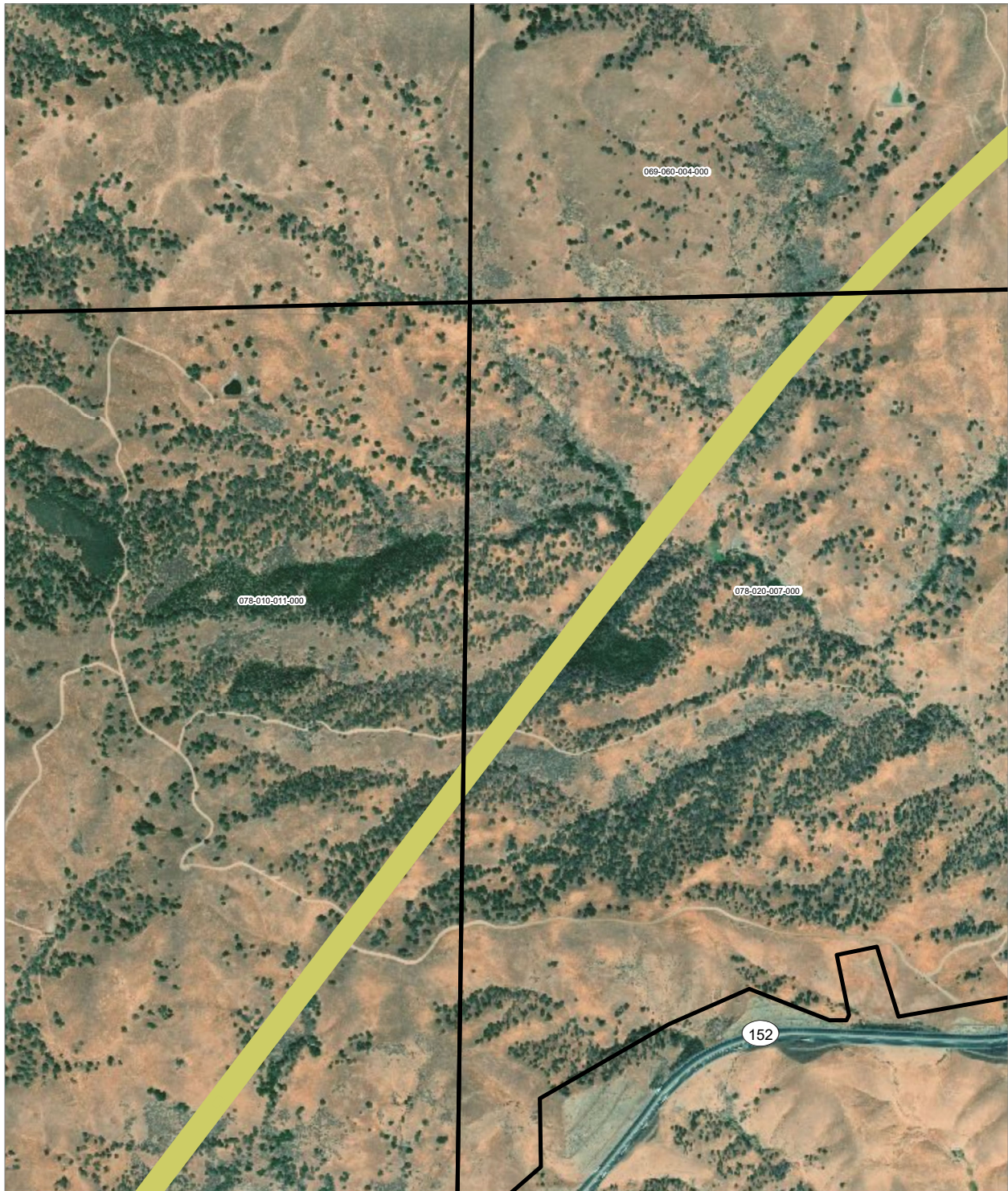


PRELIMINARY DRAFT/SUBJECT TO CHANGE - HSR ALIGNMENT IS NOT DETERMINED  
 SOURCE: ESRI, 2019; San Jose County, 2016; San Benito County, 2016; Merced Counties, 2016.

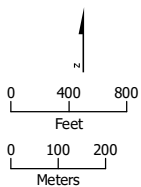


**Alternative 1**





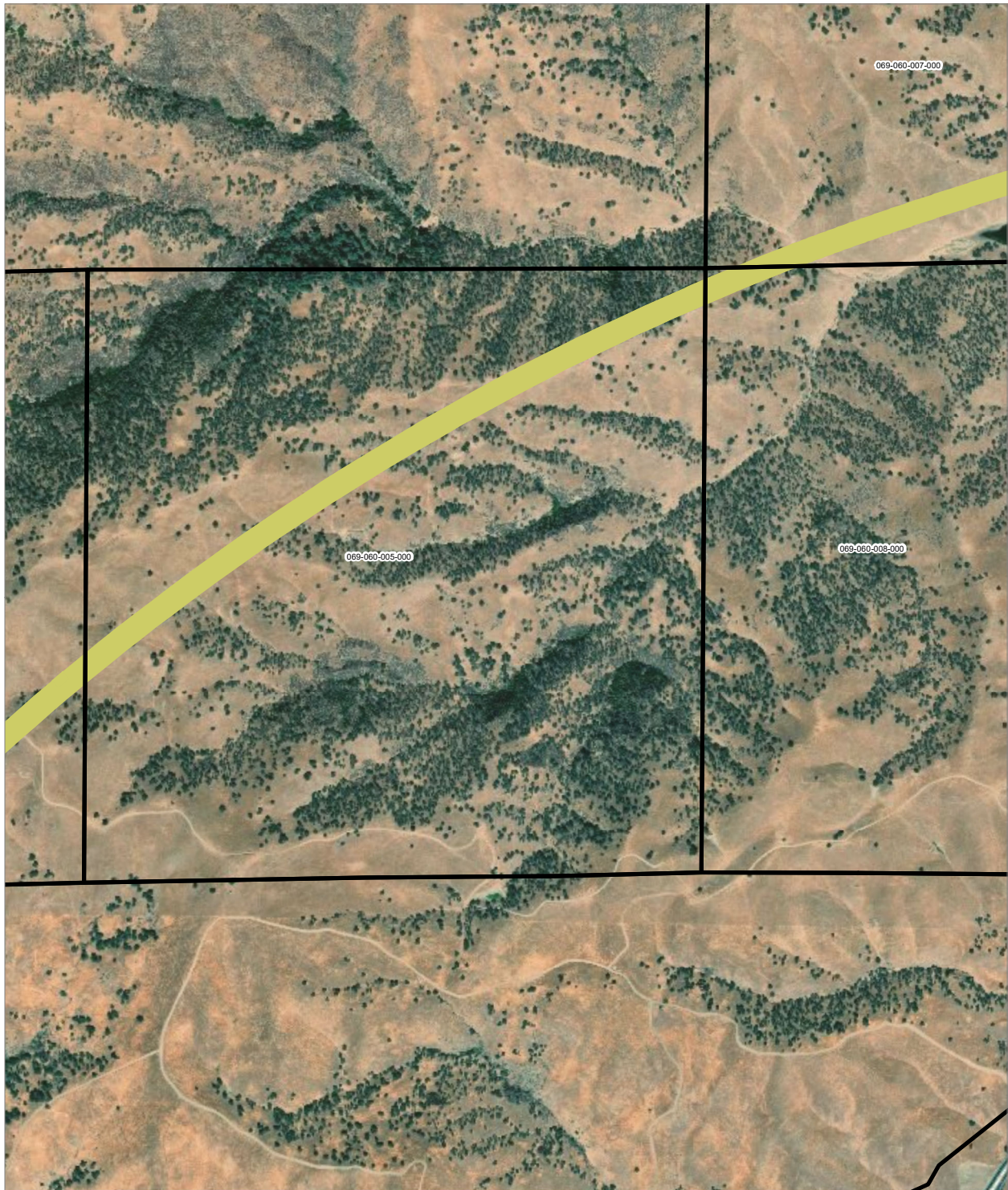
PRELIMINARY DRAFT/SUBJECT TO CHANGE - HSR ALIGNMENT IS NOT DETERMINED  
 SOURCE: ESRI, 2019; San Jose County, 2016; San Benito County, 2016; Merced Counties, 2016.



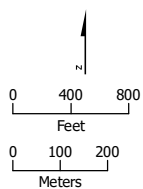
- HSR Permanent Easement
- Parcel (APN Displayed)

**Alternative 1**





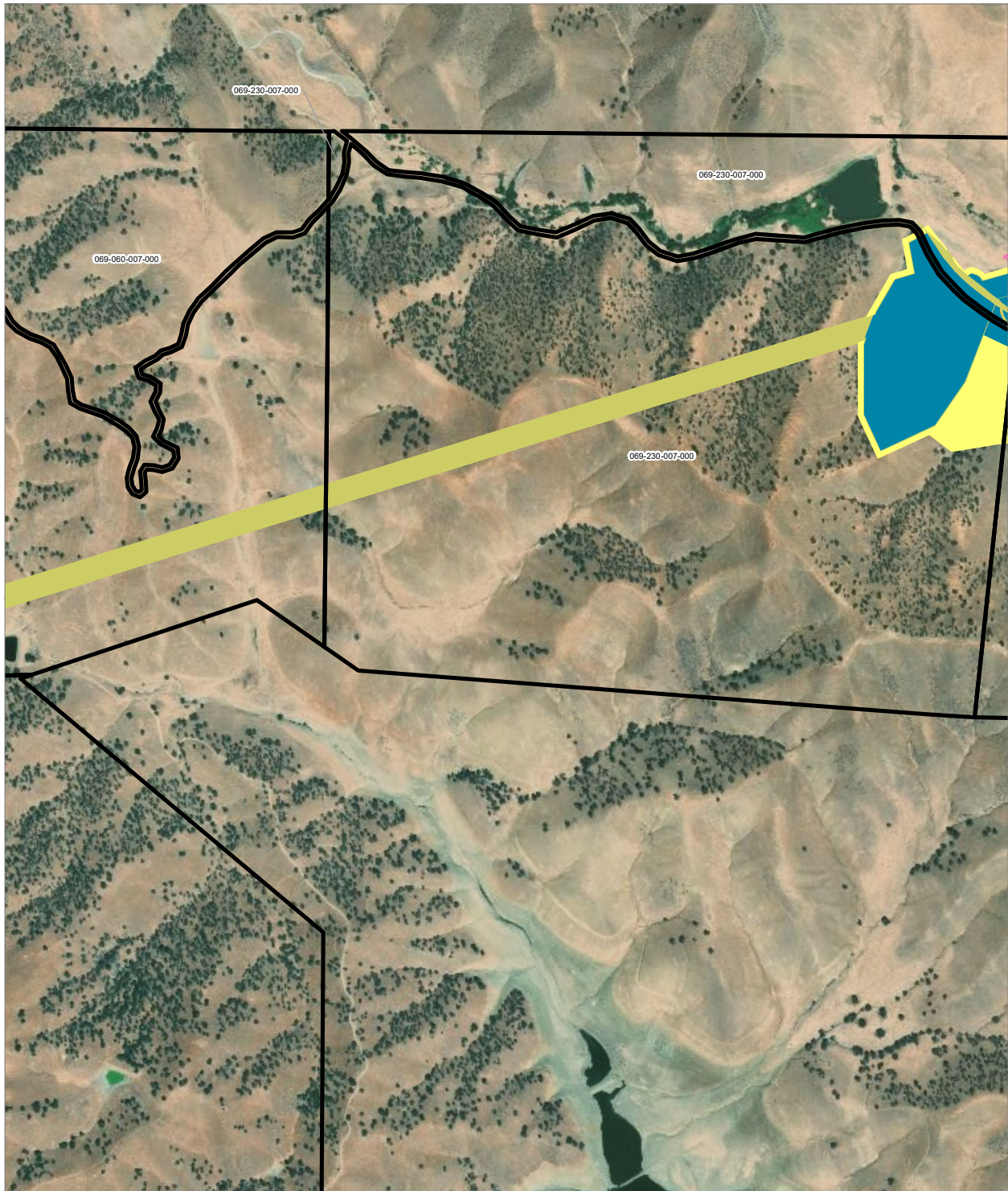
PRELIMINARY DRAFT/SUBJECT TO CHANGE - HSR ALIGNMENT IS NOT DETERMINED  
 SOURCE: ESRI, 2019; San Jose County, 2016; San Benito County, 2016; Merced Counties, 2016.



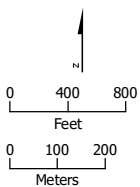
- HSR Permanent Easement
- Parcel (APN Displayed)

**Alternative 1**





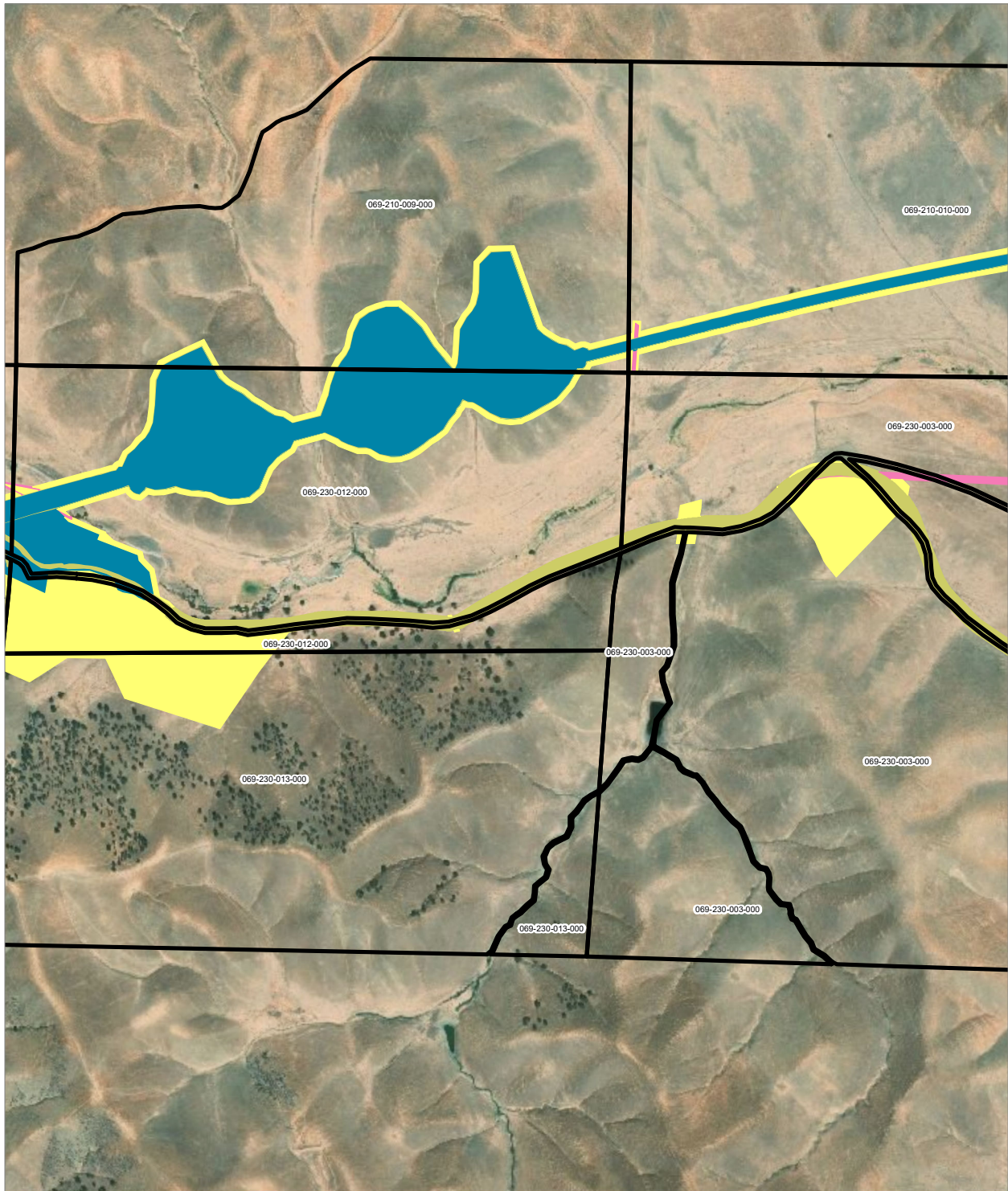
PRELIMINARY DRAFT/SUBJECT TO CHANGE - HSR ALIGNMENT IS NOT DETERMINED  
 SOURCE: ESRI, 2019; San Jose County, 2016; San Benito County, 2016; Merced Counties, 2016.



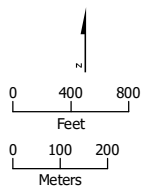
- HSR Right-of-Way
- HSR Permanent Easement
- Permanent Utility Easement
- Temporary Construction Easement
- Parcel (APN Displayed)

**Alternative 1**





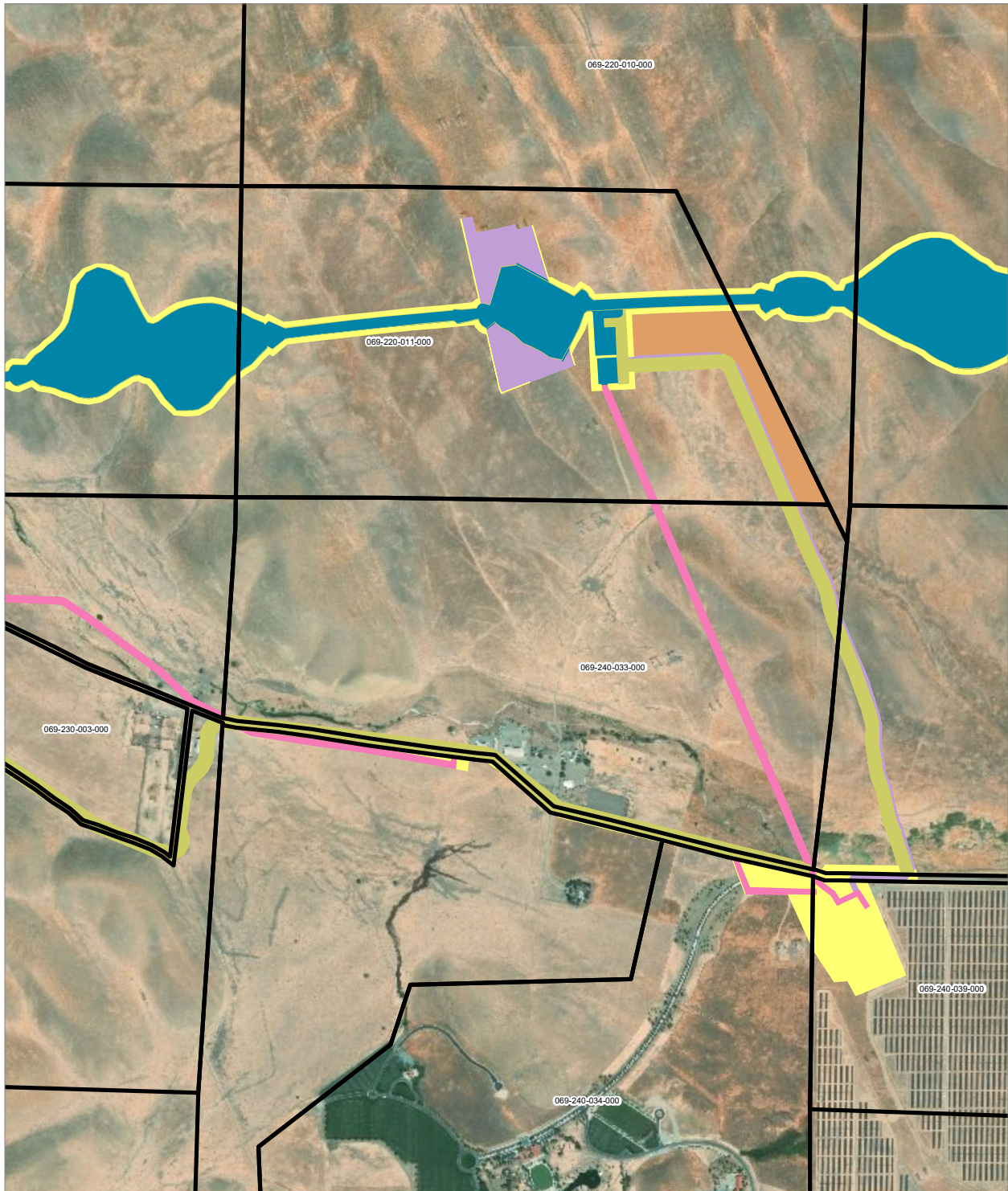
PRELIMINARY DRAFT/SUBJECT TO CHANGE - HSR ALIGNMENT IS NOT DETERMINED  
 SOURCE: ESRI, 2019; San Jose County, 2016; San Benito County, 2016; Merced Counties, 2016.



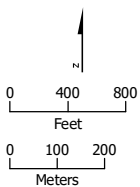
- HSR Right-of-Way
- HSR Permanent Easement
- Permanent Utility Easement
- Temporary Construction Easement
- Parcel (APN Displayed)

**Alternative 1**





PRELIMINARY DRAFT/SUBJECT TO CHANGE - HSR ALIGNMENT IS NOT DETERMINED  
 SOURCE: ESRI, 2019; San Jose County, 2016; San Benito County, 2016; Merced Counties, 2016.



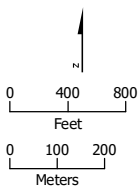
- HSR Right-of-Way
- Temporary Construction Easement
- HSR Permanent Easement
- Temporary Utility Easement
- Permanent Utility Easement
- Non-Viable Remnant Parcel
- Parcel (APN Displayed)

**Alternative 1**





PRELIMINARY DRAFT/SUBJECT TO CHANGE - HSR ALIGNMENT IS NOT DETERMINED  
 SOURCE: ESRI, 2019; San Jose County, 2016; San Benito County, 2016; Merced Counties, 2016.

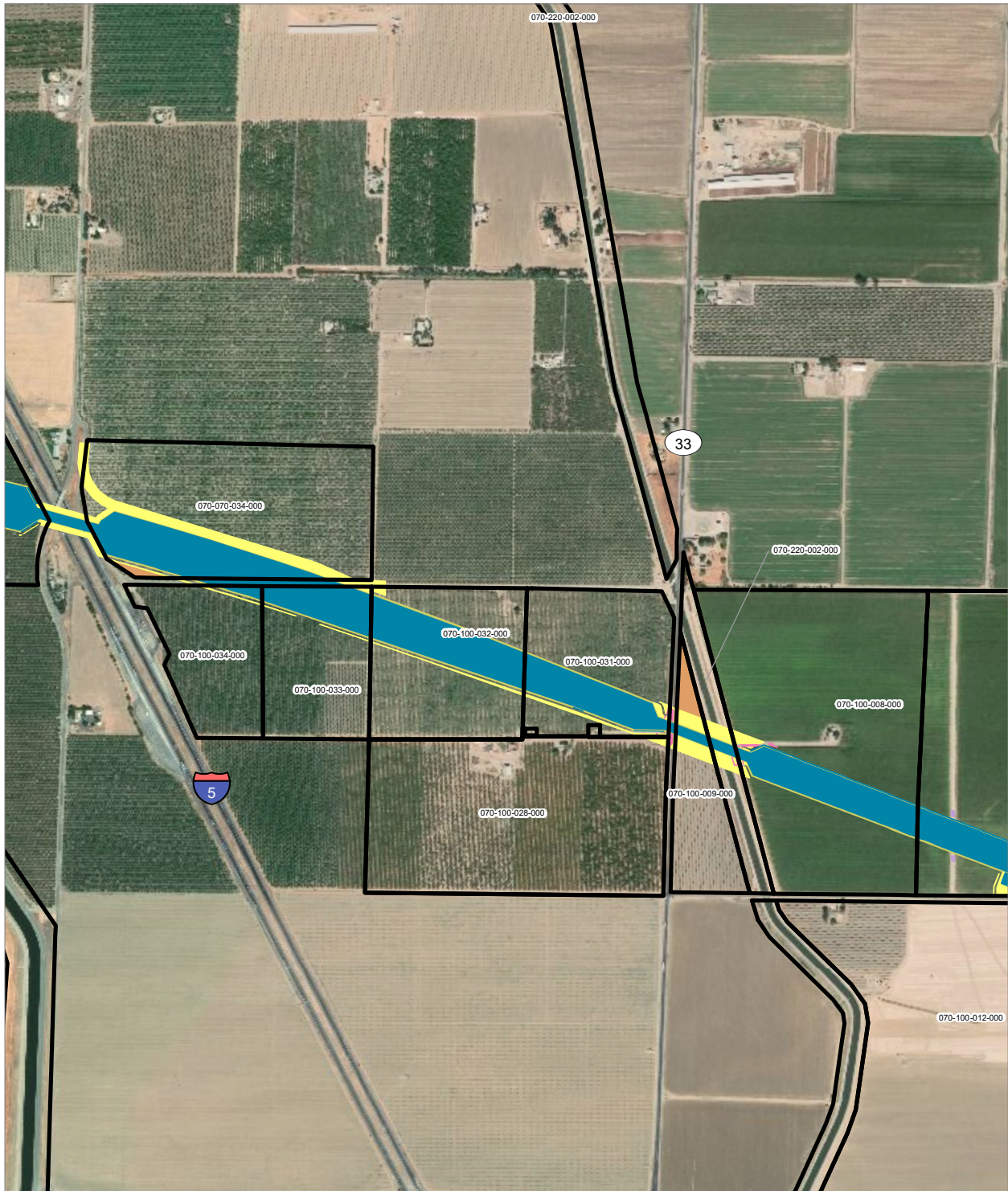


- HSR Right-of-Way
- Temporary Construction Easement
- HSR Permanent Easement
- Temporary Utility Easement
- Permanent Utility Easement
- Non-Viable Remnant Parcel
- Parcel (APN Displayed)

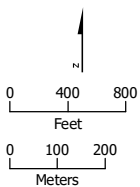
**Alternative 1**


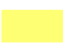











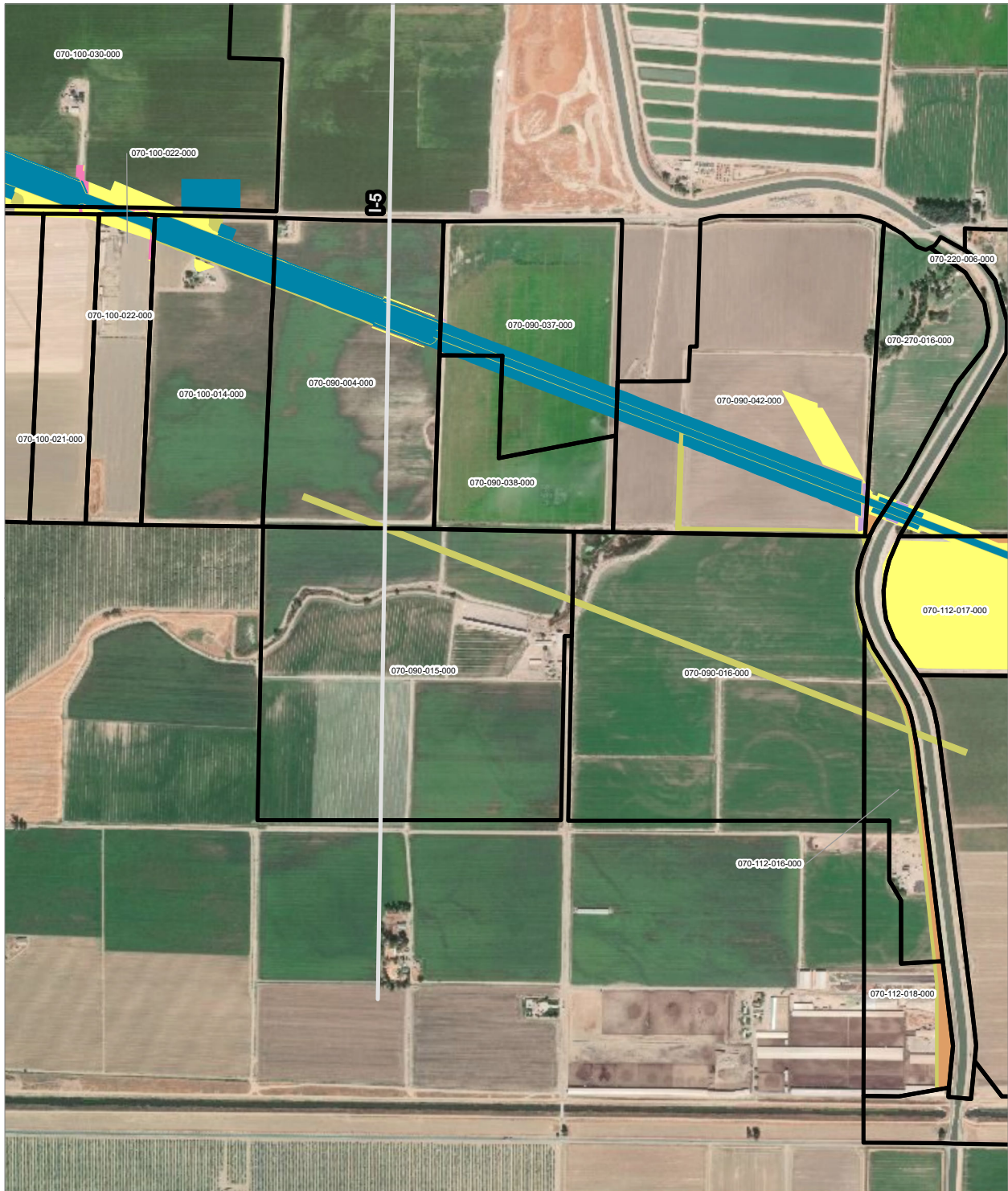
PRELIMINARY DRAFT/SUBJECT TO CHANGE - HSR ALIGNMENT IS NOT DETERMINED  
 SOURCE: ESRI, 2019; San Jose County, 2016; San Benito County, 2016; Merced Counties, 2016.



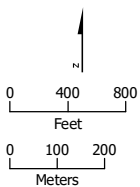
- |  |   |
|--|---|
|  HSR Right-of-Way           |  Temporary Construction Easement |
|  HSR Permanent Easement     |  Temporary Utility Easement      |
|  Permanent Utility Easement |  Non-Viable Remnant Parcel       |
|  |  Parcel (APN Displayed)          |

**Alternative 1**





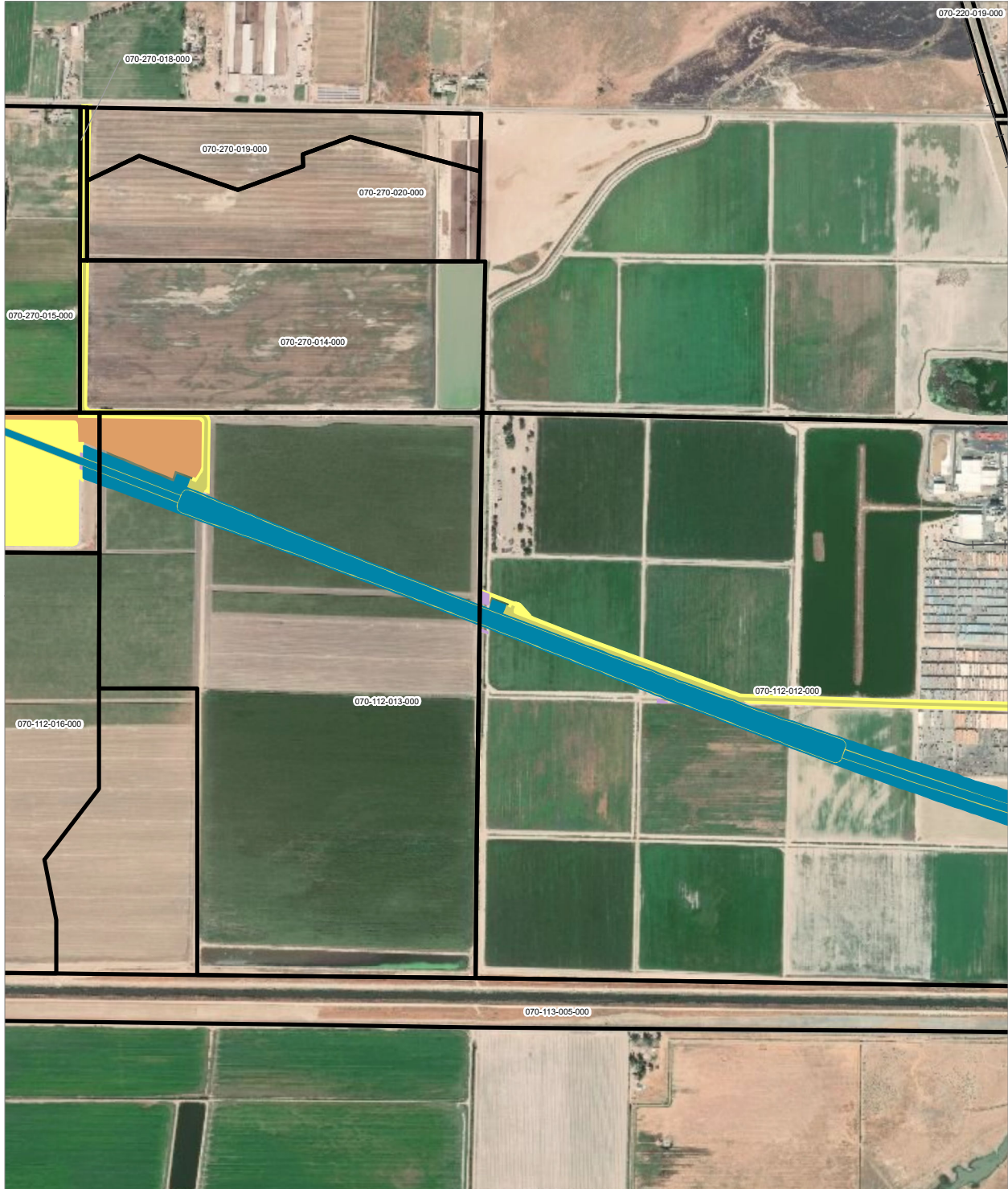
PRELIMINARY DRAFT/SUBJECT TO CHANGE - HSR ALIGNMENT IS NOT DETERMINED  
 SOURCE: ESRI, 2019; San Jose County, 2016; San Benito County, 2016; Merced Counties, 2016.



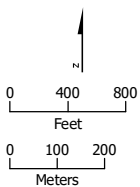
- HSR Right-of-Way
- HSR Permanent Easement
- Permanent Utility Easement
- Temporary Construction Easement
- Temporary Utility Easement
- Non-Viable Remnant Parcel
- Parcel (APN Displayed)

**Alternative 1**





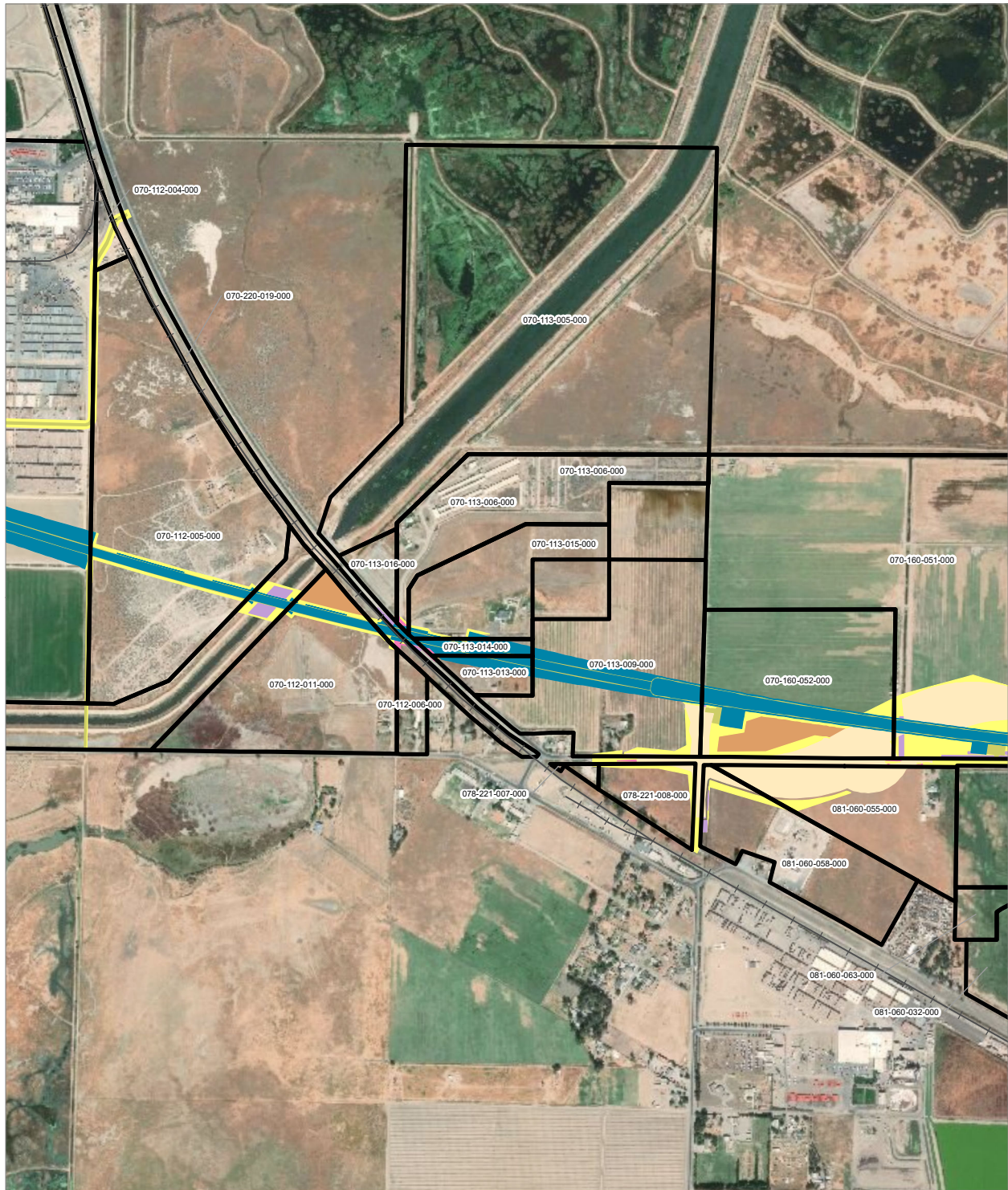
PRELIMINARY DRAFT/SUBJECT TO CHANGE - HSR ALIGNMENT IS NOT DETERMINED  
 SOURCE: ESRI, 2019; San Jose County, 2016; San Benito County, 2016; Merced Counties, 2016.



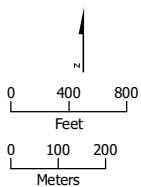
- HSR Right-of-Way
- HSR Permanent Easement
- Temporary Construction Easement
- Temporary Utility Easement
- Non-Viable Remnant Parcel
- Parcel (APN Displayed)


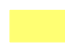






**Alternative 1**





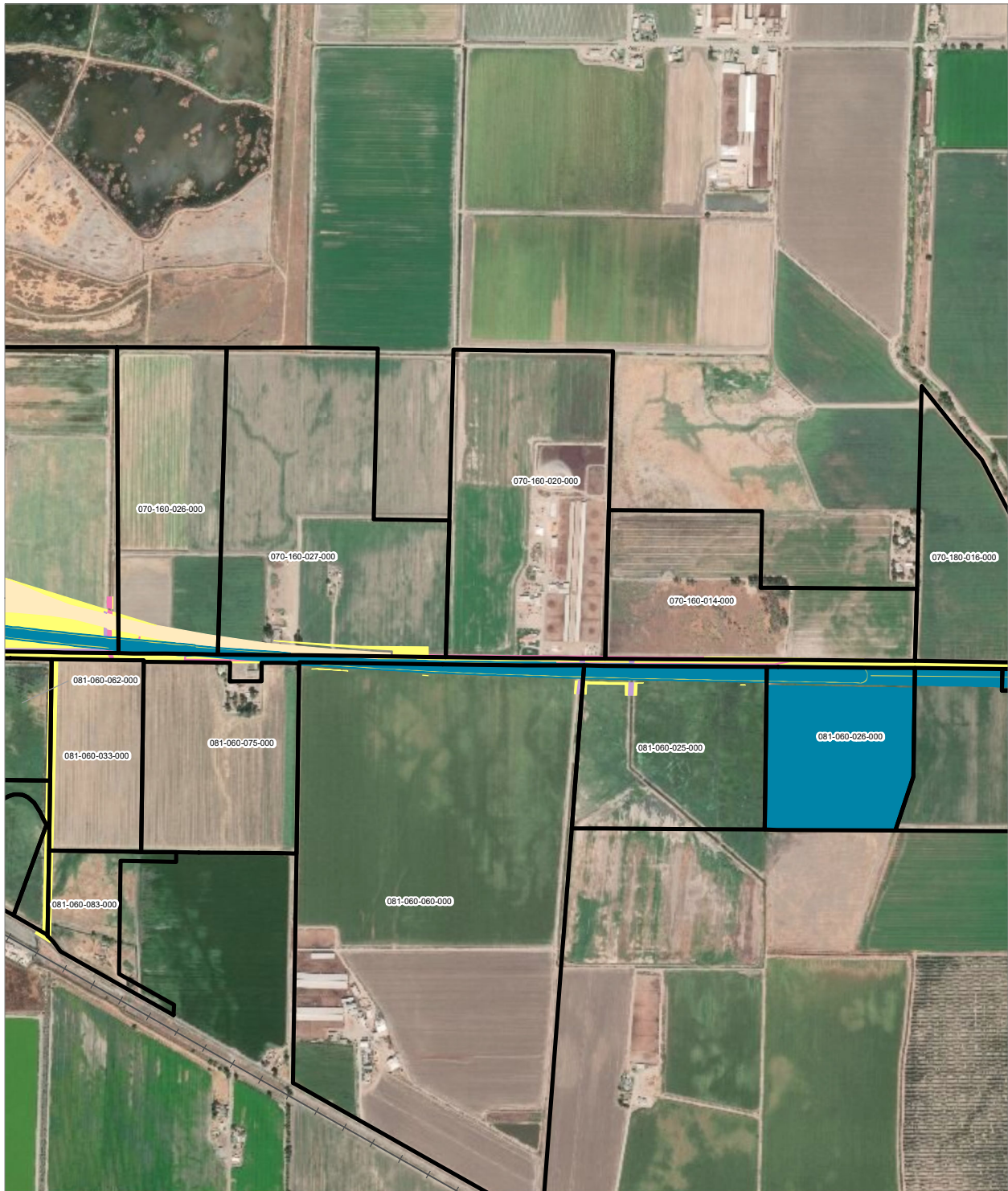
PRELIMINARY DRAFT/SUBJECT TO CHANGE - HSR ALIGNMENT IS NOT DETERMINED  
 SOURCE: ESRI, 2019; San Jose County, 2016; San Benito County, 2016; Merced Counties, 2016.



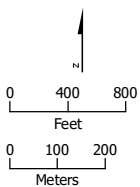
- |  |   |
|--|---|
|  HSR Right-of-Way           |  Temporary Construction Easement |
|  Roadway Right-of-Way       |  Temporary Utility Easement      |
|  HSR Permanent Easement     |  Non-Viable Remnant Parcel       |
|  Permanent Utility Easement |  Parcel (APN Displayed)          |

**Alternative 1**





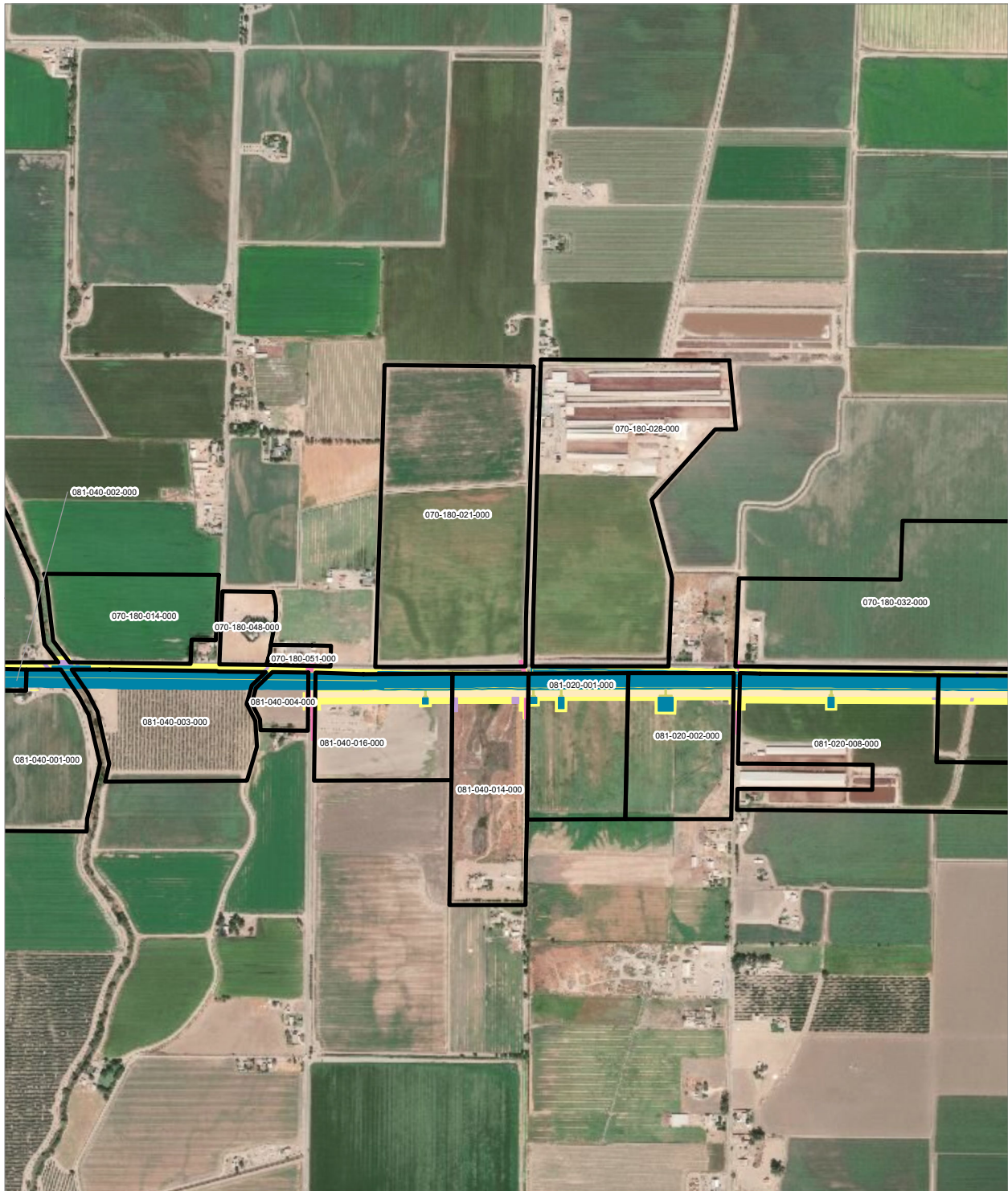
PRELIMINARY DRAFT/SUBJECT TO CHANGE - HSR ALIGNMENT IS NOT DETERMINED  
 SOURCE: ESRI, 2019; San Jose County, 2016; San Benito County, 2016; Merced Counties, 2016.



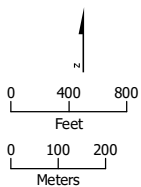
- HSR Right-of-Way
- Temporary Construction Easement
- Roadway Right-of-Way
- Temporary Utility Easement
- HSR Permanent Easement
- Non-Viable Remnant Parcel
- Permanent Utility Easement
- Parcel (APN Displayed)

**Alternative 1**



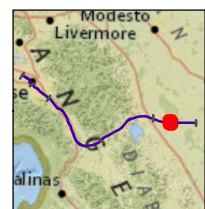


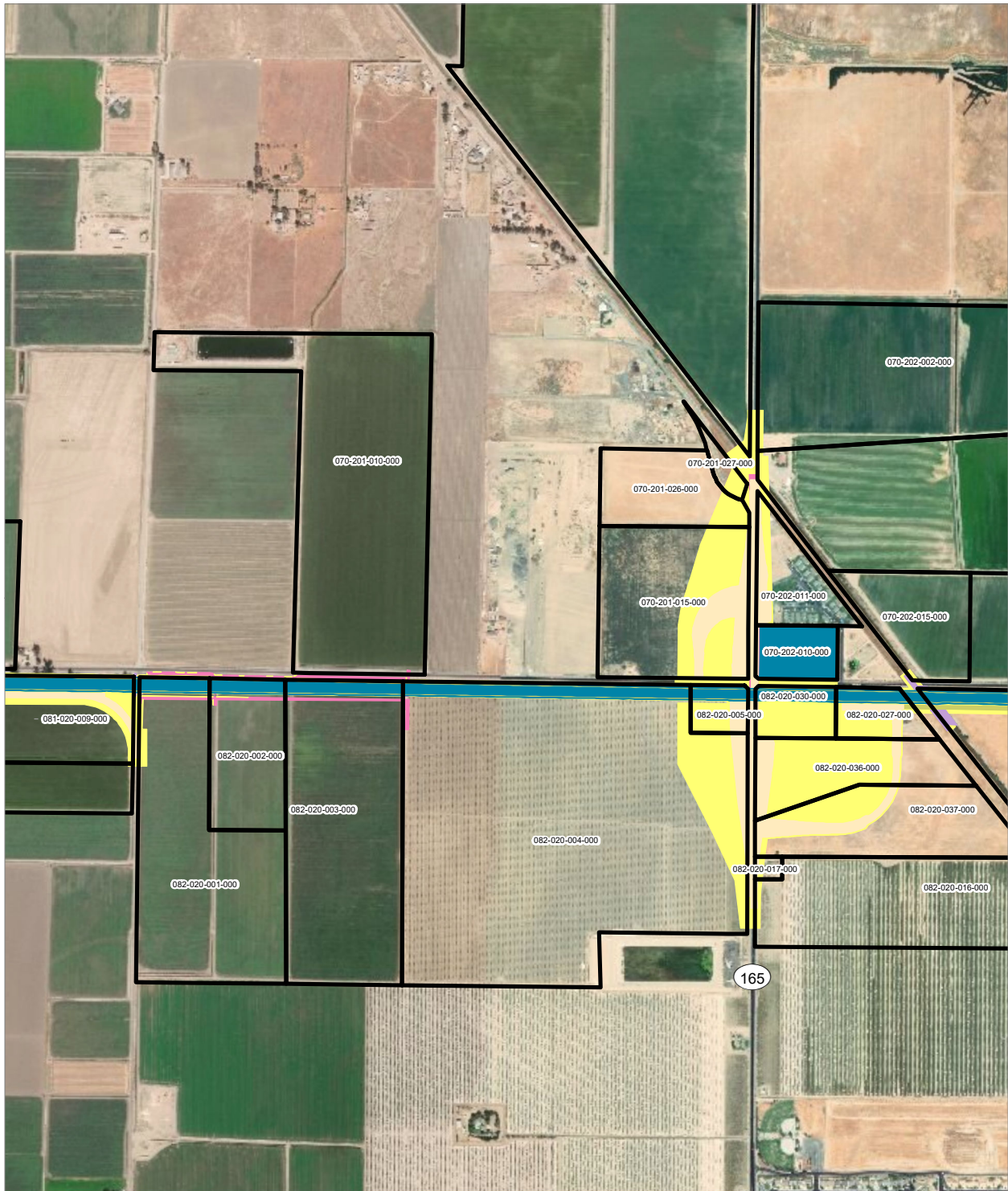
PRELIMINARY DRAFT/SUBJECT TO CHANGE - HSR ALIGNMENT IS NOT DETERMINED  
 SOURCE: ESRI, 2019; San Jose County, 2016; San Benito County, 2016; Merced Counties, 2016.



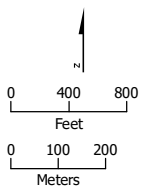
- HSR Right-of-Way
- Roadway Right-of-Way
- HSR Permanent Easement
- Permanent Utility Easement
- Temporary Construction Easement
- Temporary Utility Easement
- Non-Viable Remnant Parcel
- Parcel (APN Displayed)


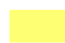






**Alternative 1**





PRELIMINARY DRAFT/SUBJECT TO CHANGE - HSR ALIGNMENT IS NOT DETERMINED  
 SOURCE: ESRI, 2019; San Jose County, 2016; San Benito County, 2016; Merced Counties, 2016.



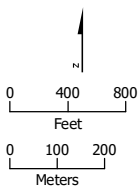
- |  |   |
|--|---|
|  HSR Right-of-Way           |  Temporary Construction Easement |
|  Roadway Right-of-Way       |  Temporary Utility Easement      |
|  HSR Permanent Easement     |  Non-Viable Remnant Parcel       |
|  Permanent Utility Easement |  Parcel (APN Displayed)          |

**Alternative 1**





PRELIMINARY DRAFT/SUBJECT TO CHANGE - HSR ALIGNMENT IS NOT DETERMINED  
 SOURCE: ESRI, 2019; San Jose County, 2016; San Benito County, 2016; Merced Counties, 2016.

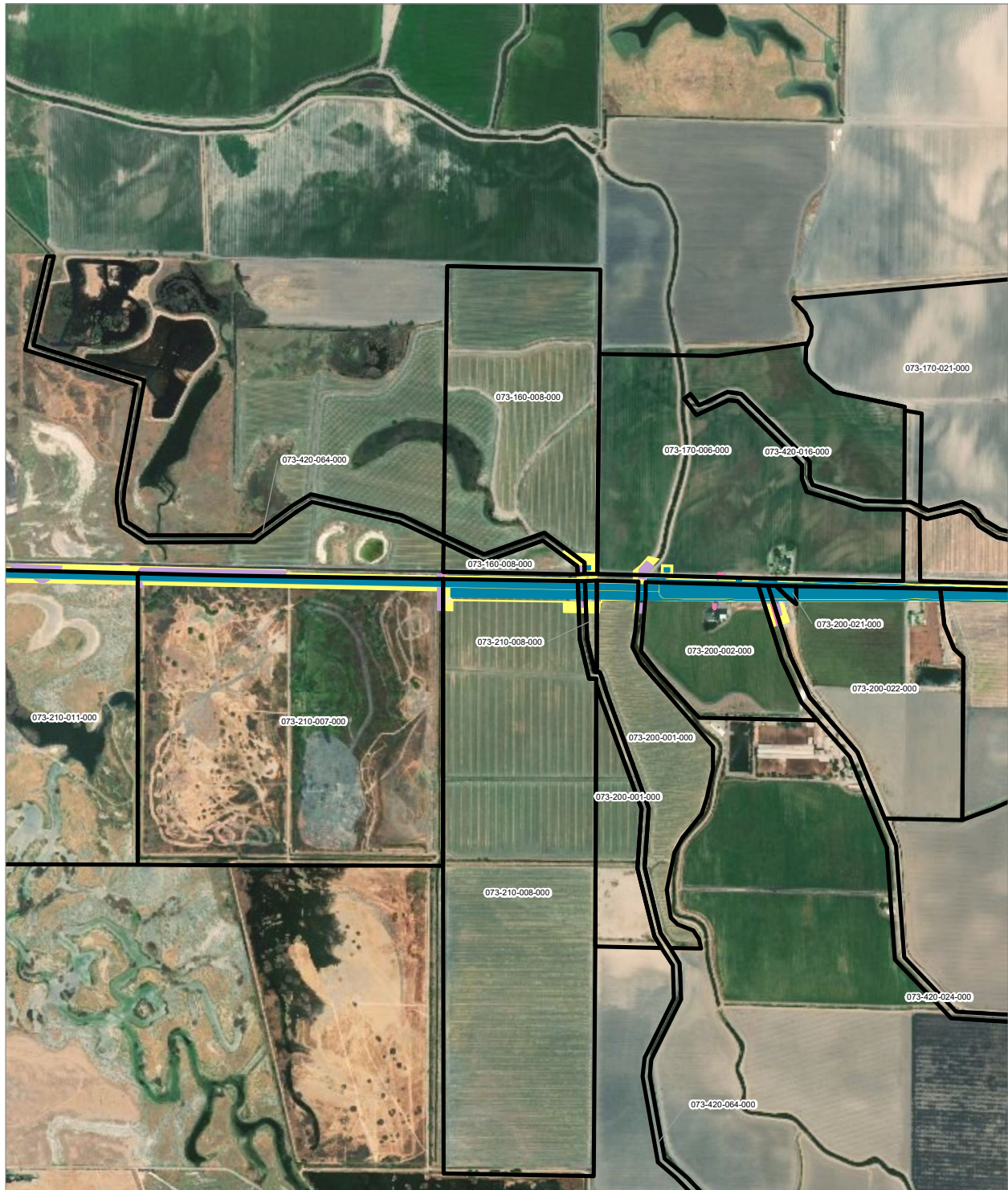


- HSR Right-of-Way
- HSR Permanent Easement
- Permanent Utility Easement
- Temporary Construction Easement
- Temporary Utility Easement
- Non-Viable Remnant Parcel
- Parcel (APN Displayed)

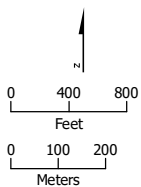
**Alternative 1**


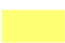












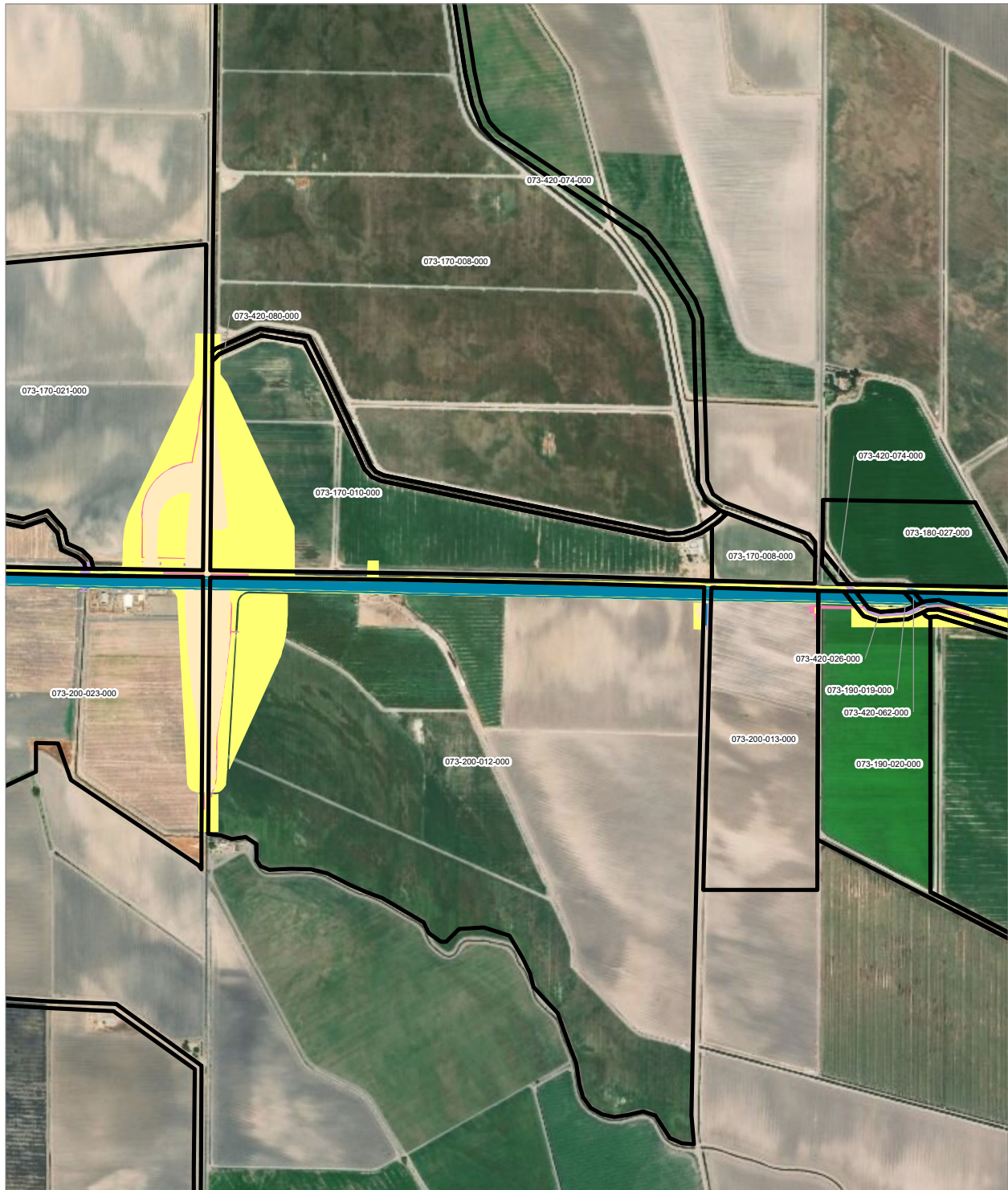
PRELIMINARY DRAFT/SUBJECT TO CHANGE - HSR ALIGNMENT IS NOT DETERMINED  
 SOURCE: ESRI, 2019; San Jose County, 2016; San Benito County, 2016; Merced Counties, 2016.



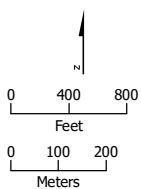
- |  |   |
|--|---|
|  HSR Right-of-Way           |  Temporary Construction Easement |
|  Roadway Right-of-Way       |  Temporary Utility Easement      |
|  HSR Permanent Easement     |  Non-Viable Remnant Parcel       |
|  Permanent Utility Easement |  Parcel (APN Displayed)          |


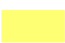






**Alternative 1**





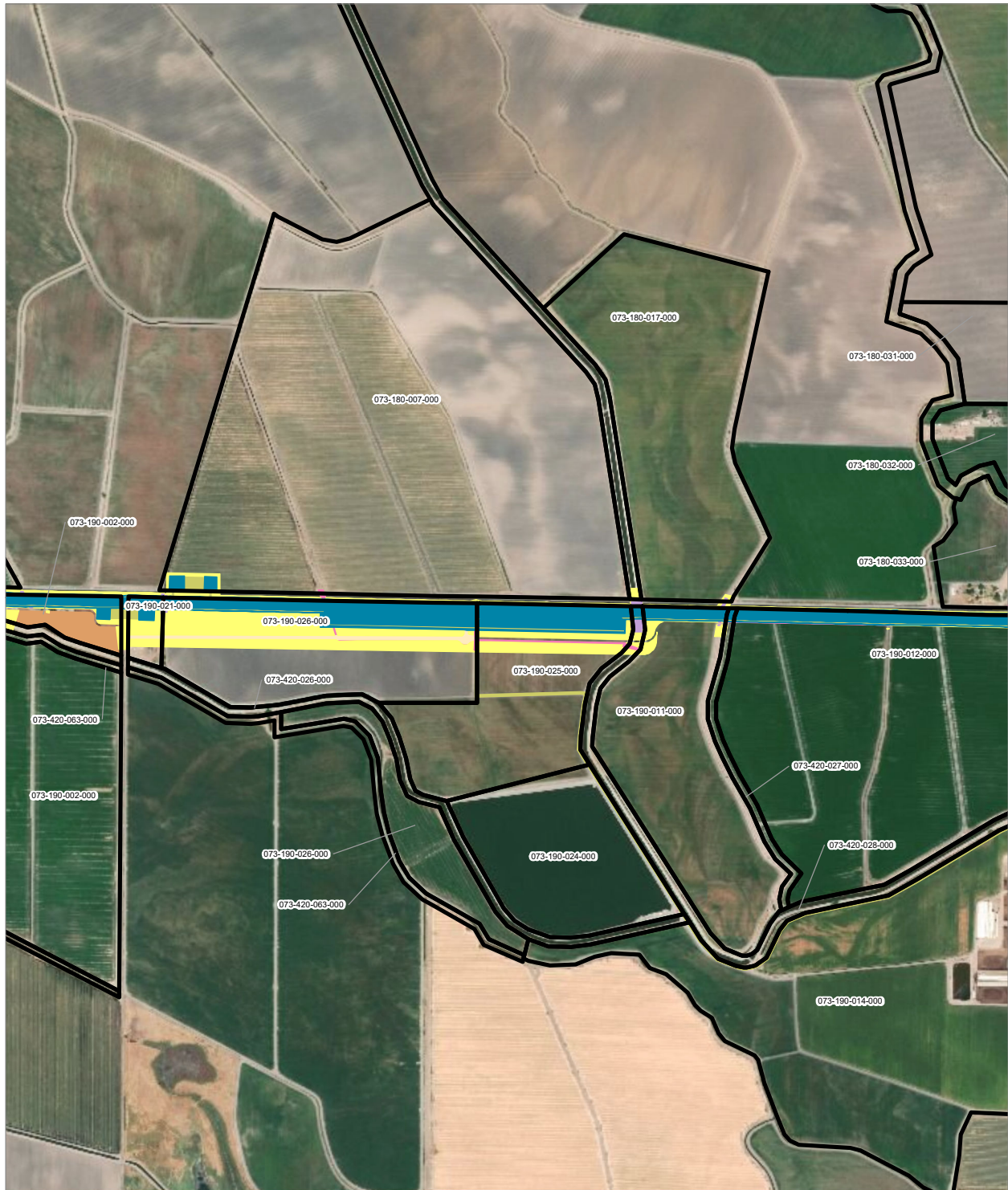
PRELIMINARY DRAFT/SUBJECT TO CHANGE - HSR ALIGNMENT IS NOT DETERMINED  
 SOURCE: ESRI, 2019; San Jose County, 2016; San Benito County, 2016; Merced Counties, 2016.



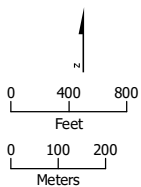
- |  |   |
|--|---|
|  HSR Right-of-Way           |  Temporary Construction Easement |
|  Roadway Right-of-Way       |  Temporary Utility Easement      |
|  HSR Permanent Easement     |  Non-Viable Remnant Parcel       |
|  Permanent Utility Easement |  Parcel (APN Displayed)          |









**Alternative 1**





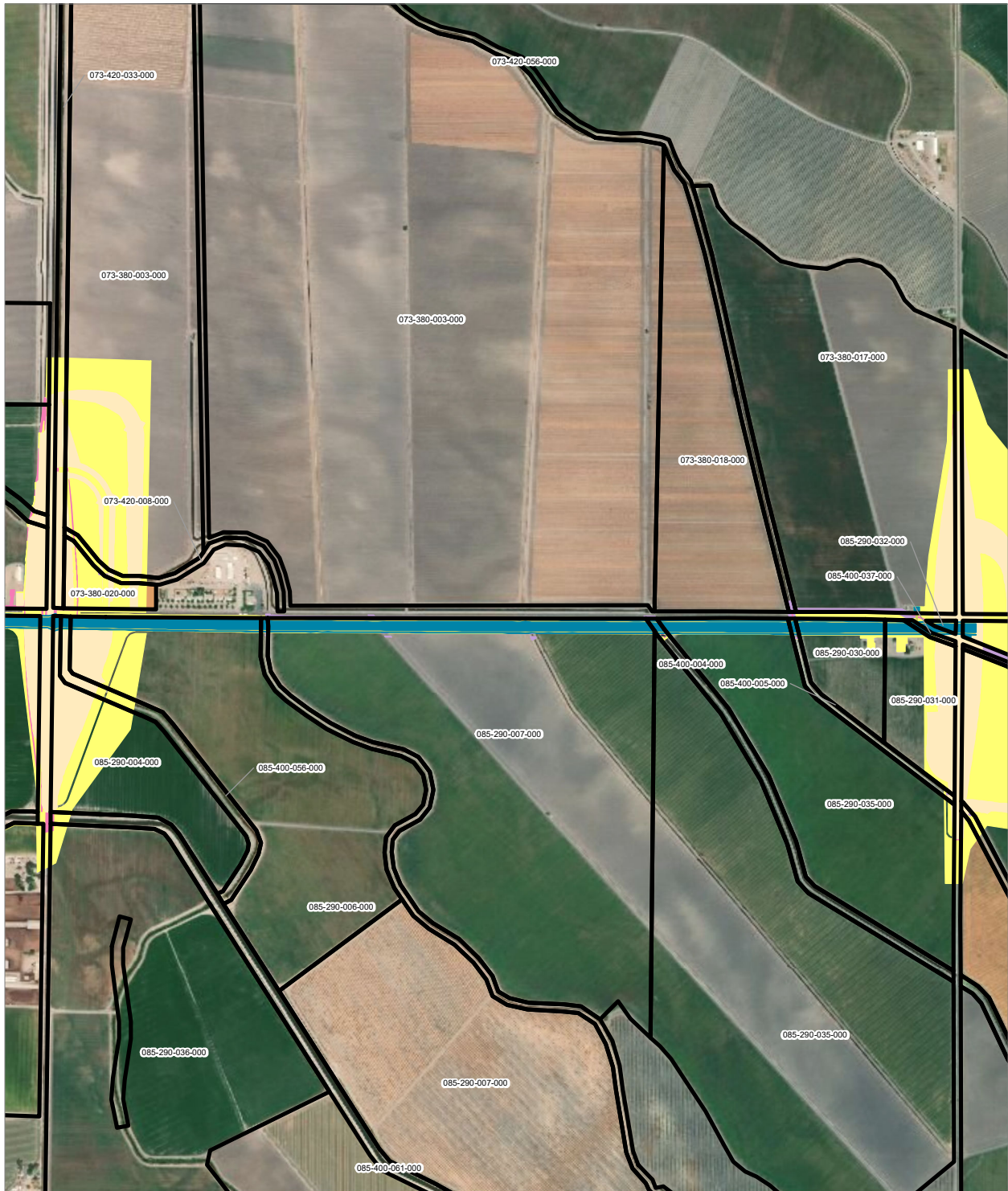
PRELIMINARY DRAFT/SUBJECT TO CHANGE - HSR ALIGNMENT IS NOT DETERMINED  
 SOURCE: ESRI, 2019; San Jose County, 2016; San Benito County, 2016; Merced Counties, 2016.



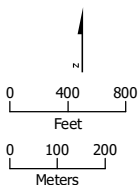
- |  |   |
|--|---|
|  HSR Right-of-Way           |  Temporary Construction Easement |
|  Roadway Right-of-Way       |  Temporary Utility Easement      |
|  HSR Permanent Easement     |  Non-Viable Remnant Parcel       |
|  Permanent Utility Easement |  Parcel (APN Displayed)          |

**Alternative 1**





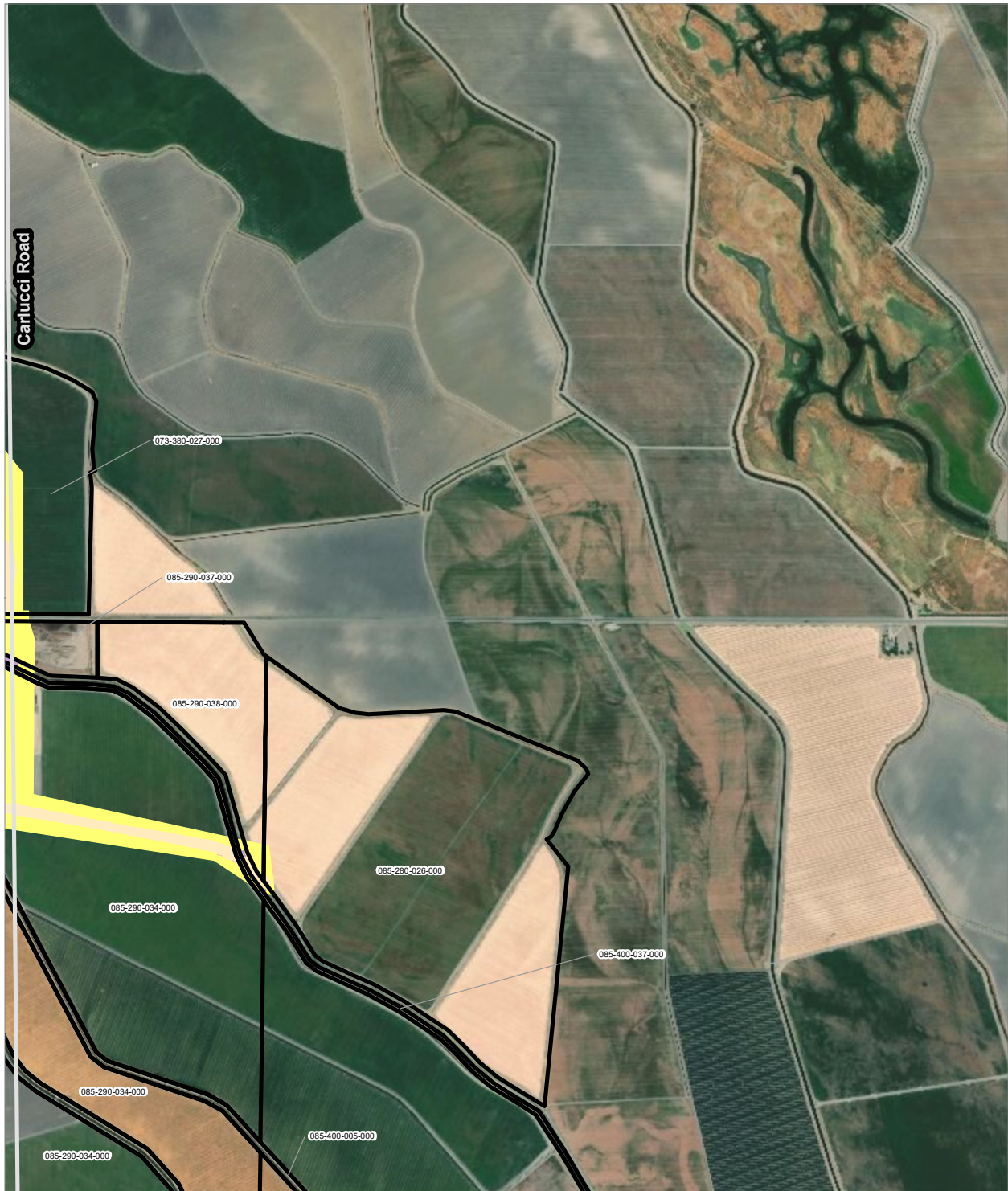
PRELIMINARY DRAFT/SUBJECT TO CHANGE - HSR ALIGNMENT IS NOT DETERMINED  
 SOURCE: ESRI, 2019; San Jose County, 2016; San Benito County, 2016; Merced Counties, 2016.



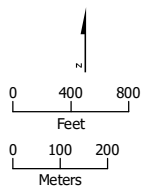
- |                            |                                 |
|----------------------------|---------------------------------|
| HSR Right-of-Way           | Temporary Construction Easement |
| Roadway Right-of-Way       | Temporary Utility Easement      |
| HSR Permanent Easement     | Non-Viable Remnant Parcel       |
| Permanent Utility Easement | Parcel (APN Displayed)          |

**Alternative 1**





PRELIMINARY DRAFT/SUBJECT TO CHANGE - HSR ALIGNMENT IS NOT DETERMINED  
 SOURCE: ESRI, 2019; San Jose County, 2016; San Benito County, 2016; Merced Counties, 2016.



- Roadway Right-of-Way
- Permanent Utility Easement
- Temporary Construction Easement
- Temporary Utility Easement
- Parcel (APN Displayed)

**Alternative 1**

