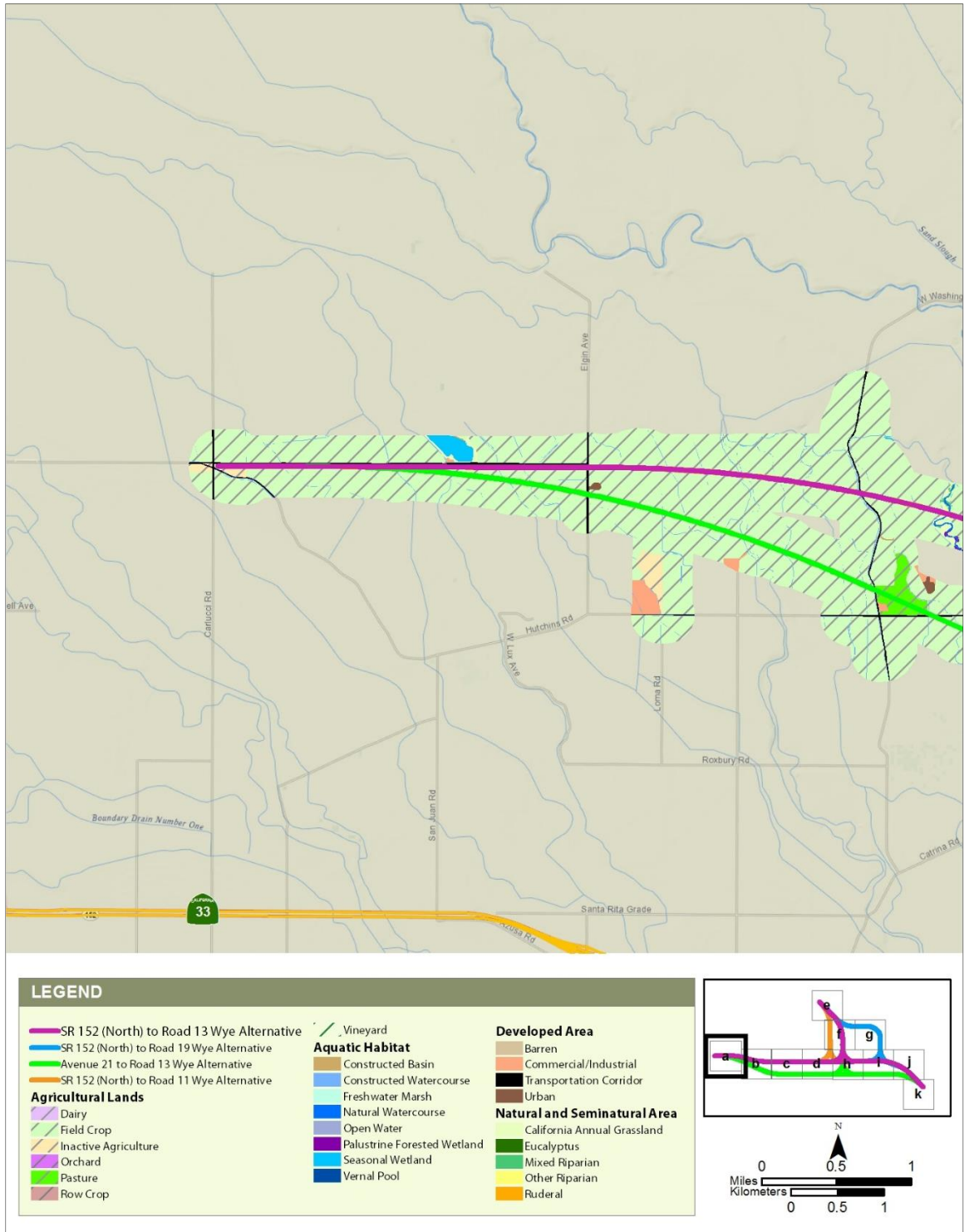


## **APPENDIX H: PLANT COMMUNITIES AND LAND COVER TYPES WITHIN THE HABITAT STUDY AREA**

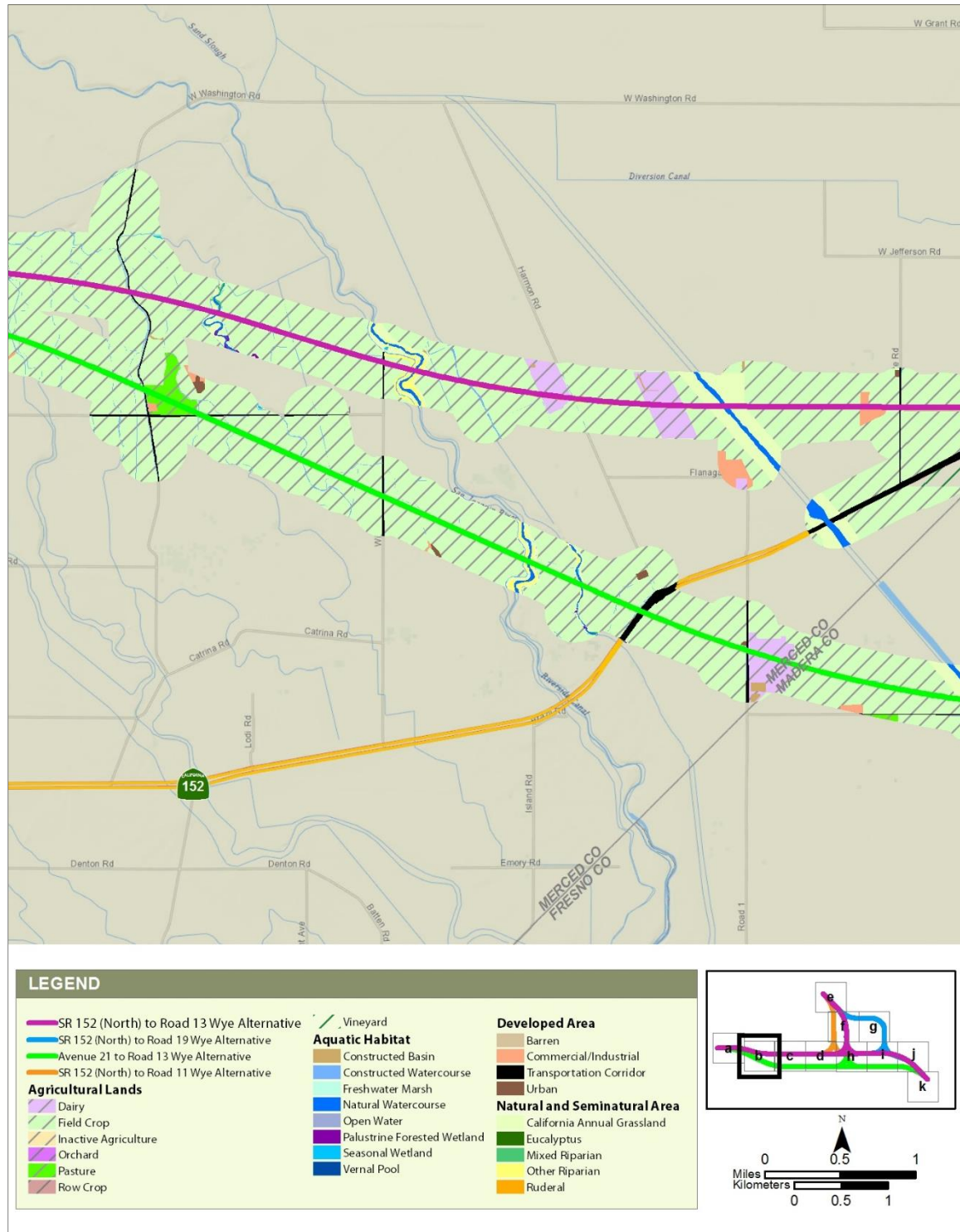




Source: Land cover generated using ESRI ArcGIS versions 10.1, 10.2, and 10.3 from data gathered during field surveys and aerial photo interpretation using NAIP aerial imagery dated 2010–2015  
SR = State Route

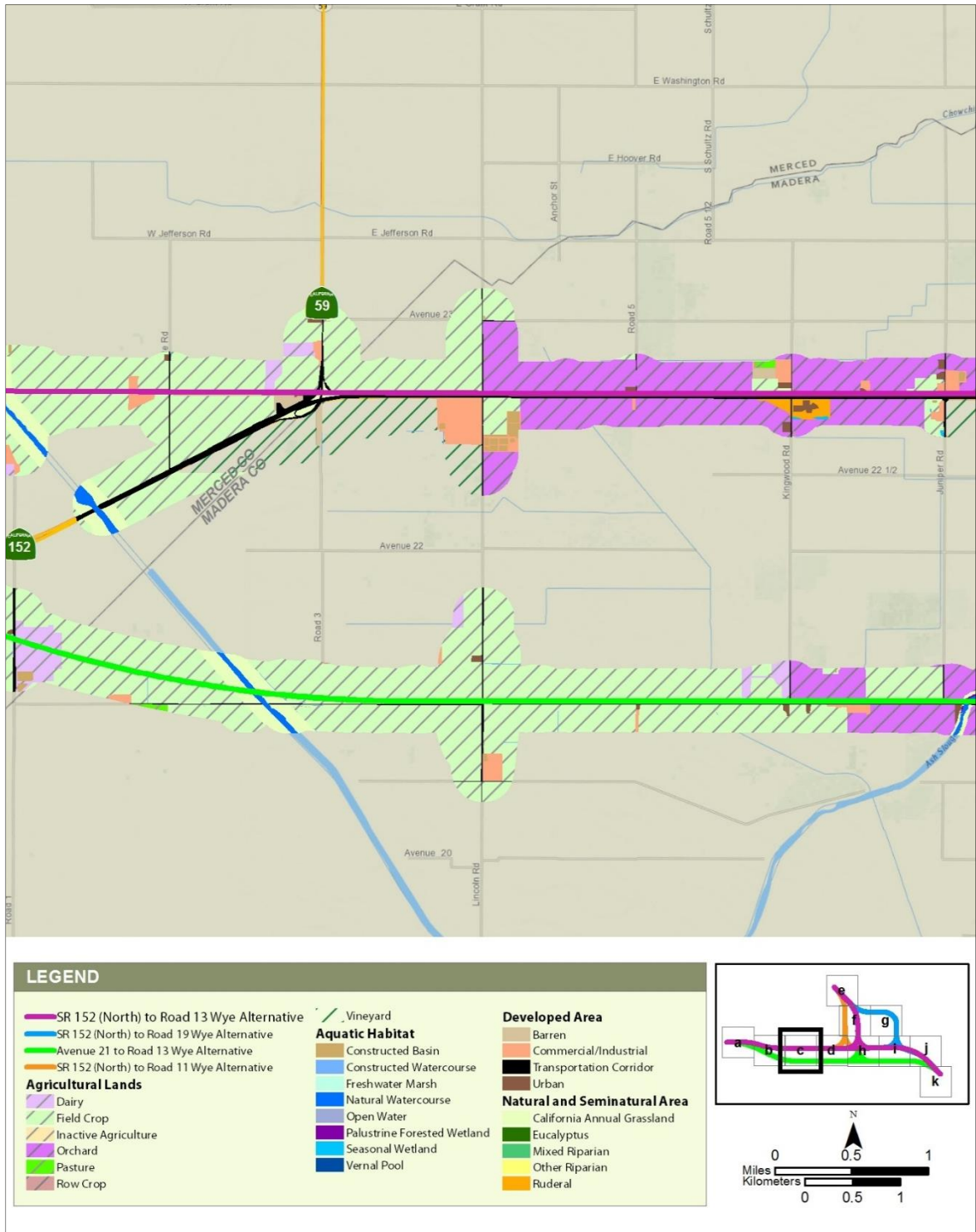
FINAL – MARCH 1, 2018

**Figure H-1 Plant Communities and Land Cover Types within the Habitat Study Area**



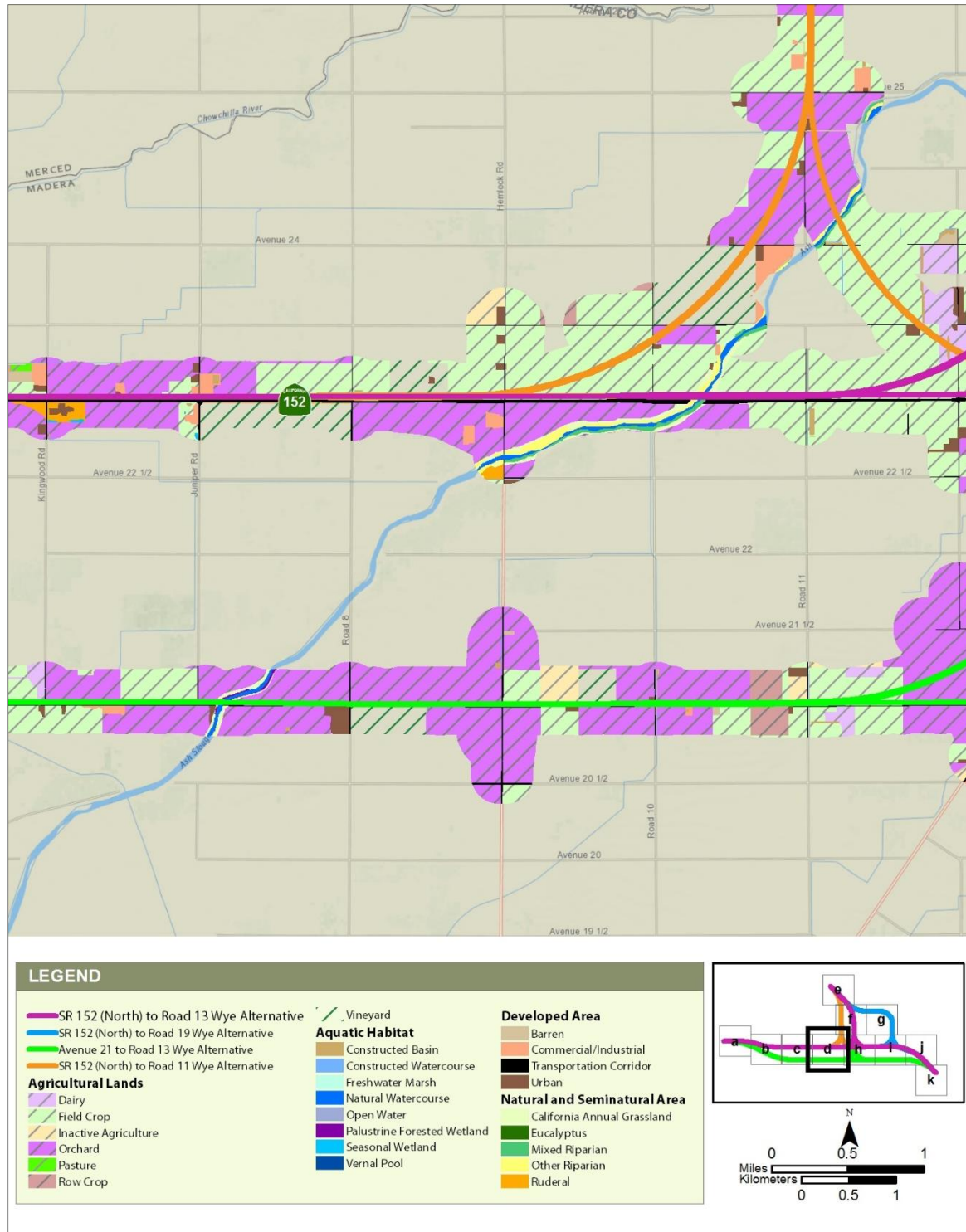
Source: Land cover generated using ESRI ArcGIS versions 10.1, 10.2, and 10.3 from data gathered during field surveys and aerial photo interpretation using NAIP aerial imagery dated 2010–2015  
FINAL – MARCH 1, 2018

**Figure H-2 Plant Communities and Land Cover Types within the Habitat Study Area**



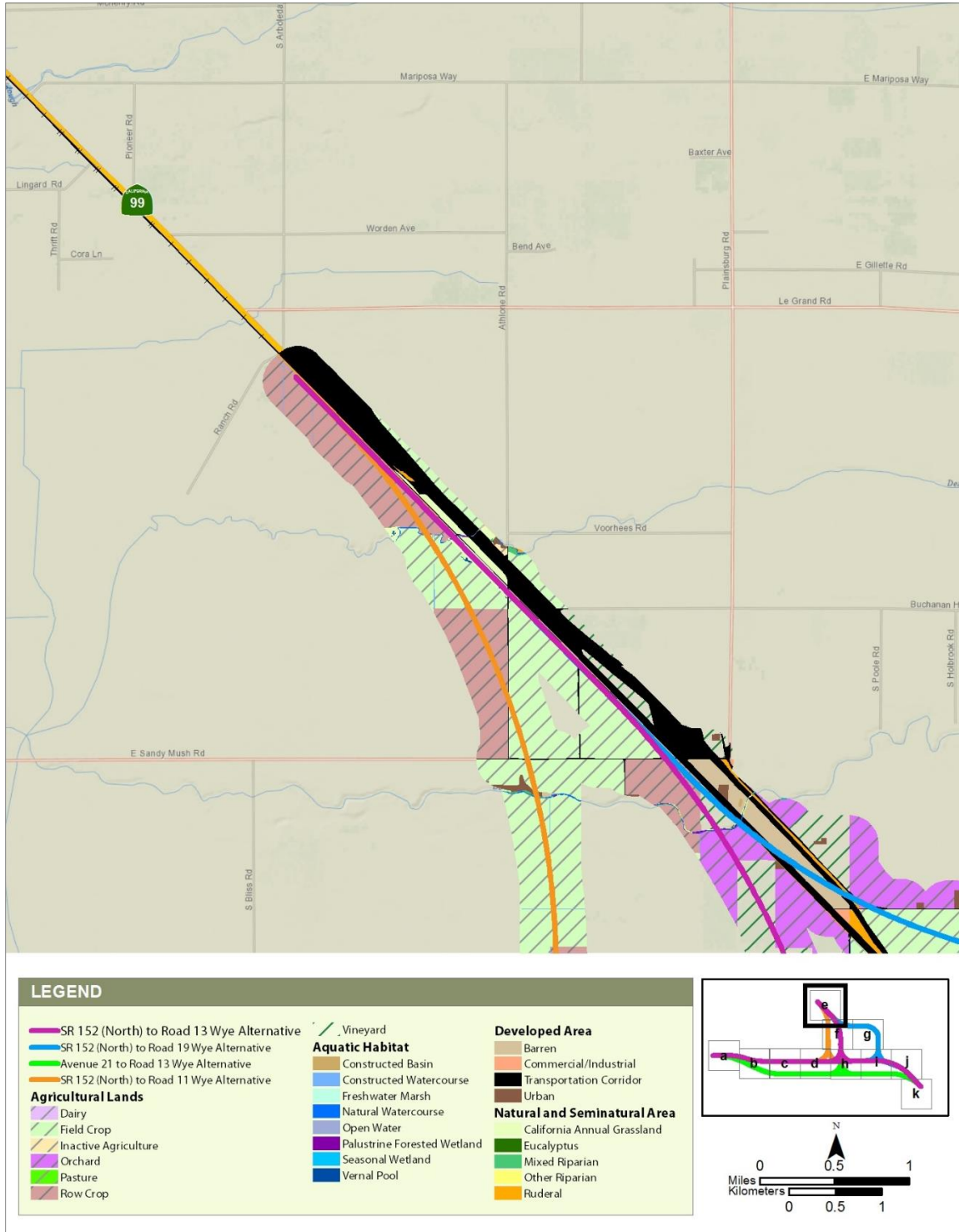
Source: Land cover generated using ESRI ArcGIS versions 10.1, 10.2, and 10.3 from data gathered during field surveys and aerial photo interpretation using NAIP aerial imagery dated 2010–2015  
 FINAL – MARCH 1, 2018

**Figure H-3 Plant Communities and Land Cover Types within the Habitat Study Area**



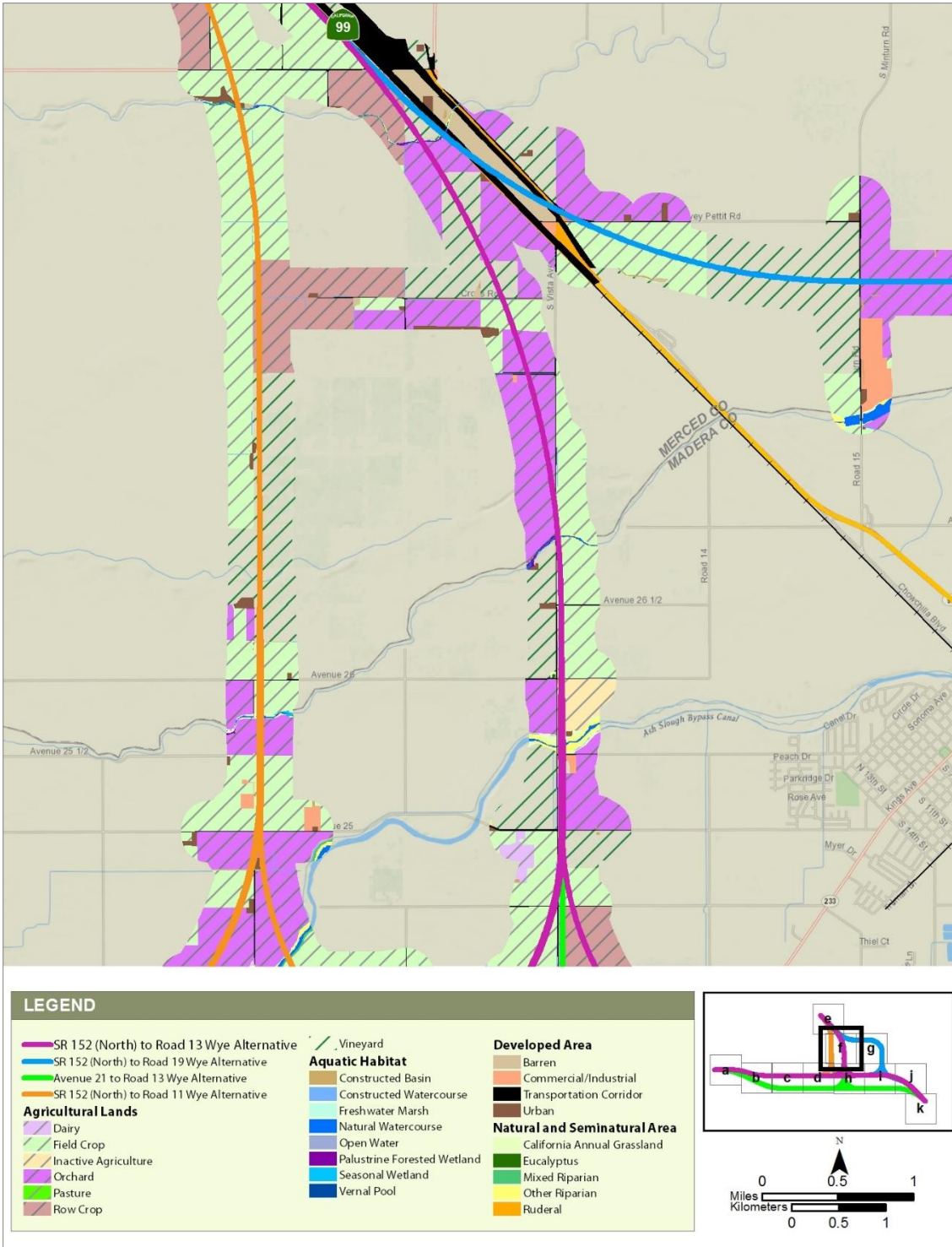
Source: Land cover generated using ESRI ArcGIS versions 10.1, 10.2, and 10.3 from data gathered during field surveys and aerial photo interpretation using NAIP aerial imagery dated 2010–2015  
FINAL – MARCH 1, 2018

**Figure H-4 Plant Communities and Land Cover Types within the Habitat Study Area**



Source: Land cover generated using ESRI ArcGIS versions 10.1, 10.2, and 10.3 from data gathered during field surveys and aerial photo interpretation using NAIP aerial imagery dated 2010–2015  
FINAL – MARCH 1, 2018

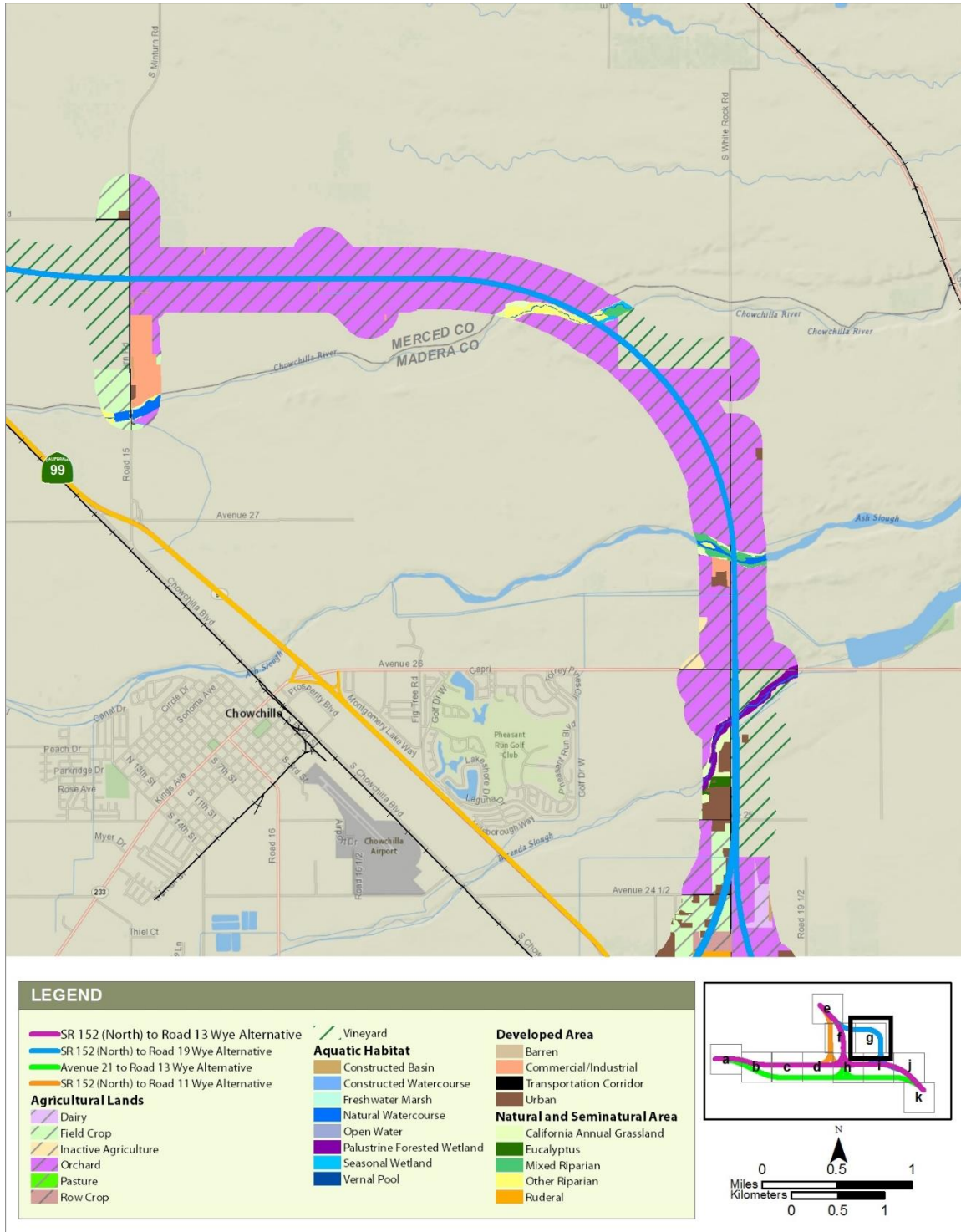
**Figure H-5 Plant Communities and Land Cover Types within the Habitat Study Area**



Source: Land cover generated using ESRI ArcGIS versions 10.1, 10.2, and 10.3 from data gathered during field surveys and aerial photo interpretation using NAIP aerial imagery dated 2010–2015  
FINAL – MARCH 1, 2018

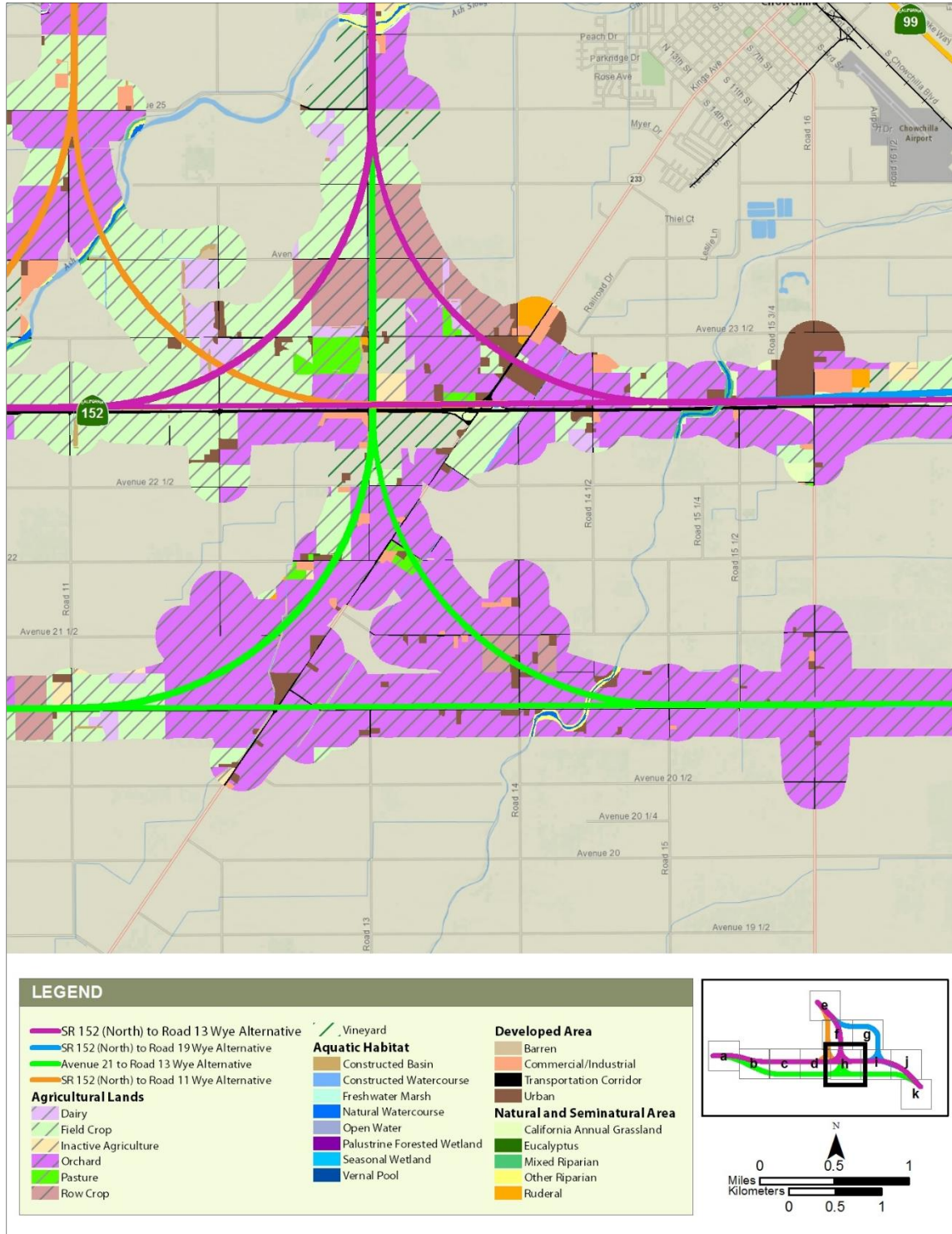
**Figure H-6 Plant Communities and Land Cover Types within the Habitat Study Area**





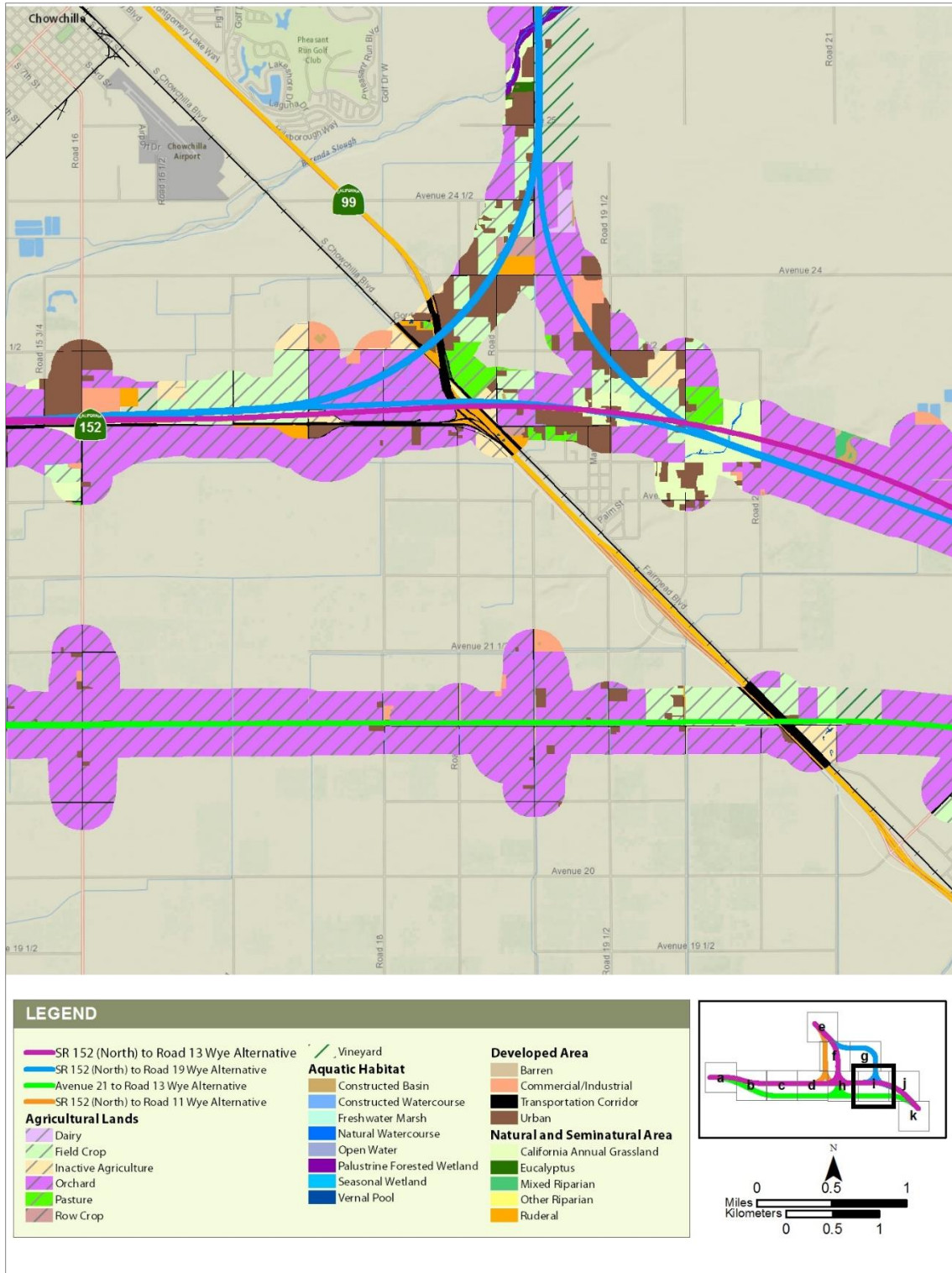
Source: Land cover generated using ESRI ArcGIS versions 10.1, 10.2, and 10.3 from data gathered during field surveys and aerial photo interpretation using NAIP aerial imagery dated 2010–2015  
FINAL – MARCH 1, 2018

**Figure H-7 Plant Communities and Land Cover Types within the Habitat Study Area**



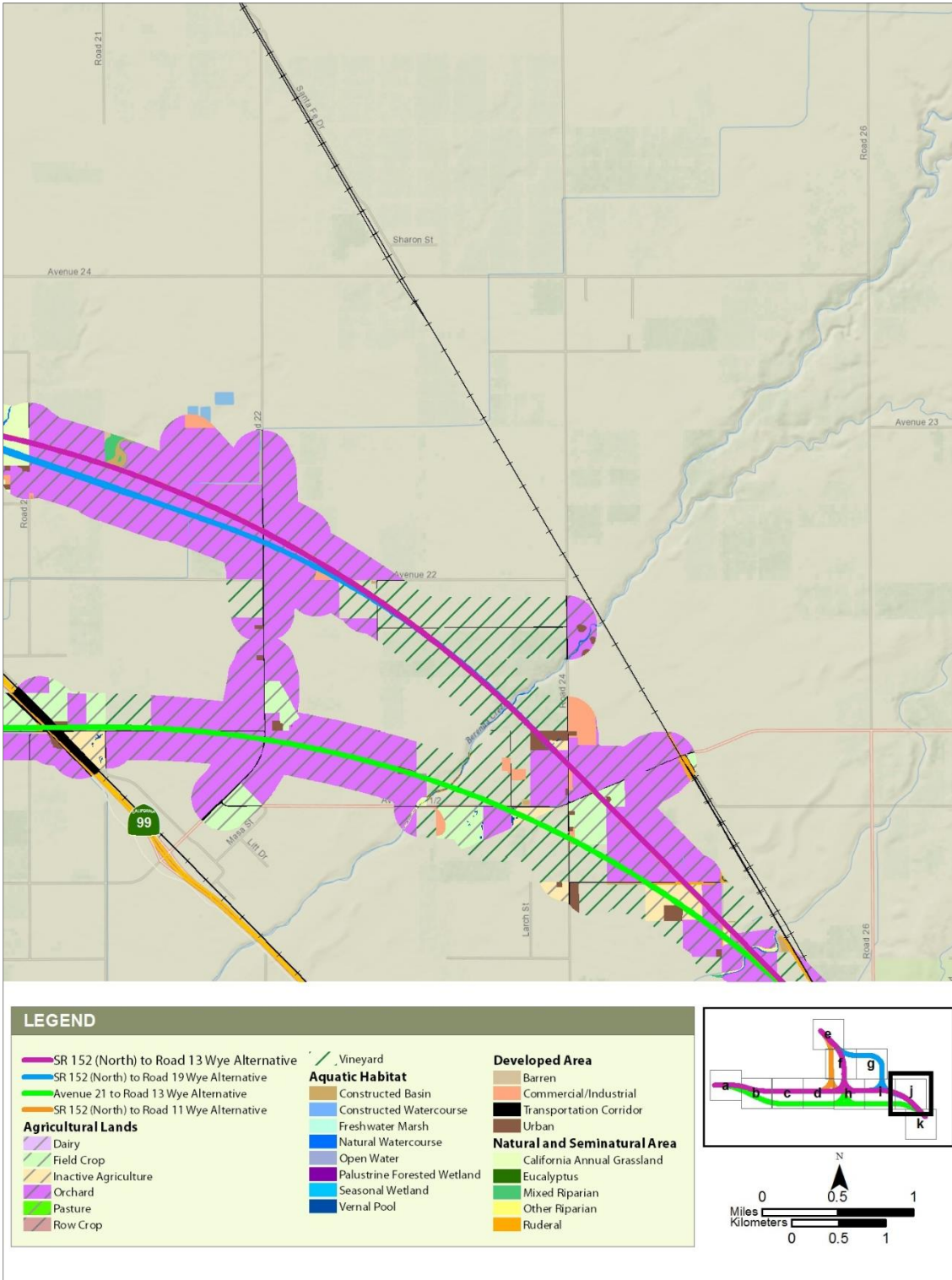
Source: Land cover generated using ESRI ArcGIS versions 10.1, 10.2, and 10.3 from data gathered during field surveys and aerial photo interpretation using NAIP aerial imagery dated 2010–2015  
FINAL – MARCH 1, 2018

**Figure H-8 Plant Communities and Land Cover Types within the Habitat Study Area**



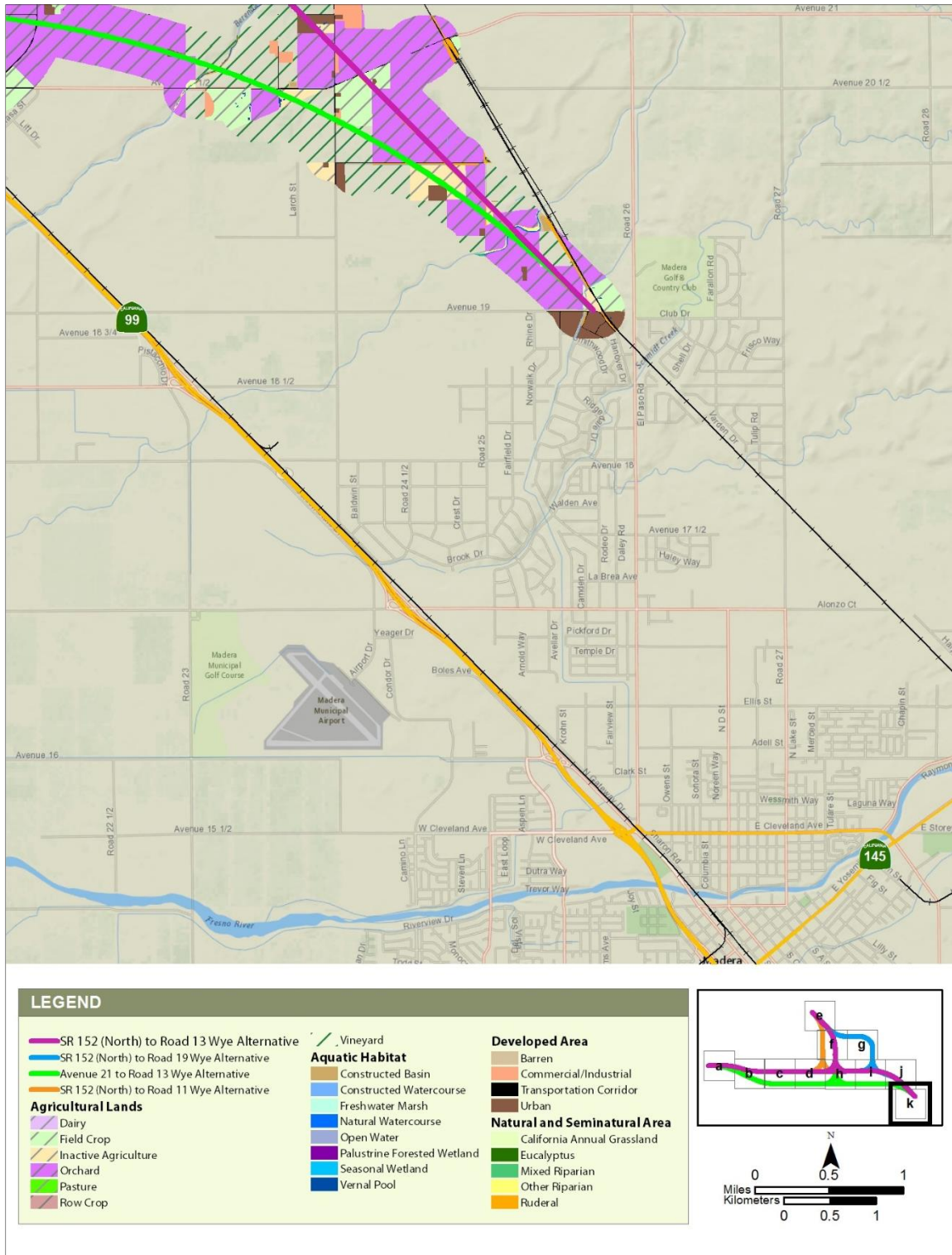
Source: Land cover generated using ESRI ArcGIS versions 10.1, 10.2, and 10.3 from data gathered during field surveys and aerial photo interpretation using NAIP aerial imagery dated 2010–2015  
 FINAL – MARCH 1, 2018

**Figure H-9 Plant Communities and Land Cover Types within the Habitat Study Area**



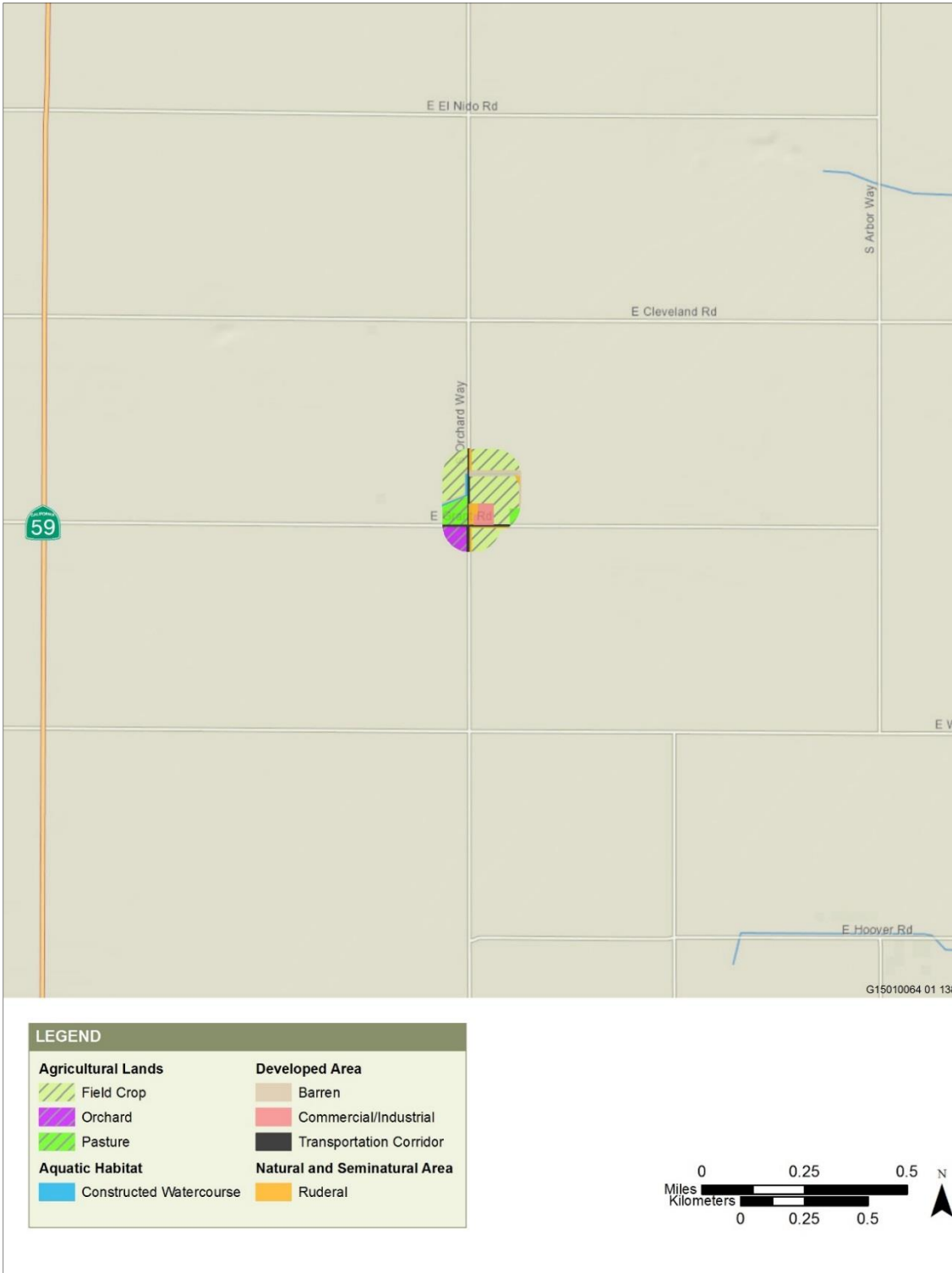
Source: Land cover generated using ESRI ArcGIS versions 10.1, 10.2, and 10.3 from data gathered during field surveys and aerial photo interpretation using NAIP aerial imagery dated 2010–2015  
FINAL – MARCH 1, 2018

**Figure H-10 Plant Communities and Land Cover Types within the Habitat Study Area**



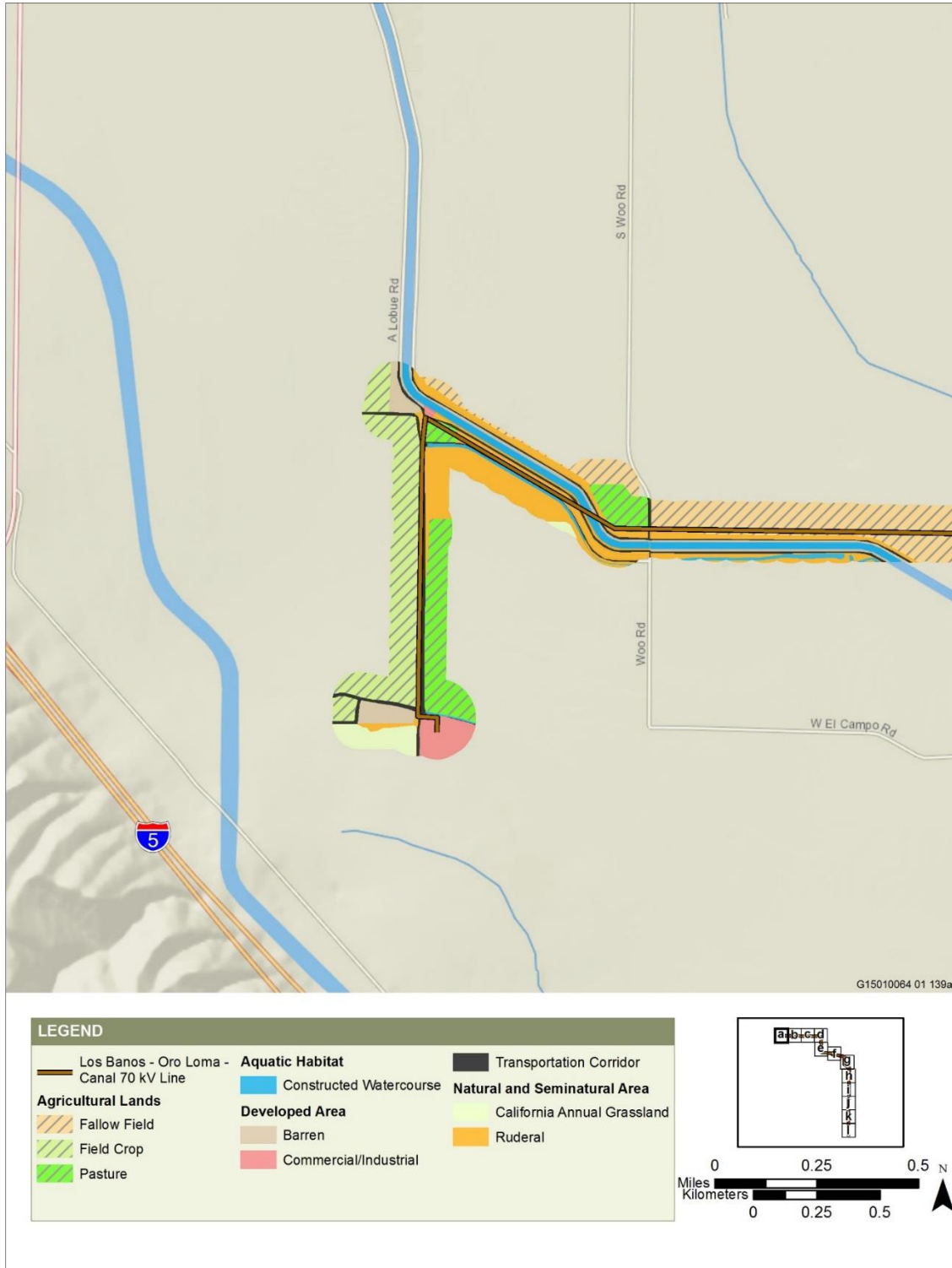
Source: Land cover generated using ESRI ArcGIS versions 10.1, 10.2, and 10.3 from data gathered during field surveys and aerial photo interpretation using NAIP aerial imagery dated 2010–2015  
 FINAL – MARCH 1, 2018

**Figure H-11 Plant Communities and Land Cover Types within the Habitat Study Area**



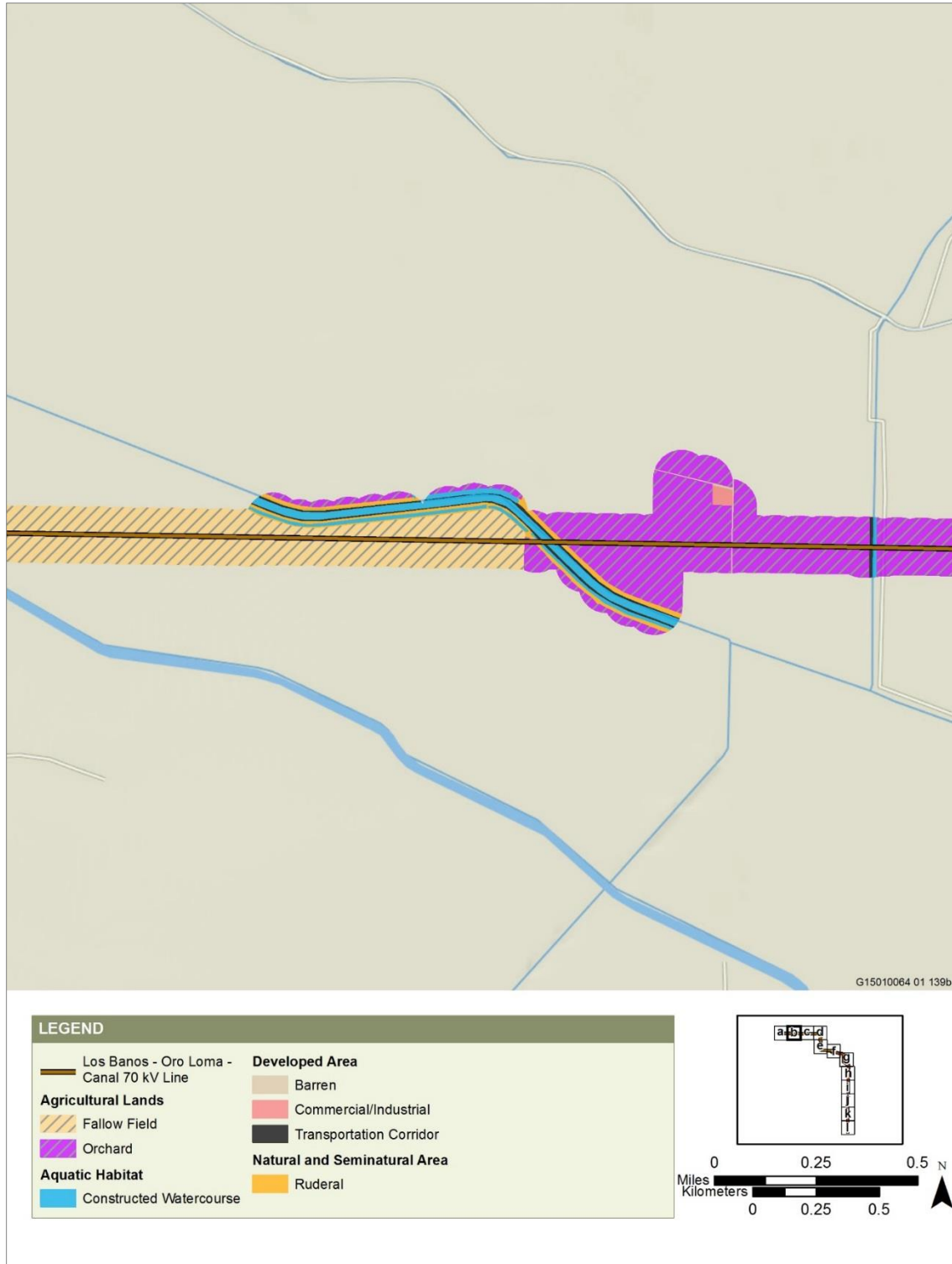
Sources: Land cover generated using ESRI ArcGIS versions 10.4 from data gathered during field surveys and aerial photo interpretation using NAIP and Google Earth aerial imagery dated 2014; Authority and FRA, 2016a  
FINAL – DECEMBER 2016

**Figure H-12 Plant Communities and Land Cover Types in the Habitat Study Area  
Site 6 – El Nido, El Nido Substation**



Sources: Land cover generated using ESRI ArcGIS versions 10.4 from data gathered during field surveys and aerial photo interpretation using NAIP and Google Earth aerial imagery dated 2014; Authority and FRA, 2016a  
FINAL – DECEMBER 2016

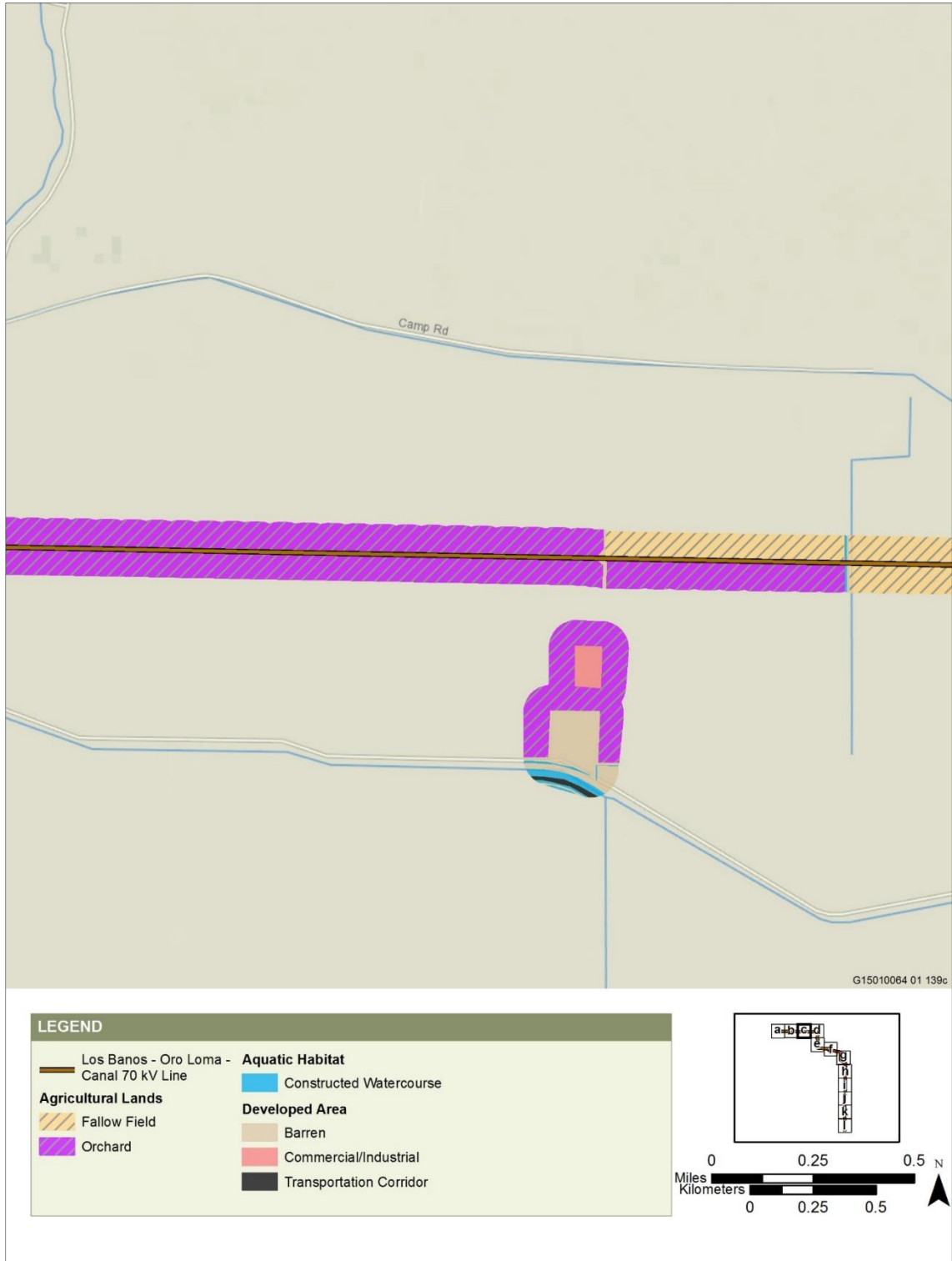
**Figure H-13 Plant Communities and Land Cover Types in the Habitat Study Area  
Site 6 – El Nido, Los Banos – Oro Loma – Canal 70 kV Power Line**



Sources: Land cover generated using ESRI ArcGIS versions 10.4 from data gathered during field surveys and aerial photo interpretation using NAIP and Google Earth aerial imagery dated 2014; Authority and FRA, 2016a  
FINAL – DECEMBER 2016

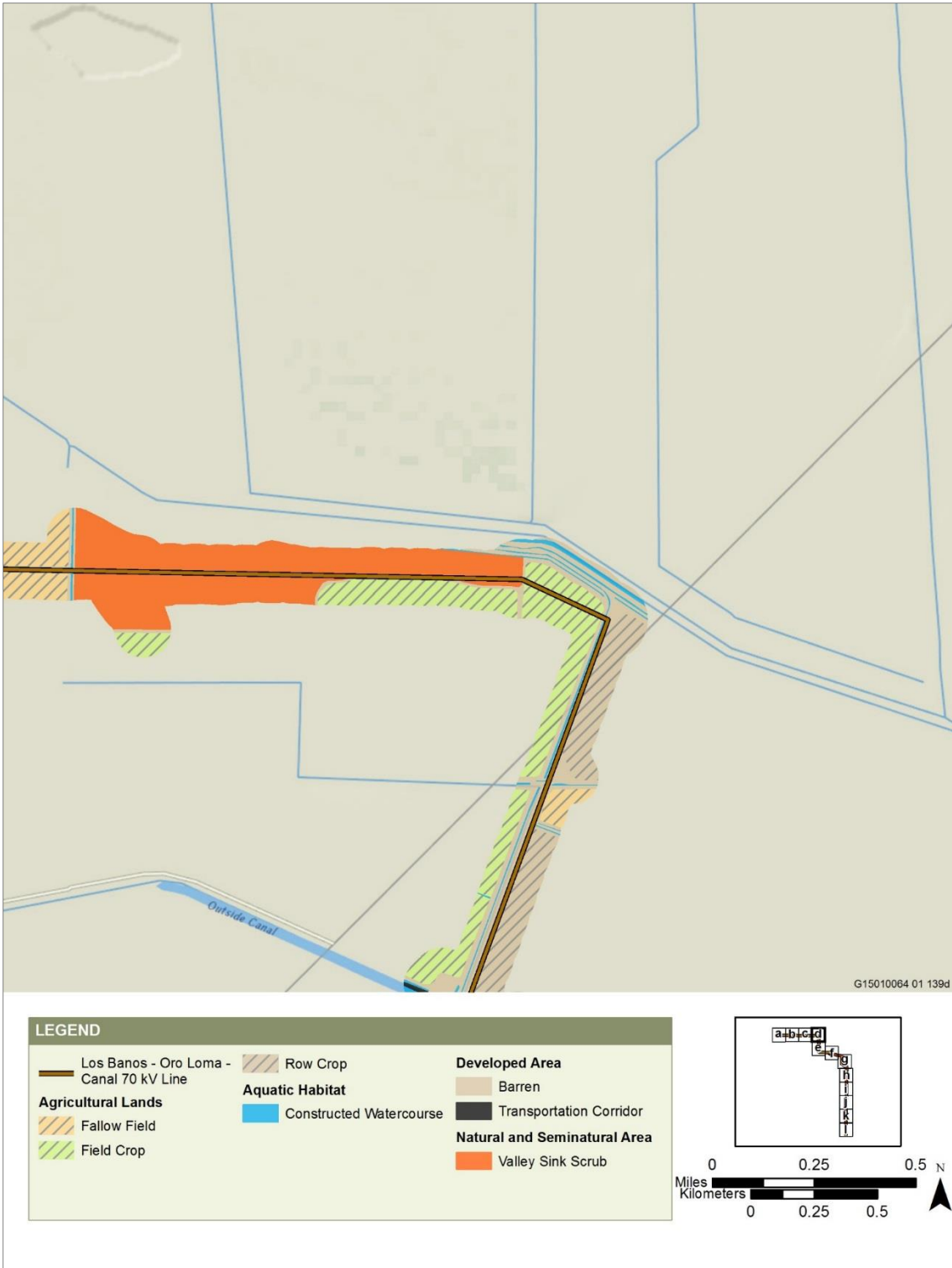
**Figure H-14 Plant Communities and Land Cover Types in the Habitat Study Area  
Site 6 – El Nido, Los Banos – Oro Loma – Canal 70 kV Power Line**





Sources: Land cover generated using ESRI ArcGIS versions 10.4 from data gathered during field surveys and aerial photo interpretation using NAIP and Google Earth aerial imagery dated 2014; Authority and FRA, 2016a  
FINAL – DECEMBER 2016

**Figure H-15 Plant Communities and Land Cover Types in the Habitat Study Area  
Site 6 – El Nido, Los Banos – Oro Loma – Canal 70 kV Power Line**



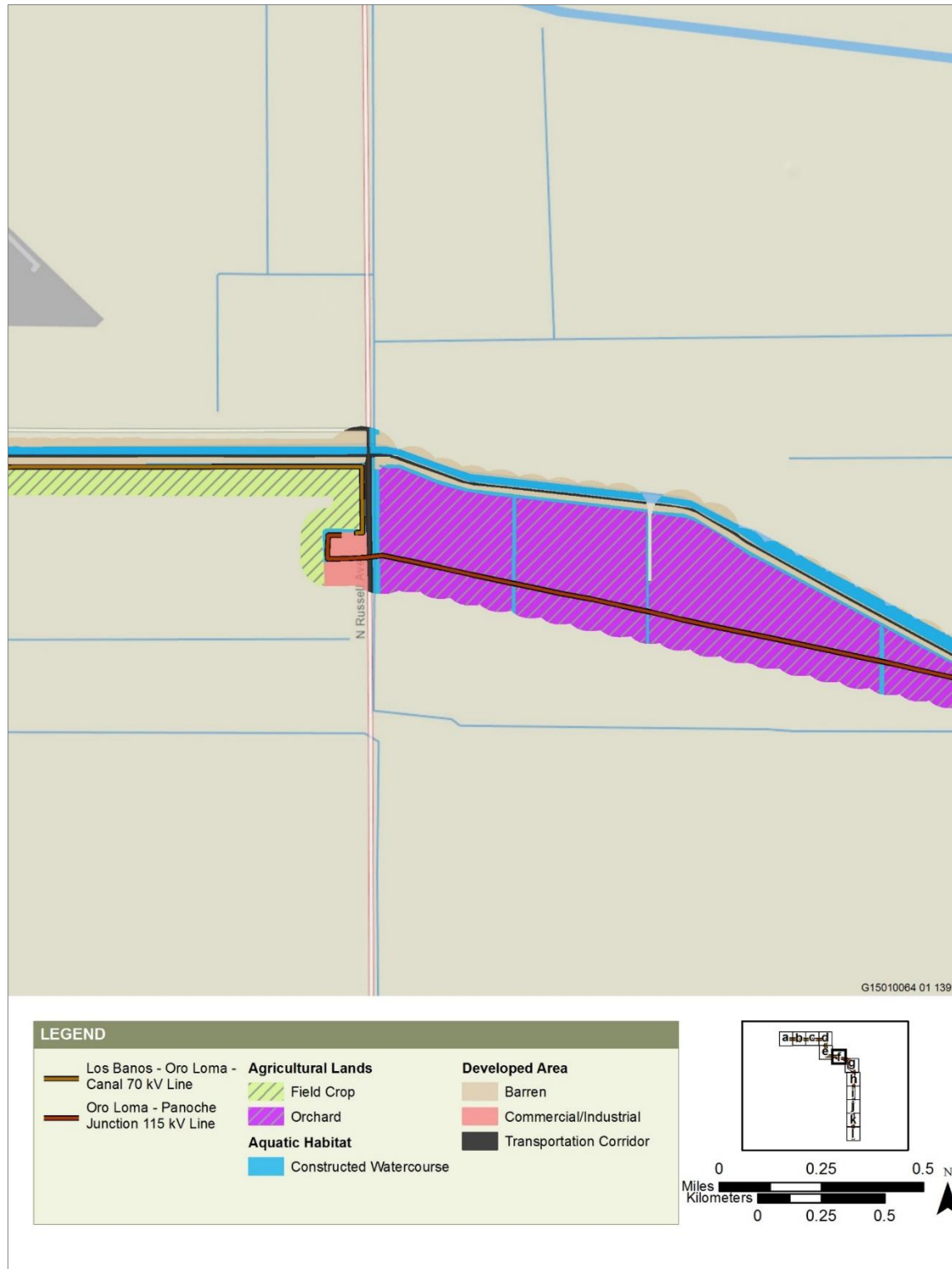
Sources: Land cover generated using ESRI ArcGIS versions 10.4 from data gathered during field surveys and aerial photo interpretation using NAIP and Google Earth aerial imagery dated 2014; Authority and FRA, 2016a  
FINAL - DECEMBER 2016

**Figure H-16 Plant Communities and Land Cover Types in the Habitat Study Area  
Site 6 – El Nido, Los Banos – Oro Loma – Canal 70 kV Power Line**



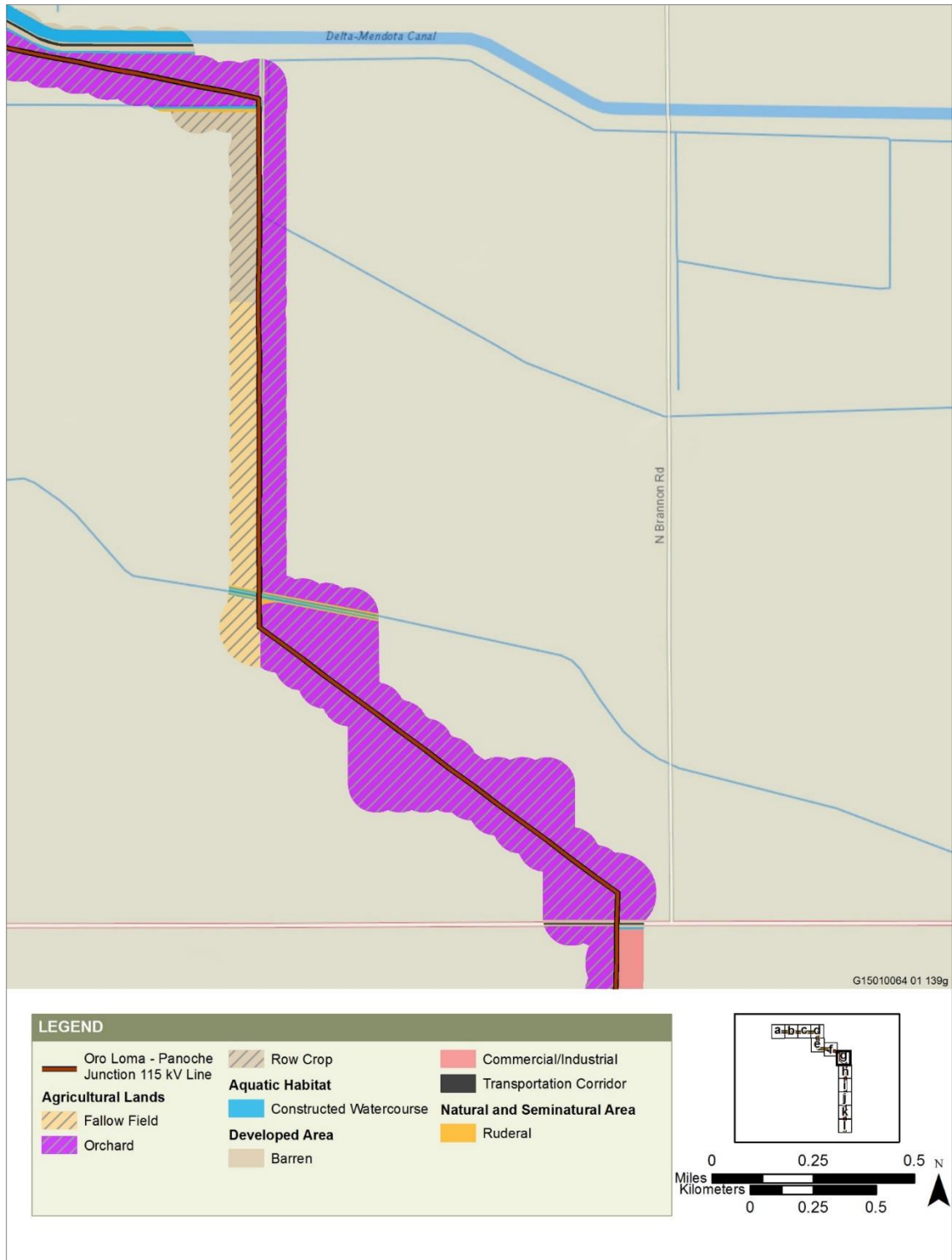
Sources: Land cover generated using ESRI ArcGIS versions 10.4 from data gathered during field surveys and aerial photo interpretation using NAIP and Google Earth aerial imagery dated 2014; Authority and FRA, 2016a  
FINAL – DECEMBER 2016

**Figure H-17 Plant Communities and Land Cover Types in the Habitat Study Area  
Site 6 – El Nido, Los Banos – Oro Loma – Canal 70 kV Power Line**



Sources: Land cover generated using ESRI ArcGIS versions 10.4 from data gathered during field surveys and aerial photo interpretation using NAIP and Google Earth aerial imagery dated 2014; Authority and FRA, 2016a  
FINAL – DECEMBER 2016

**Figure H-18 Plant Communities and Land Cover Types in the Habitat Study Area  
Site 6 – El Nido, Los Banos – Oro Loma – Canal 70 kV Power Line and Panoche Junction –  
Oro Loma 115 kV Power Line**



Sources: Land cover generated using ESRI ArcGIS versions 10.4 from data gathered during field surveys and aerial photo interpretation using NAIP and Google Earth aerial imagery dated 2014; Authority and FRA, 2016a  
FINAL – DECEMBER 2016

**Figure H-19 Plant Communities and Land Cover Types in the Habitat Study Area Site 6 – El Nido, Panoche Junction – Oro Loma 115 kV Power Line**



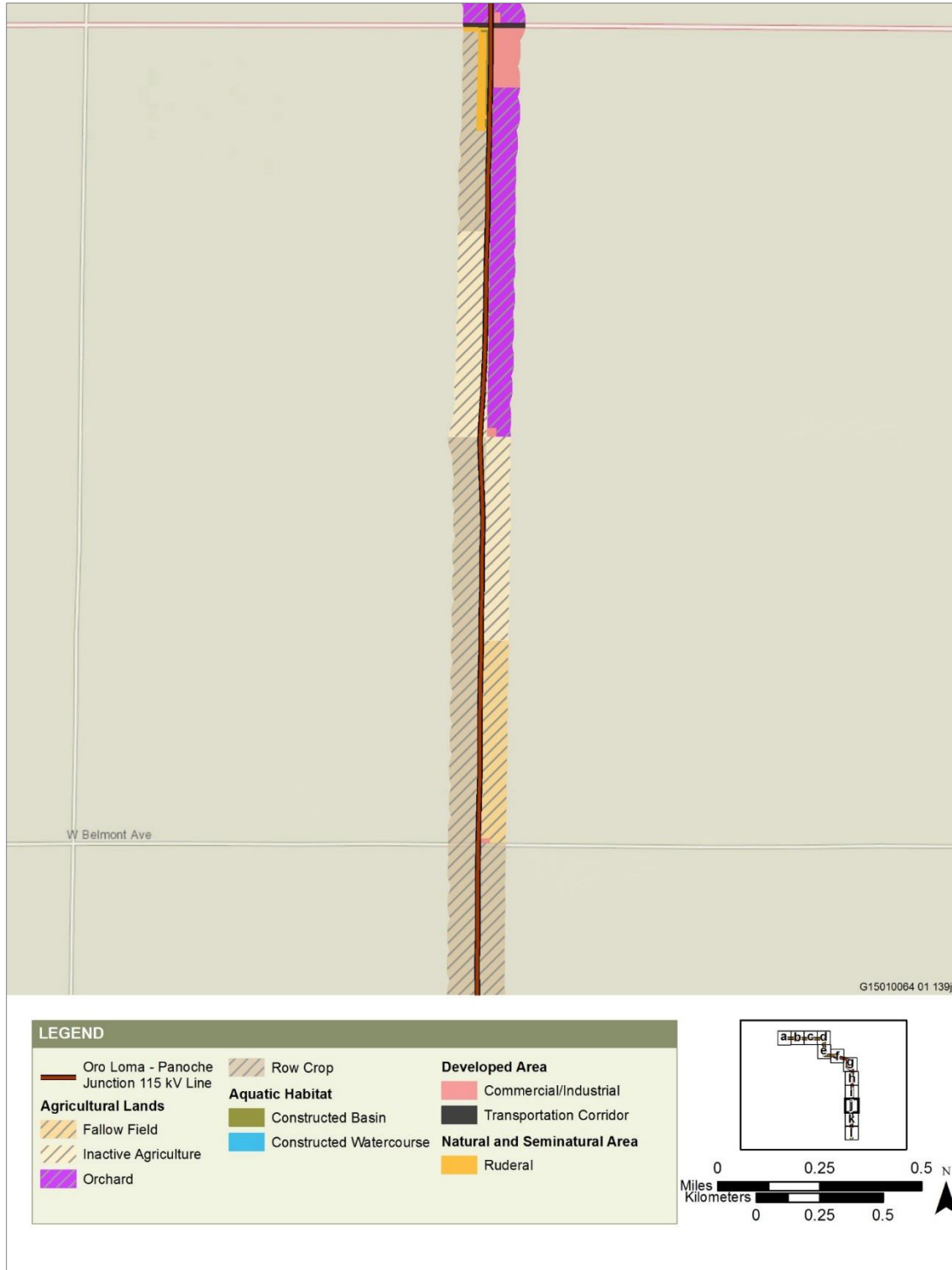
Sources: Land cover generated using ESRI ArcGIS versions 10.4 from data gathered during field surveys and aerial photo interpretation using NAIP and Google Earth aerial imagery dated 2014; Authority and FRA, 2016a  
FINAL – DECEMBER 2016

**Figure H-20 Plant Communities and Land Cover Types in the Habitat Study Area  
Site 6 – El Nido, Panoche Junction – Oro Loma 115 kV Power Line**



Sources: Land cover generated using ESRI ArcGIS versions 10.4 from data gathered during field surveys and aerial photo interpretation using NAIP and Google Earth aerial imagery dated 2014; Authority and FRA, 2016a  
 FINAL – DECEMBER 2016

**Figure H-21 Plant Communities and Land Cover Types in the Habitat Study Area  
 Site 6 – El Nido, Panoche Junction – Oro Loma 115 kV Power Line**



Sources: Land cover generated using ESRI ArcGIS versions 10.4 from data gathered during field surveys and aerial photo interpretation using NAIP and Google Earth aerial imagery dated 2014; Authority and FRA, 2016a  
FINAL – DECEMBER 2016

**Figure H-22 Plant Communities and Land Cover Types in the Habitat Study Area Site 6 – El Nido, Panoche Junction – Oro Loma 115 kV Power Line**





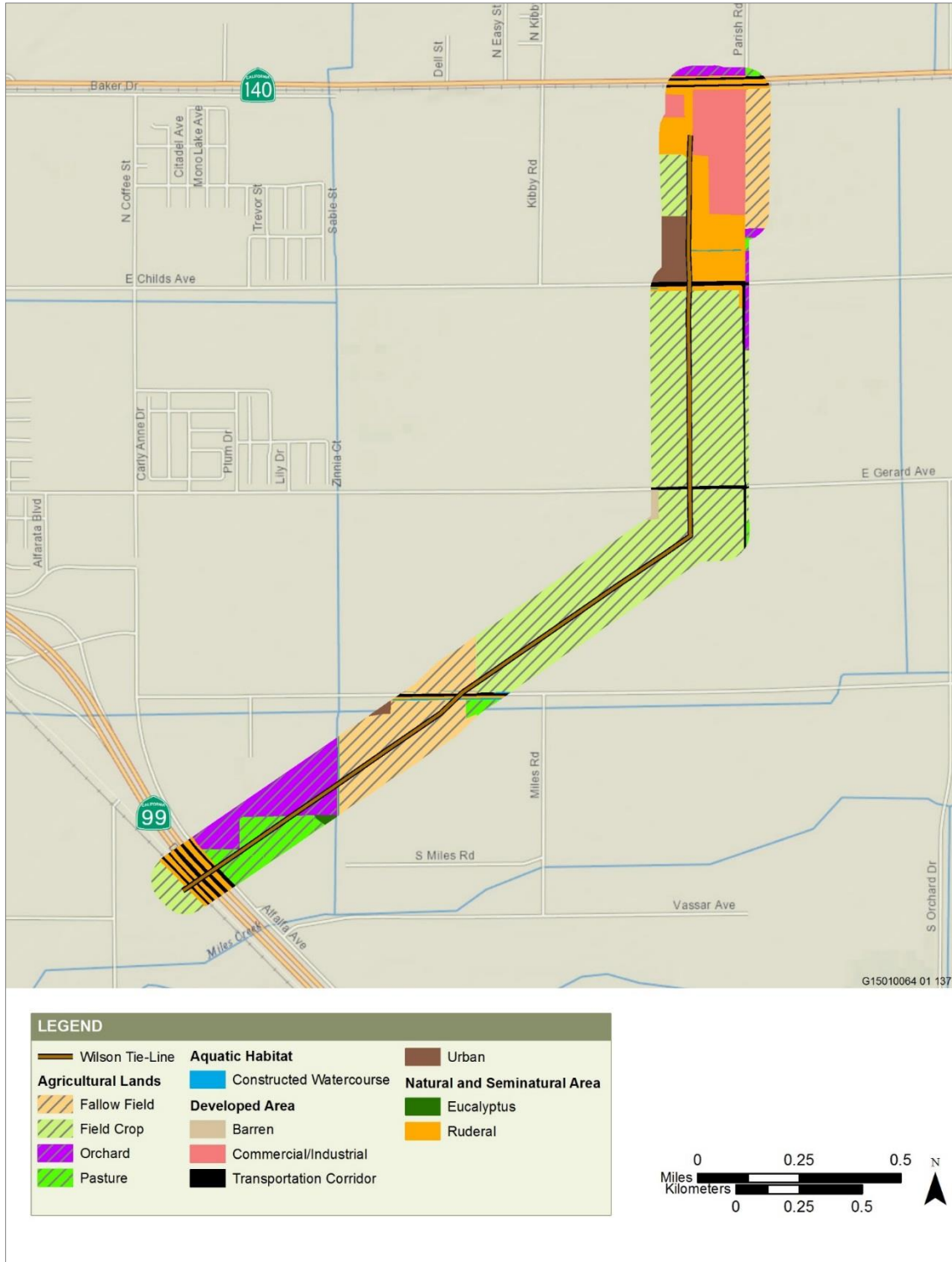
Sources: Land cover generated using ESRI ArcGIS versions 10.4 from data gathered during field surveys and aerial photo interpretation using NAIP and Google Earth aerial imagery dated 2014; Authority and FRA, 2016a  
 FINAL – DECEMBER 2016

**Figure H-23 Plant Communities and Land Cover Types in the Habitat Study Area Site 6 – El Nido, Panoche Junction – Oro Loma 115 kV Power Line**



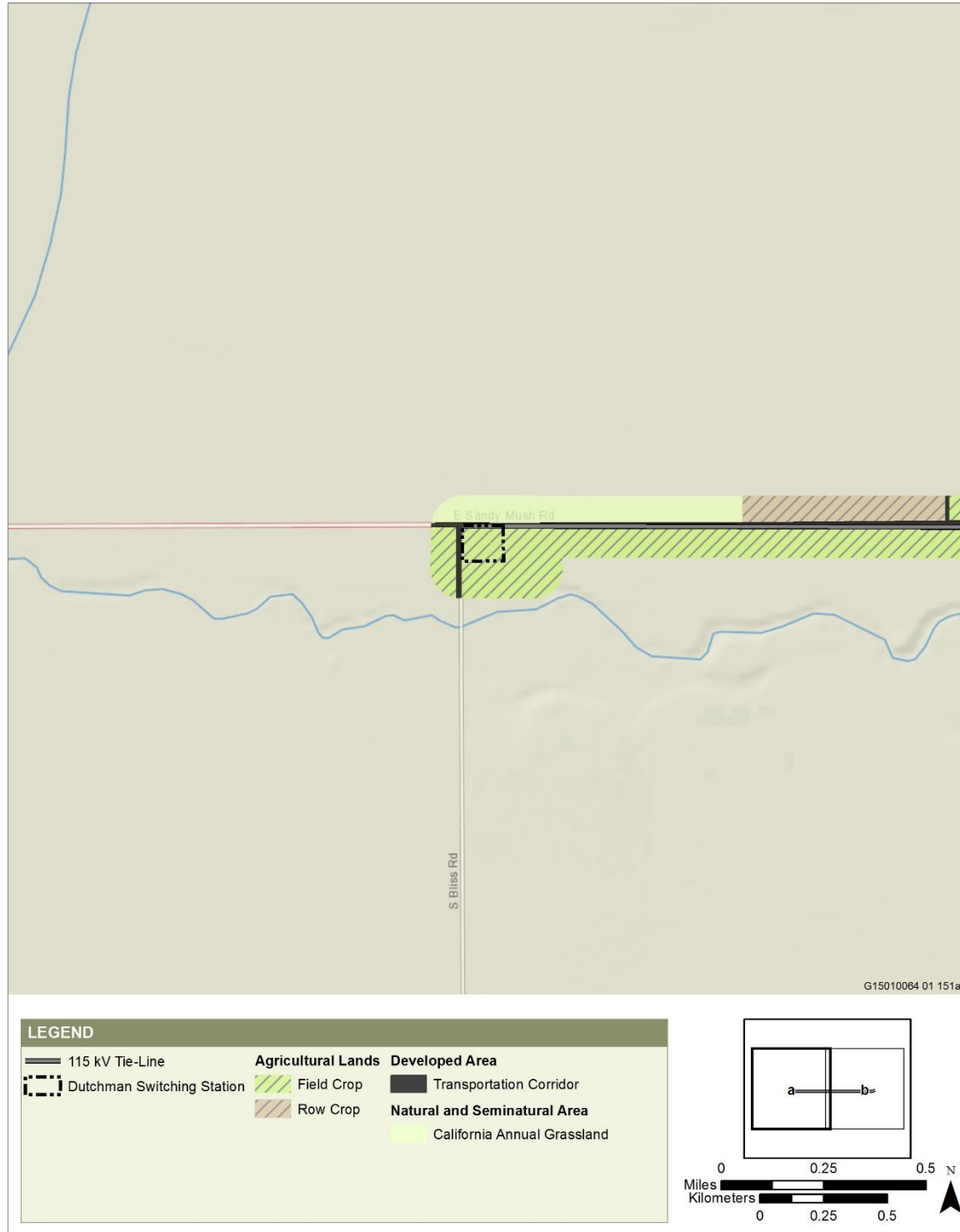
Sources: Land cover generated using ESRI ArcGIS versions 10.4 from data gathered during field surveys and aerial photo interpretation using NAIP and Google Earth aerial imagery dated 2014; Authority and FRA, 2016a  
FINAL – DECEMBER 2016

**Figure H-24 Plant Communities and Land Cover Types in the Habitat Study Area Site 6 – El Nido, Panoche Junction – Oro Loma 115 kV Power Line**



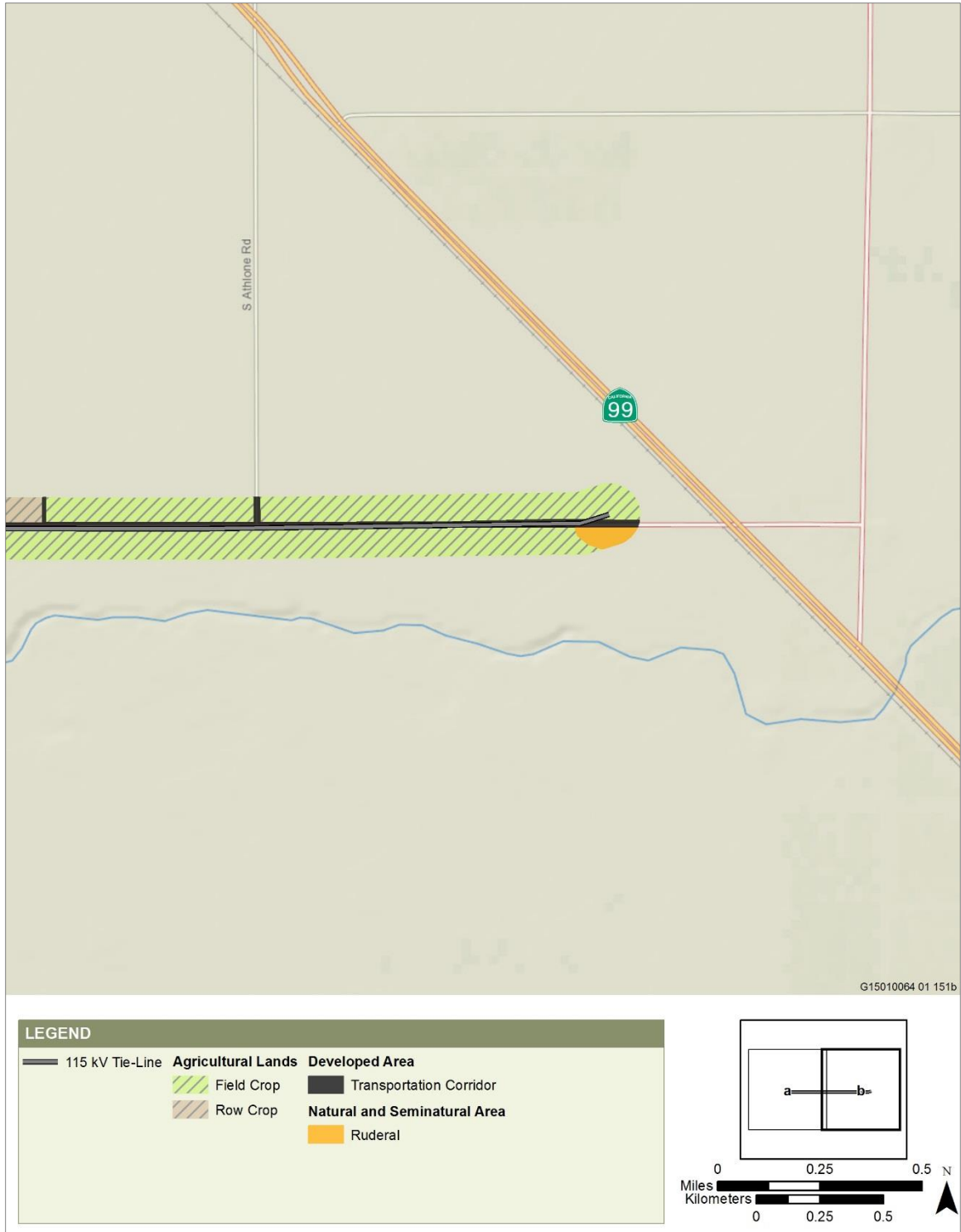
Sources: Land cover generated using ESRI ArcGIS versions 10.4 from data gathered during field surveys and aerial photo interpretation using NAIP and Google Earth aerial imagery dated 2014; Authority and FRA, 2016a  
 FINAL – DECEMBER 2016

**Figure H-25 Plant Communities and Land Cover Types in the Habitat Study Area  
 Site 7 – Wilson, Wilson Substation and 230 kV Tie Line**



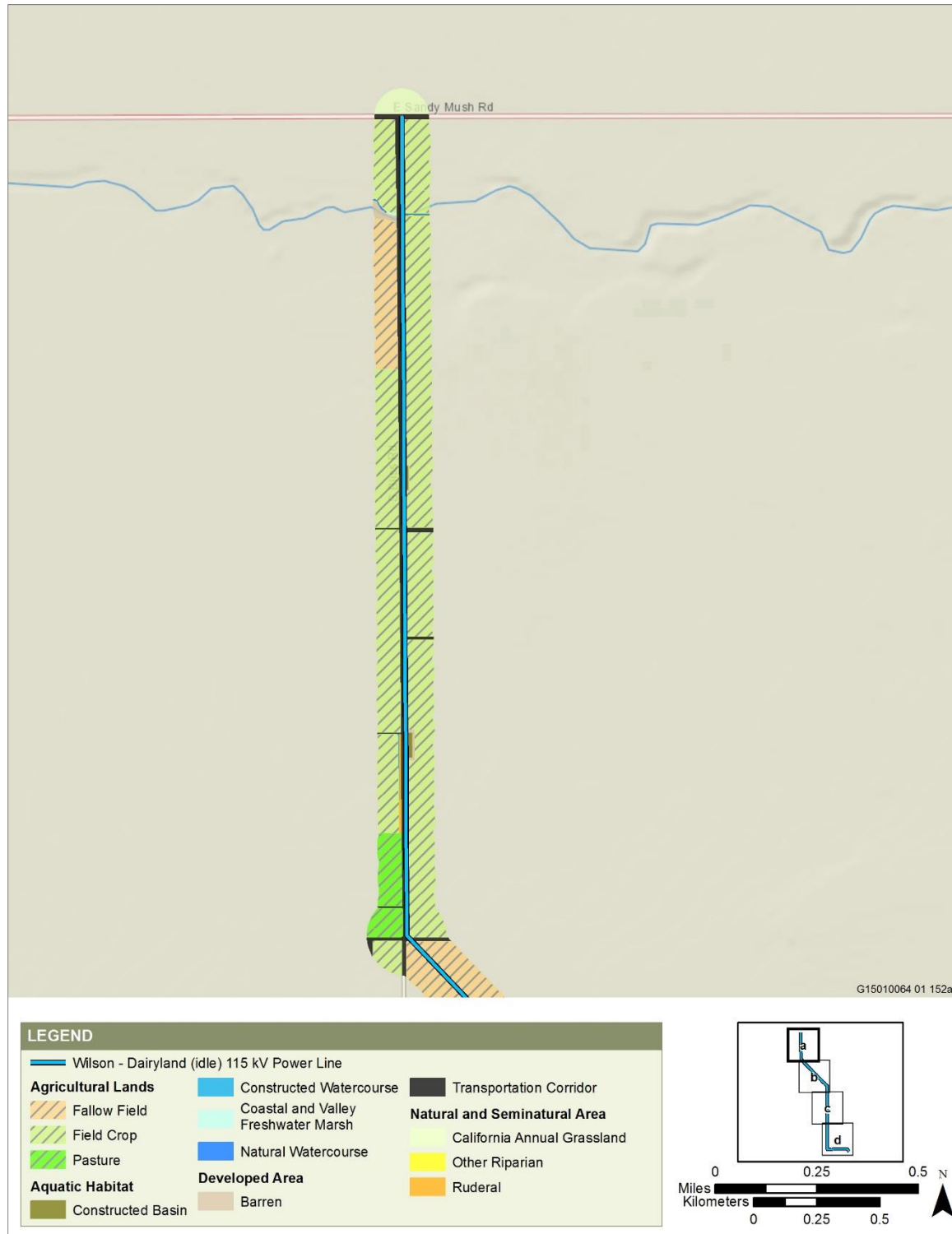
Sources: Land cover generated using ESRI ArcGIS versions 10.4 from data gathered during field surveys and aerial photo interpretation using NAIP and Google Earth aerial imagery dated 2014; Authority and FRA, 2016a  
FINAL – DECEMBER 2016

**Figure H-26 Plant Communities and Land Cover Types in the Habitat Study Area  
Site 7 – Le Grand Junction/Sandy Mush Road, Dutchman  
Switching Station and 115 kV Tie-Line**



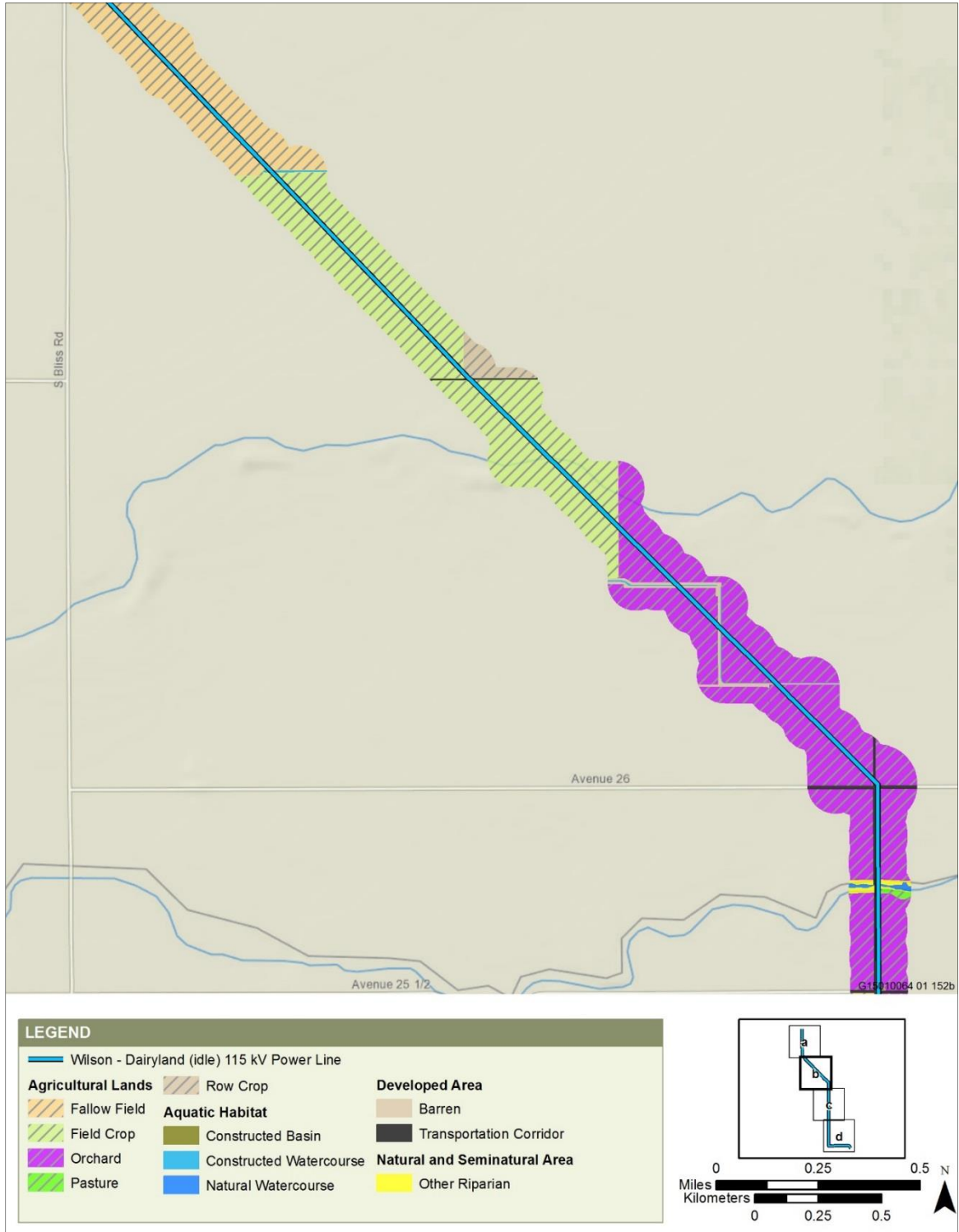
Sources: Land cover generated using ESRI ArcGIS versions 10.4 from data gathered during field surveys and aerial photo interpretation using NAIP and Google Earth aerial imagery dated 2014; Authority and FRA, 2016a  
 FINAL – DECEMBER 2016

**Figure H-27 Plant Communities and Land Cover Types in the Habitat Study Area  
 Site 7 – Le Grand Junction/Sandy Mush Road, 115 kV Tie-Line**



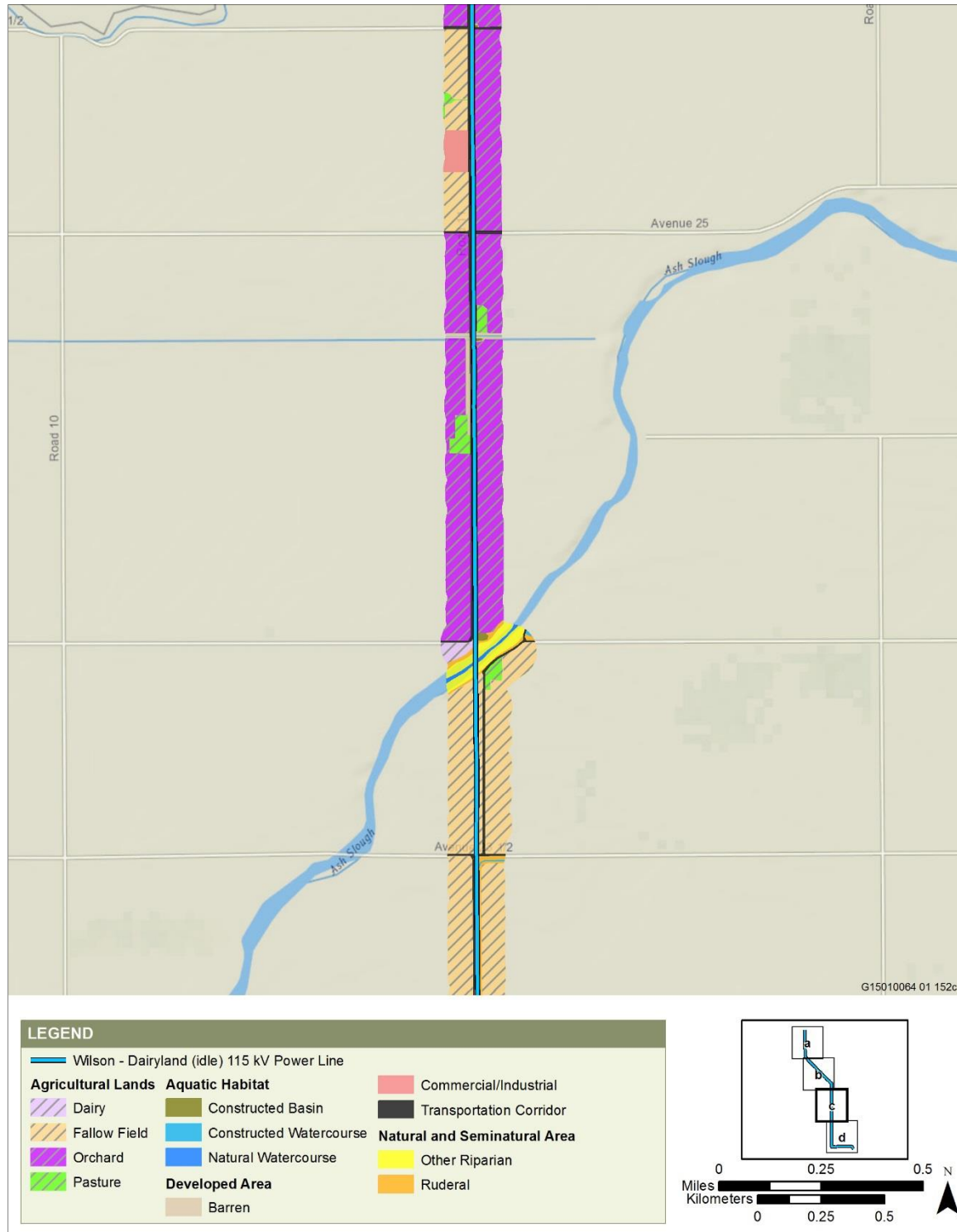
Sources: Land cover generated using ESRI ArcGIS versions 10.4 from data gathered during field surveys and aerial photo interpretation using NAIP and Google Earth aerial imagery dated 2014; Authority and FRA, 2016a  
FINAL – DECEMBER 2016

**Figure H-28 Plant Communities and Land Cover Types in the Habitat Study Area Site 7 – Le Grand Junction/Sandy Mush Road, Wilson – Dairyland (idle) 115 kV Power Line**



Sources: Land cover generated using ESRI ArcGIS versions 10.4 from data gathered during field surveys and aerial photo interpretation using NAIP and Google Earth aerial imagery dated 2014; Authority and FRA, 2016a  
 FINAL – DECEMBER 2016

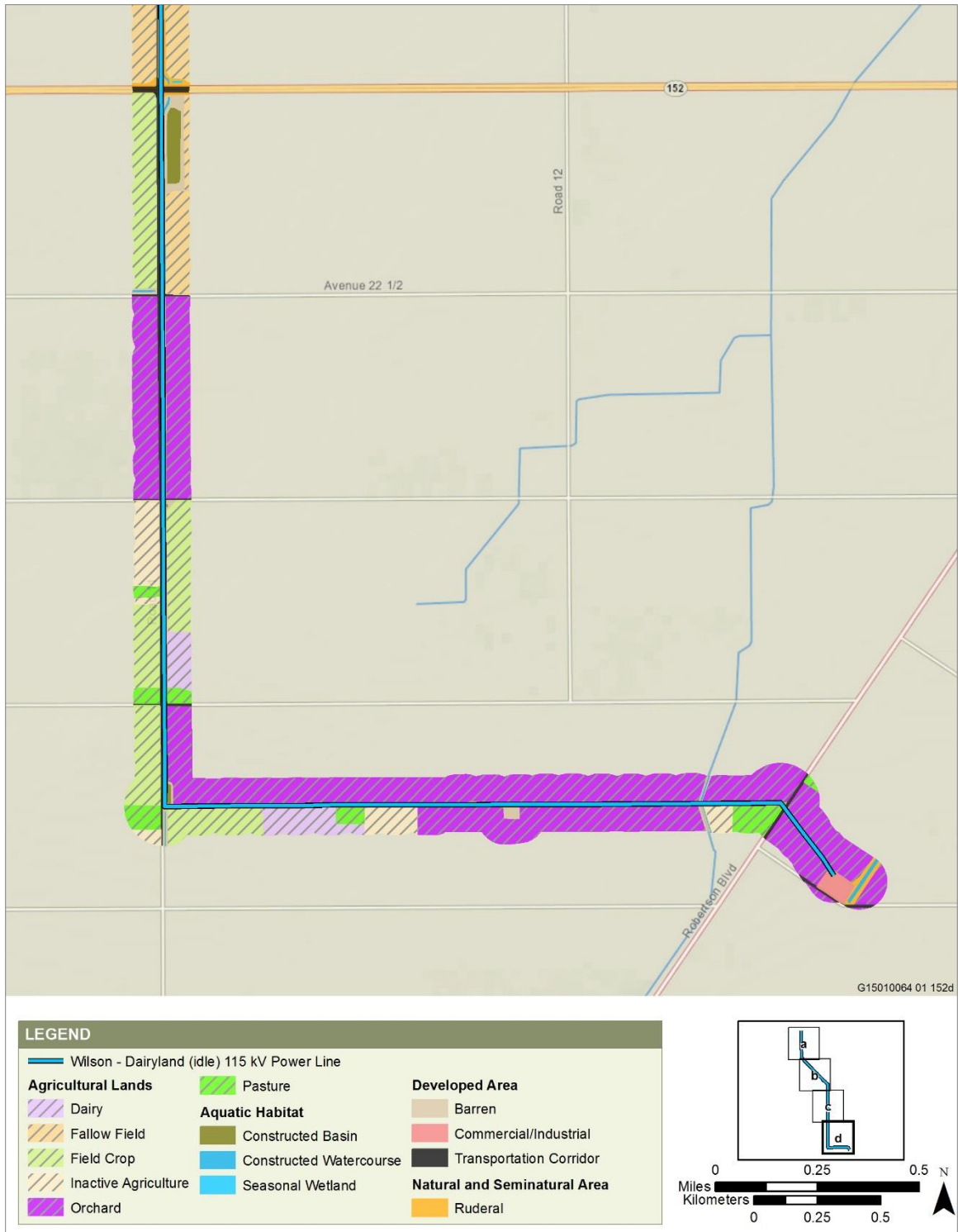
**Figure H-29 Plant Communities and Land Cover Types in the Habitat Study Area Site 7 – Le Grand Junction/Sandy Mush Road, Wilson – Dairyland (idle) 115 kV Power Line**



Sources: Land cover generated using ESRI ArcGIS versions 10.4 from data gathered during field surveys and aerial photo interpretation using NAIP and Google Earth aerial imagery dated 2014; Authority and FRA, 2016a  
FINAL – DECEMBER 2016

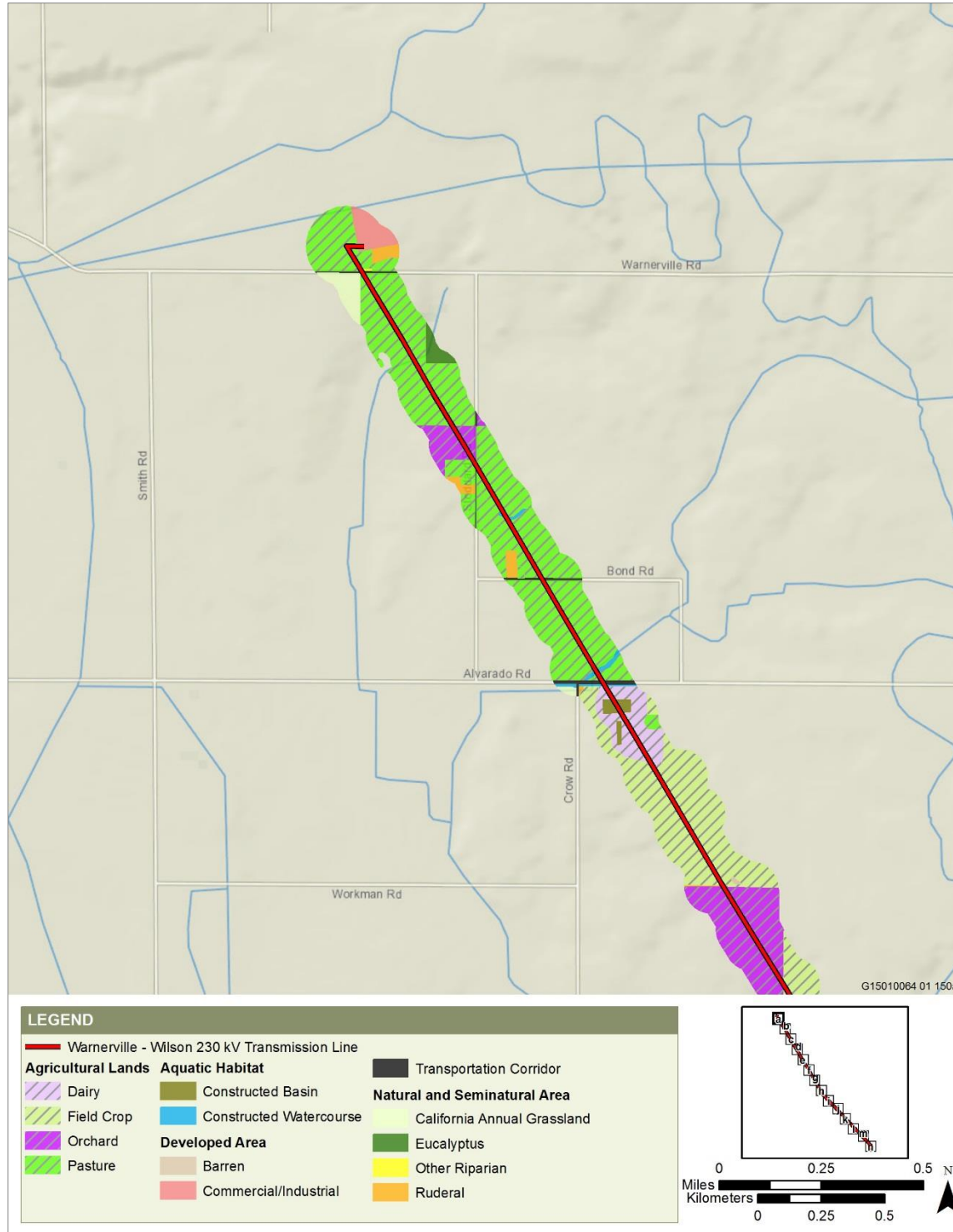
**Figure H-30 Plant Communities and Land Cover Types in the Habitat Study Area Site 7 – Le Grand Junction/Sandy Mush Road, Wilson – Dairyland (idle) 115 kV Power Line**





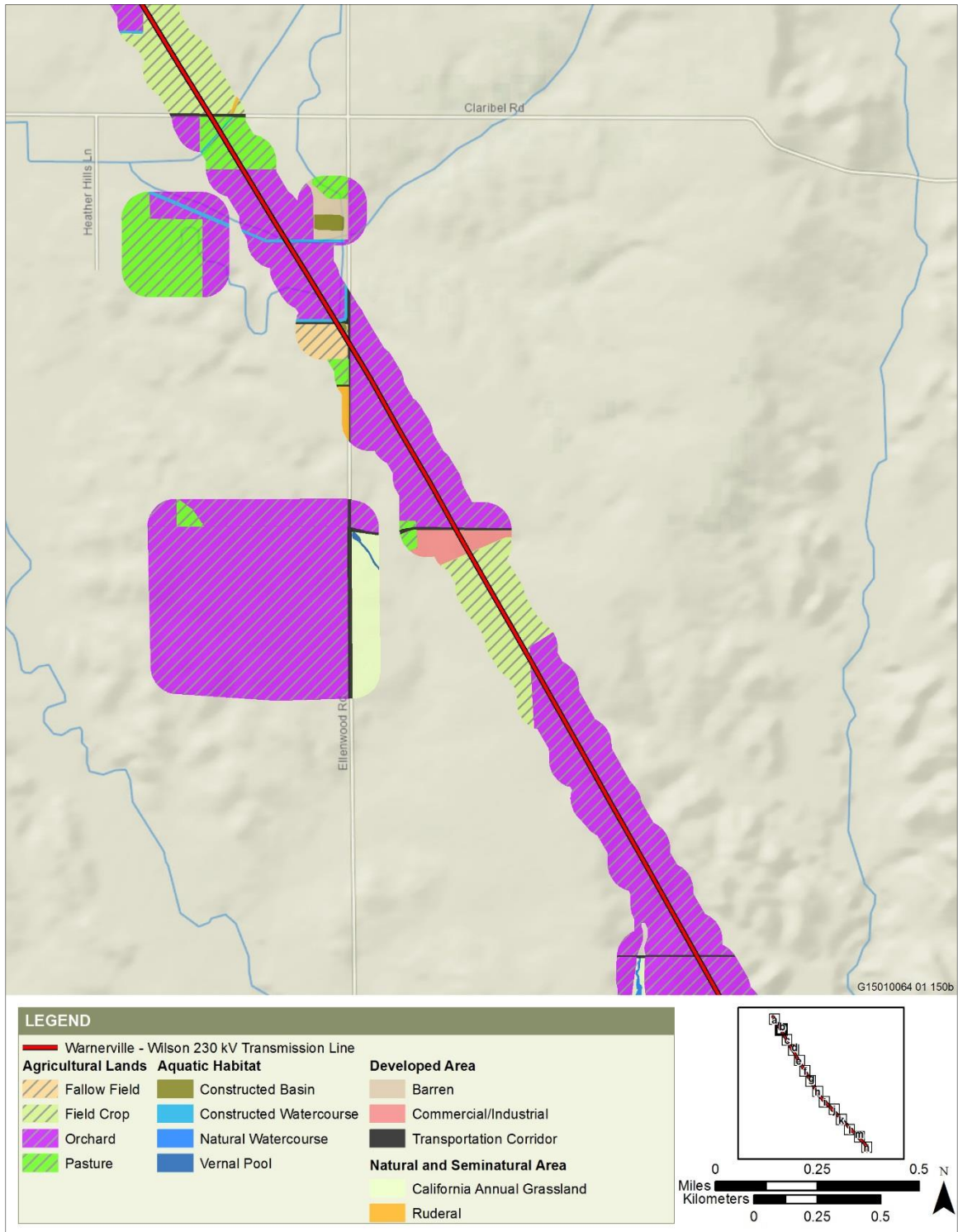
Sources: Land cover generated using ESRI ArcGIS versions 10.4 from data gathered during field surveys and aerial photo interpretation using NAIP and Google Earth aerial imagery dated 2014; Authority and FRA, 2016a  
FINAL – DECEMBER 2016

**Figure H-31 Plant Communities and Land Cover Types in the Habitat Study Area Site 7 – Le Grand Junction/Sandy Mush Road, Wilson – Dairyland (idle) 115 kV Power Line**



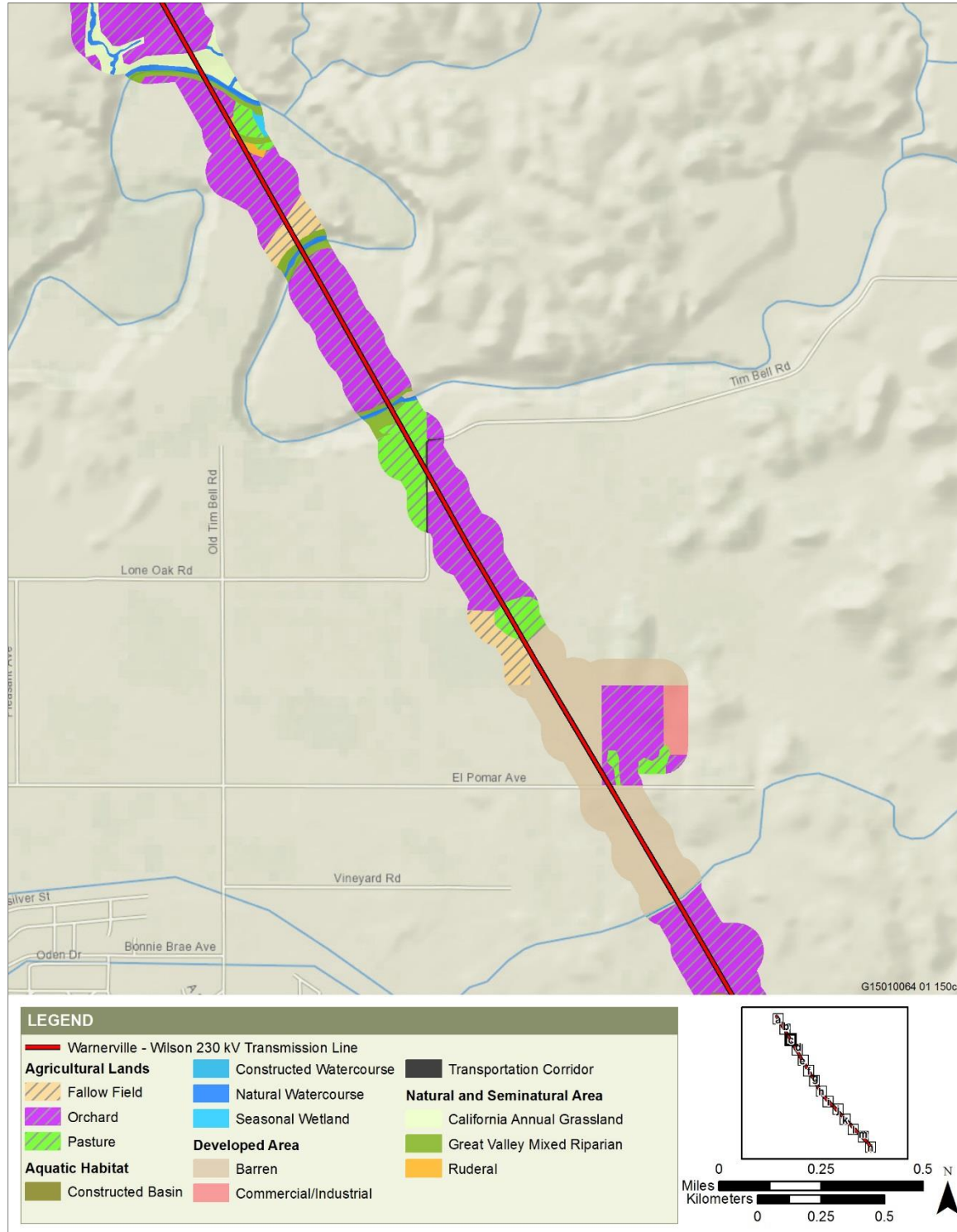
Sources: Land cover generated using ESRI ArcGIS versions 10.4 from data gathered during field surveys and aerial photo interpretation using NAIP and Google Earth aerial imagery dated 2014; Authority and FRA, 2016a  
FINAL – DECEMBER 2016

**Figure H-32 Plant Communities and Land Cover Types in the Habitat Study Area  
Site 7 – Le Grand Junction/Sandy Mush Road, Warnerville – Wilson 230  
kV Transmission Line**



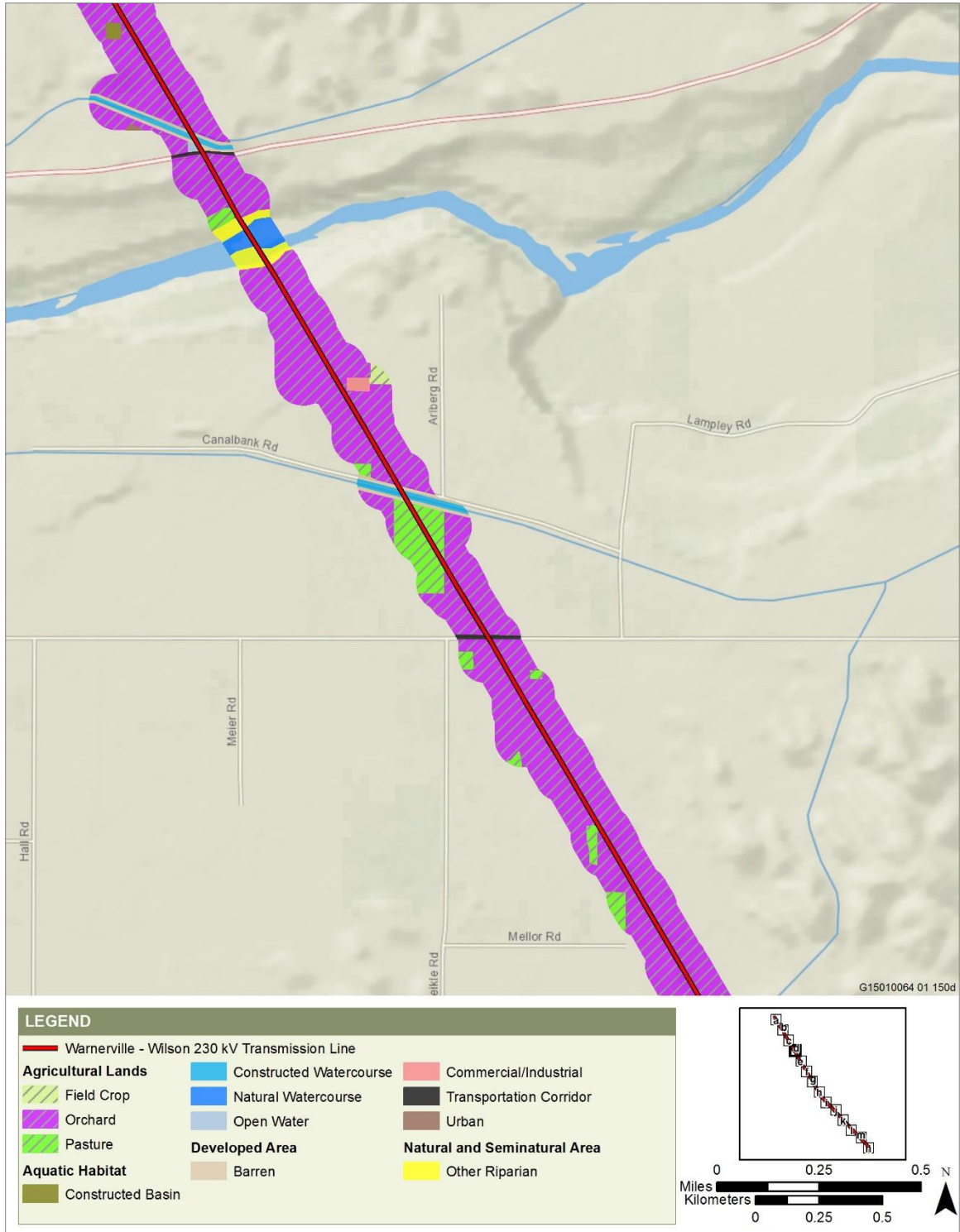
Sources: Land cover generated using ESRI ArcGIS versions 10.4 from data gathered during field surveys and aerial photo interpretation using NAIP and Google Earth imagery dated 2014; Authority and FRA, 2016a  
FINAL – DECEMBER 2016

**Figure H-33 Plant Communities and Land Cover Types in the Habitat Study Area Site 7 – Le Grand Junction/Sandy Mush Road, Warnerville – Wilson 230 kV Transmission Line**



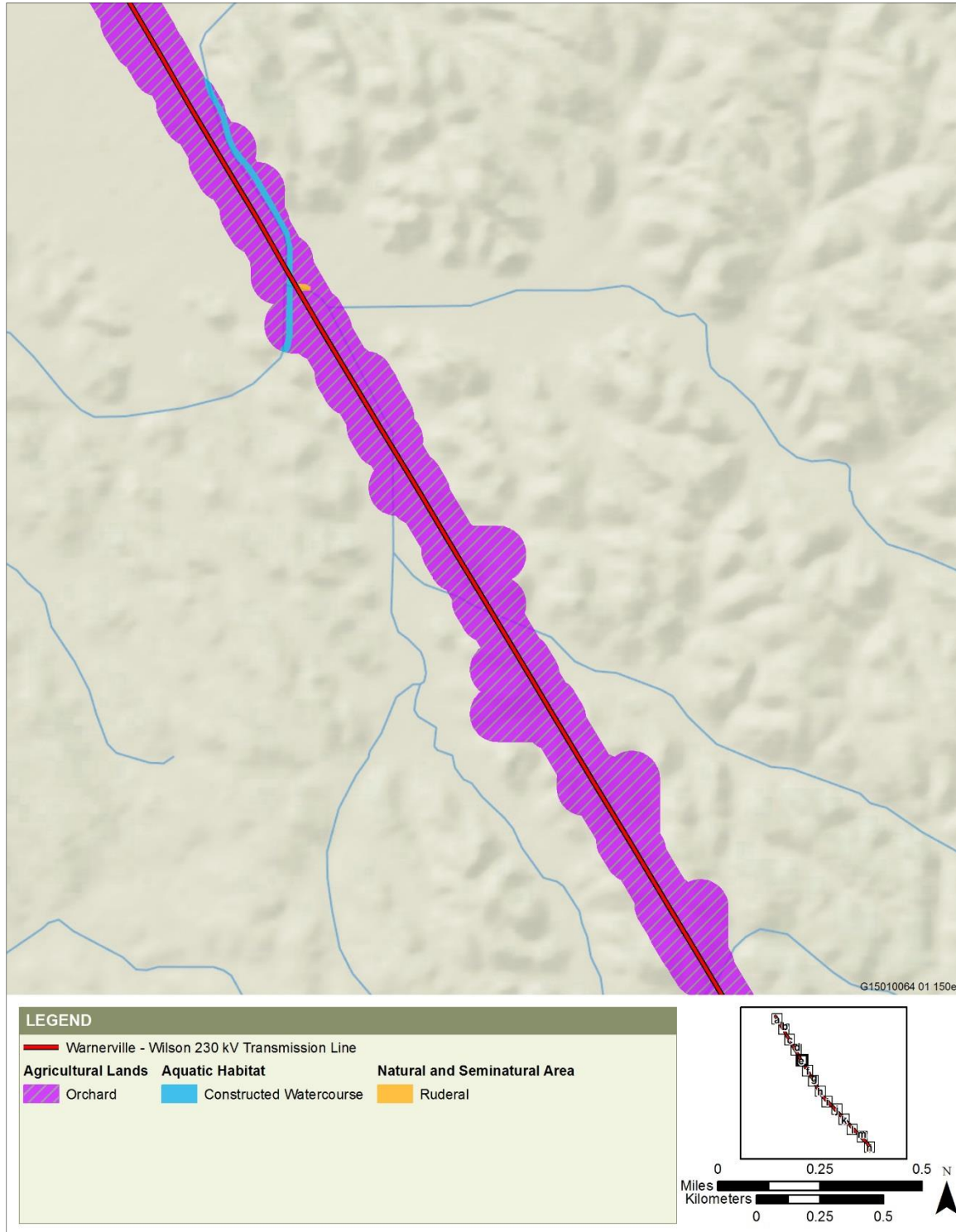
Sources: Land cover generated using ESRI ArcGIS versions 10.4 from data gathered during field surveys and aerial photo interpretation using NAIP and Google Earth aerial imagery dated 2014; Authority and FRA, 2016a  
FINAL – DECEMBER 2016

**Figure H-34 Plant Communities and Land Cover Types in the Habitat Study Area  
Site 7 – Le Grand Junction/Sandy Mush Road, Warnerville – Wilson 230 kV  
Transmission Line**



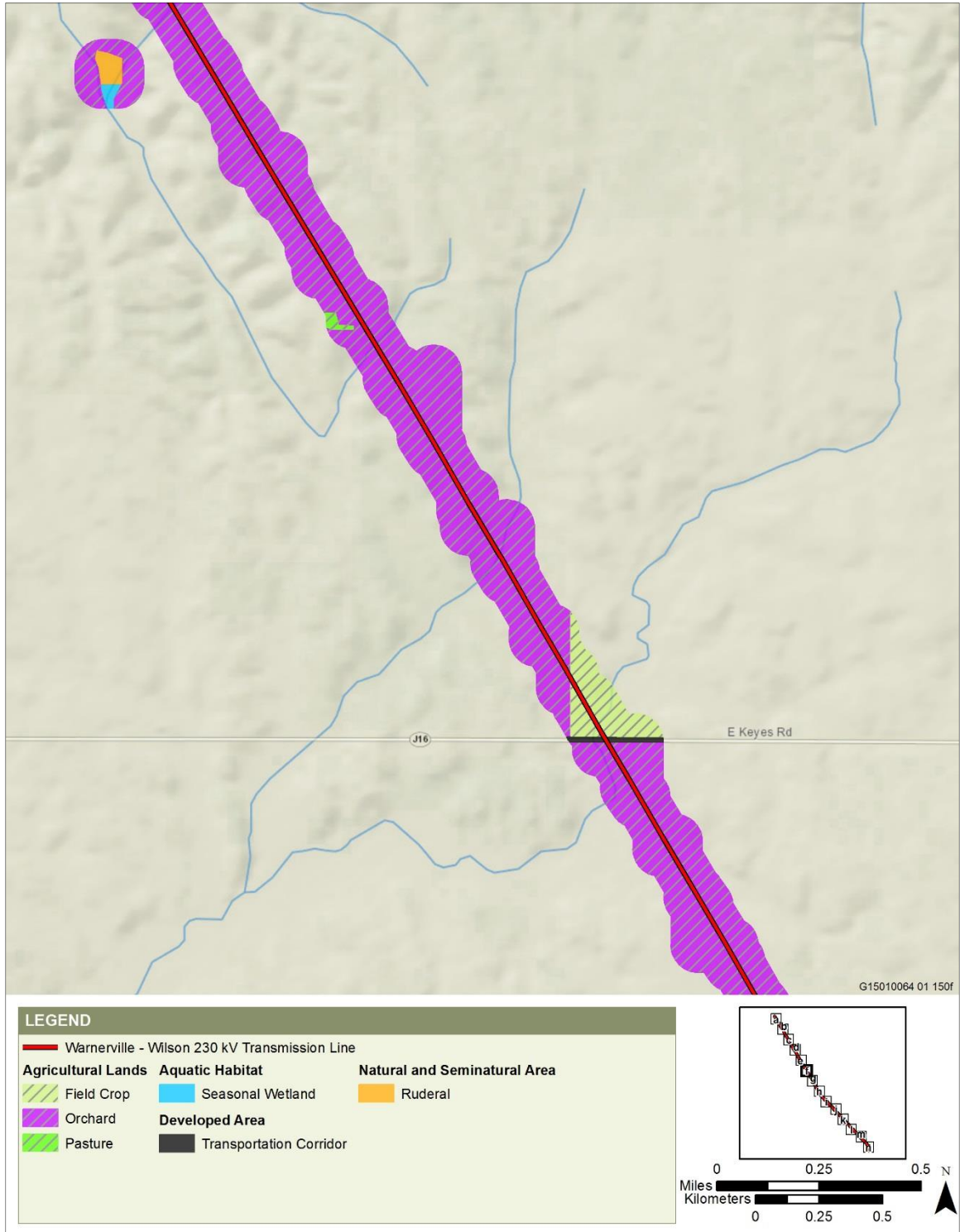
Sources: Land cover generated using ESRI ArcGIS versions 10.4 from data gathered during field surveys and aerial photo interpretation using NAIP and Google Earth aerial imagery dated 2014; Authority and FRA, 2016a  
 FINAL – DECEMBER 2016

**Figure H-35 Plant Communities and Land Cover Types in the Habitat Study Area Site 7 – Le Grand Junction/Sandy Mush Road, Warnerville – Wilson 230 kV Transmission Line**



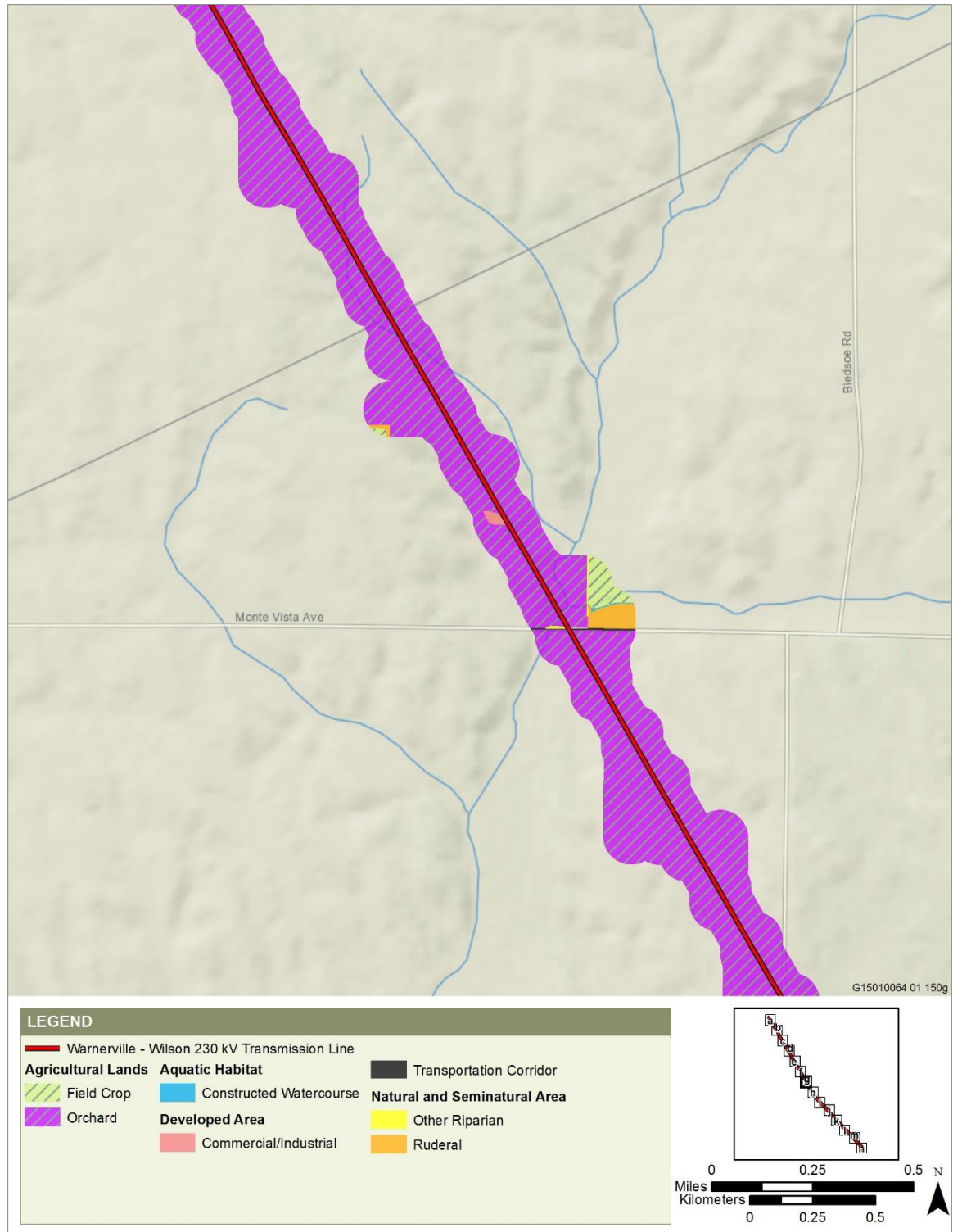
Sources: Land cover generated using ESRI ArcGIS versions 10.4 from data gathered during field surveys and aerial photo interpretation using NAIP and Google Earth aerial imagery dated 2014; Authority and FRA, 2016a  
FINAL – DECEMBER 2016

**Figure H-36 Plant Communities and Land Cover Types in the Habitat Study Area  
Site 7 – Le Grand Junction/Sandy Mush Road, Warnerville – Wilson 230 kV  
Transmission Line**



Sources: Land cover generated using ESRI ArcGIS versions 10.4 from data gathered during field surveys and aerial photo interpretation using NAIP and Google Earth aerial imagery dated 2014; Authority and FRA, 2016a  
FINAL – DECEMBER 2016

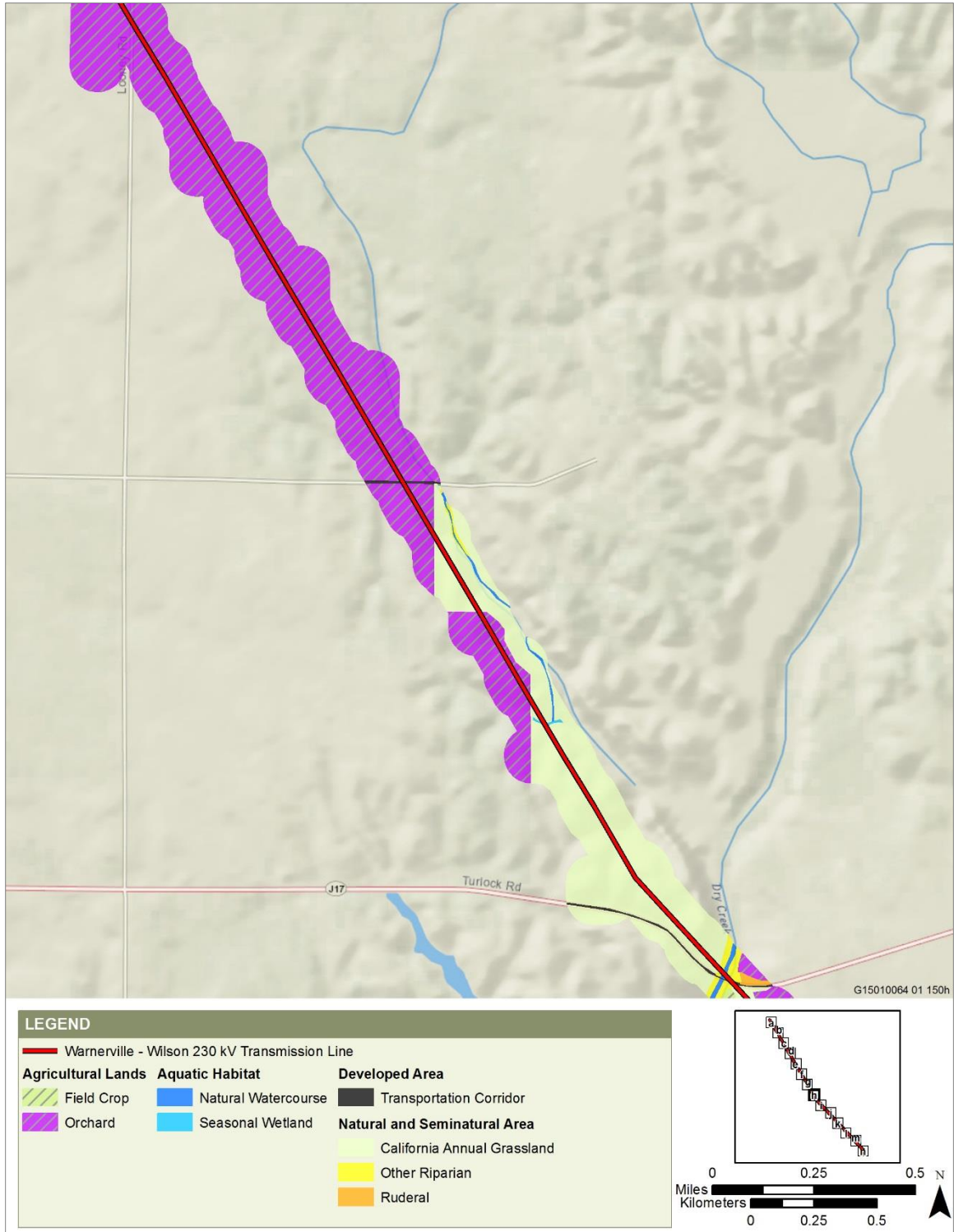
**Figure H-37 Plant Communities and Land Cover Types in the Habitat Study Area  
Site 7 – Le Grand Junction/Sandy Mush Road, Warnerville – Wilson 230 kV  
Transmission Line**



Sources: Land cover generated using ESRI ArcGIS versions 10.4 from data gathered during field surveys and aerial photo interpretation using NAIP and Google Earth aerial imagery dated 2014; Authority and FRA, 2016a  
FINAL – DECEMBER 2016

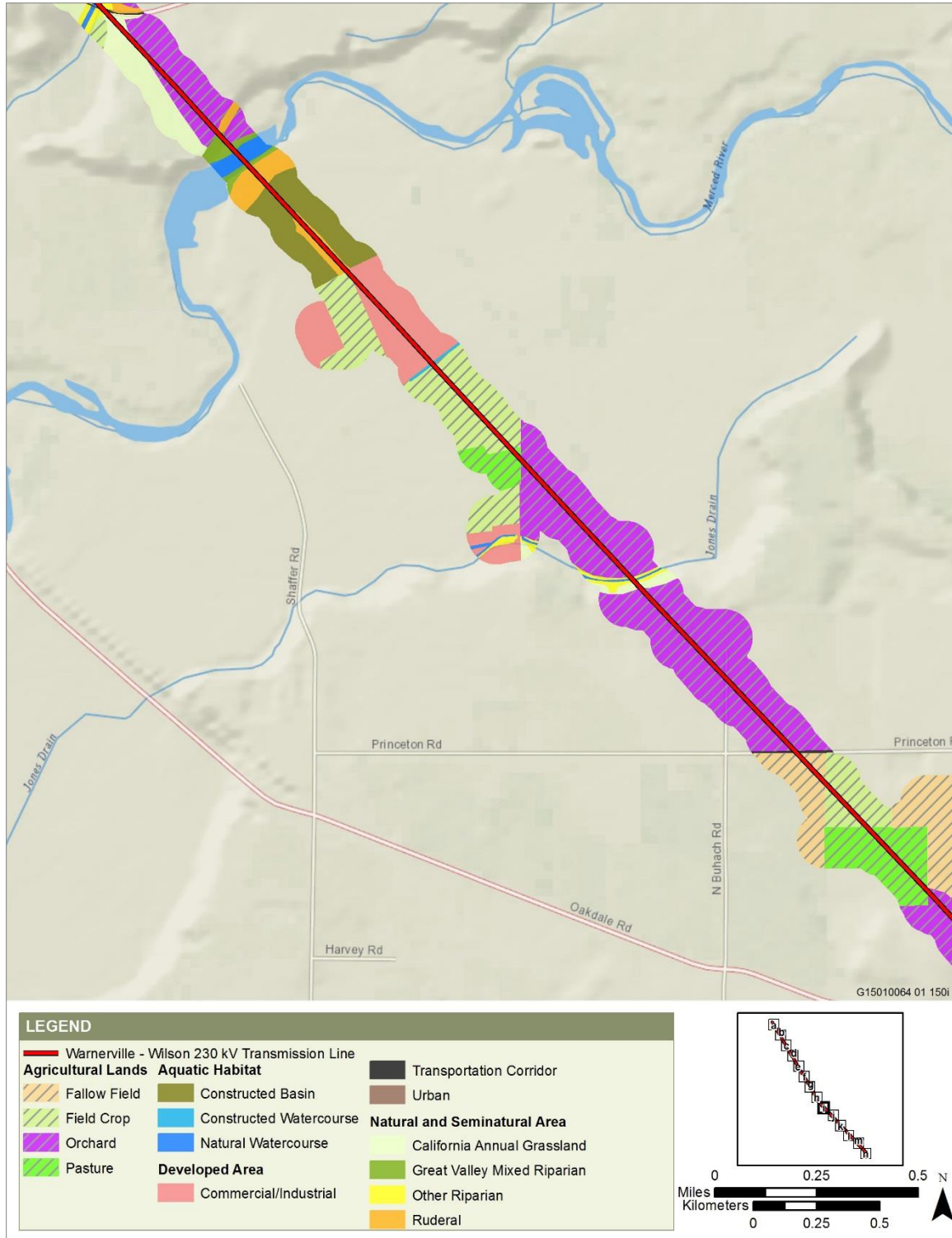
**Figure H-38 Plant Communities and Land Cover Types in the Habitat Study Area  
Site 7 – Le Grand Junction/Sandy Mush Road, Warnerville – Wilson 230 kV  
Transmission Line**





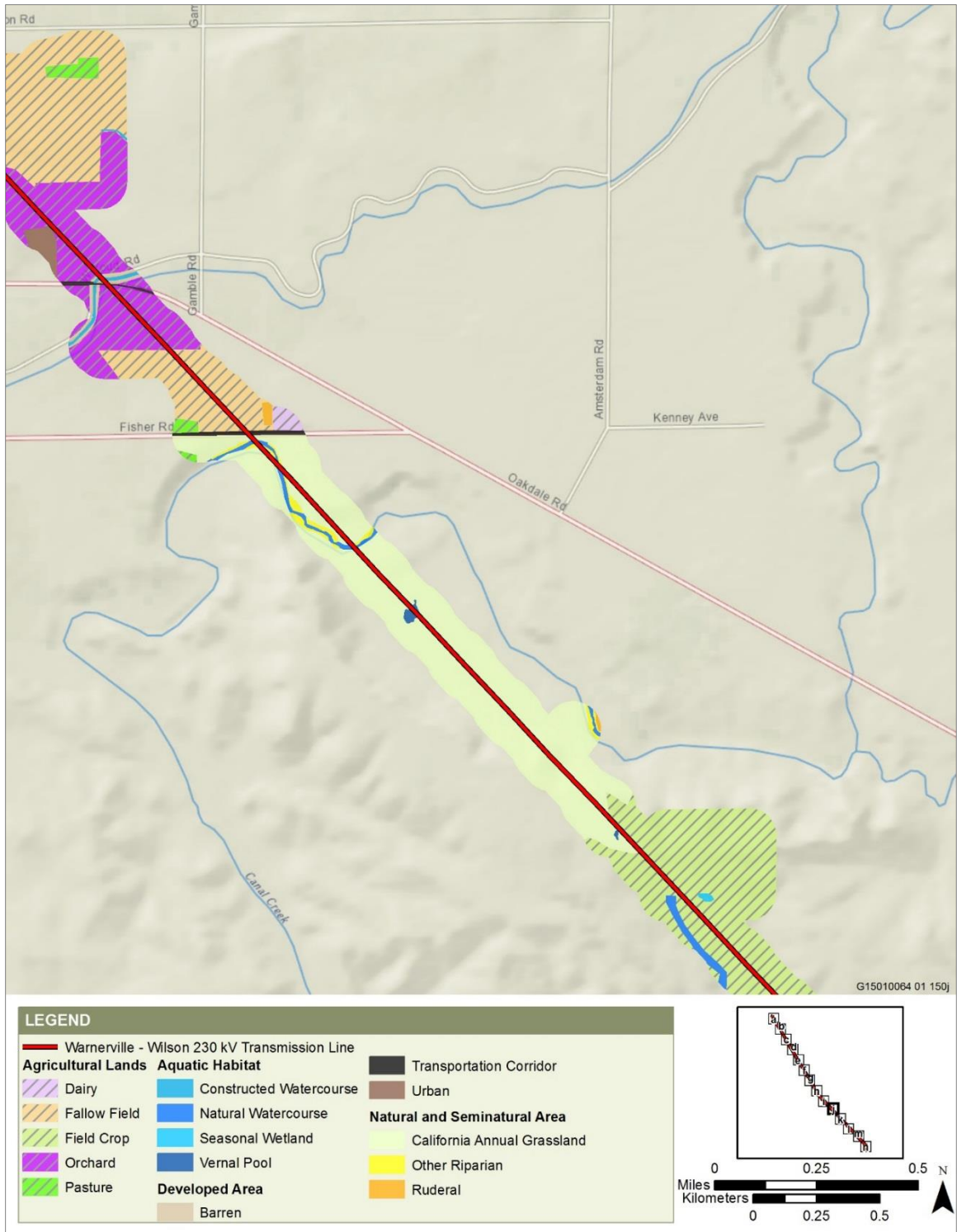
Sources: Land cover generated using ESRI ArcGIS versions 10.4 from data gathered during field surveys and aerial photo interpretation using NAIP and Google Earth aerial imagery dated 2014; Authority and FRA, 2016a  
FINAL - DECEMBER 2016

**Figure H-39 Plant Communities and Land Cover Types in the Habitat Study Area  
Site 7 - Le Grand Junction/Sandy Mush Road, Warnerville - Wilson 230 kV  
Transmission Line**



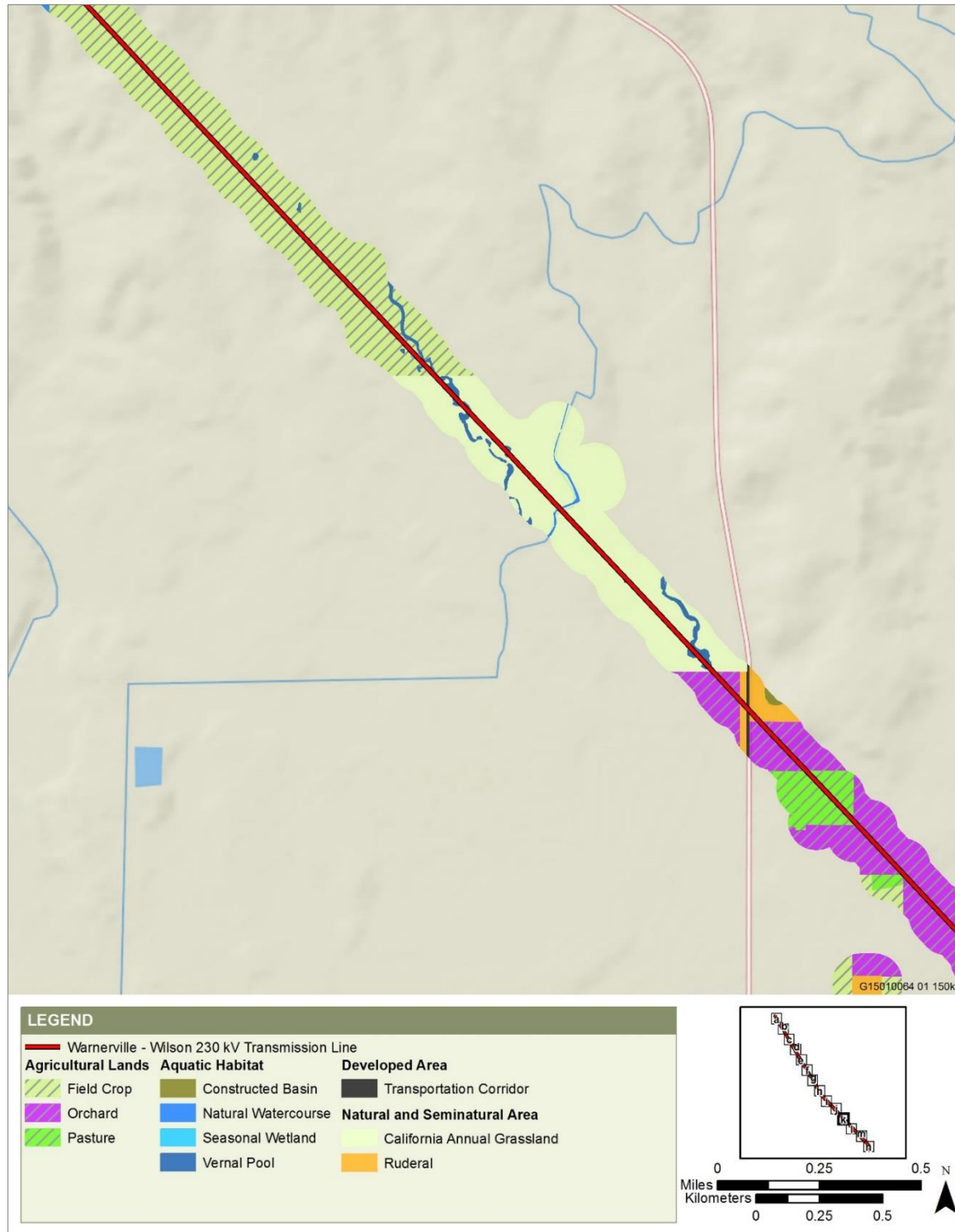
Sources: Land cover generated using ESRI ArcGIS versions 10.4 from data gathered during field surveys and aerial photo interpretation using NAIP and Google Earth aerial imagery dated 2014; Authority and FRA, 2016a  
FINAL – DECEMBER 2016

**Figure H-40 Plant Communities and Land Cover Types in the Habitat Study Area Site 7 – Le Grand Junction/Sandy Mush Road, Warnerville – Wilson 230 kV Transmission Line**



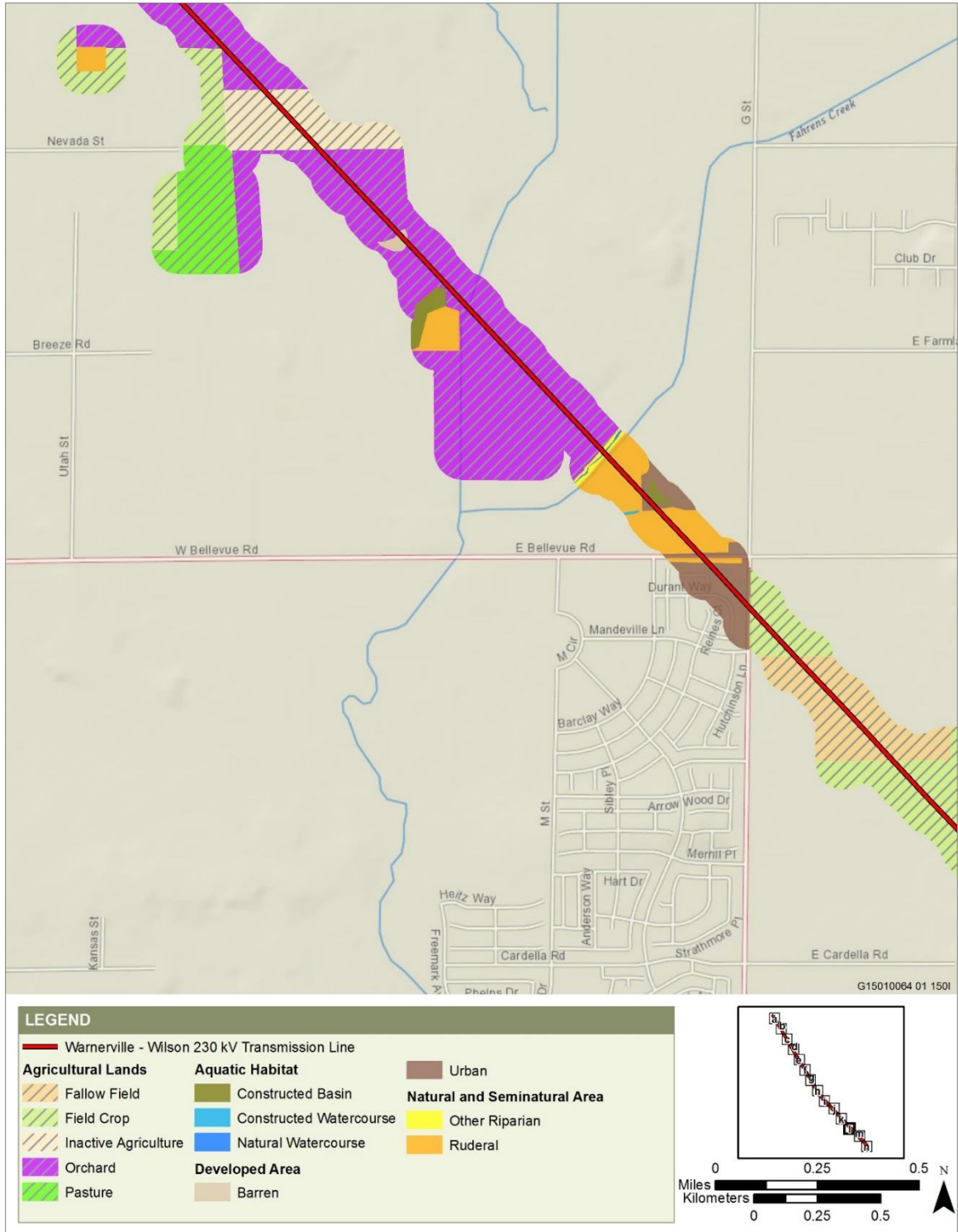
Sources: Land cover generated using ESRI ArcGIS versions 10.4 from data gathered during field surveys and aerial photo interpretation using NAIP and Google Earth aerial imagery dated 2014; Authority and FRA, 2016a  
 FINAL – DECEMBER 2016

**Figure H-41 Plant Communities and Land Cover Types in the Habitat Study Area Site 7 – Le Grand Junction/Sandy Mush Road, Warnerville – Wilson 230 kV Transmission Line**



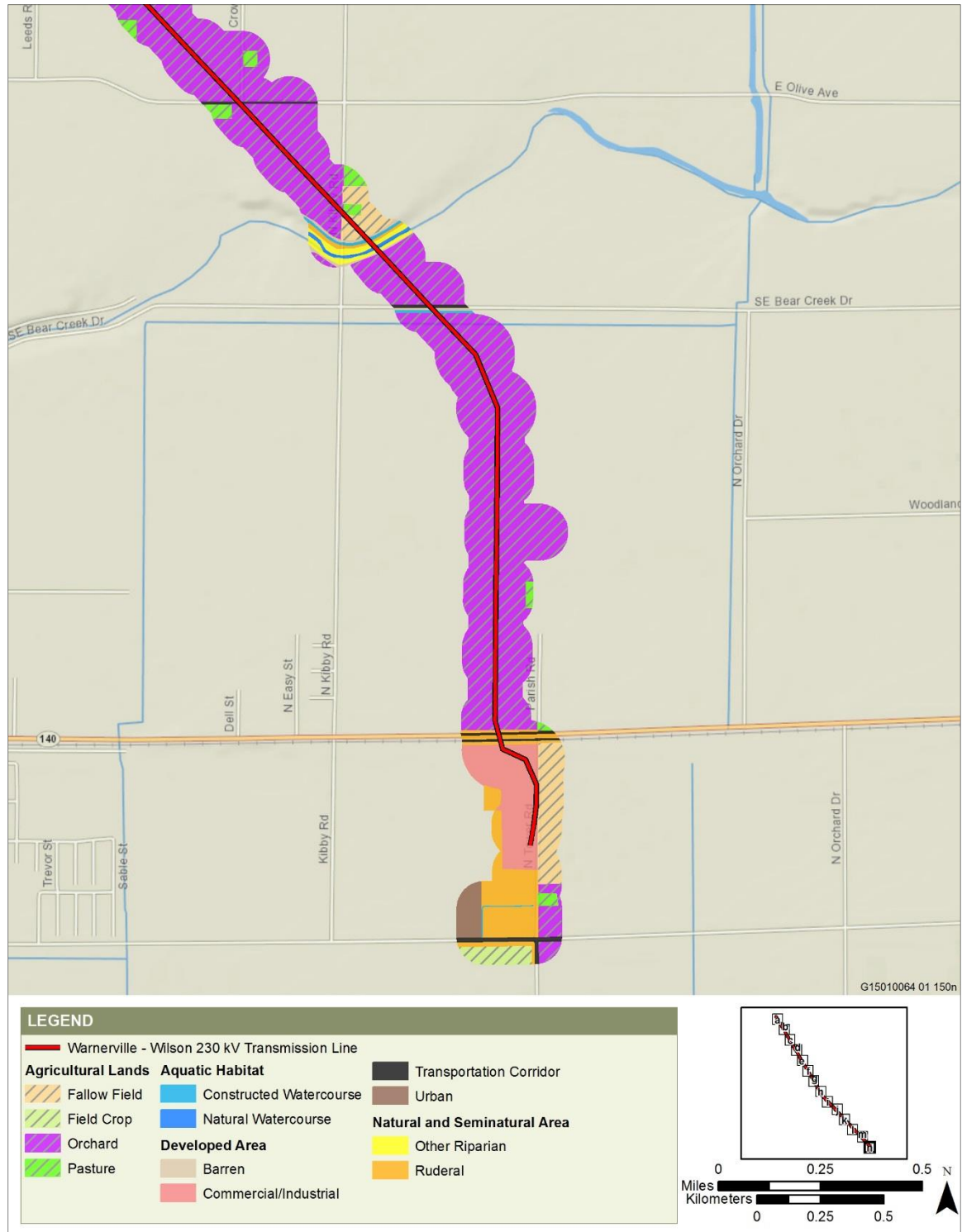
Sources: Land cover generated using ESRI ArcGIS versions 10.4 from data gathered during field surveys and aerial photo interpretation using NAIP and Google Earth aerial imagery dated 2014; Authority and FRA, 2016a  
FINAL – DECEMBER 2016

**Figure H-42 Plant Communities and Land Cover Types in the Habitat Study Area  
Site 7 – Le Grand Junction/Sandy Mush Road, Warnerville – Wilson 230 kV  
Transmission Line**



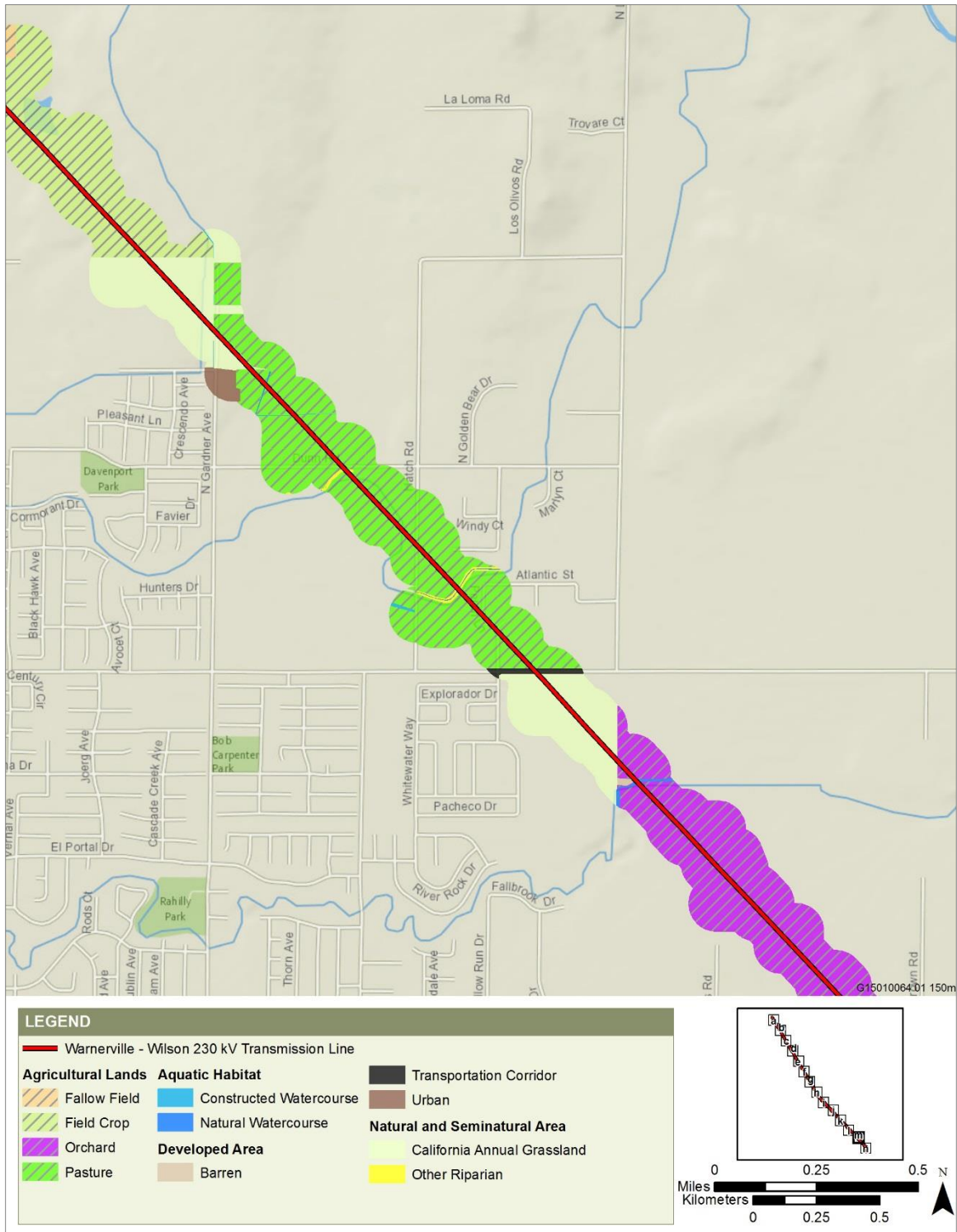
Sources: Land cover generated using ESRI ArcGIS versions 10.4 from data gathered during field surveys and aerial photo interpretation using NAIP and Google Earth aerial imagery dated 2014; Authority and FRA, 2016a  
FINAL – DECEMBER 2016

**Figure H-43 Plant Communities and Land Cover Types in the Habitat Study Area  
Site 7 – Le Grand Junction/Sandy Mush Road, Warnerville – Wilson 230 kV  
Transmission Line**



Sources: Land cover generated using ESRI ArcGIS versions 10.4 from data gathered during field surveys and aerial photo interpretation using NAIP and Google Earth aerial imagery dated 2014; Authority and FRA, 2016a  
FINAL – DECEMBER 2016

**Figure H-44 Plant Communities and Land Cover Types in the Habitat Study Area  
Site 7 – Le Grand Junction/Sandy Mush Road, Warnerville – Wilson 230 kV  
Transmission Line**



Sources: Land cover generated using ESRI ArcGIS versions 10.4 from data gathered during field surveys and aerial photo interpretation using NAIP and Google Earth aerial imagery dated 2014; Authority and FRA, 2016a  
FINAL – DECEMBER 2016

**Figure H-45 Plant Communities and Land Cover Types in the Habitat Study Area Site 7 – Le Grand Junction/Sandy Mush Road, Warnerville – Wilson 230 kV Transmission Line**