

California High-Speed Rail Authority

Bakersfield to Palmdale

Project Section

Draft Project Environmental Impact Report/Environmental Impact Statement

Appendix 3.2-B: Traffic Mitigation Locations

January 2020



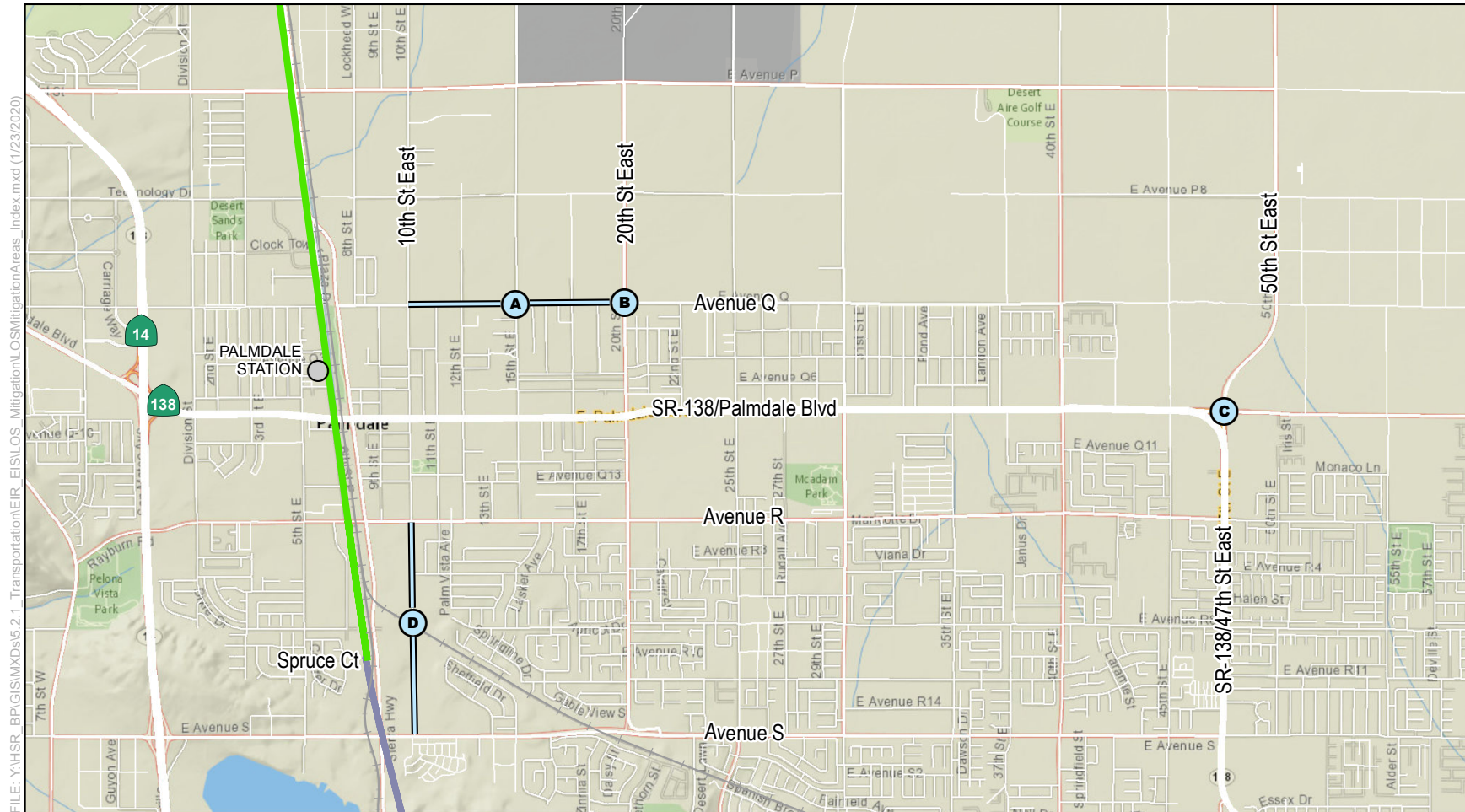
The environmental review, consultation, and other actions required by applicable Federal environmental laws for this project are being or have been carried out by the State of California pursuant to 23 U.S.C. 327 and a Memorandum of Understanding dated July 23, 2019, and executed by the Federal Railroad Administration and the State of California.

This page intentionally left blank

APPENDIX 3.2-B: TRAFFIC MITIGATION LOCATIONS

The following maps depict the locations of the intersection and roadway widening improvements that are available for consideration to address traffic delay impacts under NEPA. Refer to Mitigation Measure TRAN-MM#3 in Section 3.2 Transportation for additional details of these improvements. The figures in this appendix depict the locations of the intersection and roadway widening improvements for purposes of analyzing the potential environmental effects of these improvements.

This page intentionally left blank



FILE: Y:\HSR_BP\GIS\MXDs\5.2.1_Transportation\ER_EIS\LOS_Mitigation\LOS\MitigationAreas_Index.mxd (1/23/2020)

PRELIMINARY DRAFT/SUBJECT TO CHANGE - HSR ALIGNMENT IS NOT DETERMINED
SOURCE: National Geographic/Esri (2018); CHSRA (1/2020)

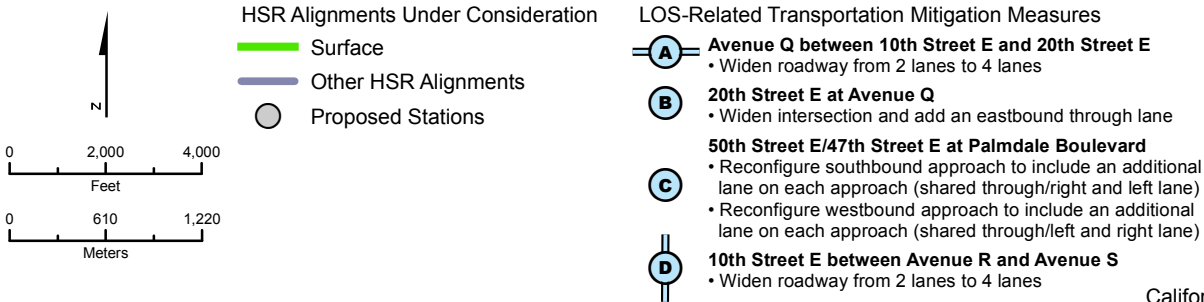
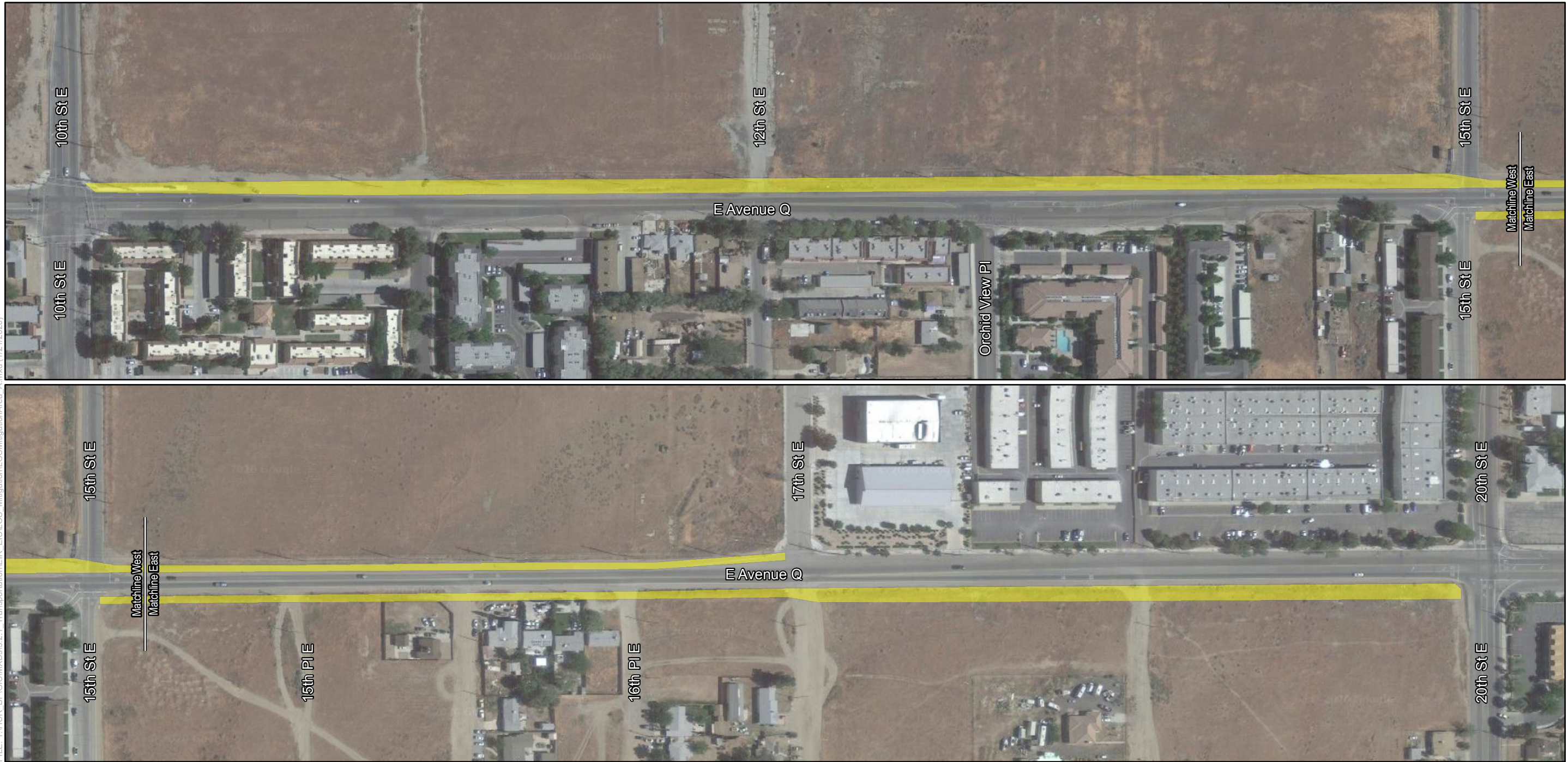


Figure 1
Impacts of LOS-Related Transportation Mitigation Measures

FILE: Y:\HSR_BP\GIS\MXDs\5.2.1_Transportation\ER_EIS\LOS_Mitigation\LOS_MitigationArea_A.mxd (1/21/2020)



PRELIMINARY DRAFT/SUBJECT TO CHANGE - HSR ALIGNMENT IS NOT DETERMINED
SOURCE: Google Maps (2018); CHSRA (1/2020)

- Potential Areas of Improvement
- Widen roadway from 2 lanes to 4 lanes

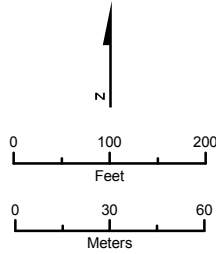
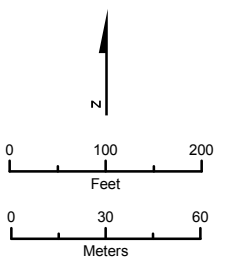


Figure 2
Impacts of LOS-Related Transportation
Mitigation Measures
Avenue Q between 10th Street E and 20th Street E

FILE: Y:\HSR_BP\GIS\MXDs\5.2.1_Transportation\EIR_EIS\LOS_Mitigation\LOS_MitigationArea_BandC.mxd (1/21/2020)



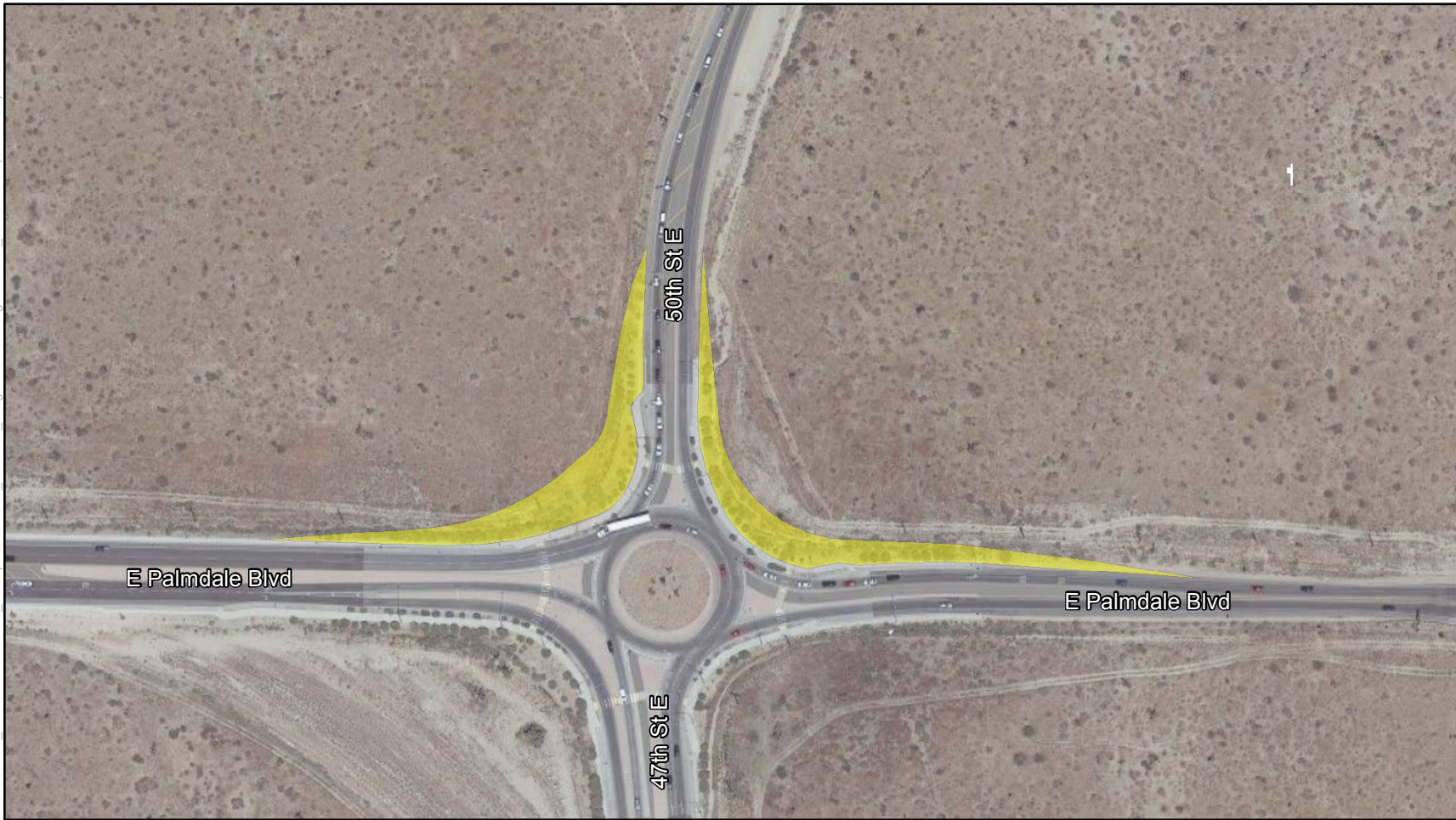
PRELIMINARY DRAFT/SUBJECT TO CHANGE - HSR ALIGNMENT IS NOT DETERMINED
 SOURCE: Google Maps (2018); CHSRA (1/2020)



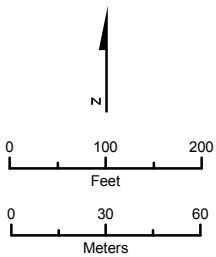
- Potential Areas of Improvement
- Widen intersection and add an eastbound through lane

Figure 3
 Impacts of LOS-Related Transportation
 Mitigation Measures
 20th Street E at Avenue Q

FILE: Y:\HSR_BP\GIS\IMXD\5.2.1_Transportation\EIR_EIS\LOS_Mitigation\LOS\MitigationArea_BandC.mxd (1/20/2020)



PRELIMINARY DRAFT/SUBJECT TO CHANGE - HSR ALIGNMENT IS NOT DETERMINED
 SOURCE: Google Maps (2018); CHSRA (1/2020)



Potential Areas of Improvement

- Reconfigure southbound approach to include an additional lane on each approach (shared through/right and left lane)
- Reconfigure westbound approach to include an additional lane on each approach (shared through/left and right lane)

Figure 4
 Impacts of LOS-Related Transportation
 Mitigation Measures
 50th Street E/47th Street E at Palmdale Boulevard



FILE: Y:\HSR_BP\GIS\MXDs\5.2.1_Transportation\ER_EIS\LOS_Mitigation\LOS_MitigationArea_D.mxd (1/21/2020)

PRELIMINARY DRAFT/SUBJECT TO CHANGE - HSR ALIGNMENT IS NOT DETERMINED
SOURCE: Google Maps (2018); CHSRA (1/2020)

- Potential Areas of Improvement
- Widen roadway from 2 lanes to 4 lanes

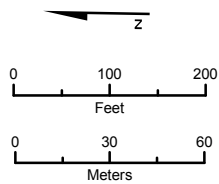


Figure 5
Impacts of LOS-Related Transportation
Mitigation Measures
10th Street E between Avenue R and Avenue S

This page intentionally left blank