

California High-Speed Rail Authority

# ***Bakersfield to Palmdale*** ***Project Section***

## **Draft Environmental Impact Report/Environmental Impact Statement**

### **Appendix 3.12-A: Socioeconomics and Communities Figures and Tables**

**January 2020**



The environmental review, consultation, and other actions required by applicable Federal environmental laws for this project are being or have been carried out by the State of California pursuant to 23 U.S.C. 327 and a Memorandum of Understanding dated July 23, 2019, and executed by the Federal Railroad Administration and the State of California.

**This page intentionally left blank**

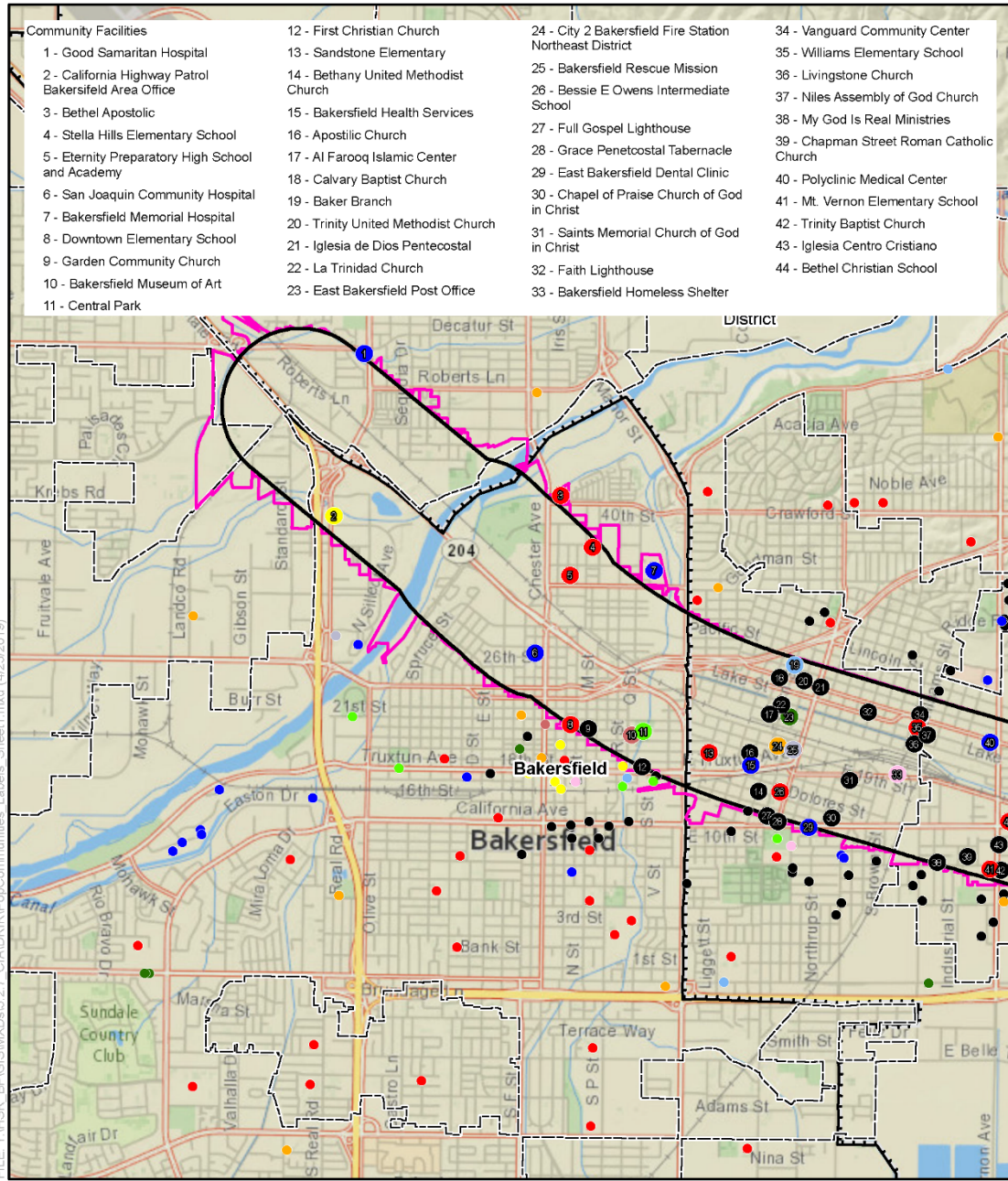
## **APPENDIX 3.12-A: SOCIOECONOMICS AND COMMUNITIES FIGURES AND TABLES**

This appendix contains detailed maps and tables in support of the affected environment descriptions in Section 3.12, Socioeconomics and Communities. Specifically, this appendix contains the following figures and tables:

- Figure 3.12-A-1: Community Facilities (13 sheets)
- Figure 3.12-A-2: Economic Impacts Resource Study Area (1 sheet)
- Figure 3.12-A-3: Northeast Bakersfield (1 sheet)
- Figure 3.12-A-4: School Districts (1 sheet)
- Figure 3.12-A-5: Bikeways (9 sheets)
- Figure 3.12-A-6: Replacement Areas (1 sheet)
- Table 3.12-A-1: Community Facilities Within the Direct and Indirect Impacts Resource Study Areas for Population and Community Impacts (8 pages)
- Table 3.12-A-2: Existing and Proposed Bicycle Lanes (3 pages)

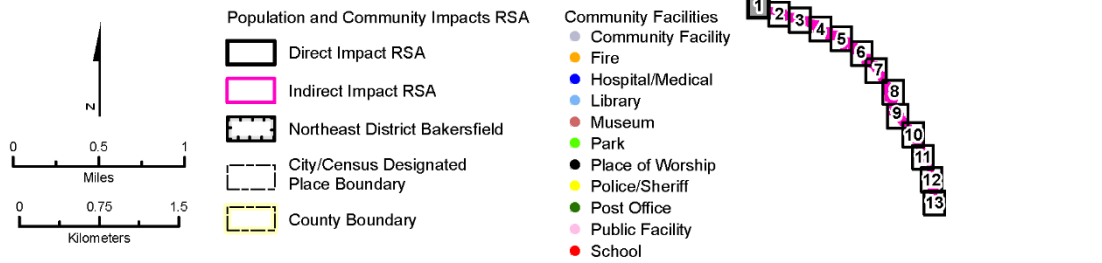
**This page intentionally left blank**





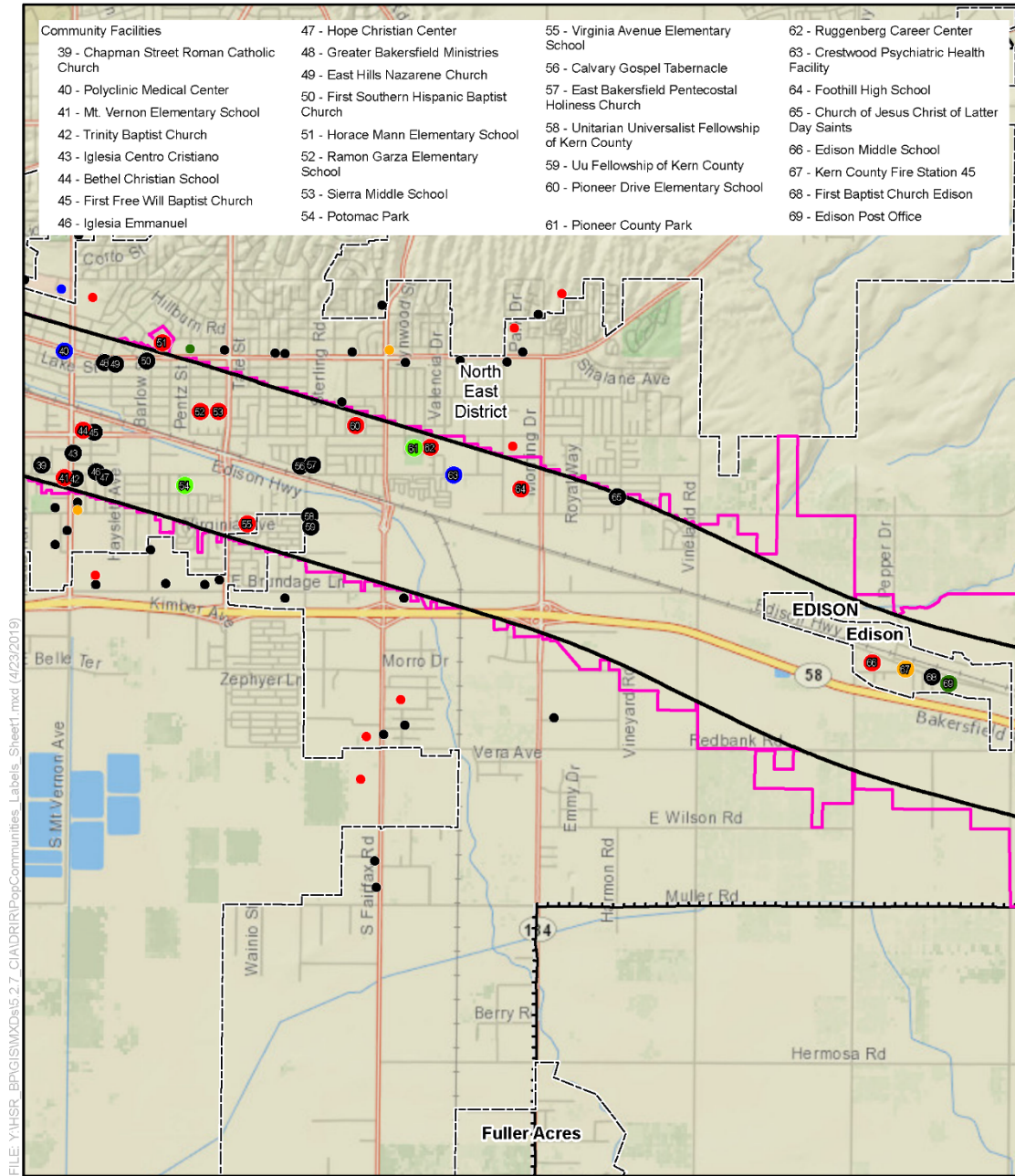
FILE: Y:\HSR\_BPG\GIS\MapDocs\5.2.7\_CIA\DRIR\PopCommunities\_Labels\_Sheet1.mxd (4/23/2016)

PRELIMINARY DRAFT/SUBJECT TO CHANGE - HSR ALIGNMENT IS NOT DETERMINED  
 SOURCE: National Geographic (2015); CHSRA (4/2016)



**Figure 3.12-A-1 Community Facilities**

(Sheet 1 of 13)



PRELIMINARY DRAFT/SUBJECT TO CHANGE - HSR ALIGNMENT IS NOT DETERMINED  
 SOURCE: National Geographic (2015); CHSRA (4/2016)

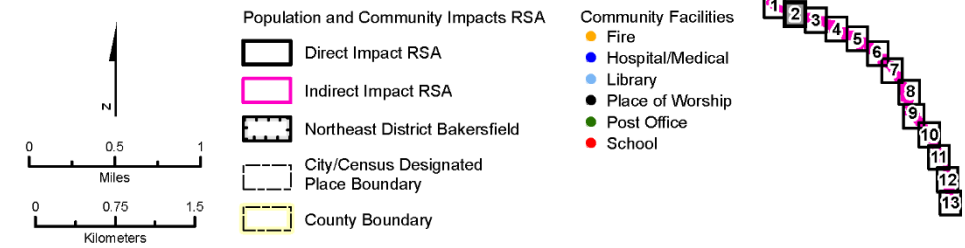
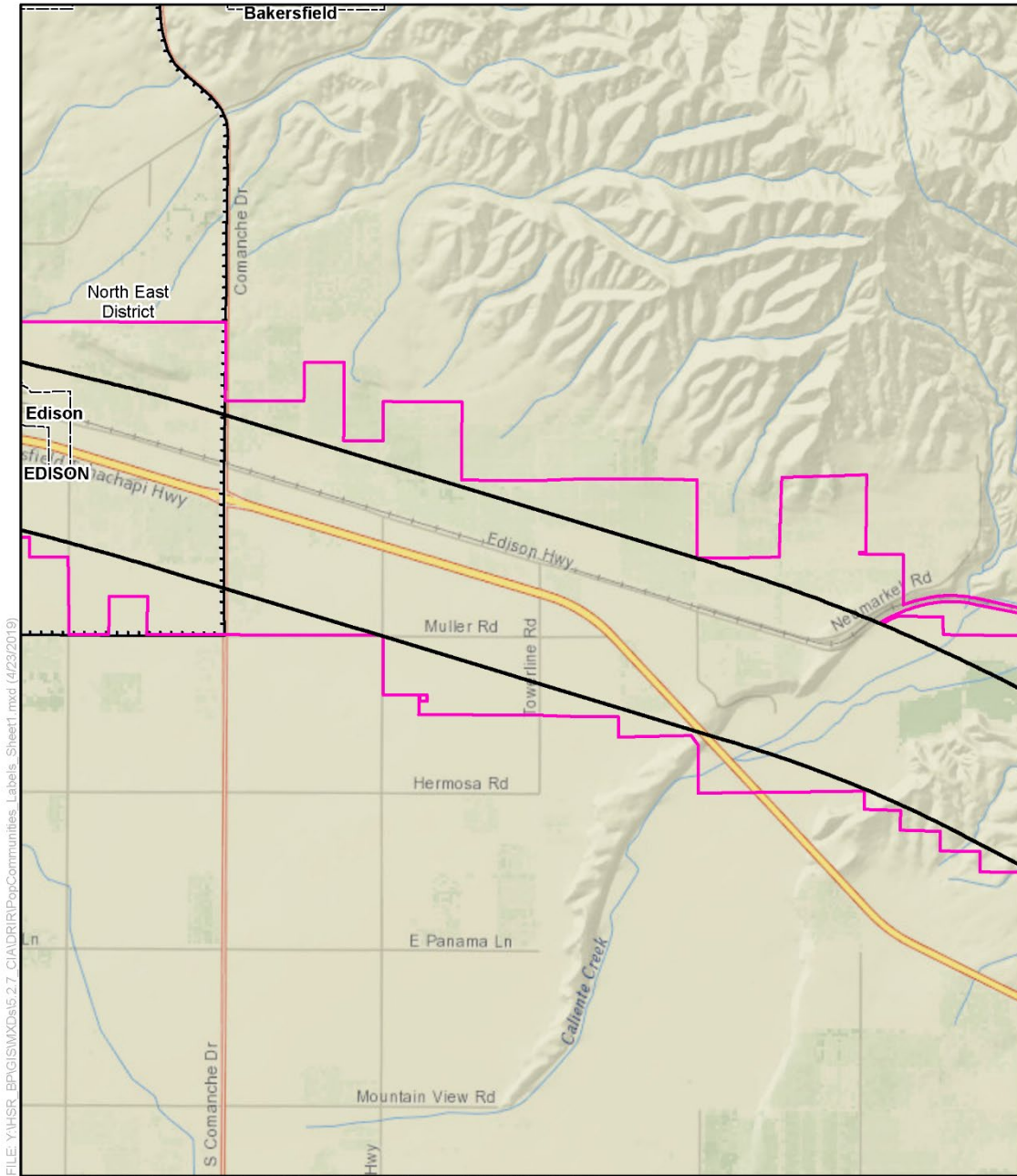


Figure 3.12-A-1 Community Facilities  
 (Sheet 2 of 13)





PRELIMINARY DRAFT/SUBJECT TO CHANGE - HSR ALIGNMENT IS NOT DETERMINED  
 SOURCE: National Geographic (2015); CHSRA (4/2016)

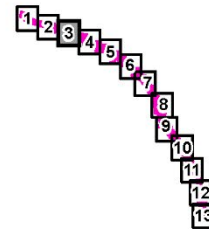
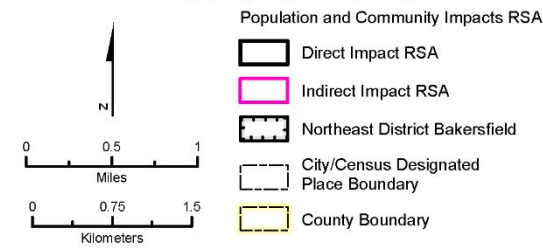
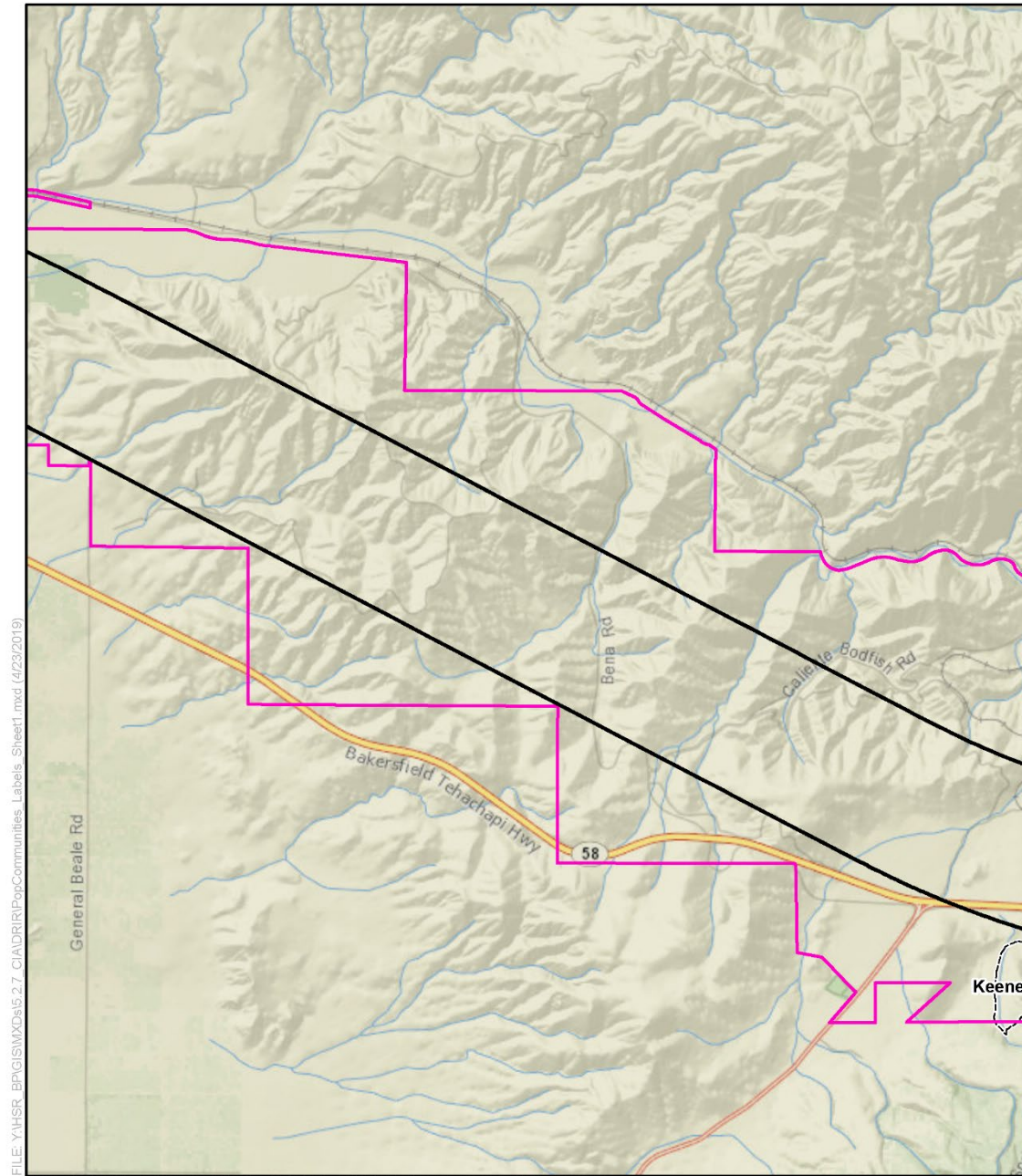


Figure 3.12-A-1 Community Facilities  
 (Sheet 3 of 13)



FILE: Y:\HSR\_BP\GIS\MXD\S.2.7\_CIA\DRIP\PopCommunities\_Labels\_Sheet1.mxd (4/23/2019)

PRELIMINARY DRAFT/SUBJECT TO CHANGE - HSR ALIGNMENT IS NOT DETERMINED  
 SOURCE: National Geographic (2015); CHSRA (4/2016)

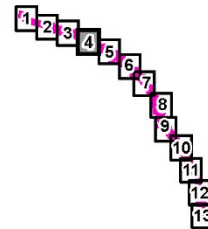
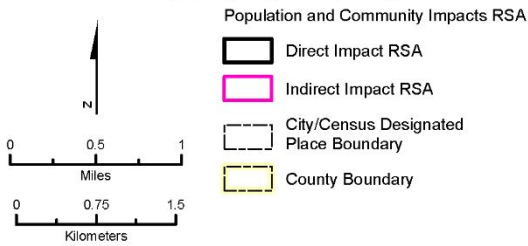
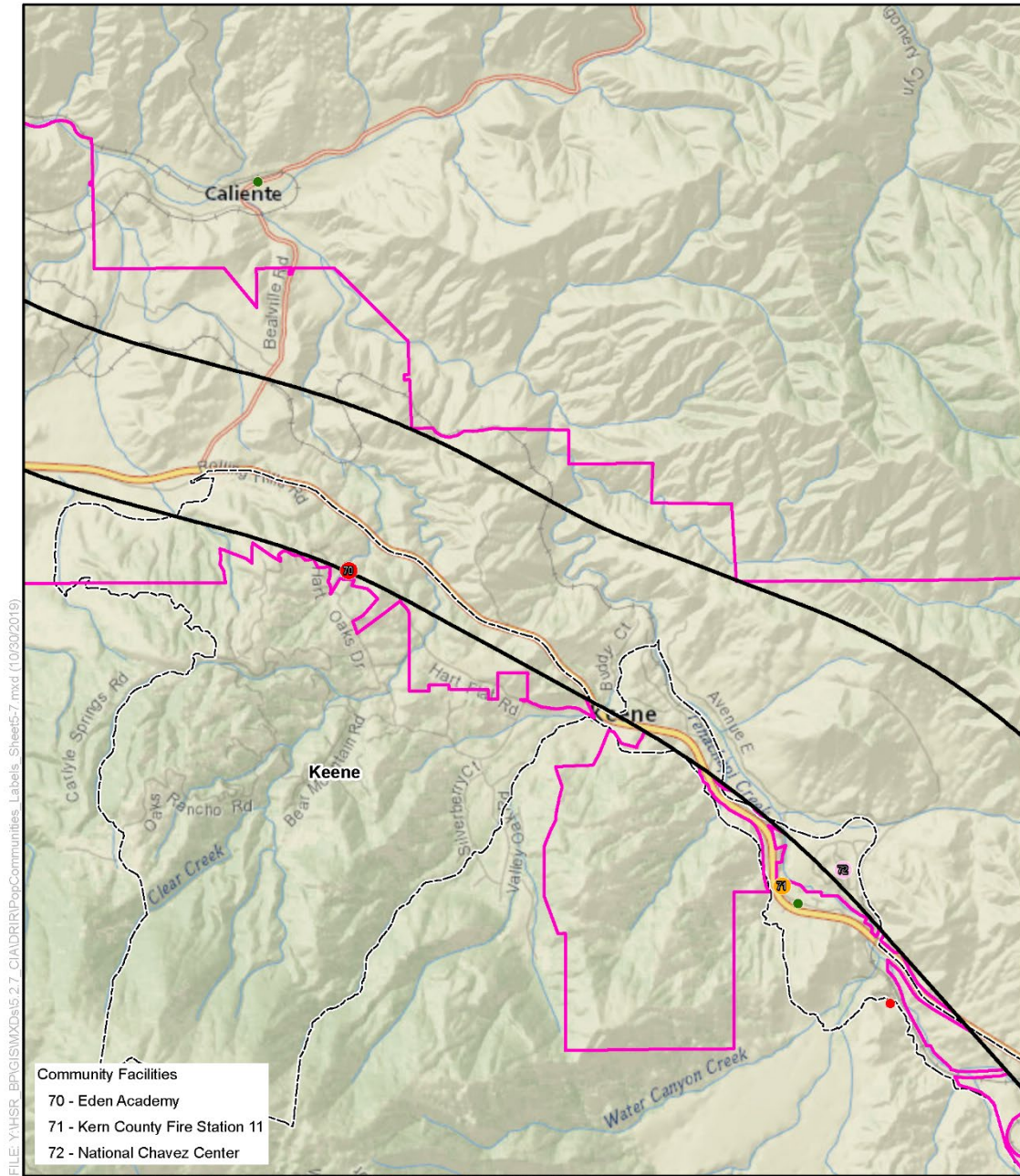
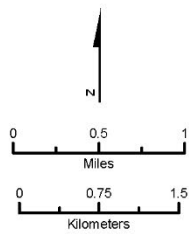


Figure 3.12-A-1 Community Facilities  
 (Sheet 4 of 13)





PRELIMINARY DRAFT/SUBJECT TO CHANGE - HSR ALIGNMENT IS NOT DETERMINED  
 SOURCE: National Geographic (2015); CHSRA (4/2016)



- Population and Community Impacts RSA**
- Direct Impact RSA
  - Indirect Impact RSA
  - City/Census Designated Place Boundary
  - County Boundary

- Community Facilities**
- Fire
  - Post Office
  - Public Facility
  - School

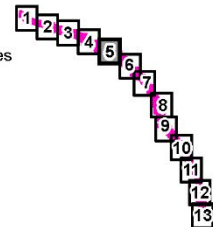
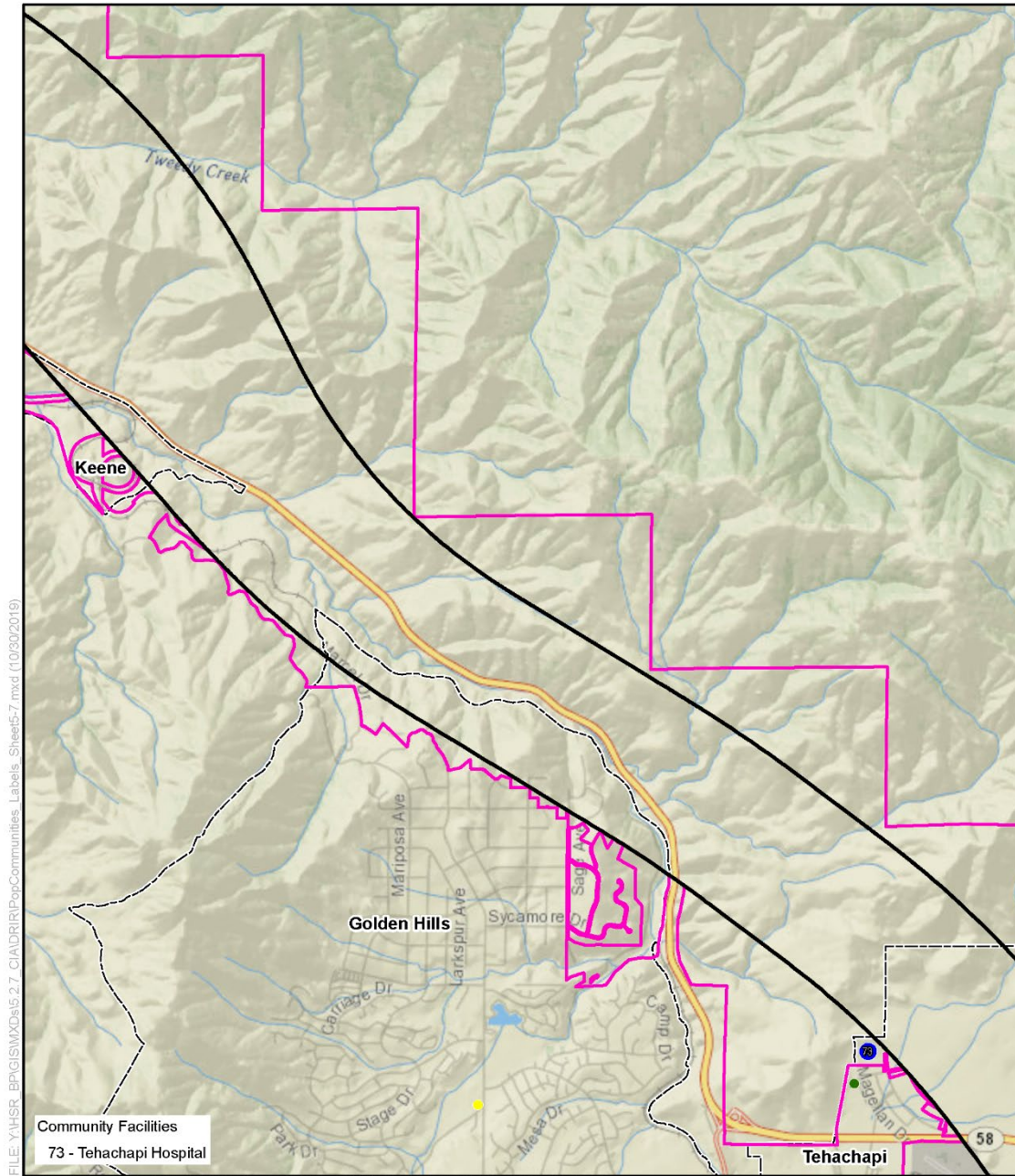


Figure 3.12-A-1 Community Facilities  
 (Sheet 5 of 13)



FILE: Y:\HSR\_BPG\GIS\MXD\S.2.7\_CIA\DRIP\PopCommunities\_Labels\_Sheet67.mxd (10/20/2016)

**Community Facilities**  
73 - Tehachapi Hospital

PRELIMINARY DRAFT/SUBJECT TO CHANGE - HSR ALIGNMENT IS NOT DETERMINED  
SOURCE: National Geographic (2015); CHSRA (4/2016)

  	<b>Population and Community Impacts RSA</b> Direct Impact RSA Indirect Impact RSA City/Census Designated Place Boundary County Boundary	<b>Community Facilities</b> Hospital/Medical Police/Sheriff Post Office
----------	---	--

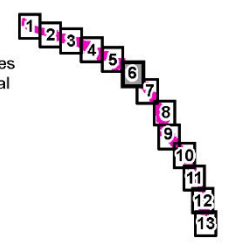
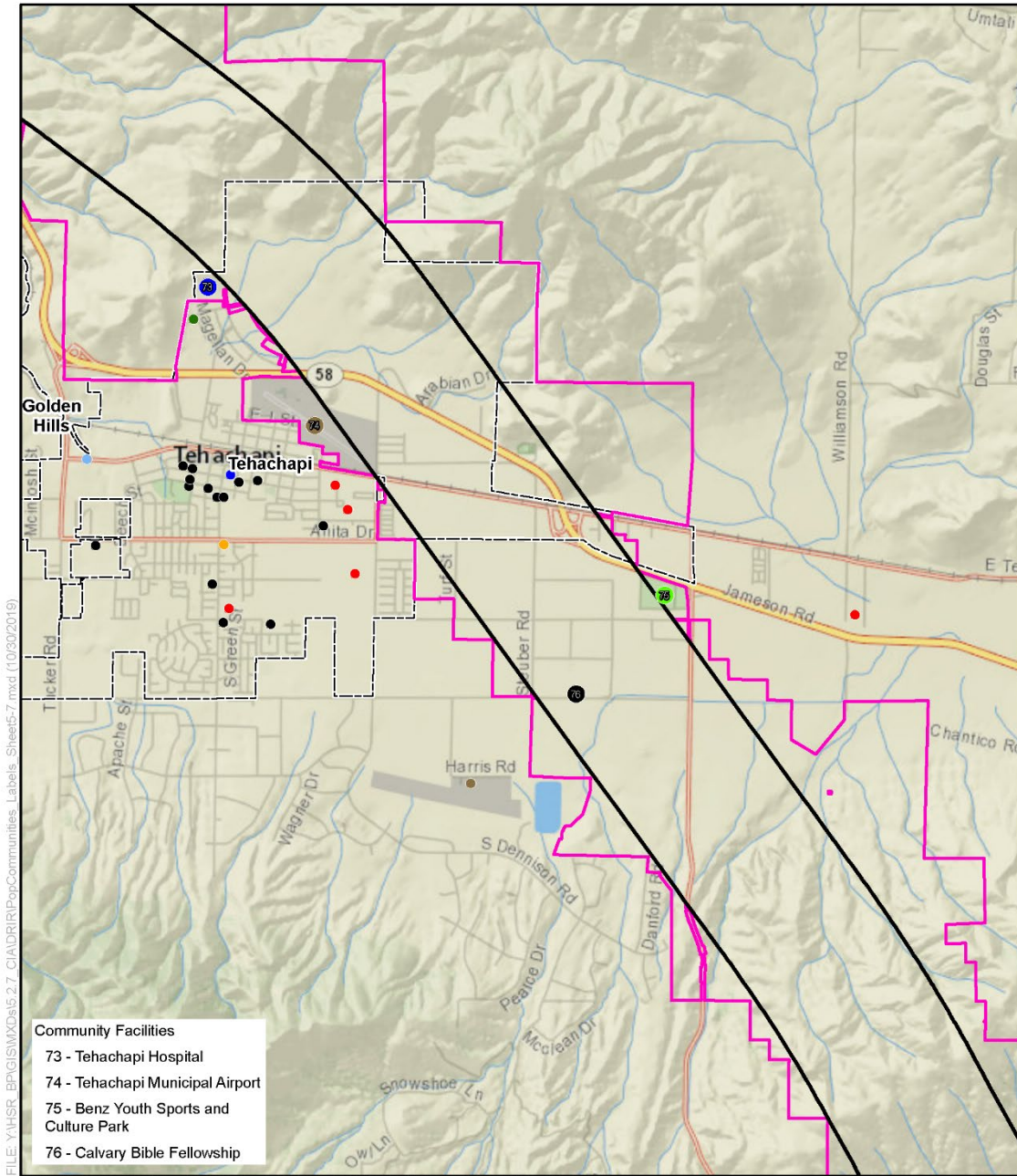


Figure 3.12-A-1 Community Facilities  
(Sheet 6 of 13)





PRELIMINARY DRAFT/SUBJECT TO CHANGE - HSR ALIGNMENT IS NOT DETERMINED  
 SOURCE: National Geographic (2015); CHSRA (4/2016)

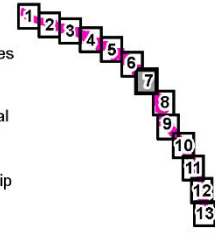
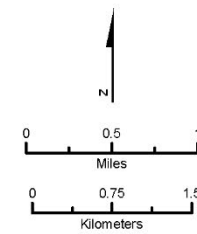
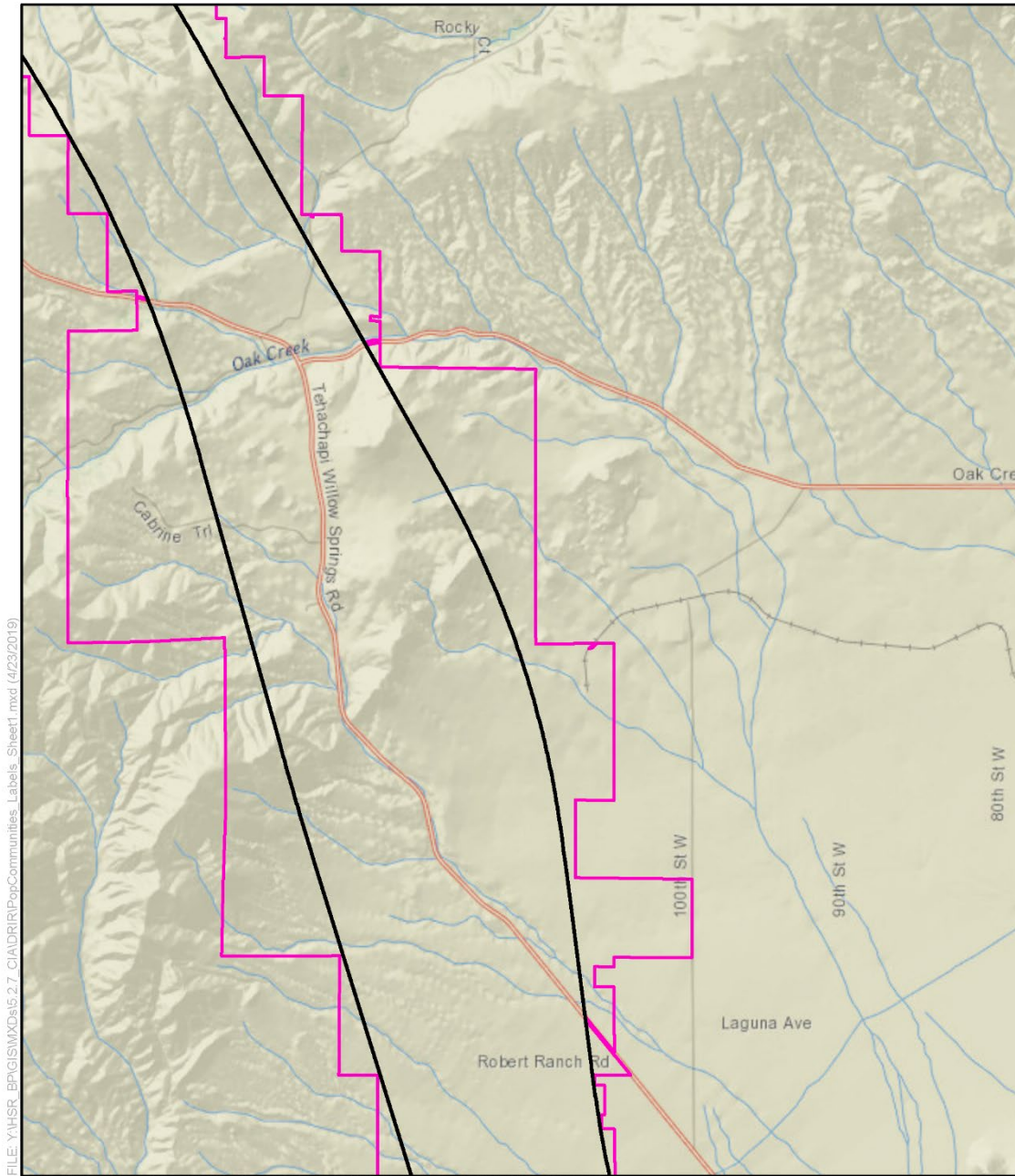


Figure 3.12-A-1 Community Facilities  
 (Sheet 7 of 13)



FILE: Y:\HSR\_BPG\GIS\MXD\S.2.7\_CIA\DRIR\PopCommunities\_Labels\_Sheet1.mxd (4/23/2019)

PRELIMINARY DRAFT/SUBJECT TO CHANGE - HSR ALIGNMENT IS NOT DETERMINED  
 SOURCE: National Geographic (2015); CHSRA (4/2016)

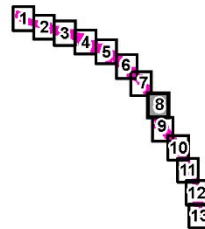
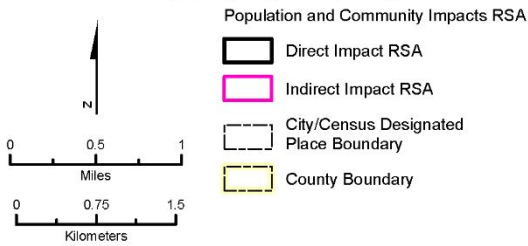
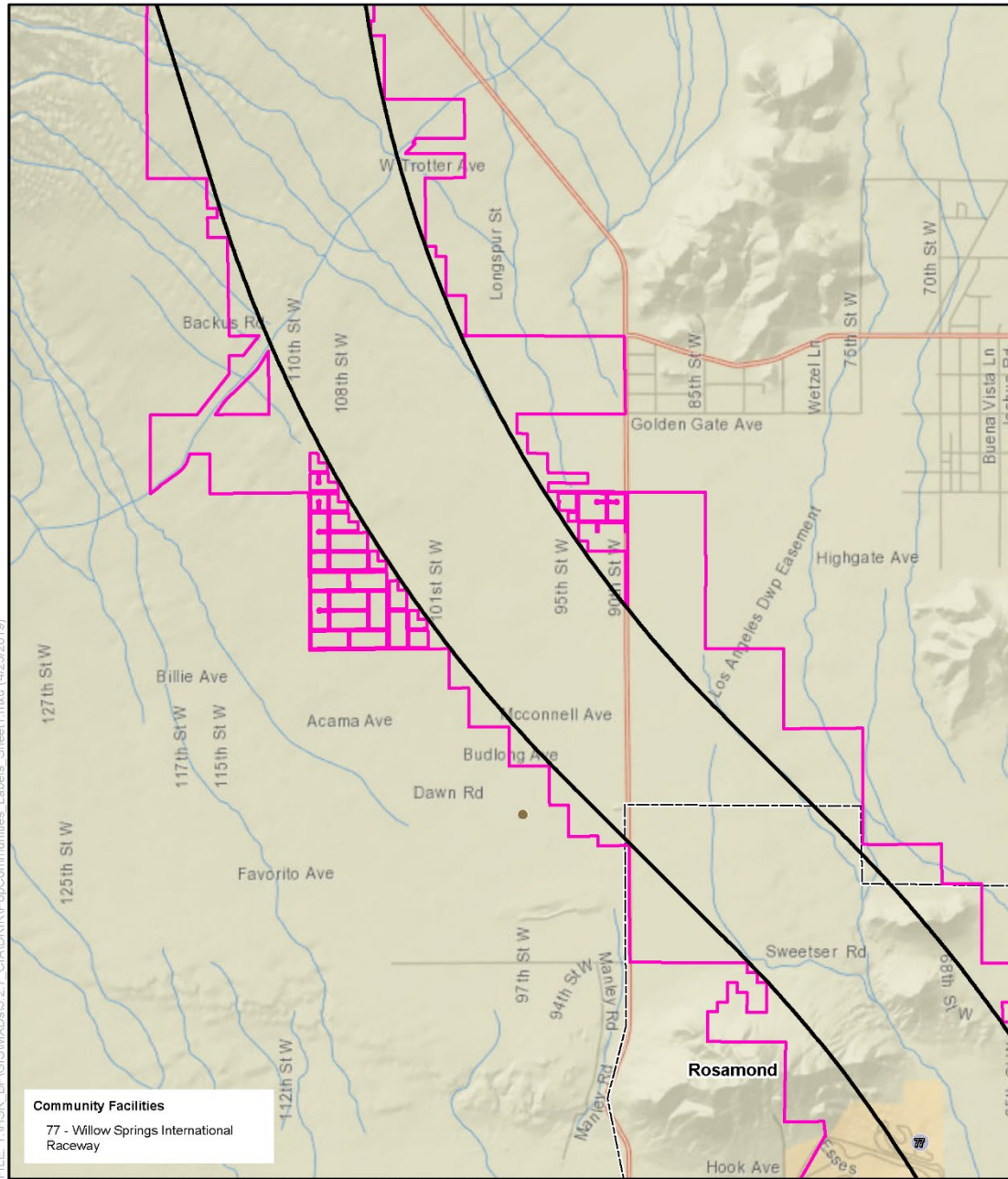


Figure 3.12-A-1 Community Facilities  
 (Sheet 8 of 13)





FILE: Y:\HSR\_BP\GIS\MXDs\5.2.7\_CIA\DR\IPopCommunities\_Labels\_Sheet1.mxd (4/23/2016)

PRELIMINARY DRAFT/SUBJECT TO CHANGE - HSR ALIGNMENT IS NOT DETERMINED  
SOURCE: National Geographic (2015); CHSRA (4/2016)

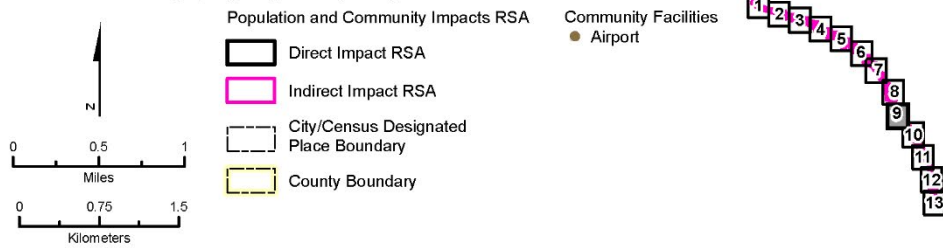
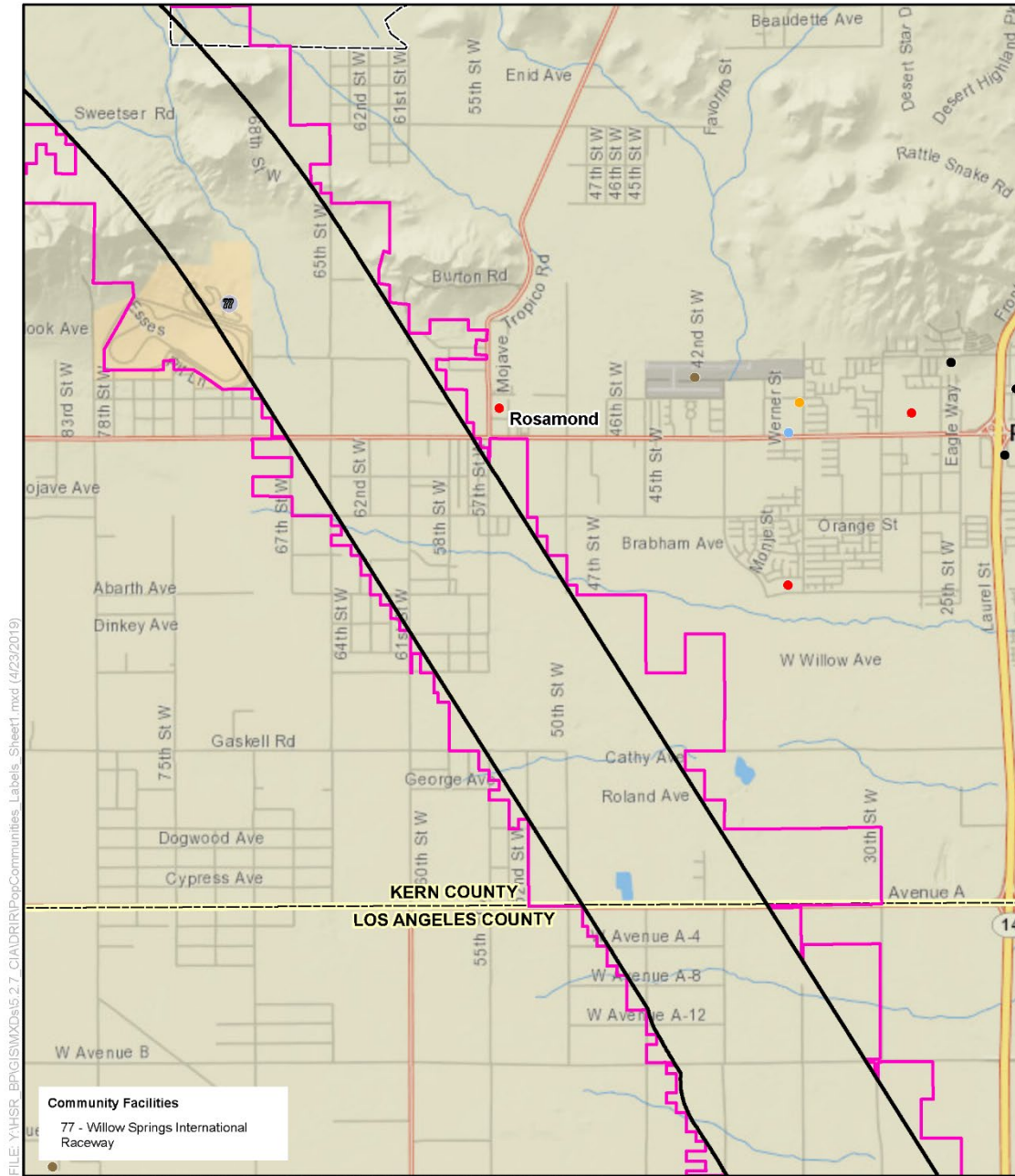


Figure 3.12-A-1 Community Facilities (Sheet 9 of 13)



PRELIMINARY DRAFT/SUBJECT TO CHANGE - HSR ALIGNMENT IS NOT DETERMINED  
 SOURCE: National Geographic (2015); CHSRA (4/2016)

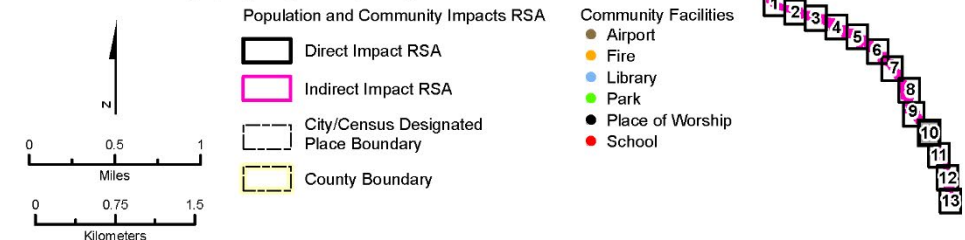
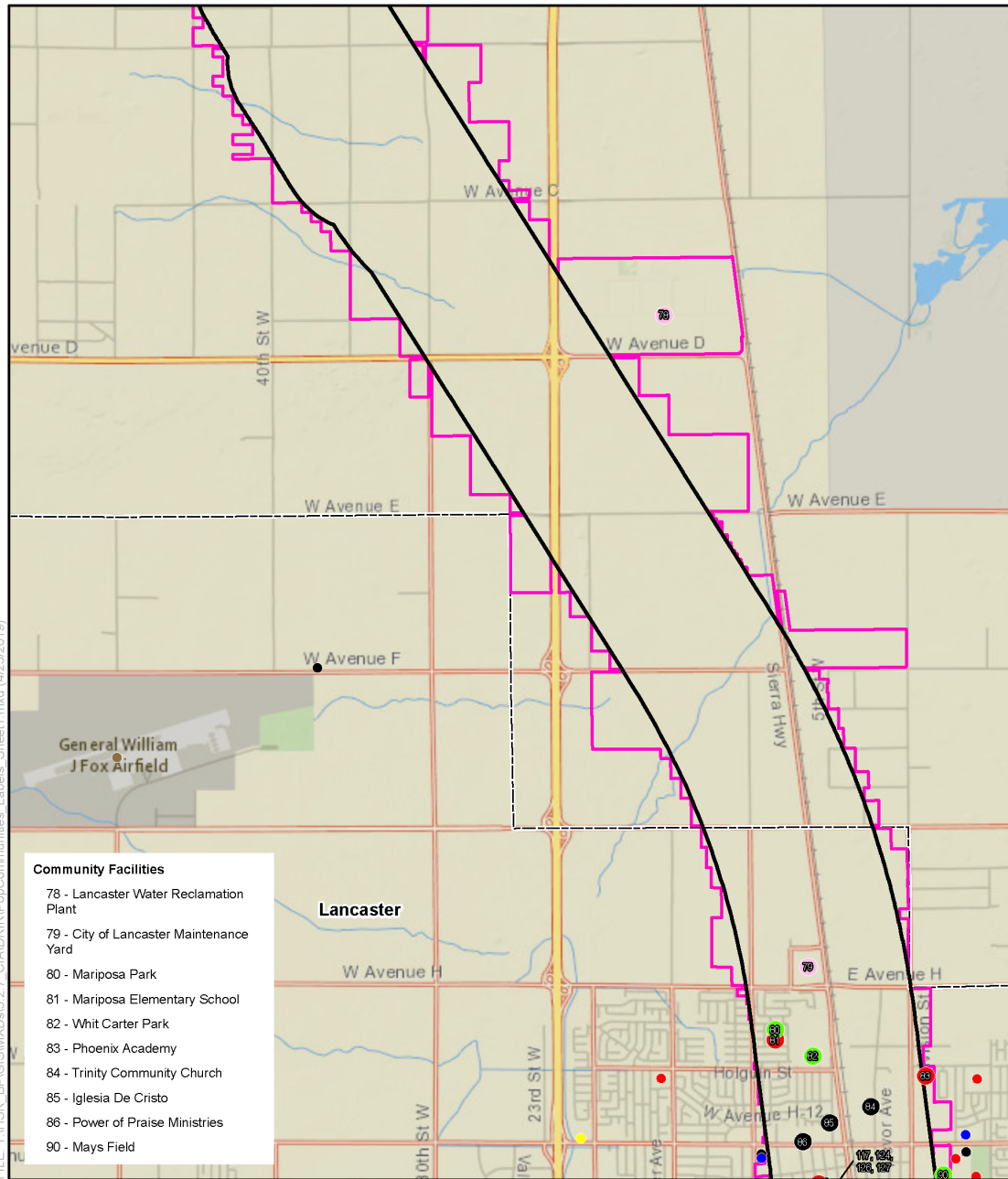


Figure 3.12-A-1 Community Facilities  
 (Sheet 10 of 13)



FILE: Y:\HSR\_EPR\GIS\MapDocs\2.7\_CAD\RIR\PopCommunities\_Labels\_Sheet1.mxd (4/23/2019)

PRELIMINARY DRAFT/SUBJECT TO CHANGE - HSR ALIGNMENT IS NOT DETERMINED  
 SOURCE: National Geographic (2015); CHSRA (4/2016)

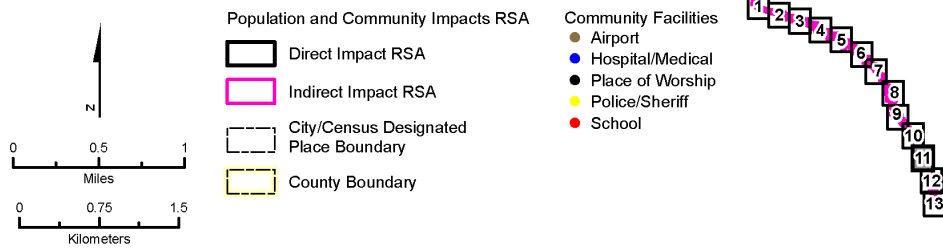
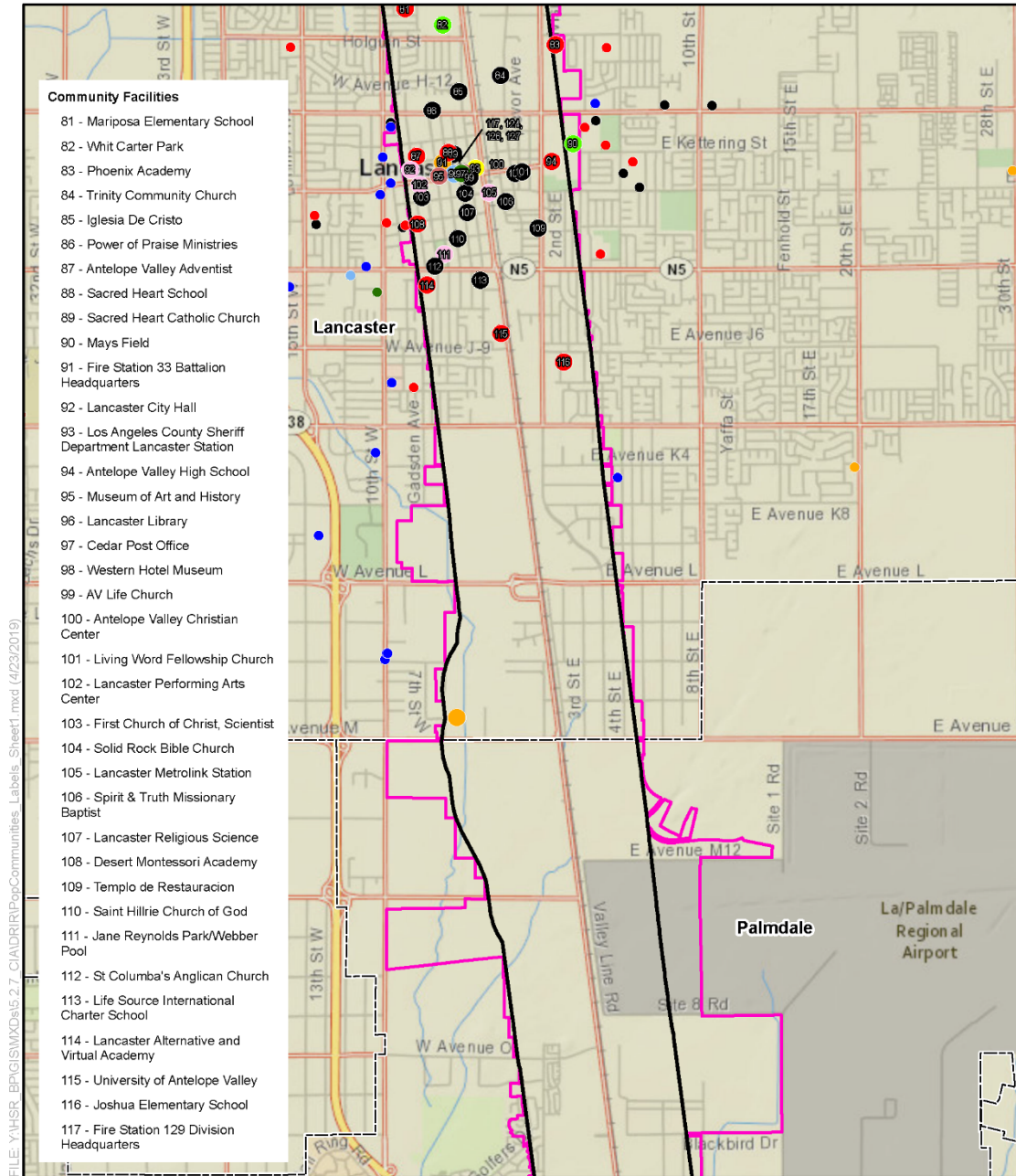


Figure 3.12-A-1 Community Facilities  
 (Sheet 11 of 13)





PRELIMINARY DRAFT/SUBJECT TO CHANGE - HSR ALIGNMENT IS NOT DETERMINED  
 SOURCE: National Geographic (2015); CHSRA (4/2016)

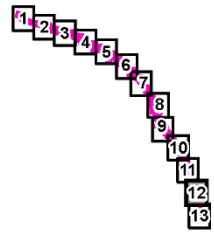
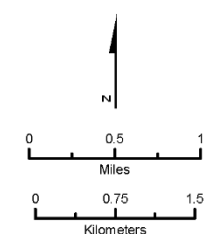
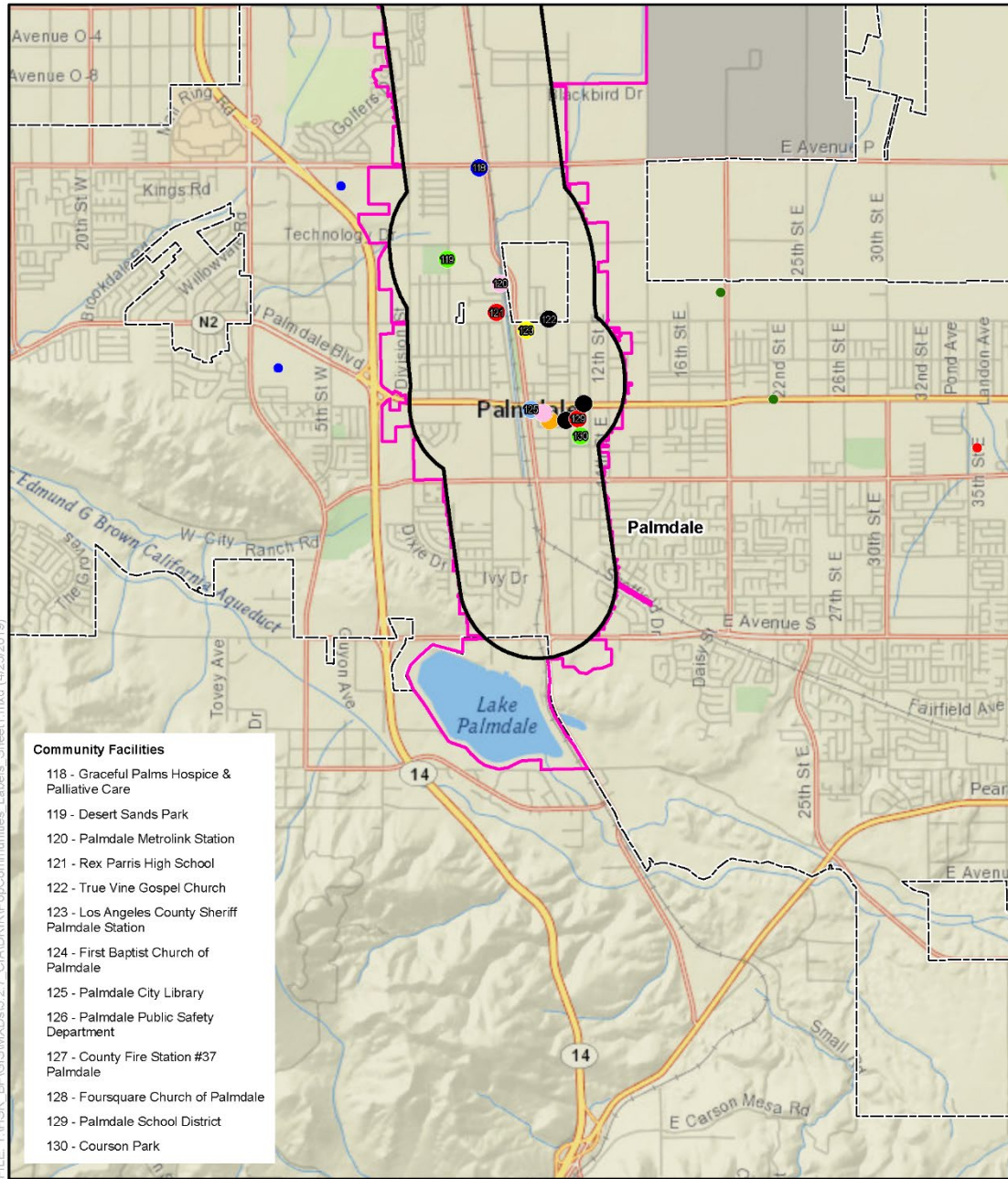


Figure 3.12-A-1 Community Facilities  
 (Sheet 12 of 13)



PRELIMINARY DRAFT/SUBJECT TO CHANGE - HSR ALIGNMENT IS NOT DETERMINED  
 SOURCE: National Geographic (2015); CHSRA (4/2016)

Figure 3.12-A-1 Community Facilities  
 (Sheet 13 of 13)



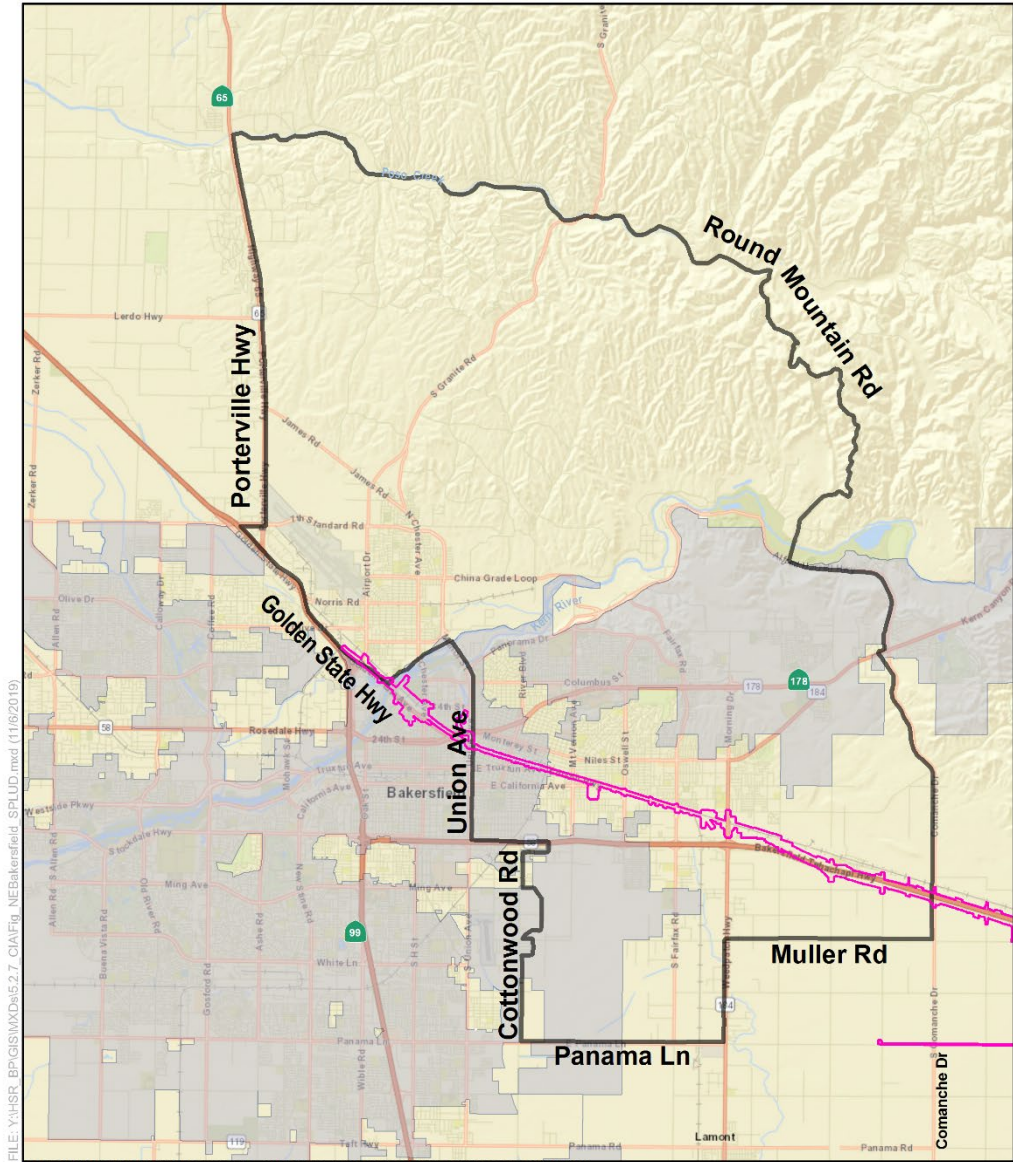


FILE: Y:\HSR\_BP\GIS\IMXD\5.2.7\_CIA\EIR\_EIS\RSA\_EconomicImpacts.mxd (11/6/2019)

PRELIMINARY DRAFT/SUBJECT TO CHANGE - HSR ALIGNMENT IS NOT DETERMINED  
 SOURCE: National Geographic (2014); Esri (2014); CHSRA (4/2016, 8/2019, 10/2019)



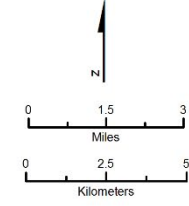
**Figure 3.12-A-2 Economic Impacts Resource Study Area**



FILE: Y:\HSR\_BPG\GIS\MXDs\6.27\_CIA\Fig\_NE\Bakersfield\_SPLUD.mxd (11/6/2019)

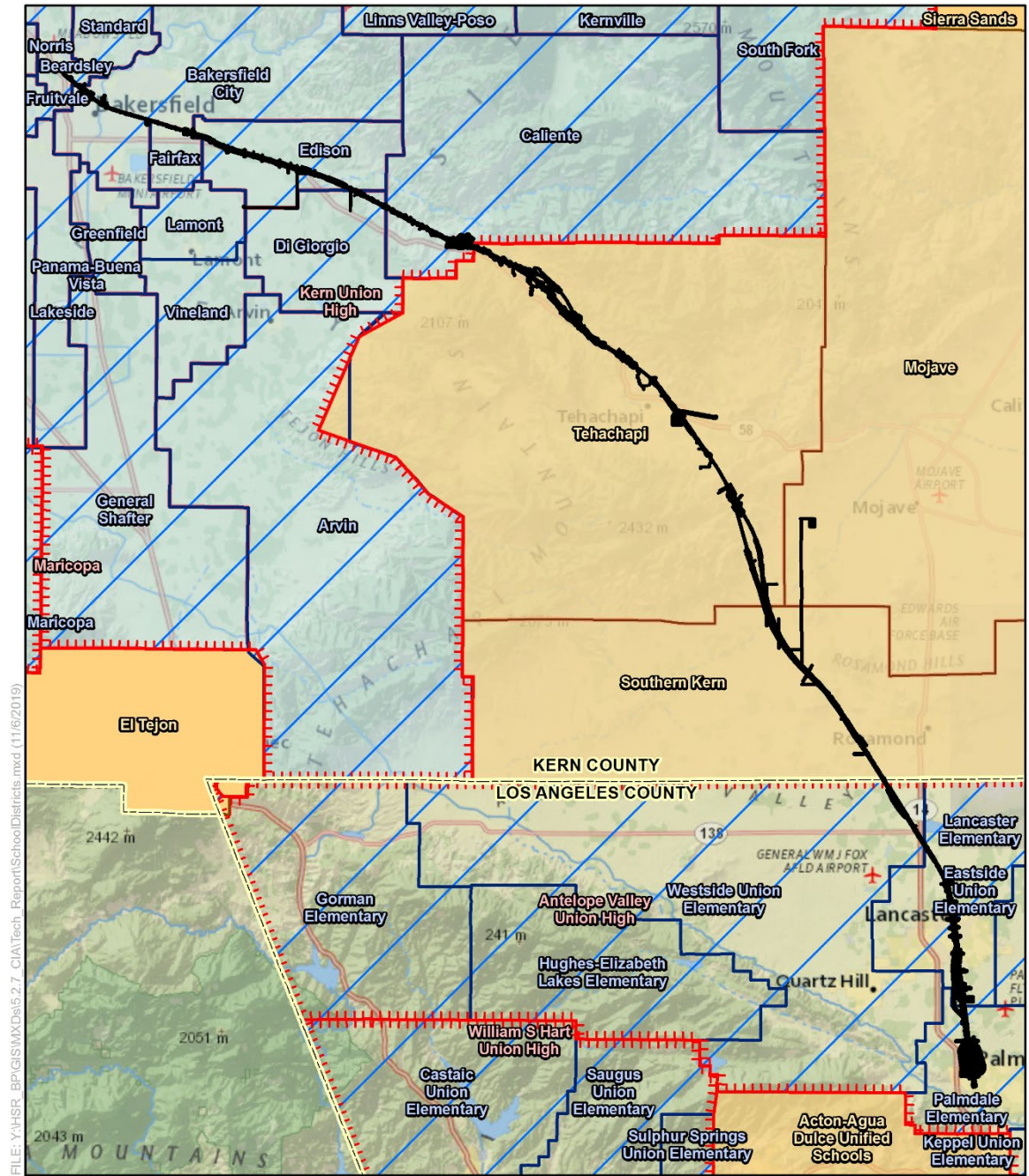
PRELIMINARY DRAFT/SUBJECT TO CHANGE - HSR ALIGNMENT IS NOT DETERMINED  
 SOURCE: National Geographic (2015); CHSRA (4/2016, 8/2018, 10/2019)

- Station Planning, Land Use, and Development RSA
- Northeast Bakersfield District
- City of Bakersfield



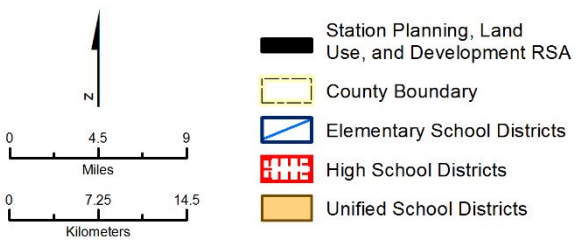
**Figure 3.12-A-3 Northeast Bakersfield**





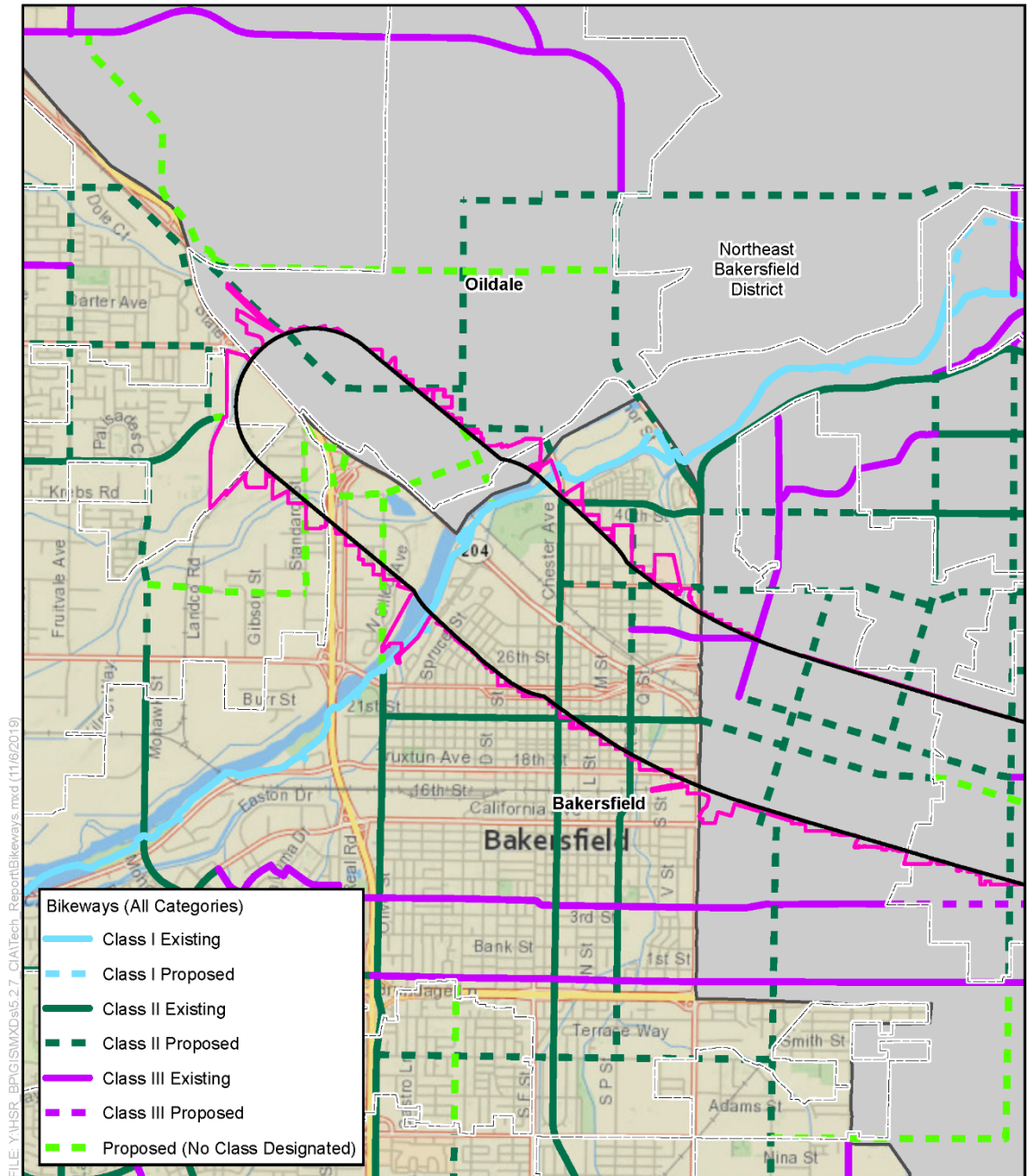
FILE: Y:\HSR\_BP\GIS\IMXD\5.2.7\_CIA\Tech\_Report\SchoolDistricts.mxd (11/6/2019)

PRELIMINARY DRAFT/SUBJECT TO CHANGE - HSR ALIGNMENT IS NOT DETERMINED  
 SOURCE: National Geographic (2015); CHSRA (4/2016, 8/2018, 10/2019); Kern County (2004); Los Angeles County (2011)



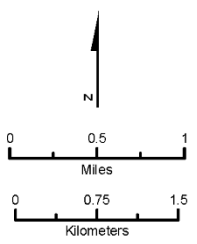
**Figure 3.12-A-4 School Districts**



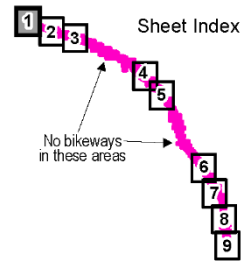


FILE: Y:\HSR\_BP\GIS\MXDs\5.2.7\_CIA\Tech\_Report\Bikeways.mxd (11/6/2019)

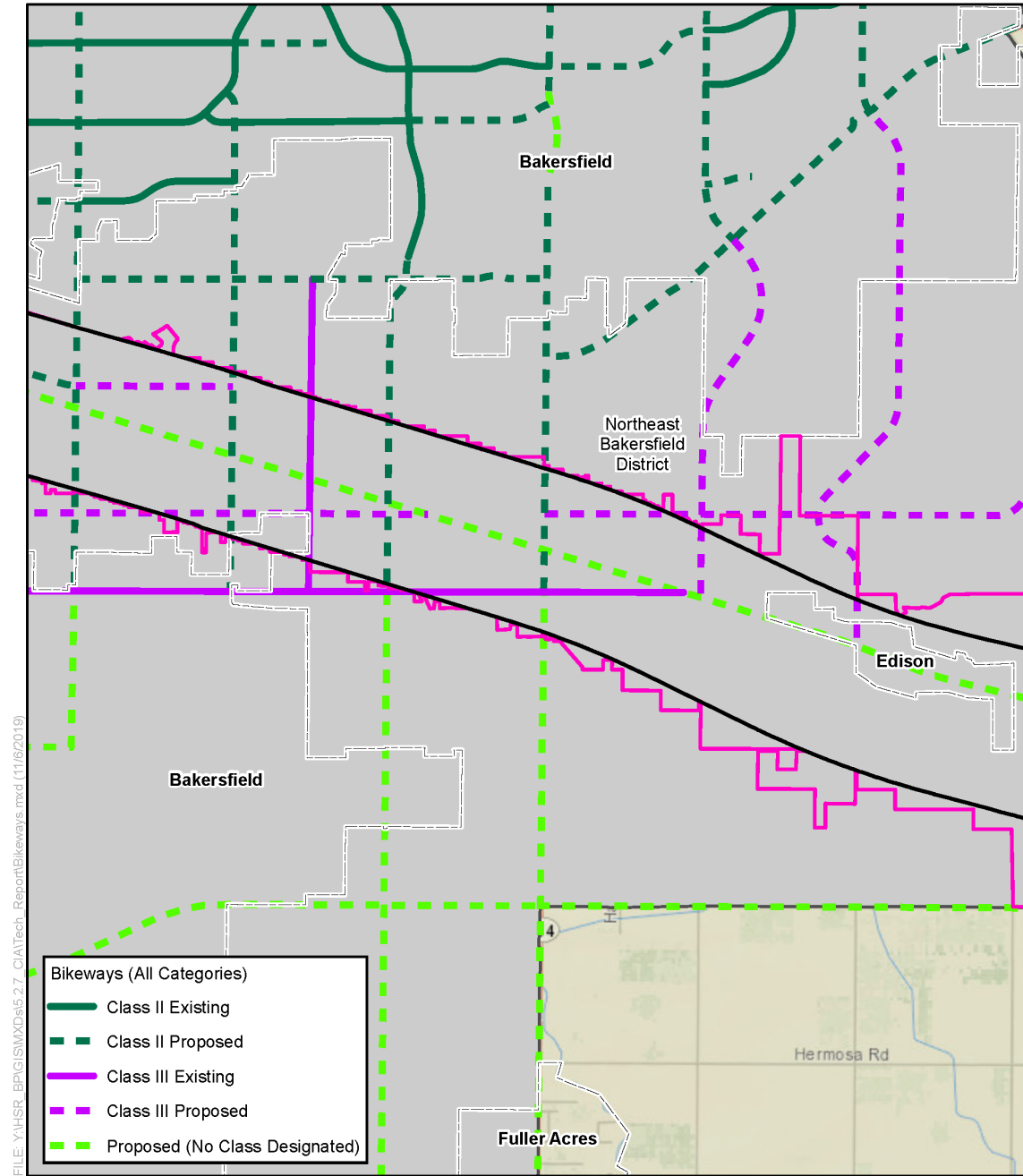
PRELIMINARY DRAFT/SUBJECT TO CHANGE - HSR ALIGNMENT IS NOT DETERMINED  
 SOURCE: National Geographic (2015); CHSRA (4/2016, 8/2018, 10/2019)



- Population and Community Impacts RSAs
- Direct Impact RSA
  - Indirect Impact RSA
  - Northeast Bakersfield District
  - City/Census Designated Place Boundary
  - County Boundary

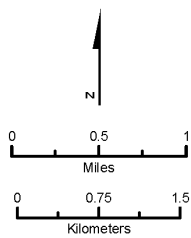


**Figure 3.12-A-5 Bikeways**  
 (Sheet 1 of 9)



FILE: Y:\HSR\BPG\IS\WXD\9a5.27\_CIA\Tech\_Report\Bikeways.mxd (11/6/2019)

PRELIMINARY DRAFT/SUBJECT TO CHANGE - HSR ALIGNMENT IS NOT DETERMINED  
 SOURCE: National Geographic (2015); CHSRA (4/2016, 8/2018, 10/2019)



- Population and Community Impacts RSAs
- Direct Impact RSA
  - Indirect Impact RSA
  - Northeast Bakersfield District
  - City/Census Designated Place Boundary
  - County Boundary

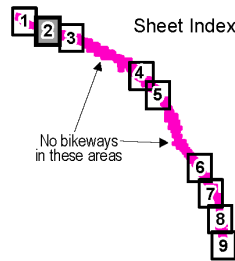
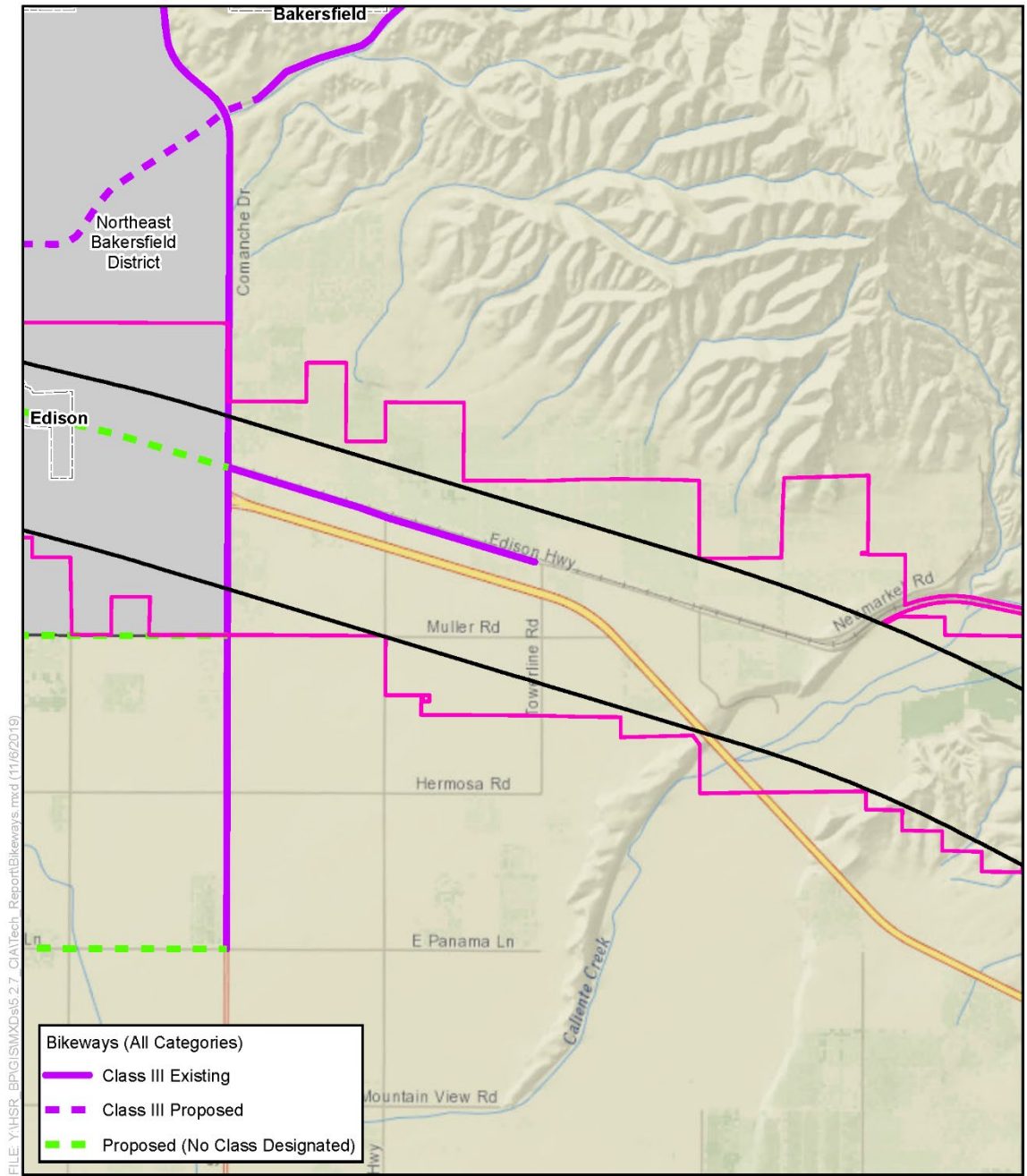
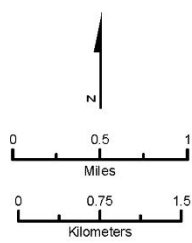


Figure 3.12-A-5 Bikeways  
 (Sheet 2 of 9)



FILE: Y:\HSR\_BP\GIS\IMXD\5.2.7\_CIA\Tech\_Report\Bikeways.mxd (11/9/2019)

PRELIMINARY DRAFT/SUBJECT TO CHANGE - HSR ALIGNMENT IS NOT DETERMINED  
 SOURCE: National Geographic (2015); CHSRA (4/2016, 8/2018, 10/2019)



- Population and Community Impacts RSAs
- Direct Impact RSA
  - Indirect Impact RSA
  - Northeast Bakersfield District
  - City/Census Designated Place Boundary
  - County Boundary

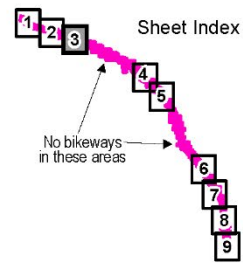
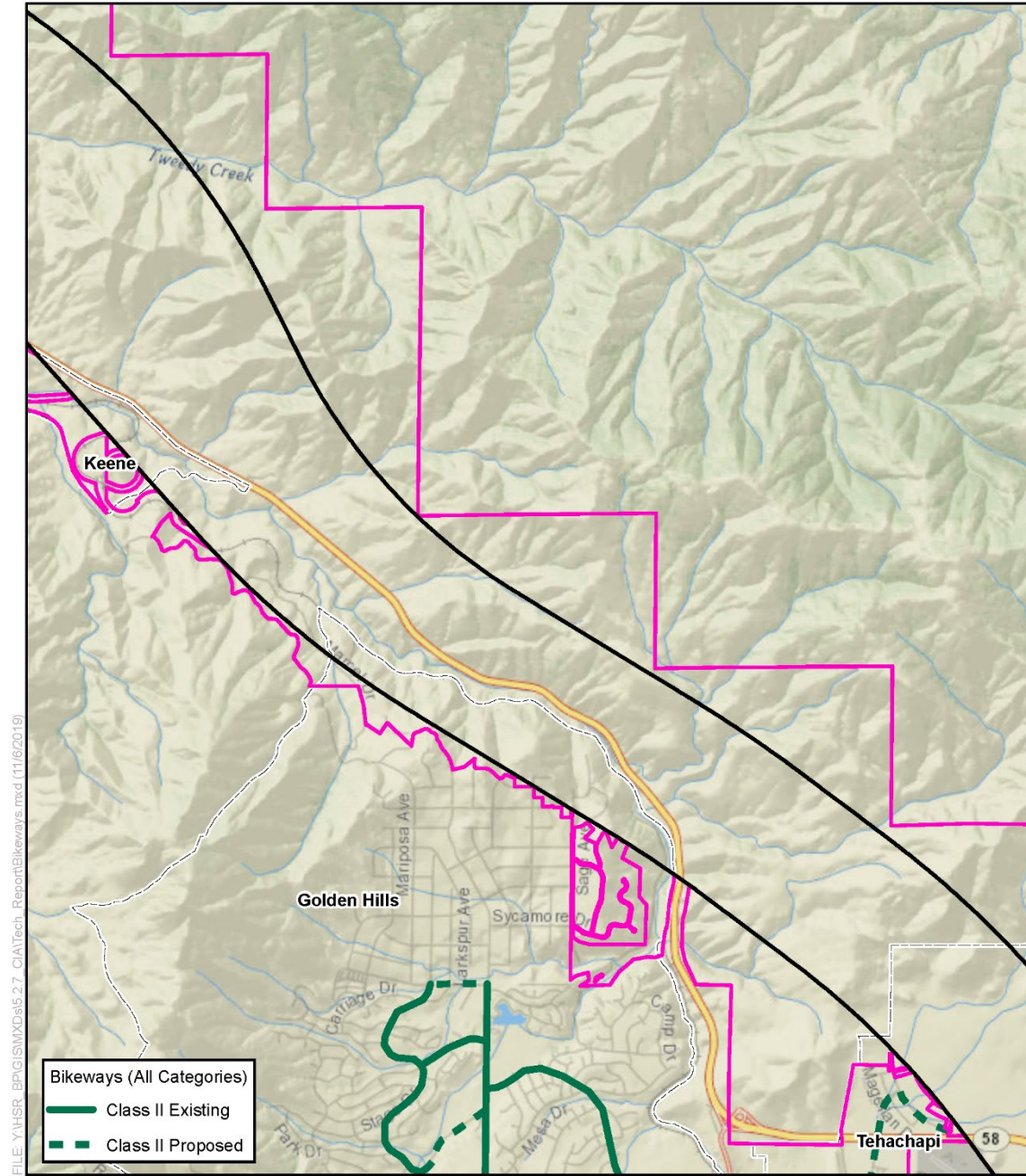


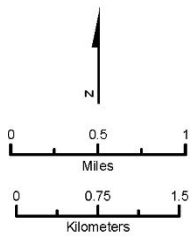
Figure 3.12-A-5 Bikeways  
(Sheet 3 of 9)





FILE: Y:\HSR\_BP\GIS\IMX\Da5.2.7\_CIA\Tech\_Report\Bikeways.mxd (11/6/2019)

PRELIMINARY DRAFT/SUBJECT TO CHANGE - HSR ALIGNMENT IS NOT DETERMINED  
 SOURCE: National Geographic (2015); CHSRA (4/2016, 8/2018, 10/2019)



- Population and Community Impacts RSAs
- Direct Impact RSA
  - Indirect Impact RSA
  - City/Census Designated Place Boundary
  - County Boundary

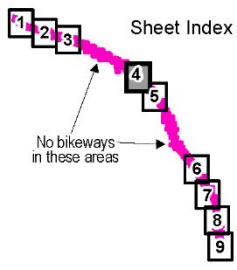
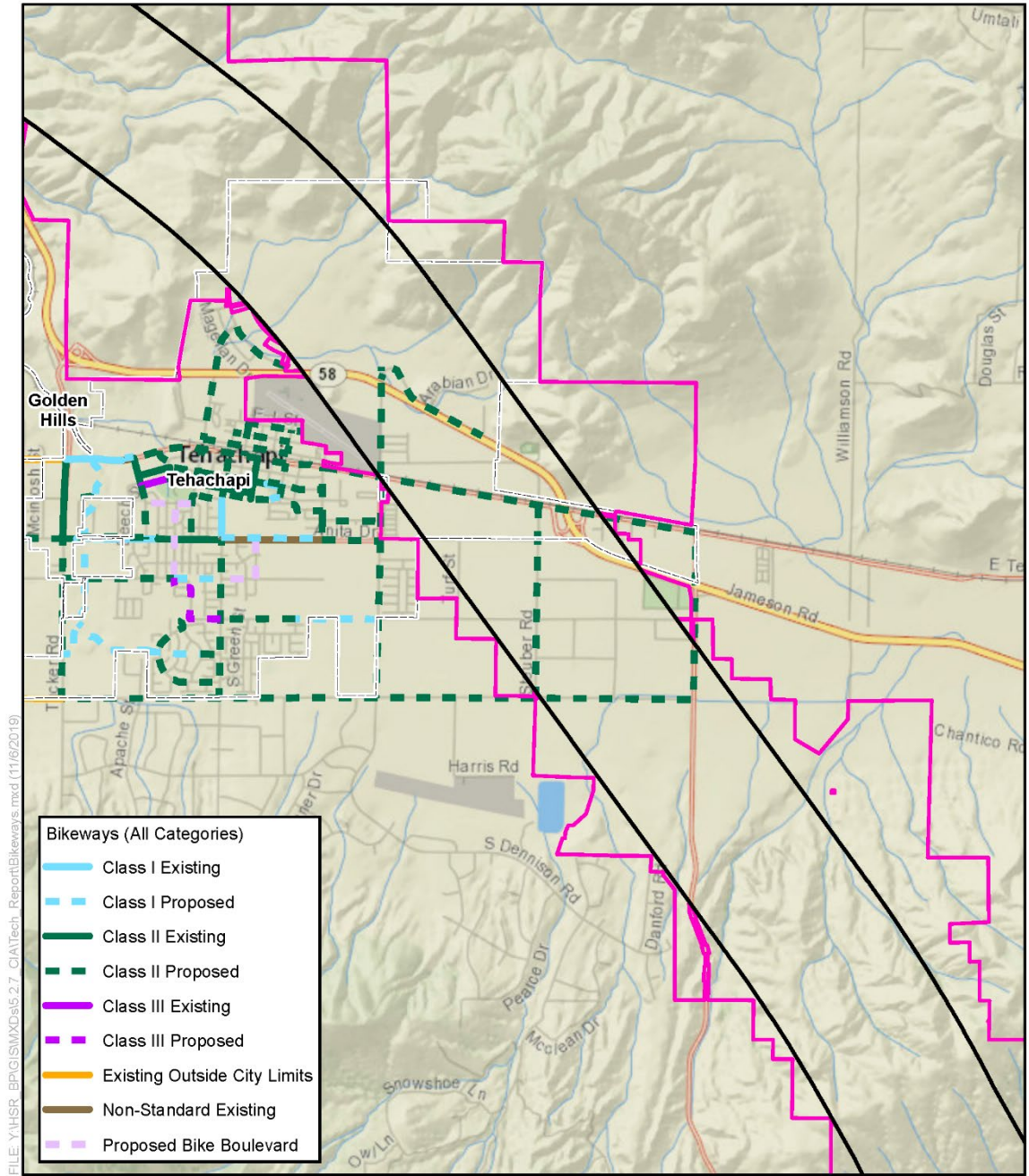
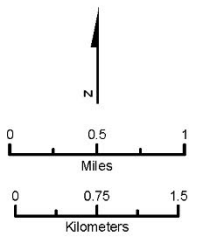


Figure 3.12-A-5 Bikeways  
(Sheet 4 of 9)



FILE: Y:\HSR\_BP\GIS\IMX\5.2.7\_CIA\Tech\_Report\Bikeways.mxd (11/9/2019)

PRELIMINARY DRAFT/SUBJECT TO CHANGE - HSR ALIGNMENT IS NOT DETERMINED  
 SOURCE: National Geographic (2015); CHSRA (4/2016, 8/2018, 10/2019)



- Population and Community Impacts RSAs
- Direct Impact RSA
  - Indirect Impact RSA
  - City/Census Designated Place Boundary
  - County Boundary

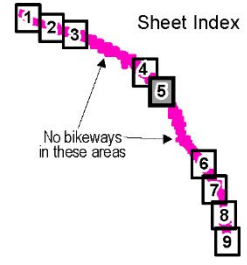
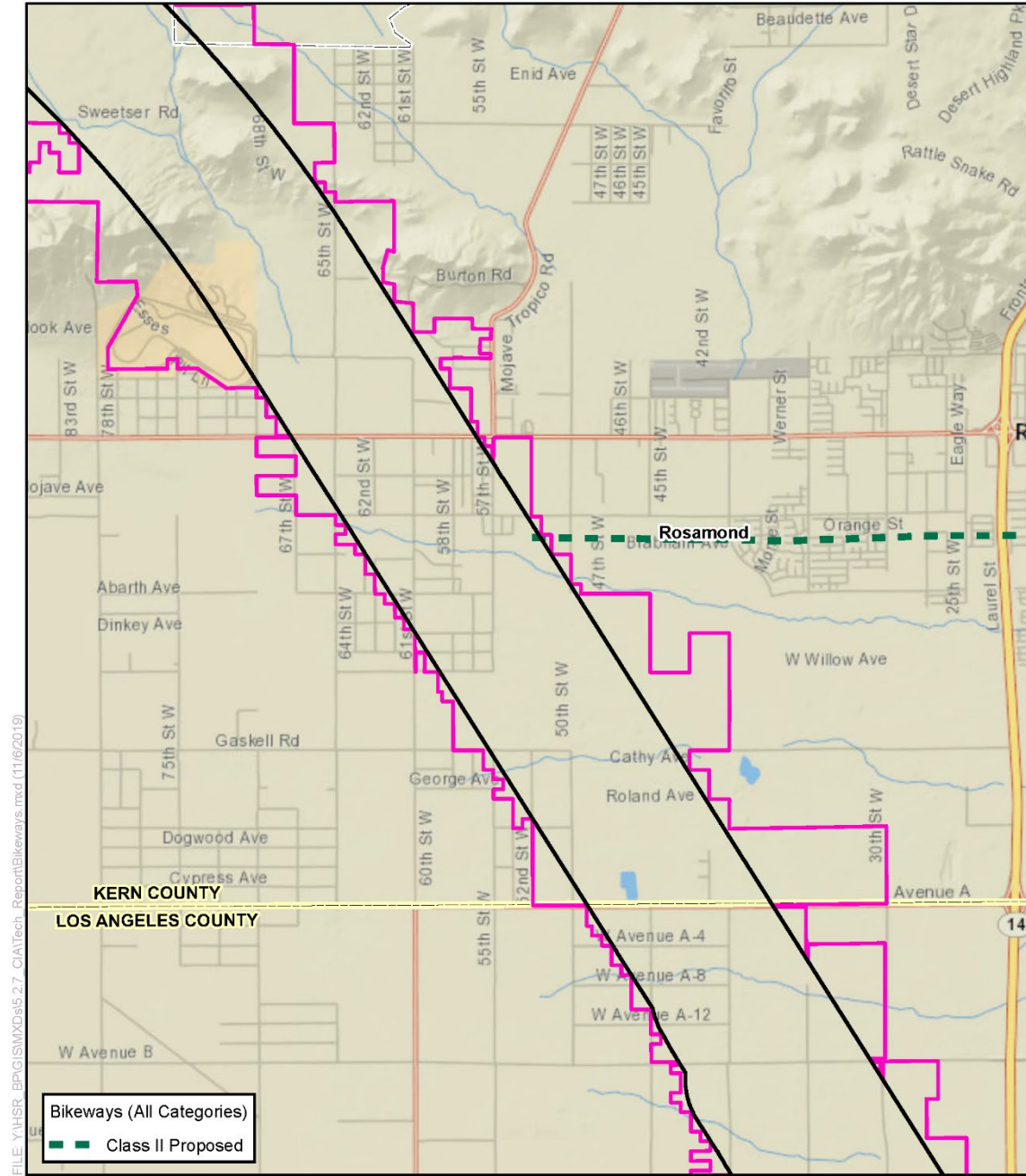


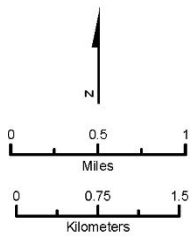
Figure 3.12-A-5 Bikeways (Sheet 5 of 9)





FILE: Y:\HSR\_BP\GIS\IMX\da5.2.7\_CIA\Tech\_Report\Bikeways.mxd (11/6/2019)

PRELIMINARY DRAFT/SUBJECT TO CHANGE - HSR ALIGNMENT IS NOT DETERMINED  
 SOURCE: National Geographic (2015); CHSRA (4/2016, 8/2018, 10/2019)



- Population and Community Impacts RSAs**
- Direct Impact RSA
  - Indirect Impact RSA
  - City/Census Designated Place Boundary
  - County Boundary

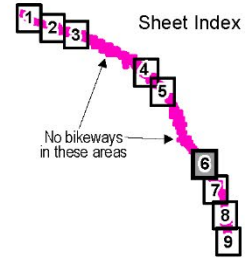


Figure 3.12-A-5 Bikeways  
 (Sheet 6 of 9)

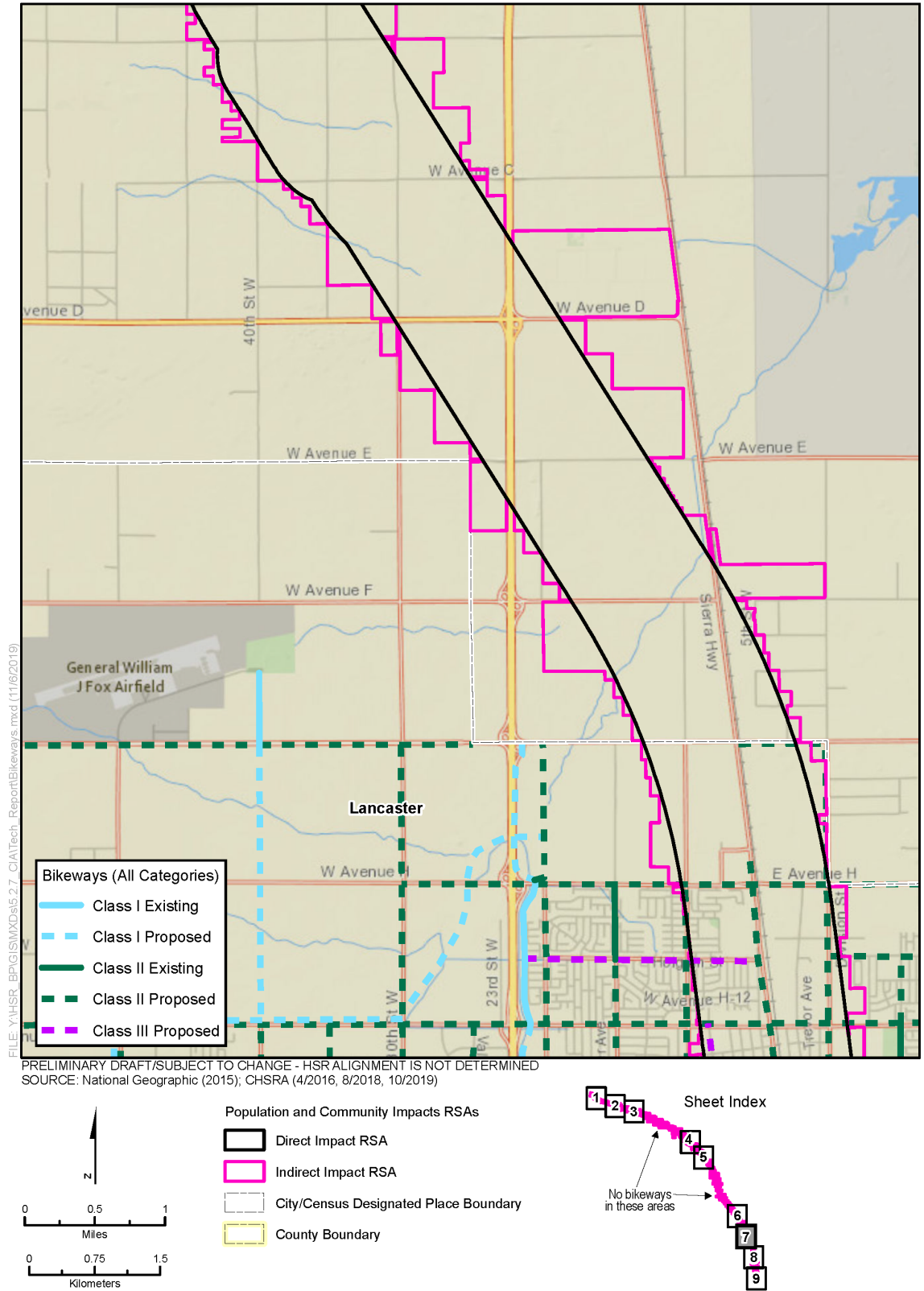
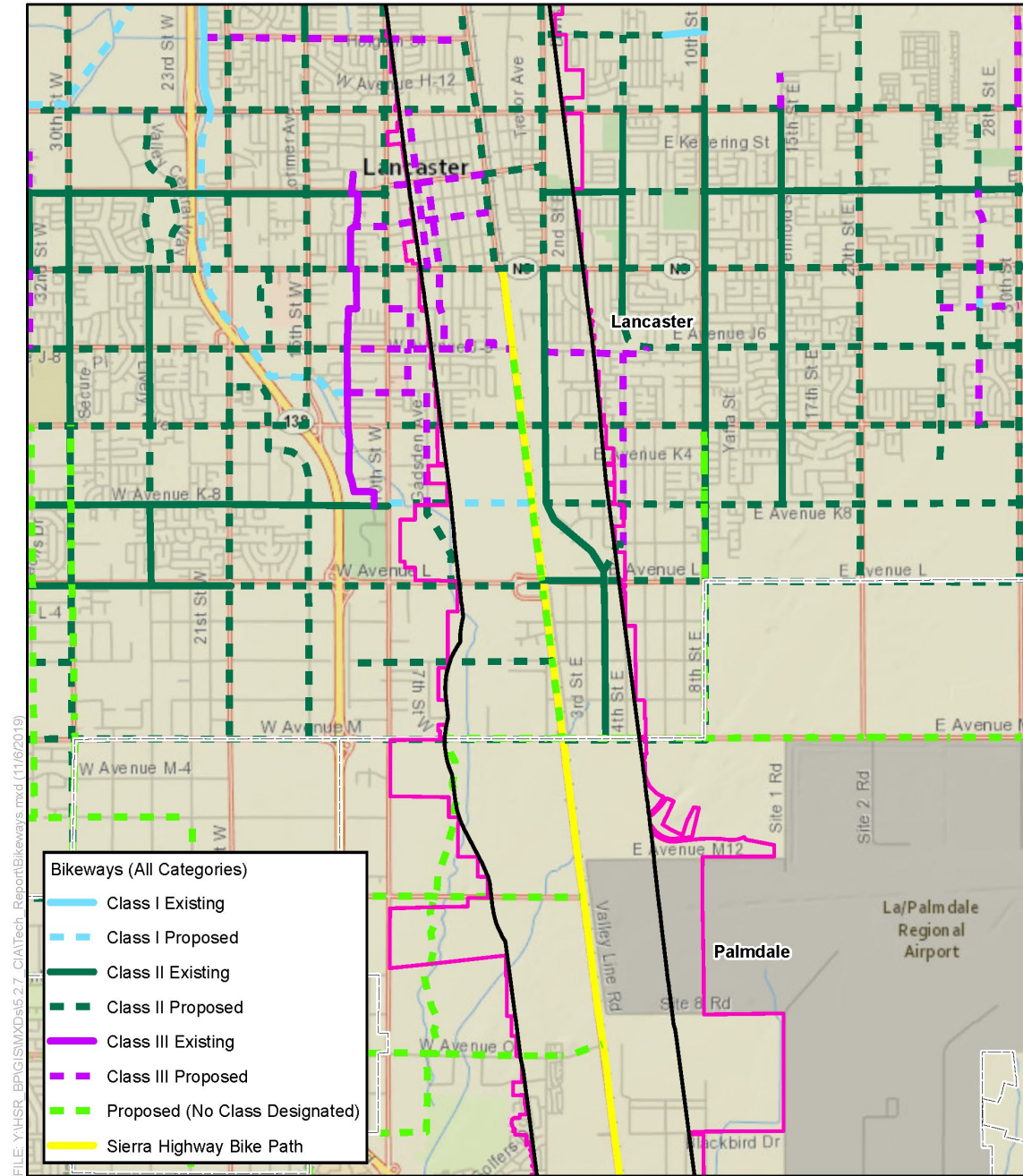
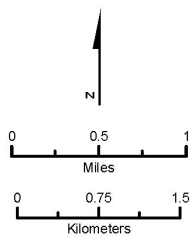


Figure 3.12-A-5 Bikeways (Sheet 7 of 9)



FILE: Y:\HSR-BP\GIS\MXDs\5.2.7\_CIA\Tech\_Report\Bikeways.mxd (11/6/2019)

PRELIMINARY DRAFT/SUBJECT TO CHANGE - HSR ALIGNMENT IS NOT DETERMINED  
 SOURCE: National Geographic (2015); CHSRA (4/2016, 8/2018, 10/2019)



- Population and Community Impacts RSAs
- Direct Impact RSA
  - Indirect Impact RSA
  - City/Census Designated Place Boundary
  - County Boundary

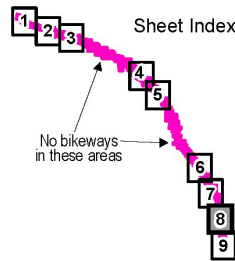
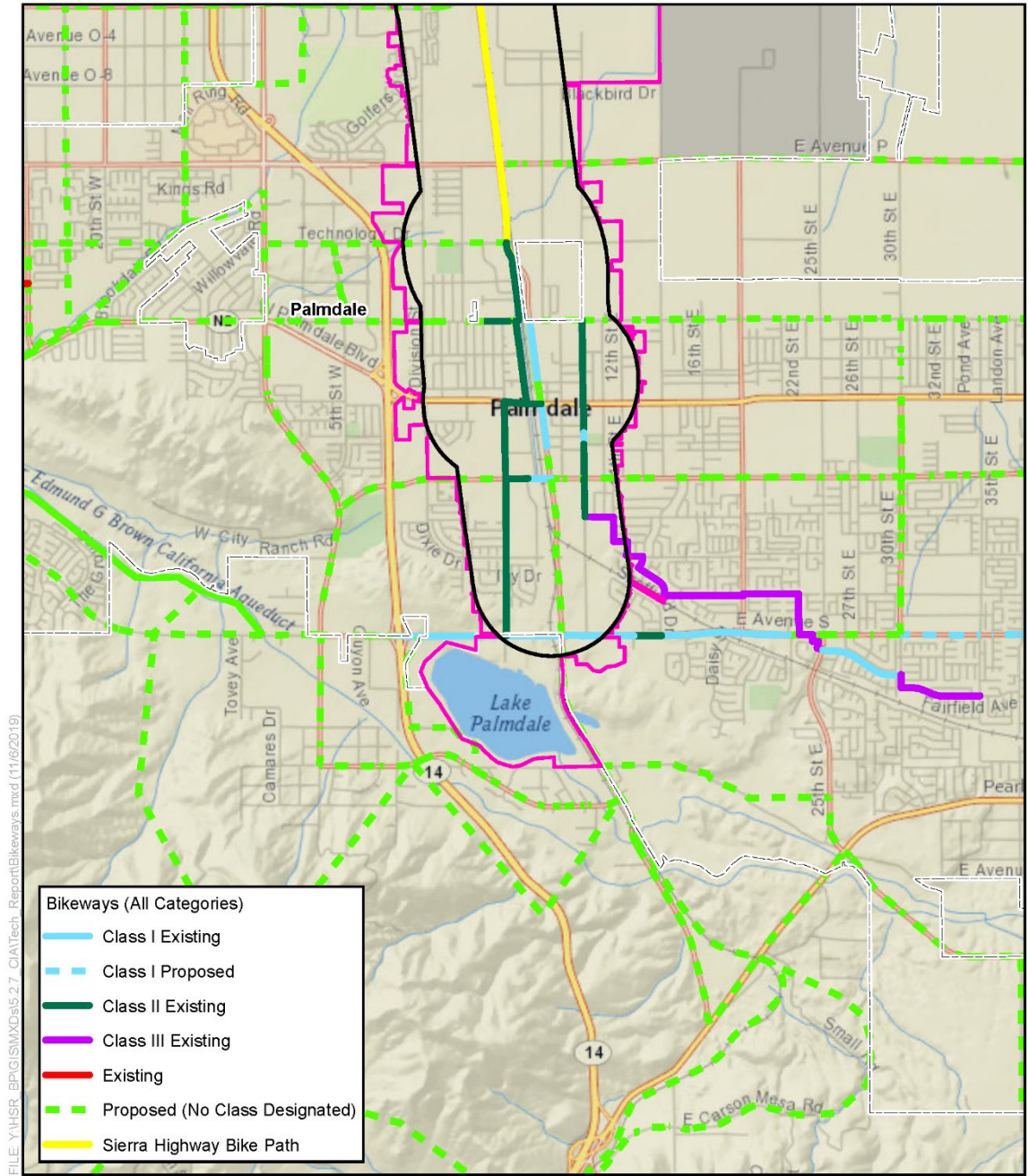


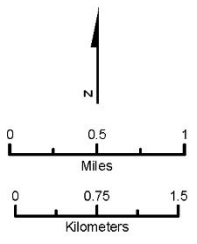
Figure 3.12-A-5 Bikeways  
 (Sheet 8 of 9)





FILE: Y:\HSR\_BP\GIS\MXD\5.27\_CIA\Tech\_Report\Bikeways.mxd (11/6/2019)

PRELIMINARY DRAFT/SUBJECT TO CHANGE - HSR ALIGNMENT IS NOT DETERMINED  
 SOURCE: National Geographic (2015); CHSRA (4/2016, 8/2018, 10/2019)



- Population and Community Impacts RSAs
- Direct Impact RSA
  - Indirect Impact RSA
  - City/Census Designated Place Boundary
  - County Boundary

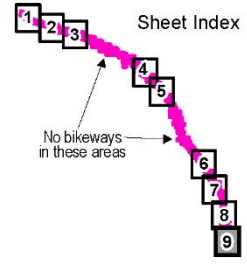
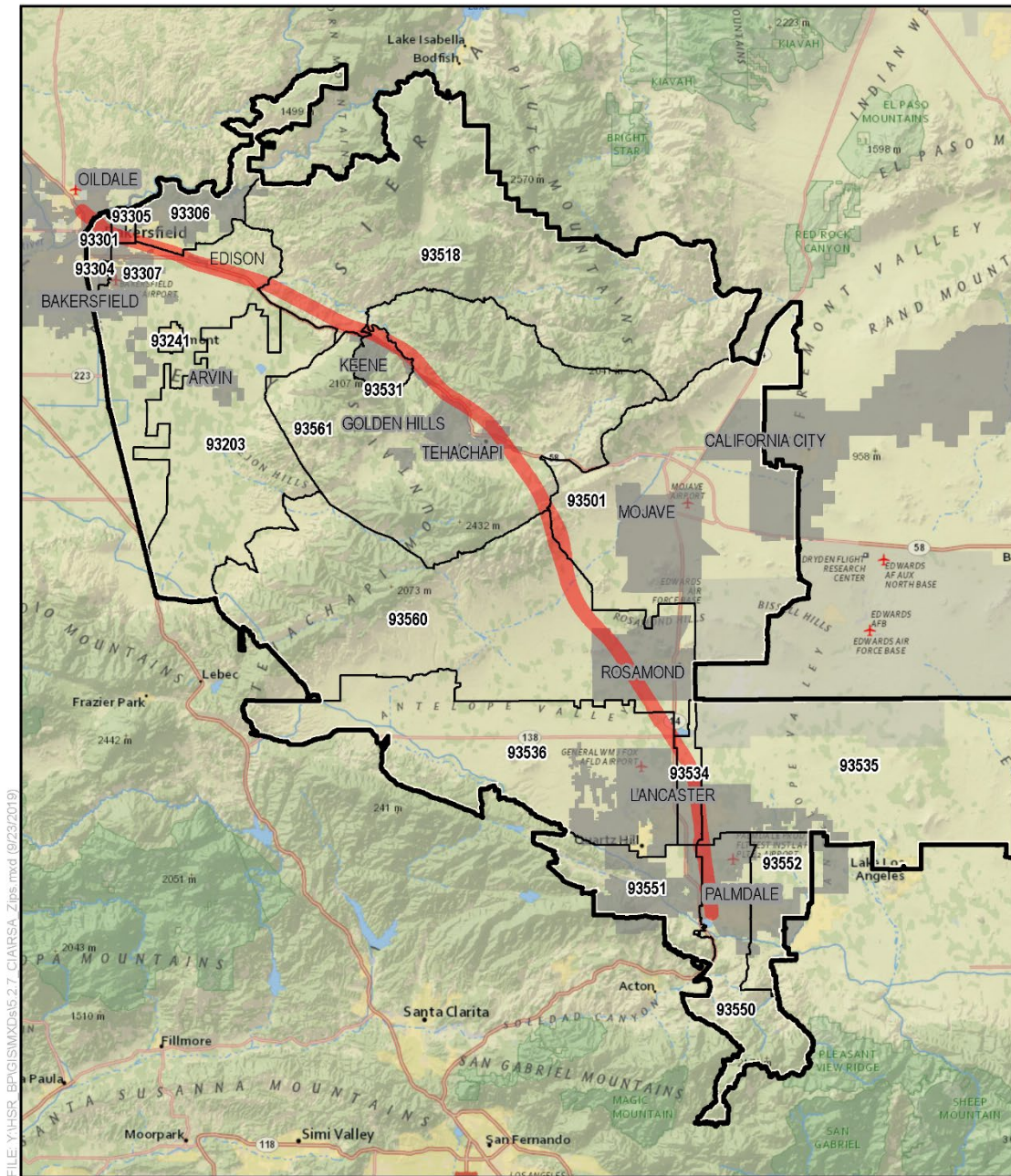
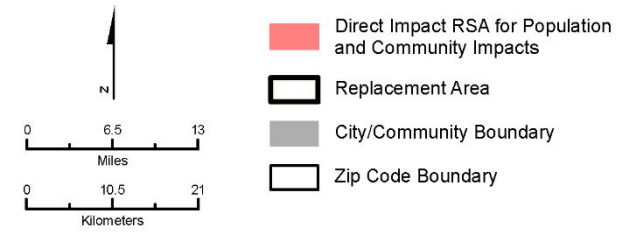


Figure 3.12-A-5 Bikeways  
(Sheet 9 of 9)



PRELIMINARY DRAFT/SUBJECT TO CHANGE - HSR ALIGNMENT IS NOT DETERMINED  
 SOURCE: National Geographic (2015); CHRSA (4/2616)



**Figure 3.12-A-6 Replacement Areas**



**Table 3.12-A-1 Community Facilities Within the Direct and Indirect Impacts Resource Study Areas for Population and Community Impacts**

Facility No. <sup>1</sup>	Name/Address	Jurisdiction
1	Good Samaritan Hospital 901 Olive Drive	Bakersfield (Oildale CDP)
2	California Highway Patrol – Bakersfield Area Office 4040 Buck Owens Boulevard	Bakersfield
3	Bethel Apostolic Academy 1418 W Columbus Drive	Bakersfield
4	Stella Hills Elementary School 3800 Jewett Avenue	Bakersfield
5	Eternity Preparatory High School and Academy 2119 20th Street	Bakersfield
6	San Joaquin Community Hospital 2615 Chester Avenue	Bakersfield
7	Bakersfield Memorial Hospital 420 34th Street	Bakersfield
8	Downtown Elementary School 2021 M Street	Bakersfield
9	Garden Community Church 2010 O Street	Bakersfield
10	Kern County Sheriff – Crime Lab 1300 18th Street	Bakersfield
11	Kern County School Superintendent 1300 17th Street	Bakersfield
12	First Baptist Church 2787 20th Street West	Bakersfield
13	Kern County Law Library 1415 Truxtun Avenue	Bakersfield
14	Kern County Sheriff – Jail 1415 Truxtun Avenue	Bakersfield
15	Mercy – Memorial Home Health 1600 D Street	Bakersfield
16	Kern County Sheriff 1501 L Street	Bakersfield
17	Kern County Clerk 1115 Truxtun Avenue	Bakersfield
18	Ebenezer Baptist Church 1401 California Avenue	Bakersfield
19	Bakersfield Muslim Center 1221 California Avenue	Bakersfield
20	Tristone Baptist Church 1031 M Street	Bakersfield
21	California Avenue Church of Christ 1020 California Avenue	Bakersfield

Facility No. <sup>1</sup>	Name/Address	Jurisdiction
22	Rafer Johnson Children's Center 1100 9th Street	Bakersfield
23	Trinity Temple Church of God in Christ 1028 O Street	Bakersfield
24	Mt. Zion Baptist Church 825 California Avenue	Bakersfield
25	Cain Memorial African Methodist Episcopal Church 630 California Avenue	Bakersfield
26	Amtrak Station Playground 601 Truxtun Avenue	Bakersfield
27	Beale Memorial Library 701 Truxtun Avenue	Bakersfield
28	U.S. Alcohol, Tobacco and Firearms 800 Truxtun Avenue	Bakersfield
29	Bakersfield Museum of Art 1930 R Street	Bakersfield
30	Central Park 600 21st Street	Bakersfield
31	First Christian Church 1660 S Street	Bakersfield
32	Hellenic Park (Private) 401 Truxtun Avenue	Bakersfield
33	St. George's Greek Orthodox Church 401 Truxtun Avenue	Bakersfield
34	Sandstone Elementary 301 E 18th Street	Bakersfield (Northeast Bakersfield District)
35	Our Lady of Guadalupe School 609 E California Avenue	Bakersfield (Northeast Bakersfield District)
36	Our Lady of Guadalupe Church 601 E California Avenue	Bakersfield (Northeast Bakersfield District)
37	Pentecostal Holiness Church of Jesus Christ 712 Union Avenue	Bakersfield (Northeast Bakersfield District)
38	Baker Street Church of Christ 200 Baker Street	Bakersfield (Northeast Bakersfield District)
39	Bethany United Methodist Church 407 Baker Street	Bakersfield (Northeast Bakersfield District)
40	Bakersfield Health Services 609 E 18th Street	Bakersfield (Northeast Bakersfield District)
41	Apostolic Evangelistic Faith Church 900 Baker Street	Bakersfield (Northeast Bakersfield District)
42	Al Farooq Islamic Center 615 Kentucky Street	Bakersfield (Northeast Bakersfield District)
43	Calvary Baptist Church 623 Niles Street	Bakersfield (Northeast Bakersfield District)

Facility No. <sup>1</sup>	Name/Address	Jurisdiction
44	Baker Branch 1400 Baker Street	Bakersfield (Northeast Bakersfield District)
45	Trinity United Methodist Church 724 Niles Street	Bakersfield (Northeast Bakersfield District)
46	Iglesia de Dios Pentecostal 800 Monterey Street	Bakersfield (Northeast Bakersfield District)
47	La Trinidad Church No address available	Bakersfield (Northeast Bakersfield District)
48	East Bakersfield Post Office 727 Kentucky Street	Bakersfield (Northeast Bakersfield District)
49	City 2 – Bakersfield Fire Station Northeast District 716 E 21st Street	Bakersfield (Northeast Bakersfield District)
50	Bakersfield Rescue Mission 816 E 21st Street	Bakersfield (Northeast Bakersfield District)
51	Bessie E. Owens Intermediate School 815 Eureka Avenue	Bakersfield (Northeast Bakersfield District)
52	Full Gospel Lighthouse 800 Butte Street	Bakersfield (Northeast Bakersfield District)
53	Grace Pentecostal Tabernacle 209 Beale Avenue	Bakersfield (Northeast Bakersfield District)
54	Dr. Martin Luther King Park 1000 S Owens Street	Bakersfield (Northeast Bakersfield District)
55	Bessie E. Owens Primary School 815 Potomac Avenue	Bakersfield (Northeast Bakersfield District)
56	Martin Luther King Community Center 1000 S Owens Street	Bakersfield (Northeast Bakersfield District)
57	East Bakersfield Dental Clinic 1125 E California Avenue	Bakersfield (Northeast Bakersfield District)
58	Chapel of Praise Church of God in Christ 1223 Dolores Street	Bakersfield (Northeast Bakersfield District)
59	Saints Memorial Church of God in Christ No address available	Bakersfield (Northeast Bakersfield District)
60	Faith Lighthouse 1230 Monterey Street	Bakersfield (Northeast Bakersfield District)
61	Bakersfield Homeless Shelter 1600 E Truxtun Ave	Bakersfield (Northeast Bakersfield District)
62	Vanguard Community Center 1701 Niles Street	Bakersfield (Northeast Bakersfield District)
63	Williams Elementary School 1201 Williams Street	Bakersfield (Northeast Bakersfield District)
64	Livingstone Church 1631 Lake Street	Bakersfield (Northeast Bakersfield District)
65	Niles Assembly of God Church 1701 Niles Street	Unincorporated Kern County (Northeast Bakersfield District)

Facility No. <sup>1</sup>	Name/Address	Jurisdiction
66	My God Is Real Ministries 1900 Potomac Avenue	Unincorporated Kern County (Northeast Bakersfield District)
67	Chapman Street Roman Catholic Church 823 Chapman Street	Unincorporated Kern County (Northeast Bakersfield District)
68	Polyclinic Medical Center 2145 Niles Street	Unincorporated Kern County (Northeast Bakersfield District)
69	Mt. Vernon Elementary School 2161 Potomac Avenue	Unincorporated Kern County (Northeast Bakersfield District)
70	Trinity Baptist Church 723 Mount Vernon Avenue	Unincorporated Kern County (Northeast Bakersfield District)
71	Iglesia Centro Cristiano 1027 Mount Vernon Avenue	Unincorporated Kern County (Northeast Bakersfield District)
72	Bethel Christian School 2236 E California Avenue	Unincorporated Kern County (Northeast Bakersfield District)
73	First Free Will Baptist Church 2400 E California Avenue	Unincorporated Kern County (Northeast Bakersfield District)
74	Iglesia Emmanuel 2408 Potomac Avenue	Unincorporated Kern County (Northeast Bakersfield District)
75	Hope Christian Center 201 E Brundage Lane	Unincorporated Kern County (Northeast Bakersfield District)
76	Greater Bakersfield Ministries 2503 Niles Street	Unincorporated Kern County (Northeast Bakersfield District)
77	East Hills Nazarene Church 2503 Niles Street	Unincorporated Kern County (Northeast Bakersfield District)
78	First Southern Hispanic Baptist Church 2657 Niles Street	Unincorporated Kern County (Northeast Bakersfield District)
79	Horace Mann Elementary School 2710 Niles Street	Unincorporated Kern County (Northeast Bakersfield District)
80	Ramon Garza Elementary School 2901 Center Street	Unincorporated Kern County (Northeast Bakersfield District)
81	Sierra Middle School 3017 Center Street	Unincorporated Kern County (Northeast Bakersfield District)
82	Potomac Park 2905 Potomac Avenue	Unincorporated Kern County (Northeast Bakersfield District)
83	Virginia Avenue Elementary School 3301 Virginia Avenue	Unincorporated Kern County (Northeast Bakersfield District)
84	Calvary Gospel Tabernacle 424 Sterling Road	Unincorporated Kern County (Northeast Bakersfield District)
85	East Bakersfield Pentecostal Holiness Church No address available	Unincorporated Kern County (Northeast Bakersfield District)
86	Unitarian Universalist Fellowship of Kern County 98 Sterling Road	Unincorporated Kern County (Northeast Bakersfield District)
87	Unitarian Universalist Fellowship of Kern County 98 Sterling Road	Unincorporated Kern County (Northeast Bakersfield District)

Facility No. <sup>1</sup>	Name/Address	Jurisdiction
88	Pioneer Drive Elementary School 4404 Pioneer Drive	Unincorporated Kern County (Northeast Bakersfield District)
89	Pioneer County Park 4929 Pioneer Drive	Unincorporated Kern County (Northeast Bakersfield District)
90	Ruggenberg Career Center 610 Ansol Lane	Unincorporated Kern County (Northeast Bakersfield District)
91	Crestwood Psychiatric Health Facility 6700 Eucalyptus Drive	Unincorporated Kern County (Northeast Bakersfield District)
92	Foothill High School 501 Park Drive	Unincorporated Kern County (Northeast Bakersfield District)
93	Church of Jesus Christ of Latter-Day Saints 851 Monica Street	Unincorporated Kern County (Northeast Bakersfield District)
94	Edison Middle School 721 Edison Road	Edison
95	Kern County Fire Station 45 11809 Edison Highway	Edison
96	First Baptist Church Edison 916 Walter Avenue	Edison
97	Edison Post Office 12299 Edison Highway	Edison
98	Eden Academy 30100 Oak Court	Keene
99	Kern County Fire Station 11 30356 Woodford-Tehachapi Road	Keene
100	National Chavez Center 27900 Woodford-Tehachapi Road	Keene
101	New Tehachapi Hospital (expected to open in Fall 2016) North Challenger Drive	Tehachapi
102	Tehachapi Municipal Airport 314 N Hayes Street	Tehachapi
103	Benz Youth Sports and Culture Park 20537 Tehachapi Willow Springs Road	Tehachapi
104	Calvary Bible Fellowship 15719 Highline Road	Tehachapi
105	Willow Springs International Raceway 3500 75th Street W	Rosamond
106	Lancaster Water Reclamation Plant 1865 W Avenue D	Lancaster
107	City of Lancaster Maintenance Yard 615 W Avenue H	Lancaster
108	Mariposa Park 45755 N Fig Avenue	Lancaster
109	Mariposa Elementary School 737 W Avenue H-6	Lancaster

Facility No. <sup>1</sup>	Name/Address	Jurisdiction
110	Whit Carter Park 45635 Sierra Highway	Lancaster
111	Phoenix Community Day School 228 E Avenue H-8	Lancaster
112	Trinity Community Church 45361 Trevor Avenue	Lancaster
113	Iglesia De Cristo 45314 Beech Avenue	Lancaster
114	Power of Praise Ministries 659 W Avenue I	Lancaster
115	Antelope Valley Seventh-day Adventist School 45002 Fern Avenue	Lancaster
116	Sacred Heart School 625 W Kettering Street	Lancaster
117	Sacred Heart Catholic Church 565 W Kettering Street	Lancaster
118	Mays Field 45000 3rd Street E	Lancaster
119	Fire Station 33 – Battalion Headquarters 44947 Date Avenue	Lancaster
120	Lancaster City Hall 44933 Fern Avenue	Lancaster
121	Los Angeles County Sheriff's Department Lancaster Station 501 W Lancaster Boulevard	Lancaster
122	Antelope Valley High School 44900 N Division Street	Lancaster
123	Museum of Art and History 665 W Lancaster Boulevard	Lancaster
124	Lancaster Library 601 W Lancaster Boulevard	Lancaster
125	Cedar Post Office 567 W Lancaster Boulevard	Lancaster
126	Western Hotel Museum 557 W Lancaster Boulevard	Lancaster
127	AV Life Church 540 W Lancaster Boulevard	Lancaster
128	Antelope Valley Christian Center 304 W Lancaster Boulevard	Lancaster
129	Living Word Fellowship Church 224 W Lancaster Boulevard	Lancaster
130	Lancaster Performing Arts Center 750 W Lancaster Boulevard	Lancaster
131	First Church of Christ, Scientist 44802 Fern Avenue	Lancaster



Facility No. <sup>1</sup>	Name/Address	Jurisdiction
132	Solid Rock Bible Church 560 W Milling Street	Lancaster
133	Lancaster Metrolink Station 44738 Sierra Highway	Lancaster
134	Spirit & Truth Missionary Baptist 44722 Yucca Avenue	Lancaster
135	Lancaster Religious Science 44702 Cedar Avenue	Lancaster
136	Desert Montessori Academy 44503 Fern Avenue	Lancaster
137	Templo de Restauracion 44601 Division Street	Lancaster
138	Saint Hillrie Church of God 628 W Oldfield Street	Lancaster
139	Jane Reynolds Park/Webber Pool 716 Oldfield Street	Lancaster
140	St. Columba's Anglican Church 44405 Fig Avenue	Lancaster
141	Life Source International Charter School 44339 Beech Avenue	Lancaster
142	Lancaster Alternative and Virtual Academy 44310 Hardwood Avenue	Lancaster
143	University of Antelope Valley 44055 Sierra Highway	Lancaster
144	Joshua Elementary School 43926 2nd Street E	Lancaster
145	Fire Station 129 – Division Headquarters 42110 6th Street W	Lancaster
146	Graceful Palms Hospice & Palliative Care 40015 Sierra Highway, Suite B280	Palmdale
147	Desert Sands Park 39117 3rd Street E	Palmdale
148	Palmdale Metrolink Station 39000 Clock Tower Plaza Drive	Palmdale
149	Rex Parris High School 38801 Clock Tower Plaza Drive E	Palmdale
150	True Vine Gospel Church 859 E Avenue Q	Palmdale
151	Los Angeles County Sheriff Palmdale Station 1020 E Palmdale Boulevard	Palmdale
152	First Baptist Church of Palmdale 1037 E Palmdale Boulevard	Palmdale
153	Palmdale City Library 700 E Palmdale Boulevard	Palmdale

Facility No. <sup>1</sup>	Name/Address	Jurisdiction
154	Palmdale Public Safety Department 38306 9th Street E	Palmdale
155	County Fire Station #37 Palmdale 38318 9th Street E	Palmdale
156	Foursquare Church of Palmdale 38335 10th Street E	Palmdale
157	Palmdale School District 38238 10th Street E	Palmdale
158	Courson Park 38226 10th Street E	Palmdale

Sources: City of Bakersfield (2016), City of Lancaster (2016), City of Palmdale (2016), City of Tehachapi (2016), Google Maps (for churches) (2016) and United States Postal Service (2016)

<sup>1</sup> Refer to

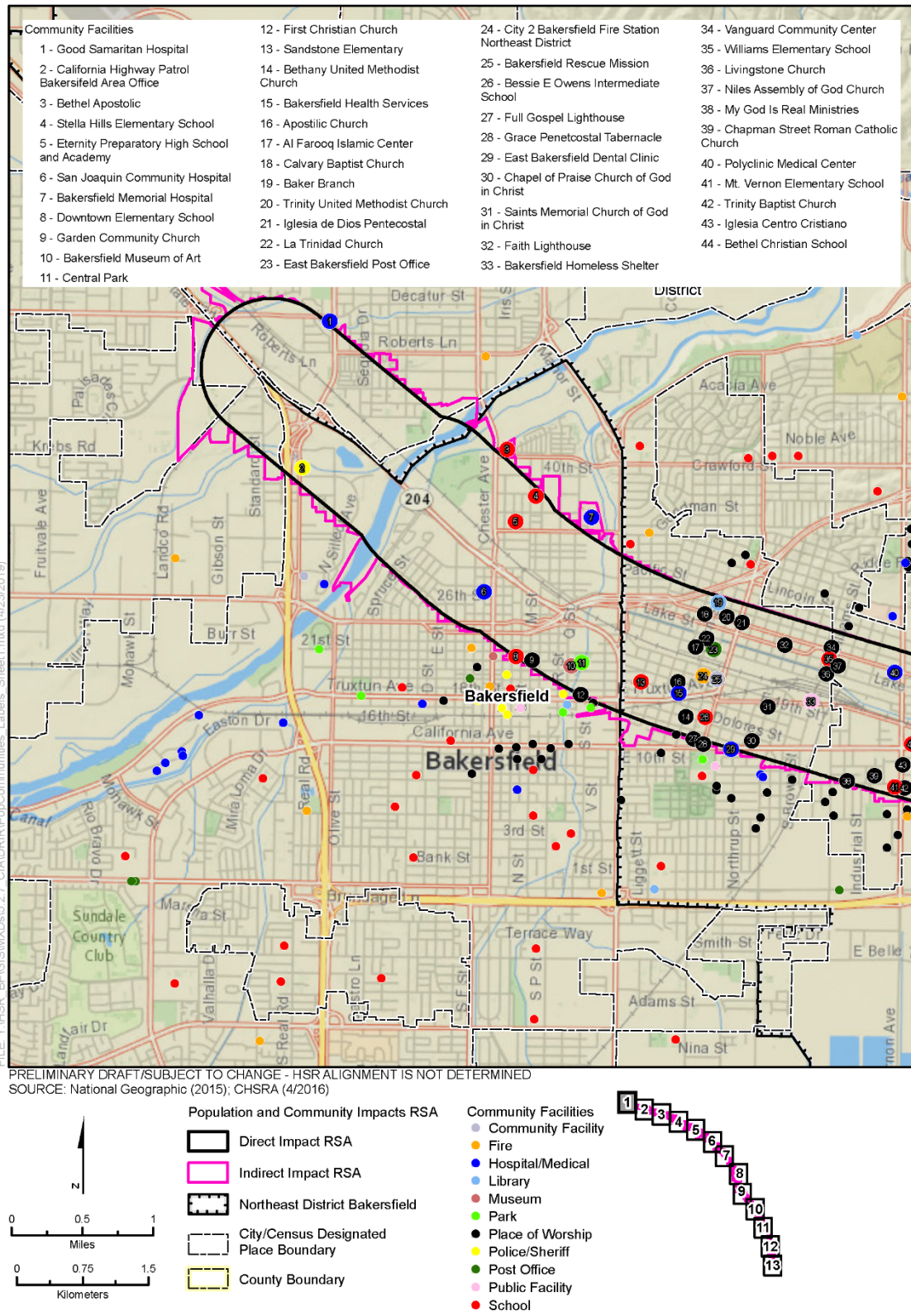


Figure 3.12-A-1 for the locations of the community facilities cited in this table.  
 RSA = resource study area



**Table 3.12-A-2 Existing and Proposed Bicycle Lanes**

Facility	Location	Type of Bicycle Lane		City/Community
		Existing	Proposed	
Breckenridge Road	Morning Drive to Comanche Road	Class III	–	Bakersfield
Brundage Lane	Wible Road to Edison Highway	Class III	–	Bakersfield
Edison Road	South of Kern Canyon Road to Edison Highway	Class III	–	Bakersfield
Fairfax Road	Auburn Street to Brundage Lane	–	Class II	Bakersfield
Kentucky Street	Oswell Street to Mt. Vernon Avenue	Class III	–	Bakersfield
SR 184 (Morning Drive)	Highland Knolls Drive to Brundage Lane	–	Class II	Bakersfield
Oswell Street	Columbus Street to Brundage Lane	–	Class II	Bakersfield
Sterling Road	College Avenue to Brundage Lane	–	Class III	Bakersfield
Vineland Road	Kern Canyon Road to Edison Highway	–	Class III	Bakersfield
Virginia Avenue/ Deacon Avenue	Real Road to Fairfax Road	–	Class III	Bakersfield
SR 184 (Weedpatch Highway)	Panama Road to Brundage Lane	–	Unknown Class Type	Bakersfield
Comanche Road	Breckenridge Road to E Panama Lane	Class III	–	Edison
Edison Highway	S Comanche Road to Towerline Road	Class III	–	Edison
Edison Highway	Washington Street to S Comanche Drive	–	Unknown Class Type	Edison
Challenger Path	N Mills Street to Dennison Drive	–	Class I	Tehachapi
Burnett Road	Dennison Drive to Appaloosa Court	–	Class II	Tehachapi
Dennison Drive	Challenger Drive to Highline Road	–	Class II	Tehachapi
E Tehachapi Boulevard	Mt. View Avenue to E Valley Boulevard	–	Class II	Tehachapi
E Steuber Road	E Tehachapi Boulevard to Highline Road	–	Class II	Tehachapi
Sierra Highway	W Avenue J to Technology Drive	Class I	–	Lancaster
W Avenue K-8	Gadsden Avenue to Sierra Highway	–	Class II	Lancaster
Orange Street	51st Street W to 10th Street W	–	Class II	Lancaster
10th Street W	Avenue H W to W Avenue J-4	–	Class II	Lancaster
5th Street E	E Avenue J-9 to E Avenue K-12	–	Class III	Lancaster
Avenue L	Sierra Highway to 4th Street E/Business Center Parkway	Class II	–	Lancaster
Capital Drive	E Avenue K-12 to Business Center Parkway	–	Class II	Lancaster
Division Street	Sierra Highway to W Avenue J	–	Class II	Lancaster
Division Street	E Avenue J to E Avenue M	Class II	–	Lancaster
E Avenue H	30th Street W to 40th Street E	–	Class II	Lancaster
E Avenue H-8	Division Street to 7th Street E	–	Class II	Lancaster
E Avenue J-8/J-9	Division Street to E Avenue J-8	–	Class III	Lancaster

Facility	Location	Type of Bicycle Lane		City/Community
		Existing	Proposed	
E Avenue K-8	Division Street to 35th Street E	–	Class II	Lancaster
E Avenue L	4th Street E to 30th Street E	–	Class II	Lancaster
E Avenue L	Sierra Highway to 30th Street E	–	Class I	Lancaster
E Lancaster Boulevard	Division Street to 5th Street E	Class II	–	Lancaster
Fern Avenue	W Avenue I to W Avenue J	–	Class III	Lancaster
Fig Avenue	Lancaster Boulevard to W Avenue J-8	–	Class III	Lancaster
Unnamed	W Avenue L to W Avenue M	–	Class I	Lancaster
Unnamed	W Avenue K-8 to W Avenue L	–	Class II	Lancaster
Sierra Highway	Avenue H to W Avenue J	–	Class II	Lancaster
South of W Avenue K-8	10th Street W to Sierra Highway	Class I	–	Lancaster
W Avenue G	Antelope Valley Freeway to W Avenue I	–	Class I	Lancaster
W Avenue H-8	21st Street W to Beech Avenue	–	Class III	Lancaster
W Avenue I	70th Street W to 40th Street E	–	Class II	Lancaster
W Avenue J	65th Street W to 40th Street E	–	Class II	Lancaster
W Avenue J-8/J-7	12th Street W to Sierra Highway		Class III	Lancaster
W Avenue K	10th Street W to 40th Street E	–	Class II	Lancaster
W Avenue L-8	12th Street W to Sierra Highway	–	Class II	Lancaster
W Avenue L-8	20th Street W to Sierra Highway	–	Class II	Lancaster
W Avenue M	Columbia Way to E Avenue L	–	Class II	Lancaster
W Lancaster Boulevard	10th Street W to Sierra Highway	–	Class III	Lancaster
W Lancaster Boulevard	Sierra Highway to Division Street	–	Class II	Lancaster
W Newgrove Street	12th Street W to Sierra Highway	–	Class III	Lancaster
E Avenue K-8	Sierra Highway	–	Class II	Lancaster
10th Street E	E Avenue Q to E Avenue Q-3	Class II	–	Palmdale
6th Street E and 5th Street E	E Avenue Q to E Avenue R	Class II	–	Palmdale
Avenue N	10th Street W to Sierra Highway		Unknown Class Type	Palmdale
Clock Tower Plaza Drive	E Avenue P-14 to 6th Street E	Class II	–	Palmdale
E Avenue M	W Avenue M to 6th Street E	–	Unknown Class Type	Palmdale
E Avenue O	West of Delta Lane to Sierra Highway	–	Unknown Class Type	Palmdale
E Avenue P	10th Street E to Sierra Highway	–	Unknown Class Type	Palmdale

Facility	Location	Type of Bicycle Lane		City/Community
		Existing	Proposed	
E Avenue Q	Sierra Highway to 11th Street E	–	Unknown Class Type	Palmdale
E Avenue Q	Carolside Avenue to 4th Street E	–	Unknown Class Type	Palmdale
E Avenue Q	4th Street E to 6th Street E	Class II	Unknown Class Type	Palmdale
Unnamed	W Avenue M to 10th Street W	–	Unknown Class Type	Palmdale
Sierra Highway	W Avenue J-8 to W Avenue M	–	Sierra Highway Bike Path	Palmdale
Sierra Highway	W Avenue M to Technology Drive	Class I	Sierra Highway Bike Path	Palmdale
Sierra Highway	Technology Drive to E Avenue P-14	Class II	–	Palmdale
Sierra Highway	E Avenue L-12 to E Avenue M	–	Sierra Highway Bike Path	Palmdale
Technology Drive	Division Street to Sierra Highway	–	Unknown Class Type	Palmdale

Class I (Bike Path) = Provides a completely separated right-of-way for the exclusive use of bicyclists, pedestrians, and others using nonmotorized modes of travel.

Class II (Bike Lane) = Provides a striped lane for one-way bike travel on a roadway.

Class III (Signed Bike Route) = Provides for shared use with motor vehicle traffic.

SR = State Route