

# LAND USE MASTER PLAN (LaMP)

Margaret Cederoth  
Director of Planning and Sustainability  
October 15, 2020



## Land Use Master Plan

- » Parcel Review Process and Criteria
- » Real Property View
- » Results
- » Governance and Implementation

# LAND USE MASTER PLAN

A strategic review of the Authority's land portfolio



## Land Use Master Plan

- Strategic look at ROW inventory
- Cross-functional review process
- Relied on technical criteria

## Outcomes

- » Parcels with **strategic purpose**
- » Parcels that can be moved into the **disposal** process



# LAND USE MASTER PLAN

A strategic review of the Authority's land portfolio



## Land Use Master Plan

- Strategic look at ROW inventory
- Cross-functional review process
- Relied on technical criteria

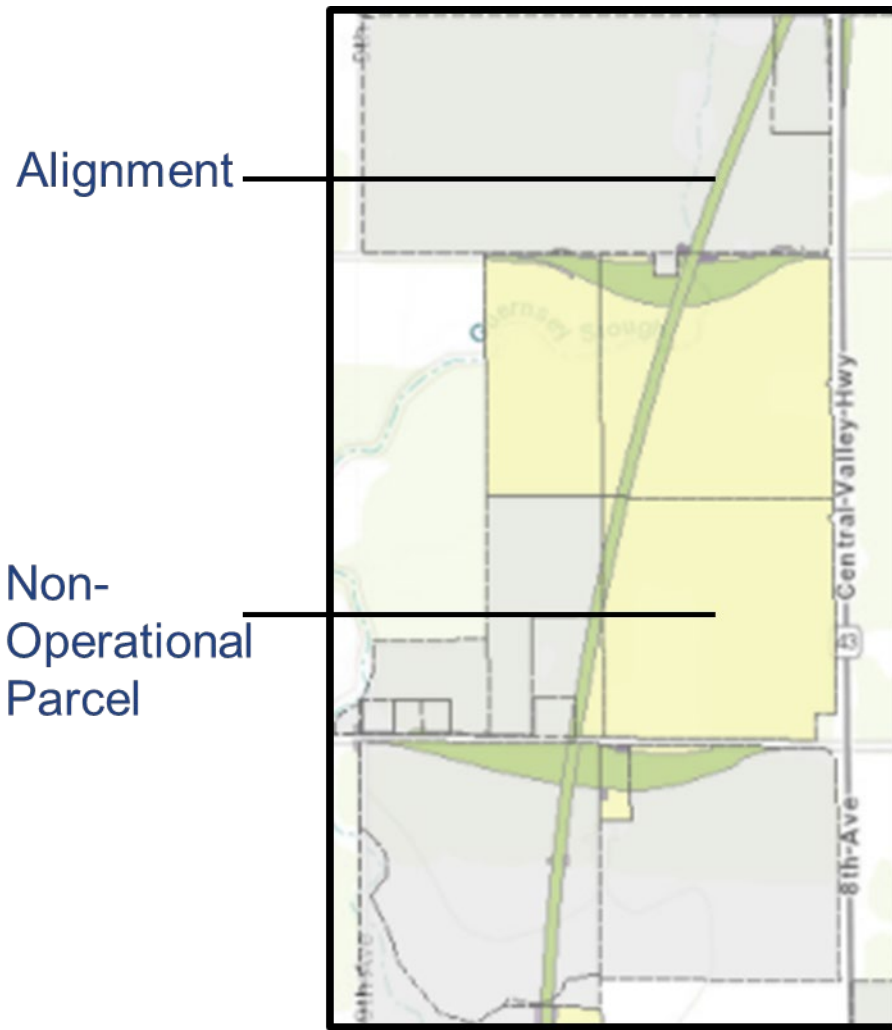
## Outcomes

- » Parcels with **strategic purpose**
- » Parcels that can be moved into a **disposal** process



# LAND USE MASTER PLAN

A strategic review of the Authority's land portfolio



## Land Use Master Plan

- Strategic look at ROW inventory
- Cross-functional review process
- Relied on technical criteria

## Outcome

- » Parcels with **strategic purpose**
- » Parcels that can be moved into a **disposal** process



# REAL PROPERTY VIEW

The LaMP layers are used in real time by a range of Authority teams.

**Real Property View (Beta) V 1.0**

Find address or place

**Layer List**

Layers

- Utilities
- RealPropertyMapper\_WM
- Land Use Master Plan
- HSR Stations
- Potential for Disposal
- Suitable for Development
- Operational - Station Site
- Operational - Station Adjacent
- Operational - Environmental Mitigation
- ROW Parcel (2/14/2020)
- Analysis Data
- Traction Power Sub-station
- Important Farmland
- Special Status Species Habitat Impacts
- Population Density (per sq. mi.)
- Population Density Range of Non-operational Parcels
- Average Household Income
- Average Household Income Range of Non-operational Parcels
- Zoning
- Lease Type
- Current Lease Status

**Enhanced Search**

By Shape | By Value | Results

Search layer: CHSRA ROW Parcels [Clear Fields](#)

Search alias: HST Sub#

Search HST Sub#

HST Sub# contains:

Limit search to map extent



# LAND USE MASTER PLAN PROCESS

Applying Consistent Criteria in Review

## Criteria Filter

Solar development  
General development  
Environmental  
System operations

779 Non-Operational Parcels (~1600 acres)

592 for Disposal

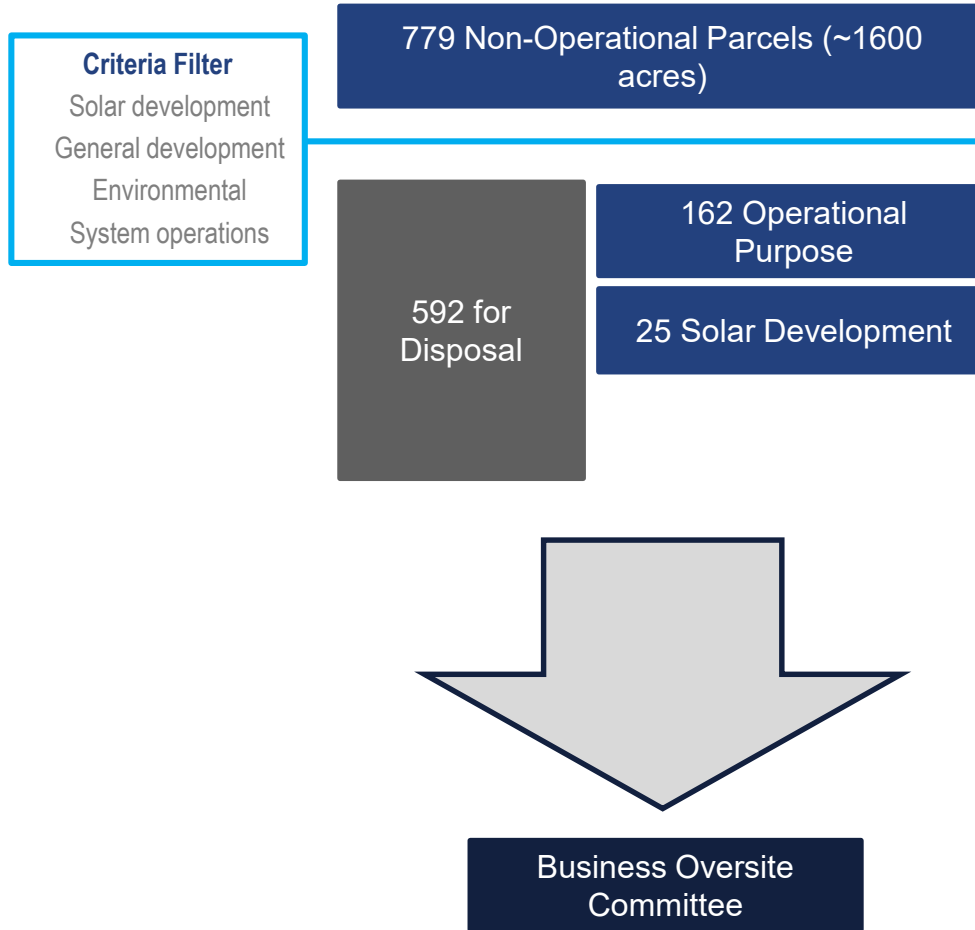
162 Operational Purpose

25 Solar Development



# LAND USE MASTER PLAN PROCESS

Next steps





# LAND USE MASTER PLAN (LaMP)

CALIFORNIA HIGH-SPEED RAIL



## Headquarters

California High-Speed Rail Authority

770 L Street, Suite 800

Sacramento, CA 95814

[www.hsr.ca.gov](http://www.hsr.ca.gov)

