

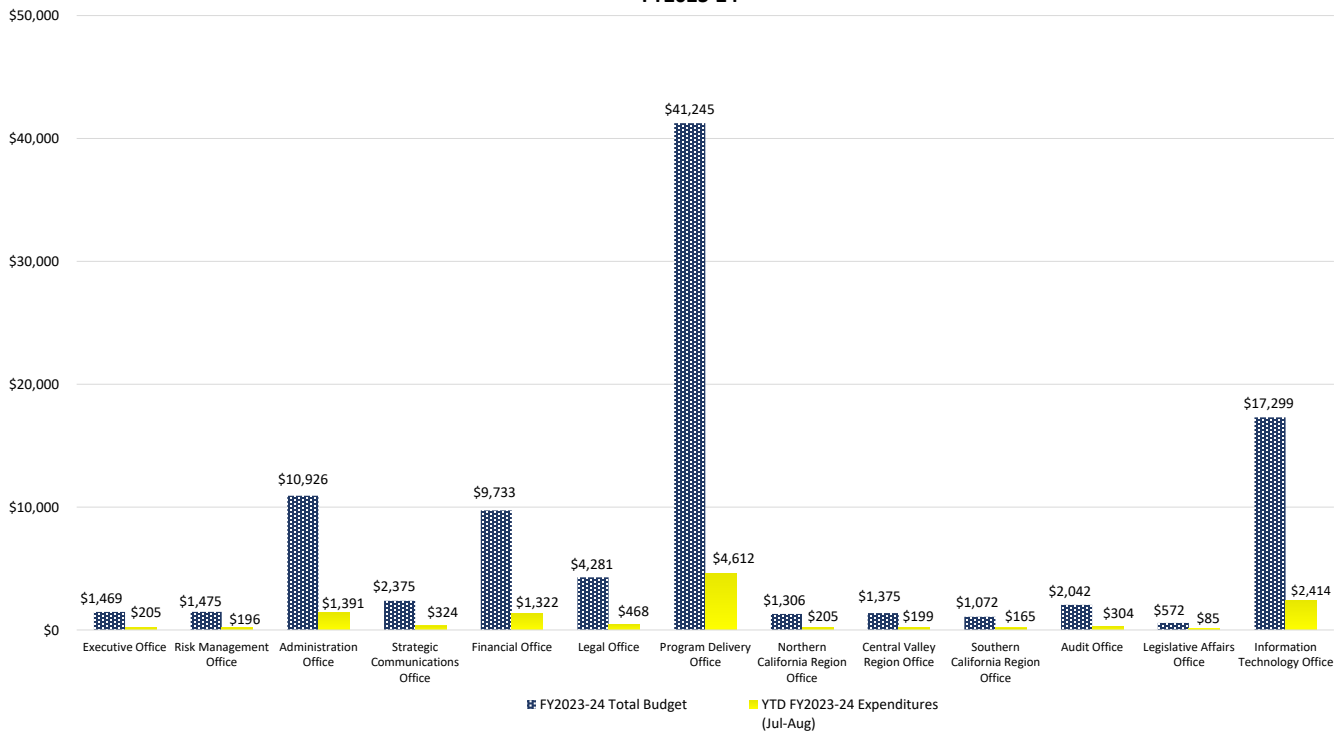
Data through August 31, 2023

Percentage of Fiscal Year Completed: 16.7%

FY2023-24 Administrative Budget and Expenditures Summary

| Current Year 2023-24 (\$ in Thousands) | Notes | FY2023-24 Total Budget A | Monthly Expenditures (Aug) B | YTD FY2023-24 Expenditures (Jul - Aug) C | Total Remaining Budget (A - C) | YTD % of Budget Expended (C / A) | FY2023-24 Forecast (Sep - Jun) D | FY2023-24 YTD Expenditures & Forecast (C + D) |
|---|----------|--------------------------------|---------------------------------------|---|---|---|---|--|
| Executive Office | | \$1,469 | \$115 | \$205 | \$1,264 | 14.0% | \$1,262 | \$1,467 |
| Risk Management Office | | \$1,475 | \$100 | \$196 | \$1,278 | 13.3% | \$1,205 | \$1,401 |
| Administration Office | | \$10,926 | \$815 | \$1,391 | \$9,535 | 12.7% | \$8,784 | \$10,175 |
| Strategic Communications Office | | \$2,375 | \$162 | \$324 | \$2,051 | 13.6% | \$1,992 | \$2,316 |
| Financial Office | | \$9,733 | \$642 | \$1,322 | \$8,411 | 13.6% | \$8,134 | \$9,456 |
| Legal Office | | \$4,281 | \$240 | \$468 | \$3,813 | 10.9% | \$3,648 | \$4,116 |
| Program Delivery Office | | \$41,245 | \$2,340 | \$4,612 | \$36,632 | 11.2% | \$34,029 | \$38,641 |
| Northern California Region Office | | \$1,306 | \$103 | \$205 | \$1,102 | 15.7% | \$1,073 | \$1,277 |
| Central Valley Region Office | | \$1,375 | \$101 | \$199 | \$1,176 | 14.5% | \$1,078 | \$1,277 |
| Southern California Region Office | | \$1,072 | \$85 | \$165 | \$907 | 15.4% | \$898 | \$1,064 |
| Audit Office | | \$2,042 | \$150 | \$304 | \$1,738 | 14.9% | \$1,628 | \$1,932 |
| Legislative Affairs Office | | \$572 | \$42 | \$85 | \$487 | 14.9% | \$454 | \$539 |
| Information Technology Office | | \$17,299 | \$1,629 | \$2,414 | \$14,885 | 14.0% | \$14,366 | \$16,780 |
| TOTAL | 1 | \$95,170 | \$6,523 | \$11,890 | \$83,280 | 12.5% | \$78,553 | \$90,442 |

**Expenditures vs. Total Budget
 FY2023-24**



#

Footnotes

1 Statewide employee bargaining contracts are negotiated with the Administration on a periodic basis. Changes to these agreements impact the Authority's budget and updates to the budget are reflected subsequently at the appropriate reporting time. In some instances, forecast can exceed budget due to timing but will ultimately be trued up once DOF approves the additional funding.

Data through August 31, 2023

Percentage of Fiscal Year Completed: 16.7%

**FY2023-24 Administrative Budget Expenditures Summary
 by Line Item Detail**

| Description | Notes | FY2023-24 Total Budget | Monthly Expenditures (Aug) | YTD Expenditures (Jul - Aug) | Total Remaining Budget | FY2023-24 Forecast (Sep - Jun) | YTD Expenditures & Forecast |
|---|----------|------------------------------|----------------------------------|------------------------------------|------------------------------|--------------------------------------|-----------------------------------|
| Salaries and Wages | 1 | \$49,944,664 | \$3,498,070 | \$7,031,819 | \$42,912,845 | \$40,938,123 | \$47,969,942 |
| Benefits | 1 | \$26,395,021 | \$1,818,227 | \$3,645,331 | \$22,749,690 | \$19,996,830 | \$23,642,161 |
| TOTAL PERSONAL SERVICES | 1 | \$76,339,685 | \$5,316,297 | \$10,677,151 | \$65,662,534 | \$60,934,953 | \$71,612,104 |
| General Expense | | \$549,354 | \$7,908 | \$7,908 | \$541,446 | \$541,446 | \$549,354 |
| Board Costs | | \$49,000 | \$2,470 | \$2,470 | \$46,530 | \$46,530 | \$49,000 |
| Printing | | \$238,000 | \$1,625 | \$1,625 | \$236,375 | \$236,375 | \$238,000 |
| Communications | | \$651,000 | \$37,560 | \$37,560 | \$613,440 | \$613,440 | \$651,000 |
| Postage | | \$20,000 | \$636 | \$636 | \$19,364 | \$19,364 | \$20,000 |
| Travel, In-State | | \$736,184 | \$62,107 | \$62,107 | \$674,077 | \$674,077 | \$736,184 |
| Travel, Out-Of-State | | \$73,916 | \$5 | \$5 | \$73,911 | \$73,911 | \$73,916 |
| Training | | \$476,667 | \$11,700 | \$11,700 | \$464,967 | \$464,967 | \$476,667 |
| Rent - Building and Grounds | | \$3,116,000 | \$222,807 | \$222,871 | \$2,893,129 | \$2,893,129 | \$3,116,000 |
| Consulting and Professional Services: Interdepartmental | | \$3,452,715 | \$3,780 | \$3,780 | \$3,448,935 | \$3,448,935 | \$3,452,715 |
| Consulting and Professional Services: External | | \$4,783,479 | \$76,463 | \$81,929 | \$4,701,550 | \$4,701,550 | \$4,783,479 |
| Consolidated Data Centers | | \$1,963,000 | \$11,590 | \$11,590 | \$1,951,410 | \$1,951,410 | \$1,963,000 |
| Information Technology | | \$2,721,000 | \$768,315 | \$768,315 | \$1,952,685 | \$1,952,685 | \$2,721,000 |
| TOTAL OPERATING EXP AND EQUIP | | \$18,830,315 | \$1,206,967 | \$1,212,497 | \$17,617,818 | \$17,617,818 | \$18,830,315 |
| TOTALS | 1 | \$95,170,000 | \$6,523,264 | \$11,889,648 | \$83,280,352 | \$78,552,771 | \$90,442,419 |

| Category | Percentage |
|--|--------------|
| Percentage of Personal Services Budget Expended | 14.0% |
| Percentage of Operating Expenses & Equipment Budget Expended | 6.4% |
| Percentage of Total Budget Expended | 12.5% |
| Percentage of Fiscal Year Completed | 16.7% |

#

Footnotes

1 Statewide employee bargaining contracts are negotiated with the Administration on a periodic basis. Changes to these agreements impact the Authority's budget and updates to the budget are reflected subsequently at the appropriate reporting time. In some instances, forecast can exceed budget due to timing but will ultimately be trued up once DOF approves the additional funding.

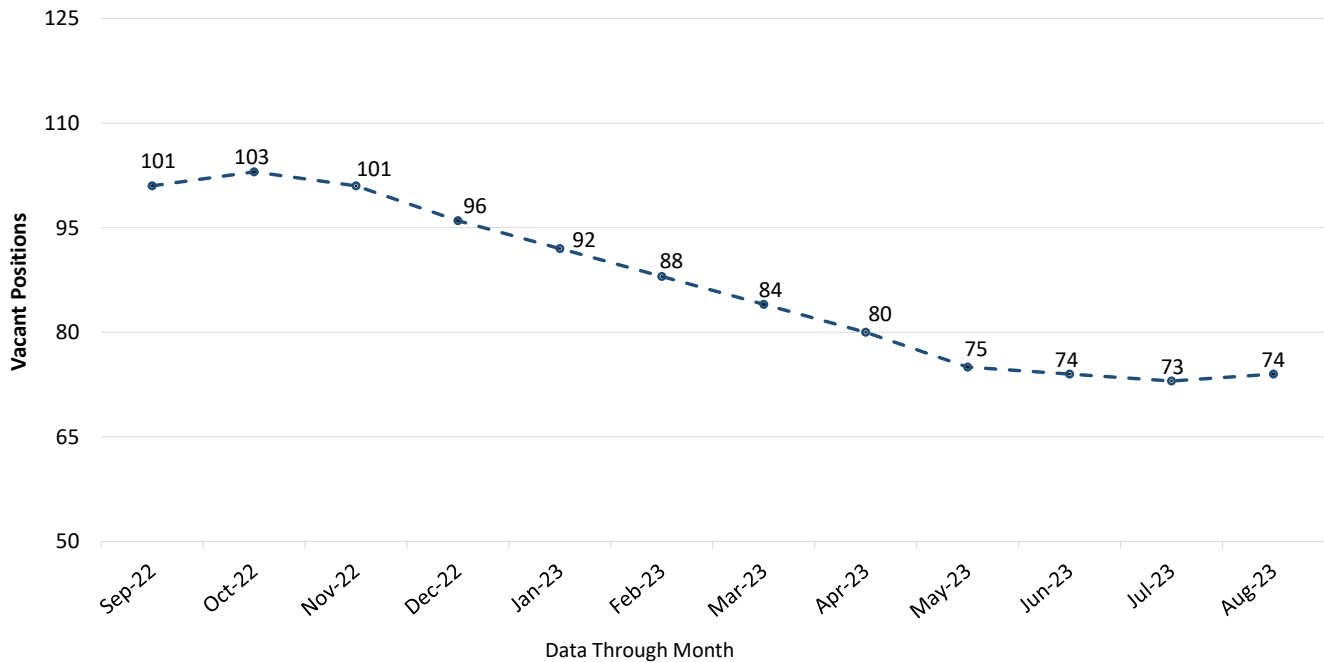
Data through August 31, 2023

Percentage of Fiscal Year Completed: 16.7%

FY2023-24 Position Summary
 All Offices

| All Offices | Notes | Total Authorized Positions | Total Filled Positions | Prior Month Vacant Positions | Prior Month Vacancy Rate | Total Vacant Positions | Total Vacancy Rate |
|-----------------------------------|-------|----------------------------|------------------------|------------------------------|--------------------------|------------------------|--------------------|
| Executive Office | | 4.0 | 4.0 | 1.0 | 25.0% | 0.0 | 0.0% |
| Risk Management Office | | 6.0 | 5.0 | 1.0 | 16.7% | 1.0 | 16.7% |
| Administration Office | | 53.0 | 46.0 | 6.0 | 11.3% | 7.0 | 13.2% |
| Strategic Communications Office | | 13.0 | 12.0 | 1.0 | 7.7% | 1.0 | 7.7% |
| Financial Office | | 60.0 | 53.0 | 5.0 | 8.3% | 7.0 | 11.7% |
| Legal Office | | 13.0 | 12.0 | 1.0 | 7.7% | 1.0 | 7.7% |
| Program Delivery Office | | 173.0 | 127.0 | 46.0 | 26.6% | 46.0 | 26.6% |
| Northern California Region Office | | 8.0 | 6.0 | 2.0 | 25.0% | 2.0 | 25.0% |
| Central Valley Region Office | | 8.0 | 7.0 | 1.0 | 12.5% | 1.0 | 12.5% |
| Southern California Region Office | | 6.0 | 6.0 | 0.0 | 0.0% | 0.0 | 0.0% |
| Audit Office | | 13.0 | 12.0 | 1.0 | 7.7% | 1.0 | 7.7% |
| Legislative Affairs Office | | 3.0 | 3.0 | 0.0 | 0.0% | 0.0 | 0.0% |
| Information Technology Office | | 69.0 | 62.0 | 8.0 | 11.6% | 7.0 | 10.1% |
| Total | | 429.0 | 355.0 | 73.0 | 17.0% | 74.0 | 17.2% |

Vacancies Trend



Data through August 31, 2023

Percentage of Fiscal Year Completed: 16.7%

FY2023-24 Vacancy Report
 All Offices

| Office | Notes | Total Vacant Positions |
|--|----------|------------------------|
| Risk Management Office | | |
| Senior Transportation Engineer | | 1.0 |
| Risk Management Office Total | | 1.0 |
| Administration Office | | |
| Staff Services Manager II (Managerial) | | 1.0 |
| Staff Services Manager II (Supervisory) | | 2.0 |
| Personnel Specialist | | 1.0 |
| Associate Governmental Program Analyst | | 2.0 |
| Office Technician (Typing) | | 1.0 |
| Administration Office Total | | 7.0 |
| Strategic Communications Office | | |
| Associate Governmental Program Analyst | | 1.0 |
| Strategic Communications Office Total | | 1.0 |
| Financial Office | | |
| Deputy Director of Business Analytics and Strategic Planning | | 1.0 |
| Staff Services Manager III | | 1.0 |
| Staff Services Manager I | | 2.0 |
| Associate Governmental Program Analyst | | 1.0 |
| Accounting Officer (Specialist) | | 1.0 |
| Staff Services Analyst | | 1.0 |
| Financial Office Total | | 7.0 |
| Legal Office | | |
| Attorney III | | 1.0 |
| Legal Office Total | | 1.0 |
| Program Delivery Office | | |
| Director of Engineering | | 1.0 |
| Director of Environmental Services | | 1.0 |
| Deputy Director of Real Property (CEA) | | 1.0 |
| Director of Contracts Administration (CEA) | | 1.0 |
| C.E.A B | | 1.0 |
| C.E.A | | 2.0 |
| Principal Transportation Engineer | | 2.0 |
| Senior Land Surveyor | | 1.0 |
| Supervising Transportation Engineer | | 7.0 |
| Supervising Transportation Planner | | 1.0 |
| Senior Transportation Electrical Engineer | | 1.0 |
| Senior Transportation Engineer | | 10.0 |
| Transportation Engineer (Civil) | | 1.0 |
| Senior Environmental Scientist (Supervisory) | | 1.0 |
| Principal Transportation Planner | | 1.0 |
| Associate Right of Way Agent | | 2.0 |
| Senior Right of Way Agent | | 1.0 |
| Supervising Environmental Planner | | 1.0 |
| Staff Services Manager II | | 1.0 |
| Staff Services Manager I | | 1.0 |
| Structural Design Technician II | | 1.0 |
| Associate Governmental Program Analyst | | 4.0 |
| Administrative Assistant II | | 1.0 |
| Staff Services Analyst | | 2.0 |
| Program Delivery Office Total | | 46.0 |
| Northern California Region Office | | |
| Information Officer II | | 1.0 |
| Associate Governmental Program Analyst | | 1.0 |
| Northern California Region Office Total | | 2.0 |
| Central Valley Region Office | | |
| Associate Governmental Program Analyst | | 1.0 |
| Central Valley Region Office Total | | 1.0 |
| Audit Office | | |
| Staff Management Auditor | | 1.0 |
| Audit Office Total | | 1.0 |
| Information Technology Office | | |
| Information Technology Supervisor II | | 1.0 |
| Information Technology Specialist I | | 2.0 |
| Information Technology Associate | | 3.0 |
| Graphic Designer II | | 1.0 |
| Information Technology Office Total | | 7.0 |
| Total Vacancies | 3 | 74.0 |

#

Footnotes

3 This report reflects State employees only.