

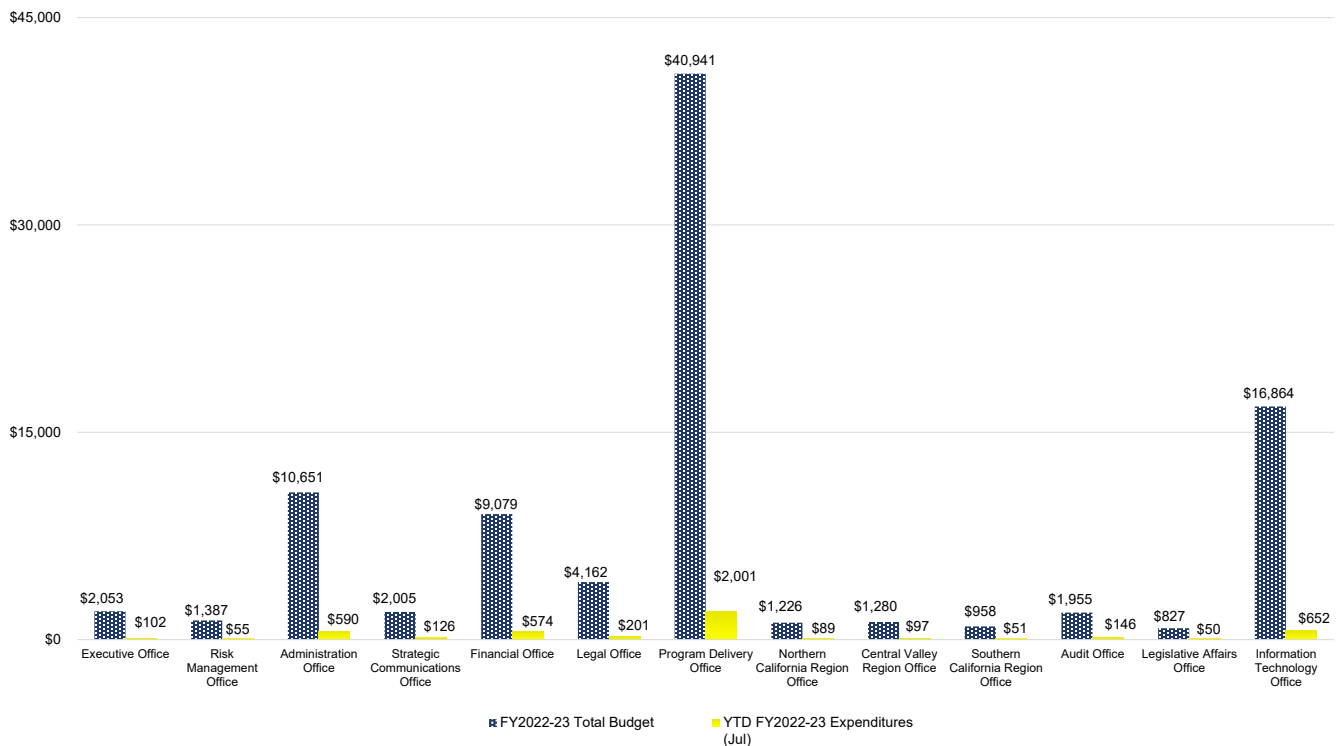
Data through July 31, 2022

Percentage of Fiscal Year Completed: 8.3%

**FY2022-23 Administrative Budget and Expenditures Summary**

Current Year 2022-23 (\$ In Thousands)	Notes	FY2022-23 Total Budget A	Monthly Expenditures (Jul) B	YTD FY2022-23 Expenditures (Jul) C	Total Remaining Budget (A - C)	YTD % of Budget Expended (C / A)	FY2022-23 Forecast (Aug - Jun) D	FY2022-23 YTD Expenditures & Forecast (C + D)
Executive Office		\$2,053	\$102	\$102	\$1,951	5.0%	\$1,838	\$1,939
Risk Management Office	9	\$1,387	\$55	\$55	\$1,333	3.9%	\$954	\$1,009
Administration Office		\$10,651	\$590	\$590	\$10,061	5.5%	\$9,642	\$10,232
Strategic Communications Office		\$2,005	\$126	\$126	\$1,879	6.3%	\$1,832	\$1,958
Financial Office		\$9,079	\$574	\$574	\$8,505	6.3%	\$7,955	\$8,529
Legal Office		\$4,162	\$201	\$201	\$3,961	4.8%	\$3,715	\$3,916
Program Delivery Office		\$40,941	\$2,001	\$2,001	\$38,940	4.9%	\$34,249	\$36,250
Northern California Region Office		\$1,226	\$89	\$89	\$1,137	7.2%	\$1,088	\$1,177
Central Valley Region Office		\$1,280	\$97	\$97	\$1,183	7.6%	\$1,111	\$1,208
Southern California Region Office		\$958	\$51	\$51	\$907	5.3%	\$776	\$827
Audit Office		\$1,955	\$146	\$146	\$1,808	7.5%	\$1,693	\$1,840
Legislative Affairs Office		\$827	\$50	\$50	\$777	6.0%	\$768	\$818
Information Technology Office		\$16,864	\$652	\$652	\$16,212	3.9%	\$15,119	\$15,772
<b>TOTAL</b>	<b>1, 9</b>	<b>\$93,388</b>	<b>\$4,733</b>	<b>\$4,733</b>	<b>\$88,655</b>	<b>5.1%</b>	<b>\$80,742</b>	<b>\$85,476</b>

**Expenditures vs. Total Budget  
 FY2022-23**



#

**Footnotes**

- 1 Statewide employee bargaining contracts are negotiated with the Administration on a periodic basis. Changes to these agreements impact the Authority's budget and updates to the budget are reflected subsequently at the appropriate reporting time. In some instances, forecast can exceed budget due to timing but will ultimately be trued up once DOF approves the additional funding.
- 9 In Jul-22, the Authority implemented an organizational change which involved the creation of the Risk Management Office. Risk Management was previously included in the Executive Office.

Data through July 31, 2022

Percentage of Fiscal Year Completed: 8.3%

**FY2022-23 Administrative Budget Expenditures Summary  
 by Line Item Detail**

Description	Notes	FY2022-23 Total Budget	Monthly Expenditures (Jul)	YTD Expenditures (Jul)	Total Remaining Budget	FY2022-23 Forecast (Aug - Jun)	YTD Expenditures & Forecast
Salaries and Wages	1	\$48,039,220	\$3,153,524	\$3,153,524	\$44,885,696	\$40,100,861	\$43,254,385
Benefits	1	\$24,300,728	\$1,573,589	\$1,573,589	\$22,727,140	\$19,599,731	\$21,173,319
<b>TOTAL PERSONAL SERVICES</b>	<b>1</b>	<b>\$72,339,948</b>	<b>\$4,727,112</b>	<b>\$4,727,112</b>	<b>\$67,612,836</b>	<b>\$59,700,592</b>	<b>\$64,427,704</b>
General Expense		\$580,496	\$200	\$200	\$580,296	\$580,296	\$580,496
Board Costs		\$74,000	\$0	\$0	\$74,000	\$74,000	\$74,000
Printing		\$238,000	\$0	\$0	\$238,000	\$238,000	\$238,000
Communications		\$651,000	\$0	\$0	\$651,000	\$651,000	\$651,000
Postage		\$20,000	\$0	\$0	\$20,000	\$20,000	\$20,000
Travel, In-State		\$722,131	\$0	\$0	\$722,131	\$722,131	\$722,131
Travel, Out-Of-State		\$74,869	\$0	\$0	\$74,869	\$74,869	\$74,869
Training		\$479,667	\$0	\$0	\$479,667	\$479,667	\$479,667
Rent - Building and Grounds		\$3,551,000	\$138	\$138	\$3,550,862	\$3,550,862	\$3,551,000
Consulting and Professional Services: Interdepartmental		\$3,569,000	\$0	\$0	\$3,569,000	\$3,569,000	\$3,569,000
Consulting and Professional Services: External		\$6,401,889	\$5,952	\$5,952	\$6,395,937	\$6,395,937	\$6,401,889
Consolidated Data Centers		\$1,963,000	\$0	\$0	\$1,963,000	\$1,963,000	\$1,963,000
Information Technology		\$2,723,000	\$0	\$0	\$2,723,000	\$2,723,000	\$2,723,000
<b>TOTAL OPERATING EXP AND EQUIP</b>	<b>1</b>	<b>\$21,048,052</b>	<b>\$6,290</b>	<b>\$6,290</b>	<b>\$21,041,761</b>	<b>\$21,041,761</b>	<b>\$21,048,052</b>
<b>TOTALS</b>		<b>\$93,388,000</b>	<b>\$4,733,403</b>	<b>\$4,733,403</b>	<b>\$88,654,597</b>	<b>\$80,742,353</b>	<b>\$85,475,756</b>

<u>Category</u>	<u>Percentage</u>
Percentage of Personal Services Budget Expended	6.5%
Percentage of Operating Expenses & Equipment Budget Expended	0.0%
<b>Percentage of Total Budget Expended</b>	<b>5.1%</b>
Percentage of Fiscal Year Completed	8.3%

#

**Footnotes**

1 Statewide employee bargaining contracts are negotiated with the Administration on a periodic basis. Changes to these agreements impact the Authority's budget and updates to the budget are reflected subsequently at the appropriate reporting time. In some instances, forecast can exceed budget due to timing but will ultimately be trued up once DOF approves the additional funding.

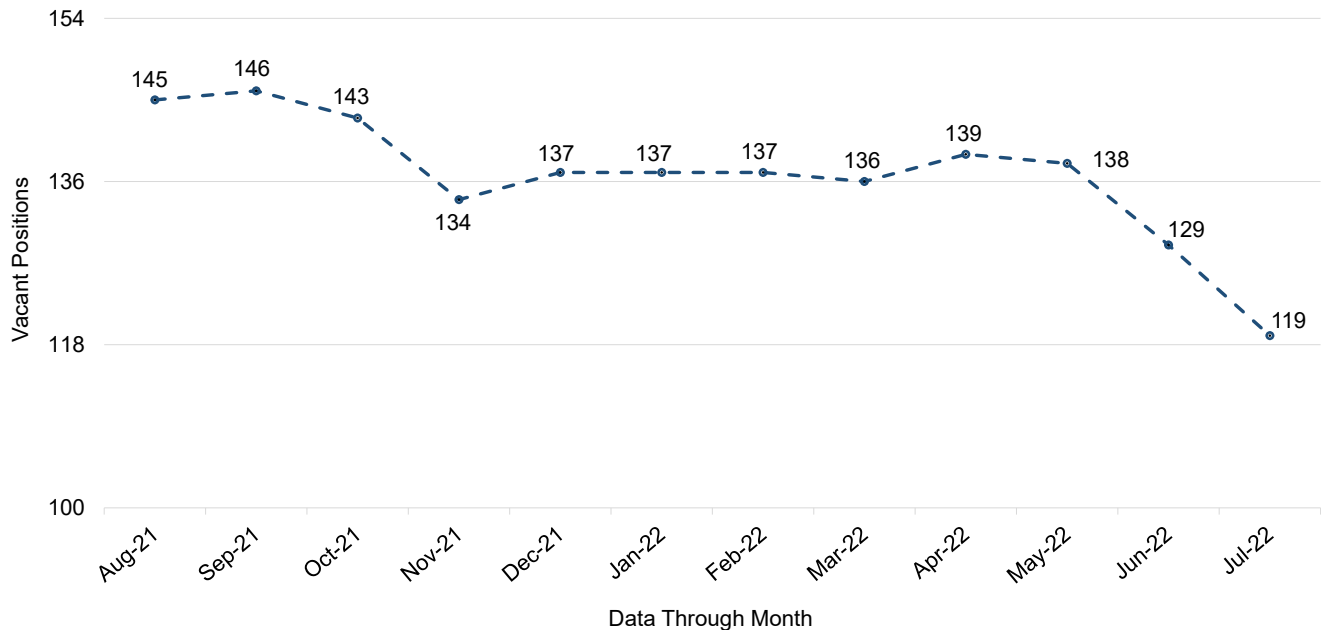
Data through July 31, 2022

Percentage of Fiscal Year Completed: 8.3%

**FY2022-23 Position Summary  
 All Offices**

All Offices	Notes	Total Authorized Positions	Total Filled Positions	Total Vacant Positions	Prior Month Vacant Positions	Total Vacancy Rate	Prior Month Vacancy Rate
Executive Office		5.0	4.0	1.0	1.0	20.0%	20.0%
Risk Management Office	9	6.0	3.0	3.0	3.0	50.0%	50.0%
Administration Office		53.0	49.0	4.0	4.0	7.5%	7.5%
Strategic Communications Office		11.0	10.0	1.0	1.0	9.1%	9.1%
Financial Office		59.0	46.0	13.0	13.0	22.0%	22.0%
Legal Office		13.0	10.0	3.0	5.0	23.1%	38.5%
Program Delivery Office		174.0	107.0	67.0	73.0	38.5%	42.0%
Northern California Region Office		8.0	6.0	2.0	2.0	25.0%	25.0%
Central Valley Region Office		8.0	7.0	1.0	1.0	12.5%	12.5%
Southern California Region Office		6.0	4.0	2.0	2.0	33.3%	33.3%
Audit Office		13.0	12.0	1.0	1.0	7.7%	7.7%
Legislative Affairs Office		4.0	3.0	1.0	1.0	25.0%	25.0%
Information Technology Office		69.0	49.0	20.0	22.0	29.0%	31.9%
<b>Total</b>	<b>1, 7, 9</b>	<b>429.0</b>	<b>310.0</b>	<b>119.0</b>	<b>129.0</b>	<b>27.7%</b>	<b>30.1%</b>

**Vacancies Trend**



#

**Footnotes**

- 1 Statewide employee bargaining contracts are negotiated with the Administration on a periodic basis. Changes to these agreements impact the Authority's budget and updates to the budget are reflected subsequently at the appropriate reporting time. In some instances, forecast can exceed budget due to timing but will ultimately be trued up once DOF approves the additional funding.
- 7 This report reflects State employees only.
- 9 In Jul-22, the Authority implemented an organizational change which involved the creation of the Risk Management Office. Risk Management was previously included in the Executive Office.

Data through July 31, 2022

FY2022-23 Vacancy Report  
 All Offices

Percentage of Fiscal Year Completed: 8.3%

Office	Notes	Total Vacant Positions
<b>Executive Office</b>		
Chief Operating Officer		1.0
<b>Executive Office Total</b>		<b>1.0</b>
<b>Risk Management Office</b>		
	9	
Deputy Chief Operating Officer *		1.0
Senior Transportation Engineer *		1.0
Supervising Transportation Engineer		1.0
<b>Risk Management Office Total</b>		<b>3.0</b>
<b>Administration Office</b>		
Staff Services Manager I *		1.0
Associate Governmental Program Analyst		3.0
<b>Administration Office Total</b>		<b>4.0</b>
<b>Strategic Communications Office</b>		
Information Officer I (Specialist)		1.0
<b>Strategic Communications Office Total</b>		<b>1.0</b>
<b>Financial Office</b>		
Deputy Director of Business Analytics and Strategic Planning		1.0
Staff Services Manager II (Supervisory) *		1.0
Staff Services Manager I *		1.0
Accounting Administrator II		1.0
Sr. Accounting Officer (Specialist) *		1.0
Associate Governmental Program Analyst *		2.0
Accounting Officer (Specialist) *		3.0
Associate Budget Analyst		1.0
Staff Services Analyst		2.0
<b>Financial Office Total</b>		<b>13.0</b>
<b>Legal Office</b>		
Attorney IV *		2.0
Attorney III		1.0
<b>Legal Office Total</b>		<b>3.0</b>
<b>Program Delivery Office</b>		
Chief of Rail Operations		1.0
Director of Contracts Administration (CEA)		1.0
C.E.A B		1.0
C.E.A*		2.0
Principal Transportation Engineer*		2.0
Supervising Land Surveyor*		2.0
Supervising Transportation Engineer*		6.0
Environmental Program Manager I (Managerial)*		1.0
Senior Transportation Engineer*		19.0
Transportation Engineer (Civil)		1.0
Senior Environmental Scientist (Supervisory)*		1.0
Principal Transportation Planner*		2.0
Supervising Right of Way Agent*		2.0
Associate Right of Way Agent*		2.0
Senior Right of Way Agent*		5.0
Senior Environmental Planner		1.0
Staff Services Manager I*		2.0
Structural Design Technician II*		1.0
Associate Governmental Program Analyst*		11.0
Staff Services Analyst*		2.0
Office Technician (Typing)*		2.0
<b>Program Delivery Office Total</b>		<b>67.0</b>
<b>Northern California Region Office</b>		
Staff Services Manager I		1.0
Information Officer I (Specialist) *		1.0
<b>Northern California Region Office Total</b>		<b>2.0</b>
<b>Central Valley Region Office</b>		
Associate Governmental Program Analyst *		1.0
<b>Central Valley Region Office Total</b>		<b>1.0</b>
<b>Southern California Region Office</b>		
Staff Services Manager II (Supervisory)		1.0
Staff Services Analyst		1.0
<b>Southern California Region Office Total</b>		<b>2.0</b>
<b>Audit Office</b>		
Staff Services Management Auditor		1.0
<b>Audit Office Total</b>		<b>1.0</b>
<b>Legislative Affairs Office</b>		
Staff Services Manager I		1.0
<b>Legislative Affairs Office Total</b>		<b>1.0</b>
<b>Information Technology Office</b>		
Information Technology Supervisor II		2.0
Information Technology Specialist II *		4.0
Information Technology Manager I		1.0
Information Technology Specialist I *		8.0
Information Technology Associate *		4.0
Graphic Designer II *		1.0
<b>Information Technology Office Total</b>		<b>20.0</b>
<b>Total Vacancies</b>	<b>7, 8</b>	<b>119.0</b>

#

Footnotes

- 7 This report reflects State employees only.
- 8 Positions marked with an asterisk include one or more of the 85 new positions allocated in FY2020-21 or the 73 new positions allocated in the FY2021-22 Budget Act through SB 170 (trailer bill).
- 9 In Jul-22, the Authority implemented an organizational change which involved the creation of the Risk Management Office. Risk Management was previously included in the Executive Office.