

California High-Speed Rail Authority

Palmdale to Burbank Project Section

Draft Environmental Impact Report/
Environmental Impact Statement

Appendix 3.19-A Cumulative Project List

August 2022



The environmental review, consultation, and other actions required by applicable federal environmental laws for this project are being or have been carried out by the State of California pursuant to 23 U.S.C. 327 and a Memorandum of Understanding dated July 23, 2019, and executed by the Federal Railroad Administration and the State of California.

This page intentionally left blank

APPENDIX 3.19-A: CUMULATIVE PROJECT LIST

This appendix identifies and maps recent, present, and foreseeable future land development and transportation projects and plans in each jurisdiction within the Palmdale to Burbank study area.

Table 3.19-A-1 through Table 3.19-A-7 identify regional projects, County of Los Angeles projects, and projects within the cities of Lancaster, Palmdale, Santa Clarita, Los Angeles, and Burbank. These tables include the following information:

- A map identification number corresponding to the mapped project location, when applicable
- The project name and/or identification number (for federal/state transportation improvement projects)
- A brief project description
- Project status or timing
- Potential significant unavoidable impacts, if available.
 - ‘To be determined’ (TBD) represents projects currently under environmental review
 - ‘Undetermined’ represents projects without adequate documentation to determine the level of environmental impact
 - Not applicable (N/A) represents projects that did not identify significant unavoidable impacts (typically projects that did not prepare environmental documents pursuant to the California Environmental Quality Act).
- Project location and approximate distance from the Palmdale to Burbank Project Section footprint

Tables

Table 3.19-A-1 Regional Projects	3.19 A-2
Table 3.19-A-2 County of Los Angeles	3.19 A-4
Table 3.19-A-3 City of Lancaster	3.19 A-6
Table 3.19-A-4 City of Palmdale	3.19 A-10
Table 3.19-A-5 City of Santa Clarita	3.19 A-17
Table 3.19-A-6 City of Los Angeles	3.19 A-21
Table 3.19-A-7 City of Burbank.....	3.19 A-25

Figures

Figure 3.19-A-1 Cumulative Projects Overview Map.....	28
Figure 3.19-A-2 Cumulative Projects Inset Map 1/6 – Lancaster Area	29
Figure 3.19-A-3 Cumulative Projects Inset Map 2/6 – Northern Palmdale Area	30
Figure 3.19-A-4 Cumulative Projects Inset Map 3/6 – Southern Palmdale Area.....	31
Figure 3.19-A-5 Cumulative Projects Inset Map 4/6 – Eastern Santa Clarita Area	32
Figure 3.19-A-6 Cumulative Projects Inset Map 5/6 – Western Santa Clarita Area	33
Figure 3.19-A-7 Cumulative Projects Inset Map 6/6 – Burbank Area	34

Table 3.19-A-1 Regional Projects

Map ID	Project Name	Description	Status/Timing	Potential Significant Unavoidable Impacts	Location (Approximate Distance from HSR Alignment)
United States Forest Service					
--	Angeles National Forest Land Management Plan ¹	Provides forest-wide strategic direction that is designed to achieve the desired conditions. The strategic direction in the forest plan addresses the Resource Planning Act (RPA) requirements through the incorporation of Government Performance and Results Act (GPRA) objectives at the national level. At the local level, the forest plan addresses issues relative to fire, plants, animals, and people.	Adopted 2005	N/A ²	Angeles National Forest (0.0mi)
--	San Gabriel Mountains National Monument Management Plan ³	Provides for the protection of the objects of interest identified in the Presidential Proclamation establishing the San Gabriel Mountains National Monument.	Draft completed 2016	N/A	San Gabriel Mountains National Monument (0.0mi)
California High-Speed Rail Authority					
--	Bakersfield to Palmdale Project Section	This segment of the California High-Speed Rail (HSR) System includes approximately 80 miles between HSR stations in Bakersfield and Palmdale, from the southern San Joaquin Valley and northern Antelope Valley. The project section extends from Kern County in the north to Los Angeles County in the south, with the Bakersfield and Palmdale stations making up this section's beginning and ending points.	DEIR/DEIS anticipated 2020	N/A	Adjacent to/overlapping the Palmdale to Burbank Project Section to the north.
--	Burbank to Los Angeles Project Section	This segment of the California High-Speed Rail (HSR) System includes would extend approximately 14 miles between HSR stations in Burbank and Los Angeles. This project section would travel primarily within an existing railroad corridor through the cities of Burbank, Glendale, and Los Angeles.	DEIR/DEIS anticipated 2020	N/A	Adjacent to/overlapping the Palmdale to Burbank Project Section to the south.

Map ID	Project Name	Description	Status/Timing	Potential Significant Unavoidable Impacts	Location (Approximate Distance from HSR Alignment)
Los Angeles County Metropolitan Transportation Authority					
R-1	Sepulveda Pass Transit Corridor ⁴	Implementation of Express Lanes on the I-405 between the US 101 and I-10 with an opening date of Fiscal Year (FY) 2026 (Phase 1); construction of a fixed-guideway transit service between the San Fernando Valley and the Westwood area of Los Angeles, with an opening year of FY 2033 (Phase 2); extension of the Phase 2 project southward to Los Angeles International Airport (LAX), with an opening year of FY 2057 (Phase 3).	Estimated completion: Phase 1, 2026; Phase 2, 2033; Phase 3, 2057	TBD	Along the Sepulveda Pass connecting the East San Fernando Valley Transit Corridor with the Westside Mobility Plan Study Area (9mi)
R-2	East San Fernando Valley Transit Corridor ⁵	Implementation of bus rapid transit (BRT) or light rail transit (LRT) in the center or curb lane along Van Nuys Boulevard from the Van Nuys Metro Orange Line station north to San Fernando Road where it would proceed northwest along San Fernando Road to the Sylmar/San Fernando Metrolink station.	DEIS/DEIR published August 2017	Traffic and Bicycle Facilities, Community and Neighborhood, Visual and Aesthetic, Air Quality, and Safety and Security ⁶	Van Nuys Boulevard between the Van Nuys Metro Orange Line station to San Fernando Road, to the Sylmar/San Fernando Metrolink station (0.8mi)
R-3	1-5: Magnolia Boulevard to Buena Vista Street (Project ID: LAOD192) ⁴	Expansion of Interstate 5 from Route 118 to Route 14 from 10 to 12 lanes with new HOV lanes.	Planned	TBD	Route 118 to Route 14 (2.1mi)
R-4	Link Union Station ⁷	The project will transform Los Angeles Union Station from a dead-end station to a "run-through" station by extending tracks south over the US-101 freeway, resulting in reduced passenger wait times. The project will also add a new loop track that will provide improved operational flexibility for rail service. Additionally, Link Union Station includes the development of a new passenger concourse with a wide array of retail amenities to further enhance the passenger experience at Los Angeles Union Station. These modifications will significantly enhance the station's efficiency and enable Los Angeles Union Station to continue to serve as a major hub for local, regional, and interstate transportation.	DEIR published January 2019	Air Quality, Noise, Traffic, and Cultural Resources.	Los Angeles Union Station (12mi)

Sources: 1 USFS 2017; 2 USFS 2005; 3 USFS 2016; 4 SCAG 2016; 5 SCAG 2017; 6 Los Angeles Metropolitan Transportation District 2017a; 7 Los Angeles Metropolitan Transportation District 2019

Table 3.19-A-2 County of Los Angeles

Map ID	Project Name/Number	Description	Status/Timing	Potential Significant Unavoidable Impacts	Location (Approximate Distance from HSR Alignment)
Land Use Plans					
--	Los Angeles County General Plan ¹	Provides the policy framework and establishes the long range vision for how and where the unincorporated areas will grow, and establishes goals, policies, and programs to foster healthy, livable, and sustainable communities. The General Plan includes many community-based area plans, including two that overlap the project area: the Antelope Valley Area Plan and Santa Clarita Valley Area Plan.	2015-2035	Agricultural Farmland and Forest Land; Air Quality and Global Climate Change; Biological Resources and Wetlands; Cultural Resources; Geology, Soils, Seismicity, and Paleontological Resources (mineral resources); Noise and Vibration; Public Utilities and Energy; Transportation ²	Los Angeles County
Planned and Potential Transportation Projects					
LAC-1	1/4 Traffic Signal, Avenue L and 42 nd Street West ³	Installation of a new traffic signal and communications to improve traffic flow and create safer traffic movements.	Completed	Undetermined	Intersection of West Avenue L and 42 nd Street West (1.7mi)
LAC-2	Highway Safety Improvement (Project ID: LA0G1197) ³	Installation of 1.8-mile bike lanes on 170 th Street East between Avenue M-4 and Avenue M-8 and between East Avenue P and East Palmdale Boulevard. The project is part of the Highway Safety Improvement Program.	2020/2021	Undetermined	170 th Street East between Avenue M-4 and Avenue M-8 and between East Avenue P and East Palmdale Boulevard (17.0 mi)
LAC-3	I-5 HOV/Truck Lanes Project: SR-14 to Parker Road (Project ID: LA0G440) ⁴	Widening existing I-5 to include high-occupancy vehicle (HOV) lanes, truck climbing lanes, and additional auxiliary lanes from SR-14 on the south to Parker Road on the north.	2021	Biological Resources and Wetlands ⁵	I-5 from SR-14 to Parker Road (6.0 mi)
LAC-4	Northwest SR-138 Corridor Improvement Project (Project ID: LA0G949) ³	Improvements to SR-138 between the I-5 interchange and the SR-14 interchange.	Completed	Agricultural Farmland and Forest Land ⁶	From Post Mile (PM) 0.0 to PM 36.8 on SR-138, PM 79.5 to 83.1 on I-5, and PM 73.4 to 74.4 on SR-14 in northern Los Angeles County (9.7 mi)

Map ID	Project Name/Number	Description	Status/Timing	Potential Significant Unavoidable Impacts	Location (Approximate Distance from HSR Alignment)
LAC-5	High Desert Corridor Project (Project ID: LA0G665) ⁴	Construction of a new multimodal link between SR-18 in San Bernardino County and SR-14 in Los Angeles County, connecting some of the fast-growing residential, commercial, and industrial areas in Southern California, including Palmdale, Lancaster, Adelanto, Victorville, Hesperia, and Apple Valley. The project would be implemented in three segments: the Antelope Valley segment, the High Desert segment, and the Victor Valley segment.	Final EIR/EIS Completed June 2016	Aesthetics and Visual Quality; Agricultural Farmland and Forest Land; Biological Resources; Cultural Resources; Geology, Soils, Seismicity, and Paleontological Resources (paleontological resources); Noise and Vibration; Station Planning, Land Use, and Development; Transportation ⁷	Between SR-14 In Los Angeles County and SR-18 in San Bernardino County (0.0 mi)
LAC-6	The Old Road Project – Lake Hughes Road to Hillcrest Parkway (Project ID: LA0D461) ¹⁰	Widening of the existing two-lane road to four lanes along either the current alignment or along a modified alignment. The proposed scope of work involves reconstruction and widening of the existing roadway to 72 feet wide, including curb, gutter, sidewalk, curb ramps, and driveway aprons, drainage facilities, signing and striping, street lighting, traffic signals, bikeway, and intersection improvements at Lake Hughes Road, Parker Road, and Hillcrest Parkway.	2021	Undetermined ^{8,9}	Between Hillcrest Parkway to Lake Hughes Road (13.6 mi)
--	MTA Transportation Improvement Plan Administration Planning, (Project ID: LA29202N) ⁸	Programming and monitoring for Statewide Transportation Improvement Program projects throughout LA County (200 CFP 7116 State Only 3594, 2001 CFP 8401, PPNO 3535, 9001A, 9001).	2016-2019	Undetermined	City of Los Angeles

1 County of Los Angeles 2017; 2 County of Los Angeles 2014a; 3 SCAG 2016a; 4 SCAG 2016b; 5 Caltrans 2008; 6 Caltrans 2017b; 7 Caltrans 2016b; 8 CEQAnet 2017; 9 Azhand 2017, 10 SCAG 2018

Table 3.19-A-3 City of Lancaster

Map ID	Project Name/Number	Description	Status/Timing	Potential Significant Unavoidable Impacts	Location (Approximate Distance from HSR Alignment)
Land Use Plans					
--	General Plan 2030 City of Lancaster	Identifies the types of development that will be allowed, and the general pattern of future development. The Plan contains goals, objectives, policies and specific actions that provide the framework for achieving the community's long-term vision. ¹ Also includes Circulation Element depicting future roadway network.	Adopted 2009	Undetermined ²	City of Lancaster
--	Downtown Lancaster Specific Plan	Provides area-specific land use regulations and development guidelines for seven districts within the 140-acre Downtown. Development of the DLSP would allow for a mix of land uses including retail, office, residential and civic uses within the seven districts. ³	Adopted 2008	Air Quality and Global Climate Change ⁴	City of Lancaster
--	Fox Field Industrial Corridor Specific Plan	Provides planning and development regulations as well as goals and objectives that guide the development of the planning area, which surrounds the Fox Field Airport. The planning concept is to create a landscaped, high quality campus environment that would accommodate a variety of clean businesses, including manufacturing, light industrial, professional, administrative, high technology, and research uses. A large portion of the site is proposed to be covered by surface parking, although site intensification of underutilized parking lots is encouraged through specific plan amendments in the future. ⁵	Adopted 1996	Undetermined	Northwest of Lancaster, West of SR-14
--	Lancaster Business Park Phase III Specific Plan	Provides the City of Lancaster with a comprehensive set of plans, regulations, conditions and programs for guiding the orderly development of the Lancaster Business Park Phase III. Development will include a variety of manufacturing, research and development, professional, and limited commercial uses. These uses will be integrated within a unified framework of planned vehicular circulation, landscaping, pedestrian walkways and common open space. ⁶	Adopted 1991	Undetermined	North of Palmdale and east of SR-14, north of Air Force Plant 42

Map ID	Project Name/Number	Description	Status/Timing	Potential Significant Unavoidable Impacts	Location (Approximate Distance from HSR Alignment)
L-1	Amargosa Creek Specific Plan	Guides the long-term development of the project site, and permits the development of retail and office uses, a hotel, and a medical facility within two major districts: the Commercial District and the Medical District. ⁷	Partially graded	Air Quality and Global Climate Change; Noise and Vibration; Transportation ⁸	Northeast corner of 10th Street West and West Avenue L (0.53mi)
Planned and Potential Projects					
L-2	SPR 05-01 ⁹	3.26 gross acre commercial center	Partially constructed	Undetermined	Northwest corner of 10 th St. and Columbia Way (0.52mi)
L-3	SPR 14-03 ⁹	28,878 SF DMV facility	Grading underway	Undetermined	Northeast corner of 8 th St West and Avenue L-6 (0.41mi)
L-4	SPR 15-03 ⁹	Automotive recycling yard including 5,58- SF pf vendor shops, 9,600 SF of warehouse space, and a 12,000 SF car crusher	Grading underway	Undetermined	Northwest corner of Division St. and Avenue H (0.01mi)
L-5	SPR 15-04 ⁹	9,960 SF storage building	Approved	Undetermined	204 East Avenue L-8 (0.07mi)
L-6	SPR 15-05 ⁹	1,124 SF contractor's office with 796 storage building	Approved	Undetermined	42461 6 th St. East (0.40mi)
L-7	DR 15-89 ⁹	20,081 SF office addition	Approved	Undetermined	West of 10 th St. between L-10 and L-12 (0.64mi)
L-8	Tract No. 47895 ¹⁰	10-acre single family residence subdivision	24 of 39 homes built	Undetermined	Northwest corner of Avenue K-12 and Challenger Way (0.30mi)
L-9	Tract No. 54199 ¹⁰	14.7-acre single family residence subdivision	20 of 55 homes built	Undetermined	Northeast corner of Avenue H-8 and 5 th St. East (0.55mi)
L-10	Tract No. 54406 ¹⁰	4.9-acre single family residence subdivision	12 of 21 homes built	Undetermined	West of 5 th St. East and north of Avenue K (0.30mi)
L-11	Tract No. 62873 ¹⁰	2.5-acre single family residence subdivision	Approved	Undetermined	Northeast corner of 7 th St. and Avenue K (0.64mi)
L-12	Tract No. 64392 ¹⁰	23.5-acre single family residence subdivision	Approved	Undetermined	Southeast corner of Challenger Way and Avenue H-12 (1.1mi)
L-13	Tract No. 68547 ¹⁰	1.61-acre single family residence subdivision	Approved	Undetermined	South of Avenue J and east of 8 th St. East (0.92mi)
L-14	Tract No. 70861 ¹⁰	6.23-acre single family and multifamily residence subdivision	Approved	Undetermined	South of Avenue I from Beech Ave. to Elm Ave. (0.0mi)

Map ID	Project Name/Number	Description	Status/Timing	Potential Significant Unavoidable Impacts	Location (Approximate Distance from HSR Alignment)
L-15	Whit Carter Park Expansion ⁹	Expansion of park from 27 acres to 62 acres	Planned	Undetermined	Sierra Highway and Beech Ave. (0.05mi)
L-16	CUP 07-06 ⁹	19,028 square foot commercial retail center with gas station and convenience store	Partially constructed	Undetermined	Southwest corner of 10 th St. West and Avenue H (0.02mi)
L-17	15BW008 ¹¹	Construction of bicycle and pedestrian improvements, and removal of vehicular traffic lanes. Improvements would create a complete street on 10th Street West and connect to the Downtown	Planned	Undetermined	10 th Street West between West Avenue H and West Lancaster Blvd (0.00mi)
L-18	15BR004 ¹¹	Improve northbound off-ramp to improve additional stacking, improvements to avenue K and 15 th Street West	Planned	Undetermined	Avenue K and SR 14 (0.42mi)
L-19	15BR005 ¹¹	Widen overpass to multiple lanes in each direction and other improvements	Planned	Undetermined	Avenue M and SR 14 (0.59mi)
L-20	15BR006 ¹¹	Widen overpass to multiple lanes in each direction, local street widening, and other improvements	Planned	Undetermined	Avenue G and SR 14 (1.5mi)
L-21	15BR007 ¹¹	New ramps at Avenue J, possible closure of ramps at J-8 and 20 th W, possible C-D road	Planned	Undetermined	Avenue J and SR 14 (1.9mi)
L-22	15BR008 ¹¹	Interchange improvements	Planned	Undetermined	Avenue L and SR 14 (1.2mi)
L-23	15ST026 ¹¹	Gap closure	Planned	Undetermined	Avenue M and 10 th Street West (1.1mi)
L-24	15ST050 ¹¹	Road widening and intersection improvements	Planned	Undetermined	Avenue J and 17 th Street East (1.5mi)
L-25	15ST053 ¹¹	Road widening and street improvements	Planned	Undetermined	Avenue I and Challenger Way (1.4mi)
L-26	15ST057 ¹¹	Road widening	Planned	Undetermined	Trevor Avenue from Avenue H south 1000 feet (0.26)
L-27	15ST058 ¹¹	Construction of new streets	Planned	Undetermined	Medical Main Street – Antelope Valley Hospital (1.3mi)
L-28	15ST060 ¹¹	Install additional travel lane, bike lane, and bus turnout.	Planned	Undetermined	Avenue J and 20 th Street West (2.3mi)

Map ID	Project Name/Number	Description	Status/Timing	Potential Significant Unavoidable Impacts	Location (Approximate Distance from HSR Alignment)
L-29	12ST032 ¹²	Street rehabilitation; addition of sidewalks and landscaping (from West Lancaster Boulevard to 600 feet north of West Avenue J)	Planned	Undetermined	20 th Street West between West Lancaster Boulevard and West Avenue J (1.7mi)
L-30	15ST055 ¹²	5 th Street East Corridor improvements	Planned	Undetermined	5 th Street East from 550 feet south of East Kettering Street to Curve Circle (0.70mi)

Sources:

1 City of Lancaster 2009b; 2 City of Lancaster 2009a; 3 City of Lancaster 2008b; 4 City of Lancaster 2008a; 5 City of Lancaster 1996; 6 City of Lancaster 1991; 7 City of Lancaster 2007b; 8 City of Lancaster 2007a
 9 Ng 2016; 10 City of Lancaster 2016b; 11 City of Lancaster 2016a; 12 Bolanos 2017

Table 3.19-A-4 City of Palmdale

Map ID	Project Name/Number	Description	Status/Timing	Potential Significant Unavoidable Impacts	Location (Approximate Distance from HSR Alignment)
Land Use Plans					
--	City of Palmdale General Plan ¹	Guides land use based on goals and policies related to land use, transportation routes, population growth and distribution, development, and other related physical, social, and economic development factors. The General Plan established a clear set of development rules for citizens, developers, decision makers, neighboring cities and counties, and provides the community with an opportunity to participate in the planning and decision making process.	Adopted 1993 Planning horizon long term	Air Quality and Global Climate Change, Biological Resources and Wetlands, Hydrology and Water Resources, Parks, Recreation, and Open Space (loss of open space), Geology, Soils, Seismicity, and Paleontological Resources (earthquake hazards), Regional Growth (population and housing), Transportation ²	City of Palmdale
--	City of Palmdale General Plan Housing Element Update ³	Establishes new high density residential areas and increases the permitted density within Neighborhood Zone C of the Palmdale Transit Village Specific Plan from 25-40 dwelling units per acre to 30-40 dwelling units per acre.	Adopted 2012	Air Quality and Global Climate Change, Hydrology and Water Resources, Noise and Vibration, Public Utilities and Energy, Transportation ⁴	City of Palmdale
--	Palmdale Transit-Oriented Development (TOD) Overlay Zone Land Use Framework Plan ³	Framework to guide future development in the area surrounding the Palmdale Transportation Center and future Palmdale Multimodal Station; envisions a vibrant urban core and walkable mixed-use neighborhoods.	DEIR published January 2018	Air Quality, Greenhouse Gas Emissions, and Noise ²⁷	Centered around the Palmdale Transportation Center and proposed HSR station; generally located between Rancho Vista Boulevard (Avenue P) and Palmdale Boulevard (SR-138) and between SR-14 and 10th Street East ⁶

Map ID	Project Name/Number	Description	Status/Timing	Potential Significant Unavoidable Impacts	Location (Approximate Distance from HSR Alignment)
--	Palmdale Transit Village Specific Plan ⁷	Proposes a range of 110—acre Transit Oriented Development adjacent to Downtown Palmdale.	Approved 2007	Air Quality and Global Climate Change; Cultural Resources; Socioeconomics and Communities; Station Planning, Land Use, and Development; Public Utilities and Energy; Transportation ⁸	Bounded by Technology Boulevard to the north, Avenue Q-3 to the south, Sierra Highway to the east, and 3rd Street East to the west
--	Recycled Water Facilities Plan ⁹	Proposes implementation of the 2014 Recycled Water Facilities Plan, which includes construction and operation of distribution pipelines and laterals and pumping facilities.	MND filed 2014	Undetermined	City of Palmdale
--	Palmdale Multi-Modal High Speed Rail Station Area Plan Project ¹⁰	Station area plan for the planned HSR multimodal station near downtown Palmdale.	Planned	TBD	Between Rancho Vista Boulevard and Avenue R and between SR-14 and 15th Street East
Planned and Potential Projects					
--	Water System Master Plan ¹¹	Construction of water system improvements throughout the Palmdale Water District service area in order to meet potable water system current and future needs.	Plan completed in 2016, EIR in progress (NOP filed February 2017)	TBD	City of Palmdale
--	Palmdale Regional Groundwater Recharge and Recovery Project ³	Development of a groundwater banking, storage, and extraction program, using a combination of raw imported State Water Project (SWP) water and locally produced recycled water delivered to a new recharge basin located on undeveloped land in northeast Palmdale.	Scheduled to begin operation 2021 ²⁸	N/A ¹²	Northeastern, undeveloped portion of the City of Palmdale and surrounding unincorporated Los Angeles County and City of Lancaster. North of SR-138, east of SR-14, south of Edwards Air Force Base, and west of the community of Lake Los Angeles

Map ID	Project Name/Number	Description	Status/Timing	Potential Significant Unavoidable Impacts	Location (Approximate Distance from HSR Alignment)
P-1	Grading Project (Site Plan Review 16-003) ³	Placement of approximately 3,000,000 cubic yards of clean soil consistent with the approved Grading Permit conditions on the property currently owned by "Three Arklin LLC" over 15 years.	NOD filed December 2016 ¹³	None	Directly south of City Ranch Road and approximately 1 mile west of Tierra Subida Avenue (2.3mi)
P-2	Antelope Valley Landfill Expansion ³	Enlargement of the landfill area by joining the two existing landfills into one contiguous landfill.	Final EIR published 2011	Cumulative Impacts (Aesthetics and Visual Quality; Air Quality and Global Climate Change; Transportation) ^{14,15}	Directly west of SR-14 and north of the Anaverde Creek (Anaverde Valley), at the existing terminus of City Ranch Road, west of Tierra Subida Avenue (2mi)
P-3	Guidance Charter School (CUP 16-011) ³	New charter school that will serve middle school and high school students and will include a library, gym, multi-purpose room, administration building, locker rooms, basketball/volleyball courts, classrooms, installation of paved parking areas, track, soccer and football facility, baseball field, and access roads and utilities (natural gas, water sewer, electric, telephones).	MND Adopted September 2016 ¹⁶	None	30 acres; south of Avenue R and west of 40th Street East (9.7mi)
P-4	SPR15-004 ¹⁷	Proposed assisted living facility within a 57,935square foot building.	Proposed MND Circulated March 2016	TBD	12th Place East and East Avenue Q-2 (1.1mi)
P-5	SPR 15-008 ¹⁸	Solar Facility on the Lockheed Martin Campus	Approved	Undetermined	1011 Lockheed Way (0.4mi)
P-6	CUP14-030 ¹⁸	Development of an approximately 400 square foot wireless telecommunications facility.	Approved	Undetermined	39110 3 rd Street East (1.0mi)

Map ID	Project Name/Number	Description	Status/Timing	Potential Significant Unavoidable Impacts	Location (Approximate Distance from HSR Alignment)
Planned and Potential Transportation Projects					
P-7	SR-138/Avenue N Interchange Project (Project ID: LA0G898) ¹⁹	Ramp, signal, intersection, and freeway mainline improvements at SR-14/Avenue N on- and off-ramp locations, SR-14/Avenue N bridge structure, Avenue N between SR-14 and 10th Street West, and SR-14 near Avenue N on- and off-ramp approaches.	2016-2019	Undetermined	SR-14 and Avenue N interchange (2.1mi)
P-8	Rancho Vista Boulevard Grade Separation Project (Project ID: STR-075) ²²	Construction of a six-lane underpass of Rancho Vista Boulevard at its intersection with the Metrolink railroad tracks. This project will also provide include access ramps to from Rancho Vista Boulevard to Sierra Highway.	Completion between 2018-2018 ²⁹	Undetermined ²²	Rancho Vista Boulevard from Fairway Drive to 10th Street East and Sierra Highway from north of East Avenue O-8 to Avenue P-8 (0.0mi)
P-9	SR-14 Carpool Lanes ²²	Addition of carpool lanes to SR-14 from Avenue P-8 to Avenue L.	Completion in 2027	Undetermined	Avenue P-8 to Avenue L (2.8mi)
P-10	Rancho Vista Boulevard Widening Gap Closure Project (Project ID: LAF7121) ³⁰	Widening of two segments of Rancho Vista Boulevard, between 23rd Street West and 15th Street West and between Arnie Quinones Park and West Avenue N, to accommodate three continuous lanes without gaps or bottlenecks, 10-foot sidewalks, and 5-foot Class III bike routes in each direction.	Anticipated completion 2019	Undetermined ²¹	Rancho Vista Boulevard between 23rd Street West and 15th Street West (1.3 mi) and between Arnie Quinones Park and West Avenue N (4.4 mi)
P-11	SR-138 (SR-14) Northbound Off-Ramp onto Rancho Vista Boulevard/ Avenue P Improvement Project (Project ID: LA0G897) ²²	Improvements to the traffic signal and roadway at the SR-138 (SR-14) northbound off-ramp at Rancho Vista Boulevard Avenue P. Improvements to southbound Rancho Vista Boulevard/Avenue P on-ramp SR-138 (SR-14). Improvements to SR-138 at Technology Drive bridge structure. Widening of southbound SR-138 (SR-14) beginning south on Rancho Vista Boulevard/Avenue P and exiting to Palmdale Boulevard. Additional mainline lane improvements between Rancho Vista Boulevard/Avenue P and Palmdale Boulevard.	MND Circulated December 2018. ²³	None	Rancho Vista Boulevard and Avenue P to Palmdale Boulevard (0.5mi)

Map ID	Project Name/Number	Description	Status/Timing	Potential Significant Unavoidable Impacts	Location (Approximate Distance from HSR Alignment)
P-12	SR-138 (SR-14), 10th Street West Widening/ Interchange Project (Project ID: LA0G895) ²²	Widening of both sides of 10th Street West between Rancho Vista Boulevard/Avenue P and West Avenue O-8; improvements to 10th Street West (on- and off-ramps), and upgrades and/or modifications to three traffic signals at the following locations: 10th Street West at Rancho Vista Boulevard/Avenue P, the Antelope Valley Mall, and SR-138 (SR-14) southbound off-ramp.	MND Circulated February 2018 ²⁴	None	10th Street West between Rancho Vista Boulevard and West Avenue O-8 (0.6mi)
P-13	Palmdale Boulevard (SR-138 /47th Street) Street Improvements (Project ID: LA0G951) ²⁰	Installation of a traffic signal at 15th Street East and new curb/gutter/sidewalk between 11th Street East and 22nd Street East and on 47th Street from Avenue R-8 and Avenue S.	N/A	Undetermined	Palmdale Boulevard from 11th Street East to 22nd Street East (0.1mi); 47th Street from Avenue R-8 to Avenue S (3.3mi)
P-14	Palmdale Boulevard Off-Ramp Widening Project (Project ID: LA0G896) ³⁰	Addition of two left- and one right-turn lanes onto Palmdale Boulevard; widening of northbound SR-14 for auxiliary lane; modifications to northbound loop on-ramp for right turn pocket; modifications to two ramp intersections to stop left-turn movement to merge freely onto Palmdale Boulevard; addition of eastbound right-turn lane from Palmdale Boulevard to Division Street; modifications to Palmdale Boulevard for double left turns from ramps; modifications to Palmdale Boulevard for three westbound through lanes through southbound ramp intersection; modifications to southbound off ramp allowing widening from Avenue Q - Palmdale Boulevard.	2021	Undetermined	Palmdale Boulevard through southbound SR-14 ramp intersection (0.3mi)
P-15	SR-138 (5th Street East to 10th Street East) Improvements Project ²⁵	Widening of SR-138 (Palmdale Boulevard) between 5th Street East and 10th Street East in downtown Palmdale from two lanes to three lanes in each direction; widening of Sierra Highway from two lanes to three lanes in each direction between Avenue R and a point 500 feet south of Avenue Q.	Construction to begin in early 2019, completion in 2020	Undetermined	SR-138/Palmdale Boulevard between 5th Street East and 10th Street East (0.0 mi); Sierra Highway between Avenue R and 500 feet south of Avenue Q (0.0mi)

Map ID	Project Name/Number	Description	Status/Timing	Potential Significant Unavoidable Impacts	Location (Approximate Distance from HSR Alignment)
P-16	Avenue R Safety Improvement Project ²²	Improvements to Avenue R including a continuous 6-foot-wide dedicated bike lane with buffer lane; closing sidewalk gaps; providing pedestrian crossings; creating a two-way left-turn lane in the midblock; and adding traffic-calming devices and ADA-compliant ramps in the vicinity of Tumbleweed Elementary School. Improvements would also include restriping lanes and existing crossings while matching the proposed road configuration to the existing roadway configuration at both the eastern and western ends and at local intersections.	Planned	Undetermined ²⁵	Avenue R from west of Sierra Highway to 0.1 mile east of 25th Street East (0.0mi)
P-17	Tierra Subida Widening from Avenue S to Rayburn Road (Project ID: LA0D145B) ³⁰	Widening of Tierra Subida from two to four lanes and addition of traffic signals, streetlights, raised medians, drainage improvements and pedestrian improvements.	Anticipated completion 2019	Undetermined ³	Tierra Subida from Avenue S to Rayburn Road (0.6mi)
P-18	SR-138 Widening Project from Avenue T to SR-18 (Project ID: LA0D451) ³⁰	Widening of SR-138 from two to four through lanes with a median turn lane from Avenue T to SR-18.	2023	Cumulative Impacts (Cultural Resources, Noise and Vibration) ²⁶	SR-138 from Avenue T to SR-18 (4mi)
P-19	Avenue M/ STR-023 ²²	Street widening south side only, part of Measure R handled by the City of Lancaster	Planned	Undetermined	Avenue M from SR-14 to Sierra Highway (0.5mi)
P-20	Avenue N Widening/STR-028 ²²	Street widening and improvements	Planned	Undetermined	Avenue N from 10 th West to Sierra Highway (0.0mi)
P-21	SR 14 Ave N Overcrossing/STR-105 ²²	Widen SR-14 bridge from 2 to 4 lanes, widening of SR-14 off-ramps	Planned	Undetermined	Interchange at Avenue N and SR-14 (1.4mi)
P-22	Rancho Vista Blvd Widening/STR-080 ²²	1.2 miles widening to six lanes, bike lanes	Planned	Undetermined	Rancho Vista Blvd from Fairway Drive to 15 th Street (0.0mi)
P-23	5 th Street East/STR-007 ²²	Street widening improvements	Planned; Funding 2020-2026	Undetermined	5 th Street East from Palmdale Boulevard to Avenue S (0.0mi)
P-24	10 th Street East/STR-008 ²²	Street widening improvements	Planned; Funding 2019-2026	Undetermined	10 th Street East from Rancho Vista Blvd to Avenue Q (0.0mi)

Map ID	Project Name/Number	Description	Status/Timing	Potential Significant Unavoidable Impacts	Location (Approximate Distance from HSR Alignment)
P-25	10 th Street East/STR-009 ²²	Street widening improvements	Planned; Funding 2019-2026	Undetermined	10 th Street East from Avenue R to Avenue S (0.0mi)
P-26	10 th Street West/STR-010 ²²	Street widening improvements	Planned; Funding 2019-2026	Undetermined	10 th Street East from Avenue M to Avenue O-8 (1.0mi)
P-27	Division Street Improvements/STR-066-67 ²²	Street widening improvements	Planned; Funding 2018-2026	Undetermined	Division Street from Palmdale Boulevard to Avenue R (0.0mi)
P-28	Palmdale Boulevard/STR-070 ²²	Street widening and improvements	Planned; Funding 2019-2026	Undetermined	Palmdale Boulevard from 10 th Street West to SR-14 (0.4mi)
P-29	Rayburn Road/STR-082 ²²	Street widening and improvements	Planned; Funding 2018-2019	Undetermined	Rayburn Road from Tierra Subida Avenue to Division Street (0.0mi)
P-30	Sierra Highway Widening/STR-083 ²²	Widening to 6 lanes	Planned; Funding 2019-2026	Undetermined	Sierra Highway from Avenue R-8 to Avenue S (0.0mi)
P-31	Technology Drive Widening/STR-087 ²²	Street widening and improvements	Planned; Funding 2019-2026	Undetermined	Technology Drive from SR-14 to 3 rd Street East (0.1mi)
P-32	State Route 138/STR-101 ²²	Widen to three lanes in each direction and improvements	Planned; Funding 2016-2018	Undetermined	SR-138 from 5 th East to 10 th East (0.0mi)

Sources: 1 City of Palmdale 1993a; 2 City of Palmdale 1993b; 3 CEQAnet 2017; 4 City of Palmdale 2012; 6 Dyett & Bhatia 2015; 7 City of Palmdale 2007a; 8 City of Palmdale 2007b; 9 City of Palmdale 2014; 10 City of Palmdale 2017b; 11 City of Palmdale 2016e; 12 City of Palmdale 2016b; 13 City of Palmdale 2016c; 14 City of Palmdale 2010; 15 City of Palmdale 2011; 16 City of Palmdale 2016d; 17 City of Palmdale 2016a; 18 Behen 2016; 19 SCAG 2016a; 20 SCAG 2016b; 21 Builders Notebook 2017; 22 City of Palmdale 2016f; 23 Caltrans 2018; 24 City of Palmdale 2018b; 25 Caltrans 2016a; 26 Caltrans 2000; 27 City of Palmdale 2017e; 28 Kennedy/Jenks 2019; 29 City of Palmdale 2018; 30 SCAG 2018

Table 3.19-A-5 City of Santa Clarita

Map ID	Project Name/Number	Description	Status/Timing	Potential Significant Unavoidable Impacts	Location (Approximate Distance from HSR Alignment)
Adopted Plans					
--	City of Santa Clarita One Valley One Vision General Plan ¹	Establishes a long-range vision and comprehensive policy framework for how the city could grow and develop, provide public services, and maintain the qualities that define Santa Clarita.	2010-2030	Agricultural Lands; Air Quality and Global Climate Change; Biological Resources and Wetlands; Noise and Vibration; Public Utilities and Energy ²	City of Santa Clarita
Planned and Potential Projects					
S-1	Sand Canyon Plaza Mixed-Use Project ³	Redevelopment of an approximately 87-acre project site with a mixed-use community with commercial, apartment, townhome, and single family neighborhood areas.	Draft EIR completed March 2017	Air Quality and Global Climate Change; Noise and Vibration; Cumulative (Air Quality and Global Climate Change; Noise and Vibration) ³	Immediately north of Soledad Canyon Road, east of Sand Canyon Road, north of SR-14, and west of Pinetree residential community (2.0mi)
S-2	Mancara at Robinson Ranch Project ⁴	187.3-acre residential development of 109 single family homes.	Draft EIR completed December 2011; project pending	Noise and Vibration ⁴	East of the intersection of Oak Spring Canyon Road and Lost Canyon Road (0.7mi)
S-3	Vista Canyon Specific Plan ⁵	Contains plans, regulations, guidelines, and implementation program necessary to develop 185 acres of residential, mixed-use, and non-residential transit-oriented development in Vista Canyon, a proposed new annexation area for the City of Santa Clarita. Includes construction of Vista Canyon Road Bridge over the Santa Clara River and roadway from Vista Canyon Community (Jakes Way/Lost Canyon) to Soledad Canyon Road. Includes 750-foot-long bridge, one lane in each direction, Class I bike lane. (bike lane less than 1 mile). ⁶	Project approved May 2011; construction underway	Air Quality and Global Climate Change; Noise and Vibration; Public Services and Utilities (solid waste disposal) ⁷	Immediately south of SR-14, west of La Veda Avenue, north of the Metrolink rail line, and east of the Colony Townhome community (2.4mi)

Map ID	Project Name/Number	Description	Status/Timing	Potential Significant Unavoidable Impacts	Location (Approximate Distance from HSR Alignment)
Planned and Potential Transportation Projects					
S-4	Via Princessa Extension (1 of 3) (Project ID: LA9910013) ⁸	Extension of Via Princessa from Golden Valley Road to approximately 350 meters west of Rainbow Glen Drive, east of Isabella Parkway.	Estimated completion 2019	Air Quality and Global Climate Change (construction emissions); Biological Resources (loss of vernal pools); Noise and Vibration (during construction); Aesthetics and Visual Quality (visual character and light and glare) ⁹	Golden Valley Road to approximately 350 meters west of Rainbow Glen Drive (5.2mi)
S-5	Via Princessa Extension (2 of 3) (Project ID: LA9910014) ⁸	Extension of Via Princessa from Oakridge Drive to Magic Mountain Parkway (from zero to six lanes).	2022-2024	Undetermined ¹⁰	Oakridge Drive to Magic Mountain Parkway (7.2mi)
S-6	Via Princessa East Extension Project (3 of 3) (Project ID: LA0D476) ⁸	Addition of three lanes in each direction between Magic Mountain Parkway and Golden Valley Road including outside curb and gutter, and drainage improvement.	2018-2020	Undetermined ¹⁰	Between Magic Mountain Parkway and Golden Valley Road (7.2mi)
S-7	Lyons Avenue Improvements (Project ID: LA0G740) ⁸	Widening and restriping of Lyons Avenue from Wiley Canyon Road to Railroad Avenue to accommodate a change from four to six lanes.	2019-2021	Undetermined ¹⁰	Wiley Canyon to Railroad Avenue (7.2mi)
S-8	Orchard Village Road Restriping Project (Project ID: LA0G742) ⁸	Restriping of Orchard Village Road from McBean Parkway to Lyons Avenue from four to six lanes.	2019-2020	Undetermined ¹⁰	McBean Parkway to Lyons Avenue (7.9mi)
S-9	Railroad Avenue Improvements (Project ID: LA0G744) ⁸	Widening and restriping of Railroad Avenue from Newhall Avenue to Bouquet Canyon Road to accommodate a change from four to six lanes.	2021-2022	Undetermined ¹⁰	Newhall Avenue to Bouquet Canyon Road (6.9mi)

Map ID	Project Name/Number	Description	Status/Timing	Potential Significant Unavoidable Impacts	Location (Approximate Distance from HSR Alignment)
S-10	Bouquet Canyon Road Improvements (Project ID: LA0G745) ⁸	Widening and restriping of Bouquet Canyon Road from Seco Canyon Road to Plum Canyon Road to accommodate a change from four to six lanes.	2020-2022	Undetermined ¹⁰	Seco Canyon Road to Plum Canyon Road (6.7mi)
S-11	Plum Canyon Road Improvements (Project ID: LA0G746) ⁸	Widening and restriping of Plum Canyon Road from Bouquet Canyon Road to city limit to accommodate a change from four to six lanes.	2019-2021	Undetermined ¹⁰	Bouquet Canyon Road to City limit (6.2mi)
S-12	Whites Canyon Road Improvements (Project ID: LA0G747) ⁸	Widening and restriping of Whites Canyon Road from Soledad Canyon Road to City Limit to accommodate a change from four to six lanes.	2019-2021	Undetermined ¹⁰	Soledad Canyon Road to City limit (4.4mi)
S-13	Golden Valley Road Improvements (Project ID: LA0G748) ⁸	Widening and restriping of Golden Valley Road from Soledad Canyon Road to Sierra Highway from four to six lanes and installation of a traffic signal.	2018-2020	Undetermined ¹⁰	Soledad Canyon Road to Sierra Highway (4.8mi)
S-14	Sierra Highway Improvements (Project ID: LA0G751) ⁸	Widening and restriping of Sierra Highway from Via Princessa to City limit to accommodate a change from four to six lanes.	2019-2021	Undetermined ¹⁰	Via Princessa to City limit (3.9mi)
S-15	Newhall Ranch Road Bridge Widening (Project ID: LA0G755) ⁸	Newhall Ranch Road Bridge widening over the San Francisquito Creek six to eight lanes (Bridge No. 53C2164).	Estimated completion 2019	Undetermined ^{10, 11}	Newhall Ranch Road from McBean Parkway to Avenue Tibbitts (9.8mi)
S-16	Magic Mountain Parkway Extension (3 of 3) (Project ID: LA960170) ⁸	Construction of a new road and bridge with three lanes in each direction, extending Magic Mountain Parkway from the intersection of Bouquet Canyon/Railroad Avenue to Via Princessa.	2020-2022	Undetermined ¹⁰	Bouquet Canyon/Railroad Avenue to Via Princessa (6.6mi)

Map ID	Project Name/Number	Description	Status/Timing	Potential Significant Unavoidable Impacts	Location (Approximate Distance from HSR Alignment)
S-17	Santa Clarita Parkway Extension (1 of 3) (Project ID: LA9708004) ⁸	Extension of Santa Clarita Parkway from Bouquet Canyon Road/Soledad Canyon Road (from zero to four lanes).	2020-2022	Undetermined ¹⁰	Bouquet Canyon Road/ Soledad Canyon Road (7.2mi)
S-18	Santa Clarita Parkway Extension (2 of 3) (Project ID: LA9910016) ⁸	Extension of Santa Clarita Parkway from Soledad Canyon Road to Via Princessa (from zero to six lanes).	2020-2022	Undetermined ¹⁰	Santa Clarita Parkway from Soledad Canyon Road to Via Princessa (7.2mi)
S-19	Santa Clarita Parkway Extension (3 of 3) (Project ID: LA9910017) ⁸	Extension of Santa Clarita Parkway (3 Of 3) from Via Princessa to SR-14 (from zero to six lanes).	2020-2022	Undetermined ¹⁰	Via Princessa to SR-14 (5.0mi)
S-20	Lyons Avenue/ Dockweiler Drive Extension (Project ID: LAF7105) ⁸	Extension of Lyons Avenue from its existing terminus at Railroad Avenue eastward to Dockweiler Drive to provide a T-intersection, and northwest to connect with the intersection of Arch Street and 12th Street and southeast toward the General Plan alignment for Dockweiler Drive at The Master's University.	2018-2019	Air Quality and Global Climate Change (localized construction emissions); Noise and Vibration (construction noise) ¹²	Lyons Avenue from Railroad Avenue on the west to the future Master's University Master Plan Dockweiler extension to the east (7.0mi)

Sources: 1 City of Santa Clarita 2011a; 2 City of Santa Clarita 2010b; 3 City of Santa Clarita 2017b; 4 City of Santa Clarita 2011b; 5 City of Santa Clarita 2010a; 6 City of Santa Clarita 2010c; 7 City of Santa Clarita 2011c; 8 SCAG 2019; City of Santa Clarita 2012; 10 Hunter 2017; 11 CEQAnet 2017; 12 City of Santa Clarita 2017a

Table 3.19-A-6 City of Los Angeles

Map ID	Project Name/Number	Description	Status/Timing	Potential Significant Unavoidable Impacts	Location (Approximate Distance from HSR Alignment)
LA-1	Connecting LAX - Landside Access Modernization Program ¹	<p>Five main components to predictable and reliable commute to and from the Los Angeles International Airport:</p> <ul style="list-style-type: none"> Automated People Mover - an elevated 2.25-mile electric train system comprised of six stations that will connect travelers to the regional rail system, rental car facility and other drop-off/pick-up locations. Intermodal Transportation Facility – a facility for airport parking and passenger drop-offs and pick-ups from personal vehicles, buses, shuttles, taxis, and ride-sharing services. Consolidated Rent-A-Car - a facility that will house 23 rental car locations in one area with easy access to the 405 and 105 Freeways. Roadway Improvements - designed to alleviate traffic congestion in and around the airport. Airport Metro Connector Station – This station will connect the Los Angeles International Airport to the regional transportation system. This project is being funded and built by Metro.¹ 	2018-2035	None ¹	Los Angeles International Airport (18mi)
LA-2	Foothill Boulevard Traffic Signal Corridor Project (Project ID: LAF7306) ⁴	(1) Traffic signal synchronization, equipment upgrades and intersection operational improvements for 28 intersections along Foothill Boulevard between Lowell Avenue and Crown Avenue. (2) Installs two (2) closed circuit television cameras and wireless network communications infrastructure which will provide for expansion of Advanced Transportation Management System along Foothill Boulevard.	2018-2021	Undetermined	Along Foothill Boulevard between Lowell Avenue and Crown Avenue (5.0mi)
LA-3	Reconfigure San Fernando Road from Fletcher Drive to I-5 Freeway (Project ID: LAE1440) ⁴	Installation of left-turn channelization, improve pedestrian amenities, install wider sidewalks, median islands and landscaping where feasible between Cazador Street to just south of Alice Street.	2018-2019	Undetermined	San Fernando Road between Cazador Street and Alice Street (8.9mi)

Map ID	Project Name/Number	Description	Status/Timing	Potential Significant Unavoidable Impacts	Location (Approximate Distance from HSR Alignment)
LA-4	Foothill Boulevard and Sierra Highway Intersection Improvements (Project ID: LAF3144) ²	Widening of Foothill Boulevard to provide an additional northbound through lane, restripe Sierra Highway to provide additional westbound right turn lane, and signalize the intersection. New lane length is approximately 280 feet.	Completed	Undetermined	Foothill Boulevard and Sierra Highway intersection (5.8mi)
LA-5	Lighting, and Safety Improvements on Road Leading to Hansen Dam Recreation Area. (Project ID: LAE0346) ²	Access improvements including hillside stabilization and parking lot rehabilitation along Osborne Street between Glenoaks Boulevard and Dronfield Avenue.	Completed	Undetermined	Between Glenoaks Boulevard and Dronfield Avenue (0.3mi)
LA-6	Transportation Enhancement to Children's Museum of Los Angeles (Project ID: LAE1601) ²	Construction of new sidewalks, curb, gutter, ADA-compliant access ramps, and street trees along Foothill Boulevard and Osborne Street, adjacent to the future Children's Museum of Los Angeles.	Completed	Undetermined	Intersection of Foothill Boulevard and Osborne Street (0.1mi)
LA-7	Sherman Way Widening between Whitsett Avenue to Hollywood Freeway (Project ID: LAF7125) ⁴	(1) Widening of a south side of Sherman Way by approximately 20 feet to provide a through and dedicated right-turn only lane onto the Hollywood Freeway southbound on-ramp. (2) Installation of pedestrian facilities and landscaping. (3) Widening of the outside curb lane by 6 feet to accommodate safer bike travel.	2018-2019	Undetermined	Sherman Way between Whitsett Avenue to Hollywood Freeway (2.1mi)
LA-8	Brighton to Roxford Double Track Project ⁵	Connecting the new double track to the Brighton Siding extension that is being developed as part of the Empire Avenue and Buena Vista Grade Separation Project to the 6,109 foot existing Sun Valley Siding between CP McGinley and CP Sheldon; while providing quiet zone ready improvements to 16 at-grade crossings within project area.	Planned	CE ⁵	Control Point Brighton, in the City of Burbank, to Control Point Roxford, in Sylmar on the Antelope Valley Line (0.0mi)
--	North County Bikeways (Project ID: LAF3519) ⁴	Installation of three Class II and three Class III bikeway segments, including signage, striping, road widening, & road shoulder improvements (approximately 3.88 miles of bike lanes and 3.18 miles of bike routes).	2018/2019	Undetermined	City of Los Angeles

Map ID	Project Name/Number	Description	Status/ Timing	Potential Significant Unavoidable Impacts	Location (Approximate Distance from HSR Alignment)
--	Construction of Bicycle Friendly Street treatments (Project ID: LAF5519) ⁴	Construction of Bicycle Friendly Street treatments: at least 100 directional signs, at least 500 shared lane markings, and bicycle detectors and markings provided to at least 15 signalized intersections. Other treatments will include traffic calming devices and diversion, which include at least one diverter and roundabout.	2018/2019	Undetermined	City of Los Angeles
--	Curb-Side Bicycle Parking (Project ID: LAF5525) ⁴	Construction of curb-side bicycle parking (bicycle corral) that will serve each Council District. The project requires surface modifications to curbside parking areas for installing at least 150 bike racks.	2018/2019	Undetermined	City of Los Angeles
--	LADOT Streets for People (Project ID: LAF7814) ⁴	Installation of 12 parklets and 3 plazas. The limits of the parklets will be equal to two curbside parking spaces (approximately 40x 6). The plaza limit varies ranging from 2,000 to 6,000 SF.	2018/2019	Undetermined	City of Los Angeles
--	Grouped Projects for Bridge Rehabilitation and Reconstruction (Project ID: LA000800) ⁴	Widening of narrow pavements or reconstruction of bridges (no additional travel lanes).	2018-2023	Undetermined	City of Los Angeles
--	Group projects for pavement resurfacing and or rehabilitation on local roads throughout County (Project ID: LA11G1) ⁴	Pavement resurfacing, rehabilitation, reconstruction, AC overlays, road maintenance to prevent and eliminate hazards, no lane additions. There are projects in the grouped project listing that contain projects with toll credits.	2018-2024	Undetermined	City of Los Angeles
--	Group projects for bicycle and pedestrian facilities (Project ID: LA11G2 & LA11G2N) ⁴	Projects to upgrade, create, maintain, enhance, or eliminate hazards for pedestrians and cyclist facilities throughout Los Angeles County.	2018-2020	Undetermined	City of Los Angeles

Map ID	Project Name/Number	Description	Status/ Timing	Potential Significant Unavoidable Impacts	Location (Approximate Distance from HSR Alignment)
--	Group projects for safety and operating improvements on the local highway system throughout the County (Project ID: LA11G3) ⁴	Railroad/highway crossing, safer Federal-aid system roads, shoulder improvements, projects that correct, improve, or eliminate a hazardous location or feature, traffic control devices and operating assistance, signalization projects (individual intersections), pavement marking demonstration projects, truck climbing LA.	2018-2020	Undetermined	City of Los Angeles
--	Group projects for safety and operating improvements on the local highway system throughout the County (Project ID: LA11G4) ⁴	Group projects for planting, landscaping, transportation system betterments, beautification and scenic easements throughout Los Angeles County (no lane additions).	2018-2022	Undetermined	City of Los Angeles
--	Group projects for directional and informational signage on local roads throughout the County (Project ID: LA11G5 and LA11G5N) ⁴	Directional and informational signs, sign removals, and/or systems to improve or upgrade signage mechanisms.	2018-2022	Undetermined	City of Los Angeles
--	Grouped Projects for Safety Improvement (Project ID: LASRTS) ⁴	Establishment of Safe Route to School Program (ATP Program).	2018-2020	CE/NA ⁴	City of Los Angeles

Sources: 1 Los Angeles World Airports, 2017; 2 SCAG 2017; 3 SCAG 2016; 4 SCAG 2019; 5 Balderrama, 2017;

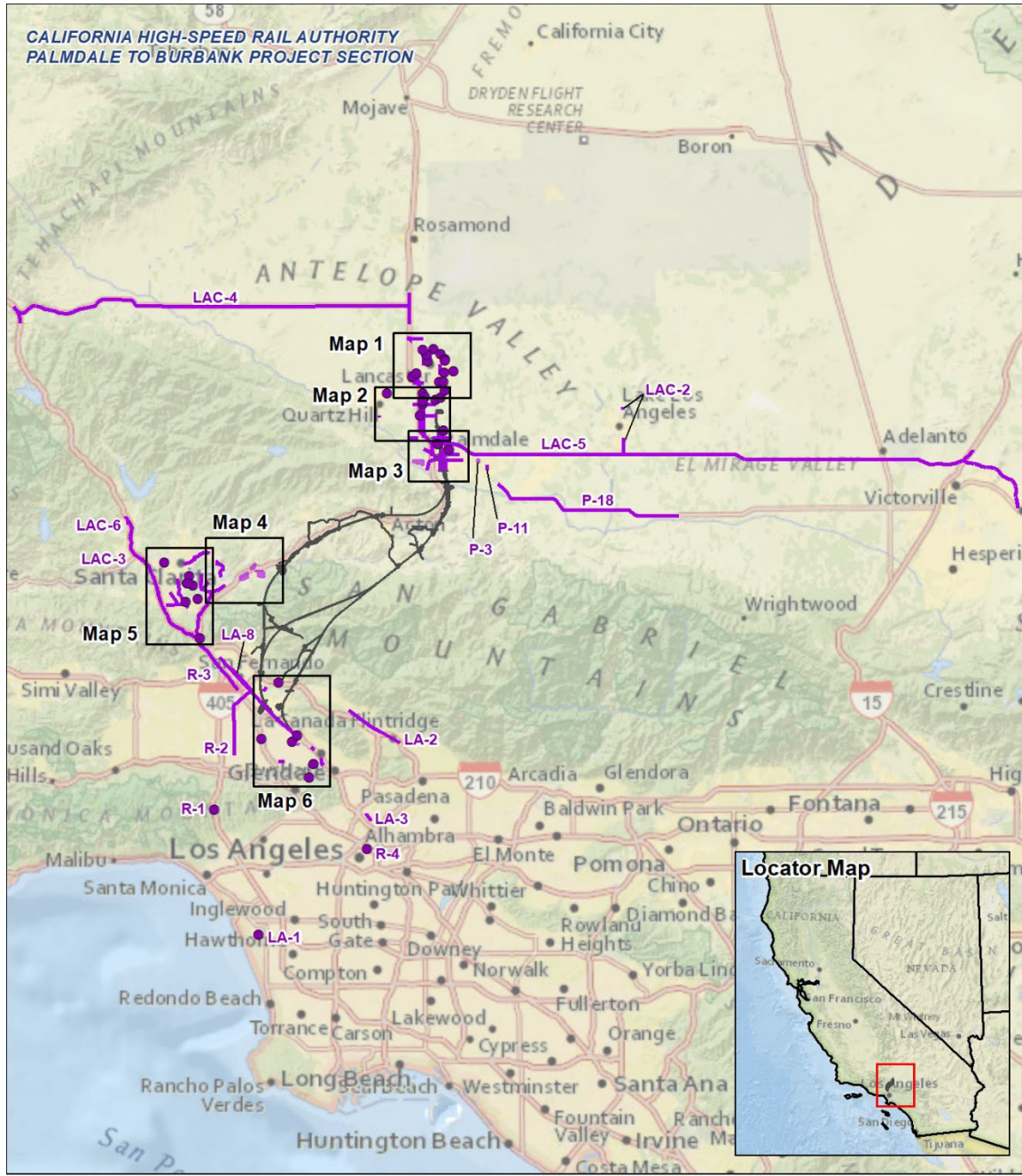
Table 3.19-A-7 City of Burbank

Map ID	Project Name/Number	Description	Status/Timing	Potential Significant Unavoidable Impacts	Location (Approximate Distance from HSR Alignment)
Plans and Projects					
--	Burbank 2035 General Plan ¹	Establishes zoning and land use policies that will guide development in Burbank through the horizon year 2035.	Adopted in 2013	Air Quality and Global Climate Change; Cultural and Paleontological Resources; Noise and Vibration; Population, Housing, and Employment; Public Utilities and Energy; Transportation; Cumulative (Air Quality and Global Climate Change; Noise and Vibration; Population, Housing, and Employment; Public Utilities and Energy; Transportation) ²	City of Burbank
--	Golden State District Specific Plan ³	Preparation of a specific plan in anticipation of Burbank's proposed high speed rail station for a 640-acre commercial-industrial area adjacent to Burbank Airport	Specific plan in progress	TBD	Adjacent to the Burbank Hollywood Airport to the east and south. Generally bounded by San Fernando Boulevard and I-5 to the north, Empire Avenue to the south, Buena Vista Street to the east, and Bob Hope Airport to the west
B-1	Proposed Airport Hotels ⁴	Construction of a new hotels and/or office buildings	Application submitted	TBD	2500 North Hollywood Way (0.0mi)
B-2	Avion Project (3001 North Hollywood Way) ⁵	Construction of a business park on approximately 61.5 acres of vacant land adjacent to the Burbank Bob Hope Airport.	DEIR in progress	TBD	3001 North Hollywood Way (0.0mi)

Map ID	Project Name/Number	Description	Status/Timing	Potential Significant Unavoidable Impacts	Location (Approximate Distance from HSR Alignment)
Transportation Projects					
B-3	Hollywood Burbank Airport Gate Replacement Project ⁶	This new terminal would replace the existing passenger terminal, which does not meet current Federal Aviation Administration (FAA) standards. The preferred location of this new terminal is an undeveloped site in the northeast quadrant of the airport that is currently used for airport passenger and employee parking, movie equipment staging, and truck/recreational vehicle parking. A site located on the southwest quadrant of the airport is also under consideration	Projected to open in 2025	Air Quality and Global Climate Change ⁷	2627 North Hollywood Way (0.0mi)
B-4	Burbank Boulevard Widening (Project ID: LA0C8046) ⁸	Widening of Burbank Boulevard 13 feet on both sides (adding one lane in each direction) from Lankershim Boulevard to Cleon Avenue.	2016-/2020	Undetermined	Burbank Boulevard between Lankershim Boulevard and Cleon Avenue (2.1mi)
B-5	Burbank Channel Bikeway Project ⁹	Extension of the Burbank Channel Bikeway the path from Alameda Avenue to the Downtown Burbank Metrolink Station. Construction of a Class I bicycle and pedestrian path along the Burbank Western Flood Control Channel. The project includes bikeway treatments at three controlled local street crossings: Flower Street/Olive Avenue, Verdugo Avenue/bike path, Providencia Avenue/Lake Street, and a grade-separated crossing at Alameda Avenue.	In progress	TBD	Burbank Western Flood Control Channel from Olive Avenue/Flower Street to Alameda Avenue (2.1mi)
B-6	Olive Avenue/Verdugo Avenue/Sparks Street Intersection Improvement Project ¹⁰	Reconfiguration of the six-legged intersection at Olive Avenue/Verdugo Avenue/Sparks Street with the goals of improving efficiency and pedestrian and vehicle safety.	Planned	Undetermined	Olive Avenue/Verdugo Avenue/Sparks Street Intersection (2.3mi)
B-7	Los Angeles River Bridge Project ¹¹	Construction of a bicycle and pedestrian facility that would add a connection between the City of Burbank and the City of Los Angeles over the Los Angeles River, including approximately 340 feet of Class III bike lanes on a portion of Bob Hope Drive, a new bridge structure spanning the Los Angeles River, and a short Class I bike path connecting the bridge to Forest Lawn Drive.	Planned	Undetermined	Over the Los Angeles River between Bob Hope Drive and Forest Lawn Drive (3.3mi)

Map ID	Project Name/Number	Description	Status/Timing	Potential Significant Unavoidable Impacts	Location (Approximate Distance from HSR Alignment)
B-8	Leland Way Streetscape Project ¹²	Landscape design and engineering plans that include potential roadway reconfiguration and possible landscape treatments that could include installation of vines, shrubs and trees along the Channel Cap and Caltrans sound wall.	Planned	Undetermined	Leland Way and Broadway (1.0mi)

Sources: 1 City of Burbank 2013b; 2 City of Burbank 2013a; 3 City of Burbank 2017d; 4 City of Burbank 2017e; 5 City of Burbank 2017a; 6 Burbank-Glendale-Pasadena Airport Authority 2016; 7 City of Burbank 2016; 8 SCAG 2016a; 9 City of Burbank 2017f; 10 City of Burbank 2017g; 11 City of Burbank 2017c; 12 City of Burbank 2017b



PRELIMINARY DRAFT/SUBJECT TO CHANGE - HSR ALIGNMENT IS NOT DETERMINED
 Source: HSR Authority 10/2018; CirclePoint 4/2018

January 9, 2019

Development Project
 Project Footprint

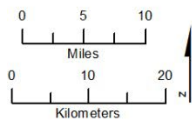
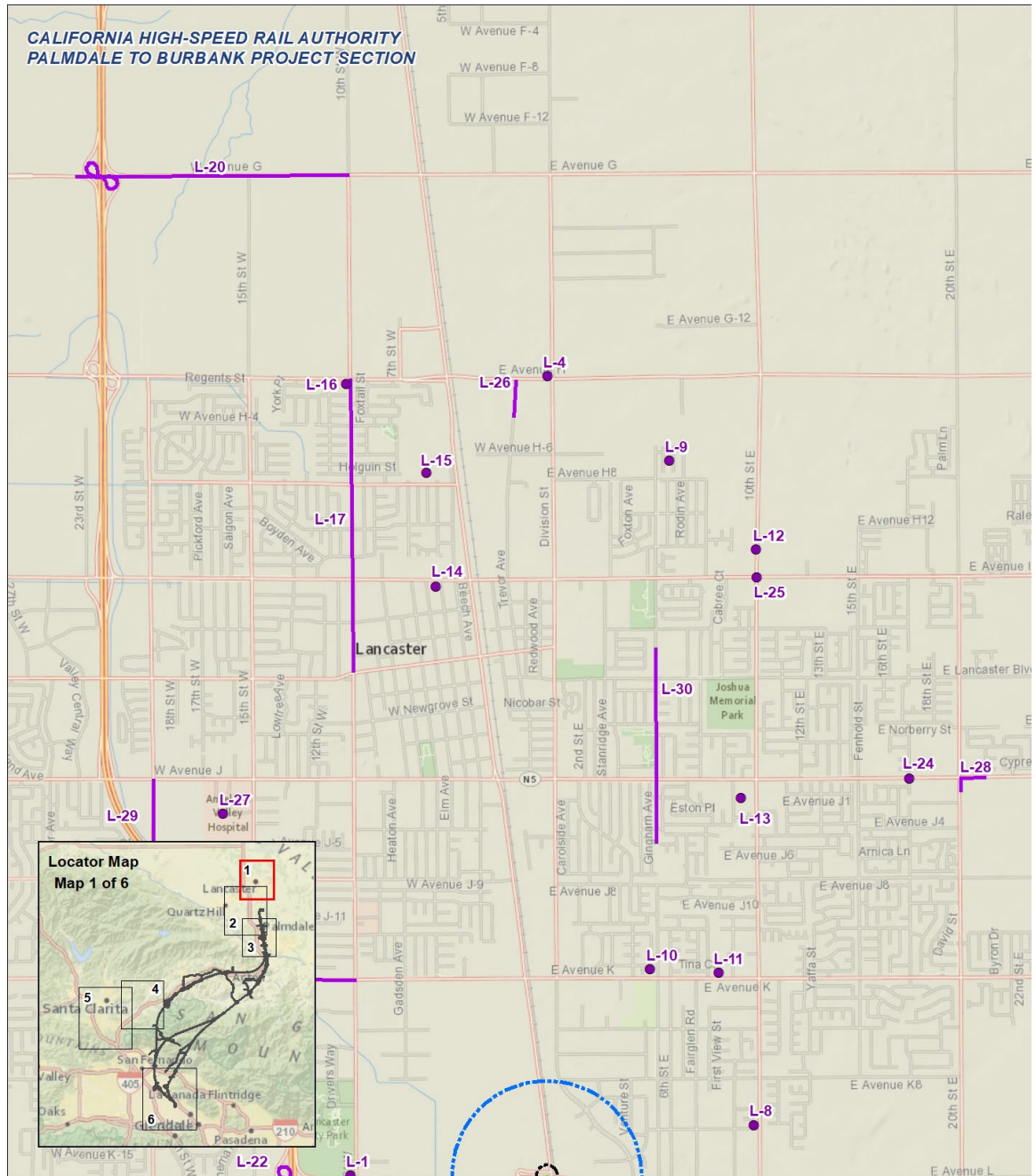


Figure 3.19-A-1 Cumulative Projects Overview Map



PRELIMINARY DRAFT/SUBJECT TO CHANGE - HSR ALIGNMENT IS NOT DETERMINED
 Source: HSR Authority 10/2018; CirclePoint 4/2018
 January 9, 2019

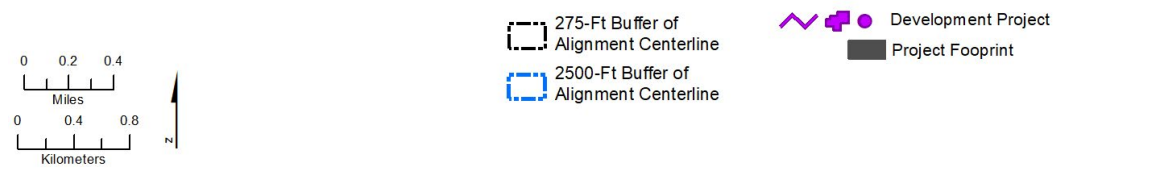
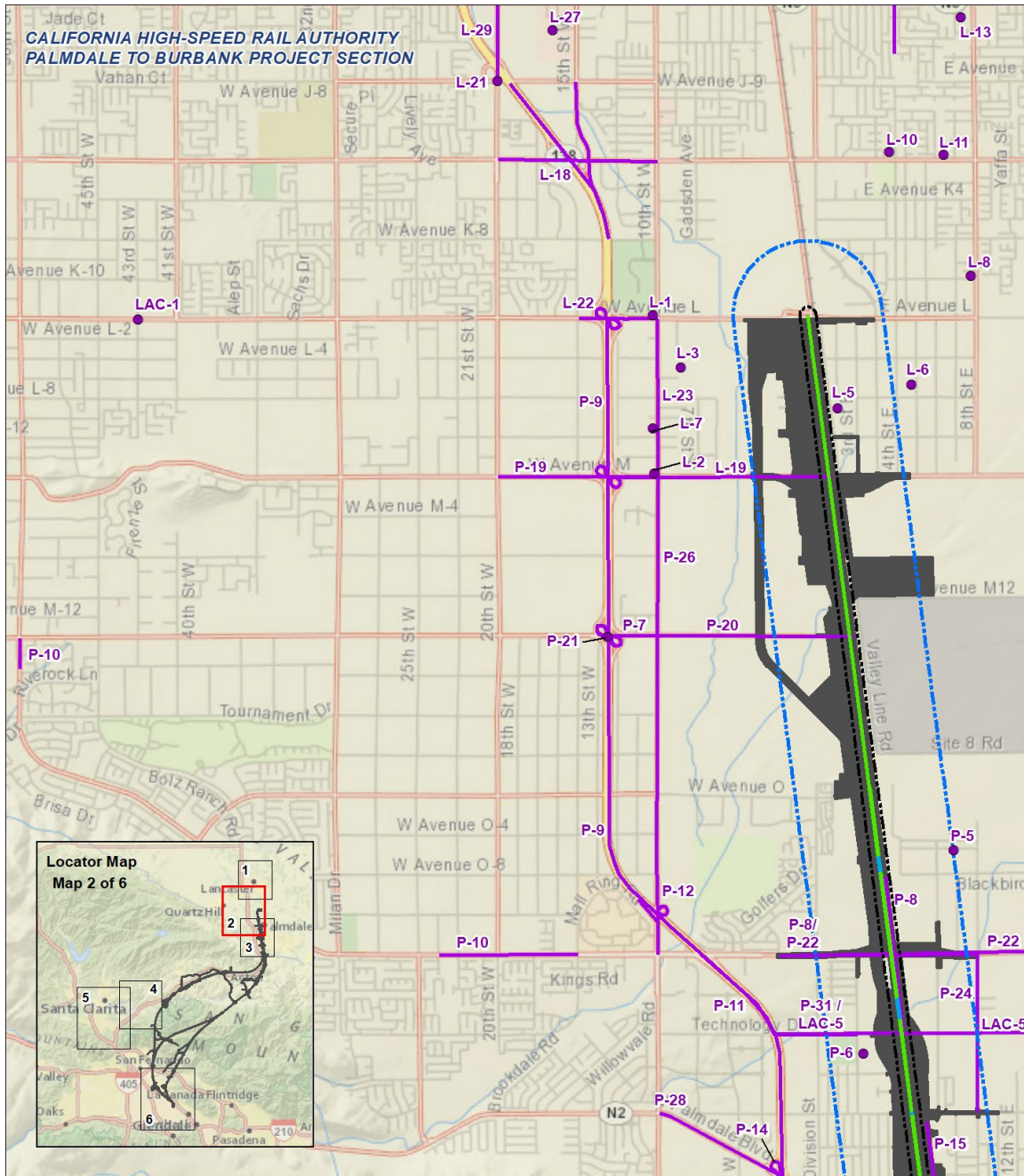


Figure 3.19-A-2 Cumulative Projects Inset Map 1/6 – Lancaster Area



PRELIMINARY DRAFT/SUBJECT TO CHANGE - HSR ALIGNMENT IS NOT DETERMINED
 Source: HSR Authority 10/2018; CirclePoint 4/2018

January 9, 2019

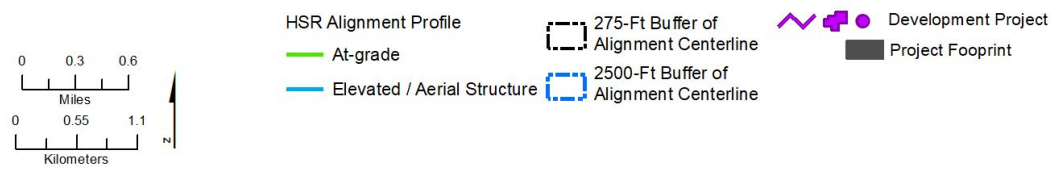
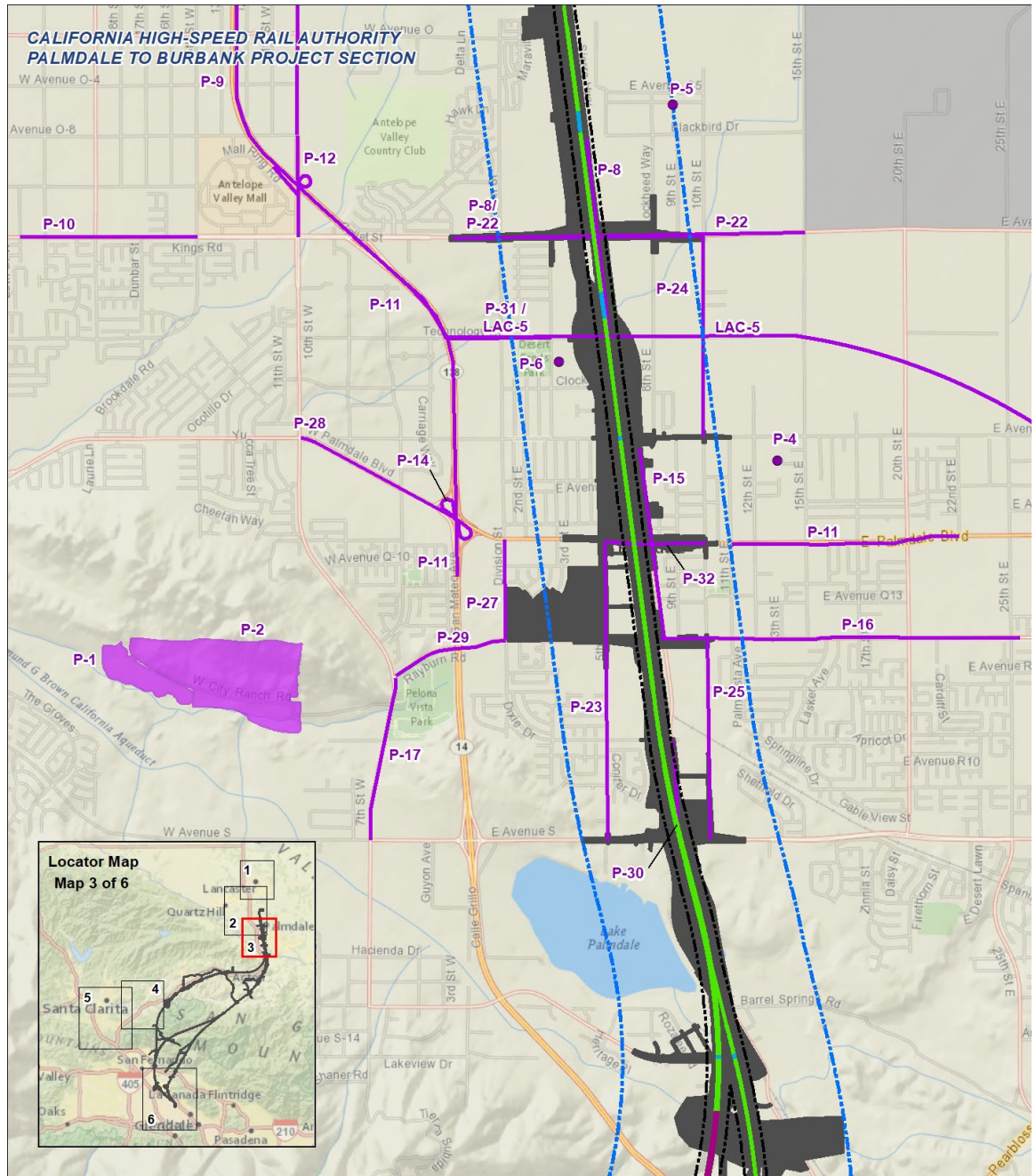


Figure 3.19-A-3 Cumulative Projects Inset Map 2/6 – Northern Palmdale Area



PRELIMINARY DRAFT/SUBJECT TO CHANGE - HSR ALIGNMENT IS NOT DETERMINED
 Source: HSR Authority 10/2018; CirclePoint 4/2018

January 9, 2019

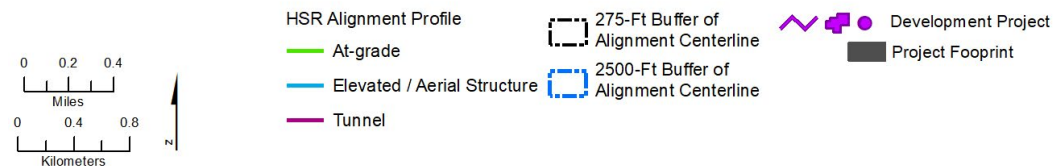
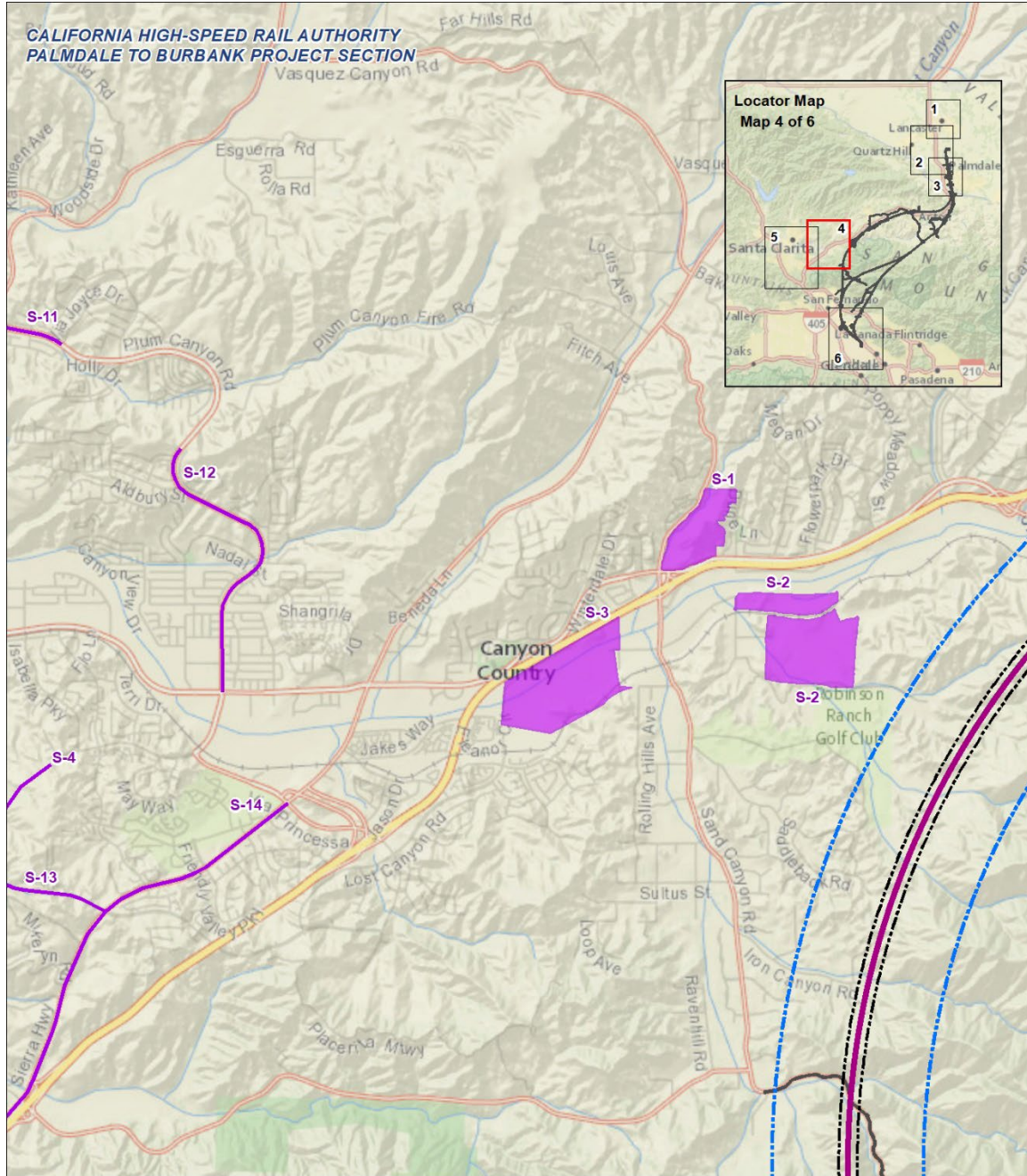


Figure 3.19-A-4 Cumulative Projects Inset Map 3/6 – Southern Palmdale Area



PRELIMINARY DRAFT/SUBJECT TO CHANGE - HSR ALIGNMENT IS NOT DETERMINED
 Source: HSR Authority 10/2018; CirclePoint 4/2018
 January 9, 2019

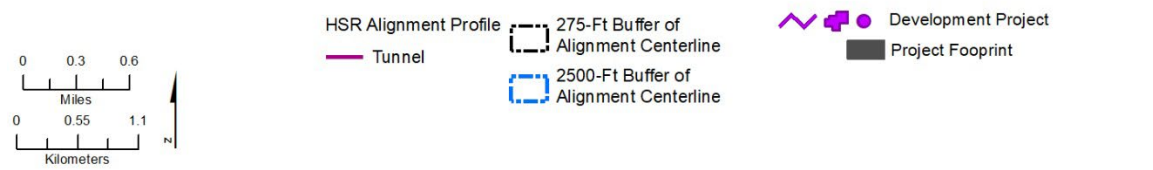
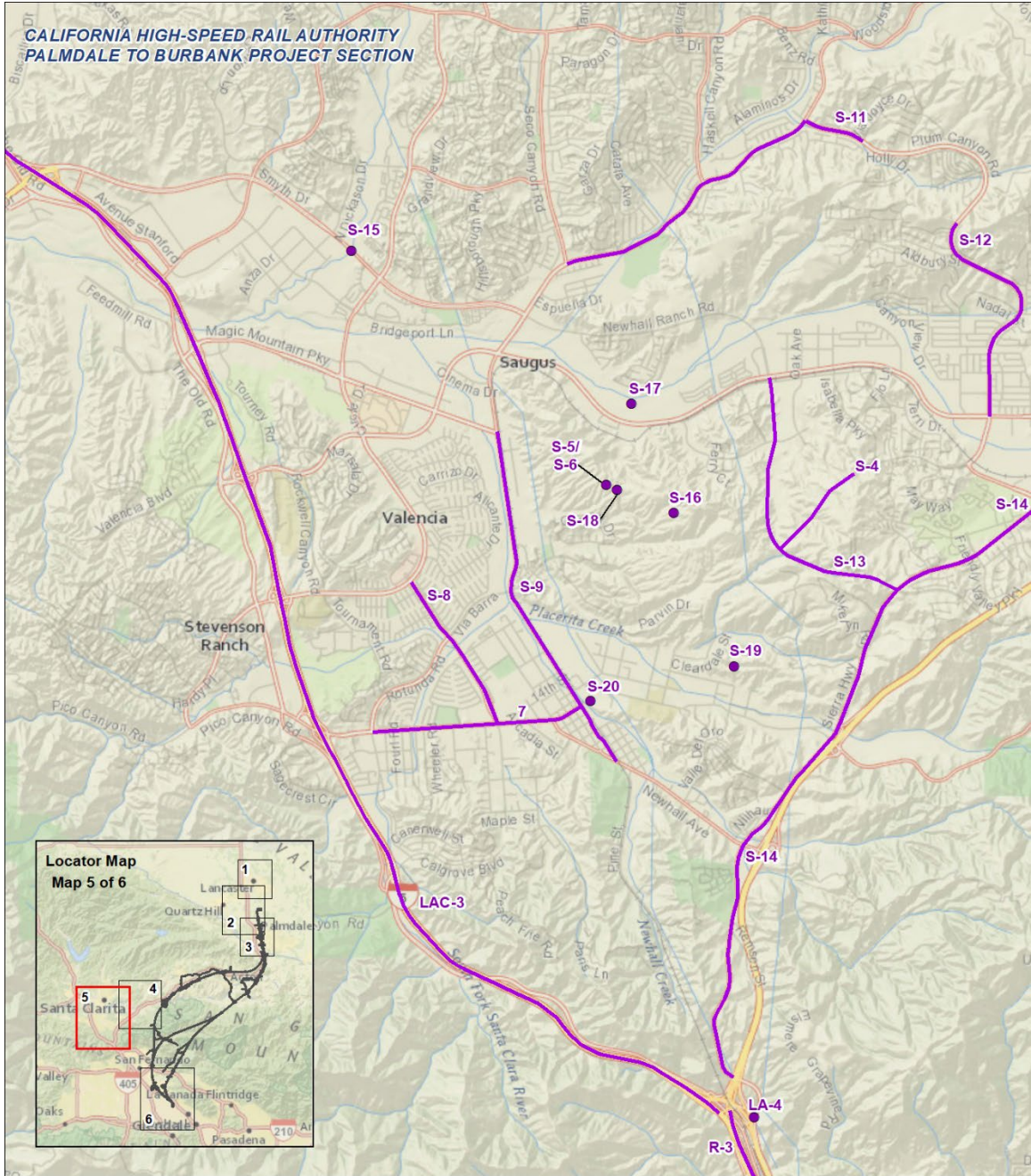


Figure 3.19-A-5 Cumulative Projects Inset Map 4/6 – Eastern Santa Clarita Area



PRELIMINARY DRAFT/SUBJECT TO CHANGE - HSR ALIGNMENT IS NOT DETERMINED
 Source: HSR Authority 10/2018; CirclePoint 4/2018

January 9, 2019

Development Project
 Project Footprint

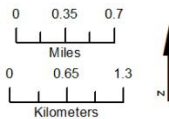
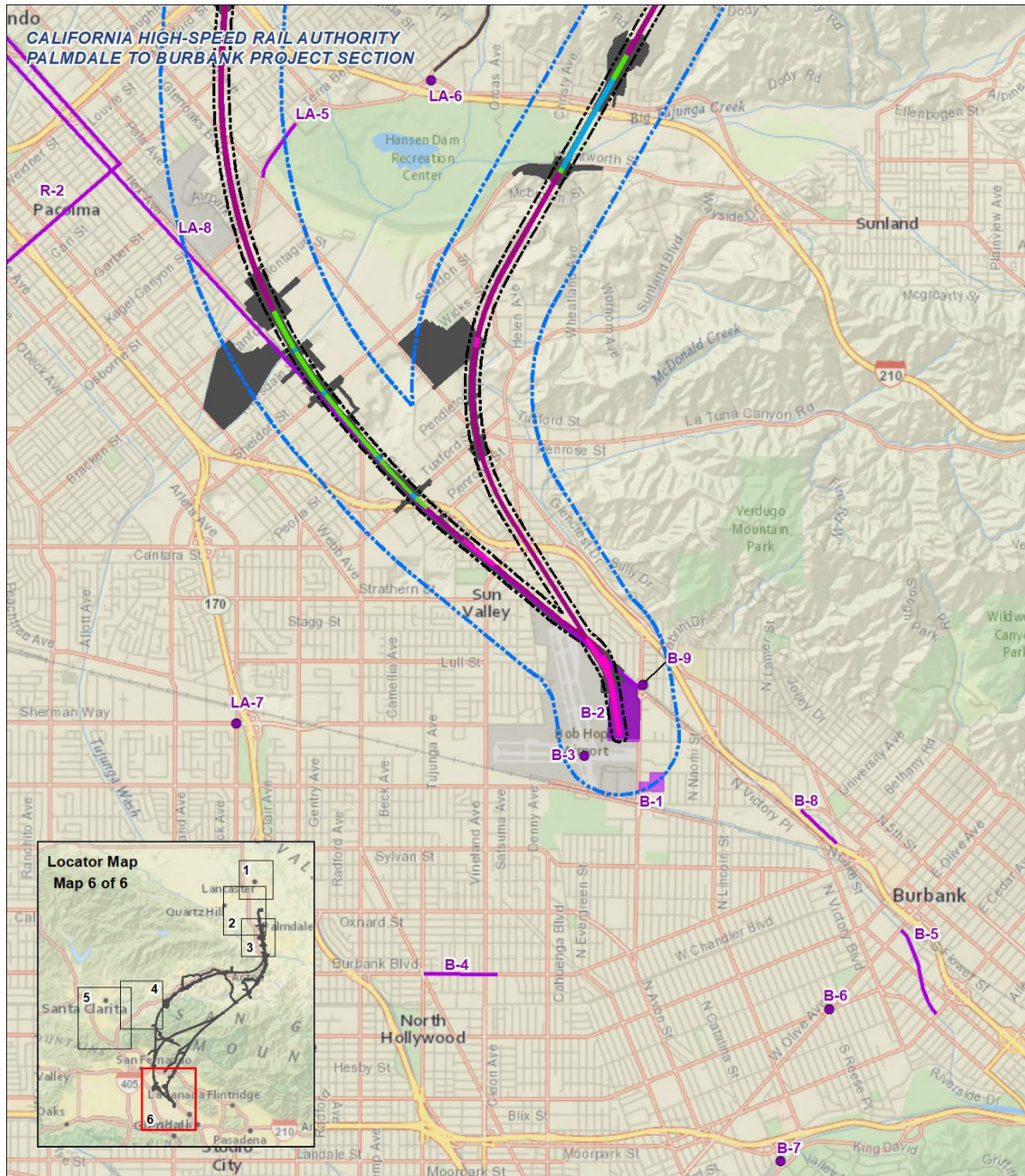


Figure 3.19-A-6 Cumulative Projects Inset Map 5/6 – Western Santa Clarita Area



PRELIMINARY DRAFT/SUBJECT TO CHANGE - HSR ALIGNMENT IS NOT DETERMINED
 Source: HSR Authority 10/2018; CirclePoint 4/2018

January 9, 2019

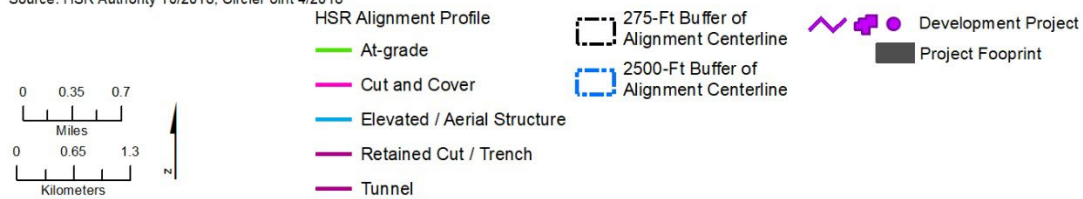


Figure 3.19-A-7 Cumulative Projects Inset Map 6/6 – Burbank Area

References

- Angeles Metropolitan District (LA Metro). 2017a. *East San Fernando Valley Transit Corridor*. 2017. <https://www.metro.net/projects/east-sfv/> (accessed April 10, 2018).
- _____. 2017b. Plain to Train Connection Flyer. 2017. https://media.metro.net/projects_studies/BurbankAirport-North/ConstructionKick-OffMeeting_flyer.pdf (accessed October 2, 2017).
- _____. 2019. *Link Union Station DRAFT - Environmental Impact Report*. 2017. http://media.metro.net/projects_studies/regionalrail/LinkUS%E2%80%93Draft_EIR.pdf (accessed August 15, 2019).
- Azhand, Mike. 2017. Los Angeles County Department of Public Works. Telephone communication with Nicole Cuevas, Circlepoint, Assistant Environmental Planner, 2017.
- BidNet. 2017. *10th Street West and Avenue J Improvements (HSIP)*. 2017. <http://www.bidnet.com/closed-government-contracts/10th-street-west---avenue-j-improvements--hsip-?itemId=430187585> (accessed May 15, 2017).
- Balderrama, Brian. 2017. Senior Director, Los Angeles Metropolitan District (LA Metro). Email communication with Nicole Cuevas, Assistant Environmental Planner, Circlepoint. August 7, 2017.
- Behen, Mike. Transportation/Special Projects Manager, Department of Public Works, City of Palmdale, CA. Personal communication sending the *Development Summary April 2015 – March 2016* for the City of Palmdale to Skyler Murphy, Rincon Consultants, Inc.. May 19, 2016.
- Bolanos, Claudia. 2017. Management Analyst, City of Lancaster. Telephone and email communication with Nicole Cuevas, Assistant Environmental Planner, Circlepoint. August 3, 2017.
- Builders Notebook. 2017. *The Construction of Rancho Vista Boulevard Grade Separation Project*. 2017. http://www.buildersnotebook.com/project_detail.cfm?action=view&p_id=4952 (accessed May 15, 2017).
- Burbank-Glendale-Pasadena Airport Authority. 2016. Environmental Impact Report for a Replacement Airline Passenger Terminal at Burbank Bob Hope Airport, Volume 1. Available at: <https://burreplacementterminal.com/pdf/BUR-FEIR16-Volume1.pdf>. (accessed January 25, 2019).
- California Department of Transportation (Caltrans). 2000. *Draft Environmental Impact Report/ Environmental Assessment: State Route 138 Widening Project from Avenue T to State Route 18 Junction through the Communities of Littlerock, Pearblossom, Llano and the City of Palmdale*. September 2000. http://www.dot.ca.gov/d7/env-docs/docs/SR138_eir_ea.pdf (accessed August 16, 2017).
- _____. 2001. *Final Environmental Impact Report/Environmental Assessment and Section 4(f) Evaluation for the State Route 138 Widening Project from Avenue T to State Route 18*. March 2001. http://www.dot.ca.gov/d7/env-docs/docs/Final_SR138EIR_EASubmittal.pdf (accessed June 15, 2017).
- _____. 2008. *I-5 HOV/Truck Lanes Project: SR-14 to Parker Road, Draft Environmental Impact Report/Environmental Assessment*. December 2008. http://www.dot.ca.gov/d7/env-docs/docs/I-5%20HOV_Truck_%20Lanes%20EIR_EA.pdf (accessed August 16, 2017).
- _____. 2013. *I-5 HOT Lane Project Draft Supplemental EIR/Environmental Reevaluation*. March 2013. http://www.dot.ca.gov/d7/env-docs/docs/07-2332E%20LA005%20Draft%20SuppEIR-Reeval_03-08-13.pdf (accessed June 15, 2017).

- _____. 2016a. *Avenue R Safety Improvement Project*. December 2016.
http://www.cityofpalmdale.org/Portals/0/Documents/Public%20Works/Avenue%20R_ISE_A_fullappendices12_12_16.pdf?ver=2016-12-15-131512-150. (accessed May 15, 2017).
- _____. 2016b. *High Desert Corridor Project: Final Environmental Impact Report/Environmental Impact Statement and Section 4(f) (De Minimis Findings)*. June 2016.
http://www.dot.ca.gov/d7/env-docs/docs/hdc/HDC%20FED--Vol%201--062016_FINAL.pdf (accessed August 15, 2017).
- _____. 2017a. *Highway Safety Improvement Program (HSIP) Delivery Status Report for Delayed Projects*. April 2017.
https://www.google.com/url?sa=t&rct=j&q=&esrc=s&source=web&cd=3&cad=rja&uact=8&ved=0ahUKEwjh_6u6odrVAhUG4mMKHZ8yDL4QFggzMAI&url=http%3A%2F%2Fwww.dot.ca.gov%2Fhq%2FLocalPrograms%2FHSIP%2F2017%2FMar%2FDelayedProjects2017Q2.xlsx&usq=AFQjCNFiQLE7siOtXmll831VxWR7G_BIGQ. (accessed July 14, 2017).
- _____. 2017b. *Northwest State Route 138 Corridor Improvement Project: Final Environmental Impact Report/Environmental Impact Statement and Section 4(f) Evaluation*. June 2017.
http://www.dot.ca.gov/d7/env-docs/docs/NW_138-FED-06_28_17.pdf (accessed August 16, 2017).
- _____. 2018. *State Route-14/Palmdale Boulevard (SR-138) Interchange Improvement Project Initial Study with Proposed Mitigated Negative Declaration*. Palmdale.
http://www.cityofpalmdale.org/Portals/0/Documents/Public%20Works/Palmdale_Draft_IS_-_December_2018%20%281%29.pdf (accessed August 15, 2019).
- CEQAnet. 2017. CEQAnet Database Query. <http://www.ceqanet.ca.gov/QueryForm.asp>.
- City of Burbank. 2013a. *Burbank2035: Environmental Impact Report*. February 2013.
<http://www.burbankca.gov/home/showdocument?id=23548> (accessed May 16, 2017).
- _____. 2013b. *Burbank2035: General Plan*. February 2013.
<http://www.burbankca.gov/home/showdocument?id=23448> (accessed May 16, 2017).
- _____. 2016. *Environmental Impact Report for a Replacement Airline Passenger Terminal at Burbank Bob Hope Airport: Volume I*. June 2016.
<http://www.burbankca.gov/home/showdocument?id=36050> (accessed May 16, 2017).
- _____. 2017a. "Avion" Project. <http://www.burbankca.gov/departments/community-development/planning/current-planning/avion> (accessed May 16, 2017).
- _____. 2017b. *Information Page: Leland Way Streetscape Project*.
<http://www.burbankca.gov/departments/community-development/transportation/projects/leland-way-streetscape-project> (accessed April 10, 2018).
- _____. 2017c. *Information Page: Los Angeles River Bridge Project*.
<http://www.burbankca.gov/departments/community-development/transportation/projects/la-river-bridge> (accessed April 10, 2018).
- _____. 2017d. *Golden State District: What is the Golden State Specific Plan?*
<https://www.goldenstatedistrict.com/what-is-the-golden-state-specific-plan/> (accessed May 16, 2017).
- _____. 2017e. *Proposed Airport Hotels*. <http://www.burbankca.gov/departments/community-development/planning/current-planning/proposed-airport-hotels> (accessed May 16, 2017).
- _____. 2017f. *Projects: Bicycle and Pedestrian Projects*. 2017.
<http://www.burbankca.gov/departments/community-development/transportation/projects> (accessed June 15, 2017).

- _____. 2017g. *Projects: Street and Freeway Projects*. 2017.
<http://www.burbankca.gov/departments/community-development/transportation/projects>
 (accessed June 15, 2017).
- City of Lancaster. 1991. *Specific Plan Lancaster Business Park Phase III*. January 1991.
<http://www.cityoflanasterca.org/home/showdocument?id=13296> (accessed May 5, 2017).
- _____. 1996. *Fox Field Industrial Corridor Specific Plan*. May 1996.
<http://www.cityoflanasterca.org/home/showdocument?id=7638> (accessed May 5, 2017).
- _____. 2007a. *Amargosa Creek Specific Plan: Final Program Environmental Impact Report*. July 2007. <http://www.cityoflanasterca.org/home/showdocument?id=3213> (accessed May 5, 2017).
- _____. 2007b. *Amargosa Creek Specific Plan*. August 2007.
<http://www.cityoflanasterca.org/about-us/departments-services/development-services/planning/advanced-planning/amargosa-creek-specific-plan> (accessed May 5, 2017).
- _____. 2008a. *Downtown Lancaster Specific Plan Final Environmental Impact Report*. August 2008. <http://www.cityoflanasterca.org/about-us/departments-services/development-services/planning/advanced-planning/downtown-lanaster-specific-plan> (accessed April 17, 2017).
- _____. 2008b. *Downtown Lancaster Specific Plan*. September 2008.
<http://www.cityoflanasterca.org/home/showdocument?id=5446> (accessed April 17, 2017).
- _____. 2009a. *General Plan 2030 Program Environmental Impact Report*. April 2009.
<http://www.cityoflanasterca.org/home/showdocument?id=11351> (accessed April 14, 2017).
- _____. 2009b. *General Plan 2030*. July 2009.
<http://www.cityoflanasterca.org/home/showdocument?id=9323> (accessed April 14, 2017).
- _____. 2014. *Capital Improvement Program: Fiscal Year 2014-2015 Appropriation and Projected FY 2015/2016 through 2018/2019*.
<http://www.cityoflanasterca.org/home/showdocument?id=24734>. (accessed May 15, 2017).
- _____. 2016a. *Capital Improvement Program: Adopted FY 2016-2017 and FY 2017-2018 Budget and Project FY 2018-2019 through 2020-2021*.
<http://www.cityoflanasterca.org/home/showdocument?id=32400>. (accessed May 15, 2017).
- _____. 2016b. *Residential Development Summary Report*. July 2016.
<http://www.cityoflanasterca.org/home/showdocument?id=1251> (accessed March 29, 2018).
- City of Los Angeles. 1995. *Los Angeles Citywide General Plan Framework: Draft Environmental Impact Report*. January 1995.
http://cityplanning.lacity.org/HousingInitiatives/HousingElement/FrameworkEIR/GPF_DraftEIR/GPF_FEIR_DEIR_Title.pdf (accessed May 15, 2017).
- _____. 1996. *Arleta-Pacoima Community Plan*. November 1996.
<https://planning.lacity.org/complan/pdf/arlcp.txt.pdf> (accessed May 15, 2017).
- _____. 1997. *Sunland-Tujunga-Lake View Terrace-Shadow Hills-East La Tuna Canyon Community Plan*. November 1997. <https://planning.lacity.org/complan/pdf/sldcptxt.pdf> (accessed May 15, 2017).

- _____. 1999. *Sun Valley-La Tuna Canyon Community Plan*. August 1999.
<https://planning.lacity.org/complan/pdf/svycptxt.pdf> (accessed May 15, 2017).
- _____. 2008. *Initial Study/Negative Declaration for Magnolia Boulevard Widening: Cahuenga Boulevard to Vineland Avenue*. June 2008. http://clkrep.lacity.org/onlinedocs/2008/08-2494_misc_6-5-08.pdf (accessed August 17, 2017).
- _____. 2009. *Draft Environmental Impact Report, Sunland-Tujunga-Shadow Hills-Lake View Terrace-East La Tuna Canyon Community Plan Area: Verdugo Hills Golf Course Project*. May 2009.
<http://planning.lacity.org/eir/verdugohillgolfcourse/deir/DEIR%20Verdugo%20Hills%20Golf%20Course.html> (accessed May 15, 2017).
- _____. 2011. *Burbank Boulevard Widening: Project Information Report*. 2011.
<https://engpermits.lacity.org/uprs/report/637.pdf> (accessed August 17, 2017).
- _____. 2012a. *Granada Hills-Knollwood & Sylmar Community Plans: Environmental Impact Report*. October 2012.
http://planning.lacity.org/EIR/GHills_Sylmar/DEIR/TOC_DraftEIR.htm (accessed May 15, 2017).
- _____. 2012b. *Sylmar Community Plan*. October 2012.
http://planning.lacity.org/cpu/Sylmar/Draft/Draft_CommunityPlan.pdf (accessed May 15, 2017).
- _____. 2014. *Notice of Preparation of an Environmental Impact Report and Public Scoping Meeting*. November 2014. <https://planning.lacity.org/eir/nops/ENV-2014-3225-EIR.pdf> (accessed May 15, 2017).
- _____. 2015a. *Recirculated Portions of Draft Environmental Impact Report, Sunland-Tujunga-Shadow Hills-Lake View Terrace-East La Tuna Canyon Community Plan Area: 6433 La Tuna Canyon Road Project*. December 2015.
http://planning.lacity.org/eir/verdugohillgolfcourse/deir_rp/RP_deir%206433%20la%20tuna%20canyon/RP_DEIR6433LaTunaCanyon.html (accessed May 15, 2017).
- _____. 2015b. *Sylmar Community Plan: Final Environmental Impact Report*. May 2015.
http://planning.lacity.org/eir/GHills_Sylmar/SylmarNewCommCoverPg.html (accessed May 15, 2017).
- _____. 2017. *General Plan Elements*. https://planning.lacity.org/GP_elements.html (accessed May 15, 2017).
- City of Palmdale. 1993a. *Palmdale General Plan*. January 1993.
https://www.cityofpalmdale.org/Portals/0/Documents/Business/Planning/General%20Plan/general_plan.pdf (accessed May 5, 2017).
- _____. 1993b. *Final Program Environmental Impact Report for the City of Palmdale General Plan*. February 1993.
<http://www.cityofpalmdale.org/Portals/0/Documents/Business/Planning/EIR/General%20Plan%20Final%20EIR.pdf> (accessed May 5, 2017).
- _____. 2007a. *Palmdale Transit Village Specific Plan*. April 2007.
<https://www.cityofpalmdale.org/Portals/0/Documents/Business/Planning/Palmdale%20Transit%20Village%20Specific%20Plan.pdf> (accessed May 5, 2017).
- _____. 2007b. *Palmdale Transit Village Specific Plan/General Plan Amendment and Zone Change: Environmental Impact Report*. June 2007.
<https://www.cityofpalmdale.org/Portals/0/Documents/Business/Planning/EIR/Palmdale%20Transit%20Village%20Specific%20Plan%20EIR.pdf> (accessed May 5, 2017).

- _____. 2010. *Antelope Valley Public Landfill CUP. Amendment to Draft Environmental Impact Report*. May 2010.
<https://www.cityofpalmdale.org/Portals/0/Documents/Business/Planning/EIR/AV%20Public%20Landfill%20Draft%20EIR%2005-2010.pdf> (accessed May 15, 2017).
- _____. 2011. *Antelope Valley Public Landfill CUP: Response to Comments/Final EIR*. March 2011.
<https://www.cityofpalmdale.org/Portals/0/Documents/Business/Planning/EIR/AV%20Public%20Landfill%20Final%20EIR%20Response%20To%20Comments%2003-2011.pdf> (accessed May 15, 2017).
- _____. 2012. *Housing Element Update Environmental Impact Report*. August 2012.
<https://www.cityofpalmdale.org/Portals/0/Documents/Business/Planning/EIR/Housing%20Element%20Update%20Final%20EIR%2008-2012.pdf> (accessed May 5, 2017).
- _____. 2014. *Palmdale Recycled Water Authority Recycled Water Facilities Plan: Initial Study/Mitigated Negative Declaration*. October 2014.
https://cityofpalmdale.org/Portals/0/Documents/Business/Planning/PRWA%20Initial%20Study-MND_102814.pdf (accessed May 5, 2017).
- _____. 2015. *Report to the Mayor and Members of the City Council from the City Manager: Approval of Funding Agreement with the Los Angeles County Metropolitan Transportation Authority*. December 2015.
http://palmdale.granicus.com/Viewer.php?view_id=2&clip_id=1642&meta_id=119465 (accessed May 5, 2017).
- _____. 2016a. *Notice of Intent to Adopt a Mitigated Negative Declaration*.
<https://www.cityofpalmdale.org/Portals/0/Documents/Meetings/Planning/2016-3-10/TTM%2073401%20-%20SPR%2015-004%20ENV.pdf?ver=2016-02-23-071453-227> (accessed March 29, 2018).
- _____. 2016b. *Palmdale Regional Groundwater Recharge and Recovery Project: Final Environmental Impact Report*. June 2016. https://www.palmdalewater.org/wp-content/uploads/2016/10/Palmdale_Final_EIR_061716.pdf (accessed May 5, 2017).
- _____. 2016c. *Proposed Mitigation Negative Declaration and Initial Study – Project No. Site Plan Review 16-003*. June 2016.
https://www.cityofpalmdale.org/Portals/0/Documents/Business/Planning/Grading_Project_Draft%20IS_MND_Public%20Review.pdf?ver=2016-07-05-133133-623 (accessed May 15, 2017).
- _____. 2016d. *Notice of Intent to Adopt a Mitigated Negative Declaration; Conditional Use Permit 16-011; Guidance Charter School*. August 2016.
<https://www.cityofpalmdale.org/Portals/0/Documents/Meetings/Planning/2016-9-8/CUP%2016-011%20Initial%20Study.pdf?ver=2016-08-08-165407-693> (accessed May 15, 2017).
- _____. 2016e. *Water System Master Plan: Final Report*. December 2016.
https://www.palmdalewater.org/wp-content/uploads/2017/01/2016_WSMP_Final_20161216_opt.pdf (accessed May 5, 2017).
- _____. 2016f. 2016 Ten-Year Capital Improvement Plan.
<http://www.cityofpalmdale.org/Portals/0/Documents/Public%20Works/2016CIP.pdf?ver=2016-05-19-173055-130> (accessed March 29, 2018)
- _____. 2017b. *Palmdale Multi-Modal High Speed Rail Station Area Plan Project*. 2017.
<http://www.cityofpalmdale.org/Projects/HSRSAP>. (accessed May 5, 2017).
- _____. 2017f. *City of Palmdale TOV Overlay Study*. 2017. <http://www.cityofpalmdale.org/TOD> (accessed May 5, 2017).

- _____. 2017e. *Palmdale TOD Framework Plan Environmental Impact Report*. Presentation. October 11, 2017. http://www.cityofpalmdale.org/Portals/0/Documents/TOD/EnvironmentalImpactReport/Palmdale%20TOD%20Framework%20Plan_Public%20Review%20Meeting_101117.pdf (accessed August 15, 2019).
- _____. 2018a. *2018 Ten-Year Capital Improvement Plan*. Palmdale. <https://www.cityofpalmdale.org/Portals/0/Documents/Public%20Works/2018%20FINAL%2010%20YR%20CIP%20-%20final.pdf> (accessed August 15, 2019).
- _____. 2018b. *SR-14, 10th Street West Widening/Interchange Project Initial Study-Mitigated Negative Declaration*. Palmdale. https://www.cityofpalmdale.org/Portals/0/Documents/Public%20Works/SR-14_10th%20Street%20West%20Interchange%20Widening%20Project_IS-MND_Feb2018_rev.pdf (accessed August 15, 2019).
- City of Santa Clarita. 2010a. *Draft Vista Canyon Specific Plan*. April 2010. <http://www.santa-clarita.com/city-hall/departments/community-development/planning/vista-canyon-specific-plan> (accessed September 6, 2017).
- _____. 2010b. *Draft Program EIR for the City of Santa Clarita's Proposed One Valley One Vision General Plan*. September 2010. <http://www.santa-clarita.com/city-hall/departments/community-development/planning/environmental-impact-reports-completed> (accessed May 15, 2017).
- _____. 2010c. *Draft Environmental Impact Report: Vista Canyon*. October 2010. <http://www.santa-clarita.com/city-hall/departments/community-development/planning/vista-canyon-specific-plan> (accessed September 6, 2017).
- _____. 2011a. *City of Santa Clarita General Plan*. June 2011. <http://www.codepublishing.com/CA/SantaClarita/html/SantaClaritaGP/SantaClaritaGP.html> (accessed May 15, 2017).
- _____. 2011b. *Mancara at Robinson Ranch Project: Draft Environmental Impact Report*. December 2011. <http://www.santa-clarita.com/city-hall/departments/community-development/planning/environmental-impact-reports-under-review/mancara-at-robinson-ranch> (accessed May 15, 2017).
- _____. 2011c. *Vista Canyon Mitigation Monitoring and Reporting Program (MMRP)*. April 2011. <http://filecenter.santa-clarita.com/Planning/VistaCanyon/MitigationMonitoringProgram.pdf> (accessed July 14, 2017).
- _____. 2011d. *Vista Canyon Final EIR*. February 2011. <http://www.santa-clarita.com/city-hall/departments/community-development/planning/environmental-impact-reports-under-review/vista-canyon-final-documents> (accessed September 5, 2017).
- _____. 2012. *Via Princessa East Extension Project: Draft Environmental Impact Report*. August 2012. <http://www.santa-clarita.com/city-hall/departments/community-development/planning/environmental-impact-reports-under-review/via-princessa-east-extension-project> (accessed September 6, 2017).
- _____. 2017a. *Lyons Avenue/Dockweiler Drive Extension Project: Draft Environmental Impact Report*. August 16, 2017. <http://www.santa-clarita.com/home/showdocument?id=15053> (accessed August 25, 2017).
- _____. 2017b. *Sand Canyon Plaza Mixed-Use Project Draft Environmental Impact Report*. March 2017. <http://filecenter.santa-clarita.com/Planning/SandCanyonPlaza/Sand%20Canyon%20DEIR%20-%20March%202017.pdf> (accessed May 7, 2018).

- Kennedy/Jenks. 2019. *Palmdale Regional Groundwater Recharge and Recovery Project*. <https://www.kennedyjenks.com/projects/palmdale-regional-groundwater/> (accessed August 15, 2019).
- Los Angeles World Airports. 2017. Final Environmental Assessment and Final General Conformity Determination. December 2017. <https://www.lawa.org/en/connectinglax/automated-people-mover/documents> (accessed April 24, 2018).
- County of Los Angeles. 2016. Department of Public Works. *Heller Circle, et al.* https://dpw.lacounty.gov/landing/ts/docs/Heller_Circle_et_al_FS.pdf (accessed June 2017).
- _____. 2009. *Castaic Bridge and Major Thoroughfare Construction Fee District Update Report*. June 2009. https://dpw.lacounty.gov/ldd/lib/fp/Road/B&T_District_Report_Castaic.pdf (accessed May 15, 2017).
- _____. 2010. *One Valley One Vision: Revised Draft Program Environmental Impact Report*. <http://planning.lacounty.gov/ovov> (accessed April 14, 2017).
- _____. 2014a. *Los Angeles County General Plan Update: Draft Environmental Impact Report*. June 2014. http://planning.lacounty.gov/assets/upl/project/gp_2035_deir.pdf (accessed April 14, 2017).
- _____. 2014b. *Antelope Valley Area Plan Draft Environmental Impact Report*. August 2014. <http://planning.lacounty.gov/tnc/environmental/> (accessed April 14, 2017).
- _____. 2017. Plans & Ordinances: Adopted Plans. Department of Regional Planning. <http://planning.lacounty.gov/plans/adopted> (accessed April 14, 2017).
- Dyett & Bhatia. 2017. Palmdale TOD Overlay Zone: Land Use Framework Plan. November 2015. <https://www.slideshare.net/peterdandb/tod-overlay-zone-land-use-framework-plan-112515> (accessed September 2017). Hahn, Hoon. 2017. City Engineer, City of La Cañada Flintridge. Telephone communication with Nicole Cuevas, Assistant Environmental Planner, Circlepoint. June 30, 2017.
- Hunter, Mark. 2017. Transportation Planning Analyst, City of Santa Clarita. Telephone and email communication with Nicole Cuevas, Assistant Environmental Planner, Circlepoint. July 6, 2017.
- Jonathan Yee. 2017. City Traffic Engineer, City of Burbank. Telephone communication with Nicole Cuevas, Assistant Environmental Planner, Circlepoint. June 26, 2017.
- Loekman, Michael. 2017. Project Manager, Los Angeles County Department of Public Works. Telephone communication with Nicole Cuevas, Assistant Environmental Planner, Circlepoint, July 6, 2017.
- Los Angeles Metropolitan District (LA Metro), 2016. *Northwest State Route 138 Corridor Improvement Project*. July 2016. https://media.metro.net/projects_studies/nw138/images/01_NW138_DraftEIR-EIS_CoverExecutiveSummary.pdf (accessed June 15, 2017).
- Mountains Recreation and Conservation Authority (MRCA). 2016. *Initial Study, Environmental Checklist, and Mitigated Negative Declaration for the Pacoima Wash Bikeway*. June 2016. <http://mrca.ca.gov/MND%20Pacoima%20Wash%20Bikeway.pdf> (accessed May 16, 2017).
- Ng, Chuen. Principal Planner, City of Lancaster, CA. Personal communication via email coordinating a *Development Summary Report* for City of Lancaster with Bronwyn Green, Rincon Consultants, Inc., April 6, 2016.
- Revive 25. 2017. *Creating a Better Road Ahead*. 2017. <http://www.abetterroadahead.com/index.php> (accessed September 18, 2017)

- Southern California Association of Governments (SCAG). 2016a. *2017 Federal Transportation Improvement Program (FTIP)*. September 2016.
<http://ftip.scag.ca.gov/Pages/2017/adopted.aspx> (accessed April 12, 2017).
- _____. 2016b. *2012-2035 Regional Transportation Plan/Sustainable Communities Strategy (RTP/SCS)*. April 2016. <http://scagrtpscs.net/Pages/FINAL2016RTPSCS.aspx> (accessed April 12, 2017)
- _____. 2018. *Final 2019 Federal Transportation Improvement Program*. August 2018.
<http://ftip.scag.ca.gov/Documents/F2019-FTIP-LocalLA.pdf> (accessed August 15, 2019)
- United States Forest Service (USFS). 2005. *Final Environmental Impact Statement, Volume 1. Land Management Plans: Angeles National Forest, Cleveland National Forest, Los Padres National Forest, San Bernardino National Forest*. September 2005.
https://www.fs.usda.gov/Internet/FSE_DOCUMENTS/stelprdb5166889.pdf (accessed April 14, 2017).
- _____. 2016. *San Gabriel Mountains National Monument Management Plan: Draft Environmental Assessment*. August 2016. <https://www.nationalforests.org/assets/pdfs/San-Gabriel-Mtns-Ntl-Monument-Mgmt-Plan-and-Draft-EA-8-2016.pdf> (accessed April 14, 2017).
- _____. 2017. *Angeles National Forest – Planning*.
<https://www.fs.usda.gov/main/angeles/landmanagement/planning> (accessed May 5, 2017).
- Vosicka, Charles. 2017. Project Manager, Los Angeles County Department of Public Works. Telephone and email communication with Nicole Cuevas, Assistant Environmental Planner, Circlepoint. July 2017.