

California High-Speed Rail Authority

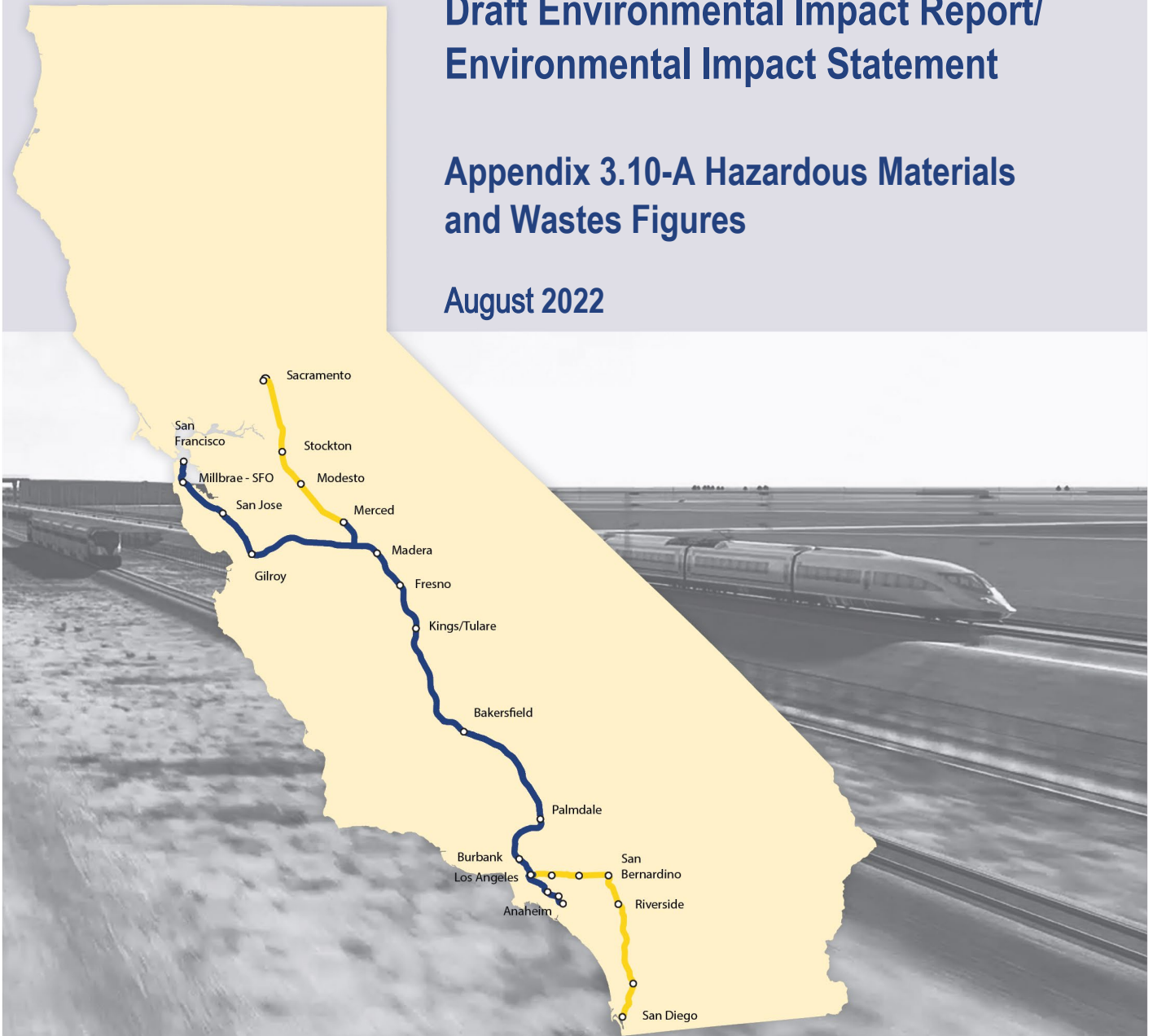
Palmdale to Burbank

Project Section

Draft Environmental Impact Report/
Environmental Impact Statement

Appendix 3.10-A Hazardous Materials
and Wastes Figures

August 2022



The environmental review, consultation, and other actions required by applicable federal environmental laws for this project are being or have been carried out by the State of California pursuant to 23 U.S.C. 327 and a Memorandum of Understanding dated July 23, 2019, and executed by the Federal Railroad Administration and the State of California.

This page intentionally left blank

TABLE OF CONTENTS

Figures

Figure 3.10-A-1 Potential Environmental Concerns, Landfills, Educational Facilities, and Oil/Gas Wells within Refined SR14 Build Alternative Resource Study Area (Map 1 of 3).....	1
Figure 3.10-A-2 Potential Environmental Concerns, Landfills, Educational Facilities, and Oil/Gas Wells within Refined SR14 Build Alternative Resource Study Area (Map 2 of 3).....	2
Figure 3.10-A-3 Potential Environmental Concerns, Landfills, Educational Facilities, and Oil/Gas Wells within Refined SR14 Build Alternative Resource Study Area (Map 3 of 3).....	3
Figure 3.10-A-4 Potential Environmental Concerns, Landfills, Educational Facilities, and Oil/Gas Wells within the SR14A Build Alternative Resource Study Area (Map 1 of 3).....	4
Figure 3.10-A-5 Potential Environmental Concerns, Landfills, Educational Facilities, and Oil/Gas Wells within the SR14A Build Alternative Resource Study Area (Map 2 of 3).....	5
Figure 3.10-A-6 Potential Environmental Concerns, Landfills, Educational Facilities, and Oil/Gas Wells within the SR14A Build Alternative Resource Study Area (Map 3 of 3).....	6
Figure 3.10-A-7 Potential Environmental Concerns, Landfills, Educational Facilities, and Oil/Gas Wells within E1 Build Alternative Resource Study Area (Map 1 of 3)	7
Figure 3.10-A-8 Potential Environmental Concerns, Landfills, Educational Facilities, and Oil/Gas Wells within E1 Build Alternative Resource Study Area (Map 2 of 3)	8
Figure 3.10-A-9 Potential Environmental Concerns, Landfills, Educational Facilities, and Oil/Gas Wells within E1 Build Alternative Resource Study Area (Map 3 of 3)	9
Figure 3.10-A-10 Potential Environmental Concerns, Landfills, Educational Facilities, and Oil/Gas Wells within the E1A Build Alternative RSA (Map 1 of 3).....	10
Figure 3.10-A-11 Potential Environmental Concerns, Landfills, Educational Facilities, and Oil/Gas Wells within the E1A Build Alternative RSA (Map 2 of 3).....	11
Figure 3.10-A-12 Potential Environmental Concerns, Landfills, Educational Facilities, and Oil/Gas Wells within the E1A Build Alternative RSA (Map 3 of 3).....	12
Figure 3.10-A-13 Potential Environmental Concerns, Landfills, Educational Facilities, and Oil/Gas Wells within the E2 Build Alternative RSA (Map 1 of 3).....	13

Figure 3.10-A-14 Potential Environmental Concerns, Landfills, Educational Facilities, and Oil/Gas Wells within the E2 Build Alternative RSA (Map 2 of 3)..... 14

Figure 3.10-A-15 Potential Environmental Concerns, Landfills, Educational Facilities, and Oil/Gas Wells within the E2 Build Alternative RSA (Map 3 of 3)..... 15

Figure 3.10-A-16 Potential Environmental Concerns, Landfills, Educational Facilities, and Oil/Gas Wells within the E2A Build Alternative RSA (Map 1 of 3) 16

Figure 3.10-A-17 Potential Environmental Concerns, Landfills, Educational Facilities, and Oil/Gas Wells within the E2A Build Alternative RSA (Map 2 of 3) 17

Figure 3.10-A-18 Potential Environmental Concerns, Landfills, Educational Facilities, and Oil/Gas Wells within the E2A Build Alternative RSA (Map 3 of 3) 18

Figure 3.10-A-19 San Fernando Valley Superfund Site..... 19

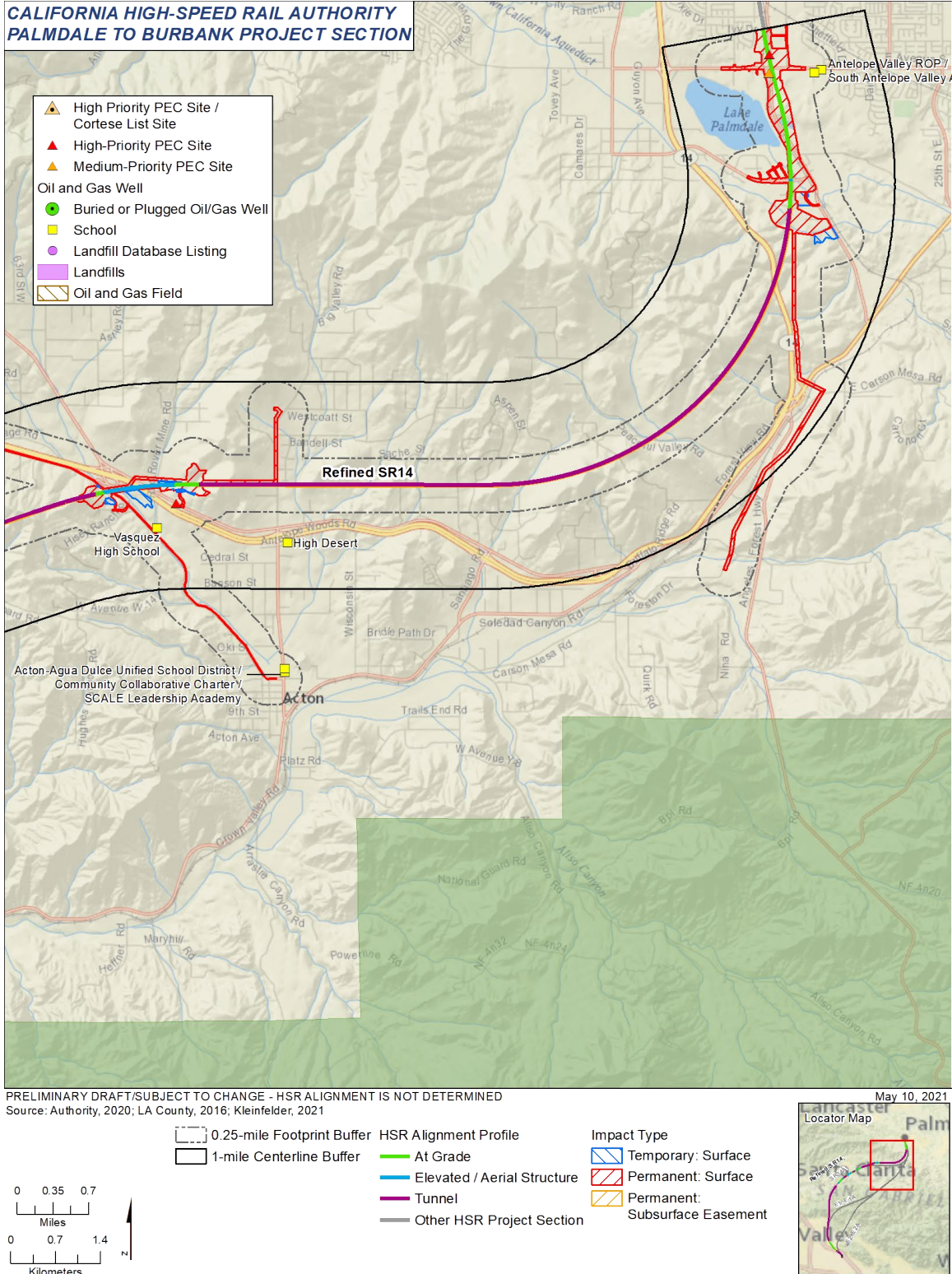


Figure 3.10-A-1 Potential Environmental Concerns, Landfills, Educational Facilities, and Oil/Gas Wells within Refined SR14 Build Alternative Resource Study Area (Map 1 of 3)

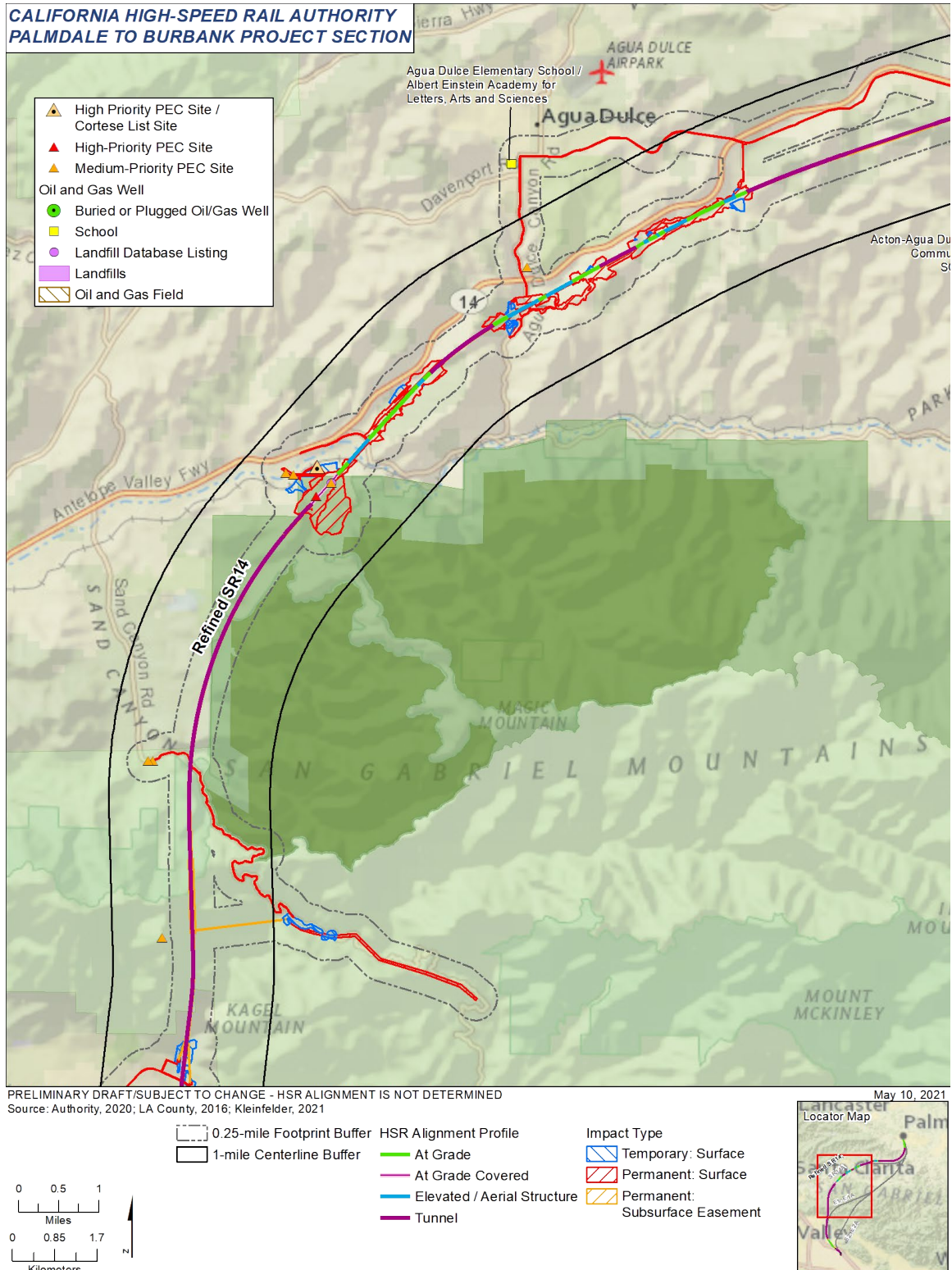


Figure 3.10-A-2 Potential Environmental Concerns, Landfills, Educational Facilities, and Oil/Gas Wells within Refined SR14 Build Alternative Resource Study Area (Map 2 of 3)

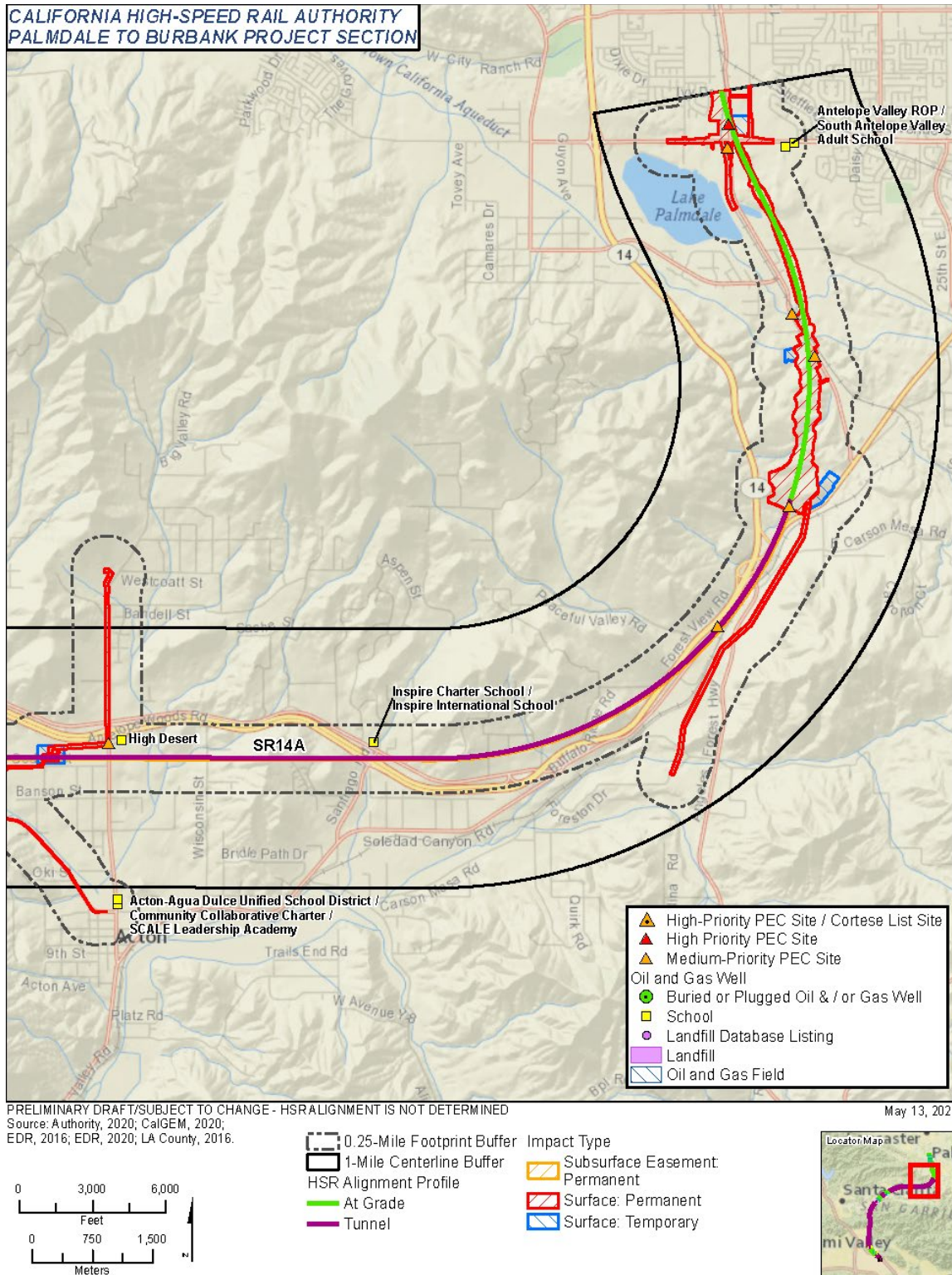


Figure 3.10-A-4 Potential Environmental Concerns, Landfills, Educational Facilities, and Oil/Gas Wells within the SR14A Build Alternative Resource Study Area (Map 1 of 3)

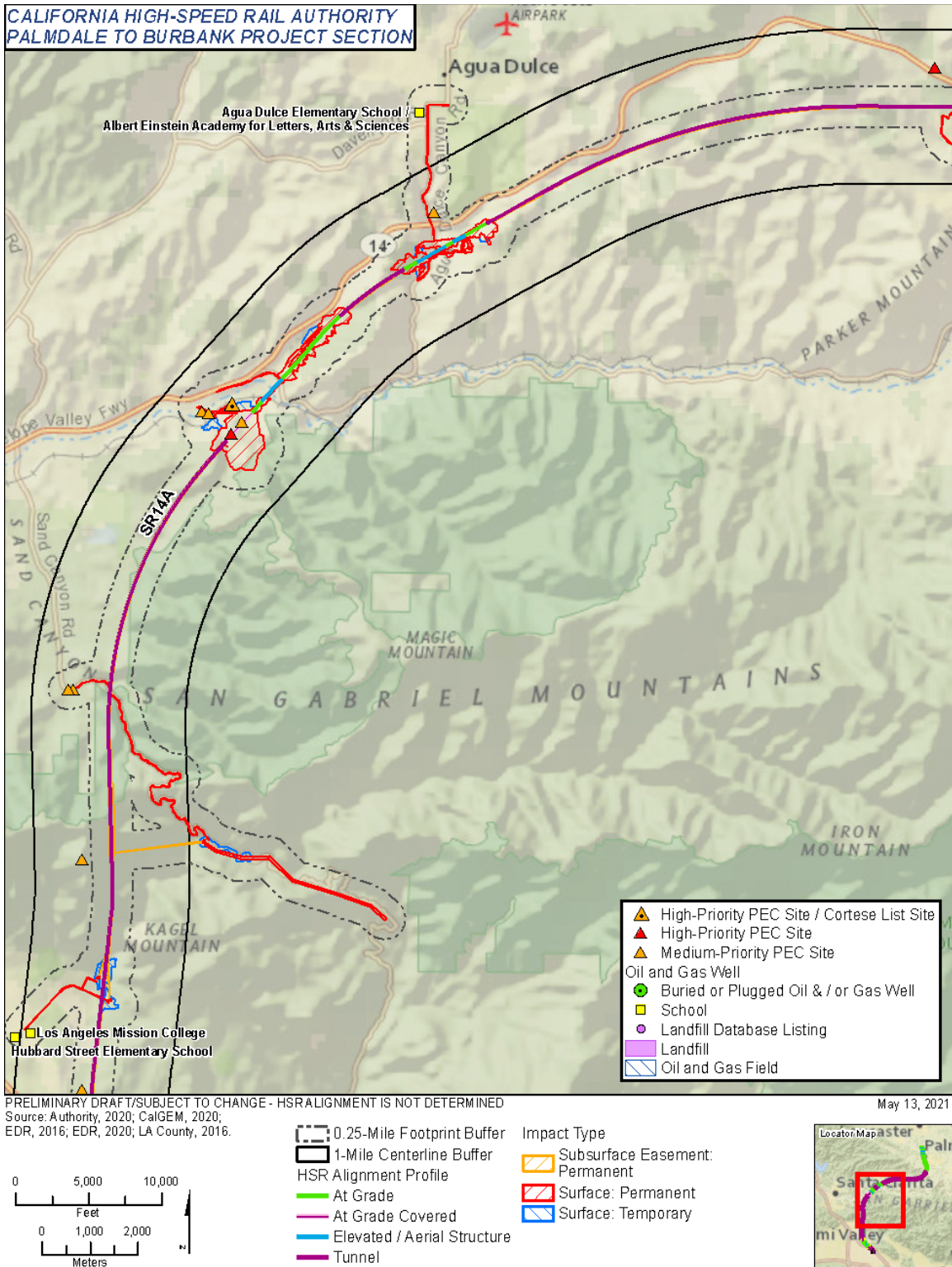


Figure 3.10-A-5 Potential Environmental Concerns, Landfills, Educational Facilities, and Oil/Gas Wells within the SR14A Build Alternative Resource Study Area (Map 2 of 3)

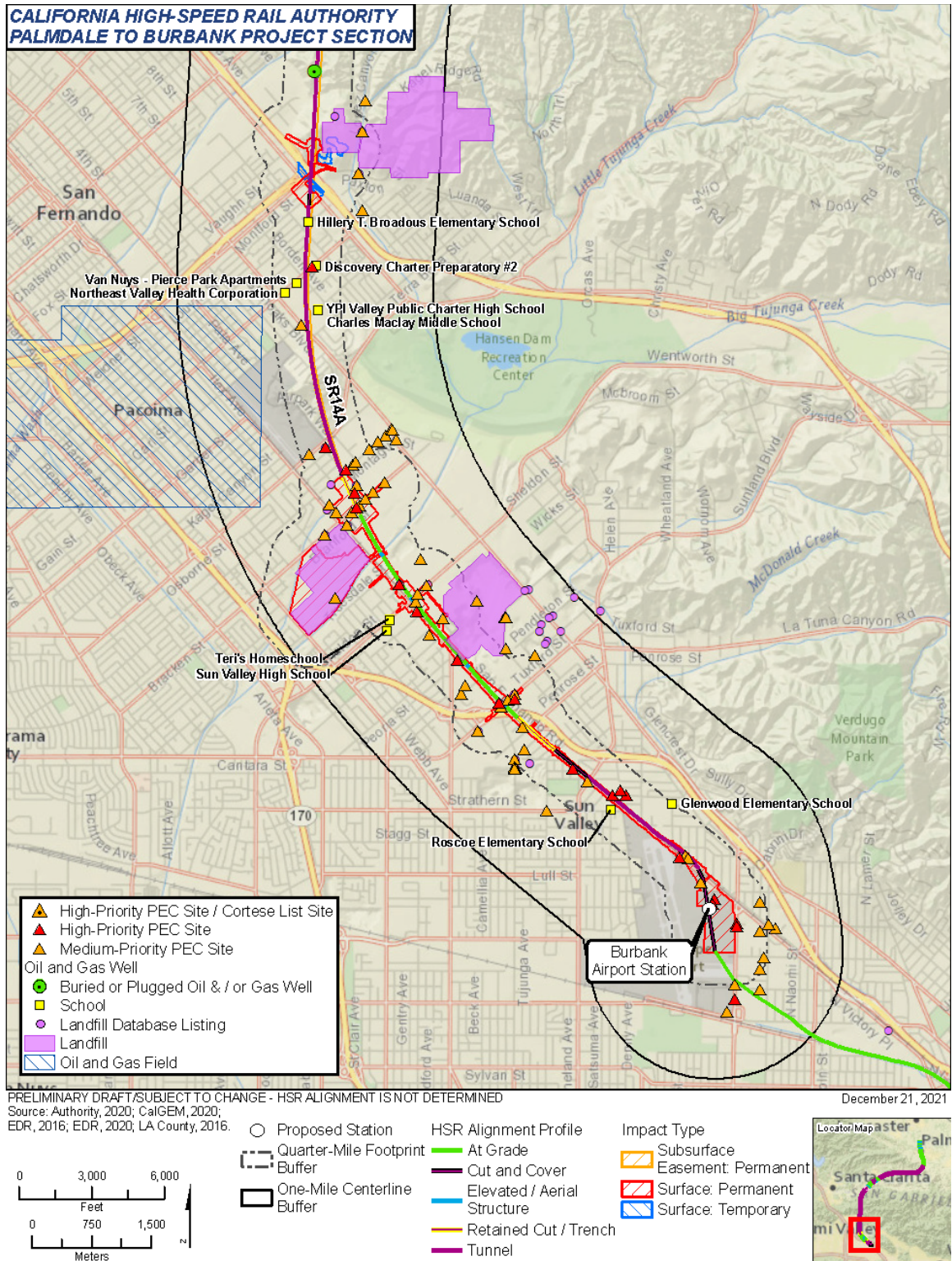


Figure 3.10-A-6 Potential Environmental Concerns, Landfills, Educational Facilities, and Oil/Gas Wells within the SR14A Build Alternative Resource Study Area (Map 3 of 3)

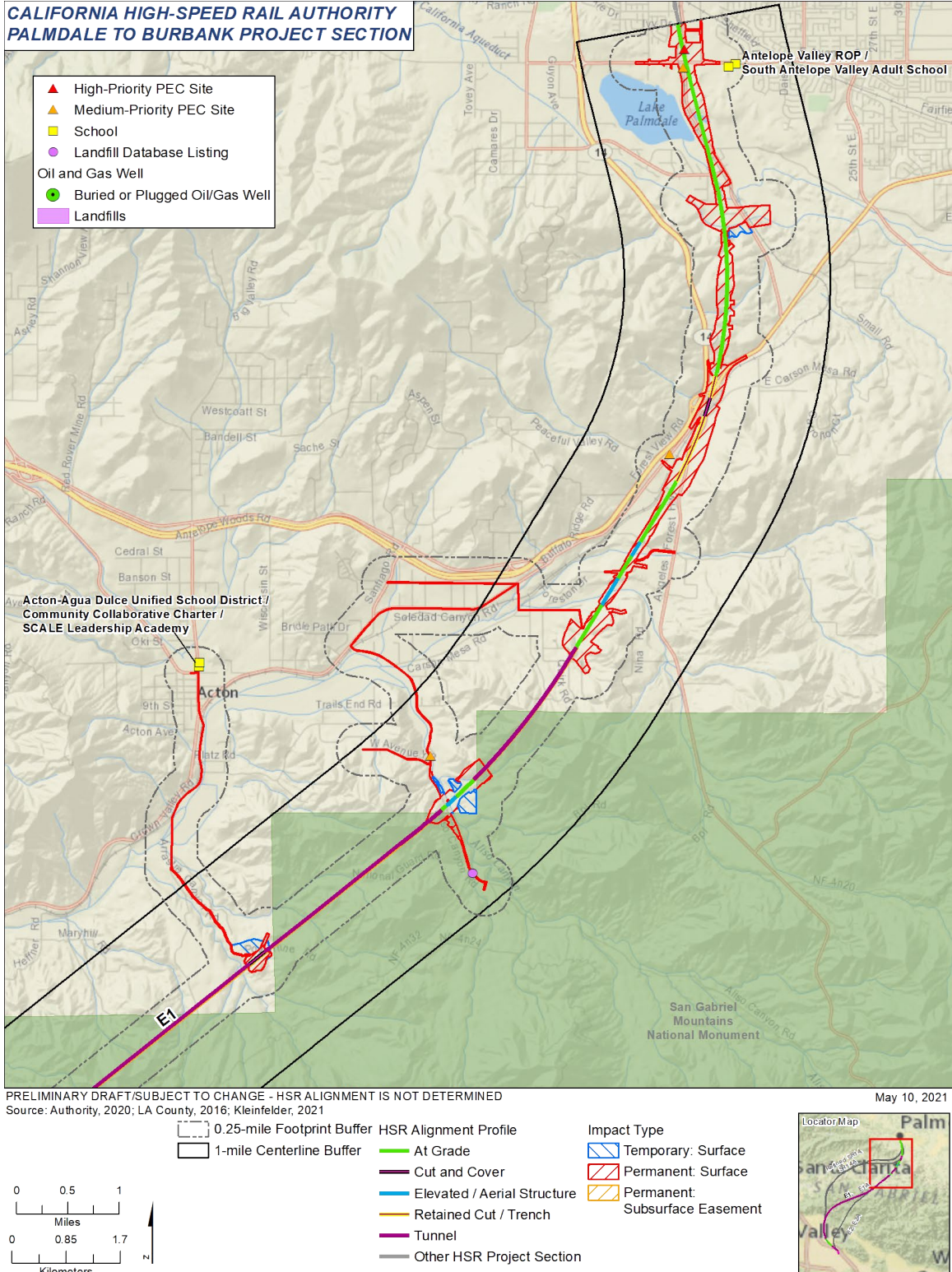


Figure 3.10-A-7 Potential Environmental Concerns, Landfills, Educational Facilities, and Oil/Gas Wells within E1 Build Alternative Resource Study Area (Map 1 of 3)

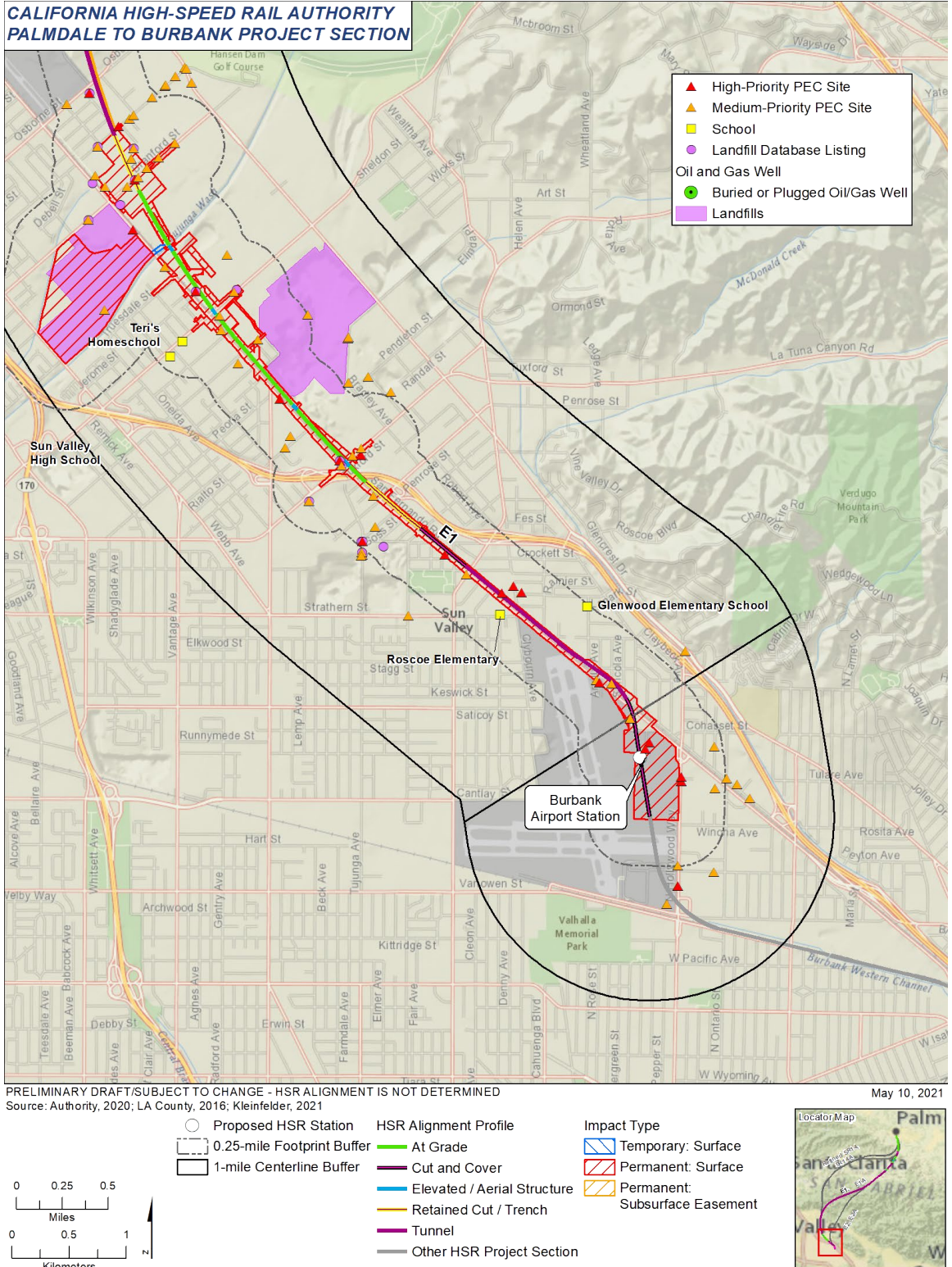


Figure 3.10-A-9 Potential Environmental Concerns, Landfills, Educational Facilities, and Oil/Gas Wells within E1 Build Alternative Resource Study Area (Map 3 of 3)

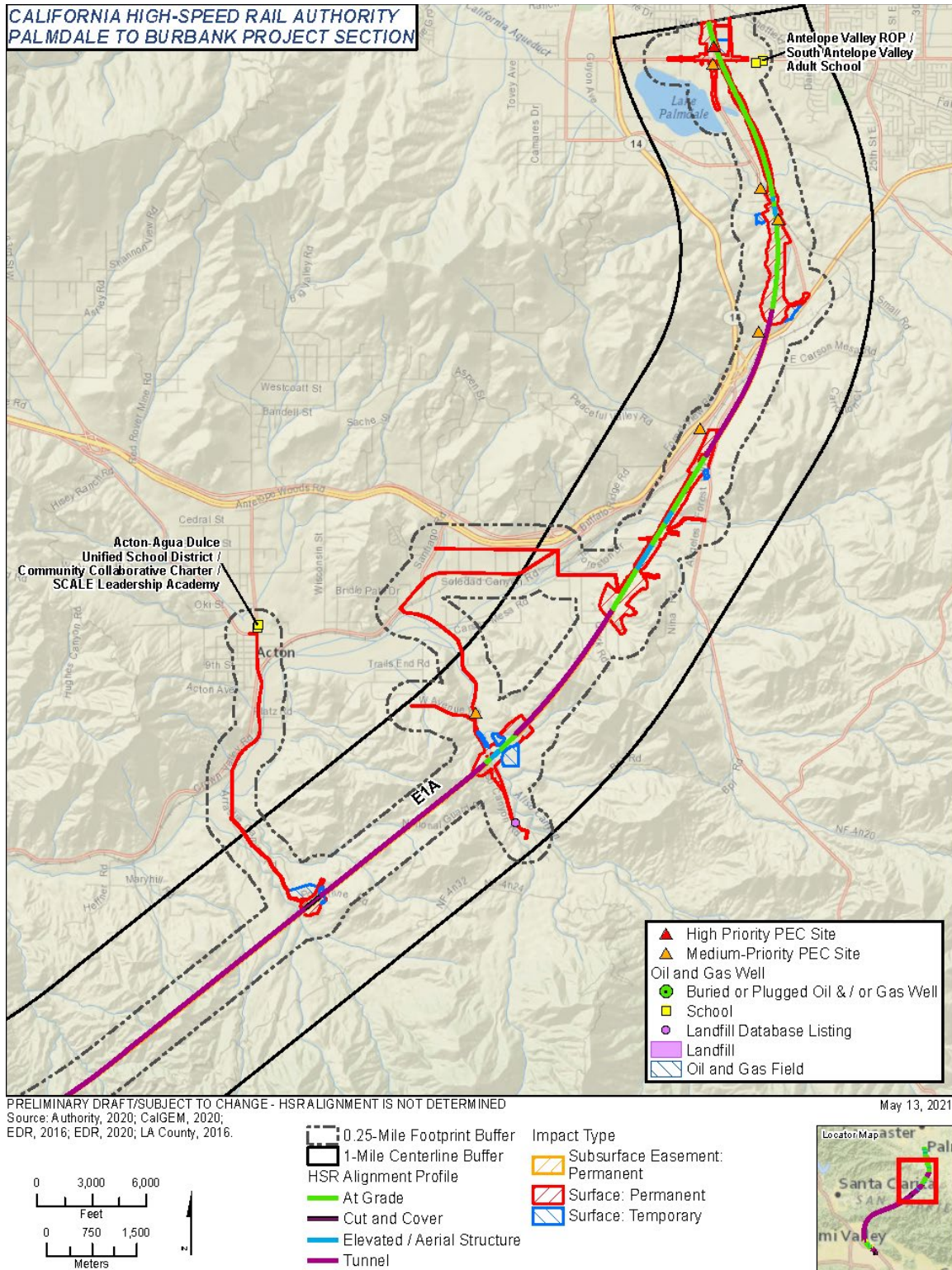


Figure 3.10-A-10 Potential Environmental Concerns, Landfills, Educational Facilities, and Oil/Gas Wells within the E1A Build Alternative RSA (Map 1 of 3)

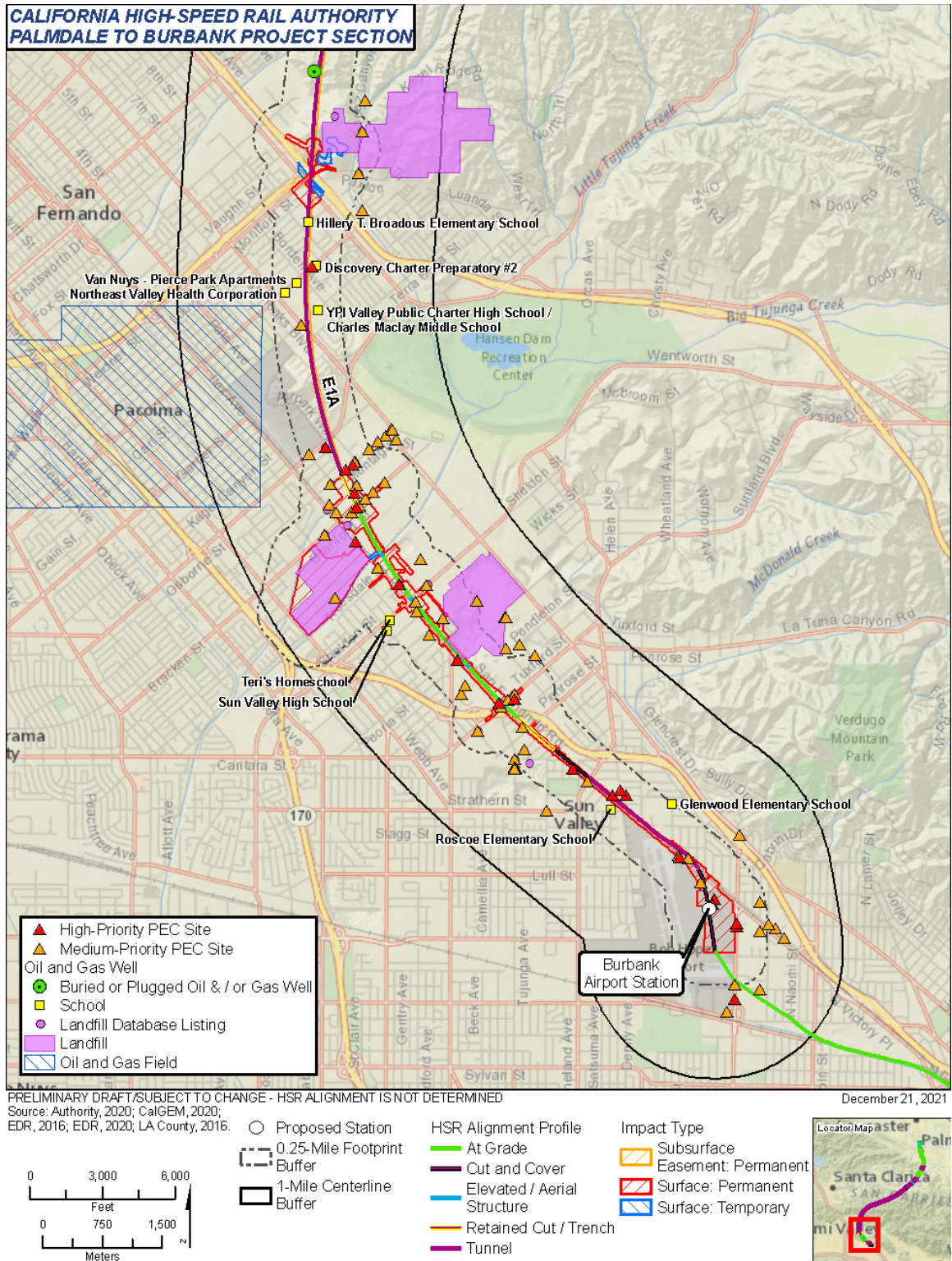


Figure 3.10-A-12 Potential Environmental Concerns, Landfills, Educational Facilities, and Oil/Gas Wells within the E1A Build Alternative RSA (Map 3 of 3)

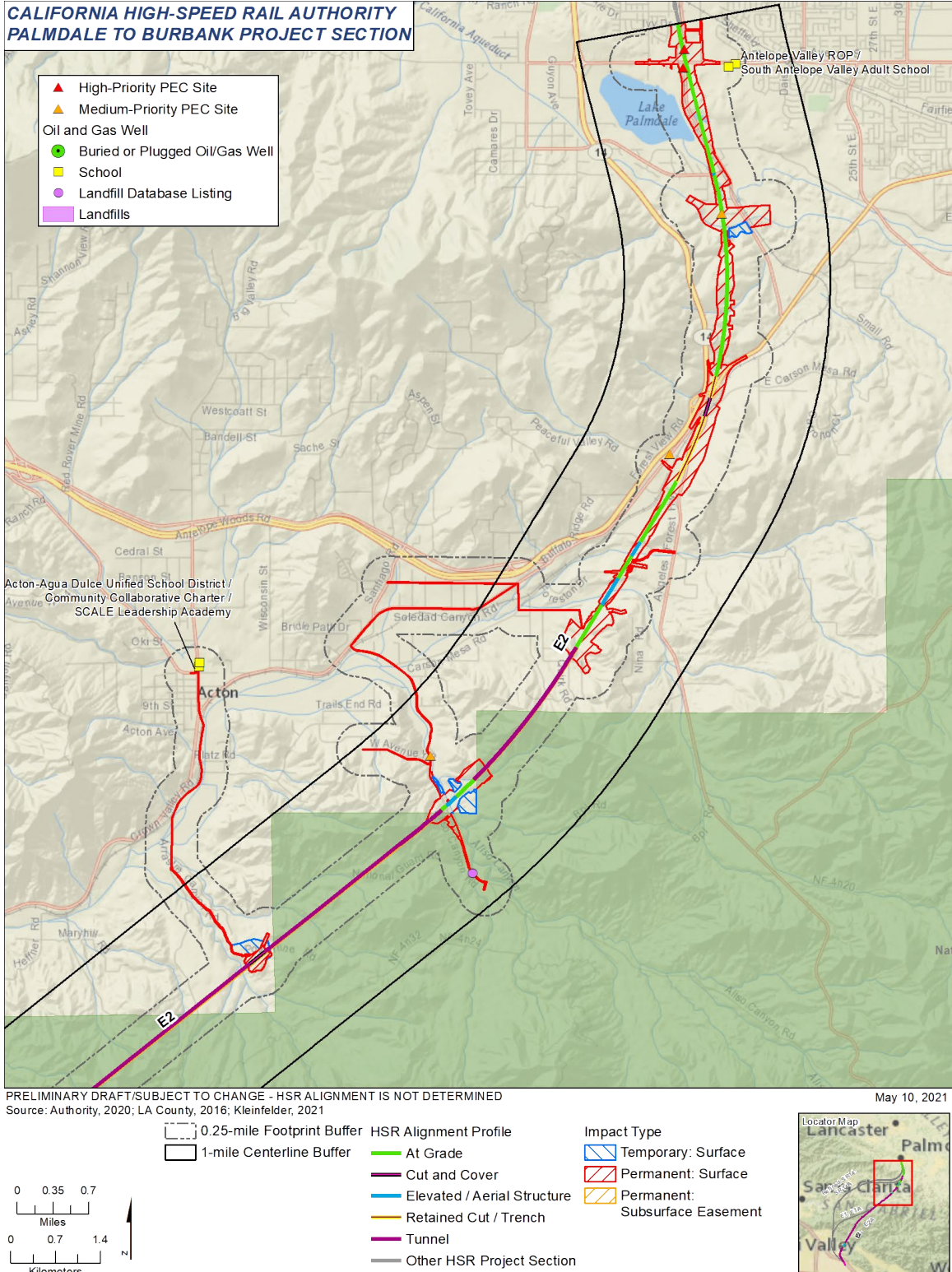
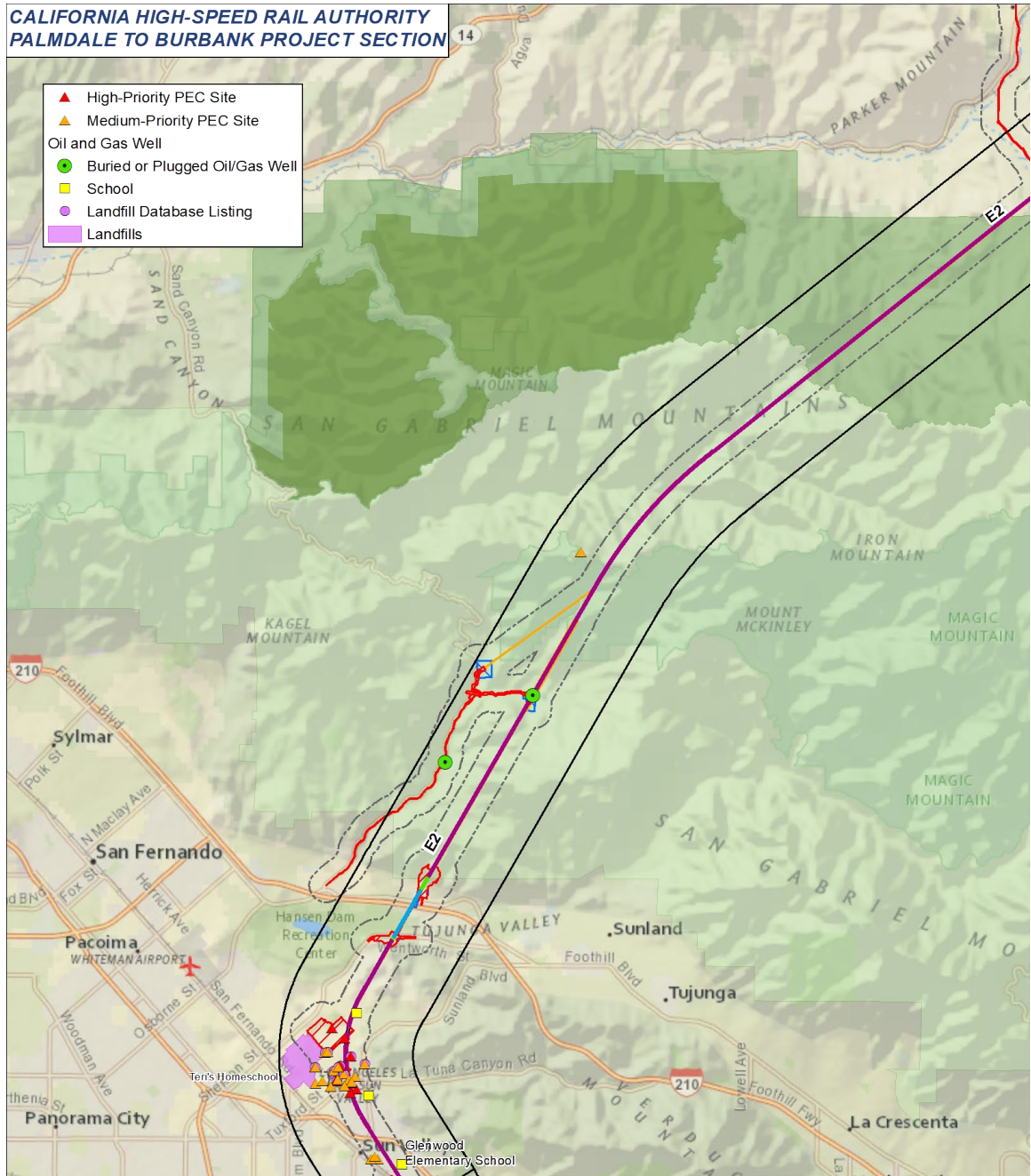


Figure 3.10-A-13 Potential Environmental Concerns, Landfills, Educational Facilities, and Oil/Gas Wells within the E2 Build Alternative RSA (Map 1 of 3)



PRELIMINARY DRAFT/SUBJECT TO CHANGE - HSR ALIGNMENT IS NOT DETERMINED
 Source: Authority, 2020; LA County, 2016; Kleinfelder, 2021
 May 10, 2021

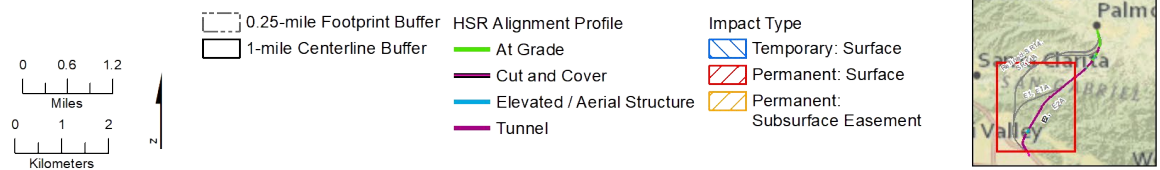


Figure 3.10-A-14 Potential Environmental Concerns, Landfills, Educational Facilities, and Oil/Gas Wells within the E2 Build Alternative RSA (Map 2 of 3)

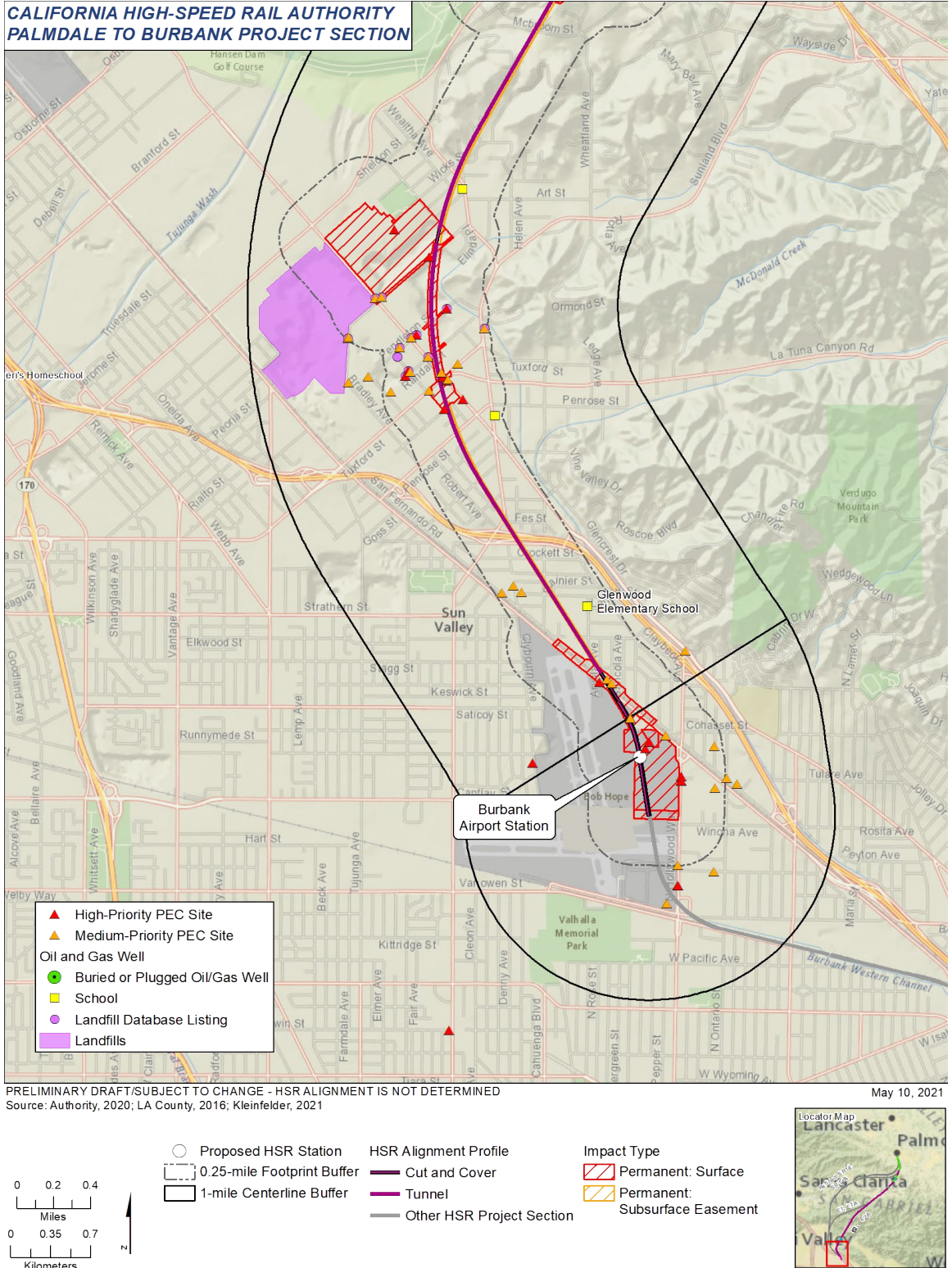


Figure 3.10-A-15 Potential Environmental Concerns, Landfills, Educational Facilities, and Oil/Gas Wells within the E2 Build Alternative RSA (Map 3 of 3)

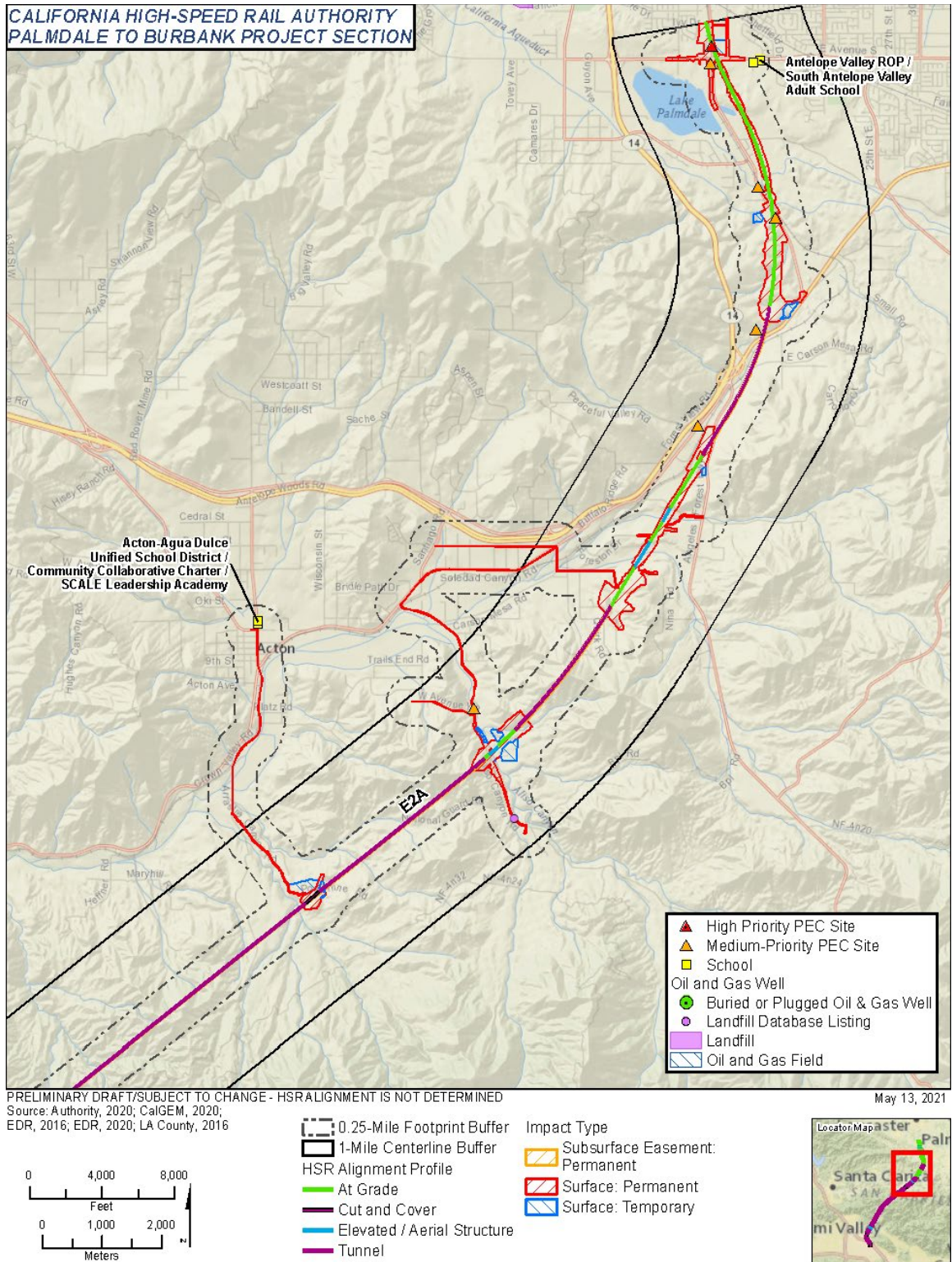


Figure 3.10-A-16 Potential Environmental Concerns, Landfills, Educational Facilities, and Oil/Gas Wells within the E2A Build Alternative RSA (Map 1 of 3)

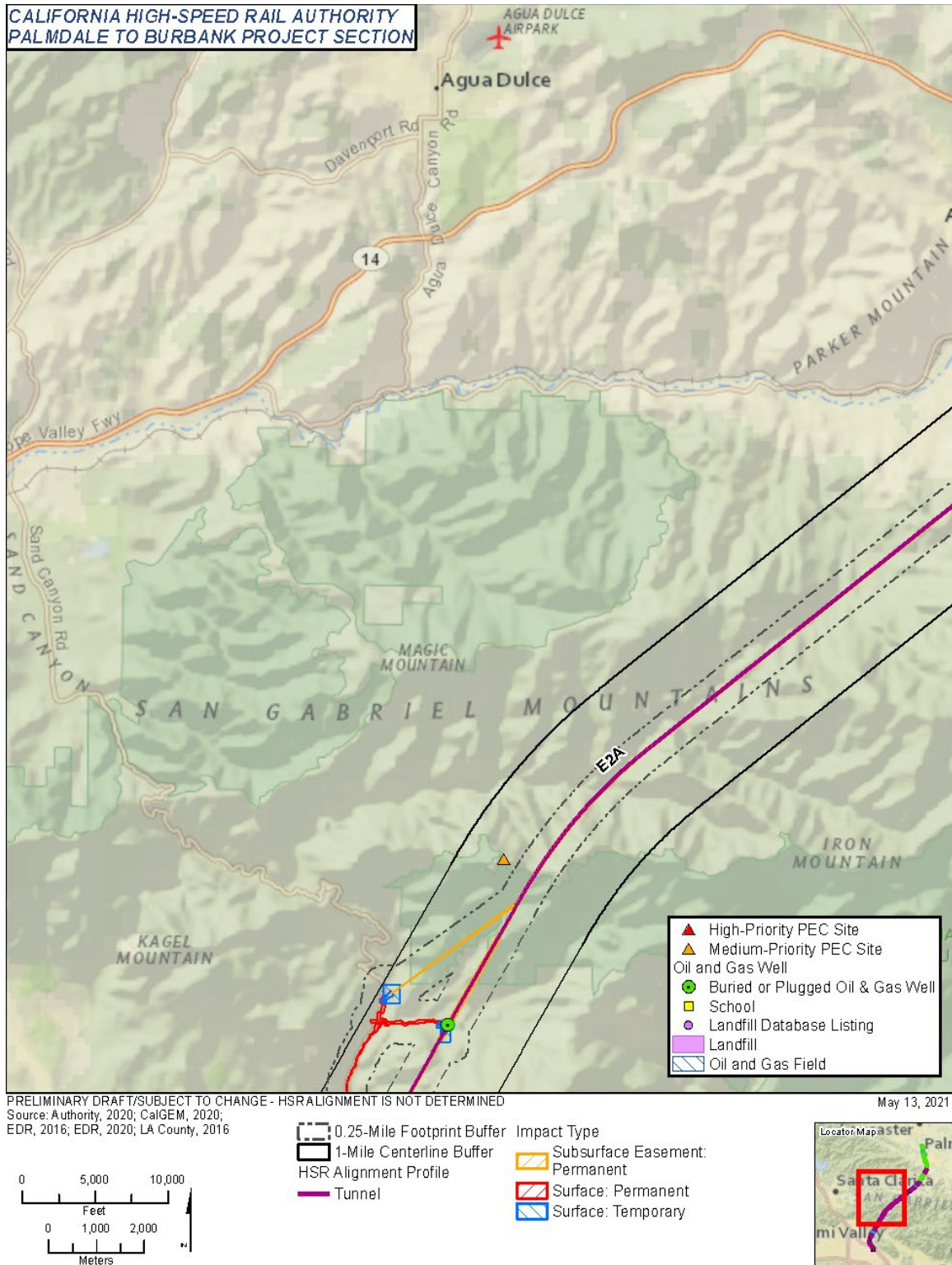


Figure 3.10-A-17 Potential Environmental Concerns, Landfills, Educational Facilities, and Oil/Gas Wells within the E2A Build Alternative RSA (Map 2 of 3)

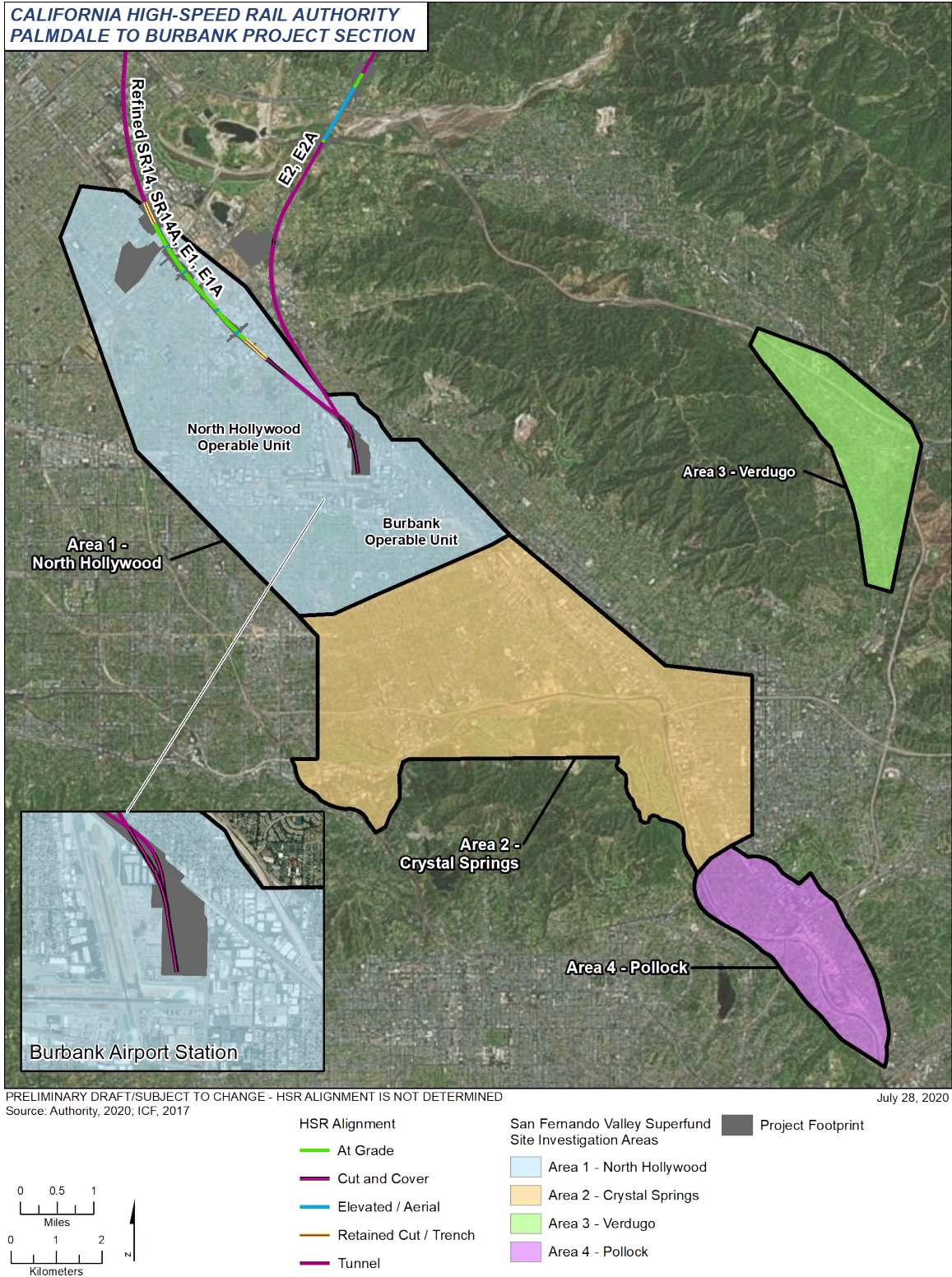


Figure 3.10-A-19 San Fernando Valley Superfund Site

This page intentionally left blank