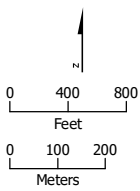


## **APPENDIX 3.1-A: PARCELS WITHIN THE HSR PROJECT FOOTPRINT (Alternative 4, Part 1)**



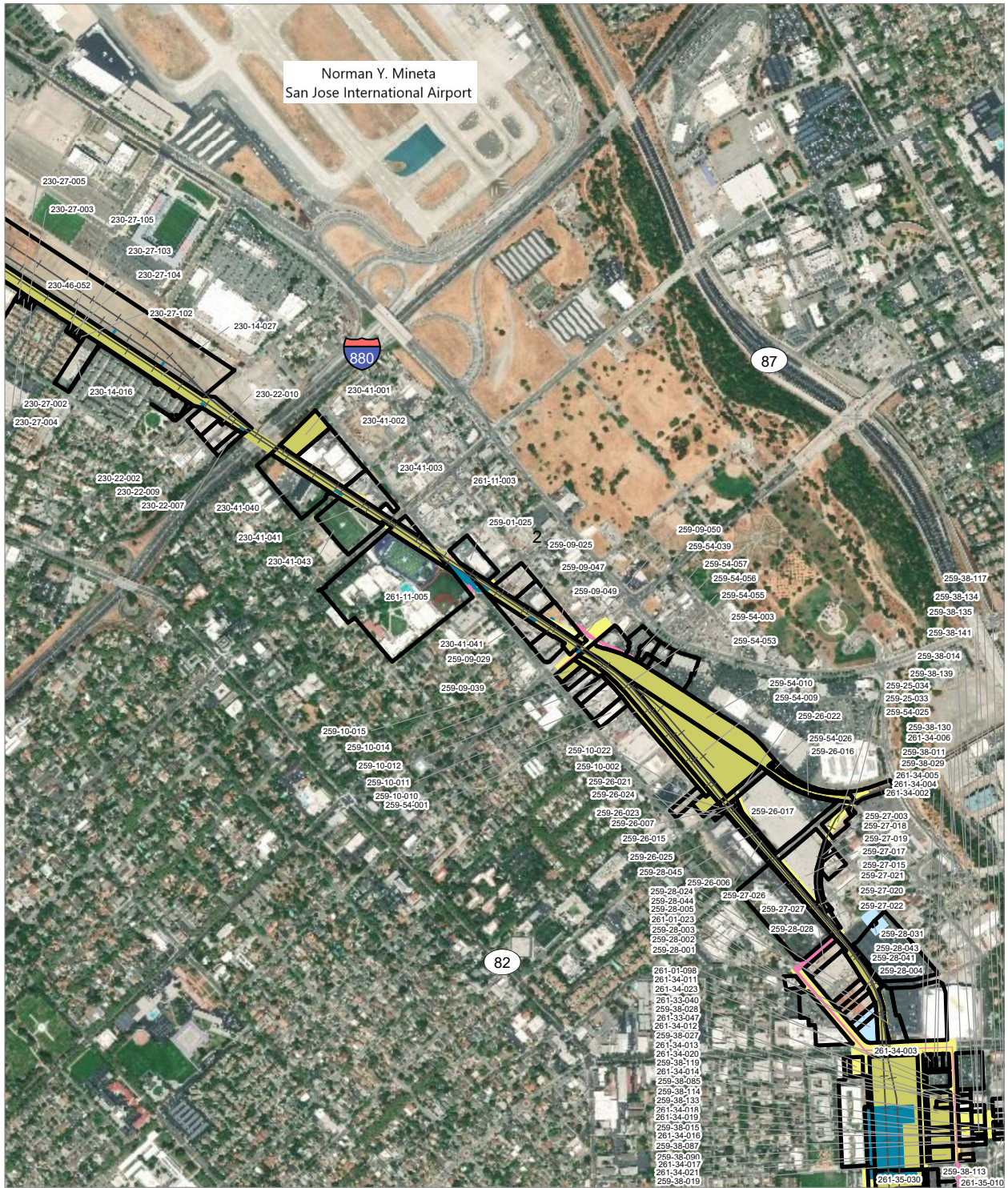
PRELIMINARY DRAFT/SUBJECT TO CHANGE - HSR ALIGNMENT IS NOT DETERMINED  
 SOURCE: ESRI, 2019; Santa Clara County, 2016; San Mateo County, 2016, San Francisco County, 2016



- HSR Right-of-Way
- Temporary Construction Easement
- Parcel (APN Displayed)
- HSR Permanent Easement

**Alternative 4**



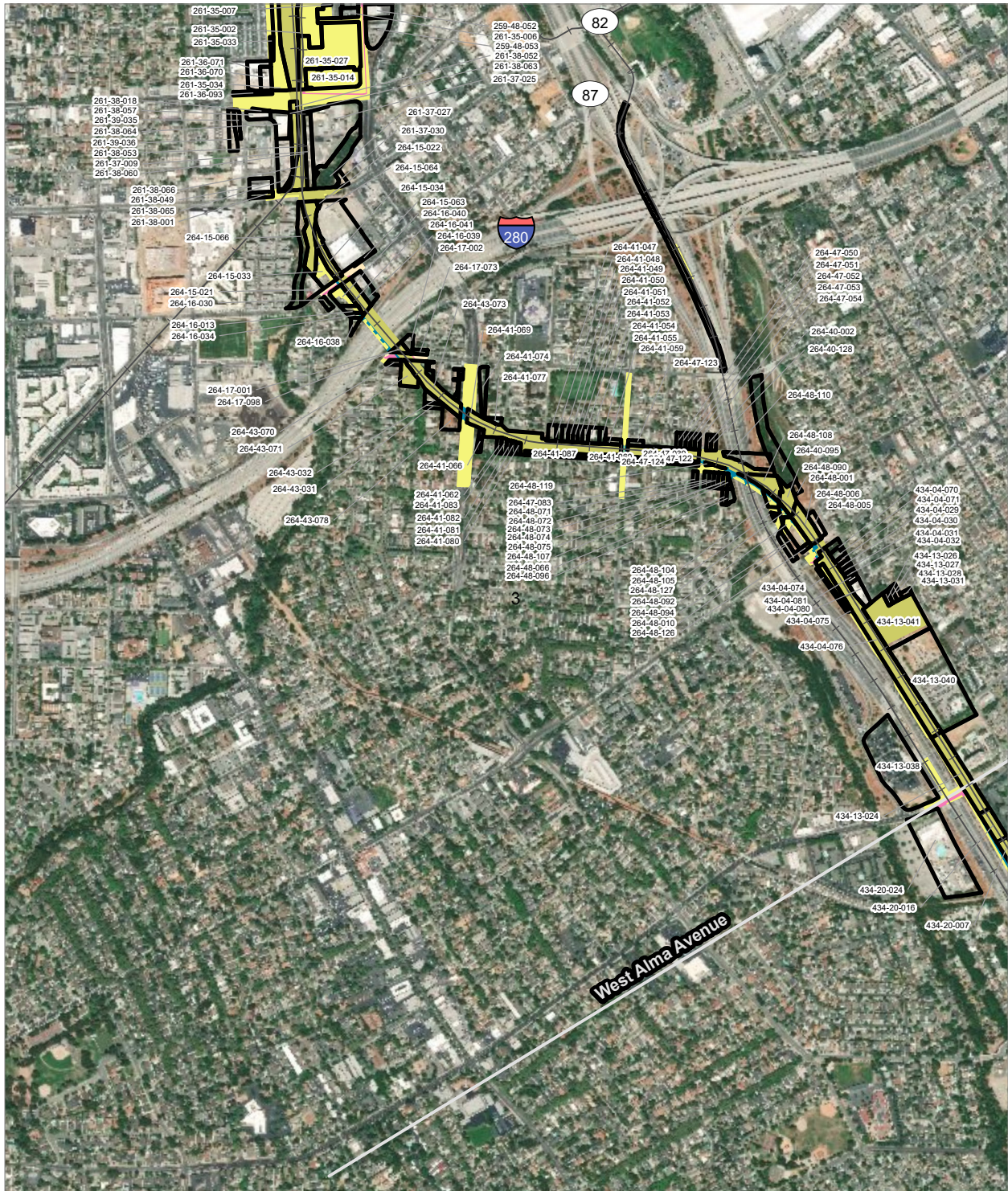


PRELIMINARY DRAFT/SUBJECT TO CHANGE - HSR ALIGNMENT IS NOT DETERMINED  
 SOURCE: ESRI, 2019; Santa Clara County, 2016; San Mateo County, 2016, San Francisco County, 2016

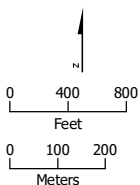
- HSR Right-of-Way
- Other Right-of-Way
- Roadway Right-of-Way
- Rail Right-of-Way
- HSR Permanent Easement
- Permanent Utility Easement
- Temporary Construction Easement
- Temporary Utility Easement
- Parcel (APN Displayed)

**Alternative 4**





PRELIMINARY DRAFT/SUBJECT TO CHANGE - HSR ALIGNMENT IS NOT DETERMINED  
 SOURCE: ESRI, 2019; Santa Clara County, 2016; San Mateo County, 2016; San Francisco County, 2016



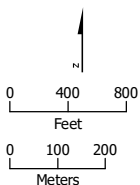
- HSR Right-of-Way
- Roadway Right-of-Way
- HSR Permanent Easement
- Permanent Utility Easement
- Temporary Construction Easement
- Parcel (APN Displayed)

**Alternative 4**





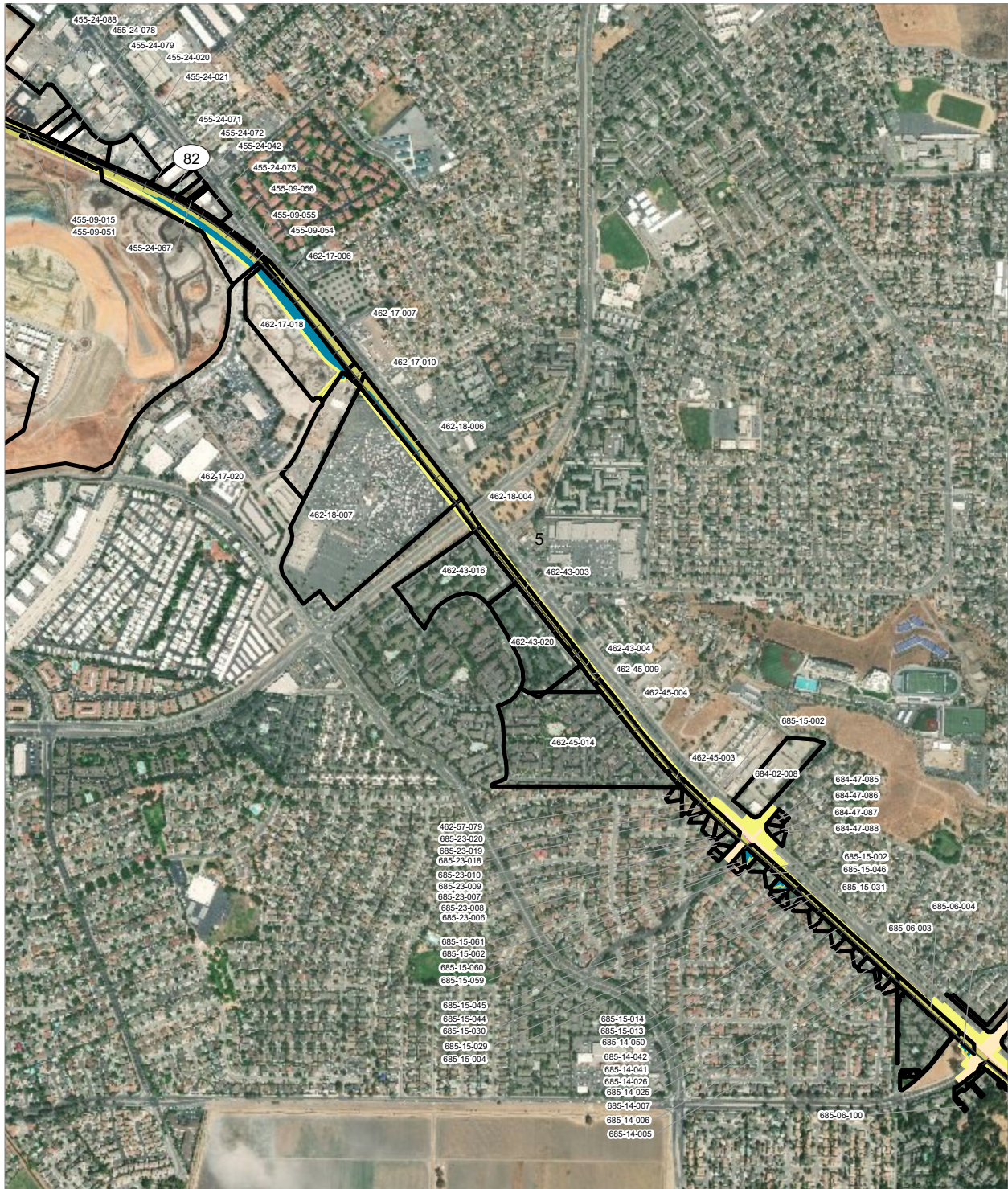
PRELIMINARY DRAFT/SUBJECT TO CHANGE - HSR ALIGNMENT IS NOT DETERMINED  
 SOURCE: ESRI, 2019; Santa Clara County, 2016; San Mateo County, 2016, San Francisco County, 2016



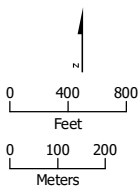
- HSR Right-of-Way
- Roadway Right-of-Way
- HSR Permanent Easement
- Permanent Utility Easement
- Temporary Construction Easement
- Temporary Utility Easement
- Parcel (APN Displayed)

**Alternative 4**





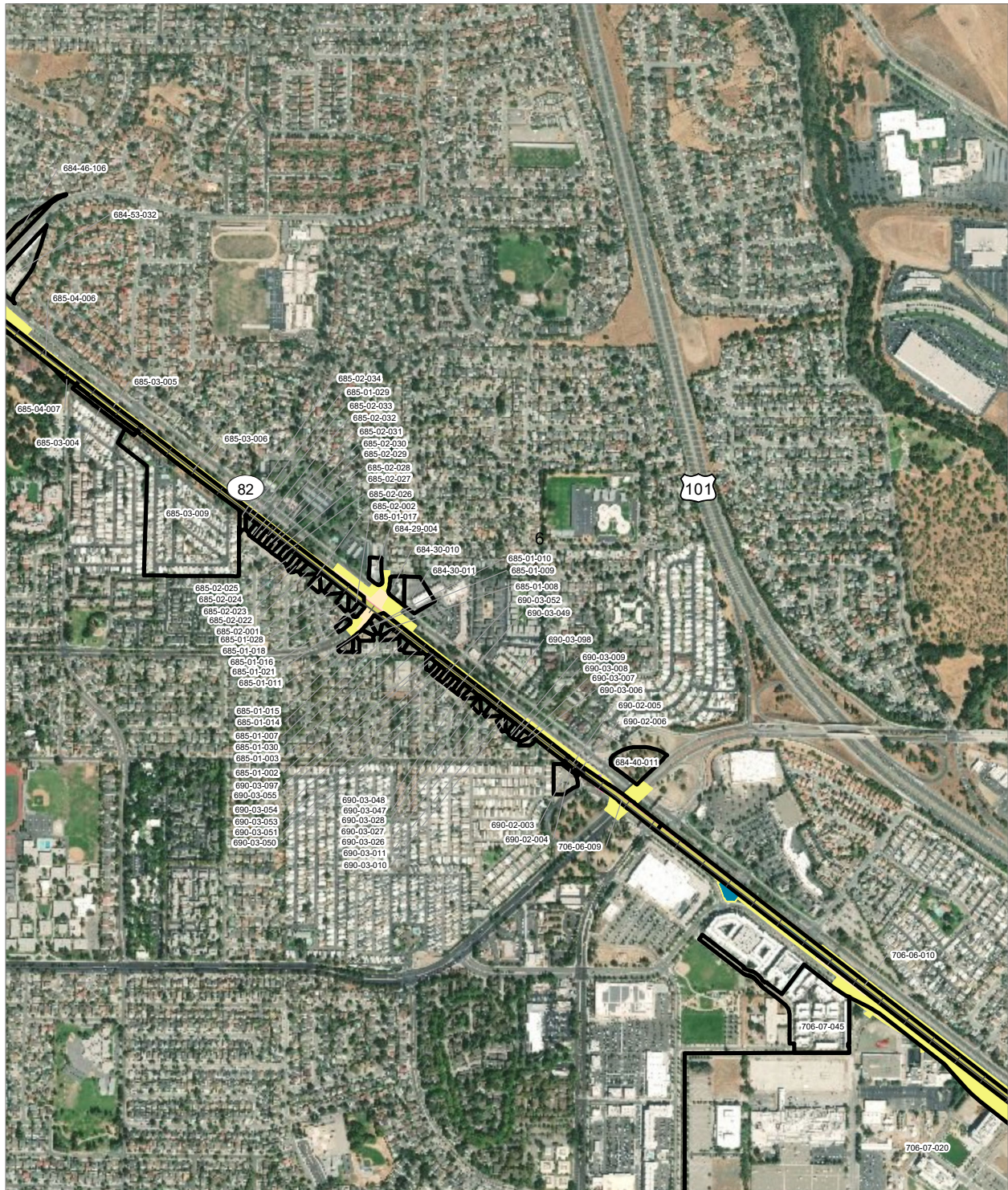
PRELIMINARY DRAFT/SUBJECT TO CHANGE - HSR ALIGNMENT IS NOT DETERMINED  
 SOURCE: ESRI, 2019; Santa Clara County, 2016; San Mateo County, 2016; San Francisco County, 2016



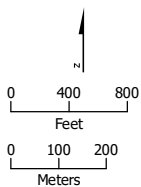
- HSR Right-of-Way
- Roadway Right-of-Way
- HSR Permanent Easement
- Permanent Utility Easement
- Temporary Construction Easement
- Temporary Utility Easement
- Parcel (APN Displayed)

**Alternative 4**





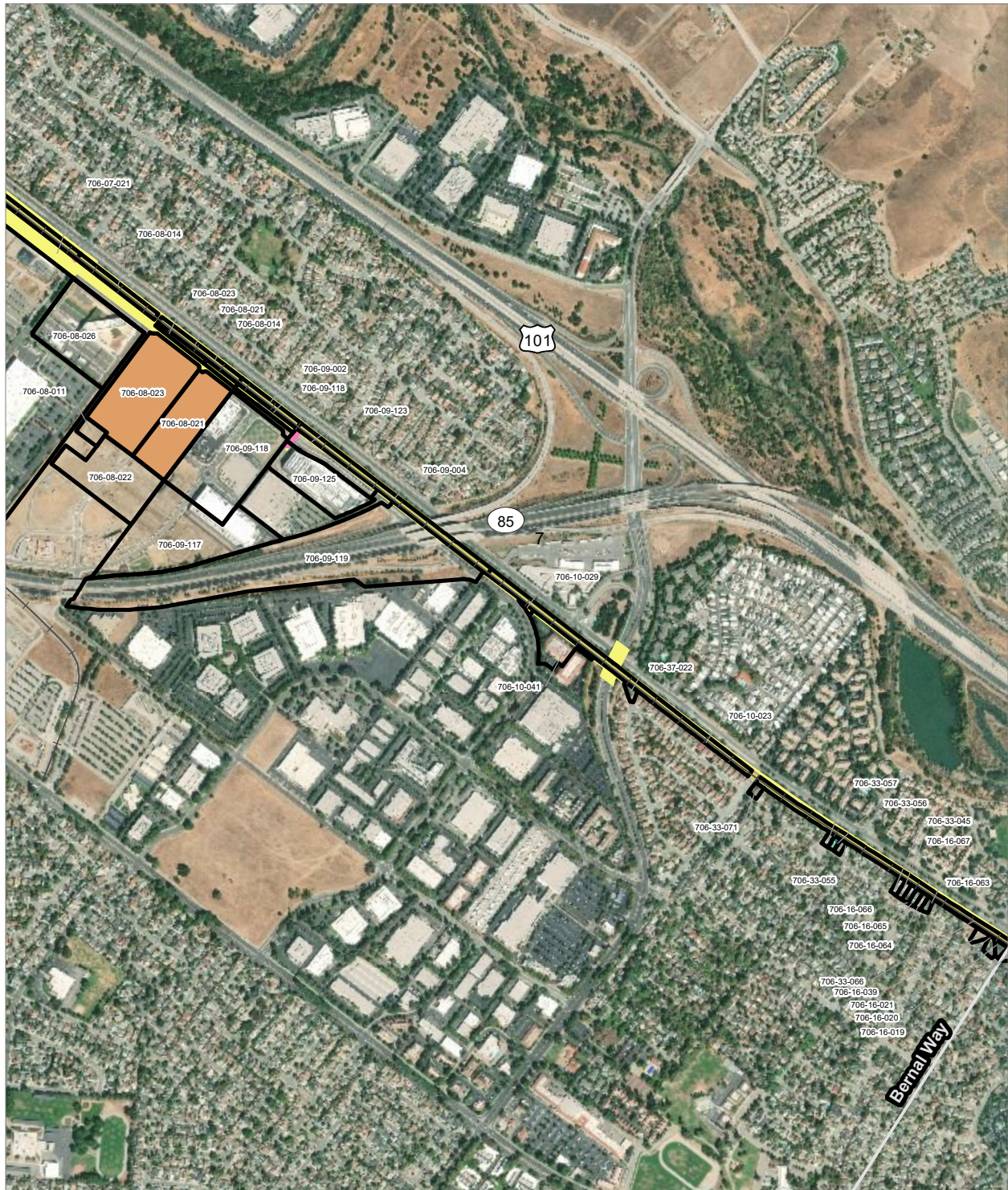
PRELIMINARY DRAFT/SUBJECT TO CHANGE - HSR ALIGNMENT IS NOT DETERMINED  
 SOURCE: ESRI, 2019; Santa Clara County, 2016; San Mateo County, 2016, San Francisco County, 2016



- HSR Right-of-Way
- Roadway Right-of-Way
- HSR Permanent Easement
- Permanent Utility Easement
- Temporary Construction Easement
- Temporary Utility Easement
- Parcel (APN Displayed)

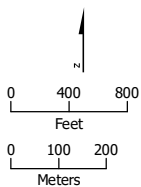
**Alternative 4**





PRELIMINARY DRAFT/SUBJECT TO CHANGE - HSR ALIGNMENT IS NOT DETERMINED  
 SOURCE: ESRI, 2019; Santa Clara County, 2016; San Mateo County, 2016, San Francisco County, 2016

**Alternative 4**



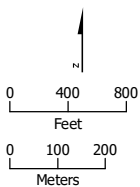
- HSR Right-of-Way
- HSR Permanent Easement
- Permanent Utility Easement
- Temporary Construction Easement
- Temporary Utility Easement
- Non-Viable Remnant Parcel
- Parcel (APN Displayed)







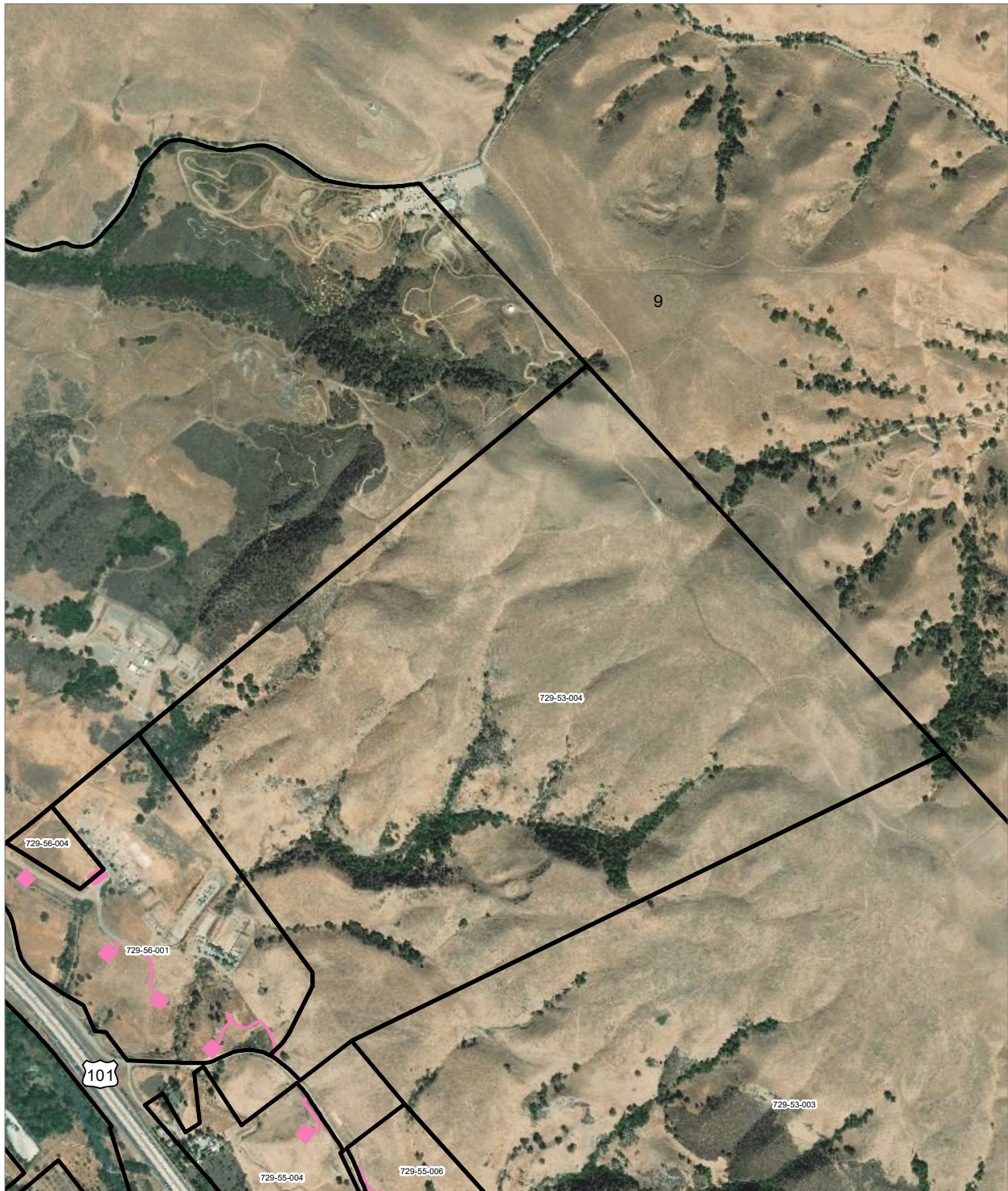
PRELIMINARY DRAFT/SUBJECT TO CHANGE - HSR ALIGNMENT IS NOT DETERMINED  
 SOURCE: ESRI, 2019; Santa Clara County, 2016; San Mateo County, 2016; San Francisco County, 2016



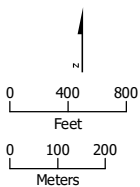
- HSR Right-of-Way
- Other Right-of-Way
- Roadway Right-of-Way
- HSR Permanent Easement
- Permanent Utility Easement
- Temporary Construction Easement
- Temporary Utility Easement
- Parcel (APN Displayed)

**Alternative 4**





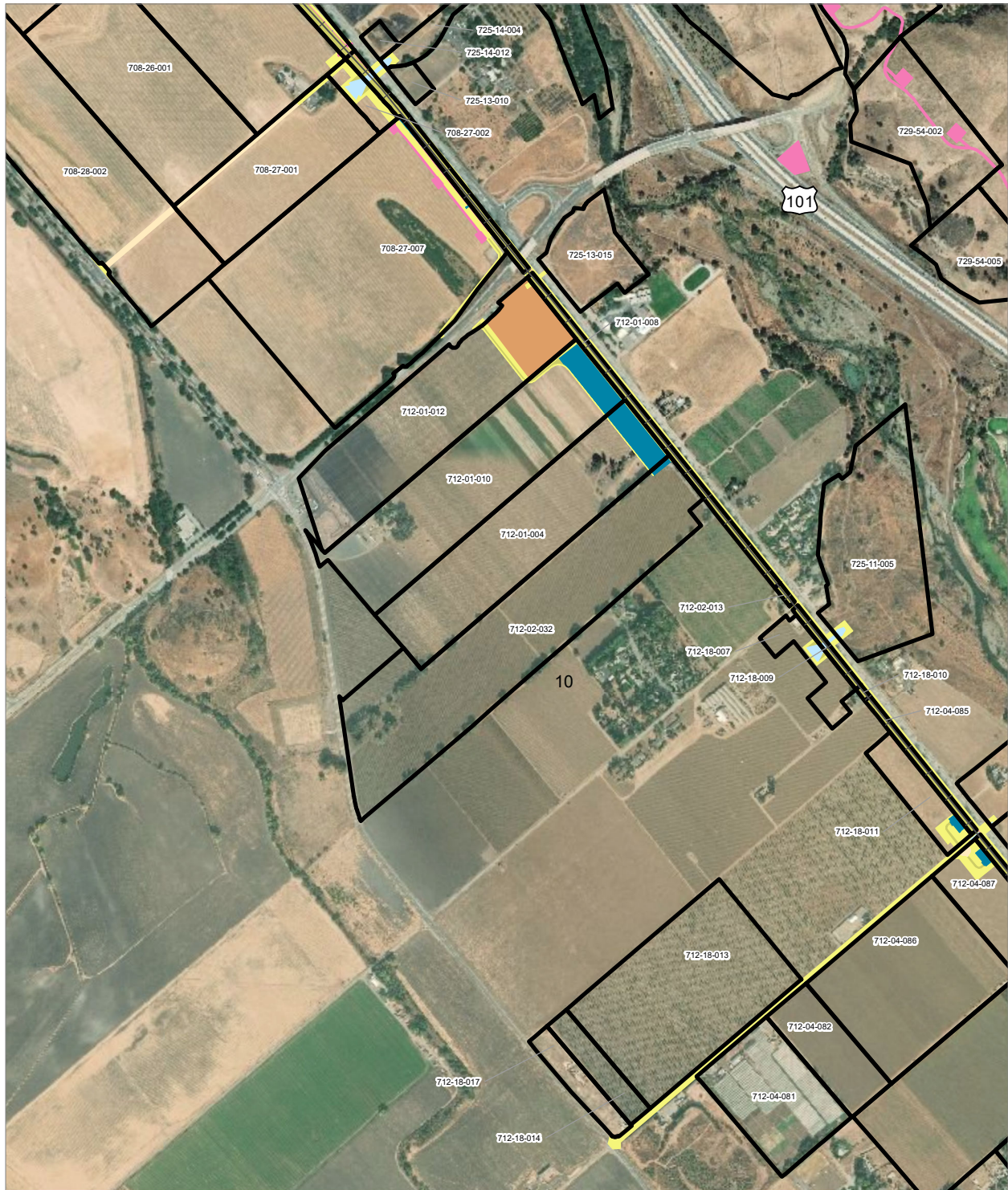
PRELIMINARY DRAFT/SUBJECT TO CHANGE - HSR ALIGNMENT IS NOT DETERMINED  
 SOURCE: ESRI, 2019; Santa Clara County, 2016; San Mateo County, 2016; San Francisco County, 2016



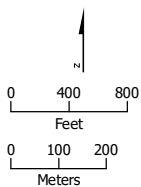
- Permanent Utility Easement
- Parcel (APN Displayed)

**Alternative 4**





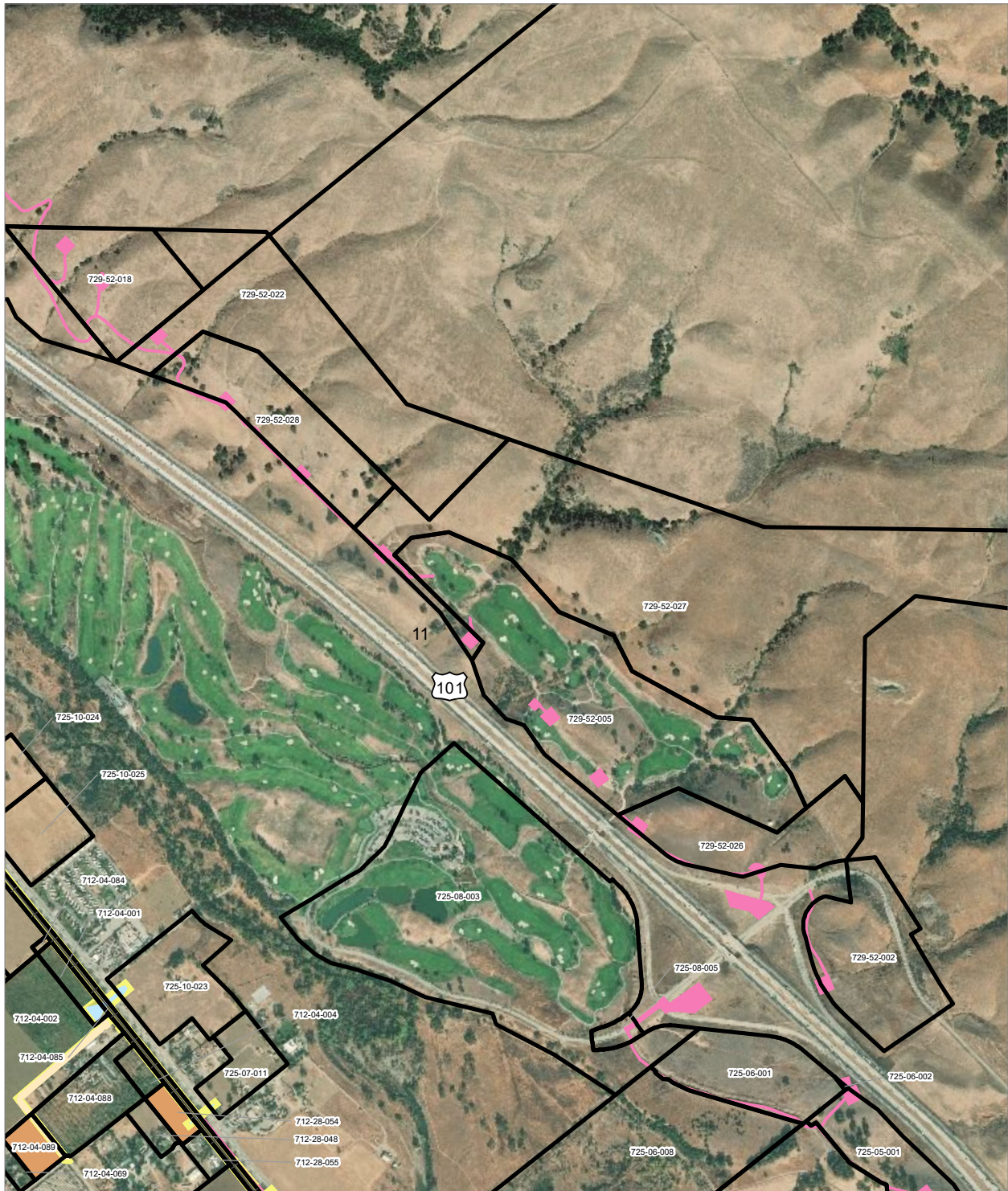
PRELIMINARY DRAFT/SUBJECT TO CHANGE - HSR ALIGNMENT IS NOT DETERMINED  
 SOURCE: ESRI, 2019; Santa Clara County, 2016; San Mateo County, 2016, San Francisco County, 2016



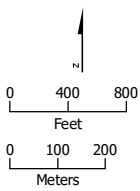
- HSR Right-of-Way
- Other Right-of-Way
- Roadway Right-of-Way
- HSR Permanent Easement
- Permanent Utility Easement
- Temporary Construction Easement
- Temporary Utility Easement
- Non-Viable Remnant Parcel
- Parcel (APN Displayed)



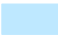
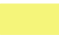




**Alternative 4**





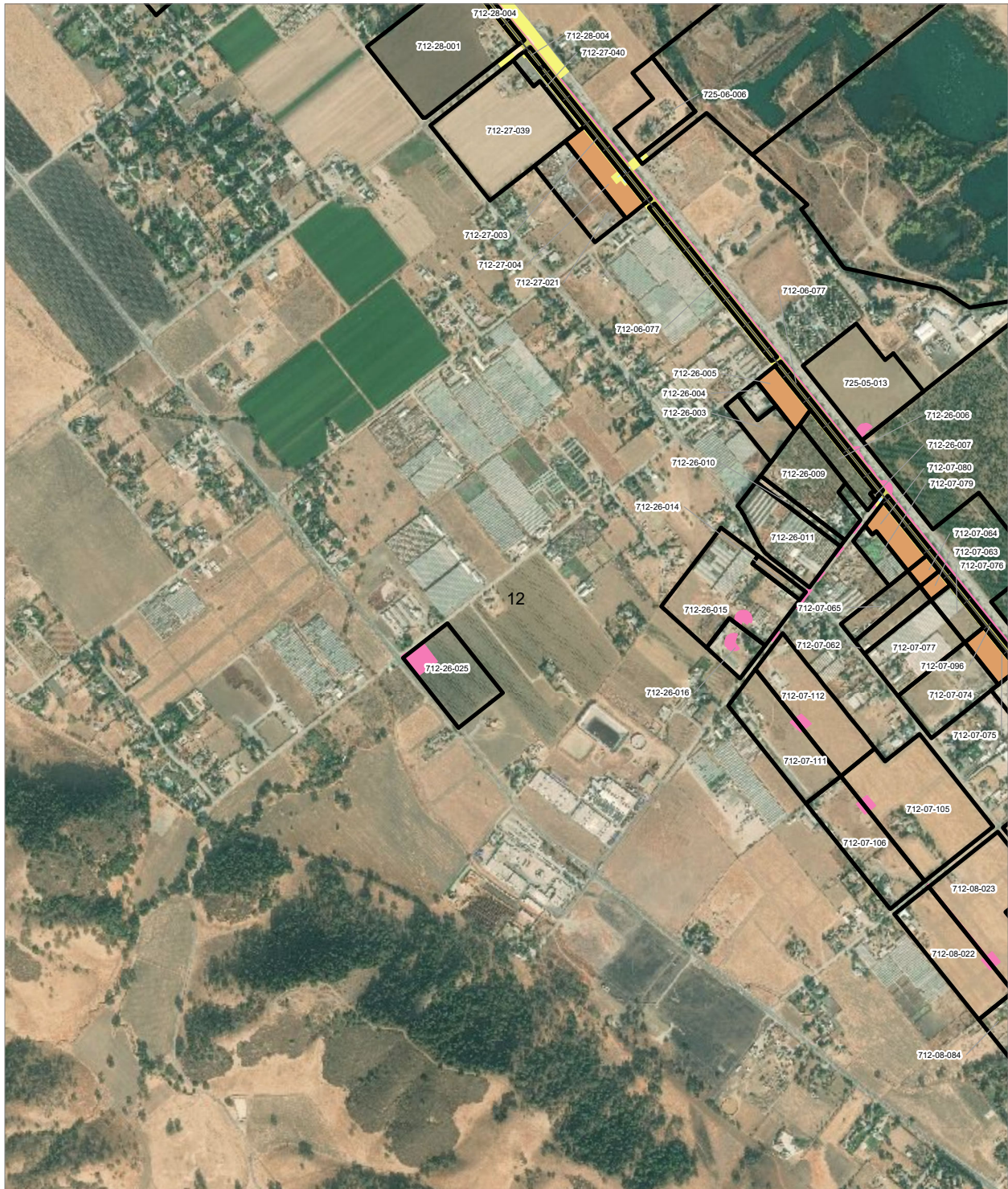
PRELIMINARY DRAFT/SUBJECT TO CHANGE - HSR ALIGNMENT IS NOT DETERMINED  
 SOURCE: ESRI, 2019; Santa Clara County, 2016; San Mateo County, 2016; San Francisco County, 2016



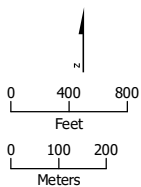
- |  |   |
|--|---|
|  HSR Right-of-Way       |  Permanent Utility Easement      |
|  Other Right-of-Way     |  Temporary Construction Easement |
|  Roadway Right-of-Way   |  Non-Viable Remnant Parcel       |
|  HSR Permanent Easement |  Parcel (APN Displayed)          |



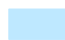

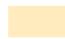



**Alternative 4**





PRELIMINARY DRAFT/SUBJECT TO CHANGE - HSR ALIGNMENT IS NOT DETERMINED  
 SOURCE: ESRI, 2019; Santa Clara County, 2016; San Mateo County, 2016; San Francisco County, 2016



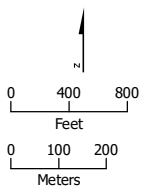
- |  |   |
|--|---|
|  HSR Right-of-Way       |  Permanent Utility Easement      |
|  Other Right-of-Way     |  Temporary Construction Easement |
|  Roadway Right-of-Way   |  Non-Viable Remnant Parcel       |
|  HSR Permanent Easement |  Parcel (APN Displayed)          |

**Alternative 4**





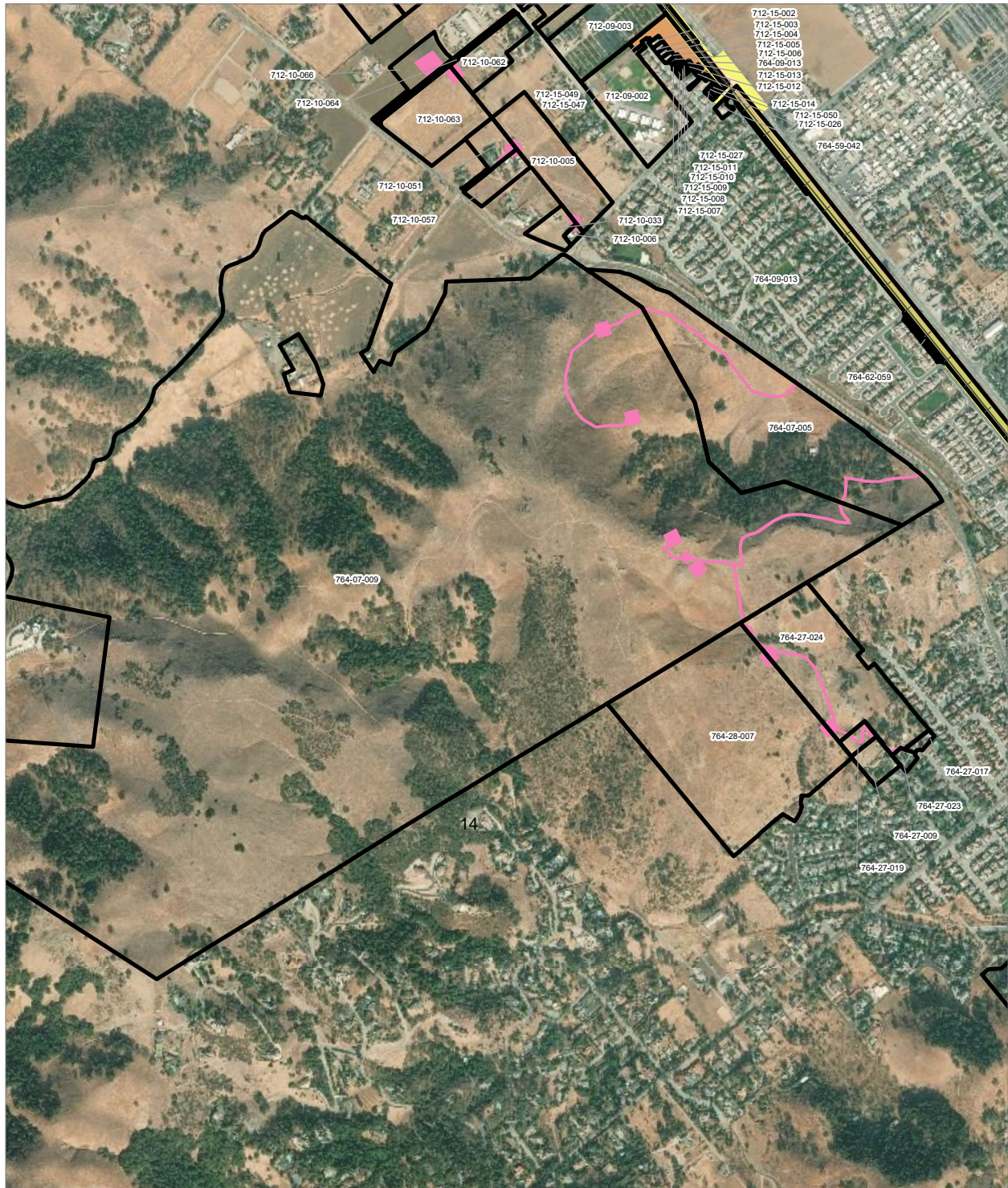
PRELIMINARY DRAFT/SUBJECT TO CHANGE - HSR ALIGNMENT IS NOT DETERMINED  
 SOURCE: ESRI, 2019; Santa Clara County, 2016; San Mateo County, 2016, San Francisco County, 2016



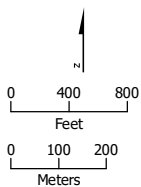
- HSR Right-of-Way
- Other Right-of-Way
- Roadway Right-of-Way
- Rail Right-of-Way
- HSR Permanent Easement
- Permanent Utility Easement
- Temporary Construction Easement
- Temporary Utility Easement
- Non-Viable Remnant Parcel
- Parcel (APN Displayed)

**Alternative 4**





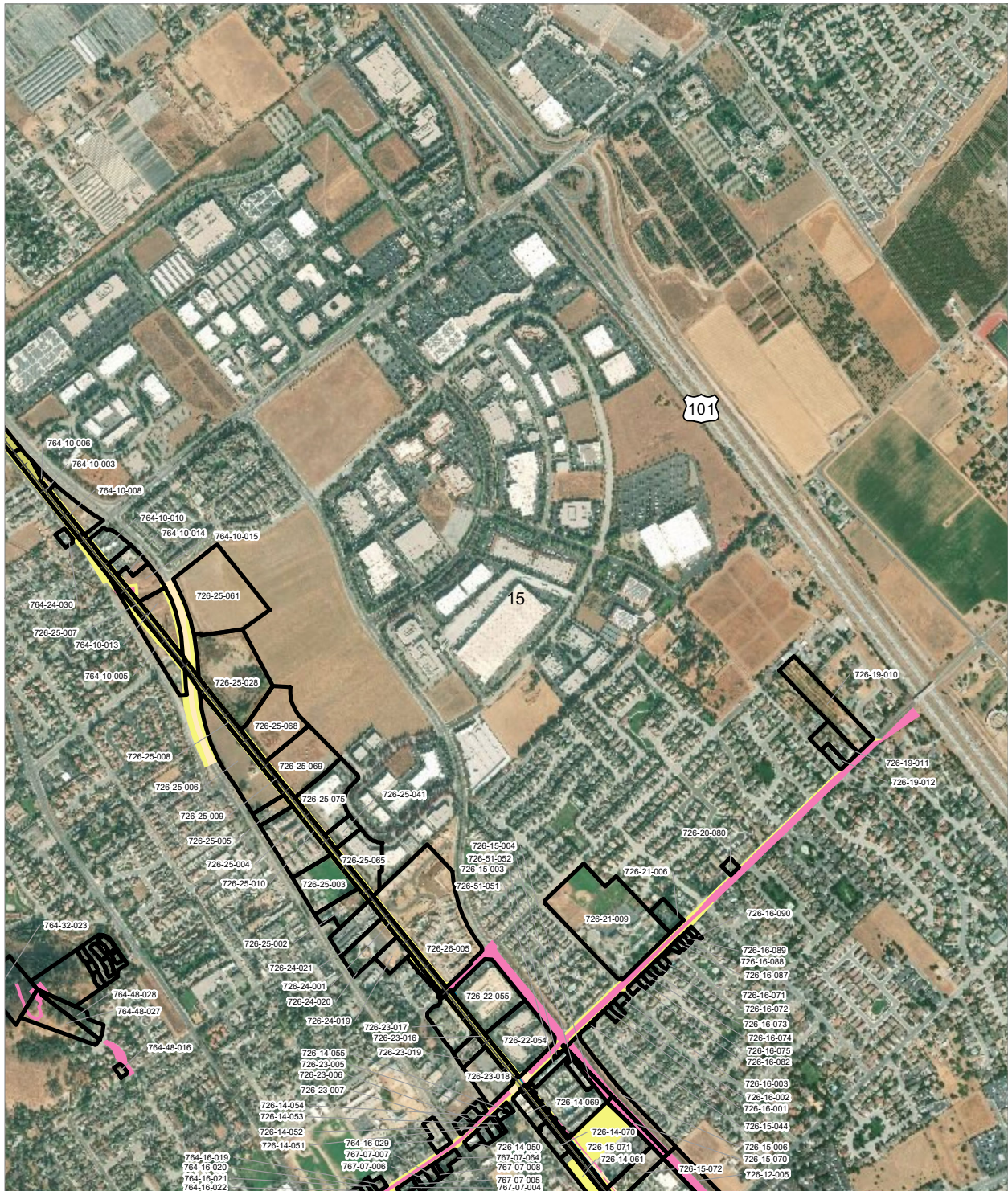
PRELIMINARY DRAFT/SUBJECT TO CHANGE - HSR ALIGNMENT IS NOT DETERMINED  
 SOURCE: ESRI, 2019; Santa Clara County, 2016; San Mateo County, 2016, San Francisco County, 2016



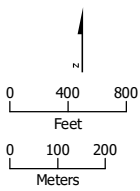
- HSR Right-of-Way
- Roadway Right-of-Way
- HSR Permanent Easement
- Permanent Utility Easement
- Temporary Construction Easement
- Temporary Utility Easement
- Non-Viable Remnant Parcel
- Parcel (APN Displayed)

**Alternative 4**





PRELIMINARY DRAFT/SUBJECT TO CHANGE - HSR ALIGNMENT IS NOT DETERMINED  
 SOURCE: ESRI, 2019; Santa Clara County, 2016; San Mateo County, 2016, San Francisco County, 2016

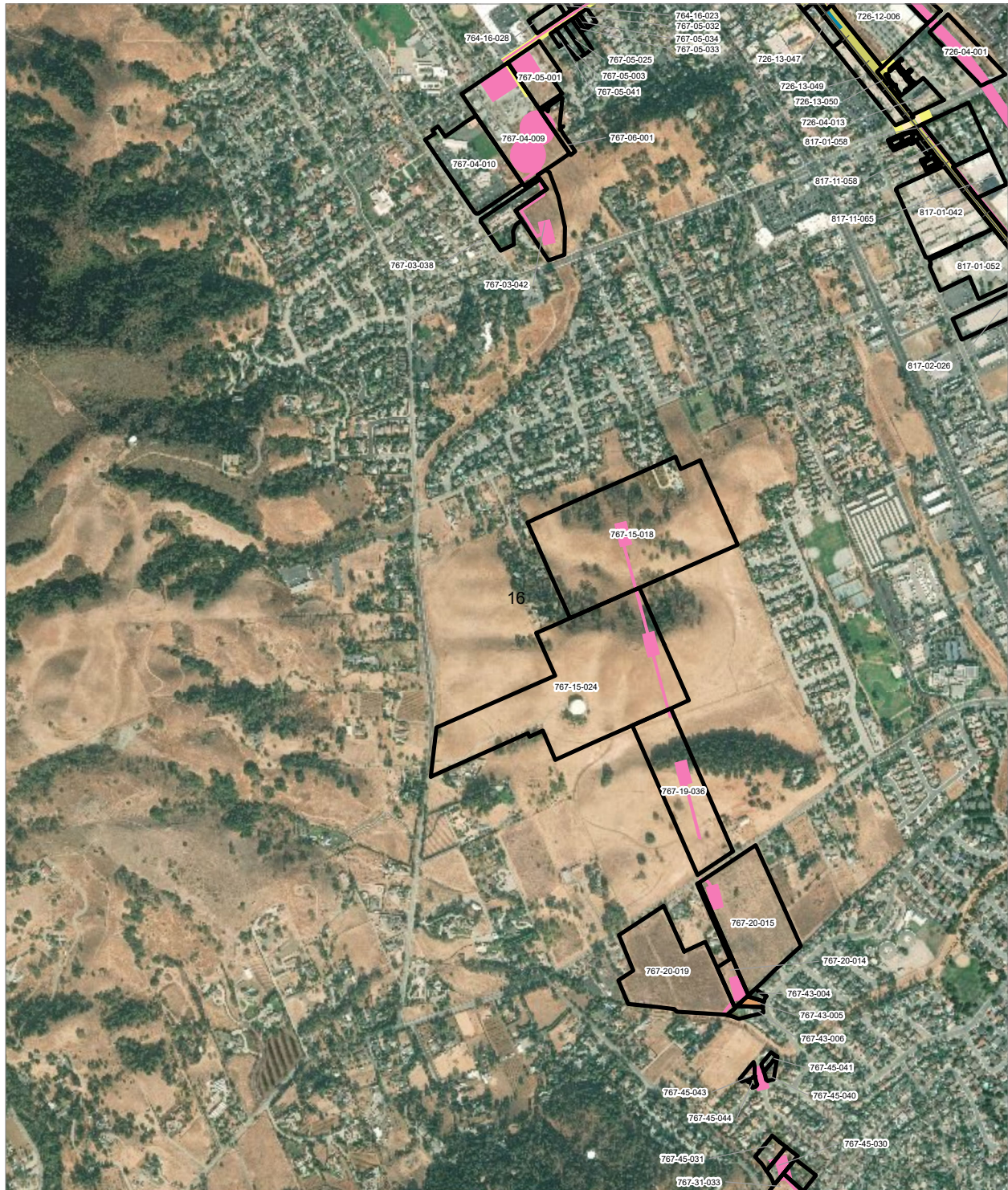


- HSR Right-of-Way
- Permanent Utility Easement
- Roadway Right-of-Way
- Temporary Construction Easement
- HSR Permanent Easement
- Temporary Utility Easement
- Parcel (APN Displayed)

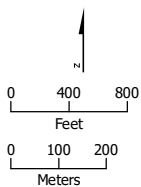
**Alternative 4**





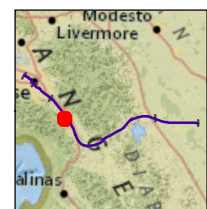


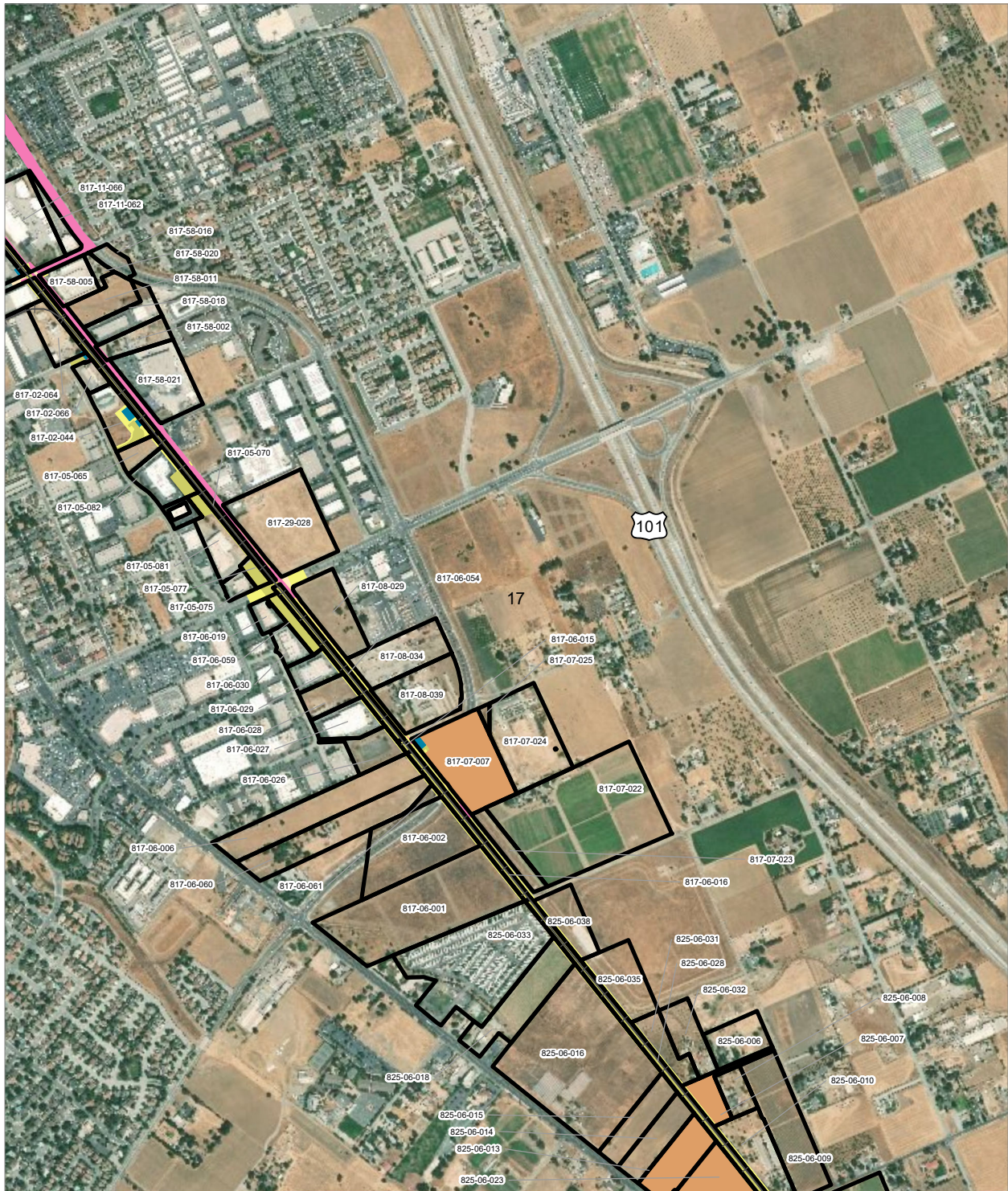
PRELIMINARY DRAFT/SUBJECT TO CHANGE - HSR ALIGNMENT IS NOT DETERMINED  
 SOURCE: ESRI, 2019; Santa Clara County, 2016; San Mateo County, 2016, San Francisco County, 2016



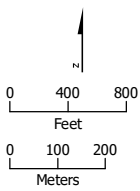
- HSR Right-of-Way
- Temporary Construction Easement
- Roadway Right-of-Way
- Temporary Utility Easement
- HSR Permanent Easement
- Non-Viable Remnant Parcel
- Permanent Utility Easement
- Parcel (APN Displayed)

**Alternative 4**





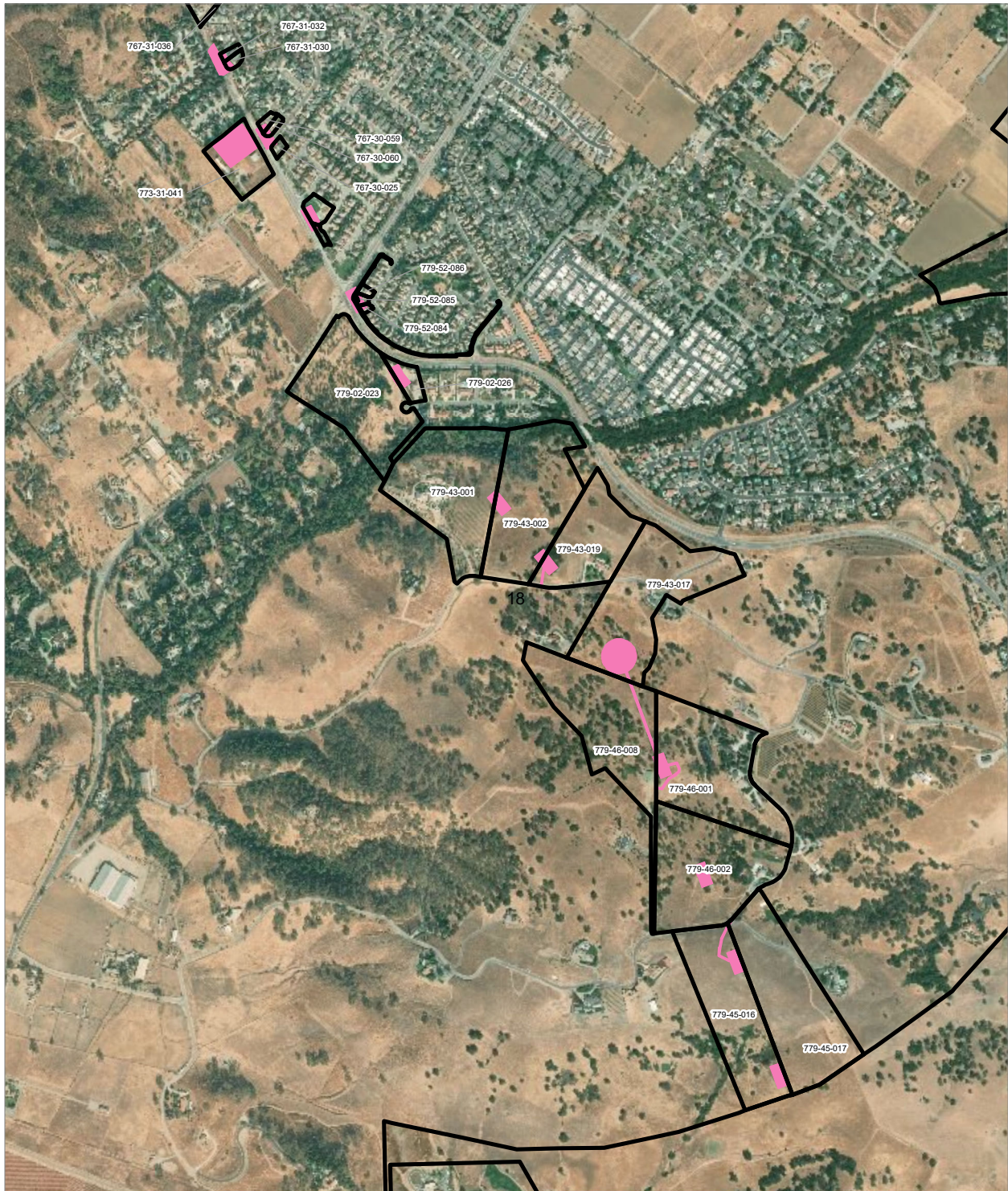
PRELIMINARY DRAFT/SUBJECT TO CHANGE - HSR ALIGNMENT IS NOT DETERMINED  
 SOURCE: ESRI, 2019; Santa Clara County, 2016; San Mateo County, 2016, San Francisco County, 2016



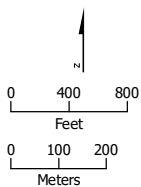
- HSR Right-of-Way
- Roadway Right-of-Way
- HSR Permanent Easement
- Permanent Utility Easement
- Temporary Construction Easement
- Non-Viable Remnant Parcel
- Parcel (APN Displayed)

**Alternative 4**





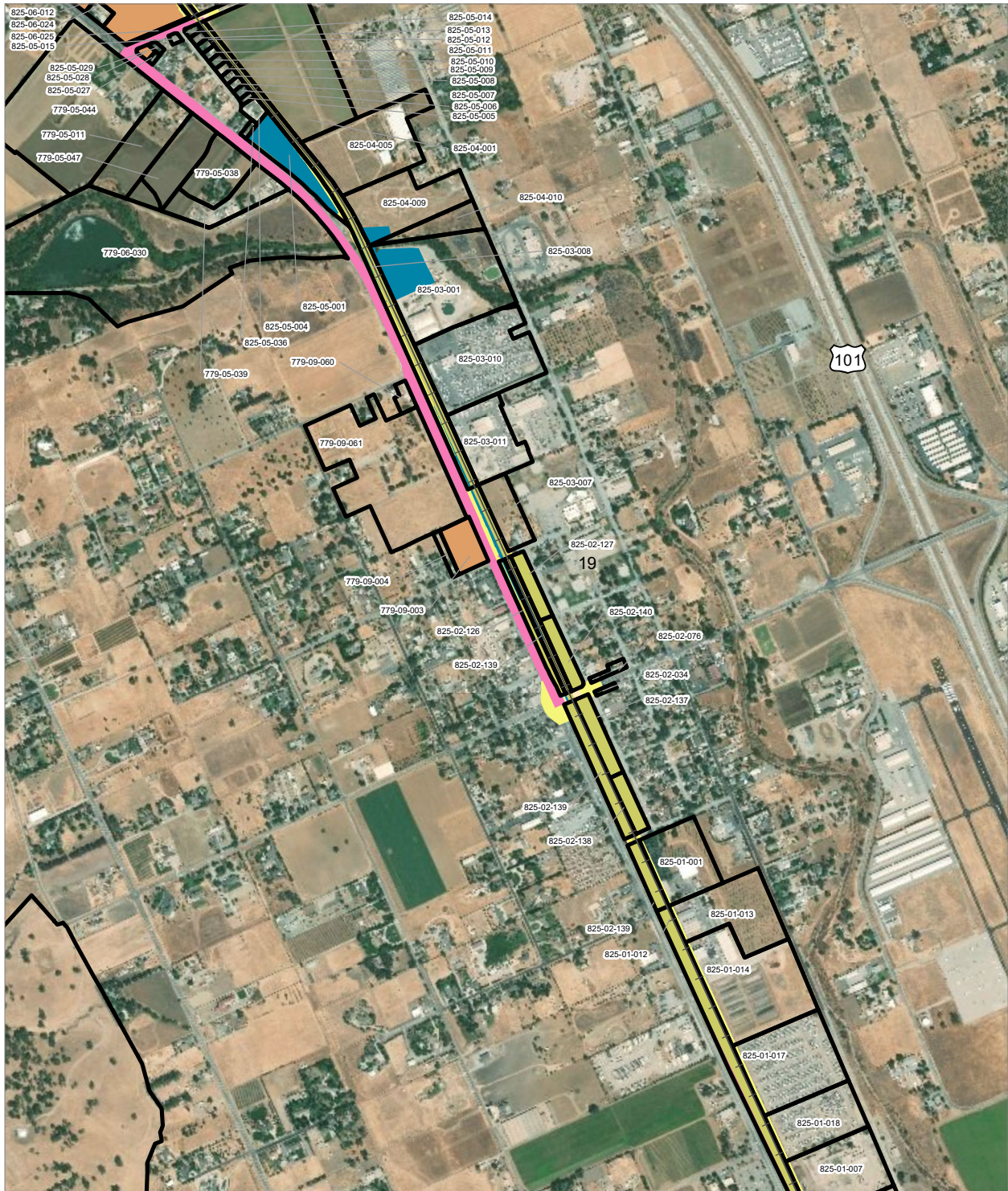
PRELIMINARY DRAFT/SUBJECT TO CHANGE - HSR ALIGNMENT IS NOT DETERMINED  
 SOURCE: ESRI, 2019; Santa Clara County, 2016; San Mateo County, 2016; San Francisco County, 2016



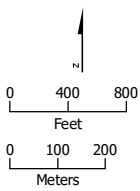
- Permanent Utility Easement
- Parcel (APN Displayed)

**Alternative 4**





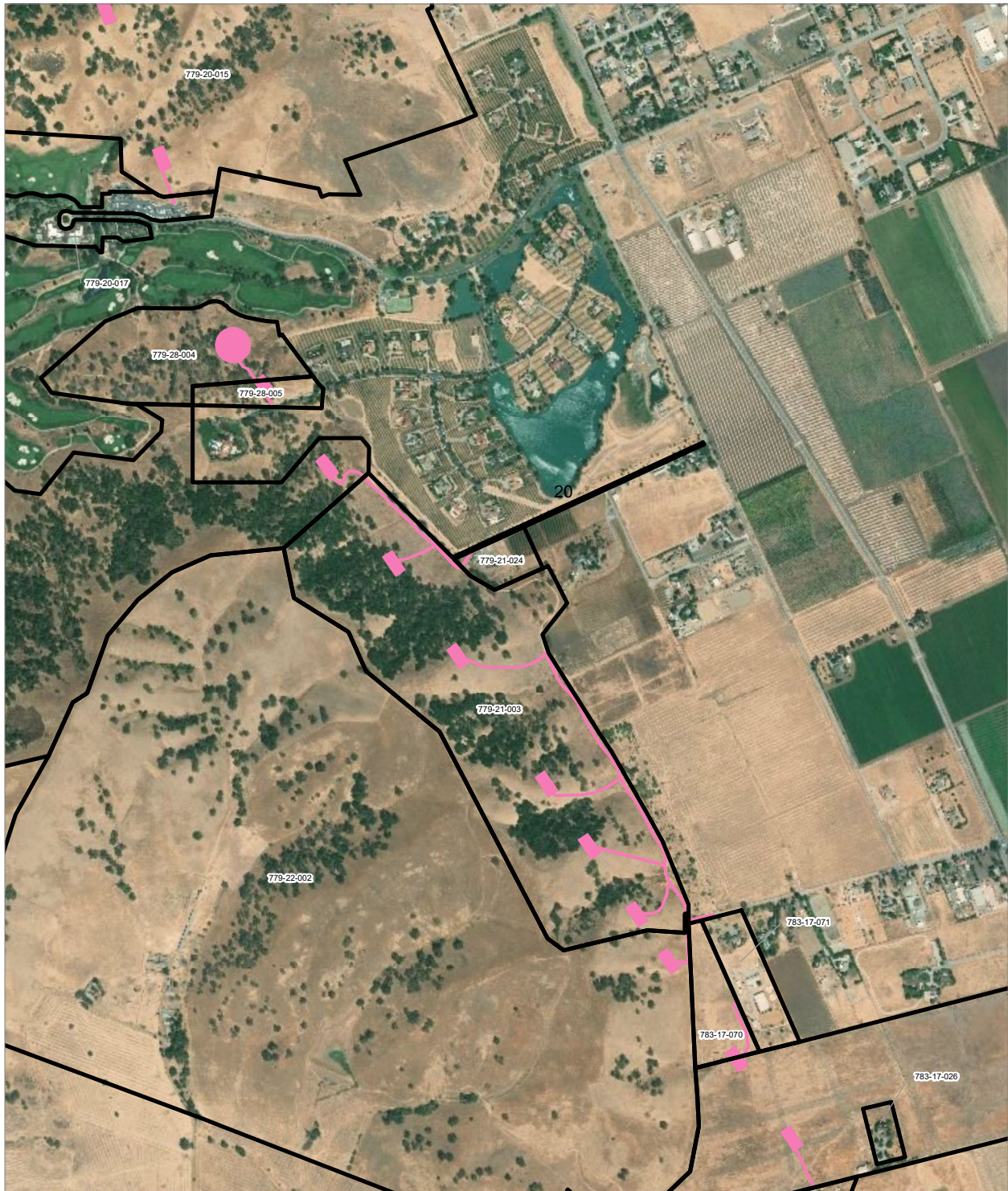
PRELIMINARY DRAFT/SUBJECT TO CHANGE - HSR ALIGNMENT IS NOT DETERMINED  
 SOURCE: ESRI, 2019; Santa Clara County, 2016; San Mateo County, 2016, San Francisco County, 2016



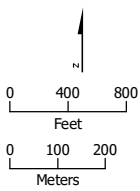
- HSR Right-of-Way
- Roadway Right-of-Way
- HSR Permanent Easement
- Permanent Utility Easement
- Temporary Construction Easement
- Non-Viable Remnant Parcel
- Parcel (APN Displayed)

**Alternative 4**





PRELIMINARY DRAFT/SUBJECT TO CHANGE - HSR ALIGNMENT IS NOT DETERMINED  
 SOURCE: ESRI, 2019; Santa Clara County, 2016; San Mateo County, 2016; San Francisco County, 2016



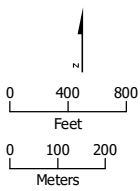
- Permanent Utility Easement
- Parcel (APN Displayed)


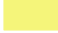






**Alternative 4**





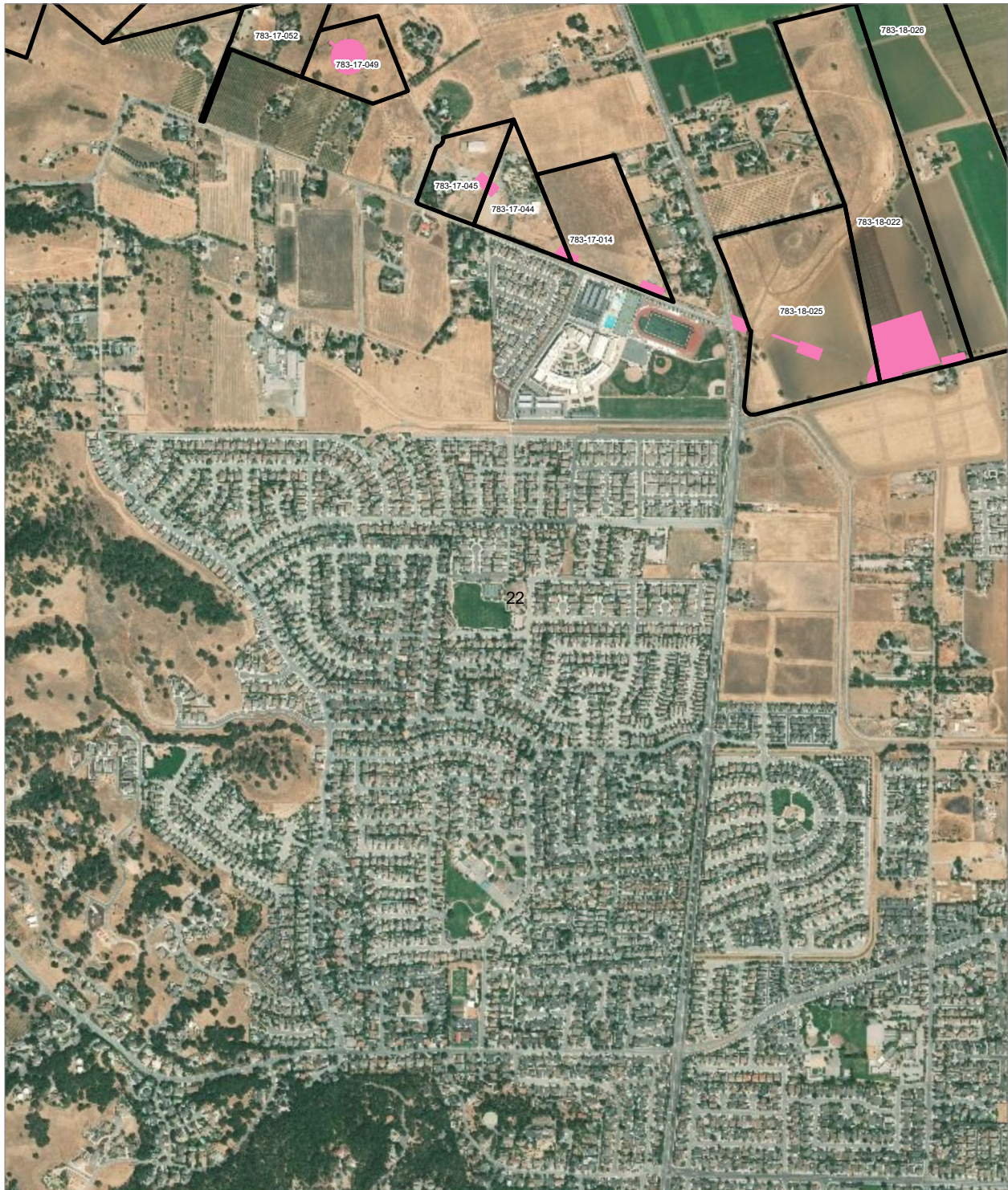
PRELIMINARY DRAFT/SUBJECT TO CHANGE - HSR ALIGNMENT IS NOT DETERMINED  
 SOURCE: ESRI, 2019; Santa Clara County, 2016; San Mateo County, 2016, San Francisco County, 2016



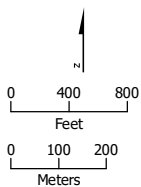
- |  |   |
|--|---|
|  HSR Right-of-Way           |  Temporary Construction Easement |
|  Roadway Right-of-Way       |  Temporary Utility Easement      |
|  HSR Permanent Easement     |  Non-Viable Remnant Parcel       |
|  Permanent Utility Easement |  Parcel (APN Displayed)          |

**Alternative 4**





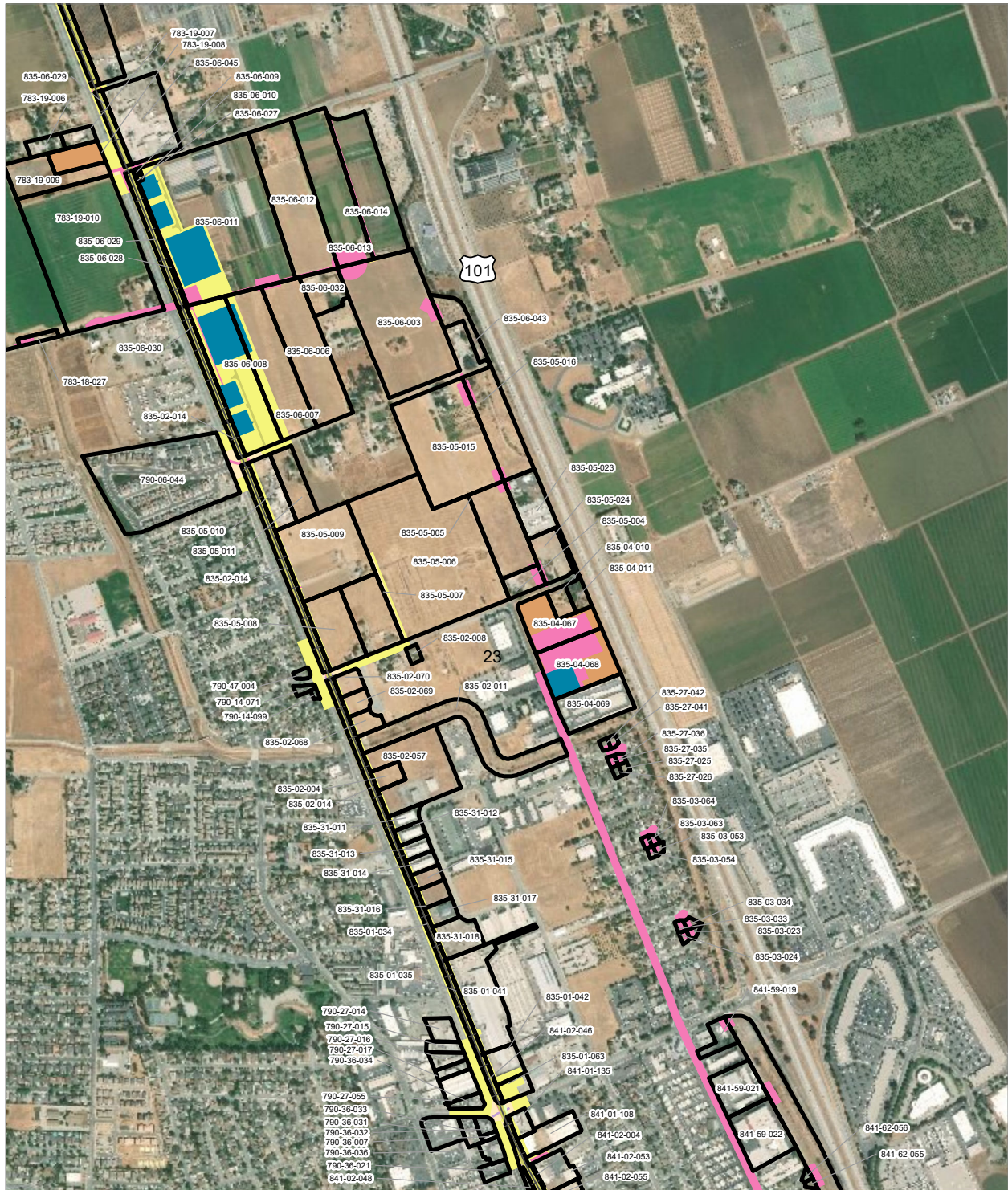
PRELIMINARY DRAFT/SUBJECT TO CHANGE - HSR ALIGNMENT IS NOT DETERMINED  
 SOURCE: ESRI, 2019; Santa Clara County, 2016; San Mateo County, 2016; San Francisco County, 2016



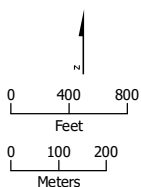
- Permanent Utility Easement
- Parcel (APN Displayed)





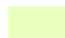




**Alternative 4**





PRELIMINARY DRAFT/SUBJECT TO CHANGE - HSR ALIGNMENT IS NOT DETERMINED  
 SOURCE: ESRI, 2019; Santa Clara County, 2016; San Mateo County, 2016, San Francisco County, 2016

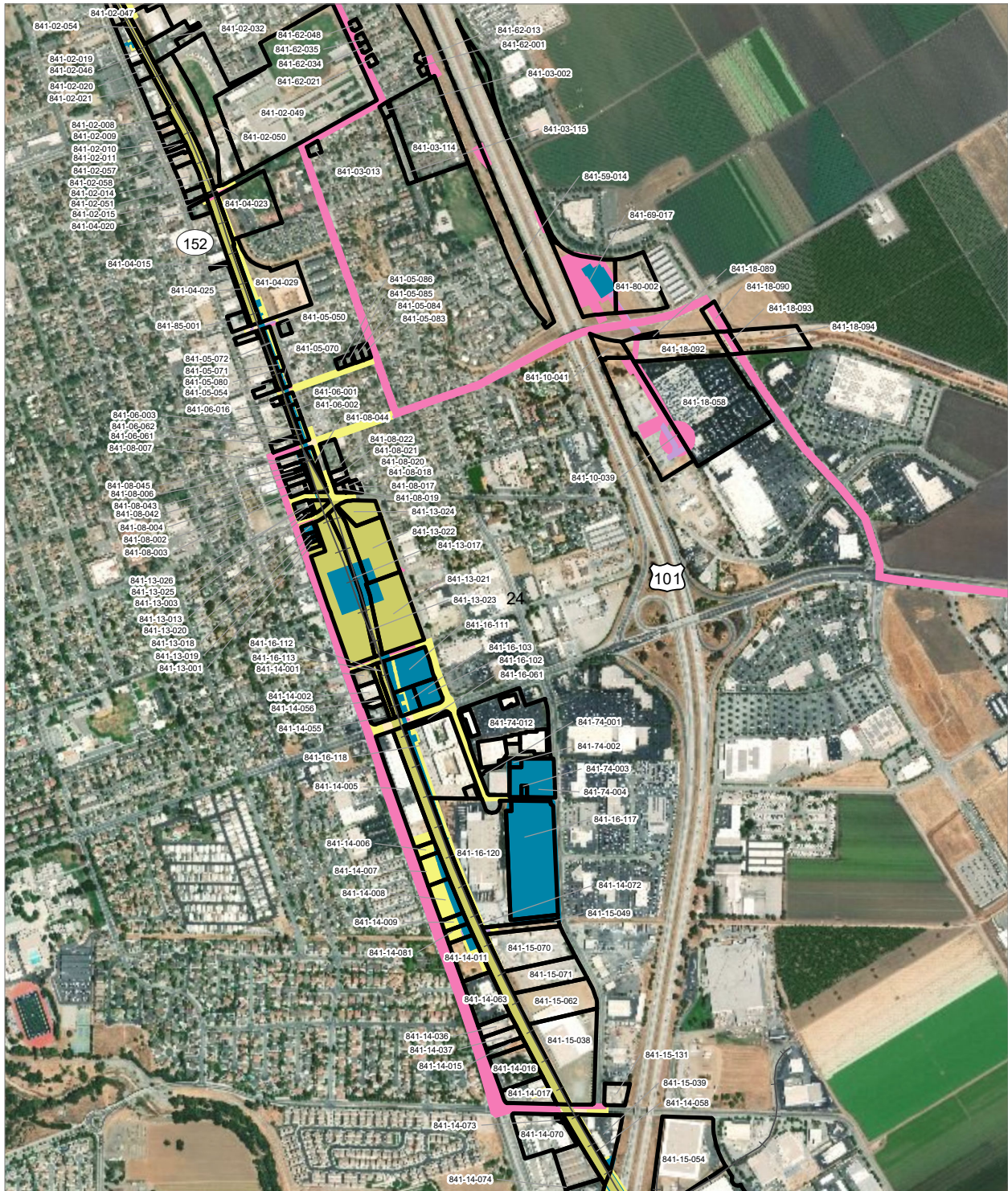


- |  |   |
|--|---|
|  HSR Right-of-Way       |  Permanent Utility Easement      |
|  Roadway Right-of-Way   |  Temporary Construction Easement |
|  Rail Right-of-Way      |  Temporary Utility Easement      |
|  HSR Permanent Easement |  Non-Viable Remnant Parcel       |
|  Parcel (APN Displayed) |   |

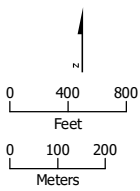
**Alternative 4**







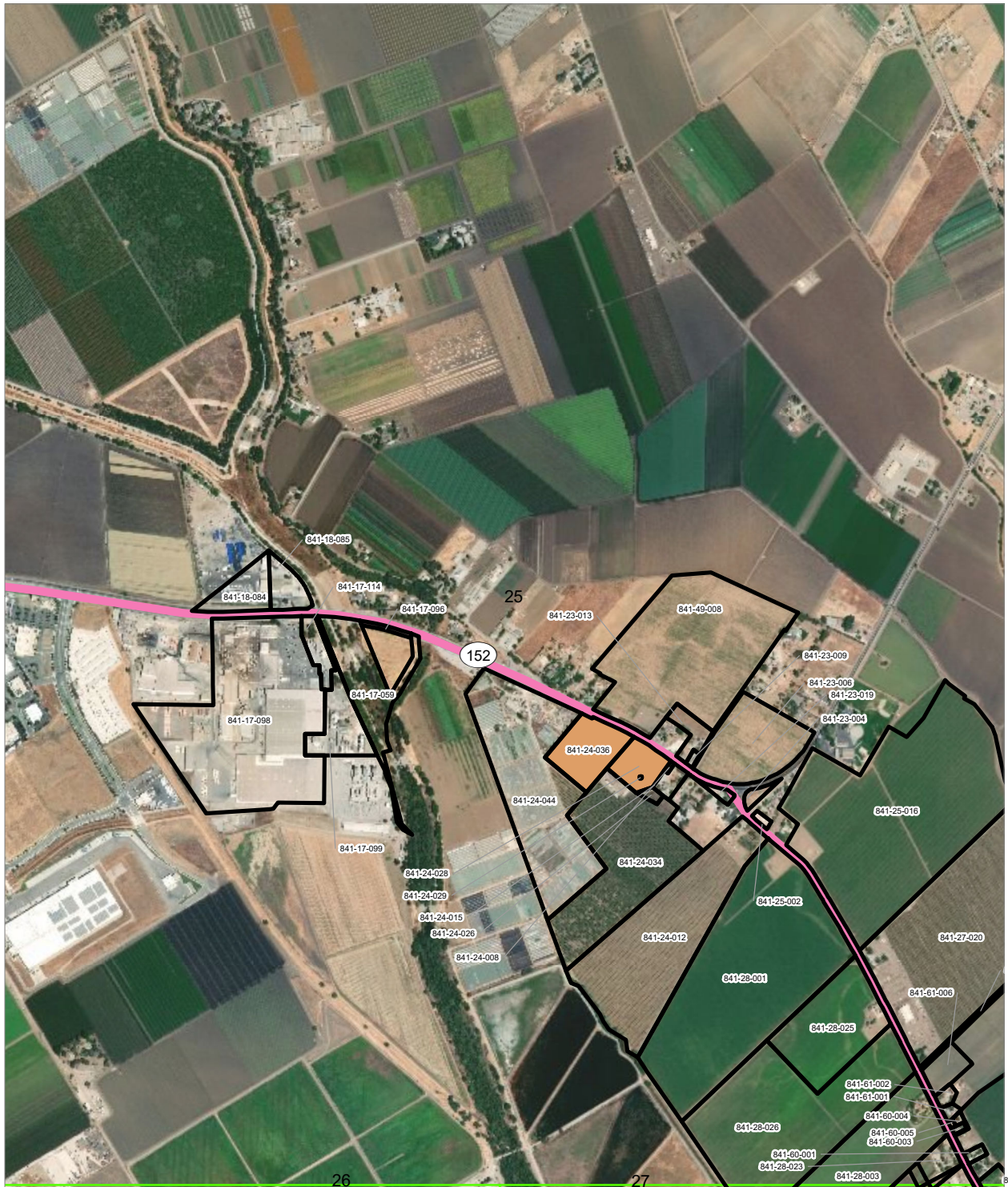
PRELIMINARY DRAFT/SUBJECT TO CHANGE - HSR ALIGNMENT IS NOT DETERMINED  
 SOURCE: ESRI, 2019; Santa Clara County, 2016; San Mateo County, 2016, San Francisco County, 2016



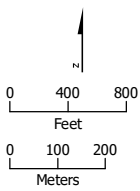
- HSR Right-of-Way
- Permanent Utility Easement
- Roadway Right-of-Way
- HSR Permanent Easement
- Temporary Utility Easement
- Parcel (APN Displayed)

**Alternative 4**





PRELIMINARY DRAFT/SUBJECT TO CHANGE - HSR ALIGNMENT IS NOT DETERMINED  
 SOURCE: ESRI, 2019; Santa Clara County, 2016; San Mateo County, 2016; San Francisco County, 2016



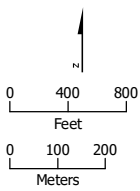
- Permanent Utility Easement
- Non-Viable Remnant Parcel
- Parcel (APN Displayed)

**Alternative 4**





PRELIMINARY DRAFT/SUBJECT TO CHANGE - HSR ALIGNMENT IS NOT DETERMINED  
 SOURCE: ESRI, 2019; Santa Clara County, 2016; San Mateo County, 2016, San Francisco County, 2016



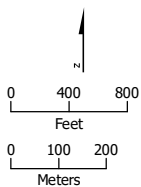
- HSR Right-of-Way
- Roadway Right-of-Way
- Rail Right-of-Way
- HSR Permanent Easement
- Permanent Utility Easement
- Temporary Construction Easement
- Non-Viable Remnant Parcel
- Parcel (APN Displayed)

**Alternative 4**





PRELIMINARY DRAFT/SUBJECT TO CHANGE. HSR ALIGNMENT IS NOT DETERMINED  
 SOURCE: ESRI, 2019; Santa Clara County, 2016; San Mateo County, 2016, San Francisco County, 2016



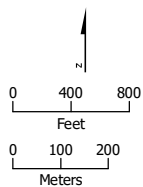
- HSR Right-of-Way
- Roadway Right-of-Way
- HSR Permanent Easement
- Permanent Utility Easement
- Temporary Construction Easement
- Non-Viable Remnant Parcel
- Parcel (APN Displayed)

**Alternative 4**





PRELIMINARY DRAFT/SUBJECT TO CHANGE - HSR ALIGNMENT IS NOT DETERMINED  
 SOURCE: ESRI, 2019; Santa Clara County, 2016; San Mateo County, 2016, San Francisco County, 2016



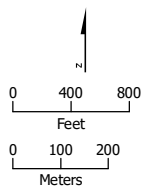
- HSR Right-of-Way
- HSR Permanent Easement
- Permanent Utility Easement
- Temporary Construction Easement
- Temporary Utility Easement
- Non-Viable Remnant Parcel
- Parcel (APN Displayed)

**Alternative 4**





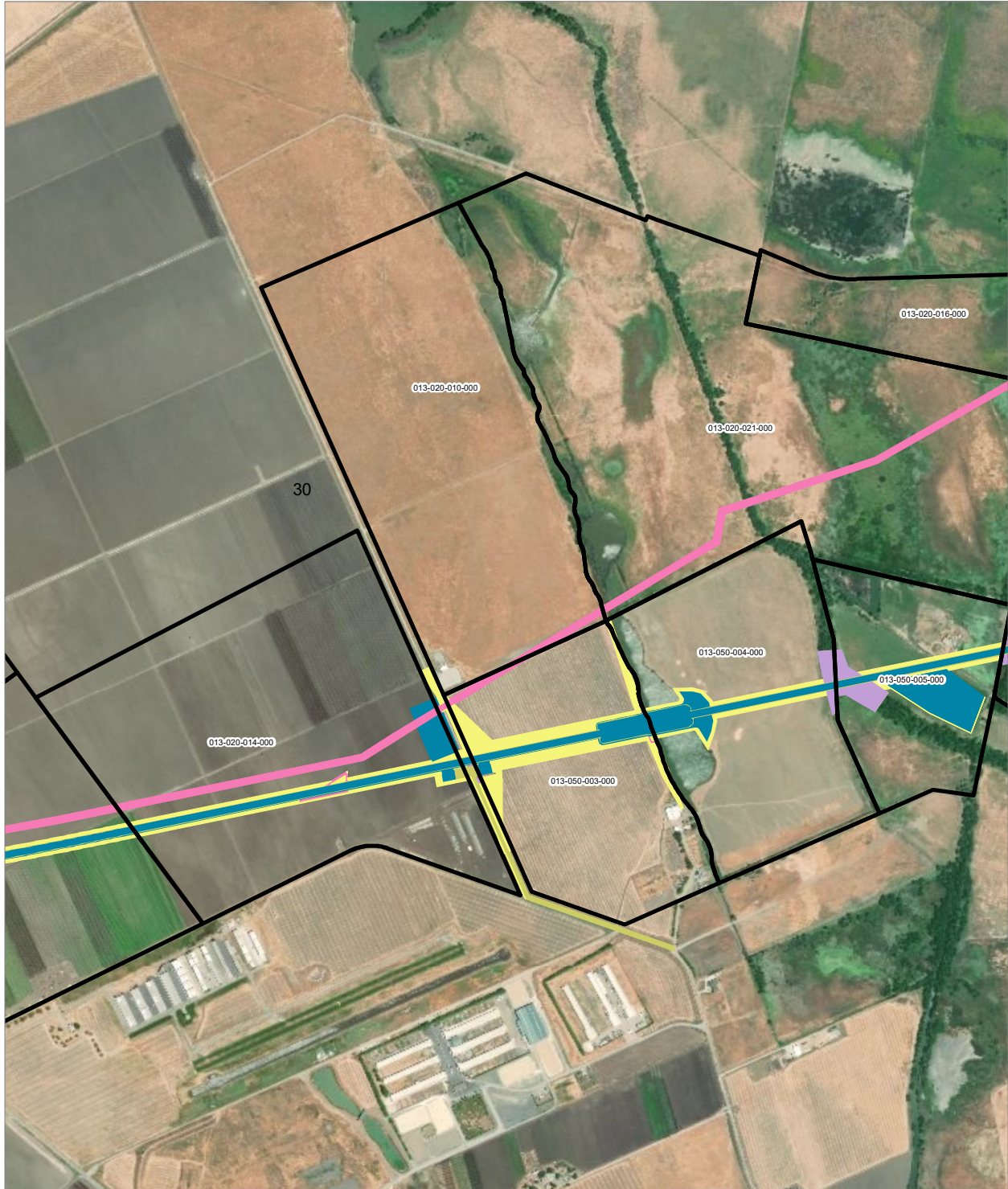
PRELIMINARY DRAFT/SUBJECT TO CHANGE - HSR ALIGNMENT IS NOT DETERMINED  
 SOURCE: ESRI, 2019; Santa Clara County, 2016; San Mateo County, 2016, San Francisco County, 2016



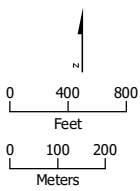
- HSR Right-of-Way
- HSR Permanent Easement
- Permanent Utility Easement
- Temporary Construction Easement
- Temporary Utility Easement
- Non-Viable Remnant Parcel
- Parcel (APN Displayed)

**Alternative 4**





PRELIMINARY DRAFT/SUBJECT TO CHANGE - HSR ALIGNMENT IS NOT DETERMINED  
 SOURCE: ESRI, 2019; Santa Clara County, 2016; San Mateo County, 2016, San Francisco County, 2016



- HSR Right-of-Way
- Temporary Construction Easement
- HSR Permanent Easement
- Temporary Utility Easement
- Permanent Utility Easement
- Non-Viable Remnant Parcel
- Parcel (APN Displayed)

**Alternative 4**

