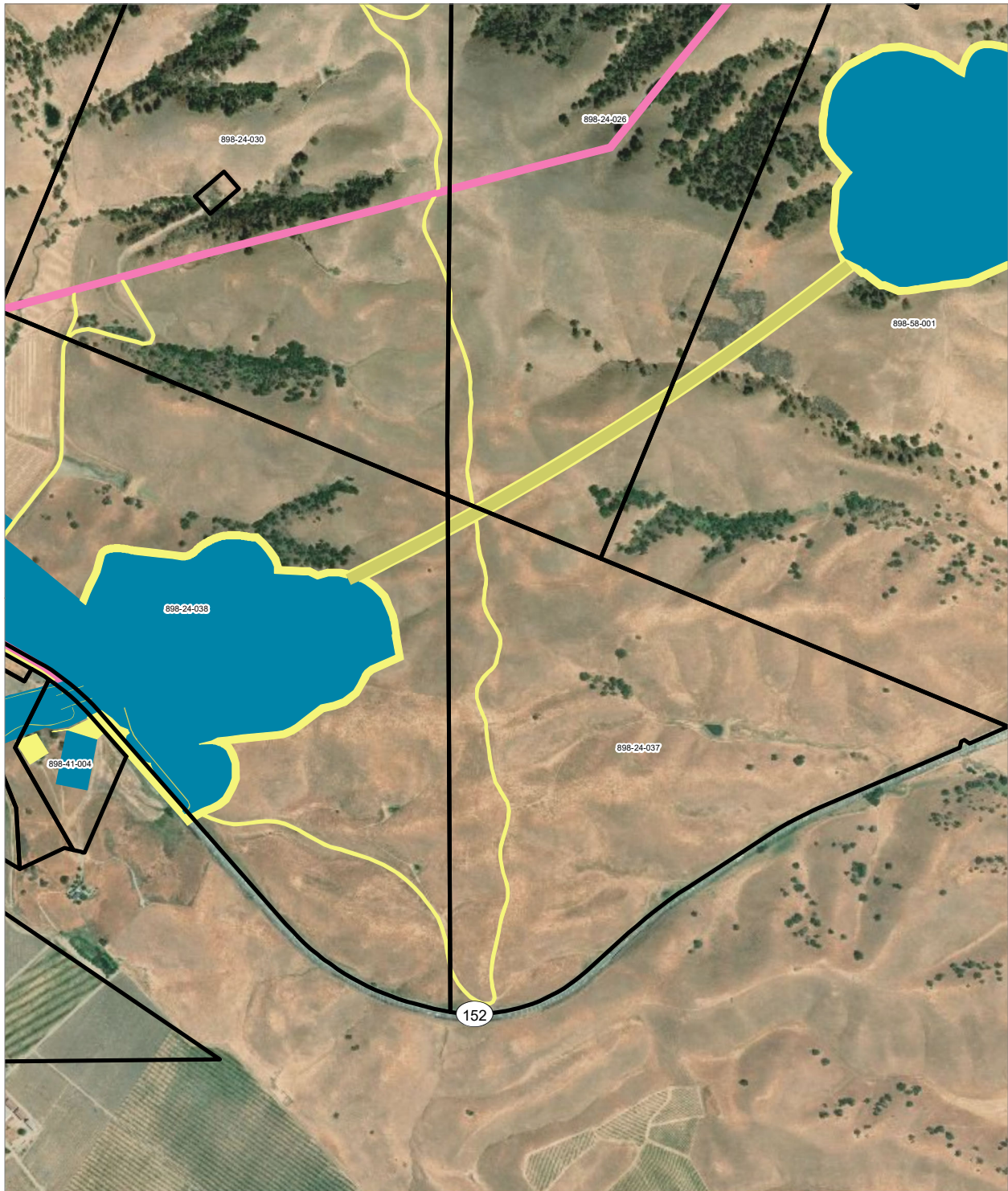
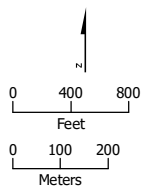


## **APPENDIX 3.1-A: PARCELS WITHIN THE HSR PROJECT FOOTPRINT (Alternative 3, Part 2)**



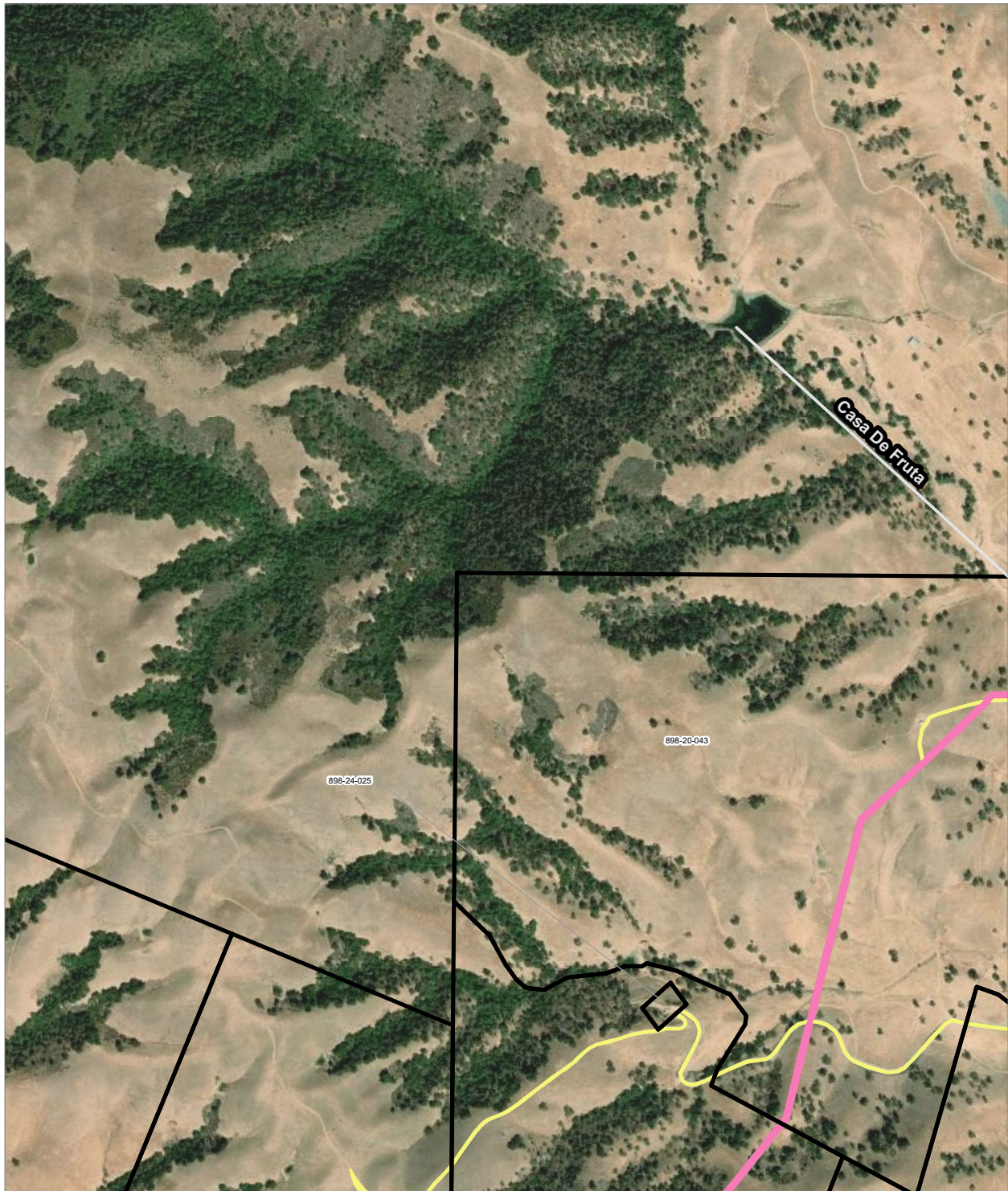
PRELIMINARY DRAFT/SUBJECT TO CHANGE - HSR ALIGNMENT IS NOT DETERMINED  
 SOURCE: ESRI, 2019; Santa Clara County, 2016; San Mateo County, 2016; San Francisco County, 2016



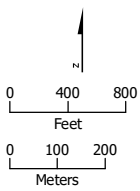
- HSR Right-of-Way
- Permanent Utility Easement
- HSR Permanent Easement
- Temporary Construction Easement
- Parcel (APN Displayed)

**Alternative 3**





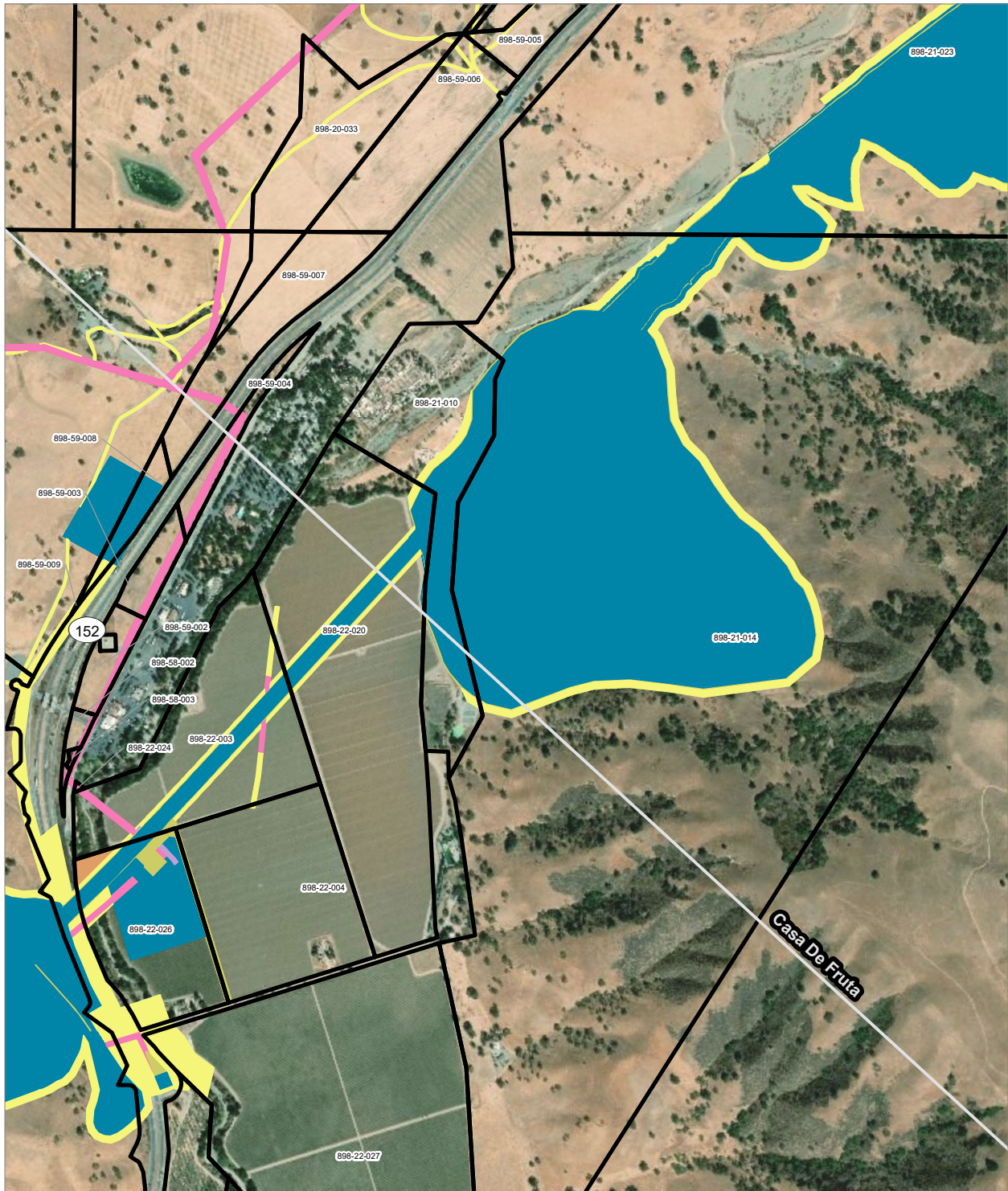
PRELIMINARY DRAFT/SUBJECT TO CHANGE - HSR ALIGNMENT IS NOT DETERMINED  
 SOURCE: ESRI, 2019; Santa Clara County, 2016; San Mateo County, 2016, San Francisco County, 2016



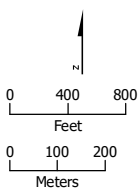
- Permanent Utility Easement
- Temporary Construction Easement
- Parcel (APN Displayed)

**Alternative 3**





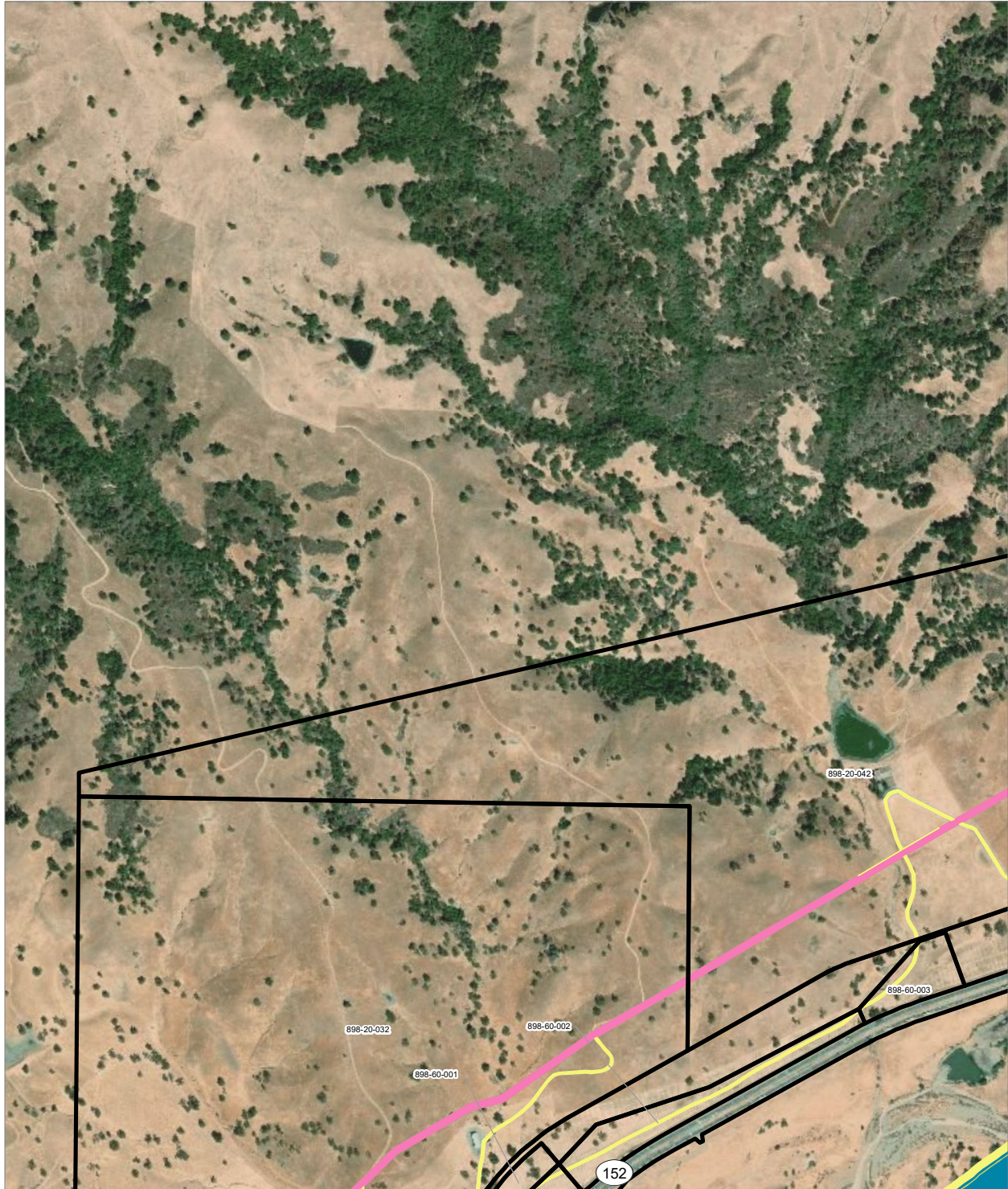
PRELIMINARY DRAFT/SUBJECT TO CHANGE - HSR ALIGNMENT IS NOT DETERMINED  
 SOURCE: ESRI, 2019; Santa Clara County, 2016; San Mateo County, 2016, San Francisco County, 2016



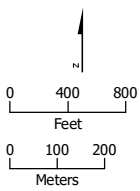
- HSR Right-of-Way
- Temporary Construction Easement
- HSR Permanent Easement
- Temporary Utility Easement
- Permanent Utility Easement
- Non-Viable Remnant Parcel
- Parcel (APN Displayed)

**Alternative 3**





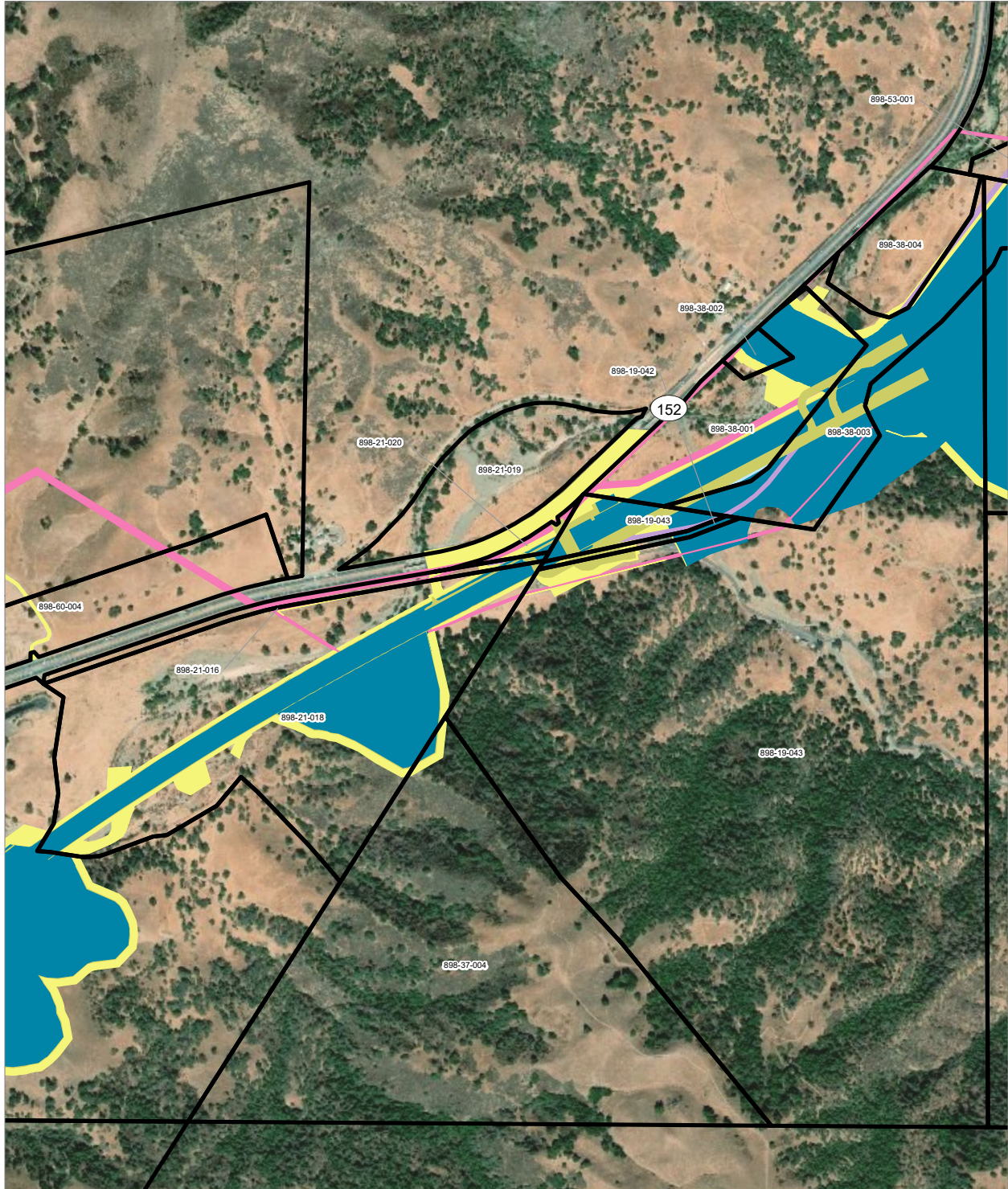
PRELIMINARY DRAFT/SUBJECT TO CHANGE - HSR ALIGNMENT IS NOT DETERMINED  
 SOURCE: ESRI, 2019; Santa Clara County, 2016; San Mateo County, 2016; San Francisco County, 2016



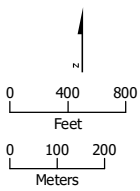
- HSR Right-of-Way
- HSR Permanent Easement
- Permanent Utility Easement
- Temporary Construction Easement
- Parcel (APN Displayed)

**Alternative 3**





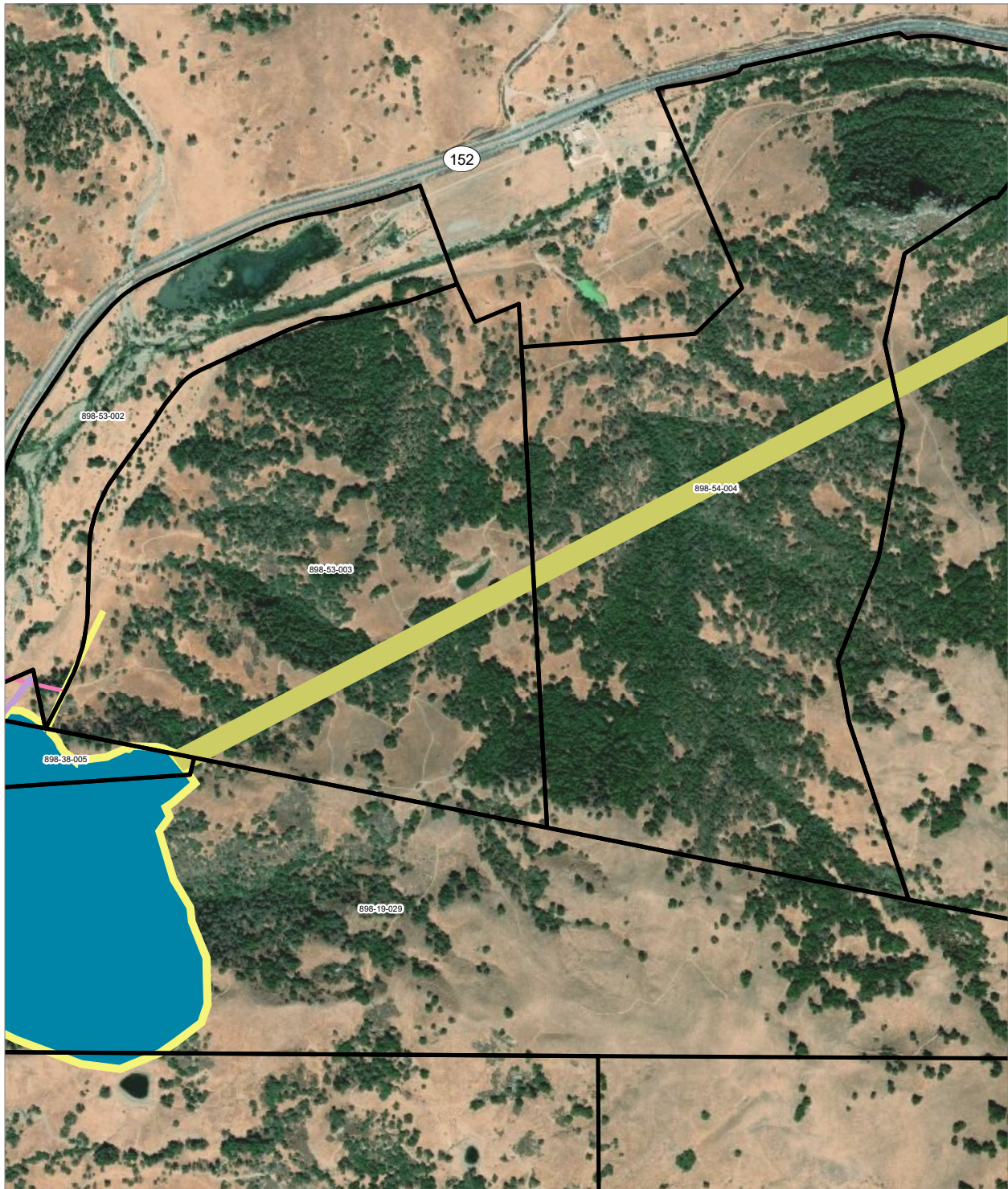
PRELIMINARY DRAFT/SUBJECT TO CHANGE - HSR ALIGNMENT IS NOT DETERMINED  
 SOURCE: ESRI, 2019; Santa Clara County, 2016; San Mateo County, 2016, San Francisco County, 2016



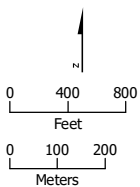
- HSR Right-of-Way
- Other Right-of-Way
- HSR Permanent Easement
- Permanent Utility Easement
- Temporary Construction Easement
- Temporary Utility Easement
- Parcel (APN Displayed)

**Alternative 3**





PRELIMINARY DRAFT/SUBJECT TO CHANGE - HSR ALIGNMENT IS NOT DETERMINED  
 SOURCE: ESRI, 2019; Santa Clara County, 2016; San Mateo County, 2016; San Francisco County, 2016



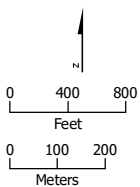
- HSR Right-of-Way
- HSR Permanent Easement
- Permanent Utility Easement
- Temporary Construction Easement
- Temporary Utility Easement
- Parcel (APN Displayed)

**Alternative 3**



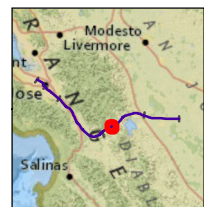


PRELIMINARY DRAFT/SUBJECT TO CHANGE - HSR ALIGNMENT IS NOT DETERMINED  
 SOURCE: ESRI, 2019; Santa Clara County, 2016; San Mateo County, 2016; San Francisco County, 2016



- HSR Permanent Easement
- Parcel (APN Displayed)

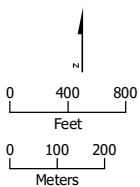
**Alternative 3**







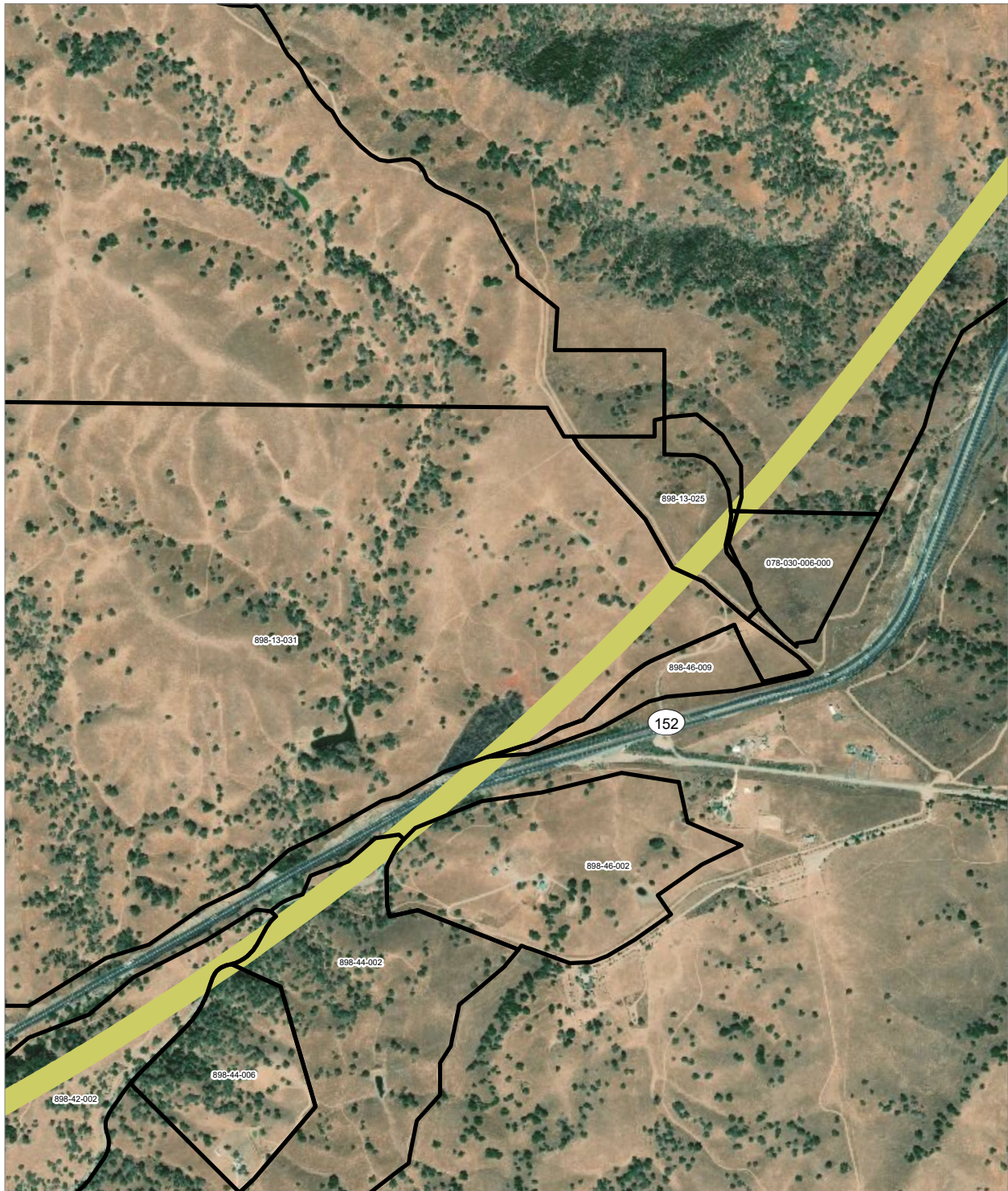
PRELIMINARY DRAFT/SUBJECT TO CHANGE - HSR ALIGNMENT IS NOT DETERMINED  
 SOURCE: ESRI, 2019; Santa Clara County, 2016; San Mateo County, 2016; San Francisco County, 2016



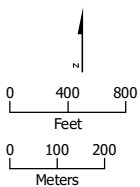
- HSR Permanent Easement
- Parcel (APN Displayed)

**Alternative 3**





PRELIMINARY DRAFT/SUBJECT TO CHANGE - HSR ALIGNMENT IS NOT DETERMINED  
 SOURCE: ESRI, 2019; Santa Clara County, 2016; San Mateo County, 2016; San Francisco County, 2016



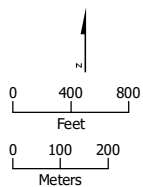
- HSR Permanent Easement
- Parcel (APN Displayed)

**Alternative 3**



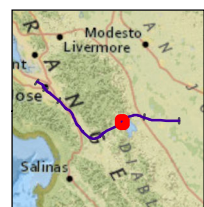


PRELIMINARY DRAFT/SUBJECT TO CHANGE - HSR ALIGNMENT IS NOT DETERMINED  
 SOURCE: ESRI, 2019; Santa Clara County, 2016; San Mateo County, 2016, San Francisco County, 2016



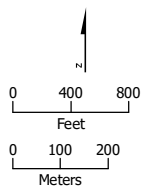
- HSR Permanent Easement
- Parcel (APN Displayed)

**Alternative 3**





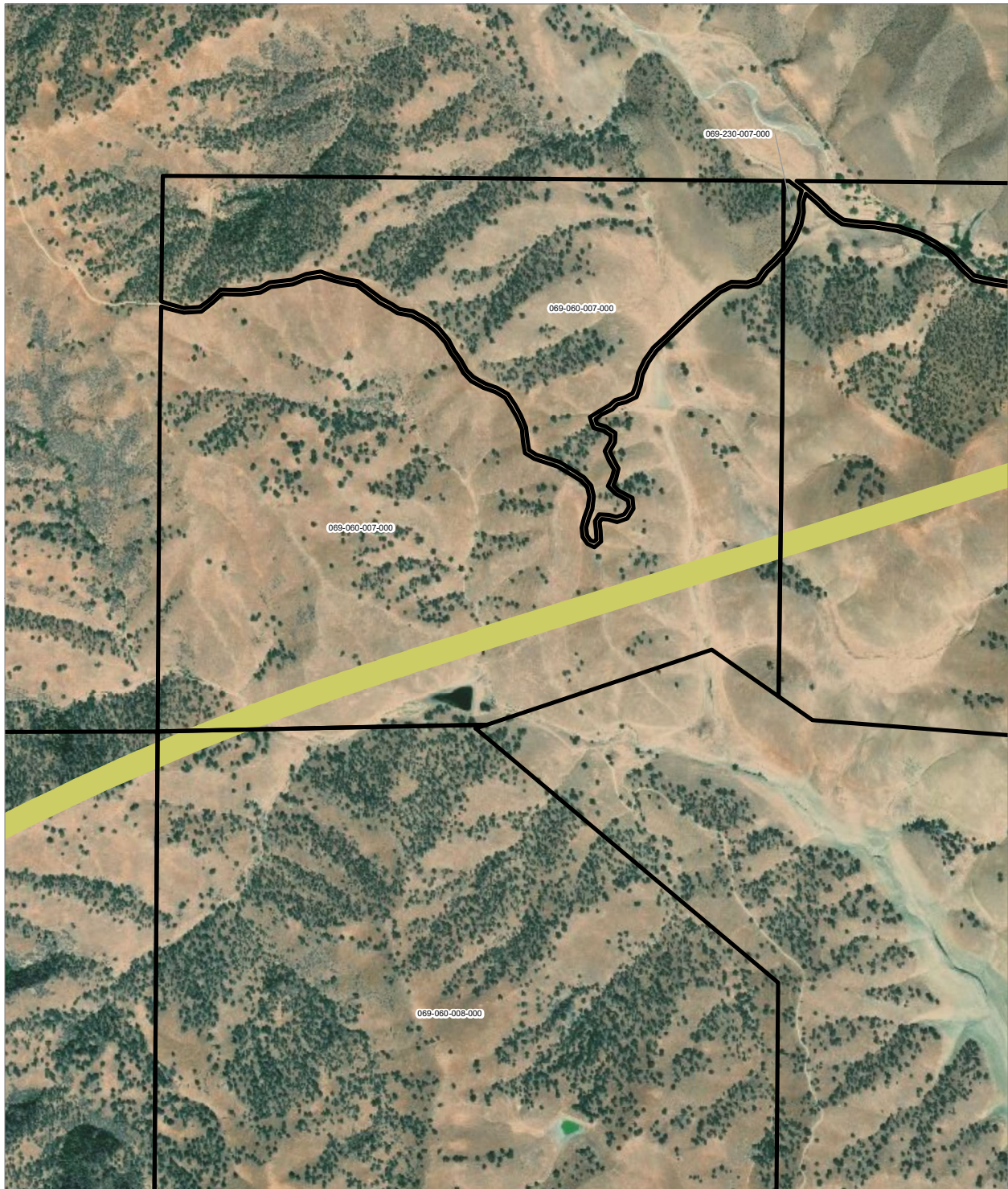
PRELIMINARY DRAFT/SUBJECT TO CHANGE - HSR ALIGNMENT IS NOT DETERMINED  
SOURCE: ESRI, 2019; Santa Clara County, 2016; San Mateo County, 2016, San Francisco County, 2016



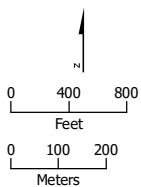
- HSR Permanent Easement
- Parcel (APN Displayed)

### Alternative 3





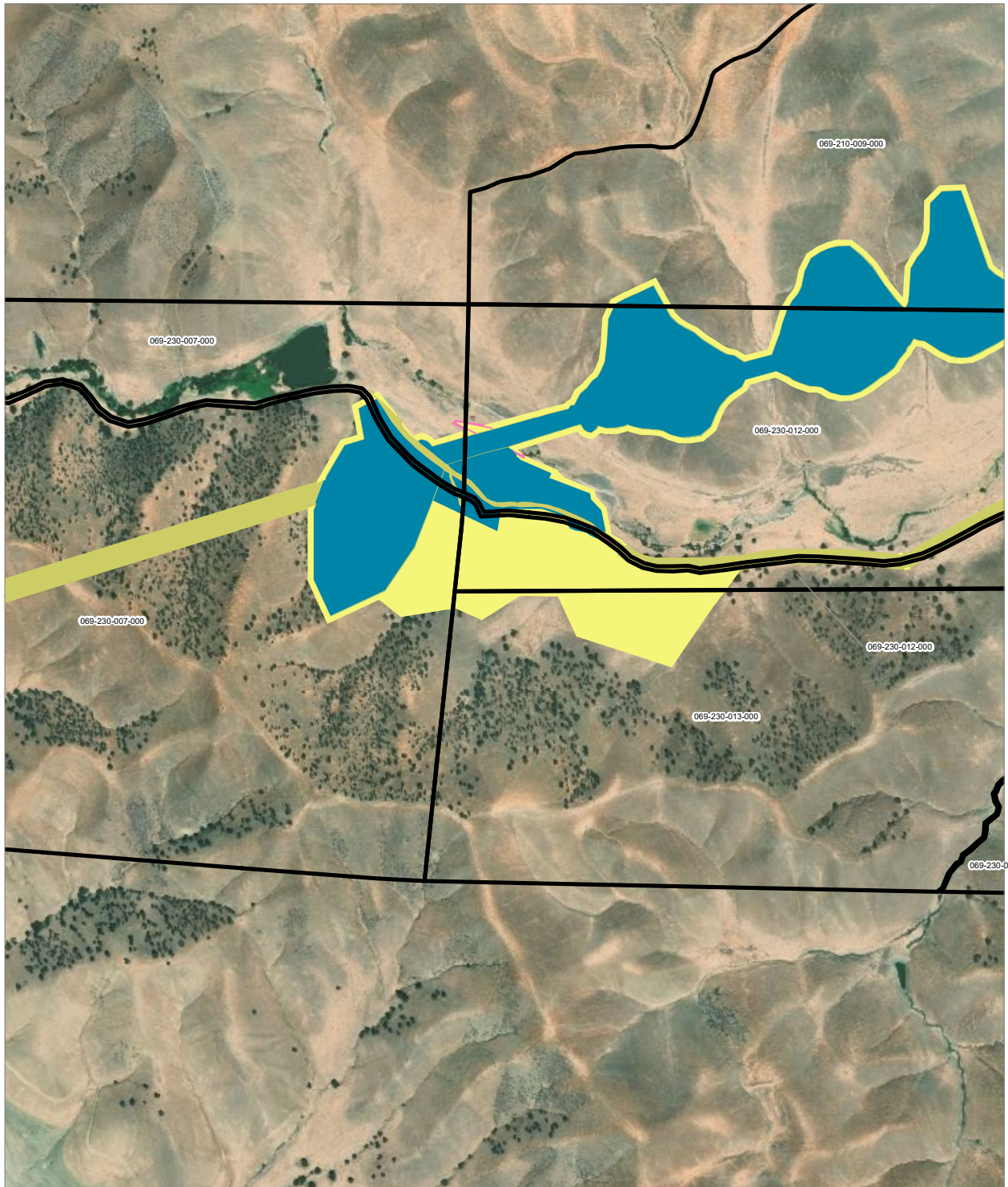
PRELIMINARY DRAFT/SUBJECT TO CHANGE - HSR ALIGNMENT IS NOT DETERMINED  
 SOURCE: ESRI, 2019; Santa Clara County, 2016; San Mateo County, 2016, San Francisco County, 2016



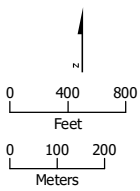
- HSR Permanent Easement
- Parcel (APN Displayed)

**Alternative 3**





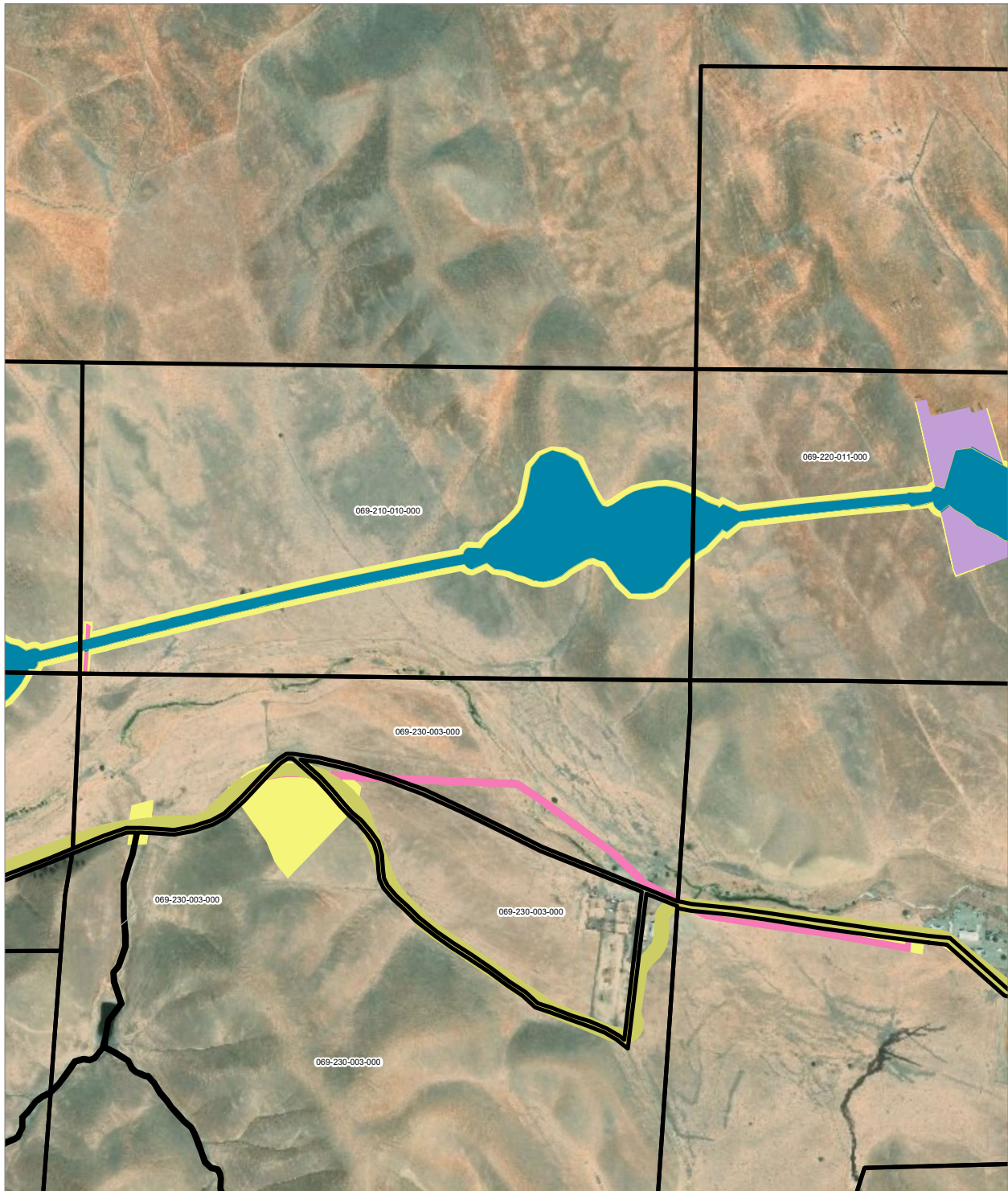
PRELIMINARY DRAFT/SUBJECT TO CHANGE - HSR ALIGNMENT IS NOT DETERMINED  
 SOURCE: ESRI, 2019; Santa Clara County, 2016; San Mateo County, 2016; San Francisco County, 2016



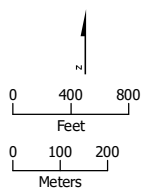
- HSR Right-of-Way
- HSR Permanent Easement
- Permanent Utility Easement
- Temporary Construction Easement
- Parcel (APN Displayed)

**Alternative 3**





PRELIMINARY DRAFT/SUBJECT TO CHANGE - HSR ALIGNMENT IS NOT DETERMINED  
 SOURCE: ESRI, 2019; Santa Clara County, 2016; San Mateo County, 2016, San Francisco County, 2016



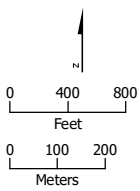
- HSR Right-of-Way
- HSR Permanent Easement
- Permanent Utility Easement
- Temporary Construction Easement
- Temporary Utility Easement
- Parcel (APN Displayed)

**Alternative 3**





PRELIMINARY DRAFT/SUBJECT TO CHANGE - HSR ALIGNMENT IS NOT DETERMINED  
 SOURCE: ESRI, 2019; Santa Clara County, 2016; San Mateo County, 2016, San Francisco County, 2016

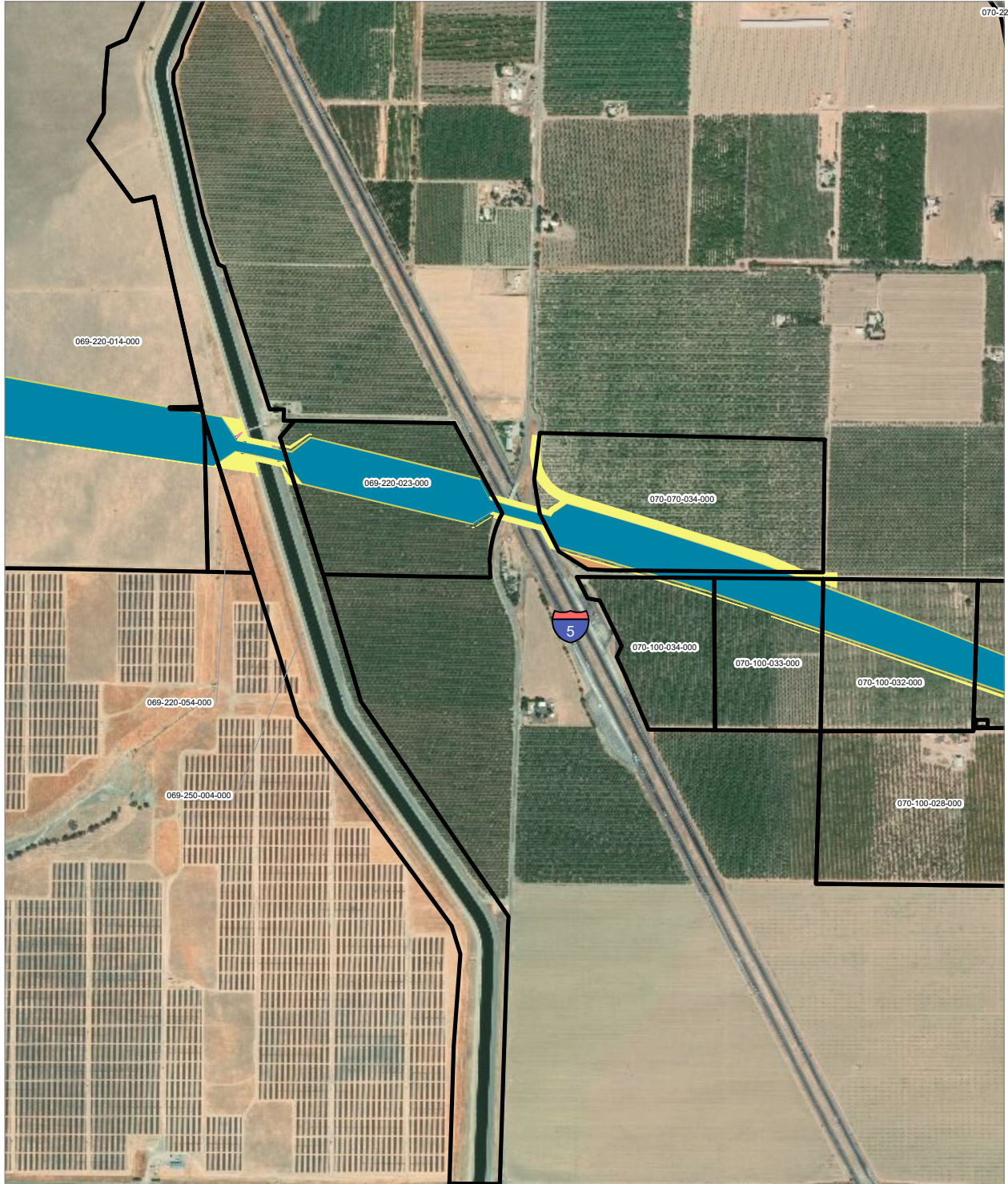


- HSR Right-of-Way
- Temporary Construction Easement
- HSR Permanent Easement
- Temporary Utility Easement
- Permanent Utility Easement
- Non-Viable Remnant Parcel
- Parcel (APN Displayed)

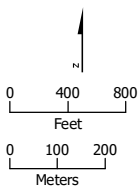
**Alternative 3**







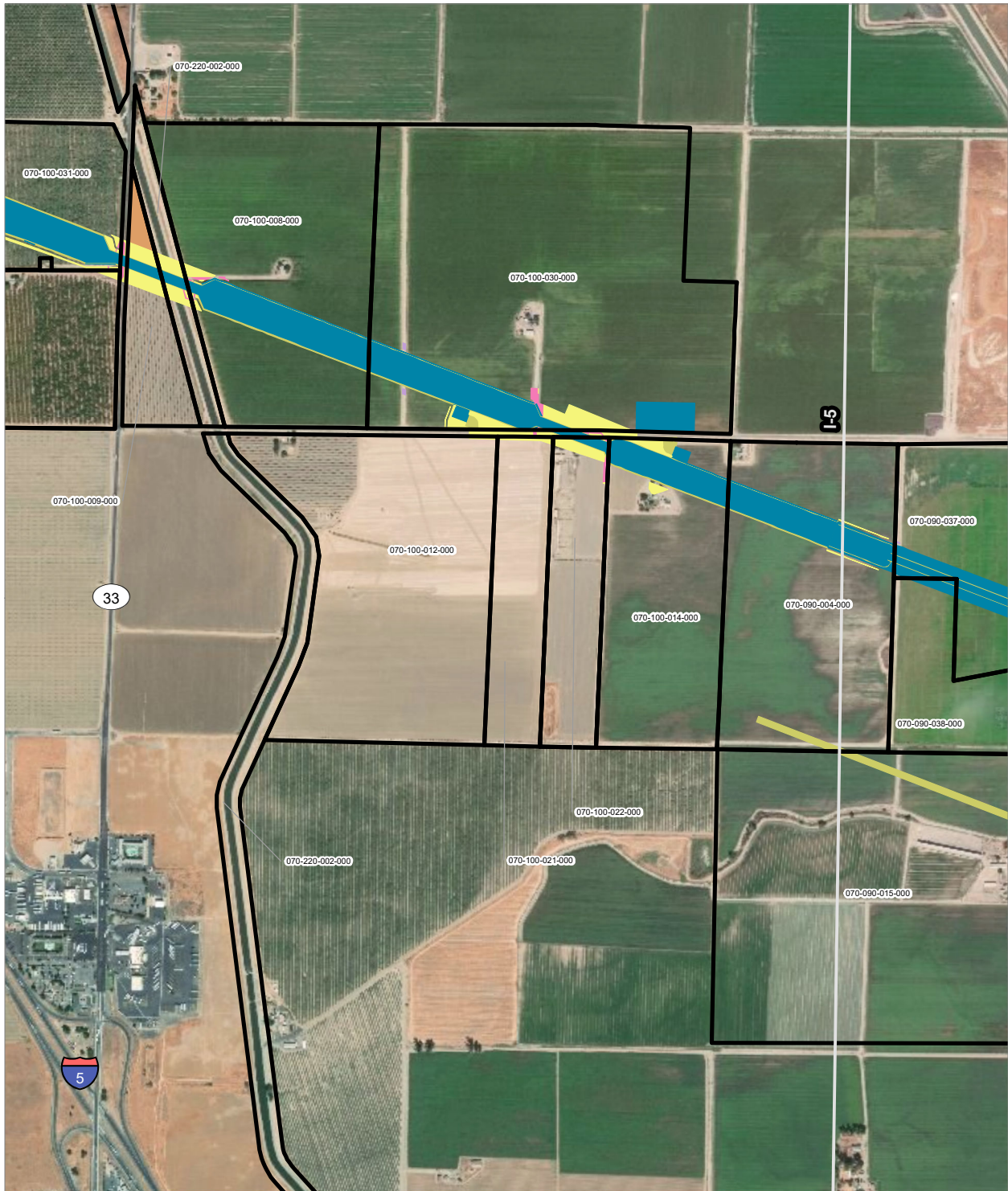
PRELIMINARY DRAFT/SUBJECT TO CHANGE - HSR ALIGNMENT IS NOT DETERMINED  
 SOURCE: ESRI, 2019; Santa Clara County, 2016; San Mateo County, 2016; San Francisco County, 2016



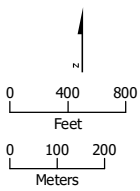
- HSR Right-of-Way
- HSR Permanent Easement
- Permanent Utility Easement
- Temporary Construction Easement
- Temporary Utility Easement
- Non-Viable Remnant Parcel
- Parcel (APN Displayed)

**Alternative 3**





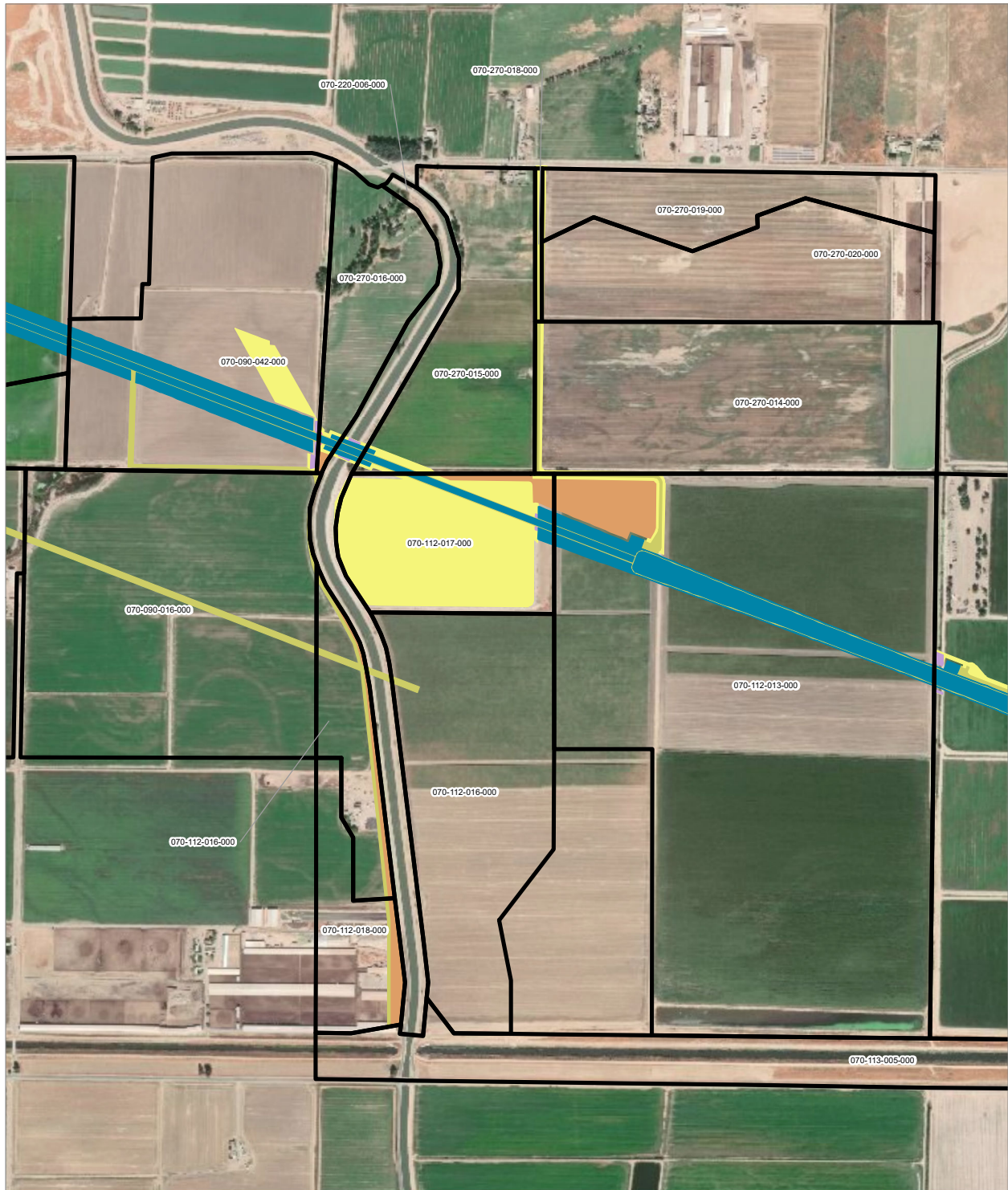
PRELIMINARY DRAFT/SUBJECT TO CHANGE - HSR ALIGNMENT IS NOT DETERMINED  
 SOURCE: ESRI, 2019; Santa Clara County, 2016; San Mateo County, 2016, San Francisco County, 2016



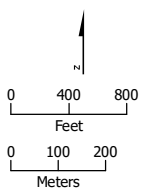
- HSR Right-of-Way
- Temporary Construction Easement
- HSR Permanent Easement
- Temporary Utility Easement
- Permanent Utility Easement
- Non-Viable Remnant Parcel
- Parcel (APN Displayed)

**Alternative 3**





PRELIMINARY DRAFT/SUBJECT TO CHANGE - HSR ALIGNMENT IS NOT DETERMINED  
 SOURCE: ESRI, 2019; Santa Clara County, 2016; San Mateo County, 2016, San Francisco County, 2016



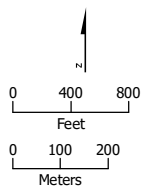
- HSR Right-of-Way
- HSR Permanent Easement
- Temporary Construction Easement
- Permanent Utility Easement
- Temporary Utility Easement
- Non-Viable Remnant Parcel
- Parcel (APN Displayed)

**Alternative 3**





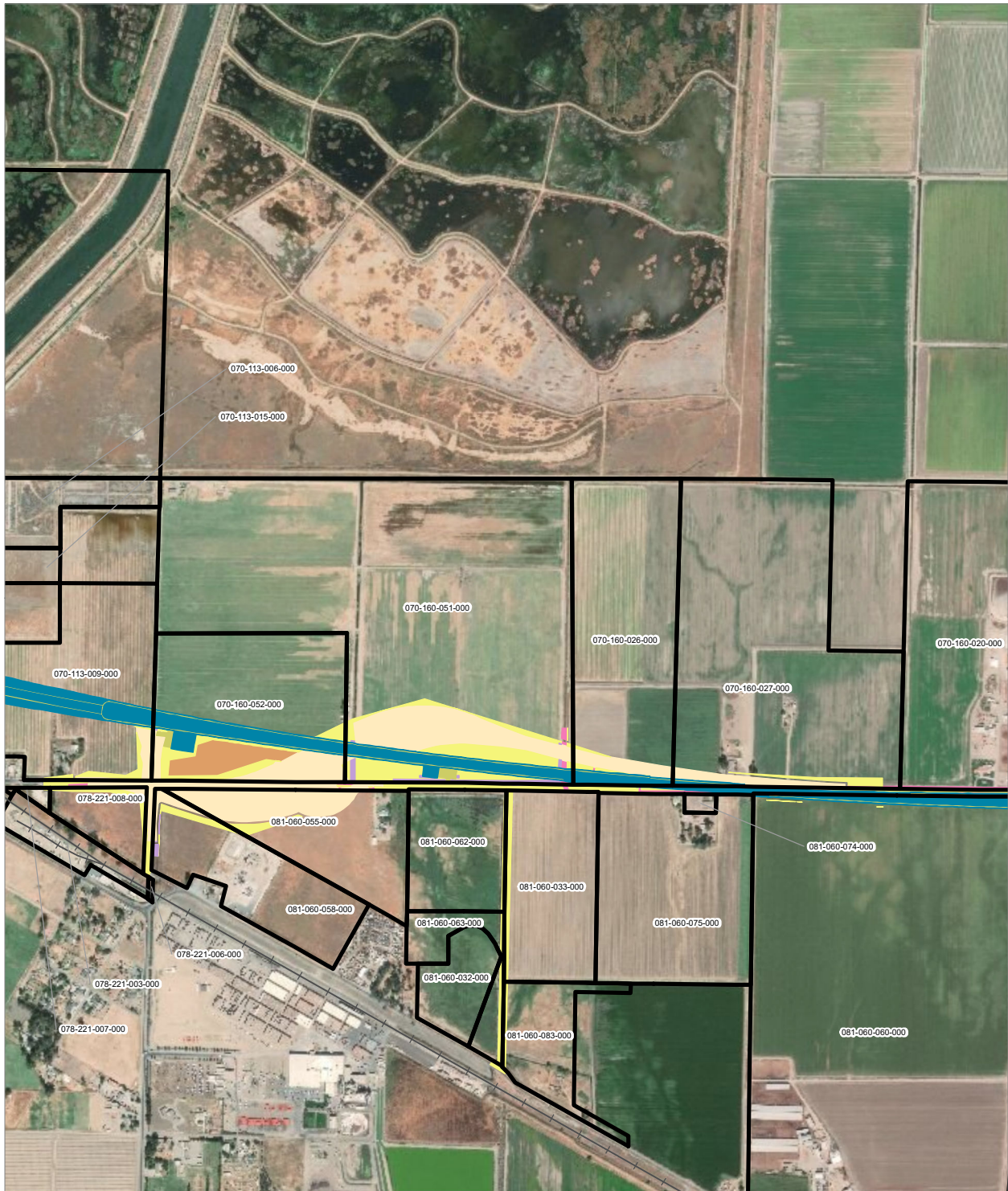
PRELIMINARY DRAFT/SUBJECT TO CHANGE - HSR ALIGNMENT IS NOT DETERMINED  
 SOURCE: ESRI, 2019; Santa Clara County, 2016; San Mateo County, 2016, San Francisco County, 2016



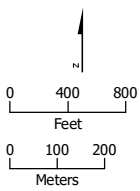
- HSR Right-of-Way
- Temporary Construction Easement
- HSR Permanent Easement
- Temporary Utility Easement
- Permanent Utility Easement
- Non-Viable Remnant Parcel
- Parcel (APN Displayed)

**Alternative 3**





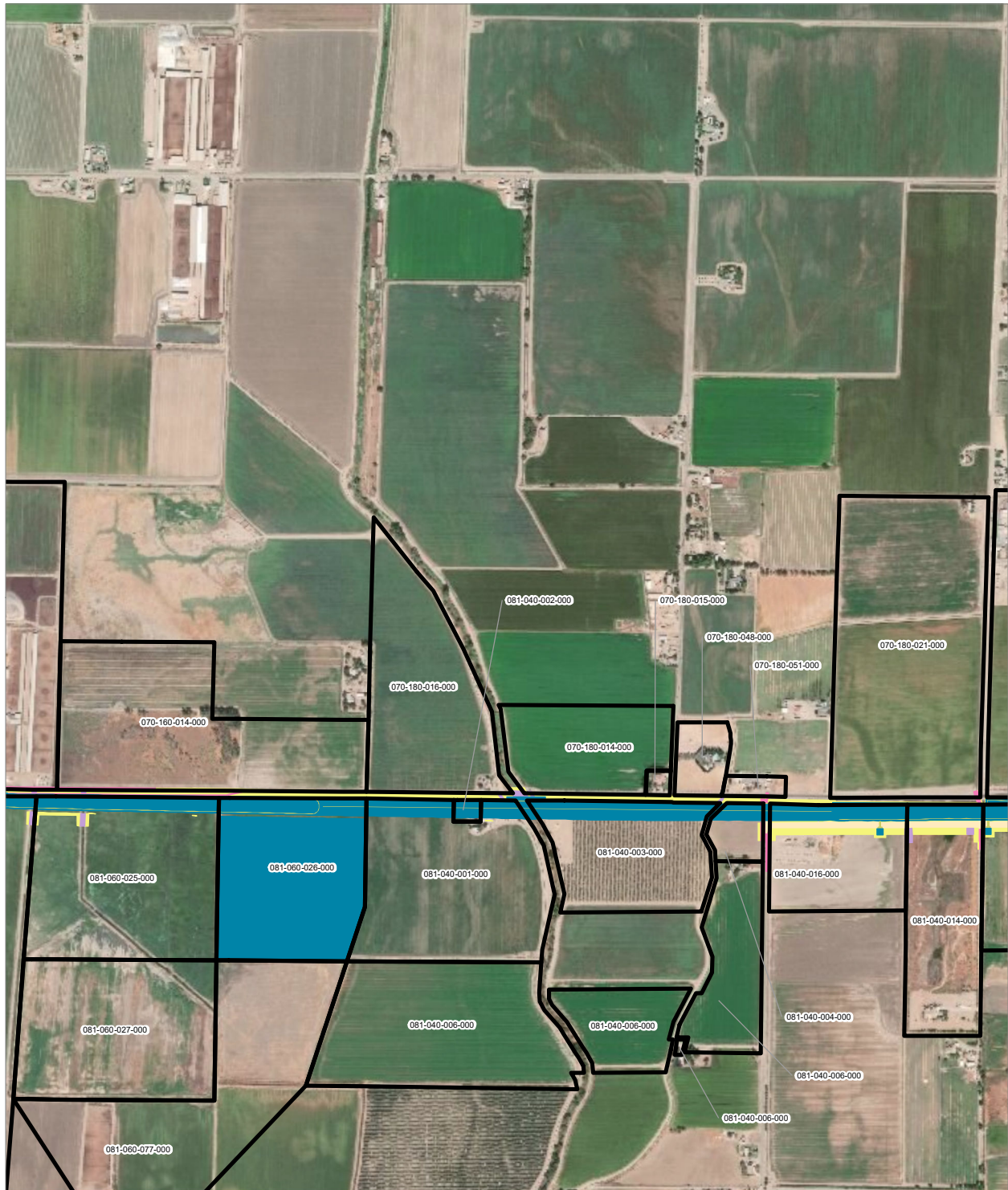
PRELIMINARY DRAFT/SUBJECT TO CHANGE - HSR ALIGNMENT IS NOT DETERMINED  
 SOURCE: ESRI, 2019; Santa Clara County, 2016; San Mateo County, 2016; San Francisco County, 2016



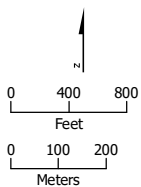
- HSR Right-of-Way
- Roadway Right-of-Way
- HSR Permanent Easement
- Permanent Utility Easement
- Temporary Construction Easement
- Temporary Utility Easement
- Non-Viable Remnant Parcel
- Parcel (APN Displayed)

**Alternative 3**



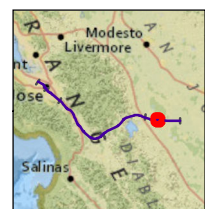


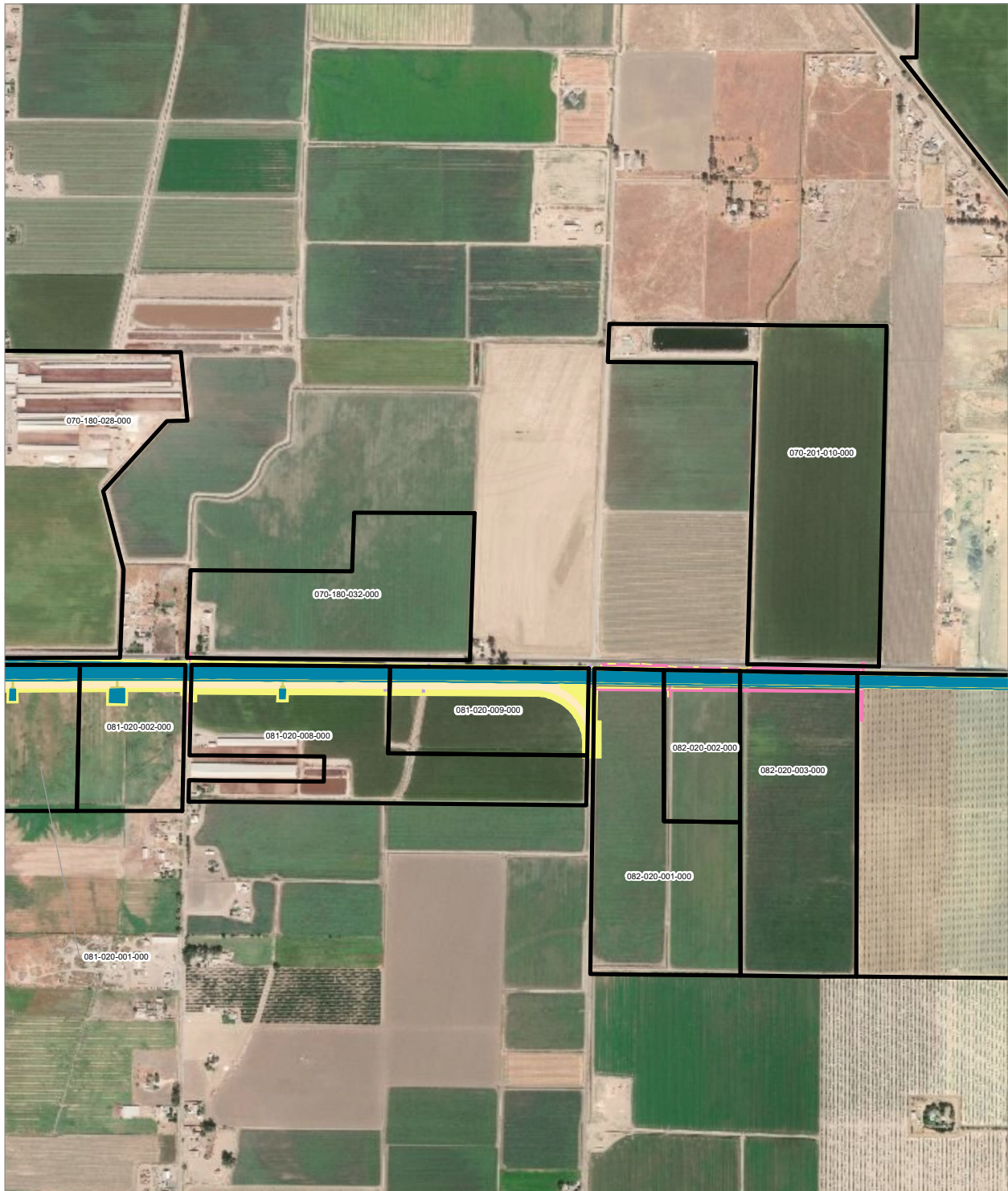
PRELIMINARY DRAFT/SUBJECT TO CHANGE - HSR ALIGNMENT IS NOT DETERMINED  
 SOURCE: ESRI, 2019; Santa Clara County, 2016; San Mateo County, 2016; San Francisco County, 2016



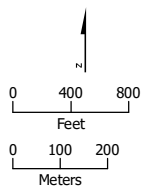
- HSR Right-of-Way
- Roadway Right-of-Way
- HSR Permanent Easement
- Permanent Utility Easement
- Temporary Construction Easement
- Temporary Utility Easement
- Non-Viable Remnant Parcel
- Parcel (APN Displayed)

**Alternative 3**





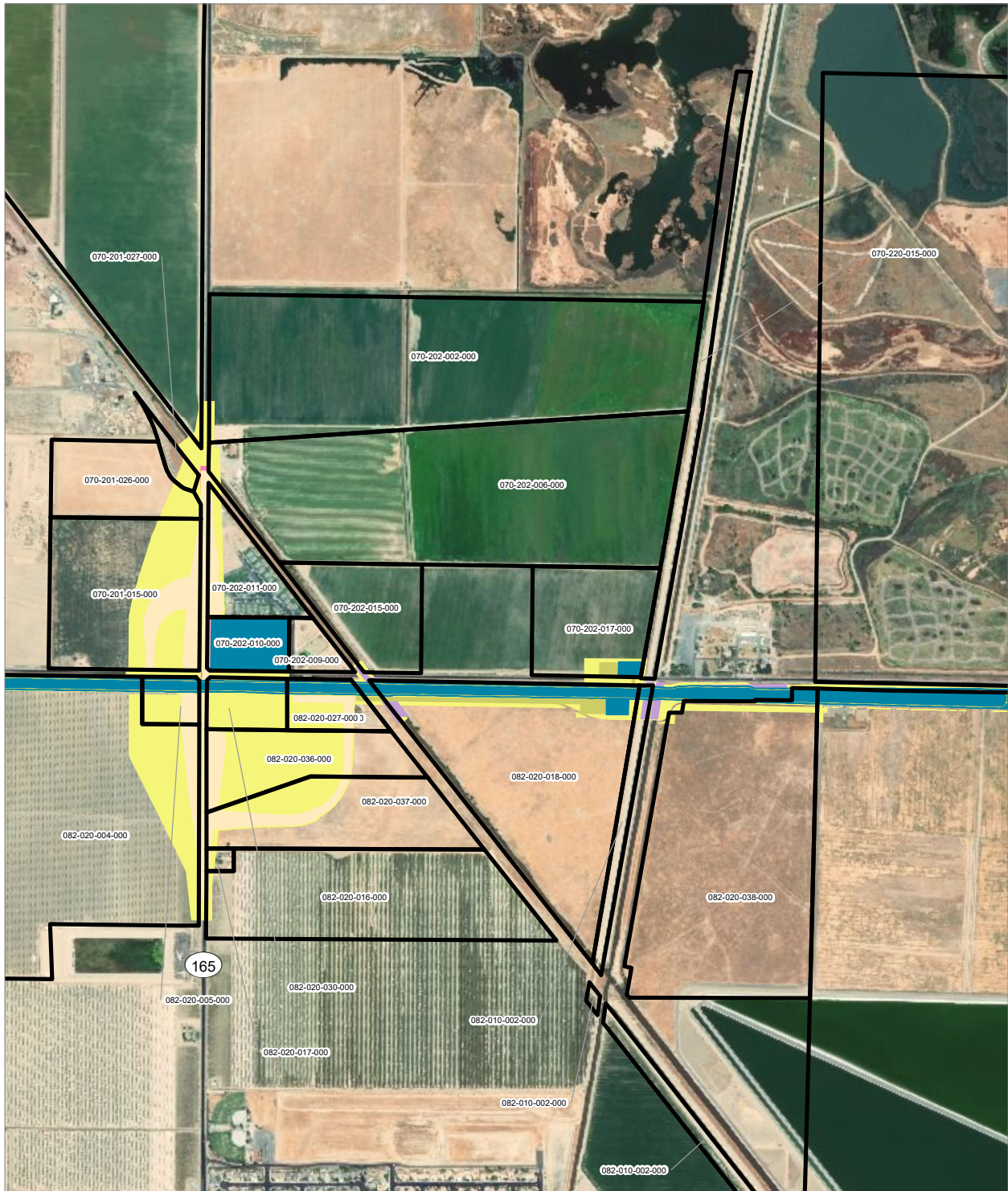
PRELIMINARY DRAFT/SUBJECT TO CHANGE - HSR ALIGNMENT IS NOT DETERMINED  
 SOURCE: ESRI, 2019; Santa Clara County, 2016; San Mateo County, 2016, San Francisco County, 2016



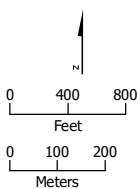
- HSR Right-of-Way
- Roadway Right-of-Way
- HSR Permanent Easement
- Permanent Utility Easement
- Temporary Construction Easement
- Temporary Utility Easement
- Non-Viable Remnant Parcel
- Parcel (APN Displayed)

**Alternative 3**





PRELIMINARY DRAFT/SUBJECT TO CHANGE - HSR ALIGNMENT IS NOT DETERMINED  
 SOURCE: ESRI, 2019; Santa Clara County, 2016; San Mateo County, 2016, San Francisco County, 2016



- HSR Right-of-Way
- Roadway Right-of-Way
- HSR Permanent Easement
- Permanent Utility Easement
- Temporary Construction Easement
- Temporary Utility Easement
- Non-Viable Remnant Parcel
- Parcel (APN Displayed)

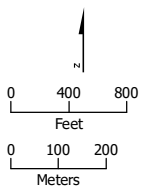
**Alternative 3**







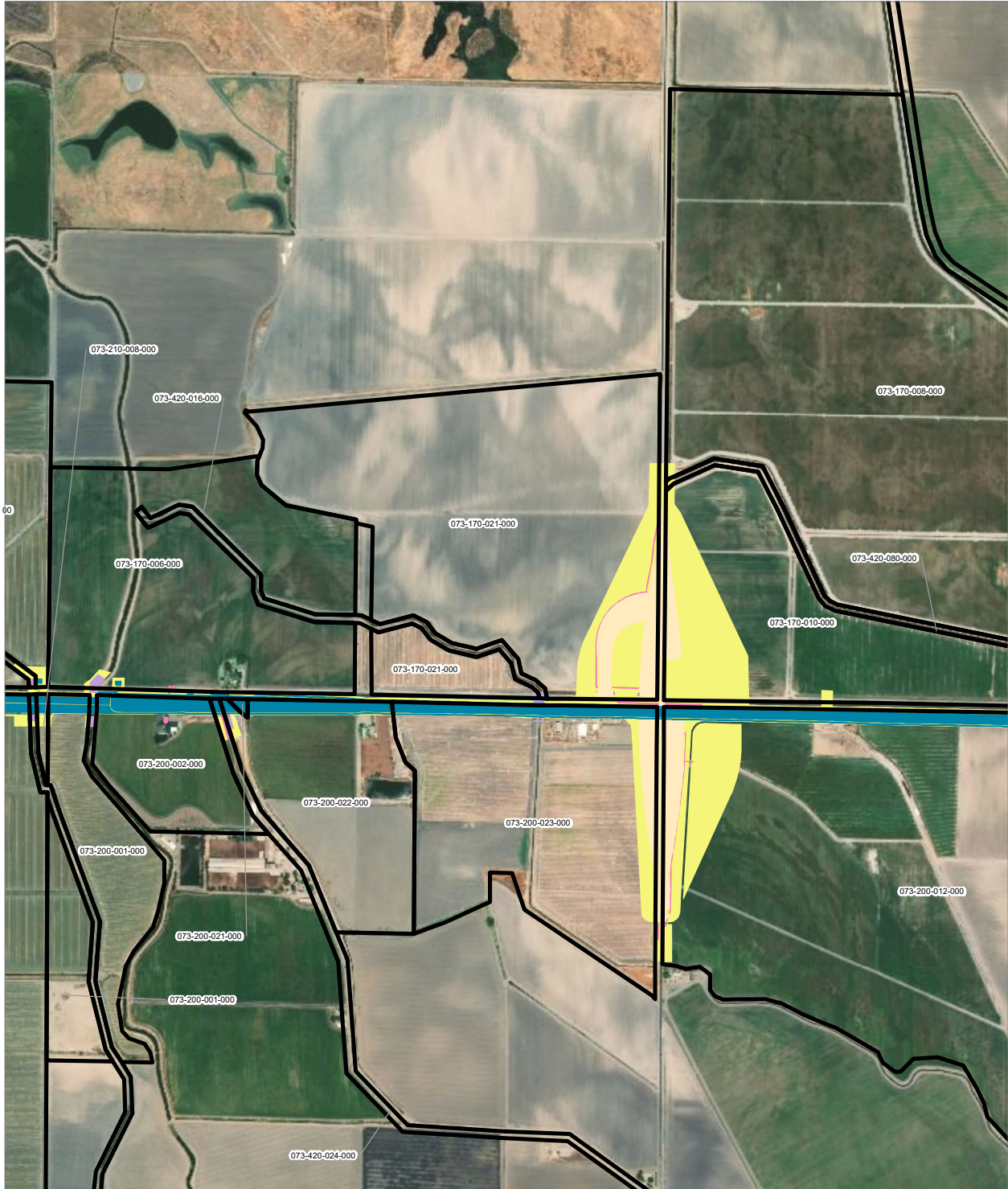
PRELIMINARY DRAFT/SUBJECT TO CHANGE - HSR ALIGNMENT IS NOT DETERMINED  
 SOURCE: ESRI, 2019; Santa Clara County, 2016; San Mateo County, 2016; San Francisco County, 2016



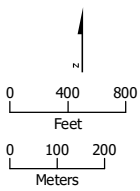
- HSR Right-of-Way
- Roadway Right-of-Way
- HSR Permanent Easement
- Permanent Utility Easement
- Temporary Construction Easement
- Temporary Utility Easement
- Non-Viable Remnant Parcel
- Parcel (APN Displayed)

**Alternative 3**



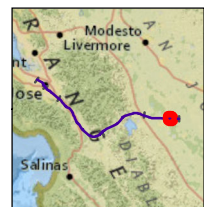


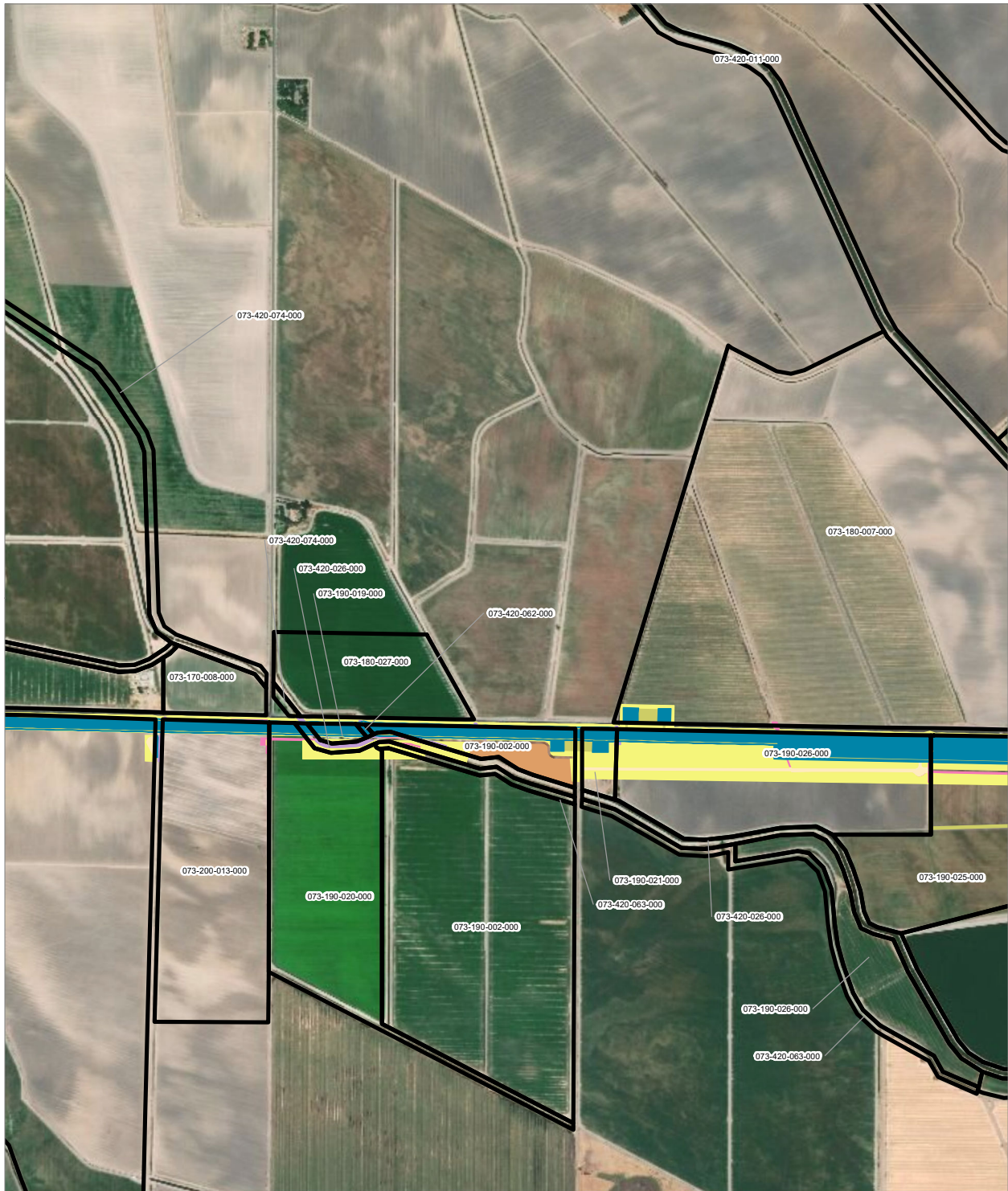
PRELIMINARY DRAFT/SUBJECT TO CHANGE - HSR ALIGNMENT IS NOT DETERMINED  
 SOURCE: ESRI, 2019; Santa Clara County, 2016; San Mateo County, 2016, San Francisco County, 2016



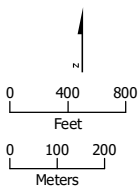
- HSR Right-of-Way
- Roadway Right-of-Way
- HSR Permanent Easement
- Permanent Utility Easement
- Temporary Construction Easement
- Temporary Utility Easement
- Non-Viable Remnant Parcel
- Parcel (APN Displayed)

**Alternative 3**



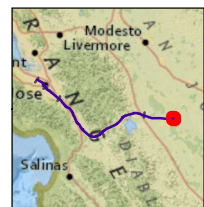


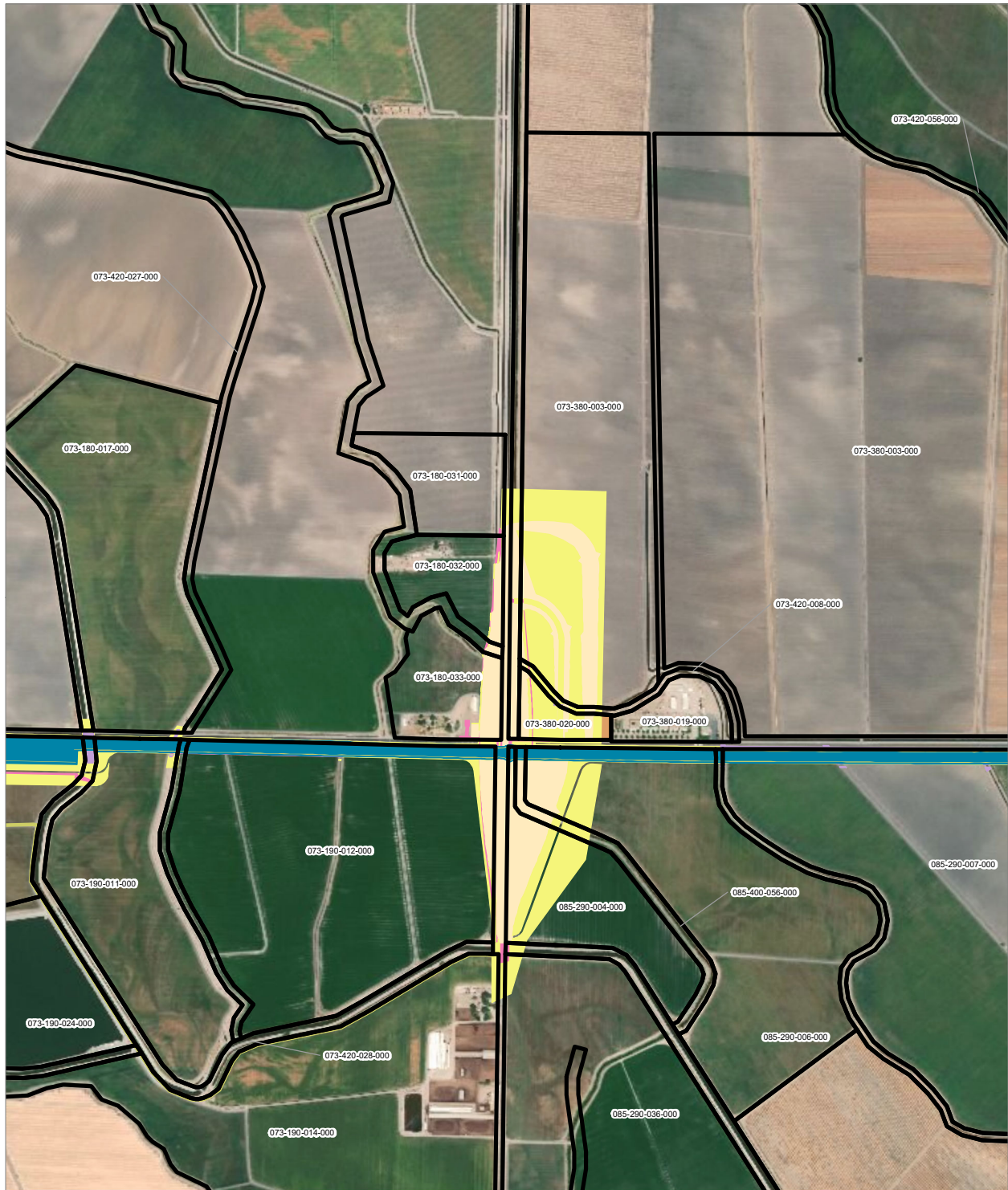
PRELIMINARY DRAFT/SUBJECT TO CHANGE - HSR ALIGNMENT IS NOT DETERMINED  
 SOURCE: ESRI, 2019; Santa Clara County, 2016; San Mateo County, 2016; San Francisco County, 2016



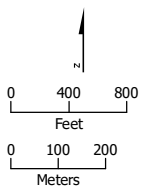
- HSR Right-of-Way
- Roadway Right-of-Way
- HSR Permanent Easement
- Permanent Utility Easement
- Temporary Construction Easement
- Temporary Utility Easement
- Non-Viable Remnant Parcel
- Parcel (APN Displayed)

**Alternative 3**



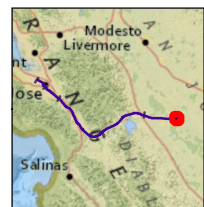


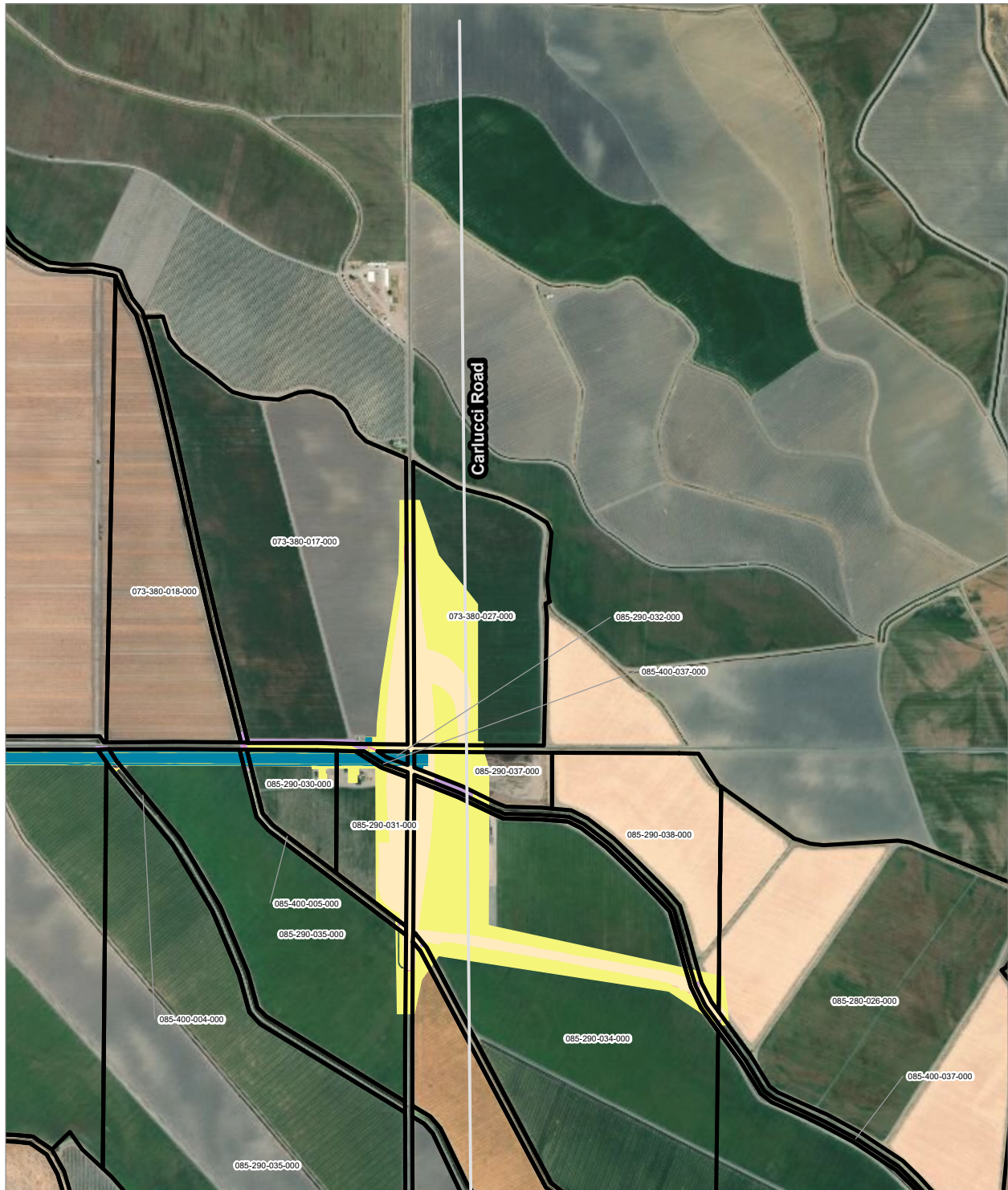
PRELIMINARY DRAFT/SUBJECT TO CHANGE - HSR ALIGNMENT IS NOT DETERMINED  
 SOURCE: ESRI, 2019; Santa Clara County, 2016; San Mateo County, 2016; San Francisco County, 2016



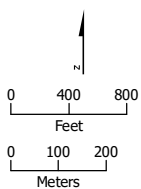
- HSR Right-of-Way
- Roadway Right-of-Way
- HSR Permanent Easement
- Permanent Utility Easement
- Temporary Construction Easement
- Temporary Utility Easement
- Non-Viable Remnant Parcel
- Parcel (APN Displayed)

**Alternative 3**





PRELIMINARY DRAFT/SUBJECT TO CHANGE - HSR ALIGNMENT IS NOT DETERMINED  
 SOURCE: ESRI, 2019; Santa Clara County, 2016; San Mateo County, 2016, San Francisco County, 2016



- HSR Right-of-Way
- Roadway Right-of-Way
- HSR Permanent Easement
- Permanent Utility Easement
- Temporary Construction Easement
- Temporary Utility Easement
- Non-Viable Remnant Parcel
- Parcel (APN Displayed)

**Alternative 3**

