

California High-Speed Rail Authority

Burbank to Los Angeles *Project Section*

Final Environmental Impact Report/Environmental Impact Statement

Appendix 3.12-A: Affected Environment Figures

September 2021



The environmental review, consultation, and other actions required by applicable Federal environmental laws for this project are being or have been carried out by the State of California pursuant to 23 U.S.C. 327 and a Memorandum of Understanding dated July 23, 2019, and executed by the Federal Railroad Administration and the State of California.

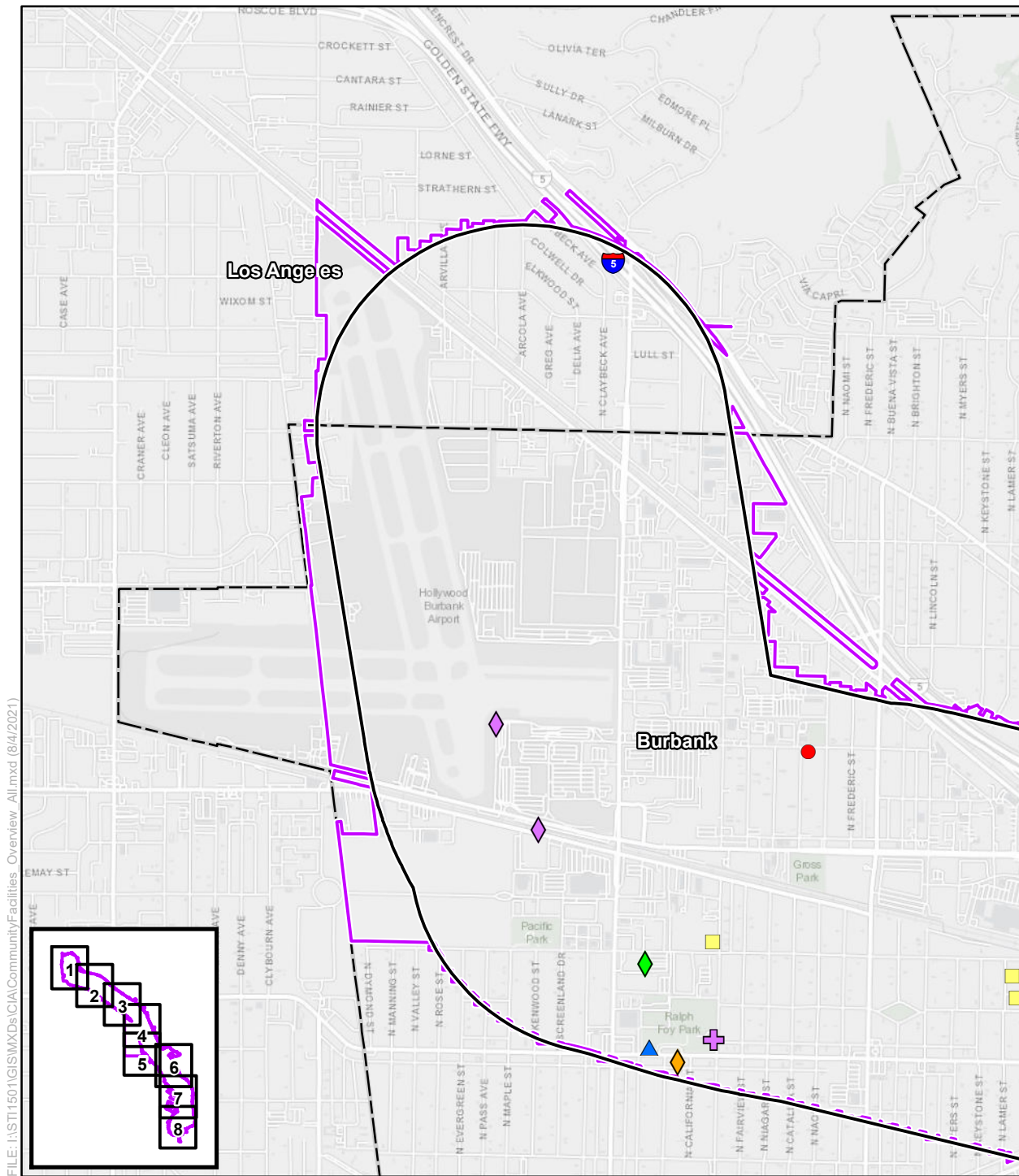
This page intentionally left blank

APPENDIX 3.12-A: FIGURES

This appendix contains detailed maps in support of the affected environment descriptions in Section 3.12, Socioeconomics and Communities. Specifically, this appendix contains the following figures:

- Figure 3.12-1: Community Facilities (8 sheets)
- Figure 3.12-2: School Districts (1 sheet)
- Figure 3.12-3: Bikeways (2 sheets)

This page intentionally left blank



FILE: I:\ST11501\GIS\MXDs\CA\CommunityFacilities_Overview_All.mxd (8/4/2021)

SOURCE: Esri (2018); CHSRA (6/2021); Los Angeles Geohub (2016); City of Glendale (2016); City of Burbank (2016)

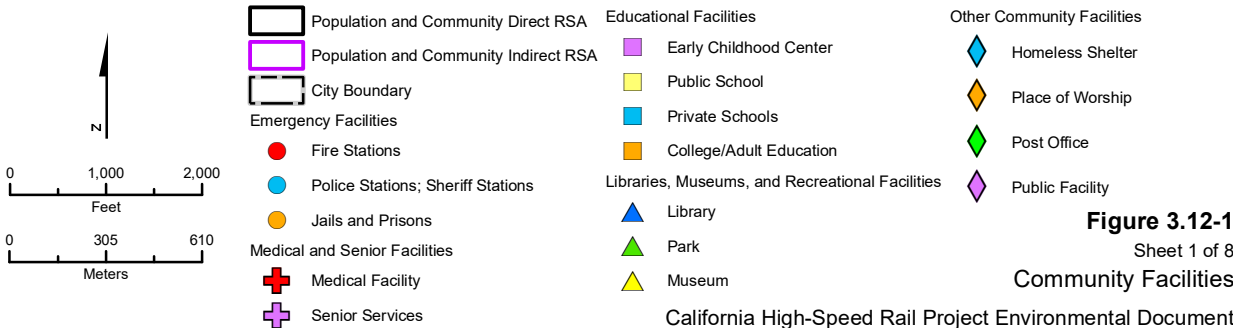
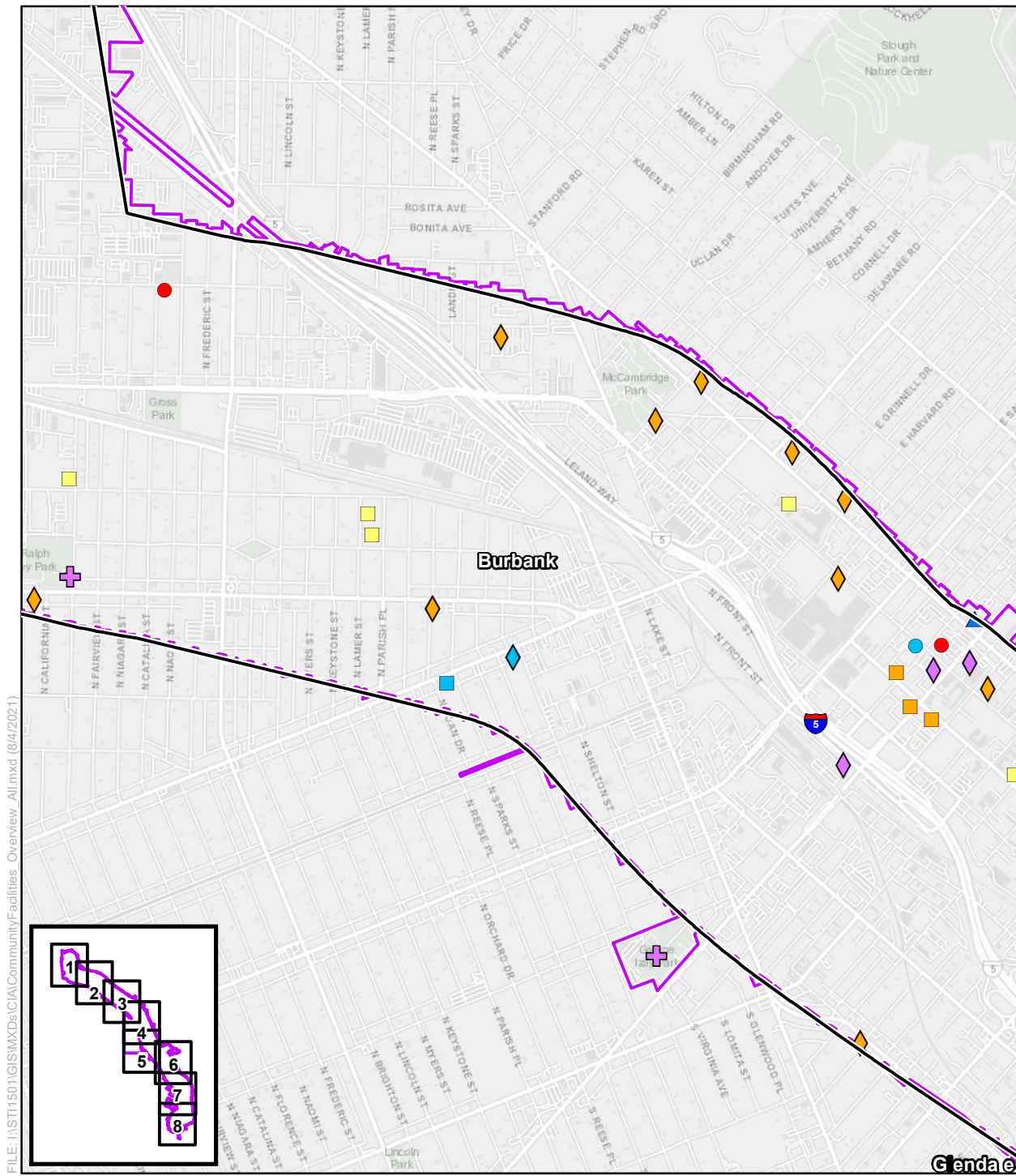


Figure 3.12-1
Sheet 1 of 8
Community Facilities



FILE: I:\ST11501\GIS\MXD\CIA\CommunityFacilities_Overview_Alt.mxd (8/4/2021)

SOURCE: Esri (2018); CHSRA (6/2021); Los Angeles Geohub (2016); City of Glendale (2016); City of Burbank (2016)

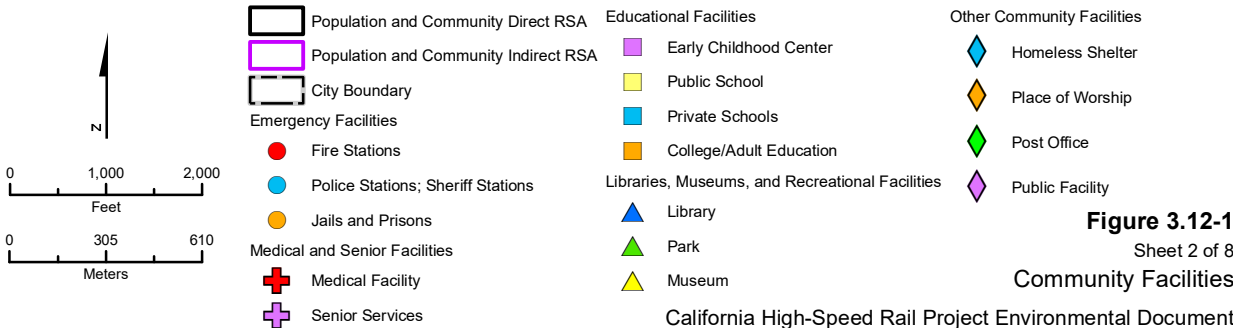
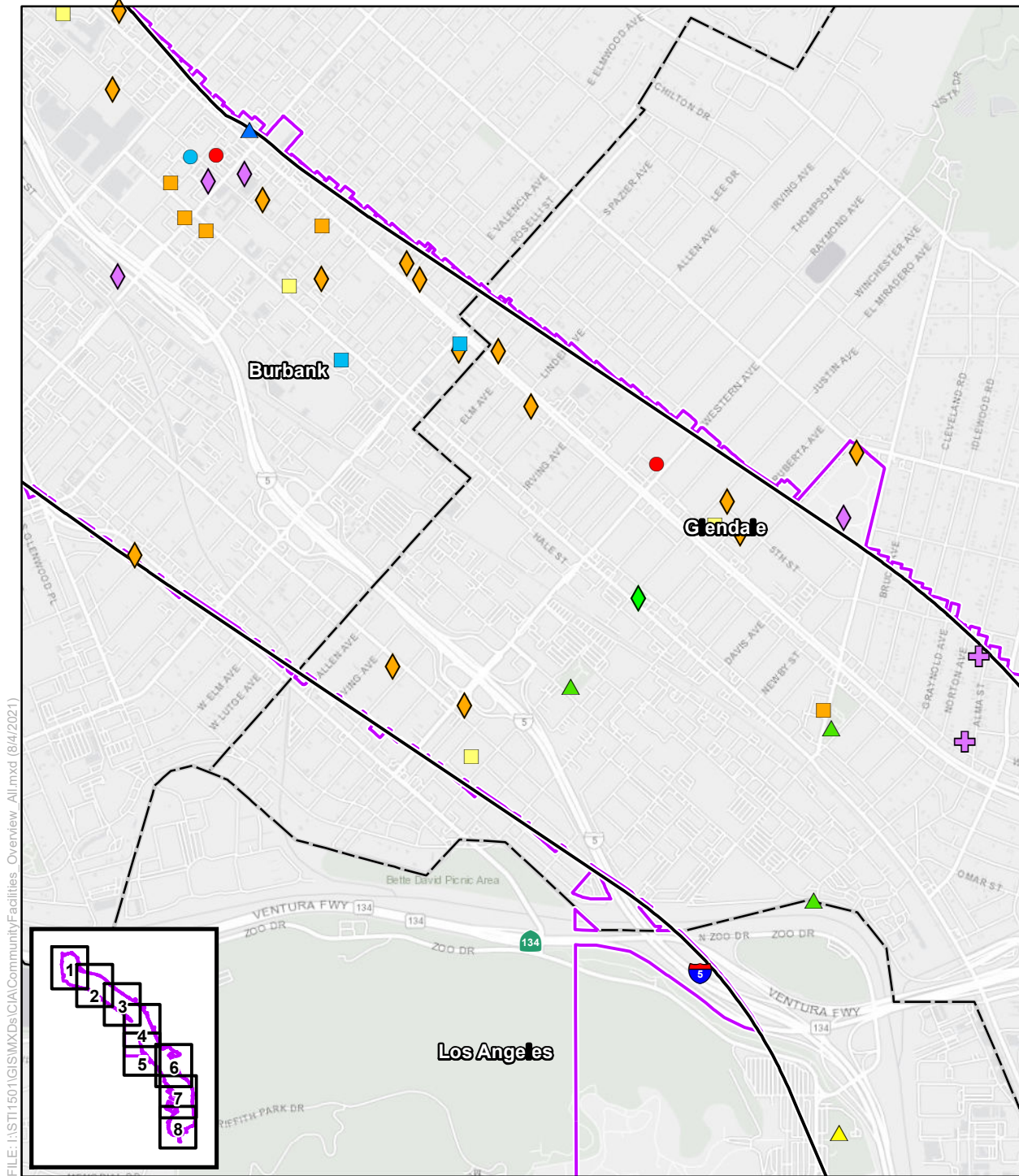


Figure 3.12-1
Sheet 2 of 8

Community Facilities

California High-Speed Rail Project Environmental Document



FILE: I:\STI1501\GIS\MXDs\CIA\CommunityFacilities_Overview_All.mxd (8/4/2021)

SOURCE: Esri (2018); CHSRA (6/2021); Los Angeles Geohub (2016); City of Glendale (2016); City of Burbank (2016)

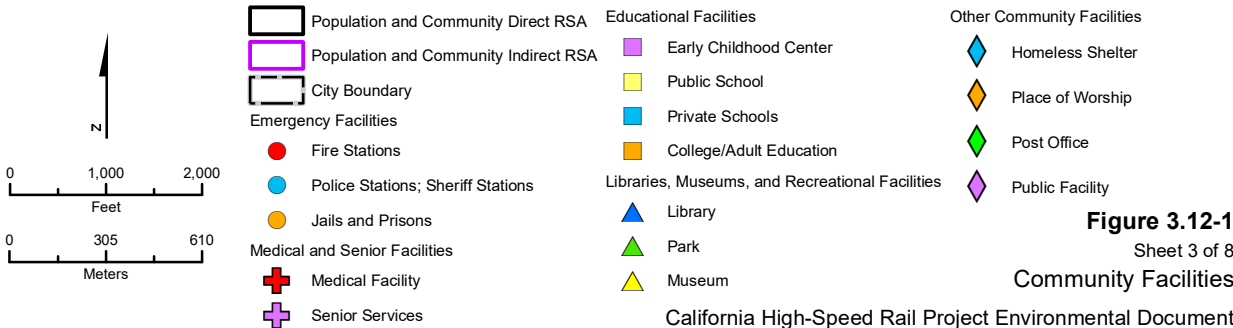
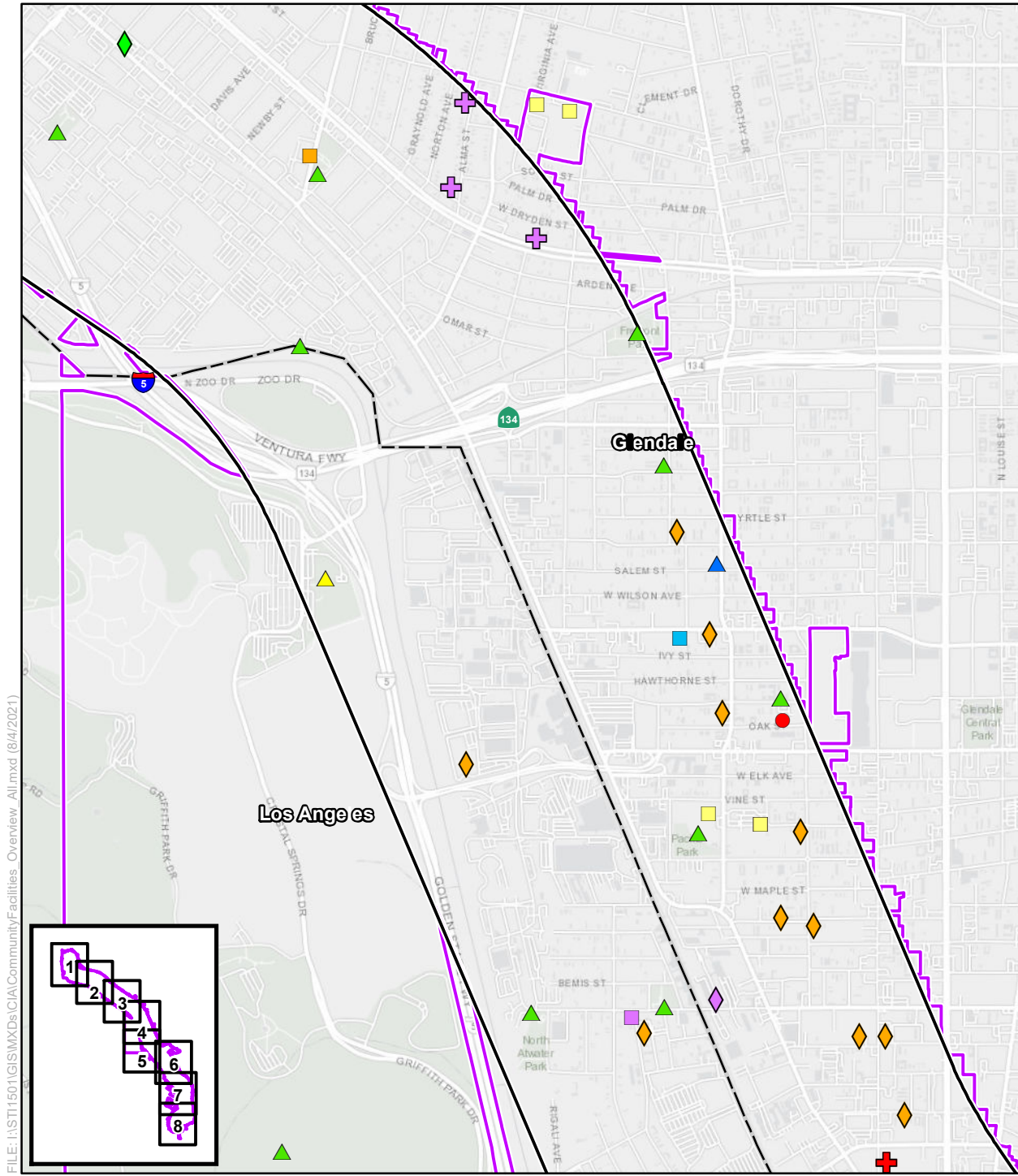


Figure 3.12-1
Sheet 3 of 8
Community Facilities



FILE: I:\STI1501\GIS\MXDs\CA\CommunityFacilities_Overview_All.mxd (8/4/2021)

SOURCE: Esri (2018); CHSRA (6/2021); Los Angeles Geohub (2016); City of Glendale (2016); City of Burbank (2016)

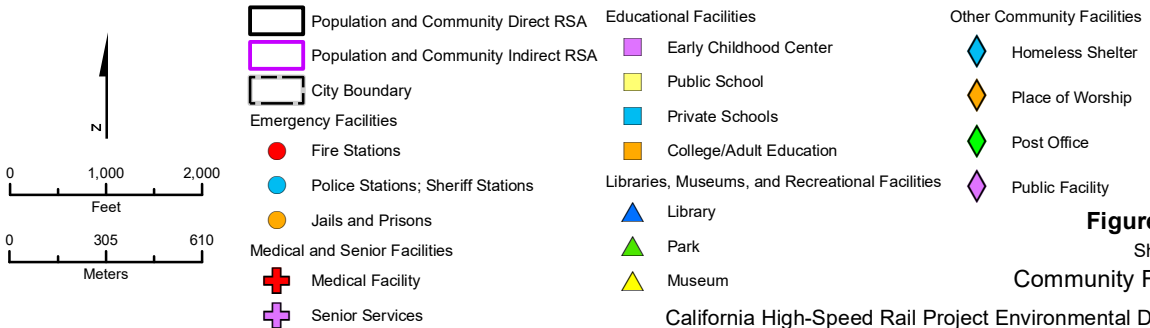
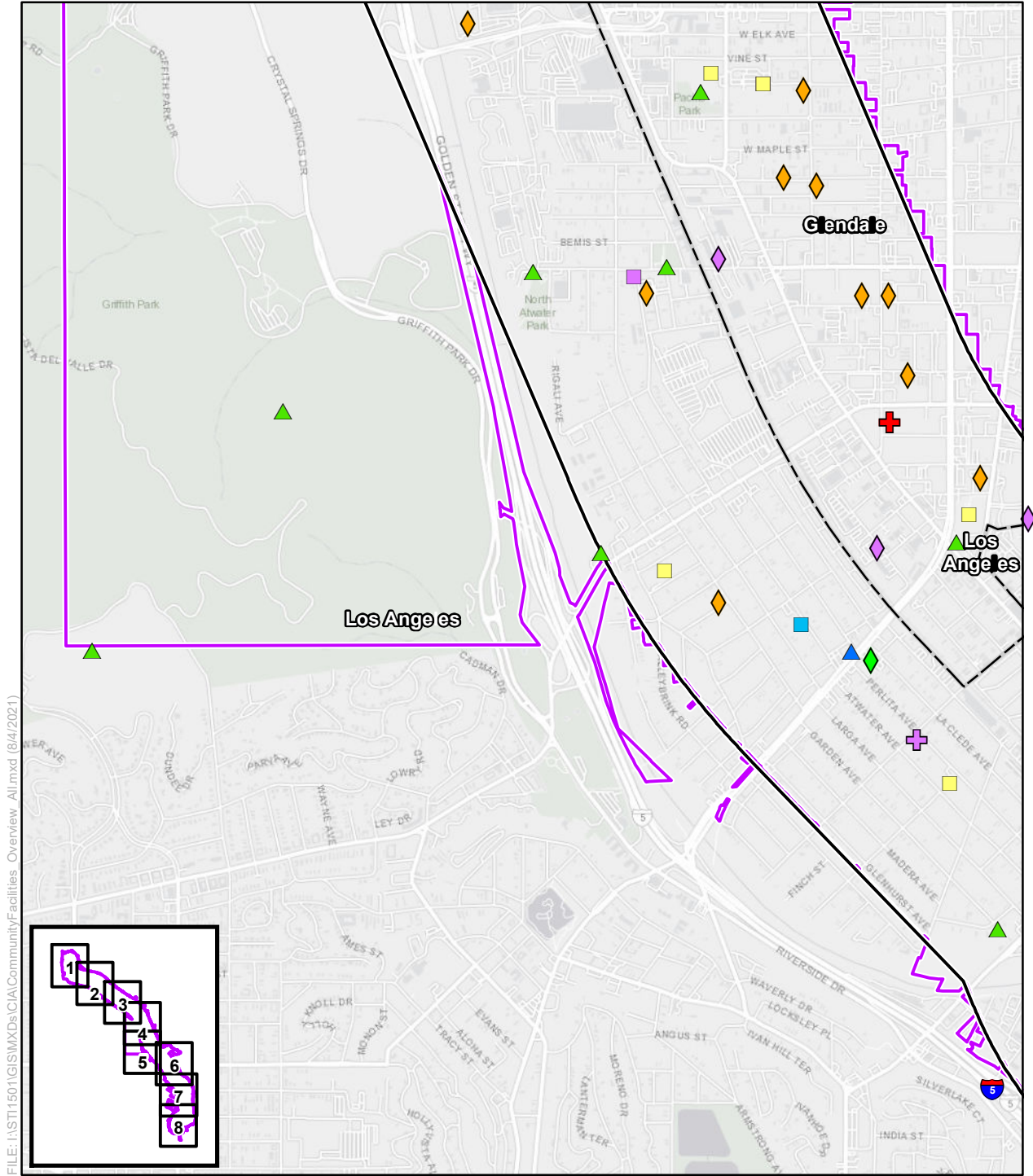


Figure 3.12-1
Sheet 4 of 8
Community Facilities



FILE: I:\STI1501\GIS\MXDs\CA\CommunityFacilities_Overview_All.mxd (8/4/2021)

SOURCE: Esri (2018); CHSRA (6/2021); Los Angeles Geohub (2016); City of Glendale (2016); City of Burbank (2016)

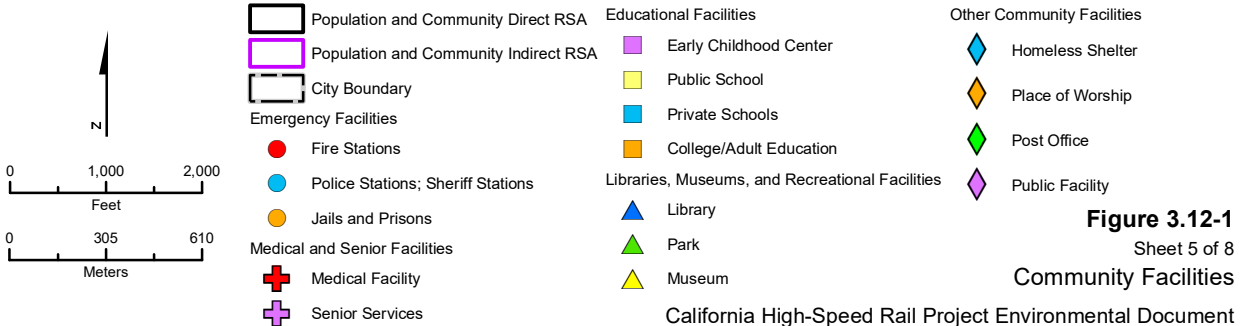
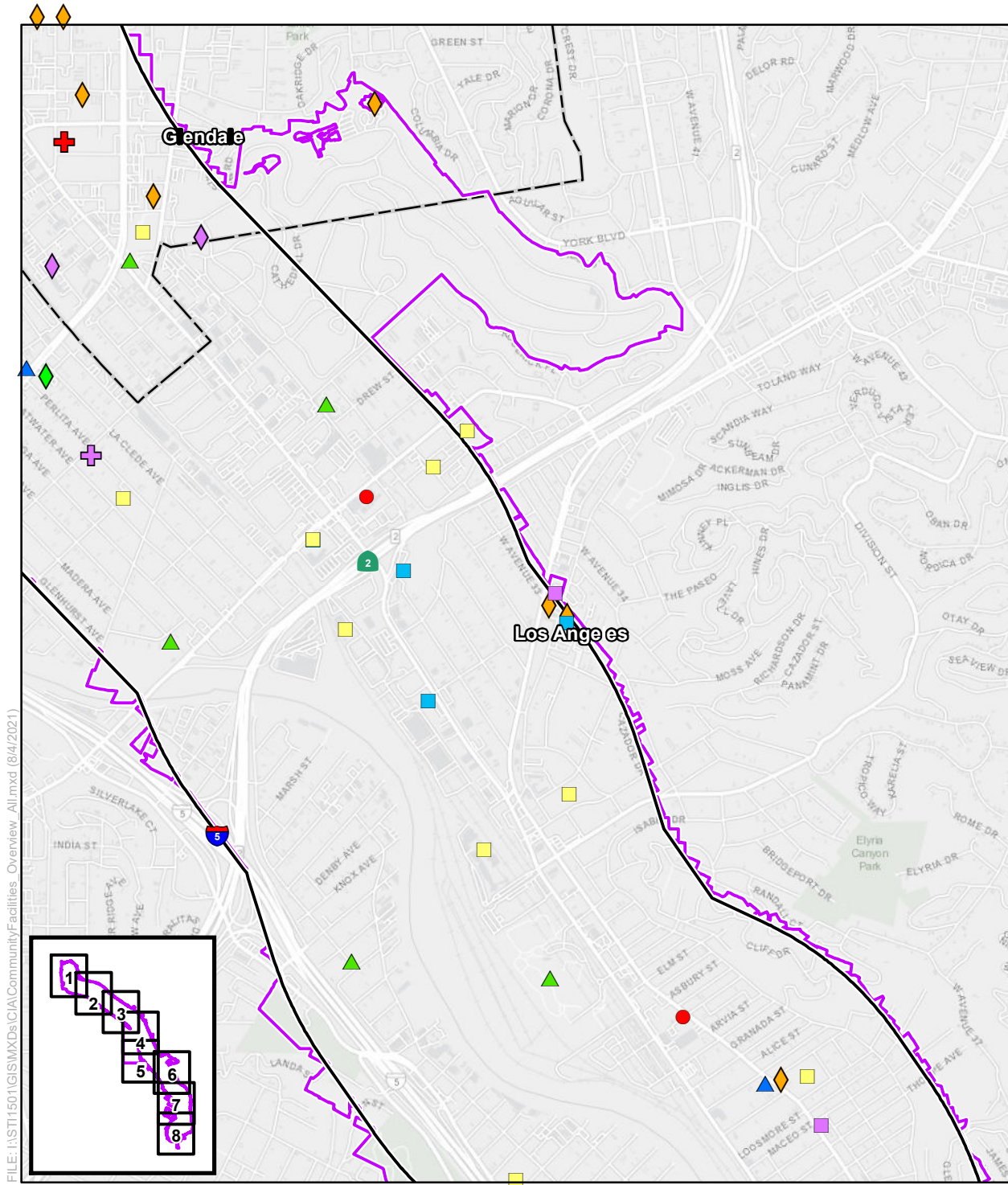


Figure 3.12-1
Sheet 5 of 8
Community Facilities



FILE: I:\ST11501\GIS\MXDs\CIA\CommunityFacilities_Overview_Alt.mxd (8/4/2021)

SOURCE: Esri (2018); CHSRA (6/2021); Los Angeles Geohub (2016); City of Glendale (2016); City of Burbank (2016)

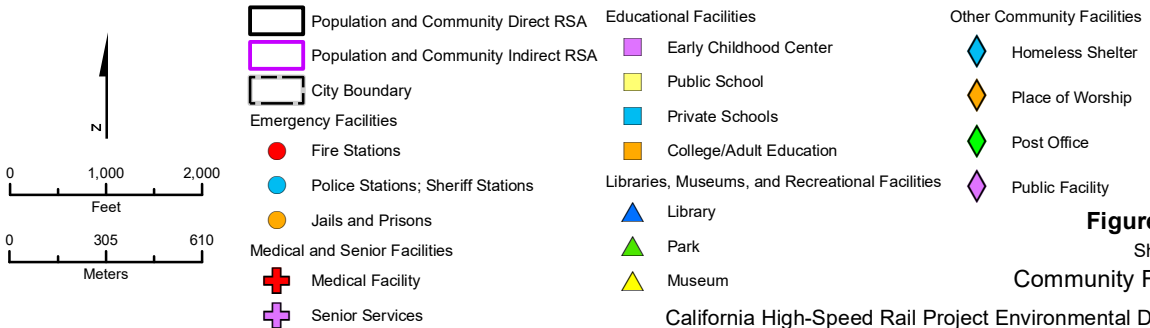
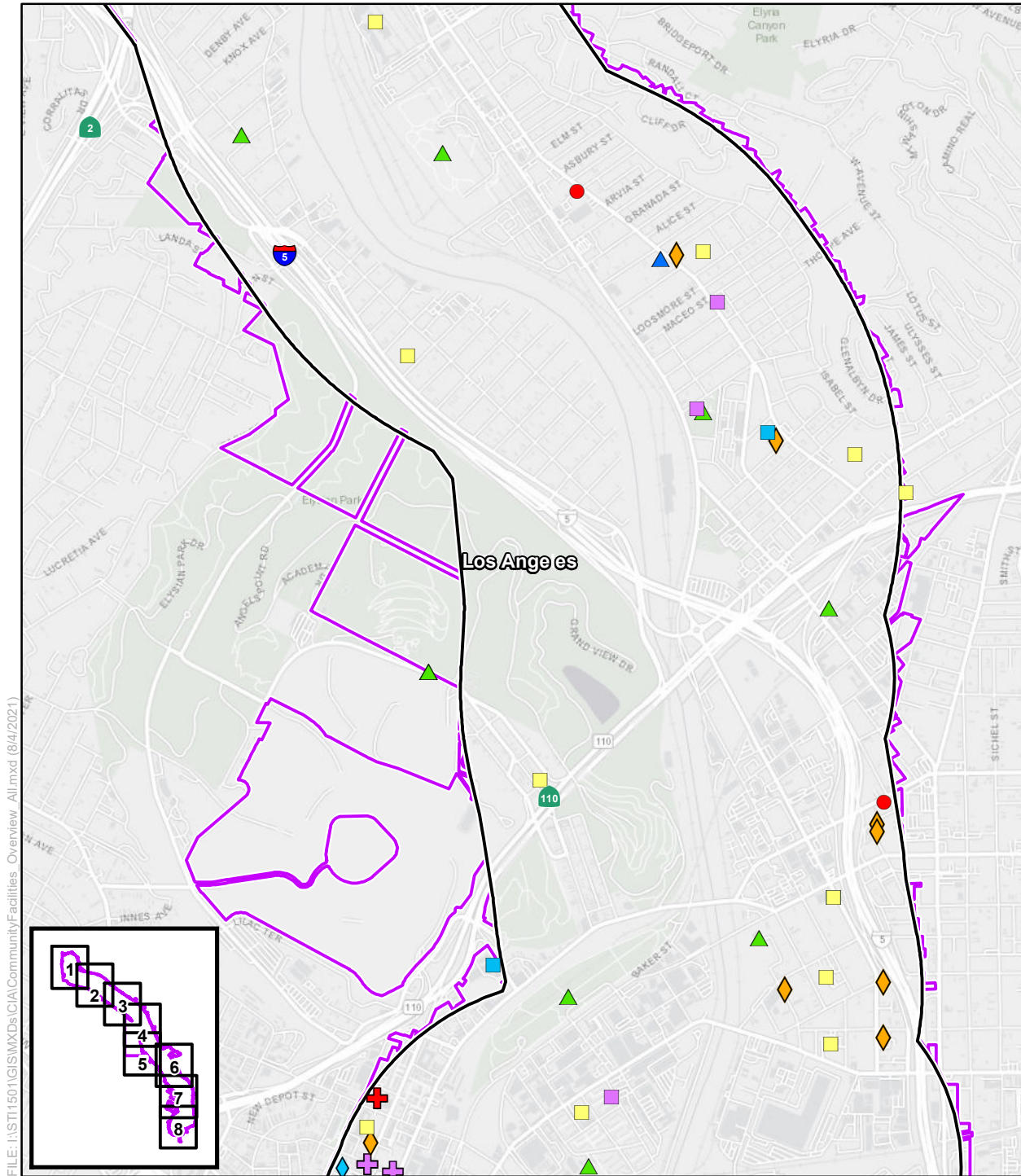


Figure 3.12-1
Sheet 6 of 8
Community Facilities



FILE: I:\S\T1501\GIS\MXDs\CA\CommunityFacilities_Overview_All.mxd (8/4/2021)

SOURCE: Esri (2018); CHSRA (6/2021); Los Angeles Geohub (2016); City of Glendale (2016); City of Burbank (2016)

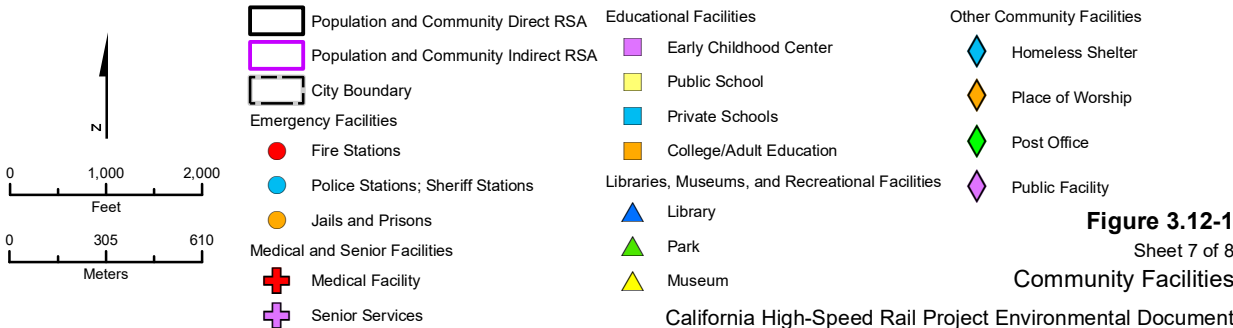
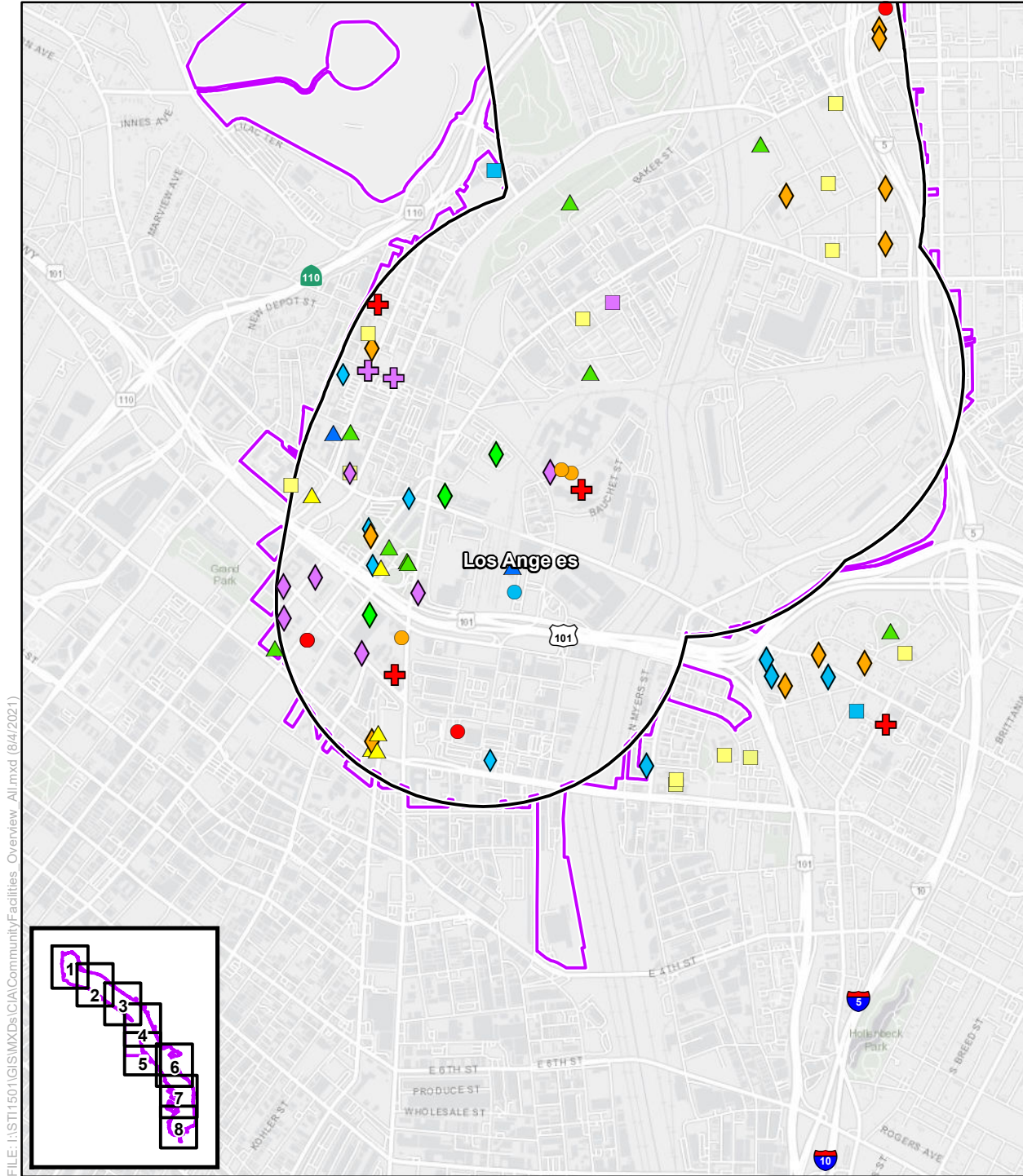


Figure 3.12-1
Sheet 7 of 8
Community Facilities



FILE: I:\STI1501\GIS\MXDs\CA\CommunityFacilities_Overview_All.mxd (8/4/2021)

SOURCE: Esri (2018); CHSRA (6/2021); Los Angeles Geohub (2016); City of Glendale (2016); City of Burbank (2016)

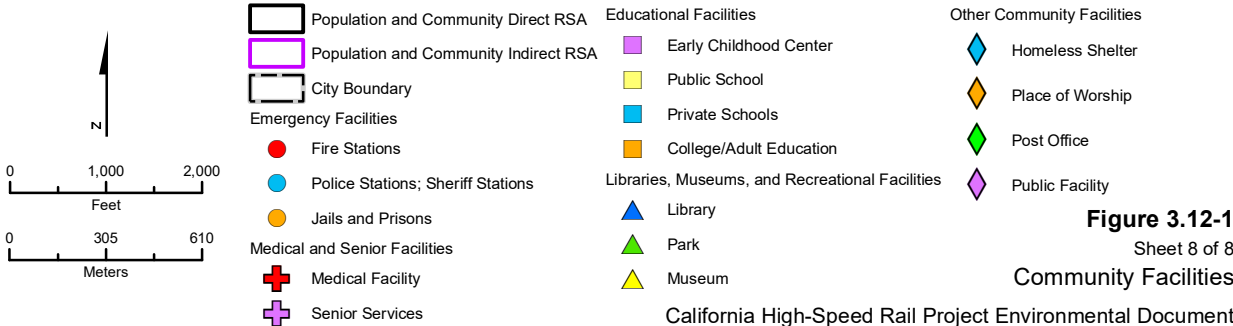
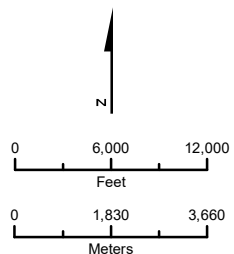
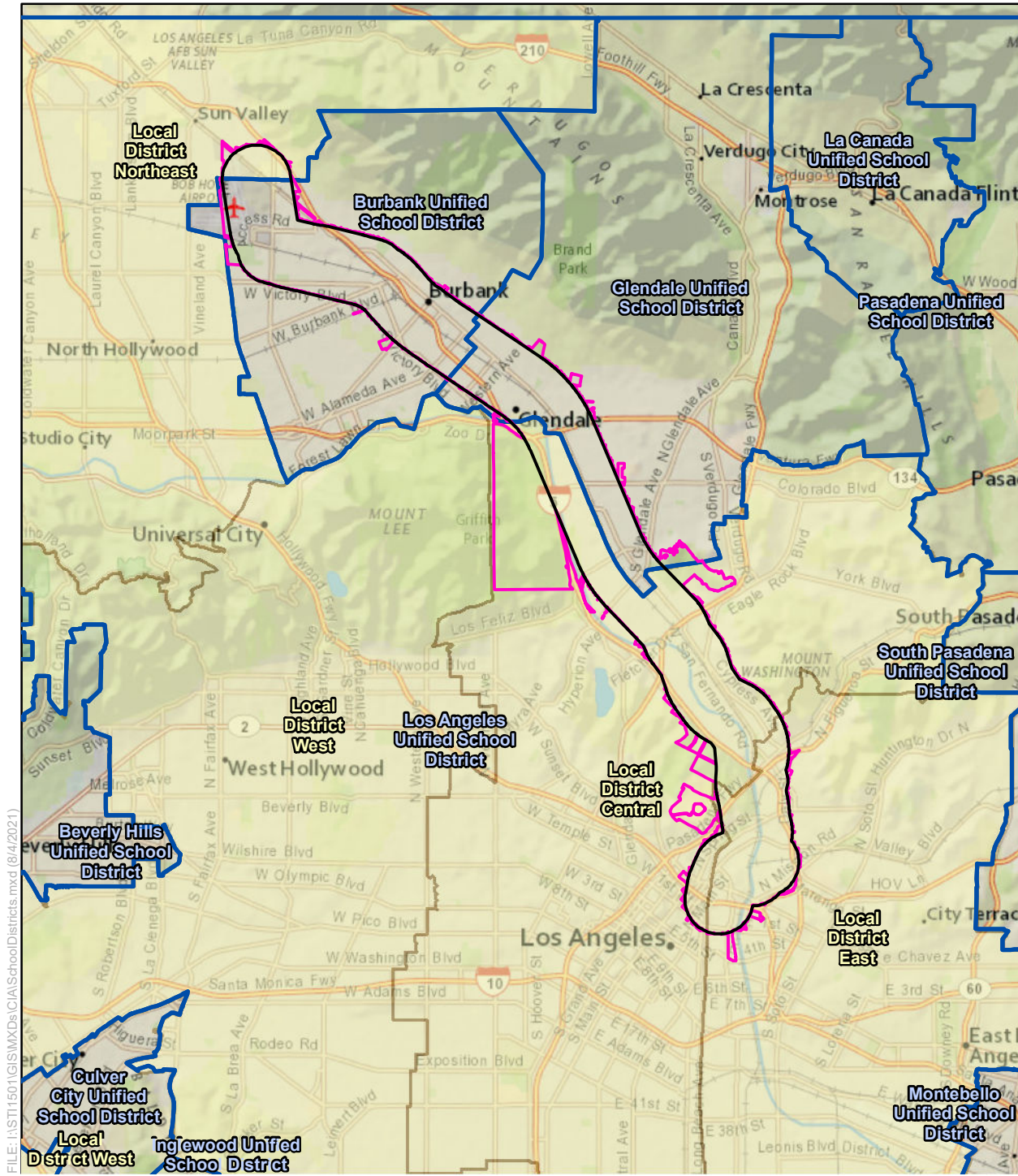
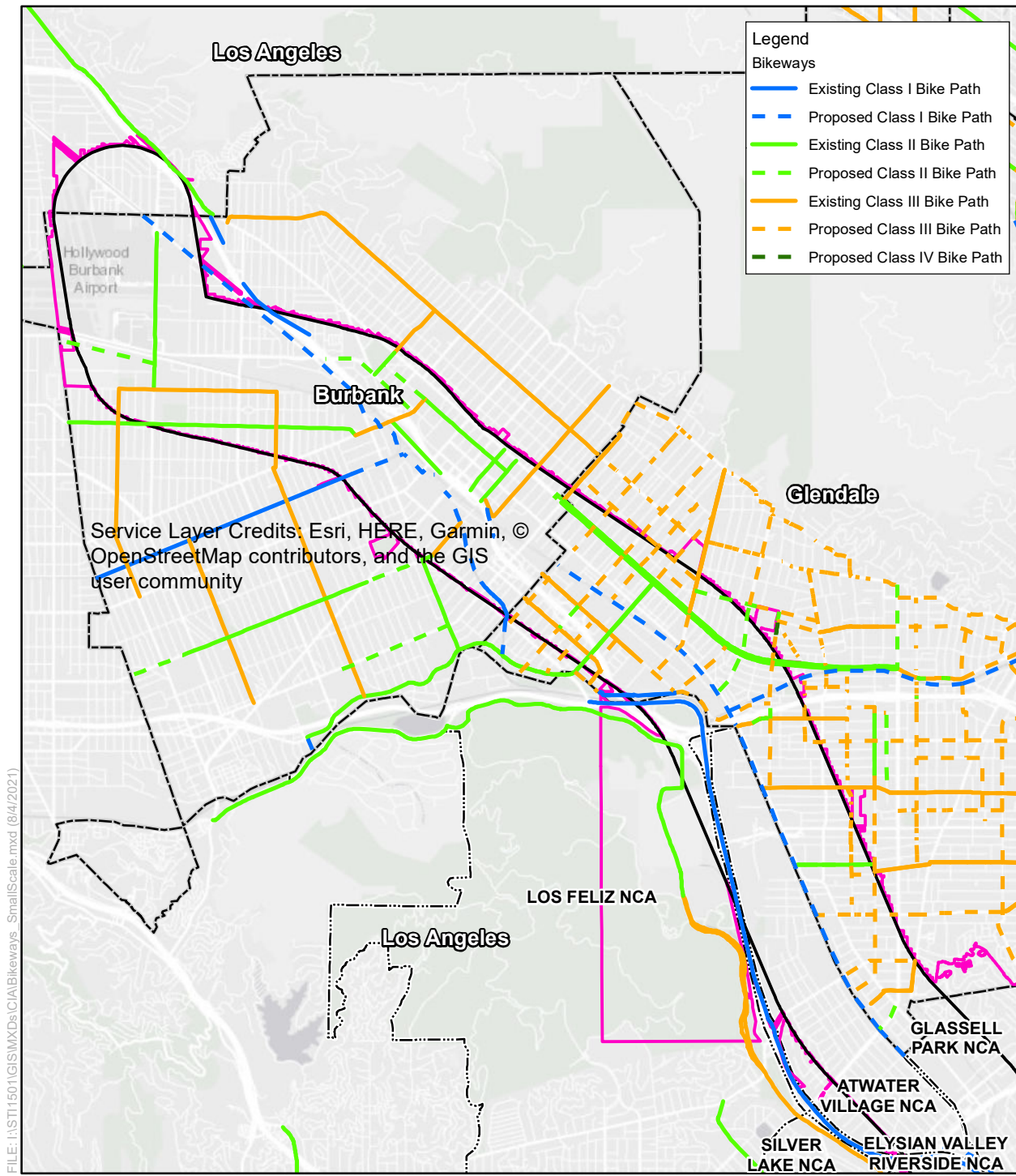


Figure 3.12-1
Sheet 8 of 8
Community Facilities



- Population Communities Direct RSA
- Population Communities Indirect RSA
- School District
- Los Angeles Unified School District Local District

Figure 3.12-2
School Districts



SOURCE: Esri (2018); CHSRA (6/2021); Los Angeles Geohub (2016); City of Glendale (2016); City of Burbank (2016); LA Metro (2016)

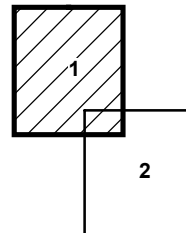
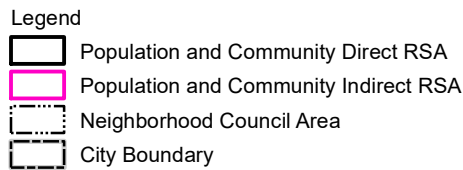
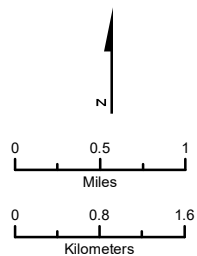
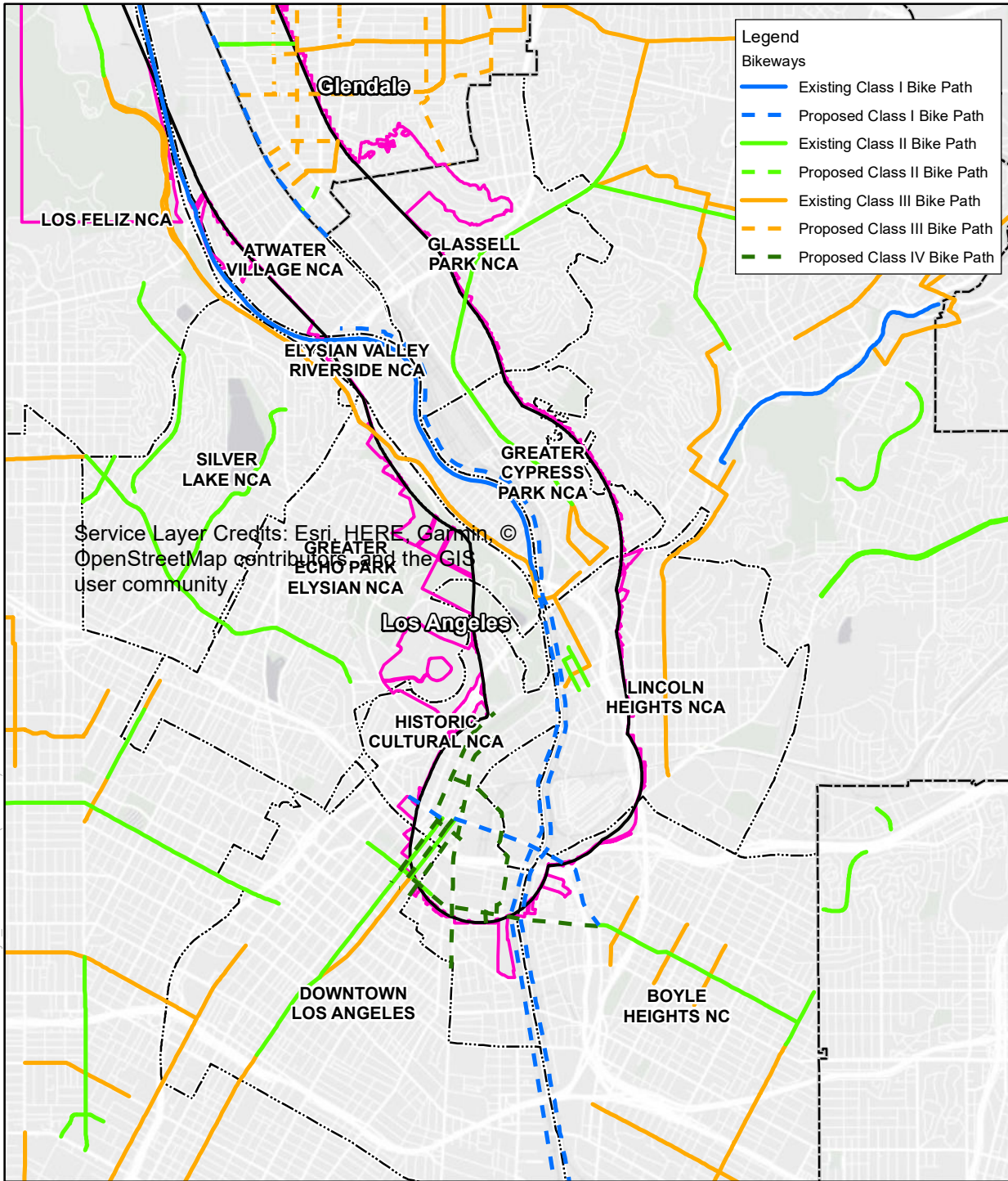


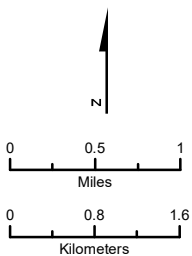
FIGURE 3.12-3
 Page 1 of 2
 Bikeways



Service Layer Credits: Esri, HERE, Garmin, © OpenStreetMap contributors, and the GIS user community

FILE: I:\STI1501\GIS\MXD\CA\Bikeways_SmallScale.mxd (8/4/2021)

SOURCE: Esri (2018); CHSRA (6/2021); Los Angeles Geohub (2016); City of Glendale (2016); City of Burbank (2016); LA Metro (2016)



- Legend
- Population and Community Direct RSA
 - Population and Community Indirect RSA
 - Neighborhood Council Area
 - City Boundary

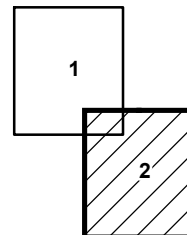


FIGURE 3.12-3
Page 2 of 2
Bikeways

This page intentionally left blank