

LEGEND AND SYMBOLS (CONTINUED)

LEGEND AND SYMBOLS

EXISTING	NEW	DESCRIPTION
---e---	---E---	ELECTRICAL UNDERGROUND
---e---(oh)---	---E---(OH)---	ELECTRICAL OVERHEAD
----gs-----gs---	----GS-----GS---	GAS
---g-----g---	---G-----G---	NATURAL GAS
---irr-----irr---	---IRR-----IRR---	IRRIGATION
---o-----o---	---O-----O---	OIL
---sd-----sd---	---SD-----SD---	STORM DRAIN
---s-----s---	---S-----S---	SEWER
---st-----st---	---ST-----ST---	STEAM
---tc------(oh)---	---TC------(OH)---	TELECOMMUNICATION OVERHEAD
---tc-----tc---	---TC-----TC---	TELECOMMUNICATION UNDERGROUND
---t------(oh)---	---T------(OH)---	TELEPHONE OVERHEAD
---t-----t---	---T-----T---	TELEPHONE UNDERGROUND
---tv------(oh)---	---TV------(OH)---	TELEVISION OVERHEAD
---tv-----tv---	---TV-----TV---	TELEVISION UNDERGROUND
---w-----w---	---W-----W---	WATER, RECYCLED WATER
---fo-----fo---	---FO-----FO---	FIBER OPTIC
		IRRIGATION WELL, WEIR, TURNOUT, PUMP
		SEWER, STORM DRAIN MANHOLE
		UTILITY POLE
		POWER TRANSMISSION TOWER
		STREET LIGHT
		NORTH ARROW
		PROP CHSR RIGHT-OF-WAY
		CHSR TRACK CENTER LINE
		RETAINING WALL
		TOP OF CUT GRADING LINE
		TOE OF SLOPE GRADING LINE
		STRUCTURE FOUNDATION
		PTEF
		PPEF
		UTILITY TO BE REMOVED, RELOCATED, OR ABANDONED
		RETENTION BASIN
		KEY NOTE, UTILITY NUMBER

	SOLAR FARM
	WIND TURBINE
	PARALLELING STATION
	AUTOMATIC TRAIN CONTROL SYSTEM SITE D

ABBREVIATIONS

AB	AGGREGATE BASE	FH	FIRE HYDRANT	R	RADIUS
ABN	ABANDON	FM	FORCE MAIN	RCP	REINFORCED CONCRETE PIPE
AC	ASPHALT CONCRETE	F-B	FRESNO TO BAKERSFIELD	RD	ROAD
ACB	ASPHALT CONCRETE BASE	FO	FIBER OPTIC	RDWY	ROADWAY
ACP	ASBESTOS CEMENT PIPE	FUT	FUTURE	REQD	REQUIRED
A/G	AT GRADE			RR	RAILROAD
ALT	ALTERNATIVE	G	GAS	RT	RIGHT
APPROX	APPROXIMATE	GALV	GALVANIZED	RTE	ROUTE
AVE	AVENUE	GB	GRADE BREAK	R/W, ROW	RIGHT-OF-WAY
		GIS	GEOGRAPHICAL INFORMATION SYSTEM	RWY	RAILWAY
BEG	BEGIN	GND	GROUND	S	SOUTH
BFSSA	BAKERSFIELD F STREET STATION ALIGNMENT	GTR	GUTTER	SB	SOUTHBOUND
BLDG	BUILDING	GV	GAS VALVE	SD	STORM DRAIN
BLVD	BOULEVARD	GWTR	GROUNDWATER	SDMH	STORM DRAIN MANHOLE
BNSF	BURLINGTON NORTHERN SANTA FE	GWMM	GROUNDWATER MONITOR WELL	SF	SQUARE FEET
BO	BLOW-OFF	GWAW	GROUNDWATER ACTIVE WELL	SHLD	SHOULDER
B-P	BAKERSFIELD TO PALMDALE			SR	STATE ROUTE
		HOR	HORIZONTAL	SS	SANITARY SEWER, SUPPLY STATION
CB	CATCH BASIN	HSR	HIGH-SPEED RAIL	SSMH	SANITARY SEWER MANHOLE
CD	CURB DRAIN	HST	HIGH-SPEED TRAIN	ST	STREET
C&G	CURB AND GUTTER	HV	HIGH VOLTAGE	STA	STATION
CHSR	CALIFORNIA HIGH-SPEED RAIL	IN	INCH	SW	SIDEWALK, SWITCHING STATION
CHST	CALIFORNIA HIGH-SPEED TRAIN	INV	INVERT	SWR	SEWER
CIP	CAST IRON PIPE	IRR	IRRIGATION	T	TELEPHONE, TOTAL
CL	CENTERLINE, CLASS	L	LENGTH	TBD	TO BE DETERMINED
CL	CENTERLINE	LAN	LANCASTER	TC	TELECOMMUNICATION
CLSM	CONTROLLED LOW STRENGTH MATERIAL	LT	LEFT	TCE	TEMPORARY CONSTRUCTION EASEMENT
CPUC	CALIFORNIA PUBLIC UTILITIES COMMISSION	MAX	MAXIMUM	TEL	TELEPHONE
CMP	CORRUGATED METAL PIPE	MIN	MINIMUM	TP	TRACTION POWER
CTV	CABLE TELEVISION	N	NORTH, NEW	TOR	TOP OF RAIL
CV	CURVE	NA	NOT APPLICABLE	TRANS	TRANSMISSION
D	DEPTH	NB	NORTHBOUND	TS	TRAFFIC SIGNAL
DI	DRAINAGE INLET	NIC	NOT IN CONTRACT	TYP	TPICAL
DIA	DIAMETER	NO	NUMBER	UG, U/G	UNDERGROUND
DIP	DUCTILE IRON PIPE	NTS	NOT TO SCALE	UNK	UNKNOWN
DIST	DISTANCE, DISTRIBUTION	OCS	OVERHEAD CONTACT SYSTEM	UPRR	UNION PACIFIC RAILROAD
DWG	DRAWING	PROP, (P)	PROPOSED	VAR	VARIES
E	ELECTRICAL, EAST	PED	PEDESTRIAN	VC	VERTICAL CURVE
EB	EASTBOUND	PPEF	PROPOSED PERMANENT ENVIRONMENTAL FOOTPRINT	VCP	VITRIFIED CLAY PIPE
EDSN	EDISON	PS	PARALLELING STATION	W	WEST, WATER
EL	ELEVATION	PTEF	PROPOSED TEMPORARY ENVIRONMENTAL FOOTPRINT	W/	WITH
ELEC	ELECTRIC	PVC	POLYVINYL CHLORIDE	WB	WESTBOUND
EP	EDGE OF PAVEMENT	PVMT	PAVEMENT	WM	WATER MAIN
EXIST, (E)	EXISTING	PG	PROPOSED GRADE	WV	WATER VALVE

Projects\701206.00_CHSRBP\00_CADD\Sheet Files\CCNM\UT\BP-UT-B0001 11:26:19 PM 1/12/2021 javier_lopez@tylin.com

REV	DATE	BY	CHK	APP	DESCRIPTION

DESIGNED BY D. HOLMAN
DRAWN BY J. LOPEZ
CHECKED BY G. CAMPBELL
IN CHARGE G. CAMPBELL
DATE 01/29/2021

**RECORD SET
PEPD
SUBMITTAL**

**NOT FOR
CONSTRUCTION**



**CALIFORNIA HIGH-SPEED RAIL PROJECT
BAKERSFIELD TO PALMDALE**

CCNM DESIGN OPTION
COMPOSITE UTILITY GENERAL
ABBREVIATIONS AND LEGEND

CONTRACT NO. HSR13-44
DRAWING NO. UT-B0001
SCALE NO SCALE
SHEET NO. 131

UTILITY OWNERS	
OWNER	ABBREVIATION
ANTELOPE VALLEY EAST KERN WATER AGENCY	AVEKWA
APR CORPORATION	APR CORP
ARVIN-EDISON WATER STORAGE DISTRICT	AEWSD
AT&T TRANSMISSION	AT&T TRANS
AT&T/PACBELL	PACBELL
BRIGHT HOUSE NETWORKS	BRIGHTHOUSE
CALIFORNIA WATER SERVICE	CALWATER
CALTRANS	CALTRANS
CENTURYLINK COMMUNICATION CA	CENTURYLINK
CITY OF BAKERSFIELD	CITY OF BAKERSFIELD
CITY OF LANCASTER	CITY OF LANCASTER
CITY OF PALMDALE	CITY OF PALMDALE
CITY OF TEHACHAPI	CITY OF TEHACHAPI
COUNTY OF KERN	COUNTY OF KERN
CVIN LLC	CVIN
DOLE ENTERPRISES	DOLE ENT
EAST NILES COMMUNITY SERVICES DISTRICT	ENCSD
GOLDEN HILLS COMMUNITY SERVICE DISTRICT	GHCSO
KERN DELTA WATER DISTRICT	KDWD
KERN OIL & REFINING	KERN OIL
KERN SANITATION AUTHORITY	KSA
KINDER MORGAN (EL PASO PIPELINE)	EL PASO/KM
KINDER MORGAN (MOJAVE PIPELINE)	MOJAVE/KM
LANDALE MUTUAL WATER COMPANY	LMWC
LEVEL 3 COMMUNICATIONS	LEVEL 3
LOS ANGELES DEPARTMENT OF WATER AND POWER	LADWP
LOS ANGELES COUNTY DEPT OF PUBLIC WORKS - WATER WORKS	LACDPW-WW
LOS ANGELES COUNTY DEPARTMENT OF PARKS AND RECREATION	LACDPR
LOS ANGELES COUNTY SANITATION DISTRICT	LACSD
NAFTEX OPERATING COMPANY	NAFTEX
NEXTERA ENERGY RESOURCES	NEXTERA
PG&E - DISTRIBUTION	PG&E DIST
PG&E - TRANSMISSION	PG&E TRANS
PHILLIPS 66 - TOSCO	PHILLIPS66
ROSAMOND COMMUNITY SERVICE DISTRICT	RCSD
SHELL PIPELINE CO	SHELL
SOUTHERN CALIFORNIA EDISON - TRANSMISSION	SCE TRANS
SOUTHERN CALIFORNIA EDISON - DISTRIBUTION	SCE DIST
SOUTHERN CALIFORNIA GAS CO/SEMPRA - DISTRIBUTION	SEMPRA DIST

UTILITY OWNERS CONT.	
OWNER	ABBREVIATION
SOUTHERN CALIFORNIA GAS CO/SEMPRA - TRANSMISSION	SEMPRA TRANS
SPRINT	SPRINT
SUNESYS, LLC	SUNESYS
TEHACHAPI CUMMINGS WATER	TEHACHAPI CUMMINGS
TIME WARNER	TIME WARNER
UNITED STATES BUREAU OF RECLAMATION	USBR
VALLEY WATER MANAGEMENT COMPANY	VWMC
VAQUERO ENERGY	VAQUERO
VERIZON	VERIZON

GENERAL NOTES:

- EXISTING UNDERGROUND UTILITIES AND IMPROVEMENTS ARE SHOWN IN THEIR APPROXIMATE LOCATION BASED UPON RECORD INFORMATION AVAILABLE AT THE TIME OF PREPARATION THESE PLANS. THE LOCATION OF EXISTING UTILITIES ARE BASED ON FOUR SOURCES:
 - TOPOGRAPHIC SURVEY
 - GIS
 - AS-BUILT DRAWINGS
 - LIMITED FIELD RECONNAISSANCE
 THE CONTRACTOR SHALL CONDUCT ITS OWN SURVEY AND VERIFY THE LOCATION OF EXISTING UTILITIES AND RECONCILE THE SURVEY DATA AND GIS DATA.
- SERVICE LATERALS FOR POTABLE WATER, SANITARY SEWER AND NATURAL GAS ARE NOT SHOWN.
- EXISTING UTILITIES IDENTIFIED WITH THE DISPOSITION 'RELOCATE' AND 'REMOVE' PERTAIN TO ONLY THAT PORTION OF THE UTILITY WITHIN THE PROPOSED CHSR ROW OR IMPACTED BY PROPOSED IMPROVEMENTS.
- ABANDONMENT OF EXISTING OIL WELLS SHALL CONFORM TO THE REQUIREMENTS OF AGENCIES HAVING JURISDICTION REGARDING DECOMMISSIONING OF EXISTING OIL WELLS AND APPURTENANT EQUIPMENT.
- ACQUISITION OF UTILITY EASEMENTS IS BASED ON THE BP DRAFT DESIGN BASELINE REPORT, SECTION 5.0 RIGHT-OF-WAY. ASSUMED WIDTHS ARE LISTED IN THE UTILITY EASEMENT TABLE, THIS DRAWING.
- RELOCATIONS OF HIGH RISK UTILITIES ARE SHOWN, NOT ALL UTILITY RELOCATIONS ARE SHOWN.
- FOR SUPPLY STATION, SWITCHING STATIONS, AND PARALLELING STATIONS REFER TO THE TRACTION POWER DRAWINGS.

HIGH VOLTAGE TRANSMISSION LINE RELOCATION NOTES:

- ELECTRICAL TOWER AND WIRE HEIGHTS ARE NOT BASED ON FIELD SURVEY AND MAY NOT REPRESENT ACTUAL FIELD CONDITIONS.
- CPUC VERTICAL CLEARANCE FROM OCS POLE NEGATIVE FEEDER WIRE TO LOWEST HIGH VOLTAGE ELECTRICAL CONDUCTOR: CPUC GO 95 RULE 38 TABLE 2 (CASE 12).
- ELECTRICAL TRANSMISSION TOWERS/POLES SUBJECT TO ADDITIONAL CLEARANCE REQD BY UTILITY OWNER.
- PROPOSED HV TRANSMISSION TOWERS REPRESENTED CONCEPTUALLY.
- NEGATIVE FEEDER WIRE DISTANCE ABOVE TOP RAIL: 30' FOR 2 TRACK CONFIGURATION, 35' FOR 3 OR MORE TRACK CONFIGURATION.

DRAINAGE SYSTEM AND RELOCATION NOTES:

EXISTING STORM DRAINAGE PIPES, CULVERTS, OR CHANNELS ARE SHOWN FOR INFORMATION ONLY. REFER TO GRADING AND DRAINAGE PLANS FOR DETAILED DRAINAGE INFORMATION.

REV	DATE	BY	CHK	APP	DESCRIPTION

DESIGNED BY D. HOLMAN
DRAWN BY J. LOPEZ
CHECKED BY G. CAMPBELL
IN CHARGE G. CAMPBELL
DATE 01/29/2021

**RECORD SET
PEPD
SUBMITTAL**

**NOT FOR
CONSTRUCTION**

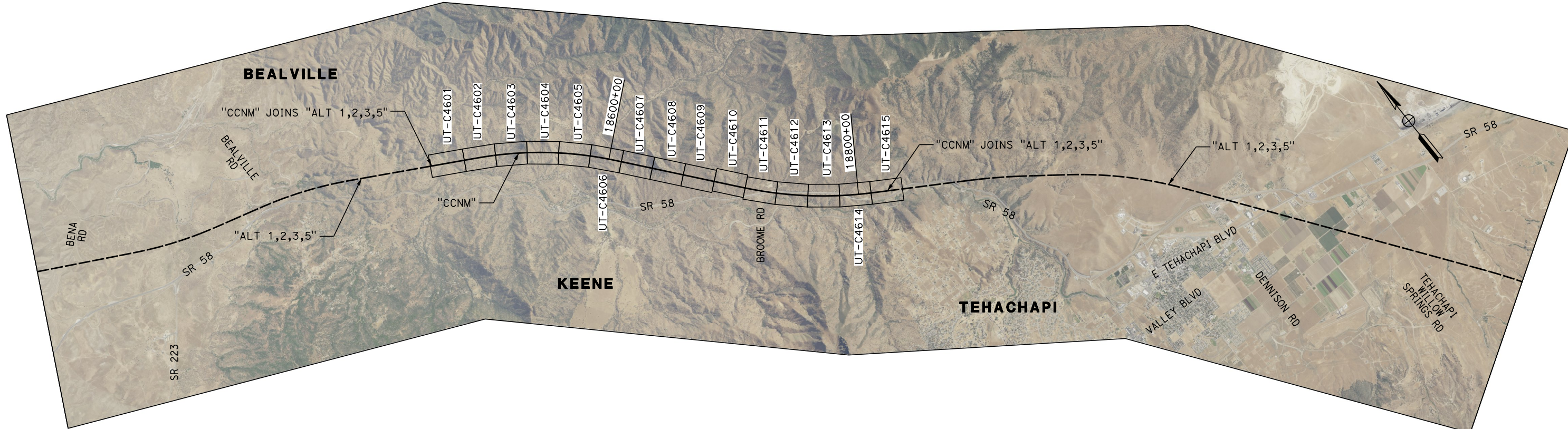
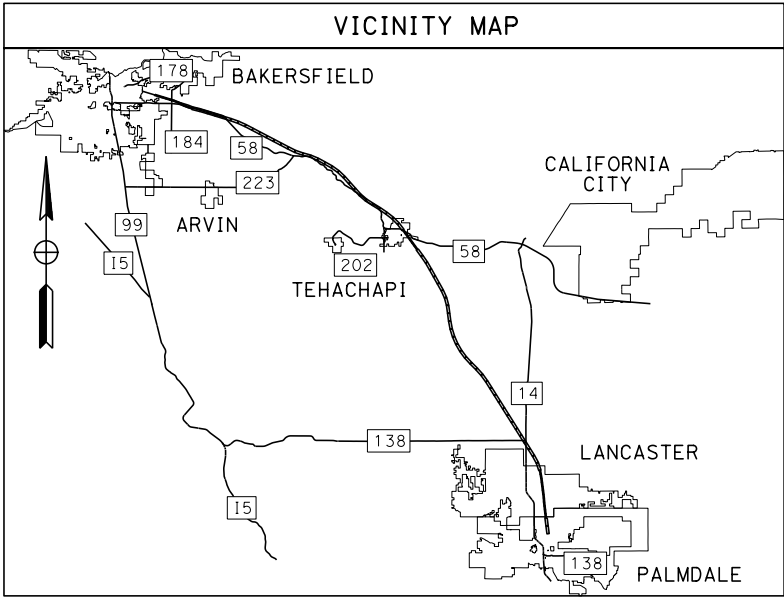


**CALIFORNIA HIGH-SPEED RAIL PROJECT
BAKERSFIELD TO PALMDALE**

CCNM DESIGN OPTION
COMPOSITE UTILITY GENERAL
GENERAL NOTES AND UTILITY OWNERS

CONTRACT NO. HSR13-44
DRAWING NO. UT-B0002
SCALE NO SCALE
SHEET NO. 132

CCNM DESIGN OPTION



Projects\701206.00_CHSRBP\00_CADD\Sheet Files\CCNM\UT\BP-UT-B0003

javier.lopez@tylin.com 1/12/2021 11:26:13 PM

REV	DATE	BY	CHK	APP	DESCRIPTION

DESIGNED BY
D. HOLMAN

DRAWN BY
J. LOPEZ

CHECKED BY
G. CAMPBELL

IN CHARGE
G. CAMPBELL

DATE
01/29/2021

**RECORD
PEPD
SUBMITTAL**

**NOT FOR
CONSTRUCTION**



**CALIFORNIA HIGH-SPEED RAIL PROJECT
BAKERSFIELD TO PALMDALE**

CCNM DESIGN OPTION
COMPOSITE UTILITY GENERAL
KEY MAP
SHEET 1 OF 1

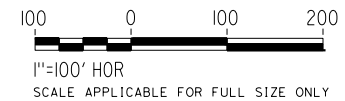
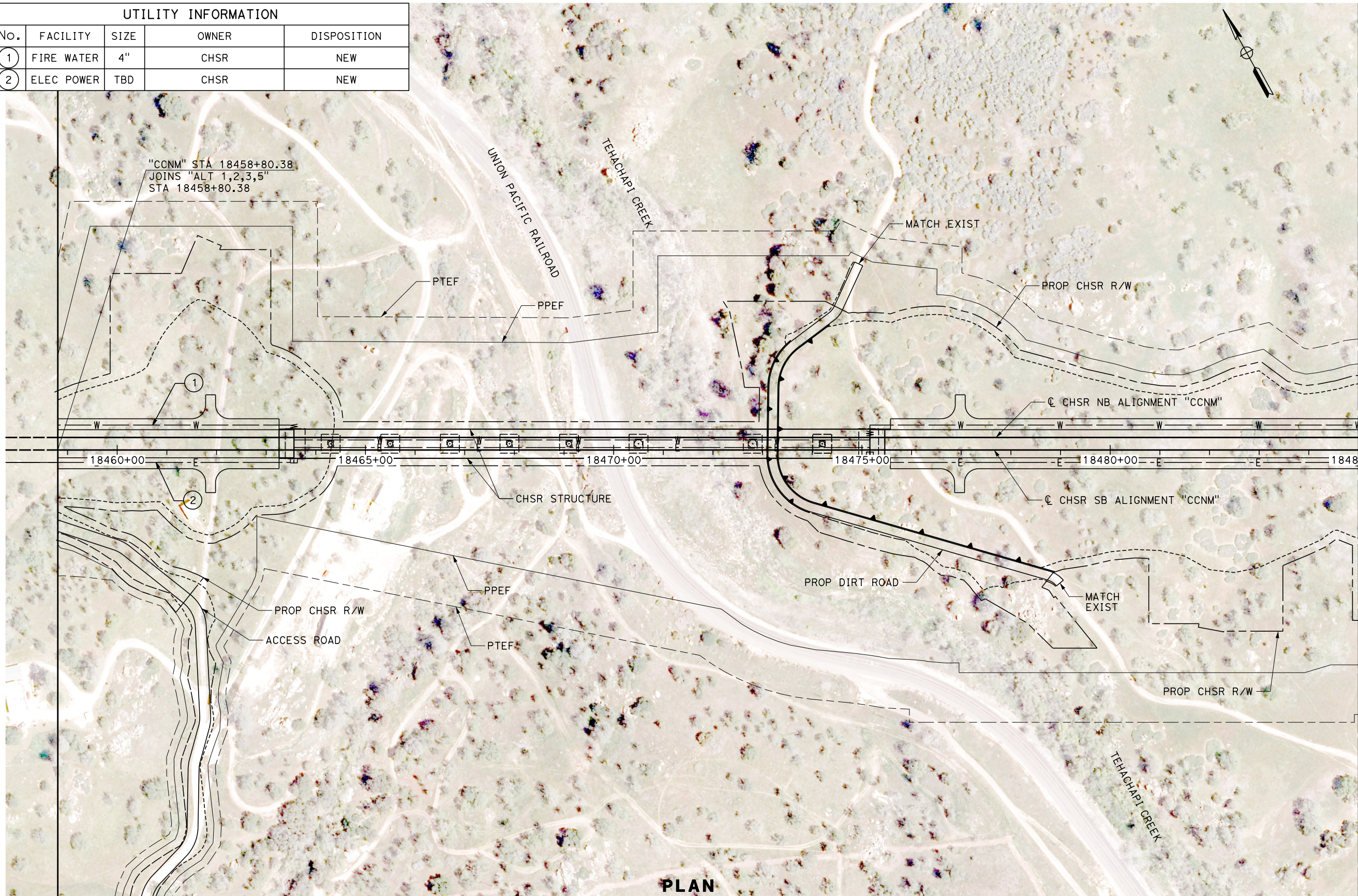
CONTRACT NO.
HSR13-44

DRAWING NO.
UT-B0003

SCALE
AS SHOWN

SHEET NO.
133

UTILITY INFORMATION				
NO.	FACILITY	SIZE	OWNER	DISPOSITION
1	FIRE WATER	4"	CHSR	NEW
2	ELEC POWER	TBD	CHSR	NEW



PLAN

Projects\701206.00_CHSRBP\00_CADD\Sheet Files\CCNM\UT\BP-UT-C4601 1/12/2021 11:30:10 PM javier_lopez@tylin.com

REV	DATE	BY	CHK	APP	DESCRIPTION

DESIGNED BY
D. HOLMAN
DRAWN BY
J. LOPEZ
CHECKED BY
G. CAMPBELL
IN CHARGE
G. CAMPBELL
DATE
01/29/2021

**RECORD
PEPD
SUBMITTAL**

**NOT FOR
CONSTRUCTION**



**CALIFORNIA HIGH-SPEED RAIL PROJECT
BAKERSFIELD TO PALMDALE**
CCNM DESIGN OPTION
COMPOSITE UTILITY PLAN
STA 18458+80 TO 18485+00
PLAN

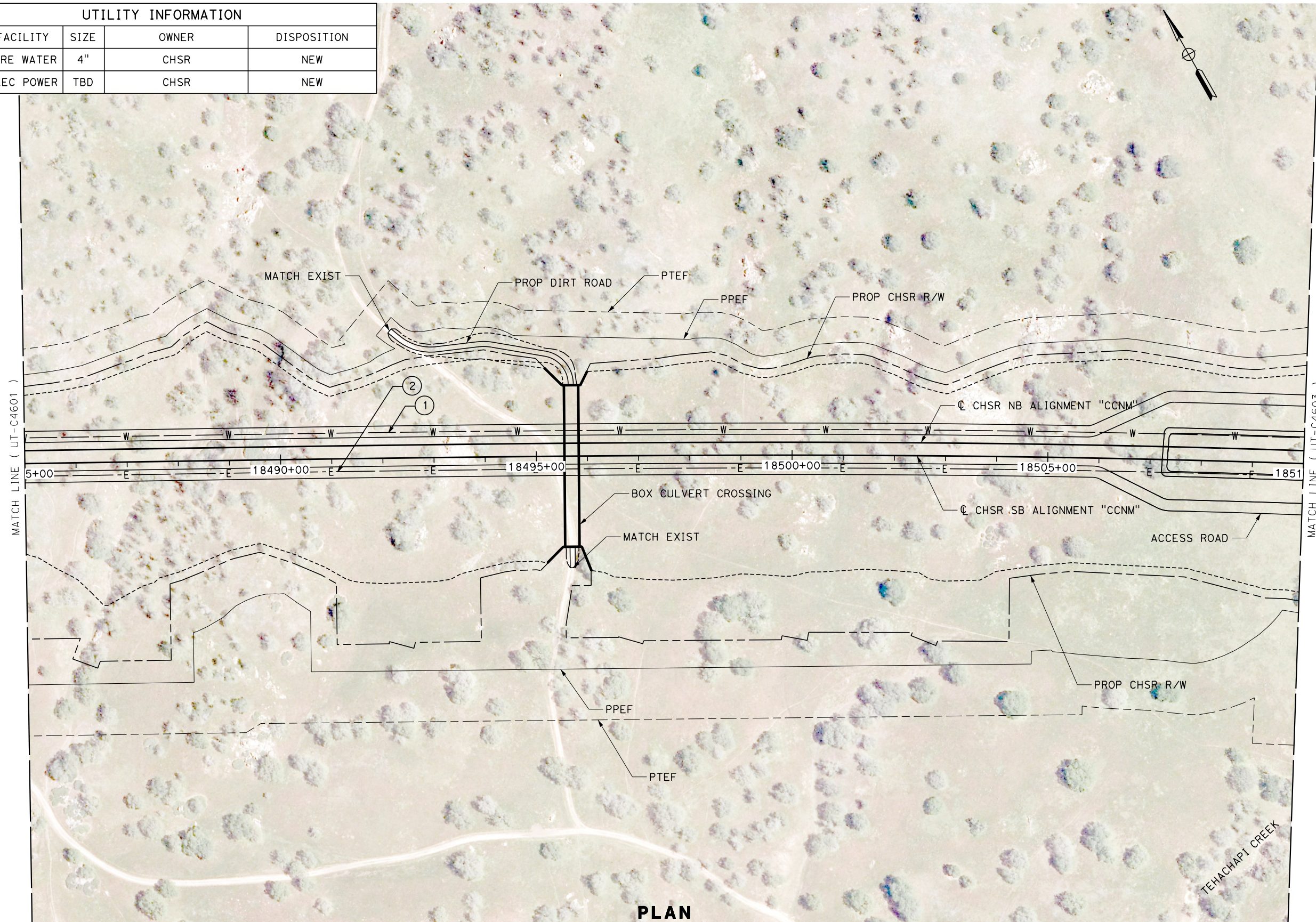
CONTRACT NO.
HSR13-44
DRAWING NO.
UT-C4601
SCALE
AS SHOWN
SHEET NO.
134

Projects\701206.00_CHSRBP\00_CADD\Sheet_Files\CCNM\UT\BP-UT-C4602

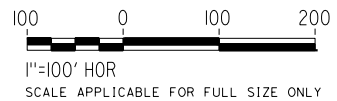
1/12/2021 11:30:15 PM

javier_lopez@tylin.com

UTILITY INFORMATION				
No.	FACILITY	SIZE	OWNER	DISPOSITION
1	FIRE WATER	4"	CHSR	NEW
2	ELEC POWER	TBD	CHSR	NEW



PLAN



REV	DATE	BY	CHK	APP	DESCRIPTION

DESIGNED BY
D. HOLMAN
DRAWN BY
J. LOPEZ
CHECKED BY
G. CAMPBELL
IN CHARGE
G. CAMPBELL
DATE
01/29/2021

**RECORD
PEPD
SUBMITTAL**

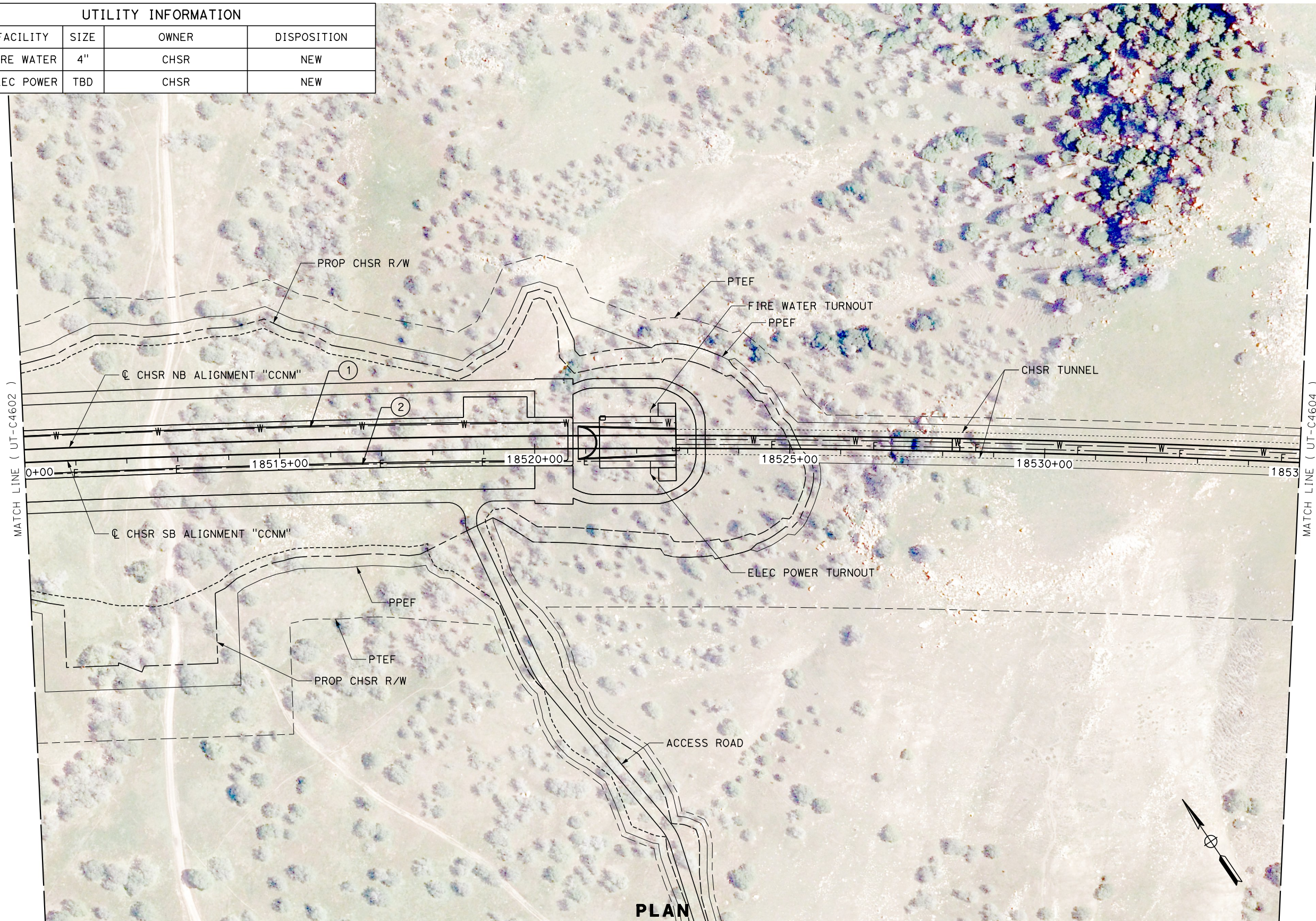
**NOT FOR
CONSTRUCTION**



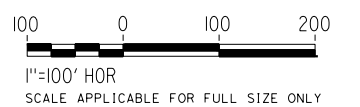
**CALIFORNIA HIGH-SPEED RAIL PROJECT
BAKERSFIELD TO PALMDALE**
CCNM DESIGN OPTION
COMPOSITE UTILITY PLAN
STA 18485+00 TO 18510+00
PLAN

CONTRACT NO.
HSR13-44
DRAWING NO.
UT-C4602
SCALE
AS SHOWN
SHEET NO.
135

UTILITY INFORMATION				
No.	FACILITY	SIZE	OWNER	DISPOSITION
1	FIRE WATER	4"	CHSR	NEW
2	ELEC POWER	TBD	CHSR	NEW



PLAN



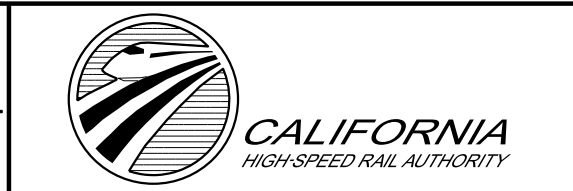
Projects\701206.00_CHSRBP\00_CADD\Sheet_Files\CCNM\UT\BP-UT-C4603 1/12/2021 11:30:18 PM javier_lopez@tylin.com

REV	DATE	BY	CHK	APP	DESCRIPTION

DESIGNED BY
D. HOLMAN
DRAWN BY
J. LOPEZ
CHECKED BY
G. CAMPBELL
IN CHARGE
G. CAMPBELL
DATE
01/29/2021

**RECORD
PEPD
SUBMITTAL**

**NOT FOR
CONSTRUCTION**

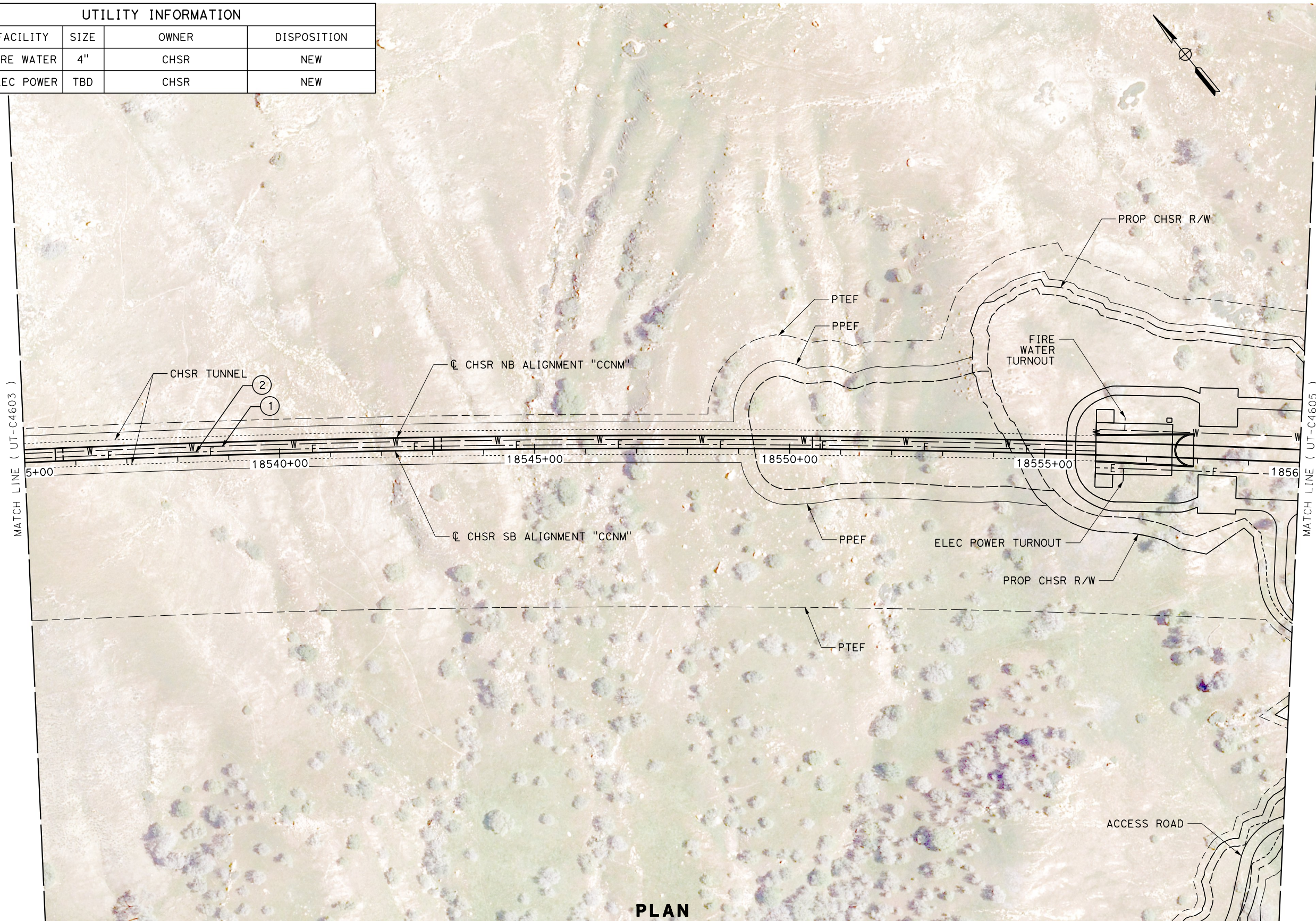


**CALIFORNIA HIGH-SPEED RAIL PROJECT
BAKERSFIELD TO PALMDALE**

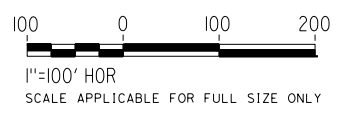
CCNM DESIGN OPTION
COMPOSITE UTILITY PLAN
STA 18510+00 TO 18535+00
PLAN

CONTRACT NO.
HSR13-44
DRAWING NO.
UT-C4603
SCALE
AS SHOWN
SHEET NO.
136

UTILITY INFORMATION				
No.	FACILITY	SIZE	OWNER	DISPOSITION
1	FIRE WATER	4"	CHSR	NEW
2	ELEC POWER	TBD	CHSR	NEW



PLAN



Projects\701206.00_CHSRBP\00_CADD\Sheet_Files\CCNM\UT_BP-UT-C4604 1/12/2021 11:30:22 PM javier_lopez@tylin.com

REV	DATE	BY	CHK	APP	DESCRIPTION

DESIGNED BY
D. HOLMAN
DRAWN BY
J. LOPEZ
CHECKED BY
G. CAMPBELL
IN CHARGE
G. CAMPBELL
DATE
01/29/2021

**RECORD
PEPD
SUBMITTAL**

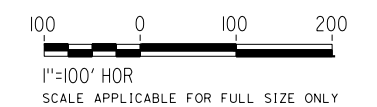
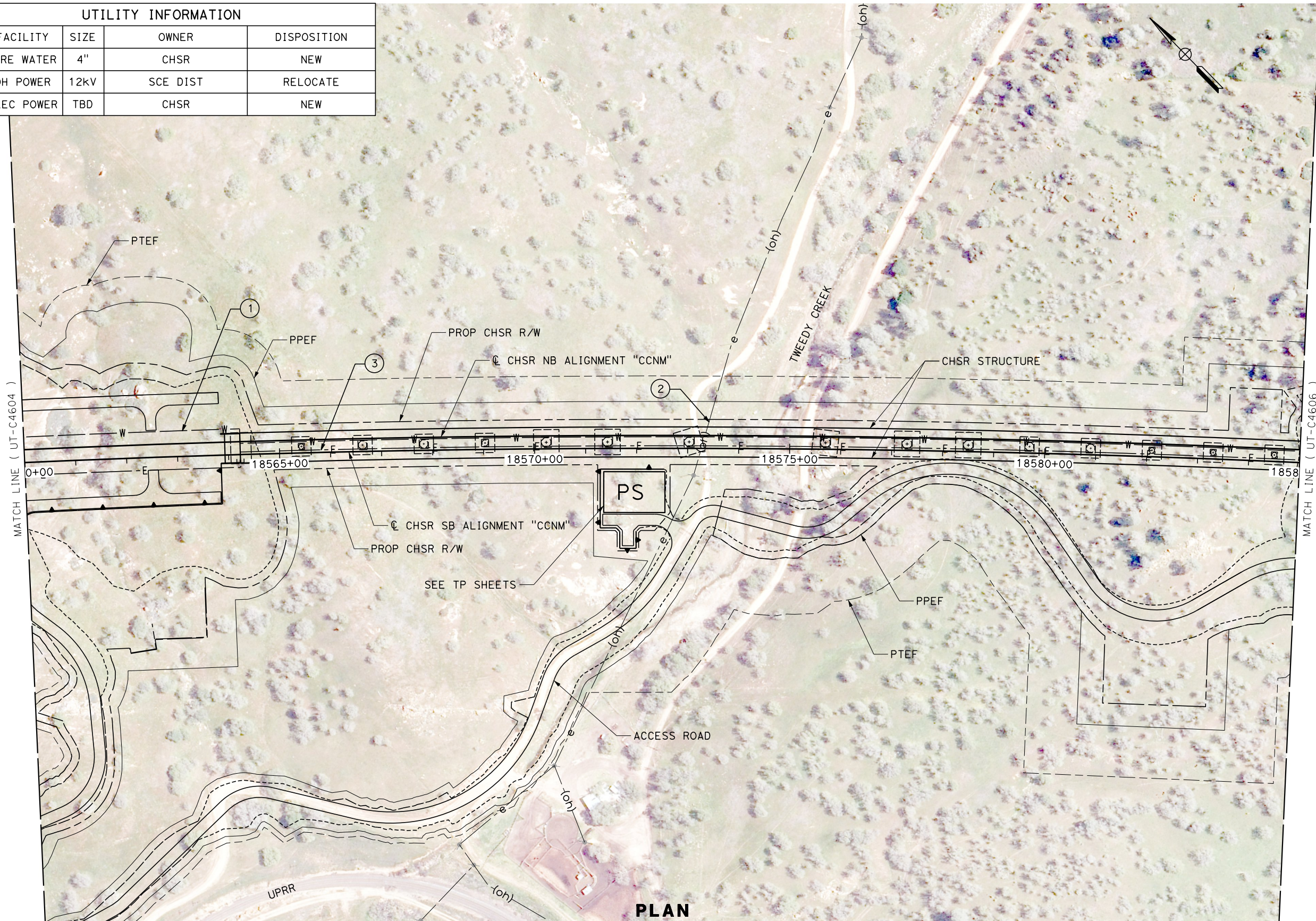
**NOT FOR
CONSTRUCTION**



**CALIFORNIA HIGH-SPEED RAIL PROJECT
BAKERSFIELD TO PALMDALE**
CCNM DESIGN OPTION
COMPOSITE UTILITY PLAN
STA 18535+00 TO 18560+00
PLAN

CONTRACT NO.
HSR13-44
DRAWING NO.
UT-C4604
SCALE
AS SHOWN
SHEET NO.
137

UTILITY INFORMATION				
No.	FACILITY	SIZE	OWNER	DISPOSITION
1	FIRE WATER	4"	CHSR	NEW
2	OH POWER	12KV	SCE DIST	RELOCATE
3	ELEC POWER	TBD	CHSR	NEW



PLAN

Projects\701206.00_CHSRBP\00_CADD\Sheet_Files\CCNM\UT_BP-UT-C4605
 1/12/2021 11:30:27 PM
 javier_lopez@tylin.com

REV	DATE	BY	CHK	APP	DESCRIPTION

DESIGNED BY
D. HOLMAN
 DRAWN BY
J. LOPEZ
 CHECKED BY
G. CAMPBELL
 IN CHARGE
G. CAMPBELL
 DATE
01/29/2021

**RECORD
 PECD
 SUBMITTAL**

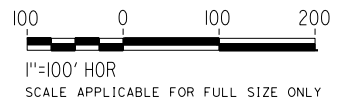
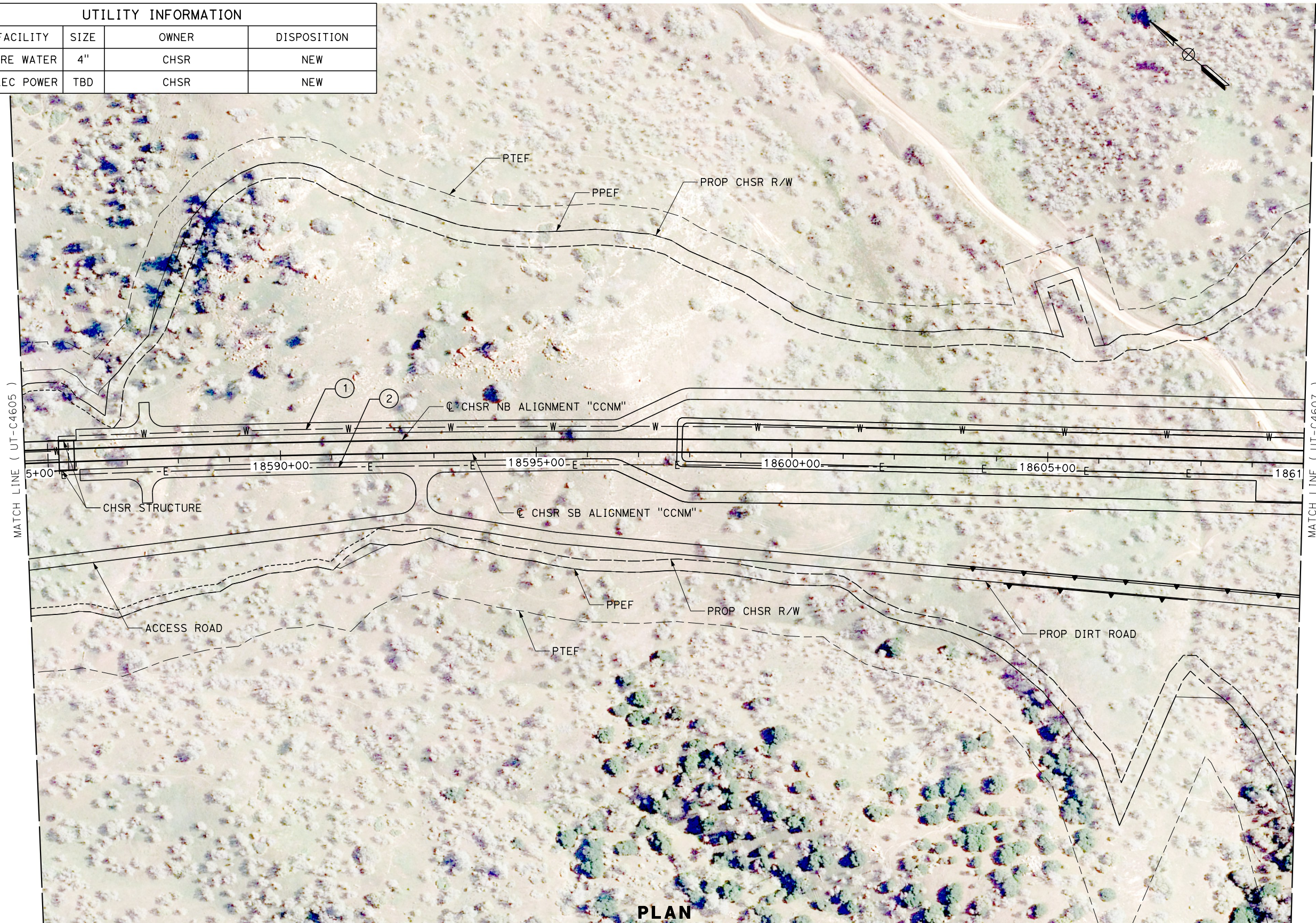
**NOT FOR
 CONSTRUCTION**



CALIFORNIA HIGH-SPEED RAIL PROJECT
BAKERSFIELD TO PALMDALE
 CCNM DESIGN OPTION
 COMPOSITE UTILITY PLAN
 STA 18560+00 TO 18585+00
PLAN

CONTRACT NO.
HSR13-44
 DRAWING NO.
UT-C4605
 SCALE
AS SHOWN
 SHEET NO.
138

UTILITY INFORMATION				
No.	FACILITY	SIZE	OWNER	DISPOSITION
1	FIRE WATER	4"	CHSR	NEW
2	ELEC POWER	TBD	CHSR	NEW



PLAN

Projects\701206.00_CHSRBP\00_CADD\Sheet_Files\CCNM\UT\BP-UT-C4606 1/12/2021 11:30:29 PM javier_lopez@tylin.com

REV	DATE	BY	CHK	APP	DESCRIPTION

DESIGNED BY
D. HOLMAN
DRAWN BY
J. LOPEZ
CHECKED BY
G. CAMPBELL
IN CHARGE
G. CAMPBELL
DATE
01/29/2021

**RECORD
PEPD
SUBMITTAL**

**NOT FOR
CONSTRUCTION**

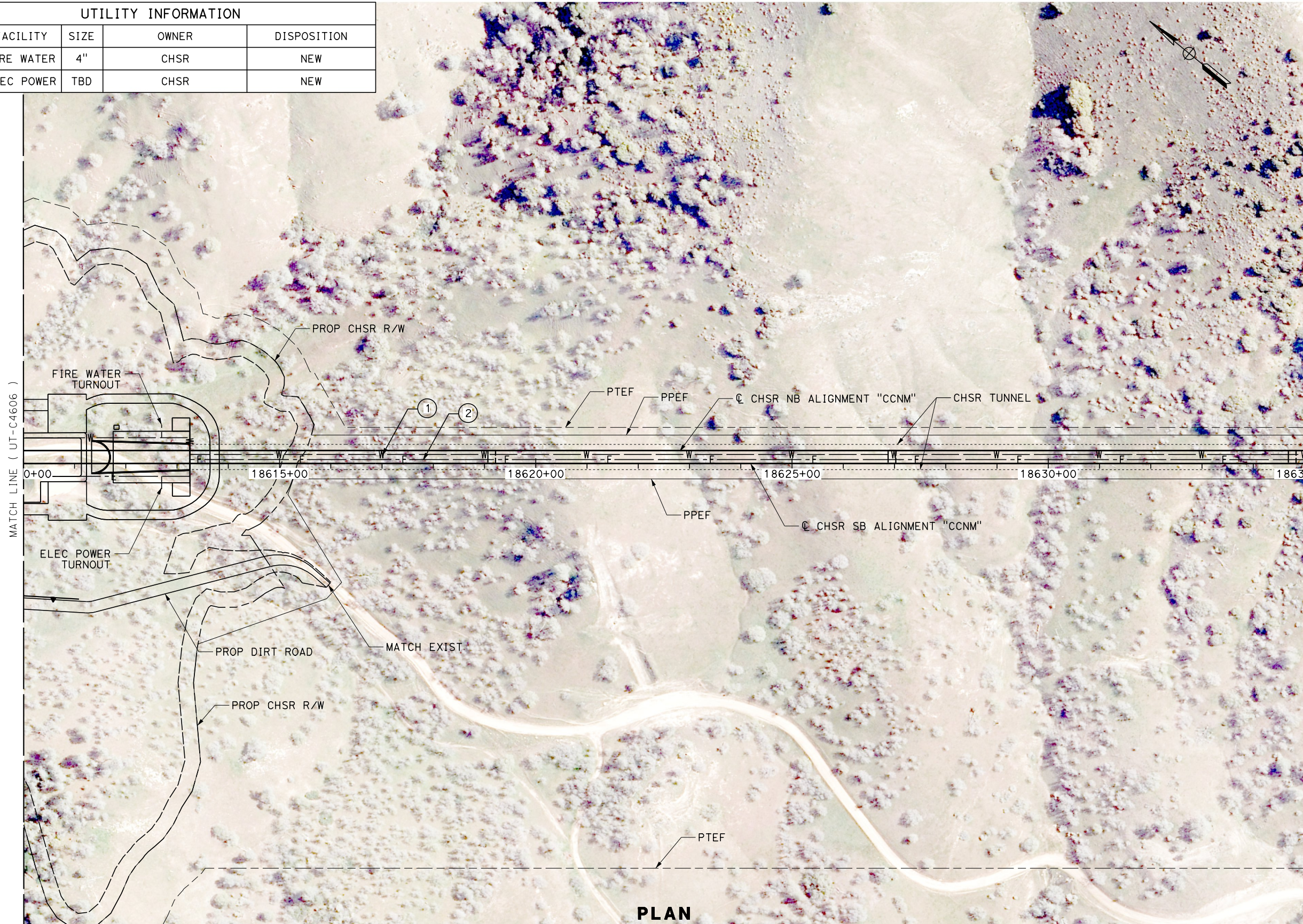


**CALIFORNIA HIGH-SPEED RAIL PROJECT
BAKERSFIELD TO PALMDALE**

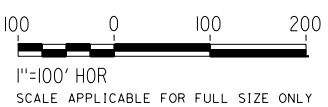
CCNM DESIGN OPTION
COMPOSITE UTILITY PLAN
STA 18585+00 TO 18610+00
PLAN

CONTRACT NO.
HSR13-44
DRAWING NO.
UT-C4606
SCALE
AS SHOWN
SHEET NO.
139

UTILITY INFORMATION				
No.	FACILITY	SIZE	OWNER	DISPOSITION
1	FIRE WATER	4"	CHSR	NEW
2	ELEC POWER	TBD	CHSR	NEW



PLAN



Projects\701206.00_CHSRBP\00_CADD\Sheet Files\CCNM\UT\BP-UT-C4607 1/12/2021 11:30:39 PM javier_lopez@tylin.com

REV	DATE	BY	CHK	APP	DESCRIPTION

DESIGNED BY
D. HOLMAN
DRAWN BY
J. LOPEZ
CHECKED BY
G. CAMPBELL
IN CHARGE
G. CAMPBELL
DATE
01/29/2021

**RECORD
PEPD
SUBMITTAL**

**NOT FOR
CONSTRUCTION**

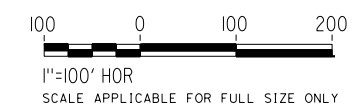
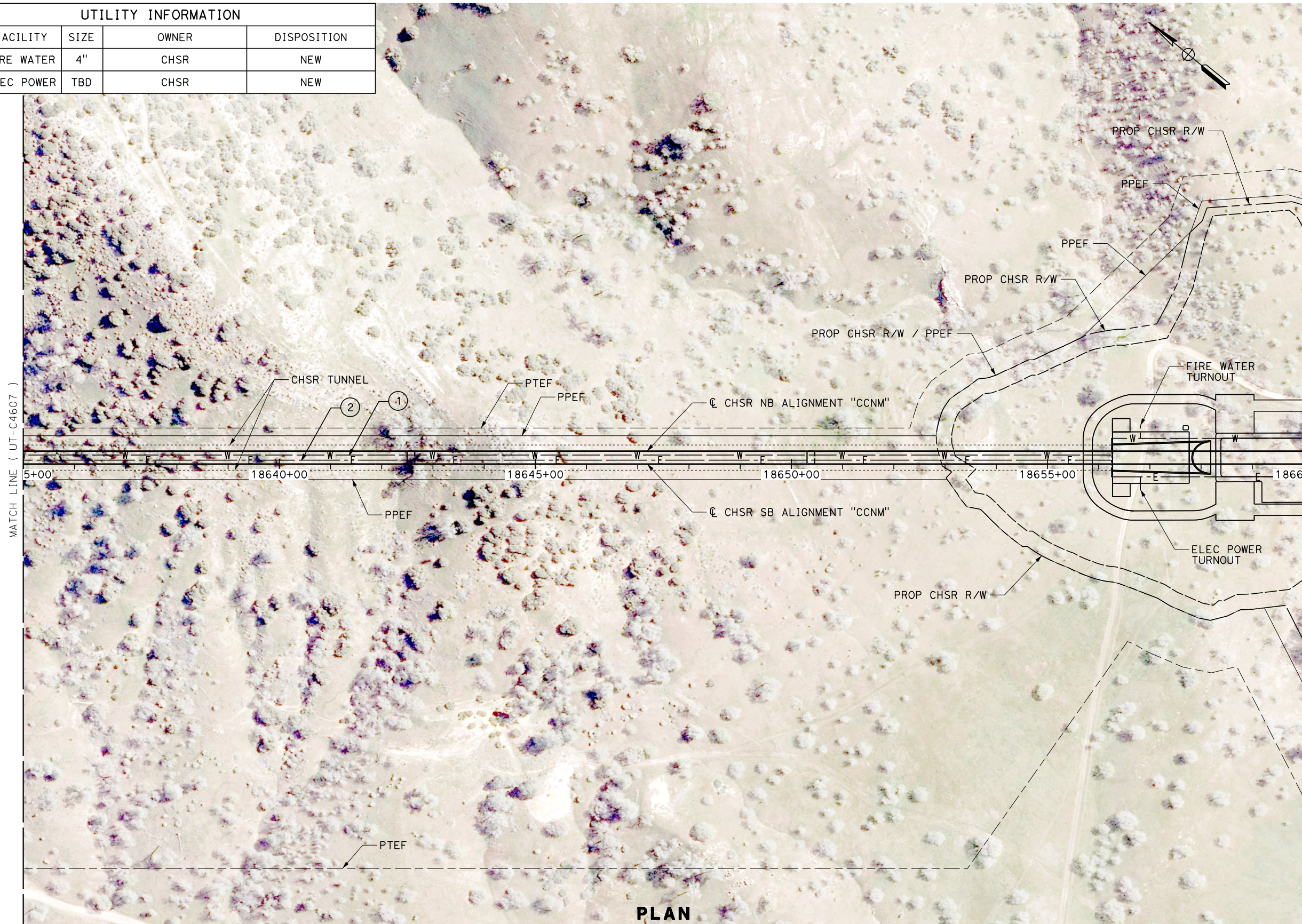


**CALIFORNIA HIGH-SPEED RAIL PROJECT
BAKERSFIELD TO PALMDALE**

CCNM DESIGN OPTION
COMPOSITE UTILITY PLAN
STA 18610+00 TO 18635+00
PLAN

CONTRACT NO.
HSR13-44
DRAWING NO.
UT-C4607
SCALE
AS SHOWN
SHEET NO.
140

UTILITY INFORMATION				
No.	FACILITY	SIZE	OWNER	DISPOSITION
1	FIRE WATER	4"	CHSR	NEW
2	ELEC POWER	TBD	CHSR	NEW



PLAN

Projects\701206\00_CHSRBP\00_CADD\Sheet Files\CCNM\UT\BP-UT-C4608 1/12/2021 11:30:46 PM javier_lopez@tylin.com

REV	DATE	BY	CHK	APP	DESCRIPTION

DESIGNED BY
D. HOLMAN
DRAWN BY
J. LOPEZ
CHECKED BY
G. CAMPBELL
IN CHARGE
G. CAMPBELL
DATE
01/29/2021

**RECORD
PEPD
SUBMITTAL**

**NOT FOR
CONSTRUCTION**

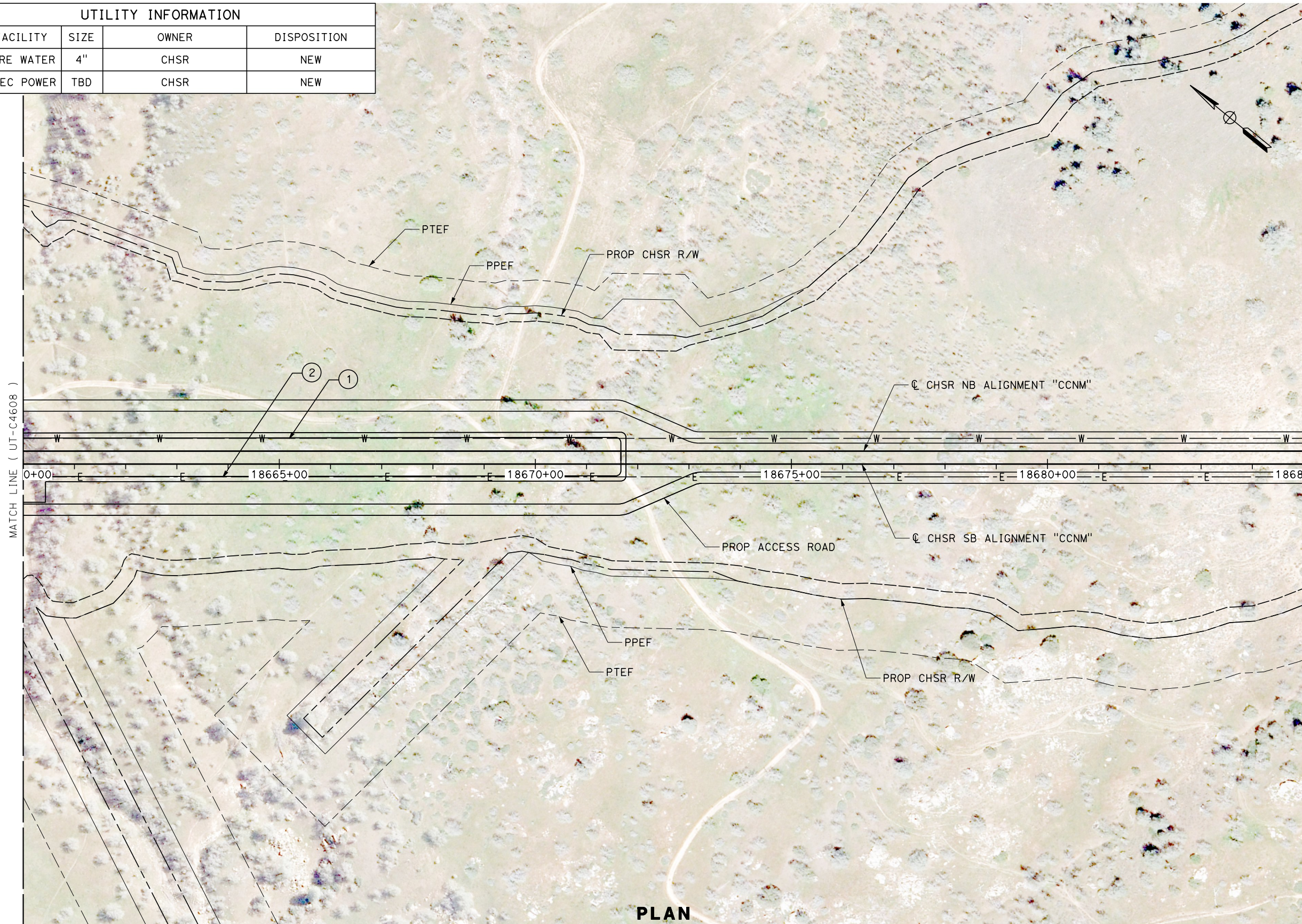


**CALIFORNIA HIGH-SPEED RAIL PROJECT
BAKERSFIELD TO PALMDALE**

CCNM DESIGN OPTION
COMPOSITE UTILITY PLAN
STA 18635+00 TO 18660+00
PLAN

CONTRACT NO.
HSR13-44
DRAWING NO.
UT-C4608
SCALE
AS SHOWN
SHEET NO.
141

UTILITY INFORMATION				
No.	FACILITY	SIZE	OWNER	DISPOSITION
1	FIRE WATER	4"	CHSR	NEW
2	ELEC POWER	TBD	CHSR	NEW



PLAN

Projects\701206\00_CHSRBP\00_CADD\Sheet Files\CCNM\UT\BP-UT-C4609 1/12/2021 11:36:33 PM javier_lopez@tylin.com

REV	DATE	BY	CHK	APP	DESCRIPTION

DESIGNED BY
D. HOLMAN
DRAWN BY
J. LOPEZ
CHECKED BY
G. CAMPBELL
IN CHARGE
G. CAMPBELL
DATE
01/29/2021

**RECORD
PEPD
SUBMITTAL**

**NOT FOR
CONSTRUCTION**



**CALIFORNIA HIGH-SPEED RAIL PROJECT
BAKERSFIELD TO PALMDALE**

CCNM DESIGN OPTION
COMPOSITE UTILITY PLAN
STA 18660+00 TO 18685+00
PLAN

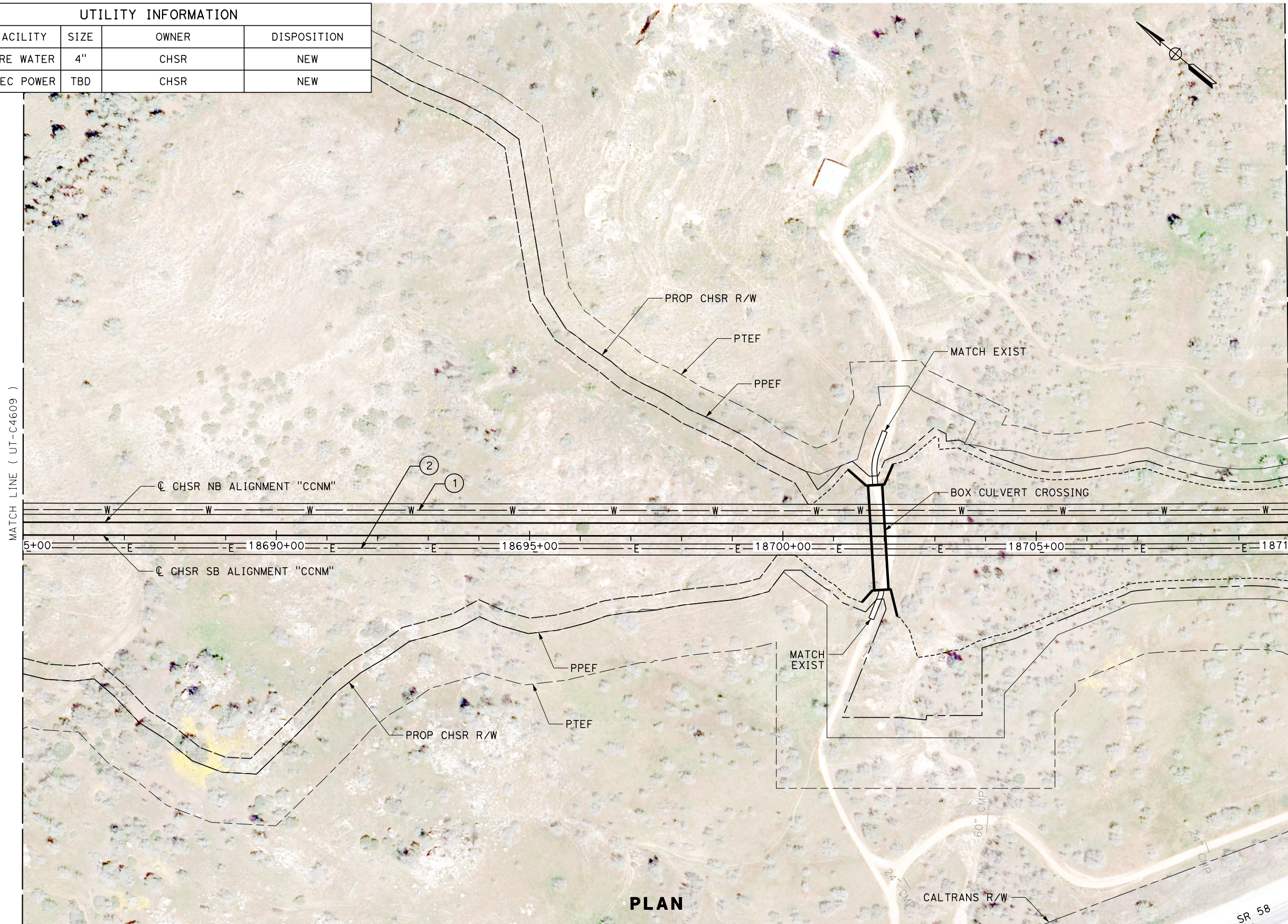
CONTRACT NO.
HSR13-44
DRAWING NO.
UT-C4609
SCALE
AS SHOWN
SHEET NO.
142

Projects\701206.00_CHSRBP\00_CADD\Sheet_Files\CCNM\UT\BP-UT-C4610

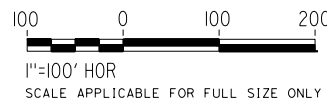
1/12/2021 11:30:52 PM

javier_lopez@tylin.com

UTILITY INFORMATION				
No.	FACILITY	SIZE	OWNER	DISPOSITION
1	FIRE WATER	4"	CHSR	NEW
2	ELEC POWER	TBD	CHSR	NEW



PLAN



REV	DATE	BY	CHK	APP	DESCRIPTION

DESIGNED BY
D. HOLMAN
DRAWN BY
J. LOPEZ
CHECKED BY
G. CAMPBELL
IN CHARGE
G. CAMPBELL
DATE
01/29/2021

**RECORD
PEPD
SUBMITTAL**

**NOT FOR
CONSTRUCTION**

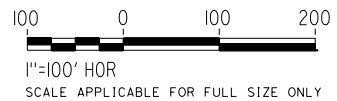
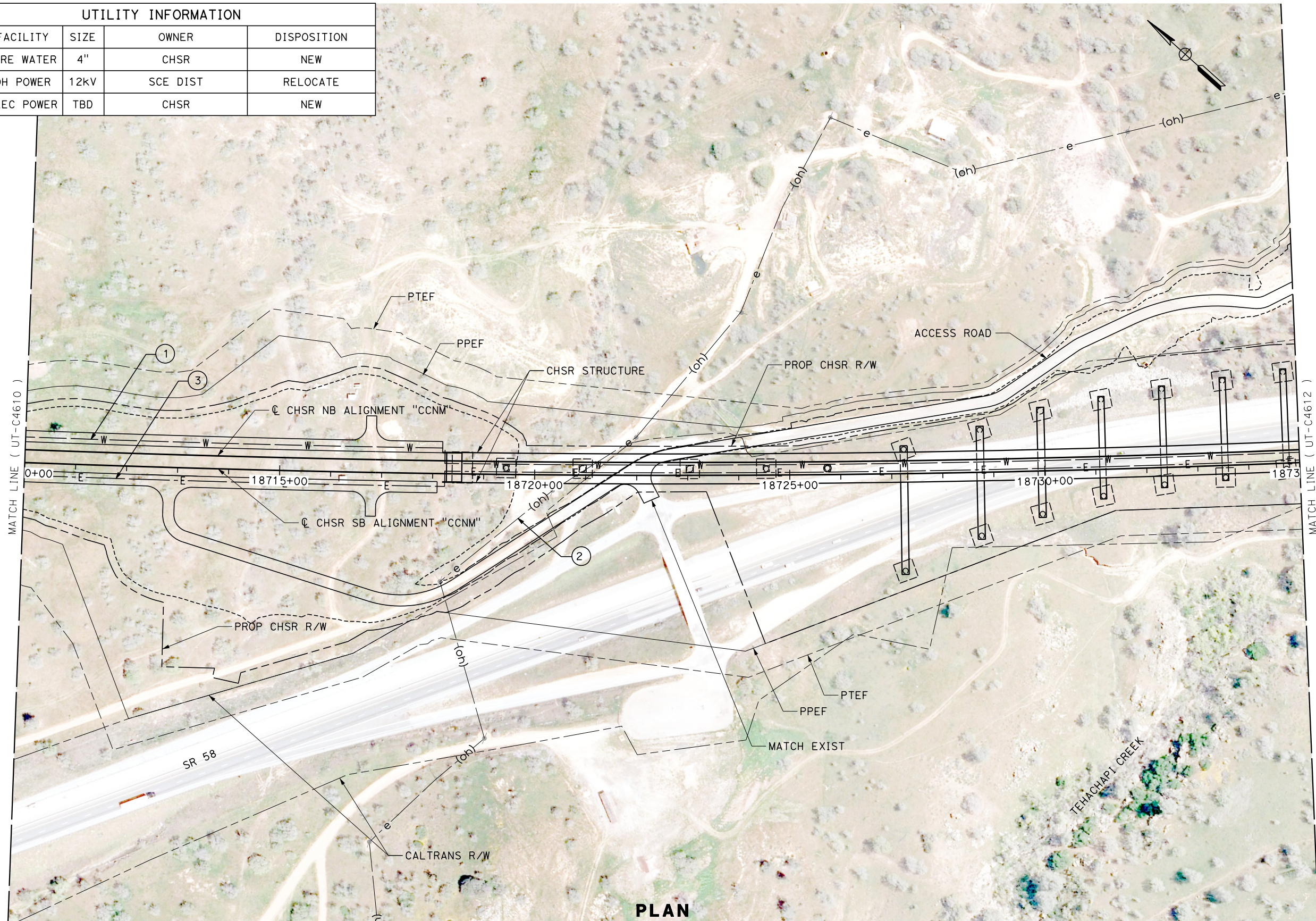


**CALIFORNIA HIGH-SPEED RAIL PROJECT
BAKERSFIELD TO PALMDALE**

CCNM DESIGN OPTION
COMPOSITE UTILITY PLAN
STA 18685+00 TO 18710+00
PLAN

CONTRACT NO.
HSR13-44
DRAWING NO.
UT-C4610
SCALE
AS SHOWN
SHEET NO.
143

UTILITY INFORMATION				
No.	FACILITY	SIZE	OWNER	DISPOSITION
1	FIRE WATER	4"	CHSR	NEW
2	OH POWER	12kV	SCE DIST	RELOCATE
3	ELEC POWER	TBD	CHSR	NEW



PLAN

Projects\701206\00_CHSRBP\00_CADD\Sheet_Files\CCNM\UT\BP-UT-C4611
 1/12/2021 11:38:44 PM
 javier_lopez@tylin.com

REV	DATE	BY	CHK	APP	DESCRIPTION

DESIGNED BY
D. HOLMAN
 DRAWN BY
J. LOPEZ
 CHECKED BY
G. CAMPBELL
 IN CHARGE
G. CAMPBELL
 DATE
01/29/2021

**RECORD
 PECD
 SUBMITTAL**

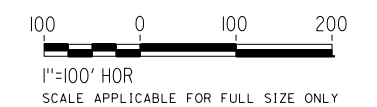
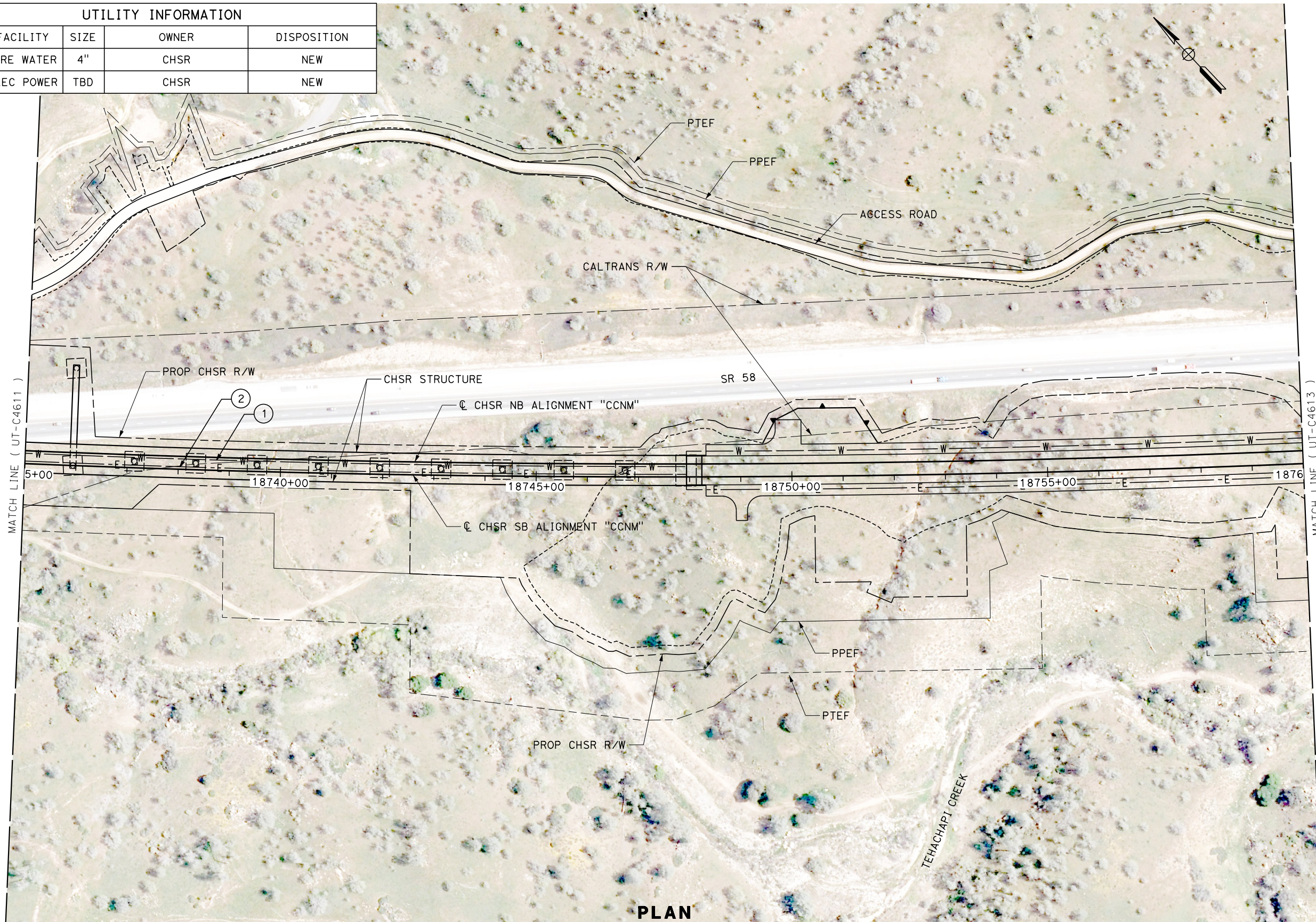
**NOT FOR
 CONSTRUCTION**



CALIFORNIA HIGH-SPEED RAIL PROJECT
BAKERSFIELD TO PALMDALE
 CCNM DESIGN OPTION
 COMPOSITE UTILITY PLAN
 STA 18710+00 TO 18735+00
PLAN

CONTRACT NO.
HSR13-44
 DRAWING NO.
UT-C4611
 SCALE
AS SHOWN
 SHEET NO.
144

UTILITY INFORMATION				
NO.	FACILITY	SIZE	OWNER	DISPOSITION
1	FIRE WATER	4"	CHSR	NEW
2	ELEC POWER	TBD	CHSR	NEW



PLAN

Projects\701206.00_CHSRBP\00_CADD\Sheet_Files\CCNM\UT\BP-UT-C4612 1/12/2021 11:31:00 PM javier_lopez@tylin.com

REV	DATE	BY	CHK	APP	DESCRIPTION

DESIGNED BY
D. HOLMAN
DRAWN BY
J. LOPEZ
CHECKED BY
G. CAMPBELL
IN CHARGE
G. CAMPBELL
DATE
01/29/2021

**RECORD
PEPD
SUBMITTAL**

**NOT FOR
CONSTRUCTION**

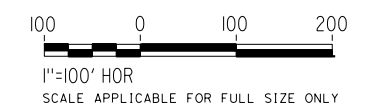
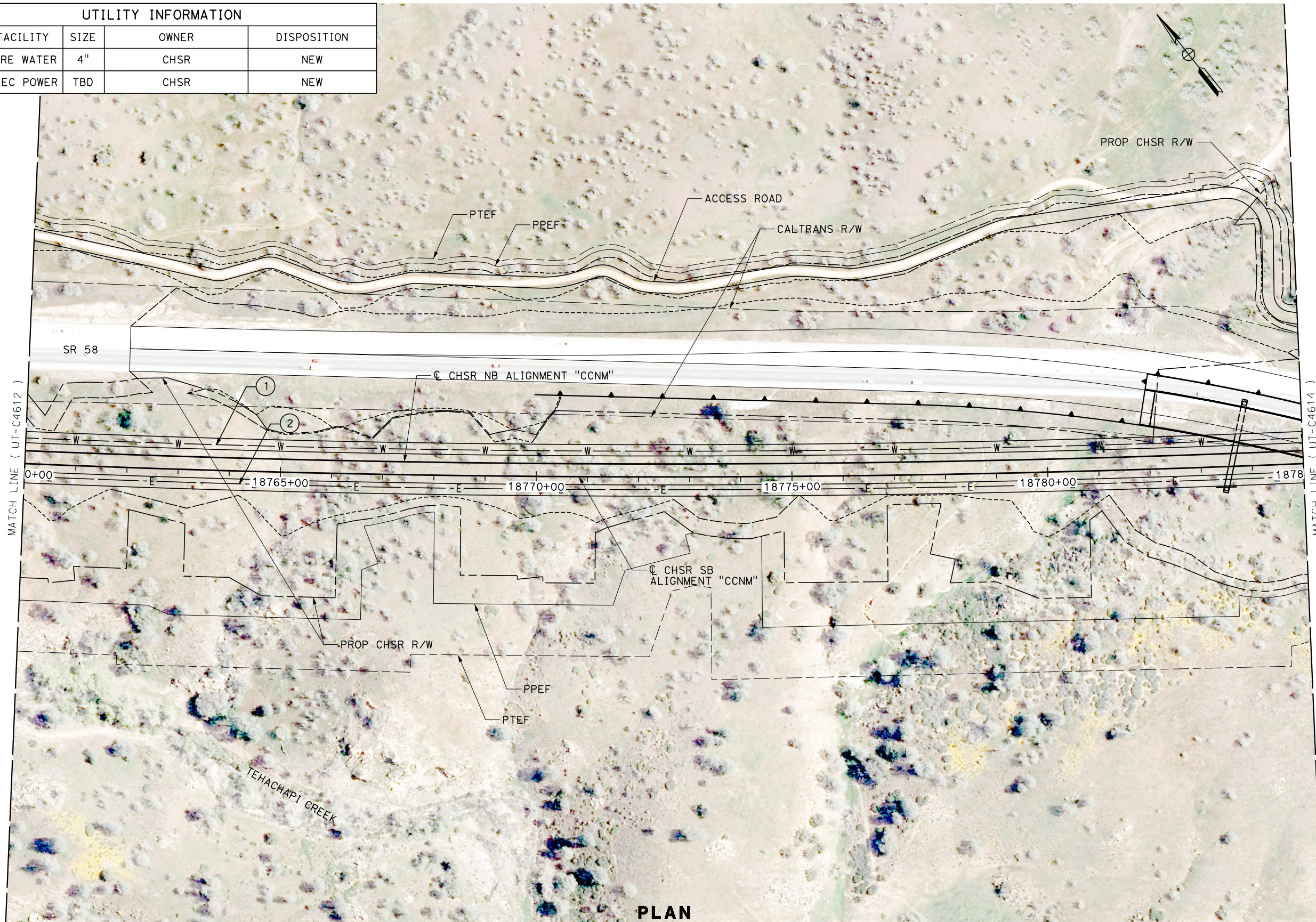


**CALIFORNIA HIGH-SPEED RAIL PROJECT
BAKERSFIELD TO PALMDALE**

CCNM DESIGN OPTION
COMPOSITE UTILITY PLAN
STA 18735+00 TO 18760+00
PLAN

CONTRACT NO.
HSR13-44
DRAWING NO.
UT-C4612
SCALE
AS SHOWN
SHEET NO.
145

UTILITY INFORMATION				
NO.	FACILITY	SIZE	OWNER	DISPOSITION
1	FIRE WATER	4"	CHSR	NEW
2	ELEC POWER	TBD	CHSR	NEW



PLAN

Projects\701206.00_CHSRBP\00_CADD\Sheet_Files\CCNM\UT\BP-UT-C4613 1/12/2021 11:36:57 PM javier_lopez@tylin.com

REV	DATE	BY	CHK	APP	DESCRIPTION

DESIGNED BY
D. HOLMAN
DRAWN BY
J. LOPEZ
CHECKED BY
G. CAMPBELL
IN CHARGE
G. CAMPBELL
DATE
01/29/2021

**RECORD
PEPD
SUBMITTAL**

**NOT FOR
CONSTRUCTION**

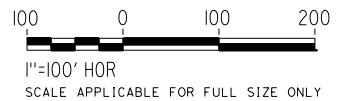
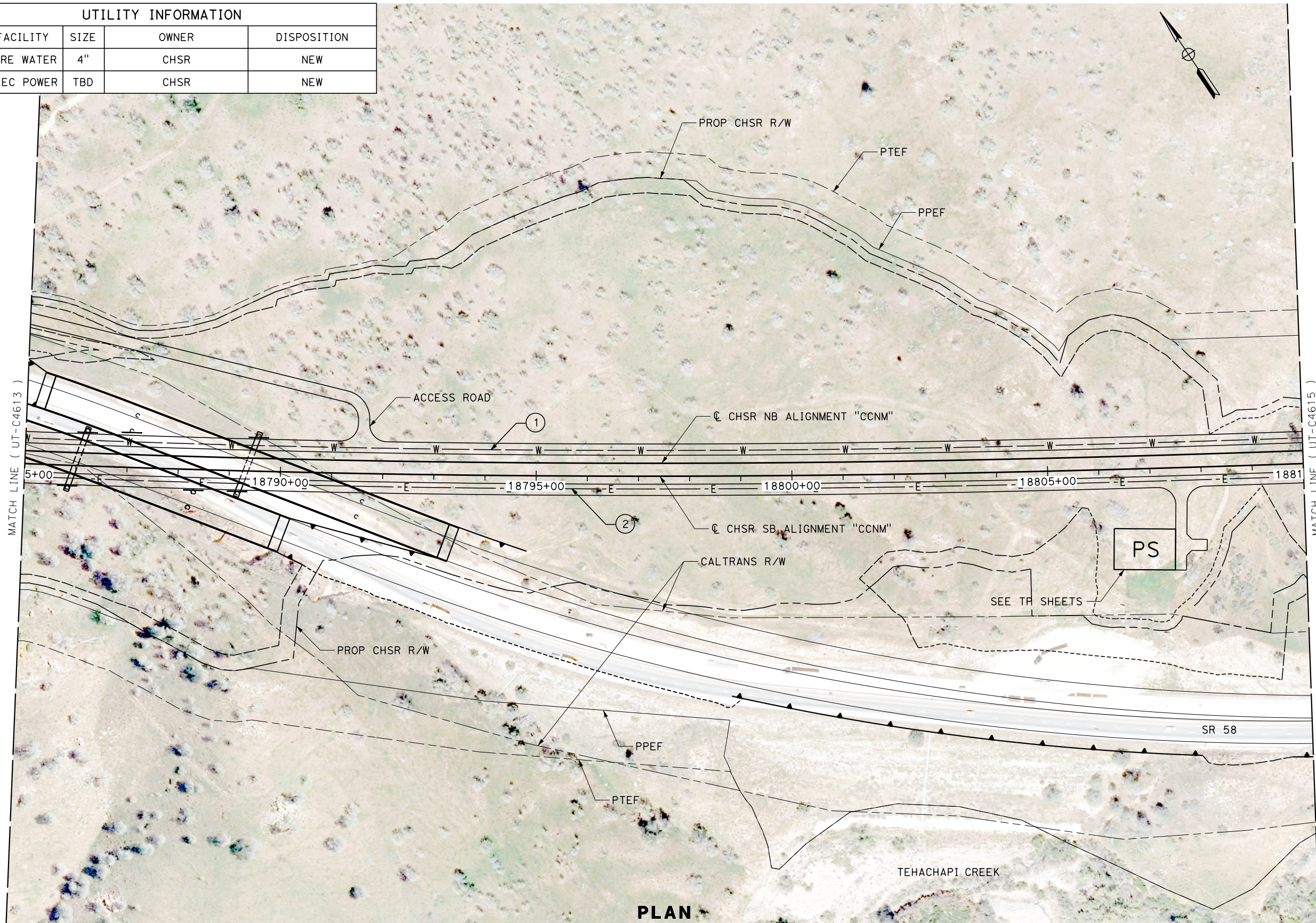


**CALIFORNIA HIGH-SPEED RAIL PROJECT
BAKERSFIELD TO PALMDALE**

CCNM DESIGN OPTION
COMPOSITE UTILITY PLAN
STA 18760+00 TO 18785+00
PLAN

CONTRACT NO.
HSR13-44
DRAWING NO.
UT-C4613
SCALE
AS SHOWN
SHEET NO.
146

UTILITY INFORMATION				
No.	FACILITY	SIZE	OWNER	DISPOSITION
1	FIRE WATER	4"	CHSR	NEW
2	ELEC POWER	TBD	CHSR	NEW



PLAN

Projects\701206.00_CHSRBP\00_CADD\Sheet_Files\CCNM\UT\BP-UT-C4614 1/12/2021 11:31:00 PM javier_lopez@tylin.com

REV	DATE	BY	CHK	APP	DESCRIPTION

DESIGNED BY
D. HOLMAN
DRAWN BY
J. LOPEZ
CHECKED BY
G. CAMPBELL
IN CHARGE
G. CAMPBELL
DATE
01/29/2021

**RECORD
PEPD
SUBMITTAL**

**NOT FOR
CONSTRUCTION**

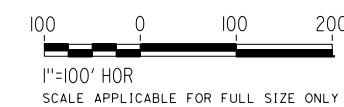
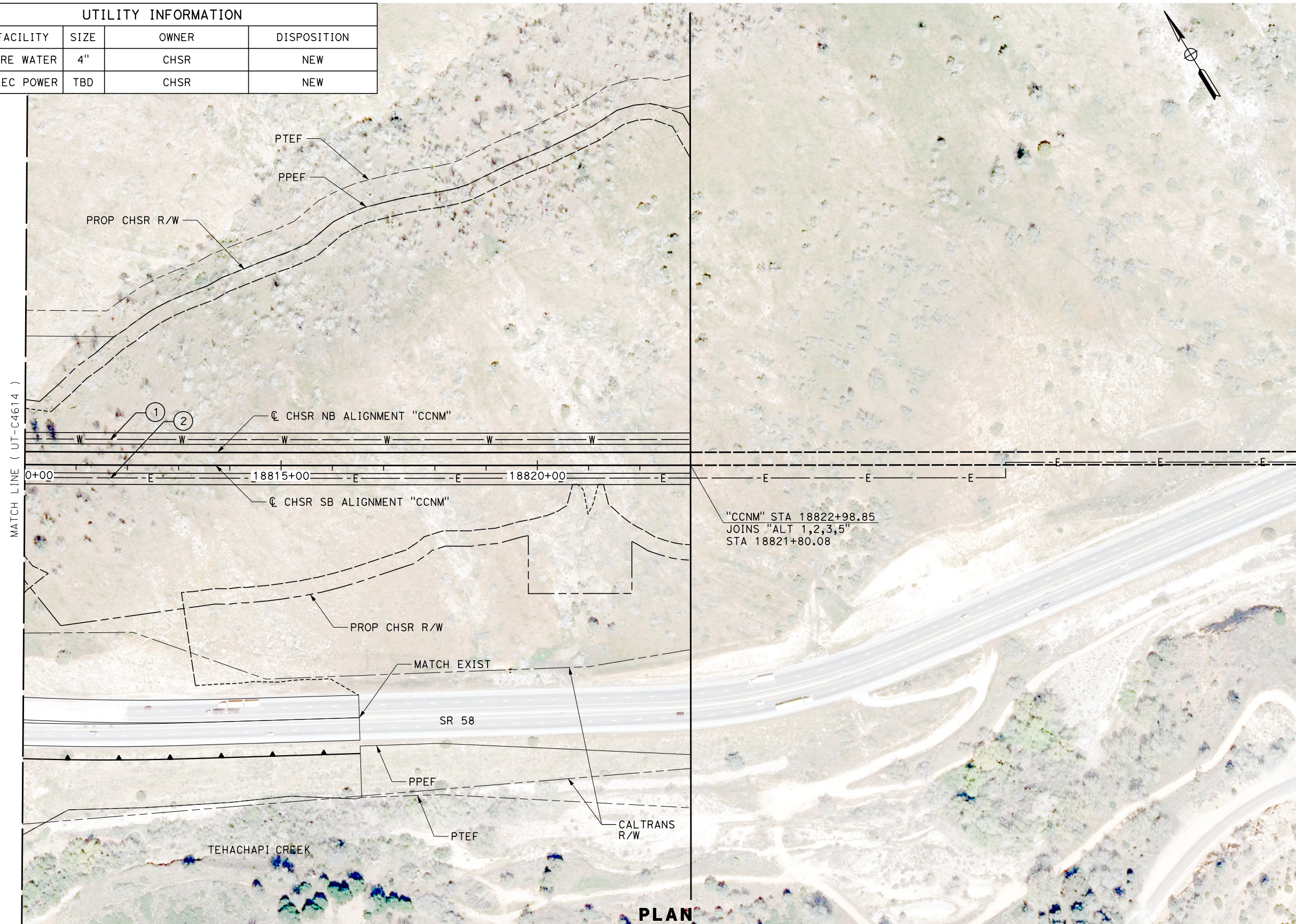


**CALIFORNIA HIGH-SPEED RAIL PROJECT
BAKERSFIELD TO PALMDALE**

CCNM DESIGN OPTION
COMPOSITE UTILITY PLAN
STA 18785+00 TO 18810+00
PLAN

CONTRACT NO.
HSR13-44
DRAWING NO.
UT-C4614
SCALE
AS SHOWN
SHEET NO.
147

UTILITY INFORMATION				
No.	FACILITY	SIZE	OWNER	DISPOSITION
1	FIRE WATER	4"	CHSR	NEW
2	ELEC POWER	TBD	CHSR	NEW



Projects\701206.00_CHSRBP\00_CADD\Sheet Files\CCNM\UT\BP-UT-C4615 1/12/2021 11:36:43 PM javier_lopez@tylin.com

REV	DATE	BY	CHK	APP	DESCRIPTION

DESIGNED BY
D. HOLMAN
DRAWN BY
J. LOPEZ
CHECKED BY
G. CAMPBELL
IN CHARGE
G. CAMPBELL
DATE
01/29/2021

**RECORD
PEPD
SUBMITTAL**

**NOT FOR
CONSTRUCTION**

TYLIN INTERNATIONAL



**CALIFORNIA HIGH-SPEED RAIL PROJECT
BAKERSFIELD TO PALMDALE**

CCNM DESIGN OPTION
COMPOSITE UTILITY PLAN
STA 18810+00 TO 18822+99
PLAN

CONTRACT NO.
HSR13-44
DRAWING NO.
UT-C4615
SCALE
AS SHOWN
SHEET NO.
148