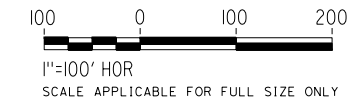
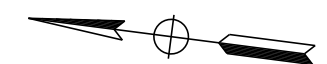
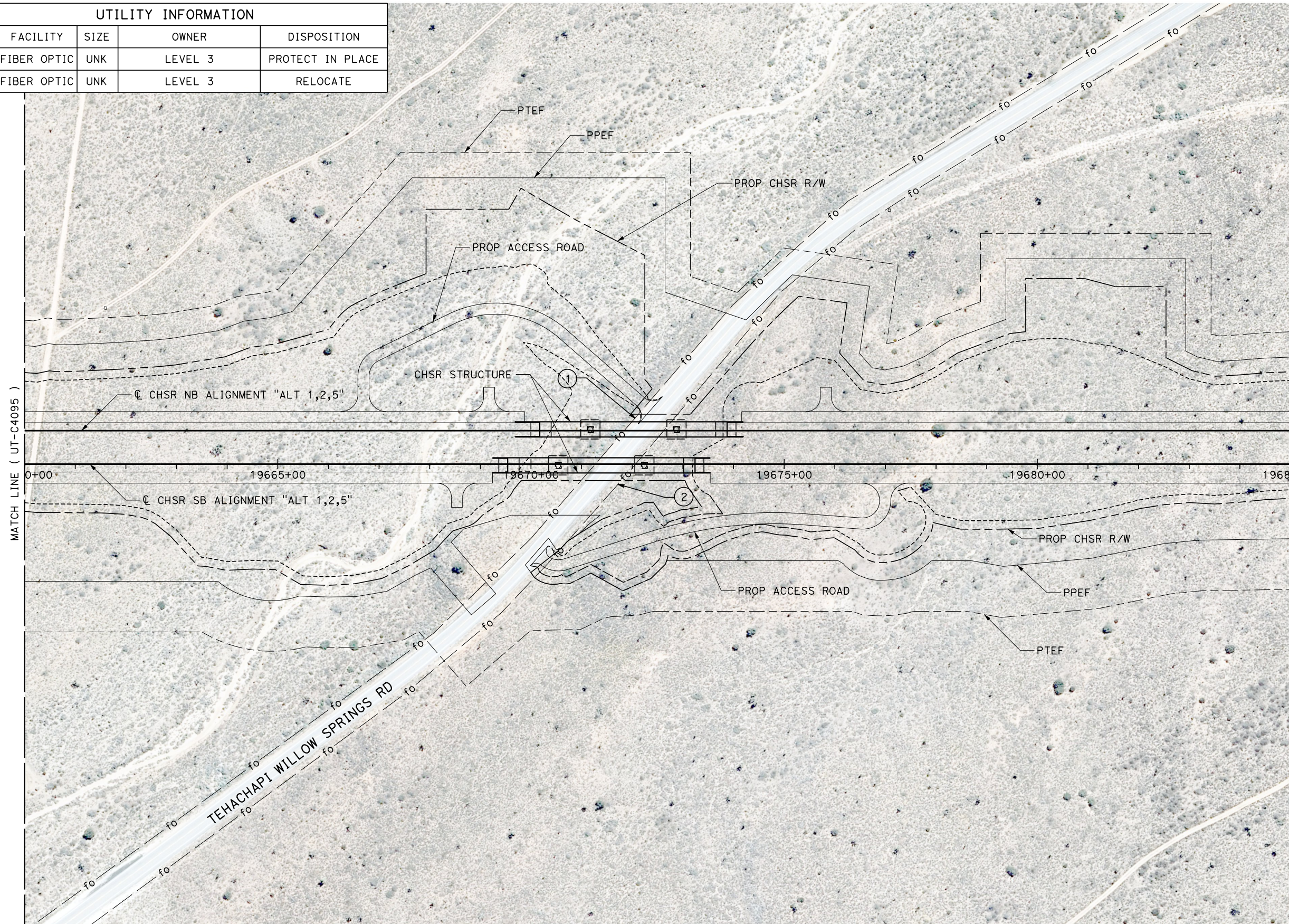


UTILITY INFORMATION				
#	FACILITY	SIZE	OWNER	DISPOSITION
1	FIBER OPTIC	UNK	LEVEL 3	PROTECT IN PLACE
2	FIBER OPTIC	UNK	LEVEL 3	RELOCATE



Projects\701206.00\_CHSRBP\00\_CADD\Sheet Files\UT\1\1\_NBP-UT-C4096

1/23/2021 3:09:42 AM

jcs\_user\_17609

REV	DATE	BY	CHK	APP	DESCRIPTION

DESIGNED BY  
**D. HOLMAN**

DRAWN BY  
**J. LOPEZ**

CHECKED BY  
**G. CAMPBELL**

IN CHARGE  
**G. CAMPBELL**

DATE  
**01/29/2021**

**RECORD SET**  
**PEPD**  
**SUBMITTAL**

**NOT FOR**  
**CONSTRUCTION**



**CALIFORNIA HIGH-SPEED RAIL PROJECT**  
**BAKERSFIELD TO PALMDALE**  
COMPOSITE UTILITY PLANS  
ALTERNATIVE 1,2,5  
STA 19660+00 TO 19685+00

CONTRACT NO.  
HSR13-44

DRAWING NO.  
UT-C4096

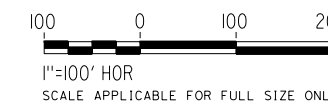
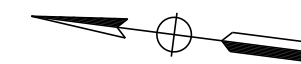
SCALE  
AS SHOWN

SHEET NO.  
1218

Projects\T01206.00\_CHSRBP\00\_CADD\Sheet Files\UT\1\1\_NBP\_UT-C4097

1/23/2021 3:09:38 AM

ics\_user\_17609



REV	DATE	BY	CHK	APP	DESCRIPTION

DESIGNED BY  
**D. HOLMAN**  
DRAWN BY  
**J. LOPEZ**  
CHECKED BY  
**G. CAMPBELL**  
IN CHARGE  
**G. CAMPBELL**  
DATE  
**01/29/2021**

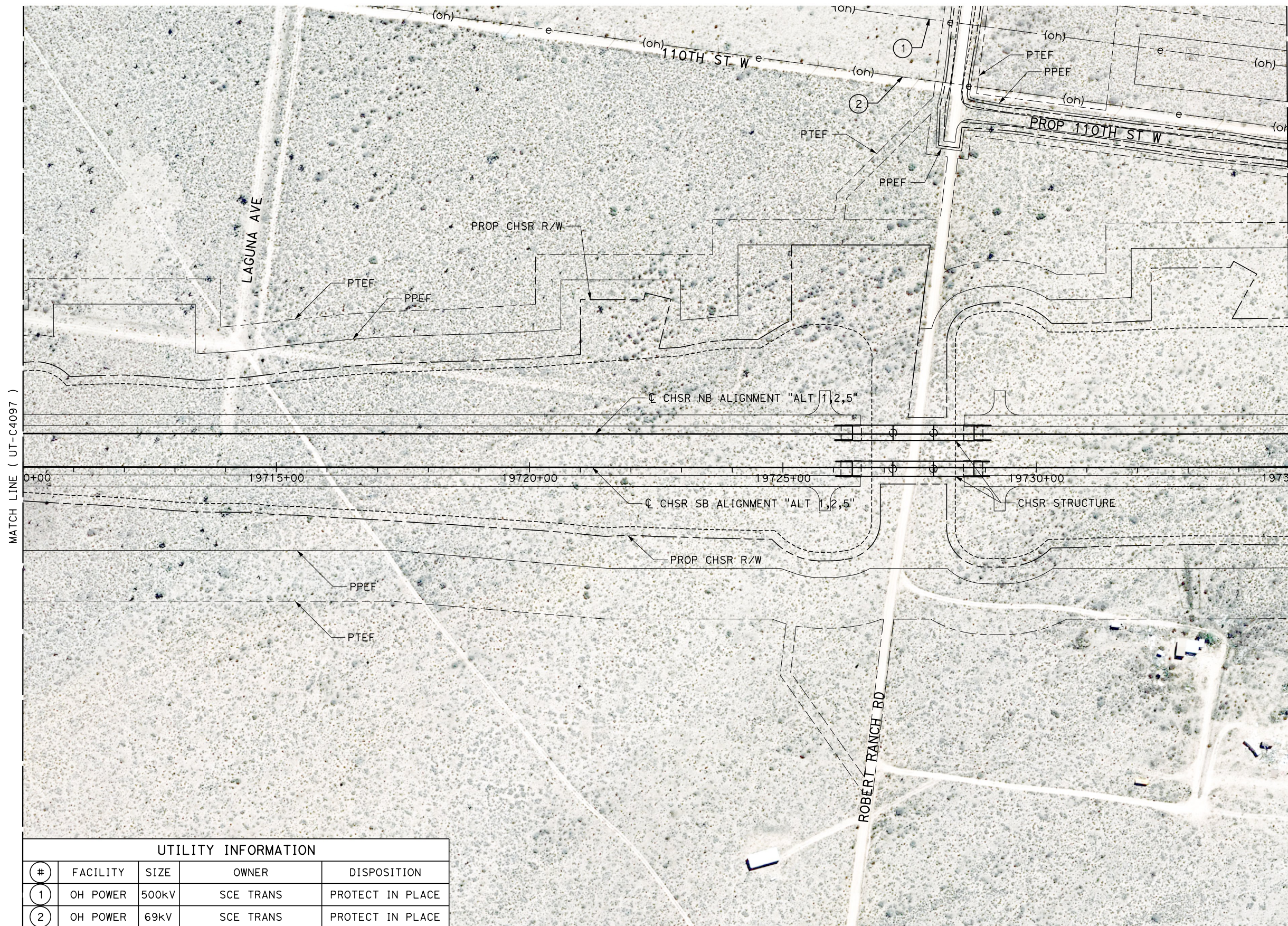
**RECORD SET**  
**PEPD**  
**SUBMITTAL**

**NOT FOR**  
**CONSTRUCTION**



**CALIFORNIA HIGH-SPEED RAIL PROJECT**  
**BAKERSFIELD TO PALMDALE**  
COMPOSITE UTILITY PLANS  
ALTERNATIVE 1,2,5  
STA 19685+00 TO 19710+00

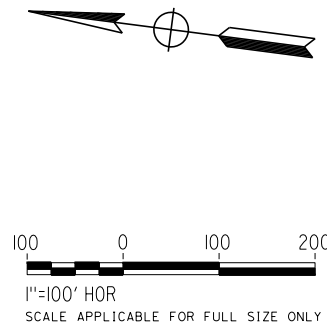
CONTRACT NO.  
HSR13-44  
DRAWING NO.  
UT-C4097  
SCALE  
AS SHOWN  
SHEET NO.  
1219



MATCH LINE ( UT-C4097 )

MATCH LINE ( UT-C4099 )

UTILITY INFORMATION				
#	FACILITY	SIZE	OWNER	DISPOSITION
1	OH POWER	500kV	SCE TRANS	PROTECT IN PLACE
2	OH POWER	69kV	SCE TRANS	PROTECT IN PLACE



REV	DATE	BY	CHK	APP	DESCRIPTION

DESIGNED BY  
**D. HOLMAN**  
DRAWN BY  
**J. LOPEZ**  
CHECKED BY  
**G. CAMPBELL**  
IN CHARGE  
**G. CAMPBELL**  
DATE  
**01/29/2021**

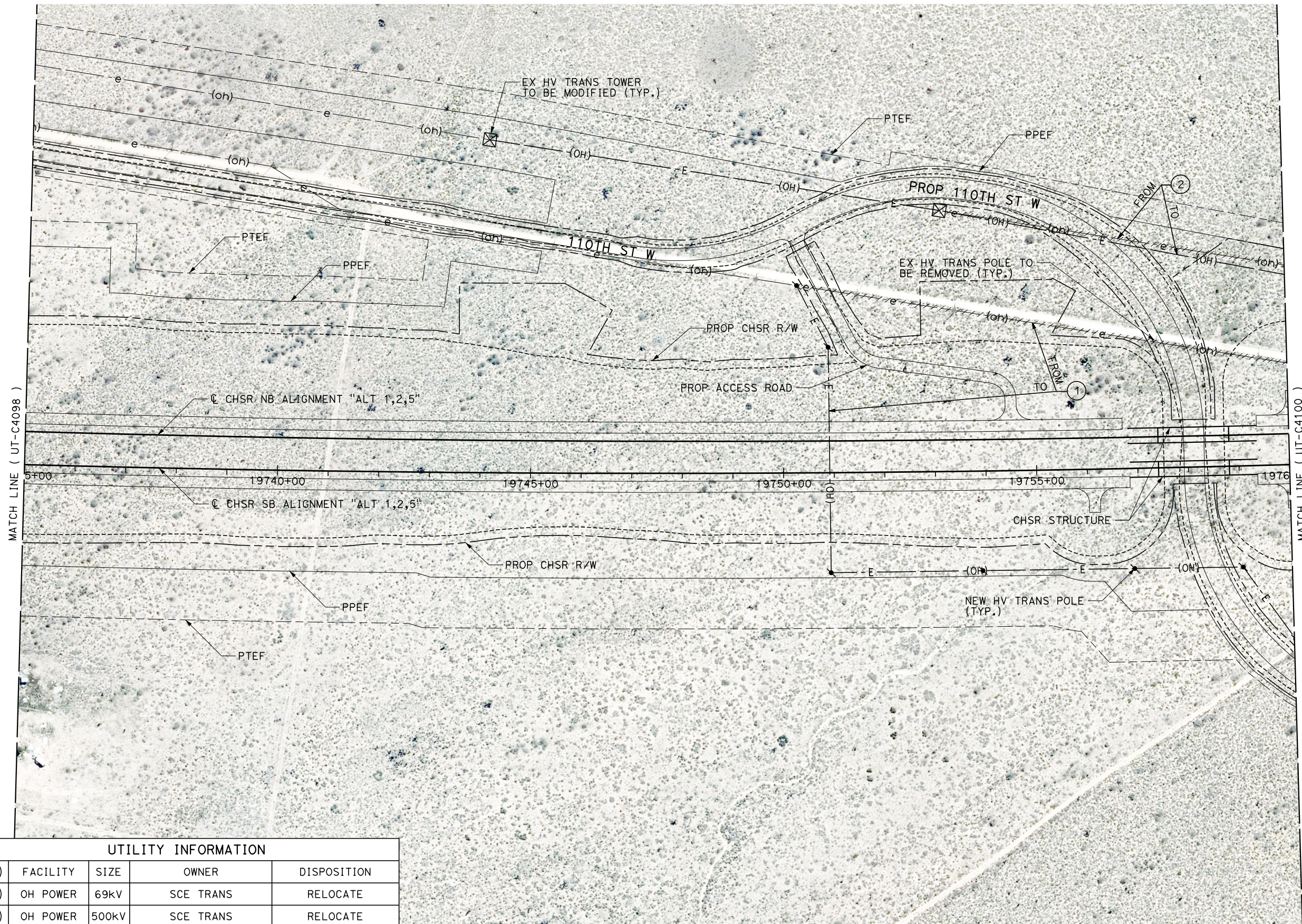
**RECORD SET**  
**PEPD**  
**SUBMITTAL**

**NOT FOR**  
**CONSTRUCTION**

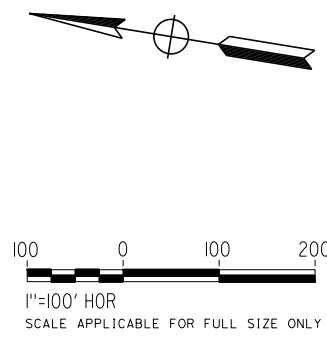


**CALIFORNIA HIGH-SPEED RAIL PROJECT**  
**BAKERSFIELD TO PALMDALE**  
COMPOSITE UTILITY PLANS  
ALTERNATIVE 1,2,5  
STA 19710+00 TO 19735+00

CONTRACT NO.  
HSR13-44  
DRAWING NO.  
UT-C4098  
SCALE  
AS SHOWN  
SHEET NO.  
1220



UTILITY INFORMATION				
#	FACILITY	SIZE	OWNER	DISPOSITION
1	OH POWER	69kV	SCE TRANS	RELOCATE
2	OH POWER	500kV	SCE TRANS	RELOCATE



REV	DATE	BY	CHK	APP	DESCRIPTION

DESIGNED BY  
**D. HOLMAN**  
DRAWN BY  
**J. LOPEZ**  
CHECKED BY  
**G. CAMPBELL**  
IN CHARGE  
**G. CAMPBELL**  
DATE  
**01/29/2021**

**RECORD SET**  
**PEPD**  
**SUBMITTAL**

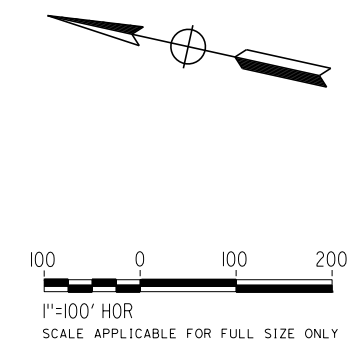
**NOT FOR**  
**CONSTRUCTION**



**CALIFORNIA HIGH-SPEED RAIL PROJECT**  
**BAKERSFIELD TO PALMDALE**  
COMPOSITE UTILITY PLANS  
ALTERNATIVE 1,2,5  
STA 19735+00 TO 19760+00

CONTRACT NO.  
HSR13-44  
DRAWING NO.  
UT-C4099  
SCALE  
AS SHOWN  
SHEET NO.  
1221

UTILITY INFORMATION				
#	FACILITY	SIZE	OWNER	DISPOSITION
1	OH POWER	500kV	SCE TRANS	RELOCATE
2	OH POWER	69kV	SCE TRANS	RELOCATE



Projects\T01206.00\_CHSRBP\00\_CADD\Sheet Files\UT\A1\1\BP\_UT-C4100

1/23/2021 3:08:59 AM

jcs\_user\_17609

REV	DATE	BY	CHK	APP	DESCRIPTION

DESIGNED BY  
**D. HOLMAN**

DRAWN BY  
**J. LOPEZ**

CHECKED BY  
**G. CAMPBELL**

IN CHARGE  
**G. CAMPBELL**

DATE  
**01/29/2021**

**RECORD SET**

**PEPD**

**SUBMITTAL**

**NOT FOR**

**CONSTRUCTION**



**CALIFORNIA HIGH-SPEED RAIL PROJECT**

**BAKERSFIELD TO PALMDALE**

COMPOSITE UTILITY PLANS

ALTERNATIVE 1,2,5

STA 19760+00 TO 19785+00

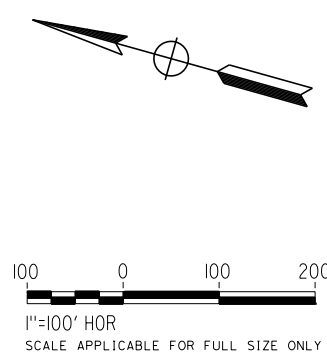
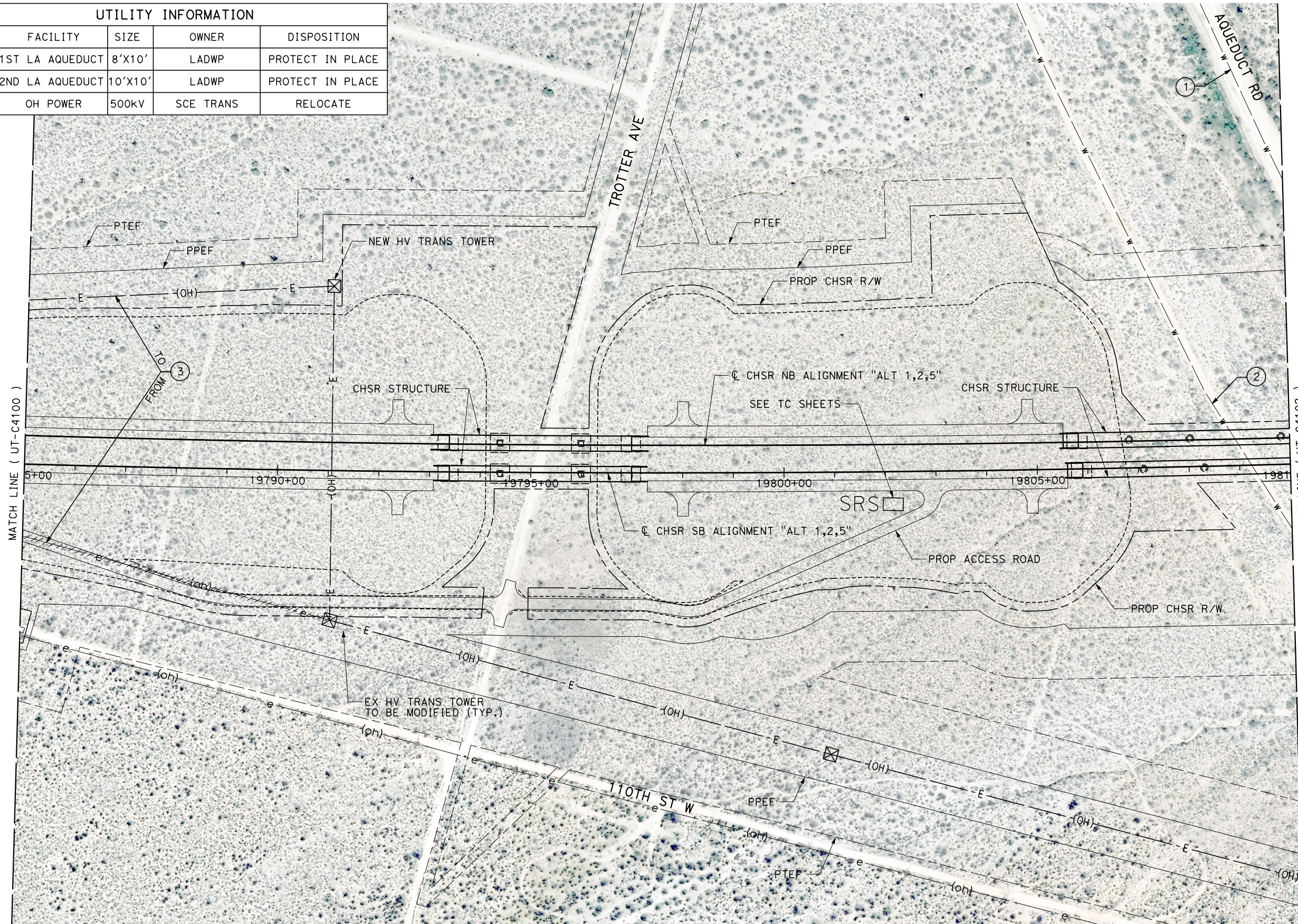
CONTRACT NO.  
HSR13-44

DRAWING NO.  
UT-C4100

SCALE  
AS SHOWN

SHEET NO.  
1222

UTILITY INFORMATION				
#	FACILITY	SIZE	OWNER	DISPOSITION
1	1ST LA AQUEDUCT	8'X10'	LADWP	PROTECT IN PLACE
2	2ND LA AQUEDUCT	10'X10'	LADWP	PROTECT IN PLACE
3	OH POWER	500kV	SCE TRANS	RELOCATE



Projects\T01206.00\_CHSRBP\00\_CADD\Sheet Files\UT\A\1\BP-UT-C4101

1/23/2021 3:09:31 AM

jcs\_user\_17609

REV	DATE	BY	CHK	APP	DESCRIPTION

DESIGNED BY  
**D. HOLMAN**  
DRAWN BY  
**J. LOPEZ**  
CHECKED BY  
**G. CAMPBELL**  
IN CHARGE  
**G. CAMPBELL**  
DATE  
**01/29/2021**

**RECORD SET  
PEPD  
SUBMITTAL**

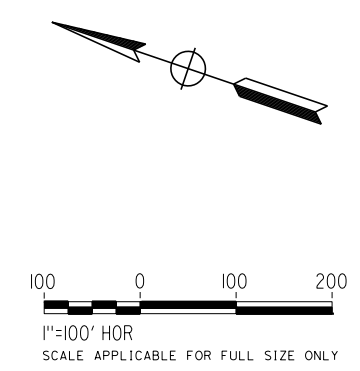
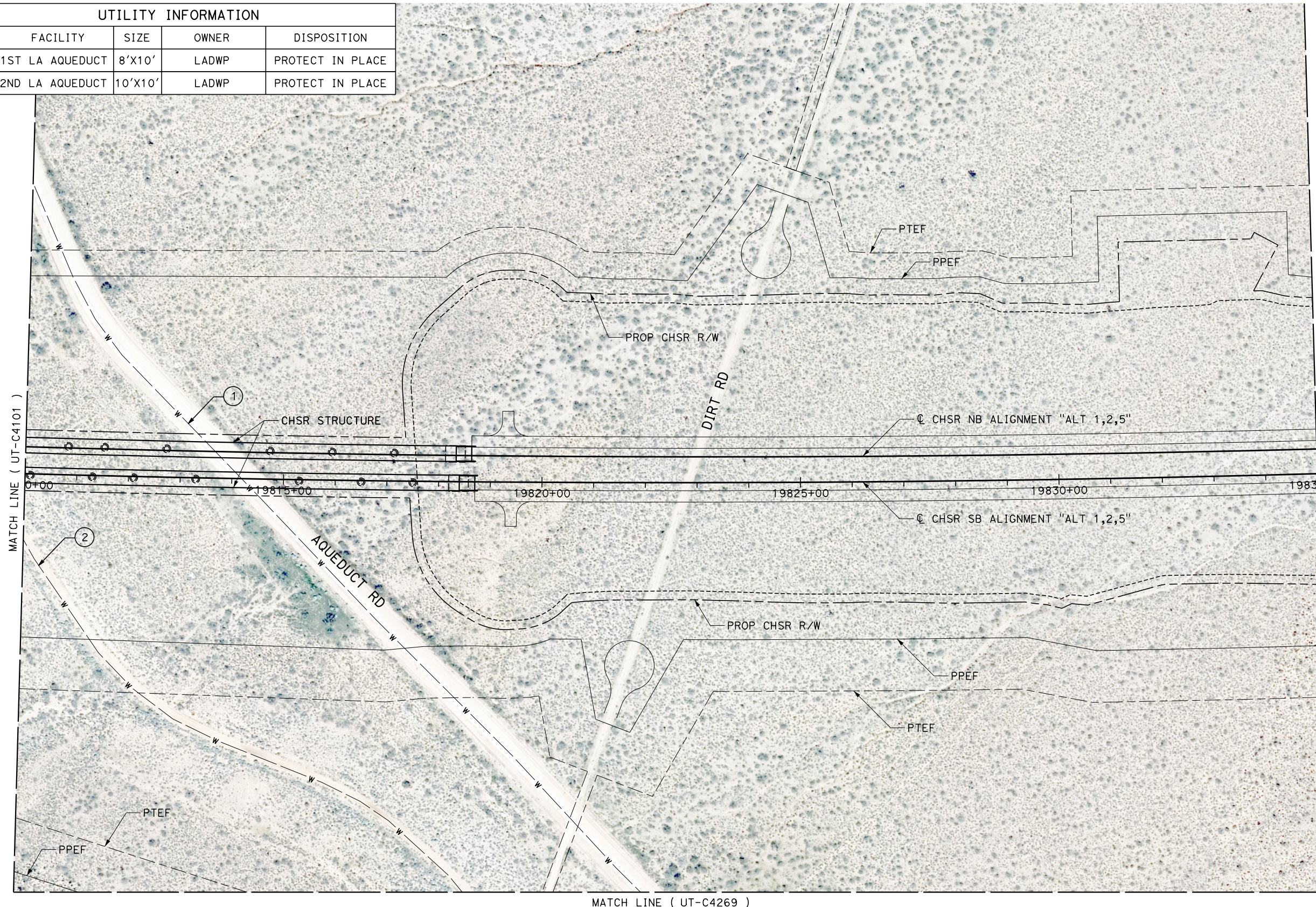
**NOT FOR  
CONSTRUCTION**



**CALIFORNIA HIGH-SPEED RAIL PROJECT  
BAKERSFIELD TO PALMDALE**  
COMPOSITE UTILITY PLANS  
ALTERNATIVE 1,2,5  
STA 19785+00 TO 19810+00

CONTRACT NO.  
**HSR13-44**  
DRAWING NO.  
**UT-C4101**  
SCALE  
**AS SHOWN**  
SHEET NO.  
**1223**

UTILITY INFORMATION				
#	FACILITY	SIZE	OWNER	DISPOSITION
1	1ST LA AQUEDUCT	8'X10'	LADWP	PROTECT IN PLACE
2	2ND LA AQUEDUCT	10'X10'	LADWP	PROTECT IN PLACE



1/23/2021 3:09:52 AM  
 Projects\701206.00\_CHSRBP\00\_CADD\Sheet Files\UT\AI\1\BP-UT-C4102  
 jcs\_user\_17609

REV	DATE	BY	CHK	APP	DESCRIPTION

DESIGNED BY  
**D. HOLMAN**  
 DRAWN BY  
**J. LOPEZ**  
 CHECKED BY  
**G. CAMPBELL**  
 IN CHARGE  
**G. CAMPBELL**  
 DATE  
**01/29/2021**

**RECORD SET**  
**PEPD**  
**SUBMITTAL**  
  
**NOT FOR**  
**CONSTRUCTION**



**CALIFORNIA HIGH-SPEED RAIL PROJECT**  
**BAKERSFIELD TO PALMDALE**  
 COMPOSITE UTILITY PLANS  
 ALTERNATIVE 1,2,5  
 STA 19810+00 TO 19835+00

CONTRACT NO.  
**HSR13-44**  
 DRAWING NO.  
**UT-C4102**  
 SCALE  
**AS SHOWN**  
 SHEET NO. **1224**

Projects\701206.00\_CHSRBP\00\_CADD\Sheet\_Files\UT\AI\1\BP-UT-C4103

1/23/2021 3:10:20 AM

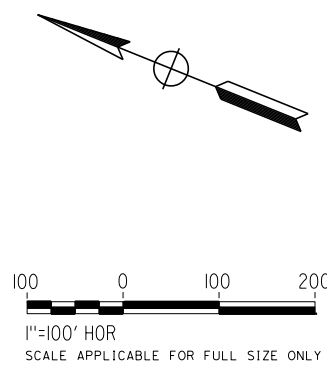
jcs\_user\_17609

MATCH LINE ( UT-C4270 )



MATCH LINE ( UT-C4102 )

MATCH LINE ( UT-C4104 )



REV	DATE	BY	CHK	APP	DESCRIPTION

DESIGNED BY  
**D. HOLMAN**  
DRAWN BY  
**J. LOPEZ**  
CHECKED BY  
**G. CAMPBELL**  
IN CHARGE  
**G. CAMPBELL**  
DATE  
**01/29/2021**

**RECORD SET**  
**PEPD**  
**SUBMITTAL**

**NOT FOR**  
**CONSTRUCTION**



**CALIFORNIA HIGH-SPEED RAIL PROJECT**  
**BAKERSFIELD TO PALMDALE**  
COMPOSITE UTILITY PLANS  
ALTERNATIVE 1,2,5  
STA 19835+00 TO 19860+00

CONTRACT NO.  
HSR13-44  
DRAWING NO.  
UT-C4103  
SCALE  
AS SHOWN  
SHEET NO.  
1225

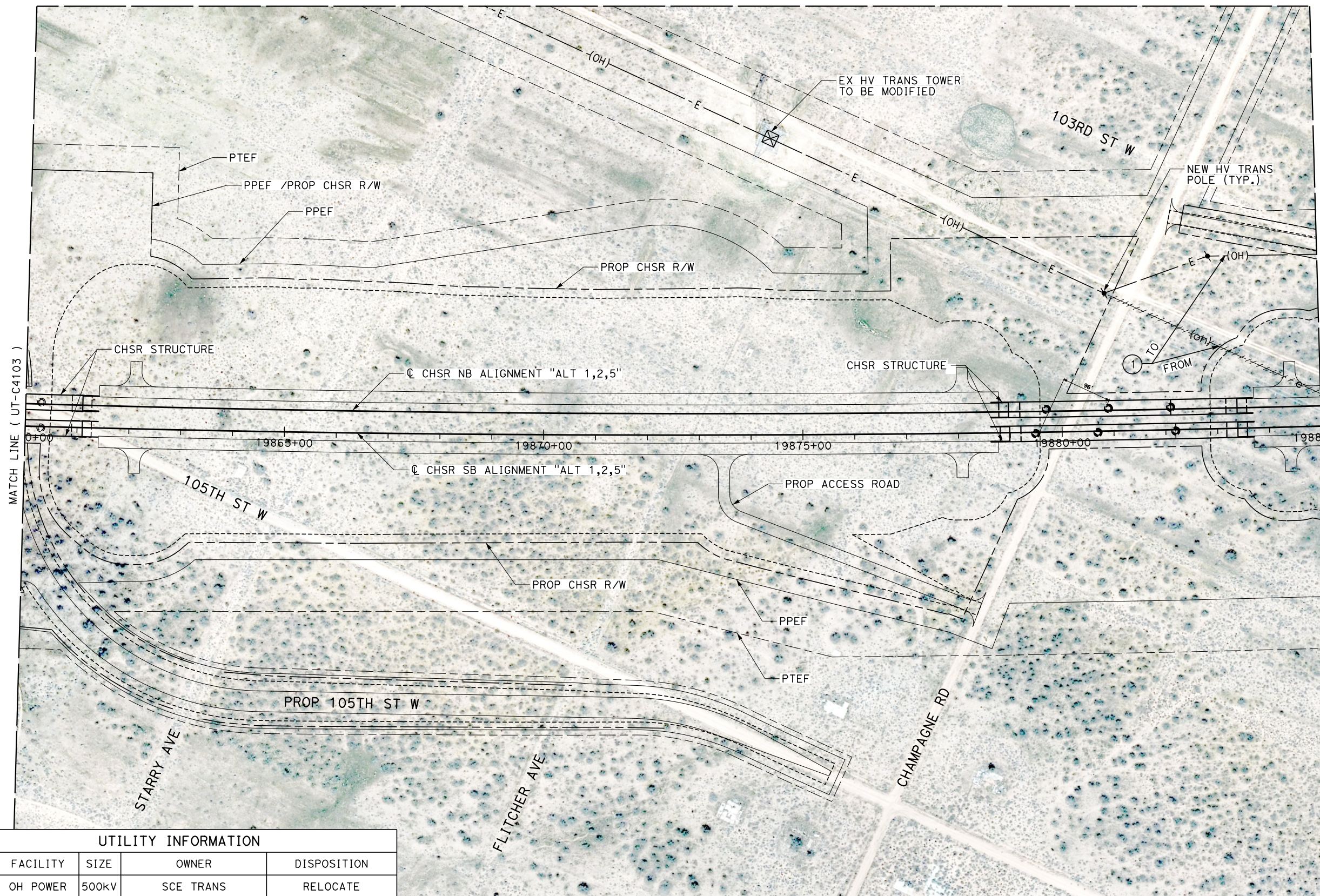


Projects\T01206.00\_CHSRBP\00\_CADD\Sheet\_Files\UT\AI\1\_NBP-UT-C4104

1/23/2021 3:10:18 AM

ics\_user\_17609

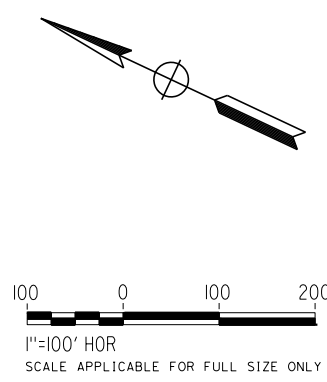
MATCH LINE ( UT-C4271 )



MATCH LINE ( UT-C4103 )

MATCH LINE ( UT-C4105 )

UTILITY INFORMATION				
#	FACILITY	SIZE	OWNER	DISPOSITION
1	OH POWER	500kV	SCE TRANS	RELOCATE



REV	DATE	BY	CHK	APP	DESCRIPTION

DESIGNED BY  
**D. HOLMAN**  
DRAWN BY  
**J. LOPEZ**  
CHECKED BY  
**G. CAMPBELL**  
IN CHARGE  
**G. CAMPBELL**  
DATE  
**01/29/2021**

**RECORD SET  
PEPD  
SUBMITTAL**

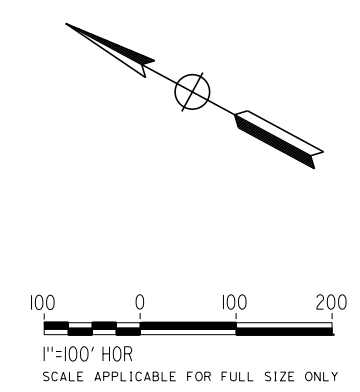
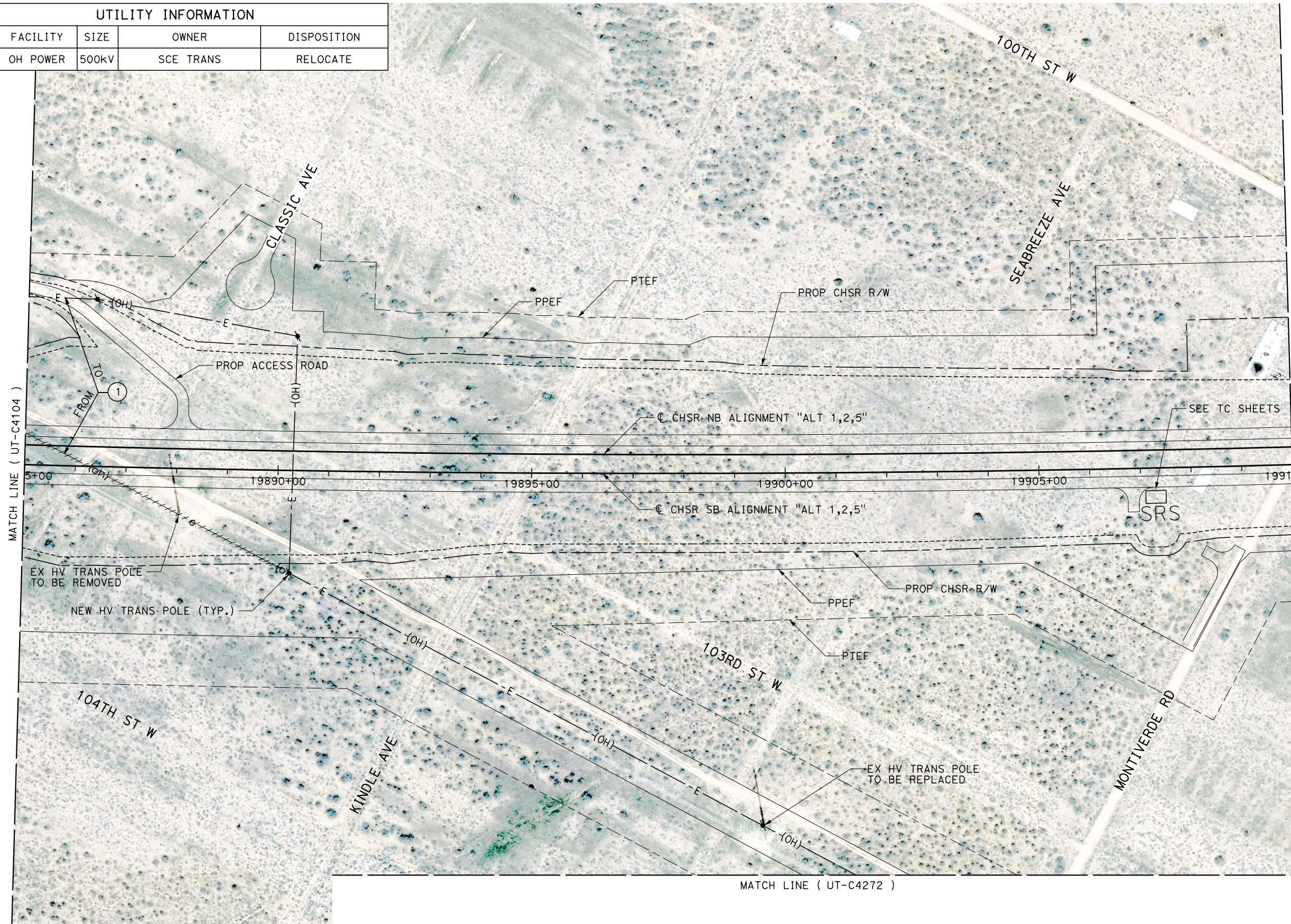
**NOT FOR  
CONSTRUCTION**



**CALIFORNIA HIGH-SPEED RAIL PROJECT  
BAKERSFIELD TO PALMDALE**  
COMPOSITE UTILITY PLANS  
ALTERNATIVE 1,2,5  
STA 19860+00 TO 19885+00

CONTRACT NO.  
HSR13-44  
DRAWING NO.  
UT-C4104  
SCALE  
AS SHOWN  
SHEET NO.  
1226

UTILITY INFORMATION				
#	FACILITY	SIZE	OWNER	DISPOSITION
1	OH POWER	500KV	SCE TRANS	RELOCATE



Projects\T01206\00\_CHSRBP\00\_CADD\Sheet Files\UT\A1\1\_NBP-UT-C4105

1/23/2021 3:10:26 AM

jcs\_user\_17609

REV	DATE	BY	CHK	APP	DESCRIPTION

DESIGNED BY  
**D. HOLMAN**

DRAWN BY  
**J. LOPEZ**

CHECKED BY  
**G. CAMPBELL**

IN CHARGE  
**G. CAMPBELL**

DATE  
**01/29/2021**

**RECORD SET**  
**PEPD**  
**SUBMITTAL**

**NOT FOR**  
**CONSTRUCTION**



**CALIFORNIA HIGH-SPEED RAIL PROJECT**  
**BAKERSFIELD TO PALMDALE**  
COMPOSITE UTILITY PLANS  
ALTERNATIVE 1,2,5  
STA 19885+00 TO 19910+00

CONTRACT NO.  
HSR13-44

DRAWING NO.  
UT-C4105

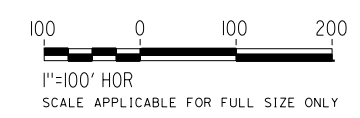
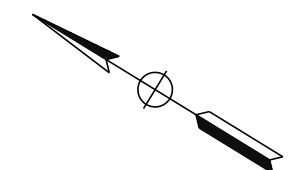
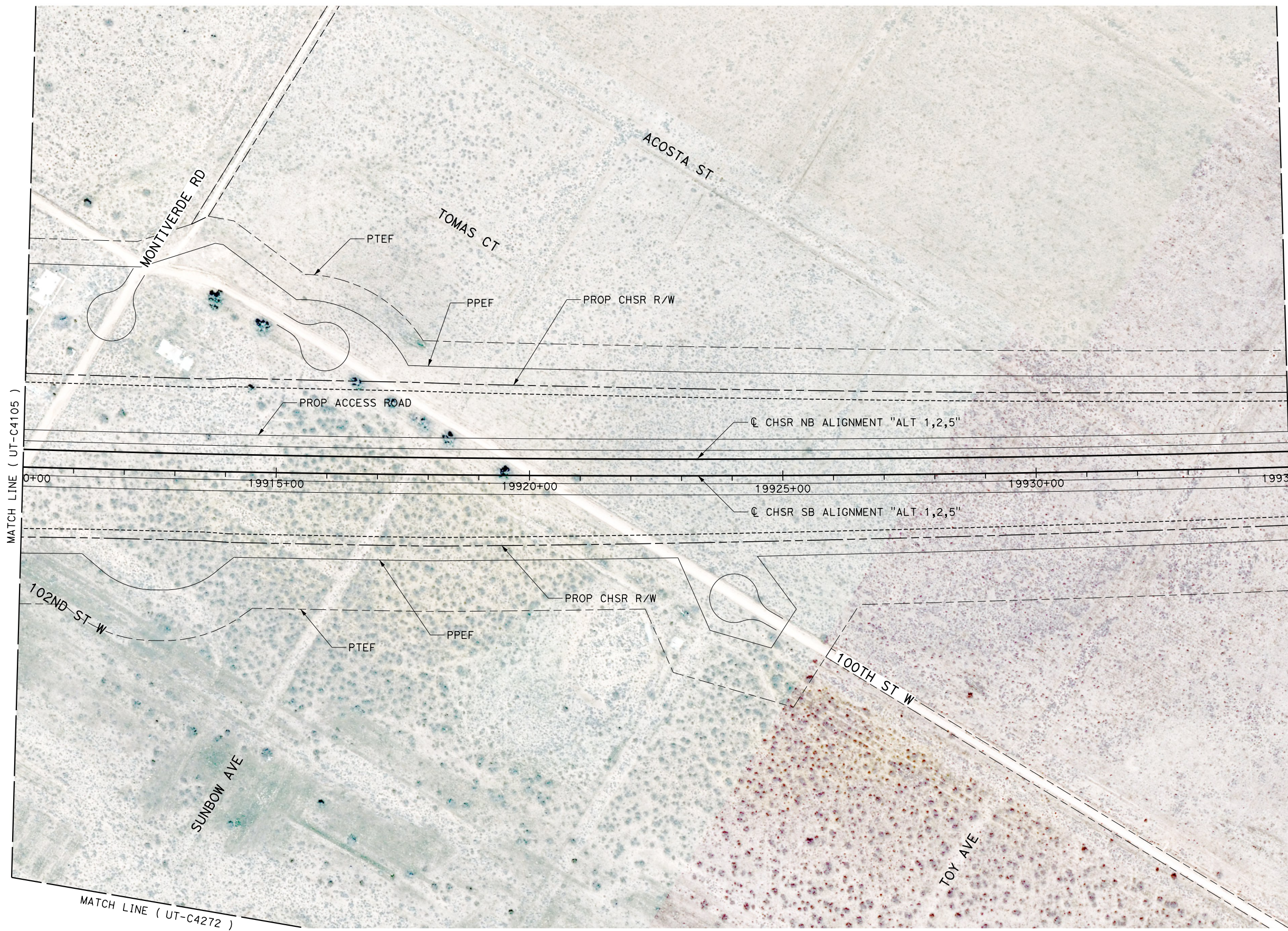
SCALE  
AS SHOWN

SHEET NO.  
1227

Projects\701206\00\_CHSRBP\00\_CADD\Sheet Files\UT\AI\1\BP-UT-C4106

1/23/2021 3:09:36 AM

ics\_user\_17609



REV	DATE	BY	CHK	APP	DESCRIPTION

DESIGNED BY  
**D. HOLMAN**  
DRAWN BY  
**J. LOPEZ**  
CHECKED BY  
**G. CAMPBELL**  
IN CHARGE  
**G. CAMPBELL**  
DATE  
**01/29/2021**

**RECORD SET  
PEPD  
SUBMITTAL**

**NOT FOR  
CONSTRUCTION**



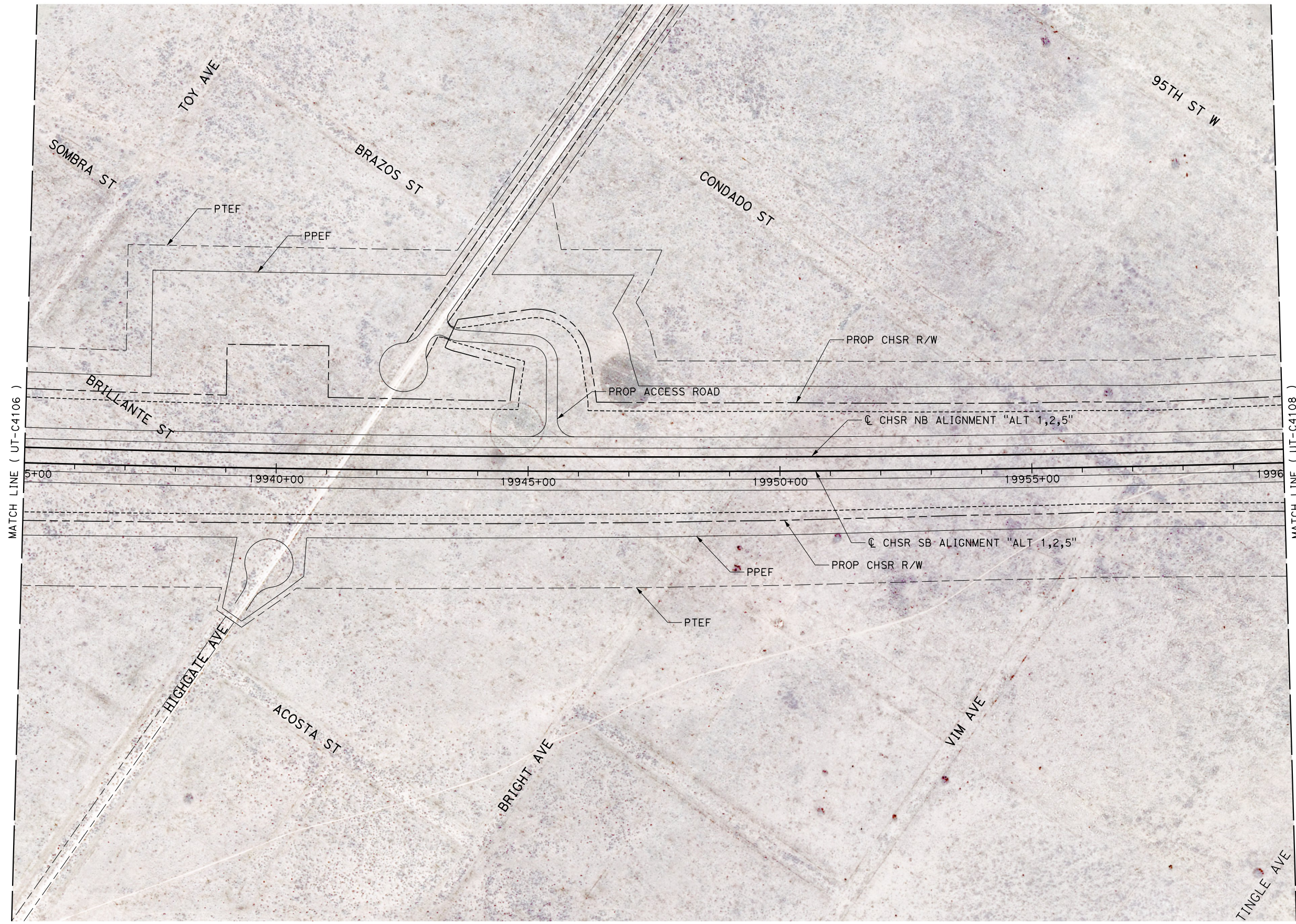
**CALIFORNIA HIGH-SPEED RAIL PROJECT  
BAKERSFIELD TO PALMDALE**  
COMPOSITE UTILITY PLANS  
ALTERNATIVE 1,2,5  
STA 19910+00 TO 19935+00

CONTRACT NO.  
**HSR13-44**  
DRAWING NO.  
**UT-C4106**  
SCALE  
**AS SHOWN**  
SHEET NO.  
**1228**

Projects\701206.00\_CHSRBP\00\_CADD\Sheet Files\UT\A1\1\BP-UT-C4107

1/23/2021 3:10:58 AM

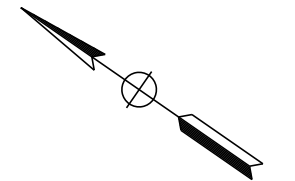
jcs\_user\_17609



MATCH LINE ( UT-C4106 )

MATCH LINE ( UT-C4108 )

5+00 19940+00 19945+00 19950+00 19955+00 19960+00



100 0 100 200  
1"=100' HOR  
SCALE APPLICABLE FOR FULL SIZE ONLY

REV	DATE	BY	CHK	APP	DESCRIPTION

DESIGNED BY  
**D. HOLMAN**  
DRAWN BY  
**J. LOPEZ**  
CHECKED BY  
**G. CAMPBELL**  
IN CHARGE  
**G. CAMPBELL**  
DATE  
**01/29/2021**

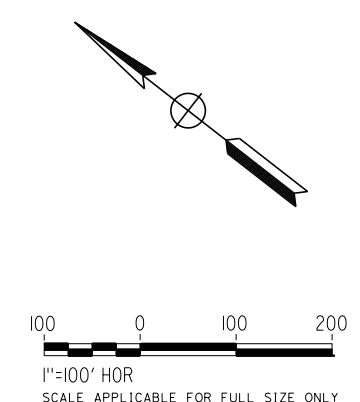
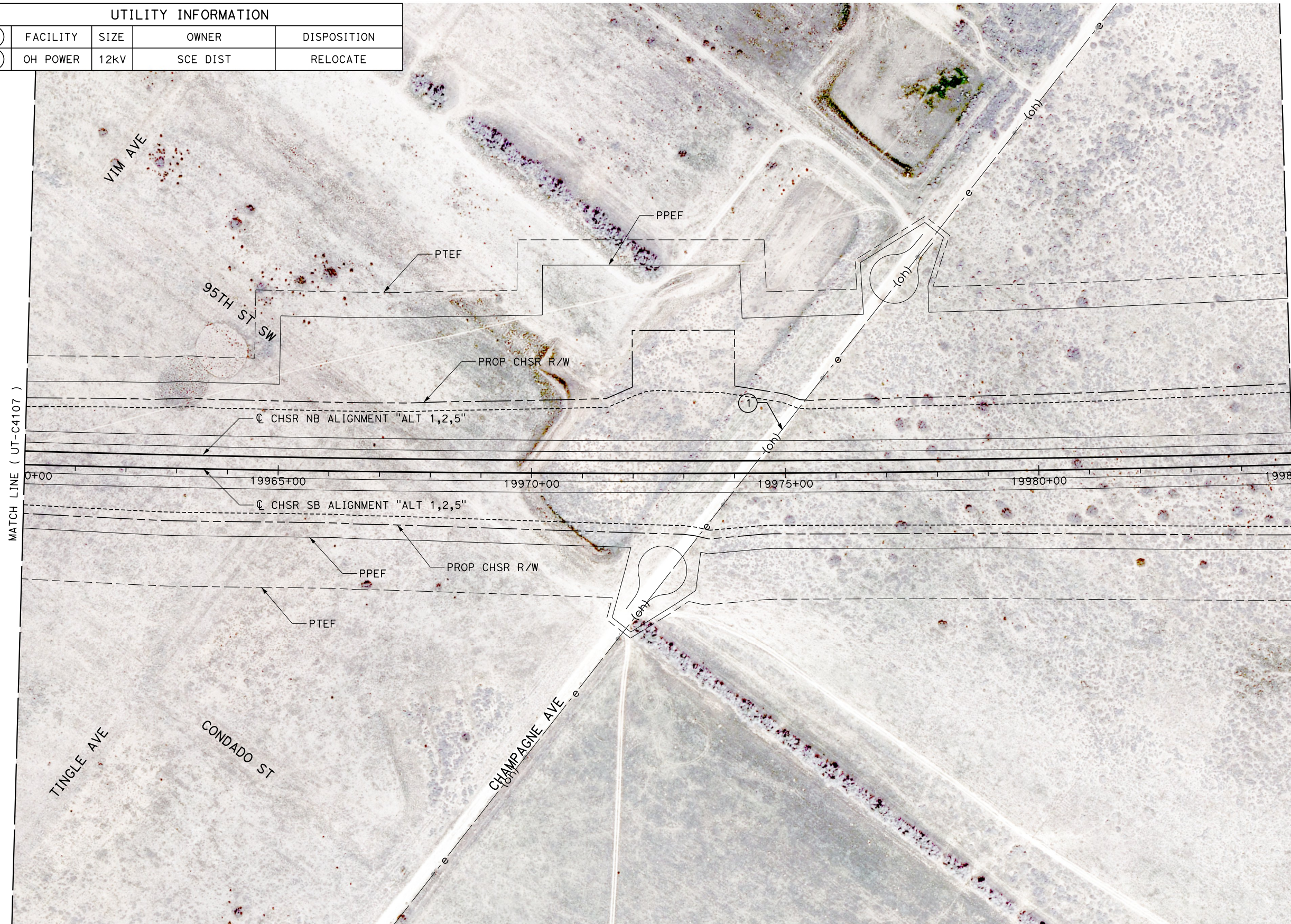
**RECORD SET**  
**PEPD**  
**SUBMITTAL**  
  
**NOT FOR**  
**CONSTRUCTION**



**CALIFORNIA HIGH-SPEED RAIL PROJECT**  
**BAKERSFIELD TO PALMDALE**  
COMPOSITE UTILITY PLANS  
ALTERNATIVE 1,2,5  
STA 19935+00 TO 19960+00

CONTRACT NO.  
**HSR13-44**  
DRAWING NO.  
**UT-C4107**  
SCALE  
**AS SHOWN**  
SHEET NO.  
**1229**

UTILITY INFORMATION				
#	FACILITY	SIZE	OWNER	DISPOSITION
1	OH POWER	12KV	SCE DIST	RELOCATE



Projects\701206.00\_CHSRBF\00\_CADD\Sheet Files\UT\AI\1\BP-UT-C4108

1/23/2021 3:10:08 AM

jcs\_user\_17609

REV	DATE	BY	CHK	APP	DESCRIPTION

DESIGNED BY  
**D. HOLMAN**

DRAWN BY  
**J. LOPEZ**

CHECKED BY  
**G. CAMPBELL**

IN CHARGE  
**G. CAMPBELL**

DATE  
**01/29/2021**

**RECORD SET**  
**PEPD**  
**SUBMITTAL**

**NOT FOR**  
**CONSTRUCTION**



**CALIFORNIA HIGH-SPEED RAIL PROJECT**  
**BAKERSFIELD TO PALMDALE**  
COMPOSITE UTILITY PLANS  
ALTERNATIVE 1,2,5  
STA 19960+00 TO 19985+00

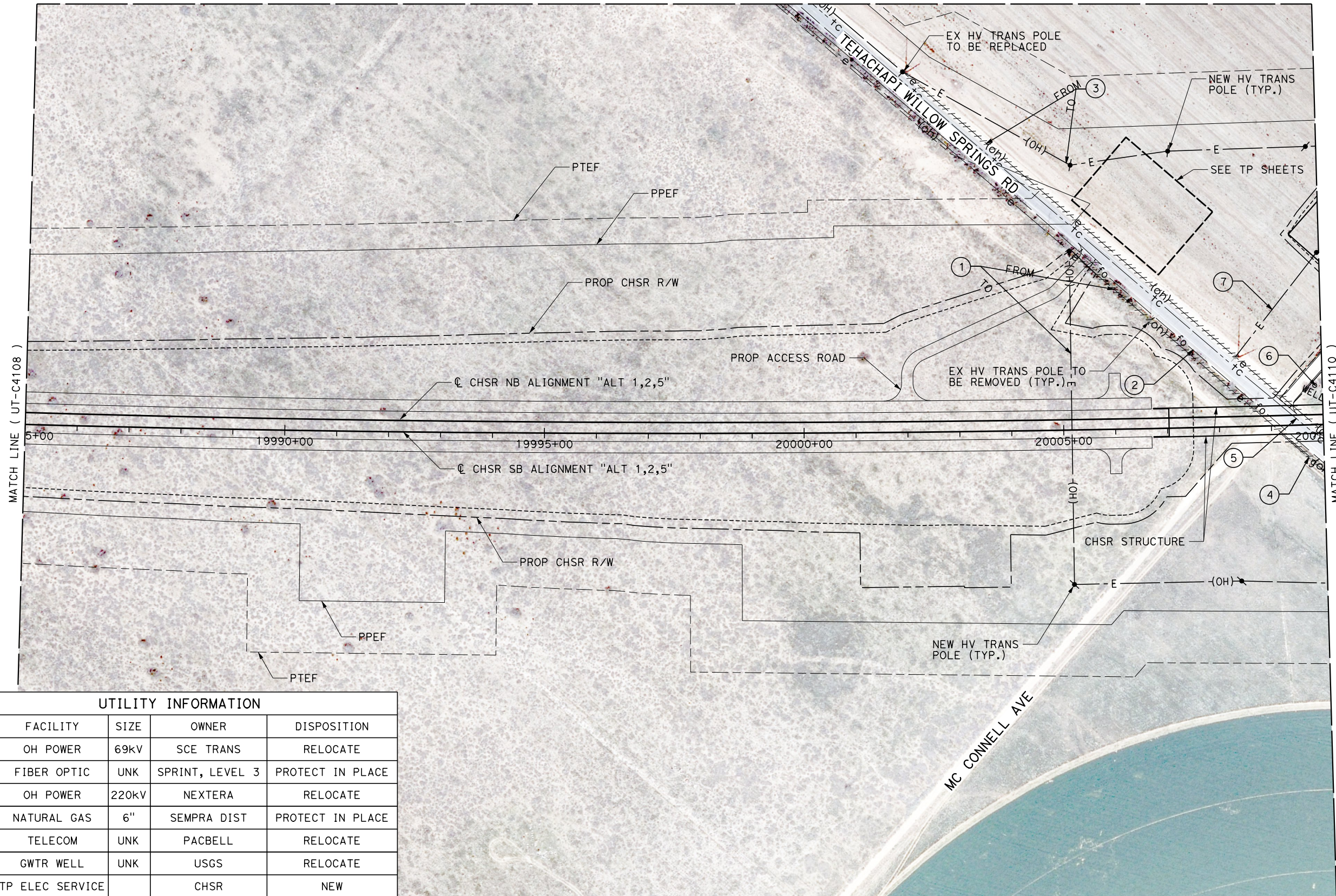
CONTRACT NO.  
HSR13-44

DRAWING NO.  
UT-C4108

SCALE  
AS SHOWN

SHEET NO.  
1230

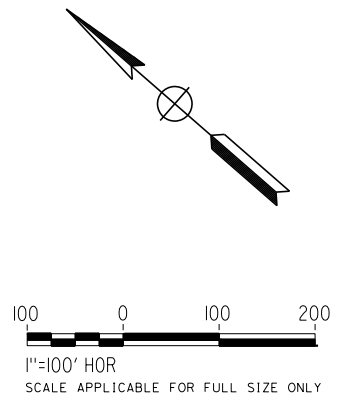
MATCH LINE ( UT-C4273 )



MATCH LINE ( UT-C4108 )

MATCH LINE ( UT-C4110 )

UTILITY INFORMATION				
#	FACILITY	SIZE	OWNER	DISPOSITION
1	OH POWER	69KV	SCE TRANS	RELOCATE
2	FIBER OPTIC	UNK	SPRINT, LEVEL 3	PROTECT IN PLACE
3	OH POWER	220KV	NEXTERA	RELOCATE
4	NATURAL GAS	6"	SEMPRA DIST	PROTECT IN PLACE
5	TELECOM	UNK	PACBELL	RELOCATE
6	GWTR WELL	UNK	USGS	RELOCATE
7	TP ELEC SERVICE		CHSR	NEW



Projects\701206.00\_CHSRBP\00\_CADD\Sheet Files\UT\AI\1\BP-UT-C4109

1/23/2021 3:10:31 AM

jcs\_user\_17609

REV	DATE	BY	CHK	APP	DESCRIPTION

DESIGNED BY  
**D. HOLMAN**

DRAWN BY  
**J. LOPEZ**

CHECKED BY  
**G. CAMPBELL**

IN CHARGE  
**G. CAMPBELL**

DATE  
**01/29/2021**

**RECORD SET**  
**PEPD**  
**SUBMITTAL**

**NOT FOR**  
**CONSTRUCTION**



**CALIFORNIA HIGH-SPEED RAIL PROJECT**  
**BAKERSFIELD TO PALMDALE**  
COMPOSITE UTILITY PLANS  
ALTERNATIVE 1,2,5  
STA 19985+00 TO 20010+00

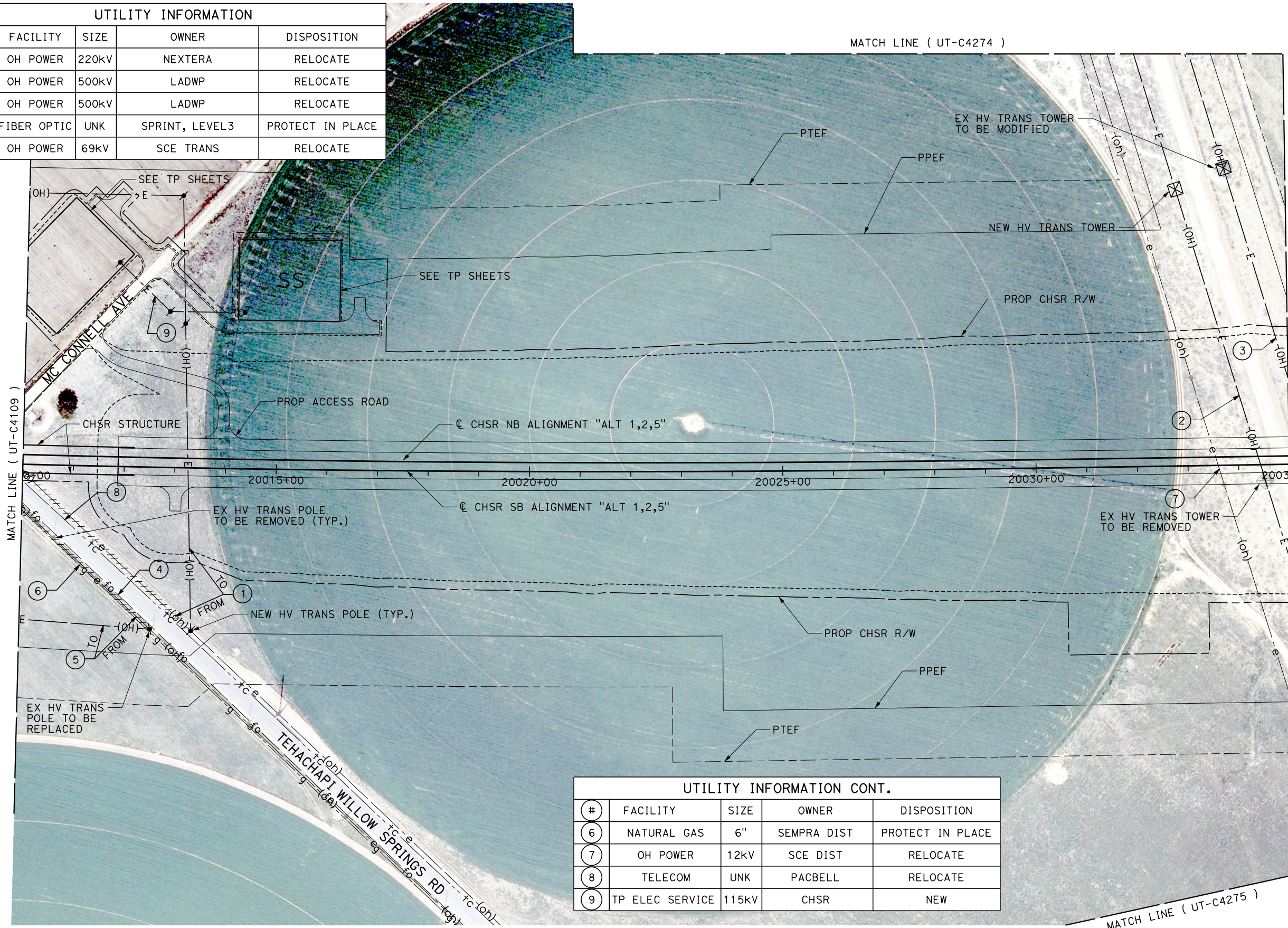
CONTRACT NO.  
HSR13-44

DRAWING NO.  
UT-C4109

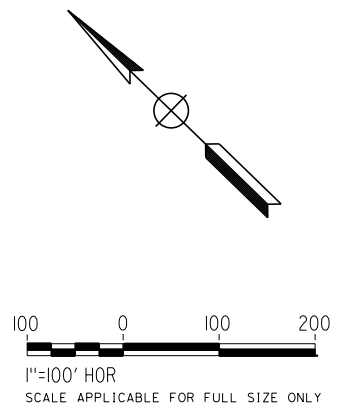
SCALE  
AS SHOWN

SHEET NO.  
1231

UTILITY INFORMATION				
#	FACILITY	SIZE	OWNER	DISPOSITION
1	OH POWER	220kV	NEXTERA	RELOCATE
2	OH POWER	500kV	LADWP	RELOCATE
3	OH POWER	500kV	LADWP	RELOCATE
4	FIBER OPTIC	UNK	SPRINT, LEVEL3	PROTECT IN PLACE
5	OH POWER	69kV	SCE TRANS	RELOCATE



UTILITY INFORMATION CONT.				
#	FACILITY	SIZE	OWNER	DISPOSITION
6	NATURAL GAS	6"	SEMPRA DIST	PROTECT IN PLACE
7	OH POWER	12kV	SCE DIST	RELOCATE
8	TELECOM	UNK	PACBELL	RELOCATE
9	TP ELEC SERVICE	115kV	CHSR	NEW



1/23/2021 3:11:05 AM Projects\701206.00\_CHSRBP\00\_CADD\Sheet Files\UT\A1\1\_NBP-UT-C4110

REV	DATE	BY	CHK	APP	DESCRIPTION

DESIGNED BY  
**D. HOLMAN**  
DRAWN BY  
**J. LOPEZ**  
CHECKED BY  
**G. CAMPBELL**  
IN CHARGE  
**G. CAMPBELL**  
DATE  
**01/29/2021**

**RECORD SET  
PEPD  
SUBMITTAL**

**NOT FOR  
CONSTRUCTION**



**CALIFORNIA HIGH-SPEED RAIL PROJECT  
BAKERSFIELD TO PALMDALE**  
COMPOSITE UTILITY PLANS  
ALTERNATIVE 1,2,5  
STA 20010+00 TO 20035+00

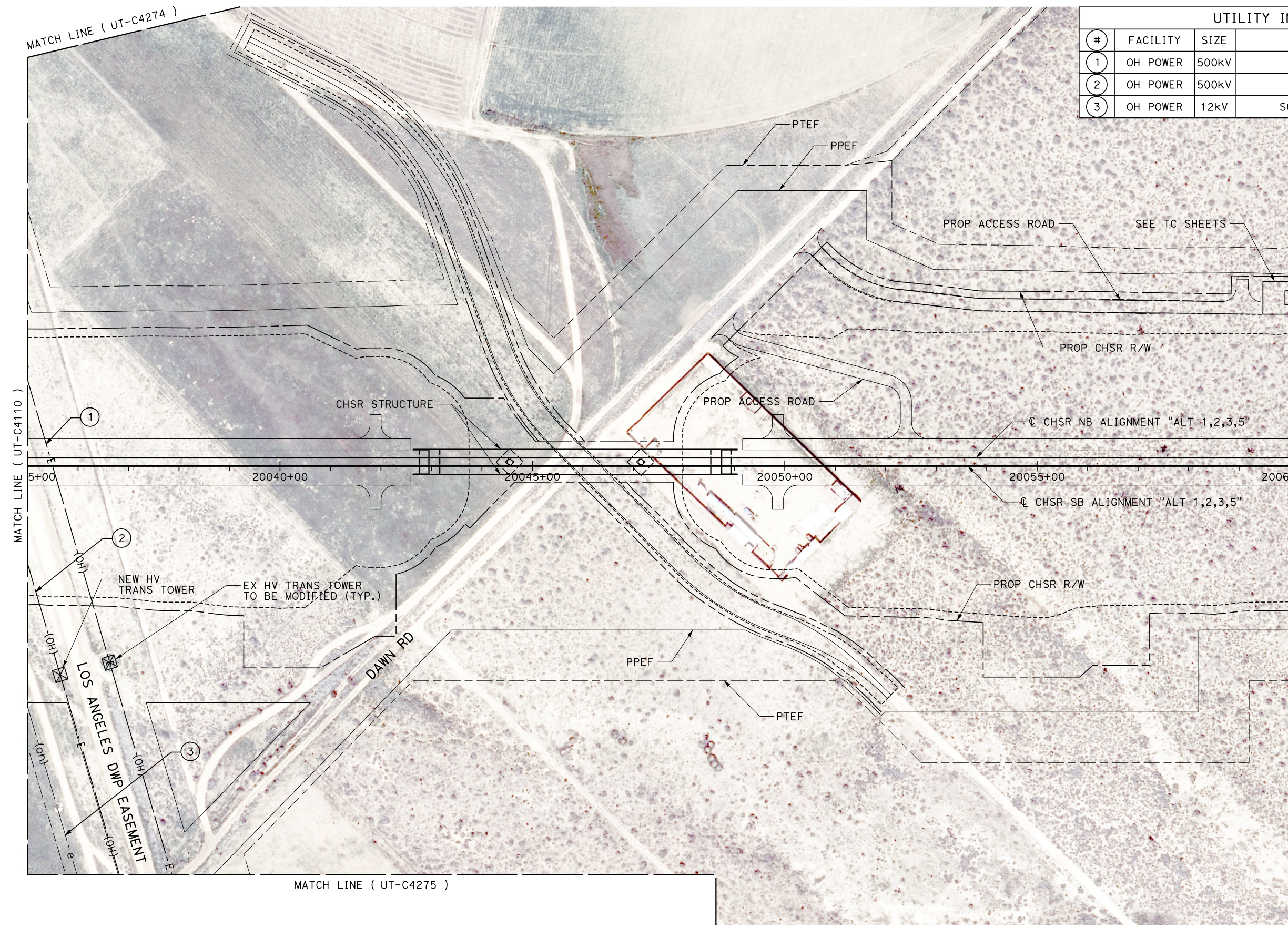
CONTRACT NO.  
HSR13-44  
DRAWING NO.  
UT-C4110  
SCALE  
AS SHOWN  
SHEET NO.  
1232

Projects\701206.00\_CHSRBP\00\_CADD\Sheet\_Files\UT\AI\1\BP-UT-C4111

1/23/2021 3:10:12 AM

ics\_user\_17609

UTILITY INFORMATION				
#	FACILITY	SIZE	OWNER	DISPOSITION
1	OH POWER	500kV	LADWP	RELOCATE
2	OH POWER	500kV	LADWP	RELOCATE
3	OH POWER	12kV	SCE DIST	RELOCATE

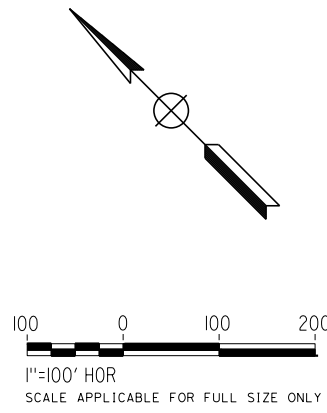


MATCH LINE ( UT-C4274 )

MATCH LINE ( UT-C4110 )

MATCH LINE ( UT-C4112 )

MATCH LINE ( UT-C4275 )



REV	DATE	BY	CHK	APP	DESCRIPTION

DESIGNED BY  
**D. HOLMAN**  
DRAWN BY  
**J. LOPEZ**  
CHECKED BY  
**G. CAMPBELL**  
IN CHARGE  
**G. CAMPBELL**  
DATE  
**01/29/2021**

**RECORD SET  
PEPD  
SUBMITTAL**

**NOT FOR  
CONSTRUCTION**

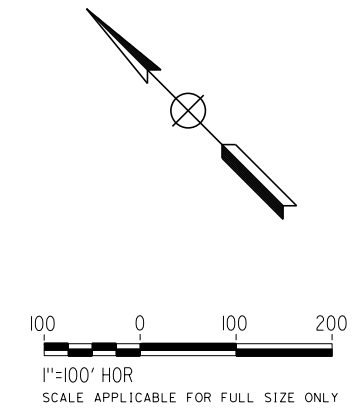
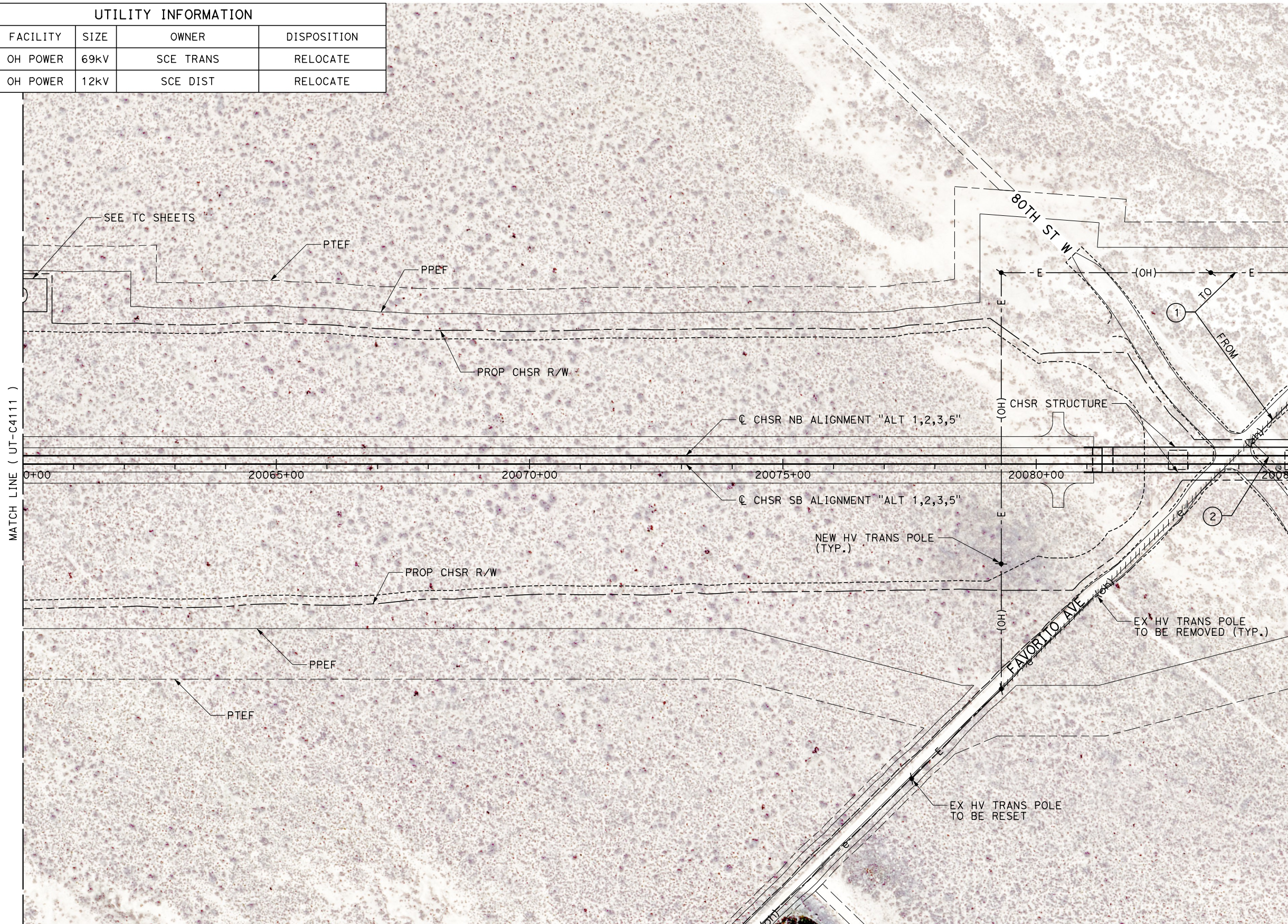


**CALIFORNIA HIGH-SPEED RAIL PROJECT  
BAKERSFIELD TO PALMDALE**  
COMPOSITE UTILITY PLANS  
ALTERNATIVE 1,2,3,5  
STA 20035+00 TO 20060+00

CONTRACT NO.  
**HSR13-44**  
DRAWING NO.  
**UT-C4111**  
SCALE  
**AS SHOWN**  
SHEET NO.  
**1233**



UTILITY INFORMATION				
#	FACILITY	SIZE	OWNER	DISPOSITION
1	OH POWER	69kV	SCE TRANS	RELOCATE
2	OH POWER	12kV	SCE DIST	RELOCATE



Projects\701206.00\_CHSRBP\00\_CADD\Sheet Files\UT\AI\1\BP-UT-C4112  
 1/23/2021 3:11:01 AM  
 jcs\_user\_17609

REV	DATE	BY	CHK	APP	DESCRIPTION

DESIGNED BY  
**D. HOLMAN**  
 DRAWN BY  
**J. LOPEZ**  
 CHECKED BY  
**G. CAMPBELL**  
 IN CHARGE  
**G. CAMPBELL**  
 DATE  
**01/29/2021**

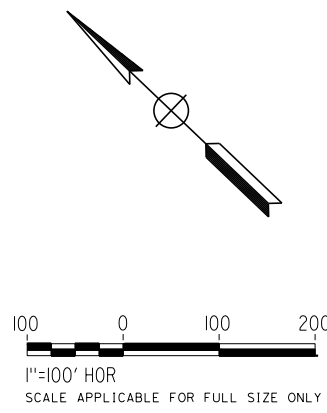
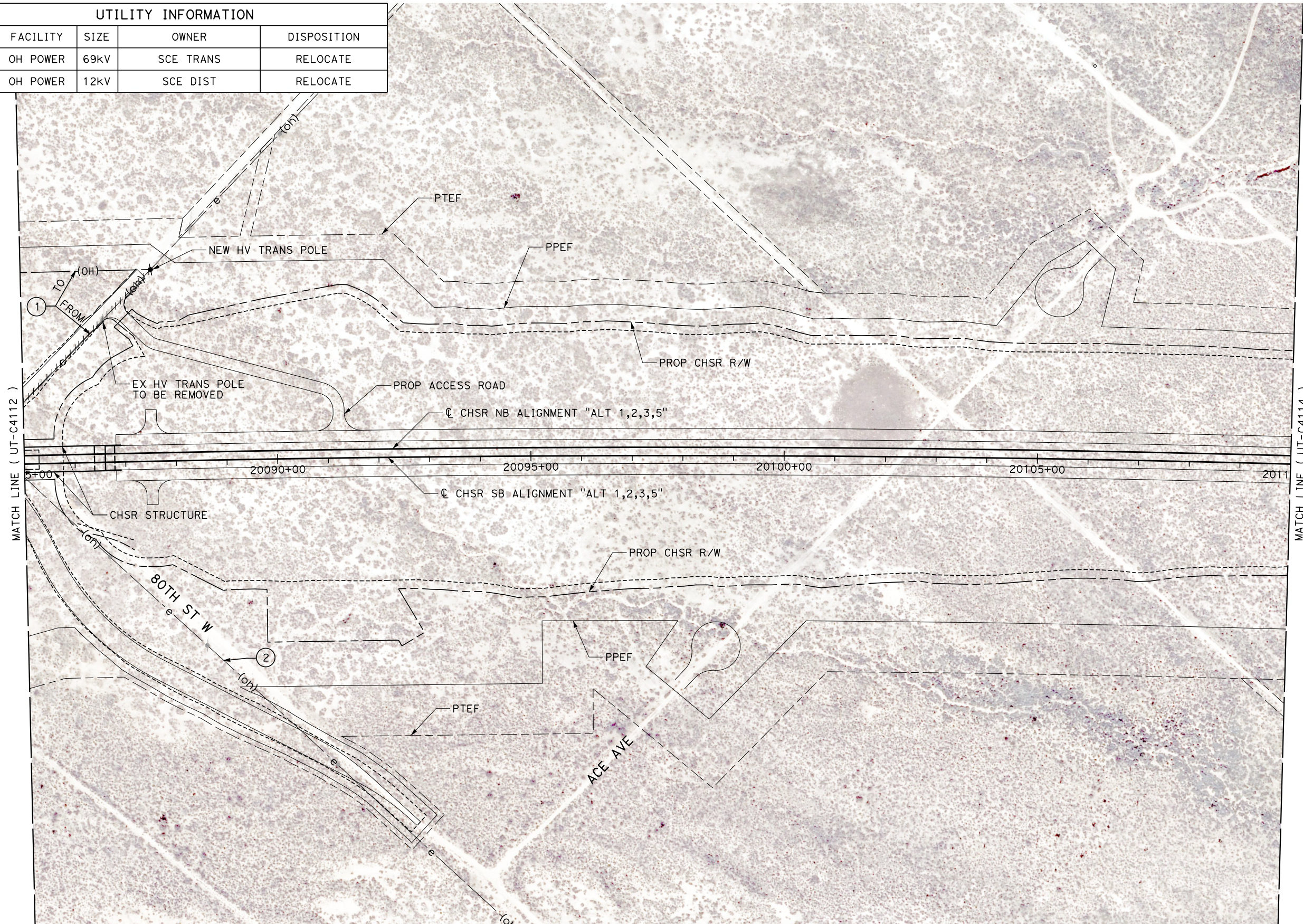
**RECORD SET**  
**PEPD**  
**SUBMITTAL**  
  
**NOT FOR**  
**CONSTRUCTION**



**CALIFORNIA HIGH-SPEED RAIL PROJECT**  
**BAKERSFIELD TO PALMDALE**  
 COMPOSITE UTILITY PLANS  
 ALTERNATIVE 1,2,3,5  
 STA 20060+00 TO 20085+00

CONTRACT NO.  
**HSR13-44**  
 DRAWING NO.  
**UT-C4112**  
 SCALE  
**AS SHOWN**  
 SHEET NO.  
**1234**

UTILITY INFORMATION				
#	FACILITY	SIZE	OWNER	DISPOSITION
1	OH POWER	69kV	SCE TRANS	RELOCATE
2	OH POWER	12kV	SCE DIST	RELOCATE



Projects\T01206\00\_CHSRBP\00\_CADD\Sheet\_Files\UT\A1\1\_NBP\_UT-C4113

1/23/2021 3:10:48 AM

jcs\_user\_17609

REV	DATE	BY	CHK	APP	DESCRIPTION

DESIGNED BY  
**D. HOLMAN**  
DRAWN BY  
**J. LOPEZ**  
CHECKED BY  
**G. CAMPBELL**  
IN CHARGE  
**G. CAMPBELL**  
DATE  
**01/29/2021**

**RECORD SET**  
**PEPD**  
**SUBMITTAL**

**NOT FOR**  
**CONSTRUCTION**



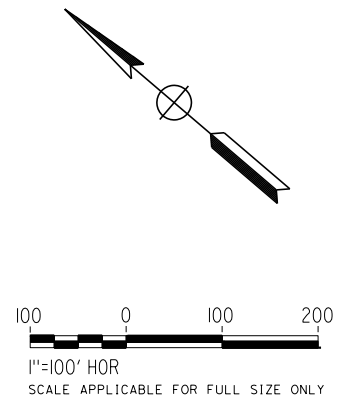
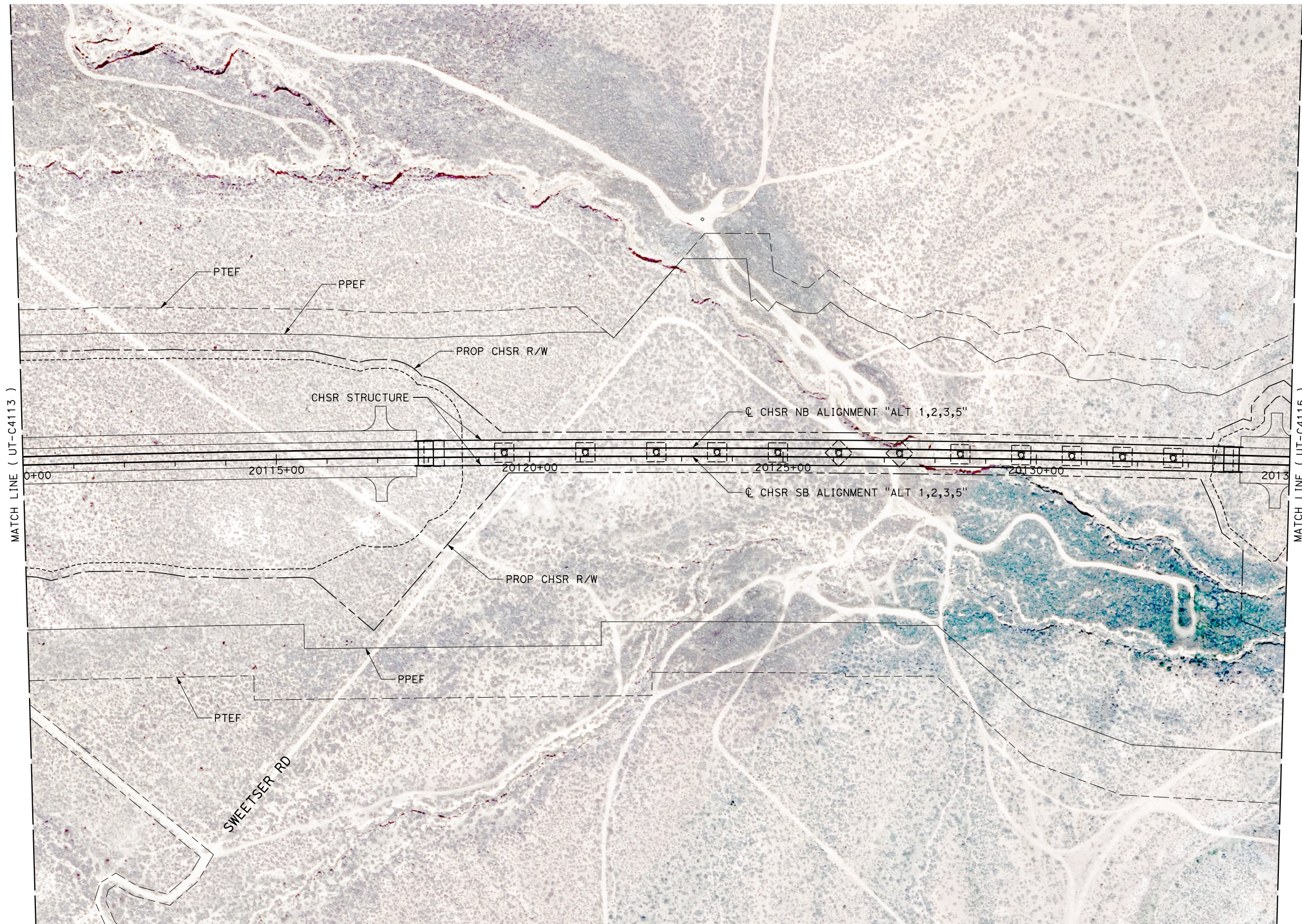
**CALIFORNIA HIGH-SPEED RAIL PROJECT**  
**BAKERSFIELD TO PALMDALE**  
COMPOSITE UTILITY PLANS  
ALTERNATIVE 1,2,3,5  
STA 20085+00 TO 20110+00

CONTRACT NO.  
HSR13-44  
DRAWING NO.  
UT-C4113  
SCALE  
AS SHOWN  
SHEET NO.  
1235

Projects\701206.00\_CHSRBP\00\_CADD\Sheet\_Files\UT\A1\1\BP-UT-C4114

1/23/2021 3:10:48 AM

ics\_user\_17609



REV	DATE	BY	CHK	APP	DESCRIPTION

DESIGNED BY  
**D. HOLMAN**  
DRAWN BY  
**J. LOPEZ**  
CHECKED BY  
**G. CAMPBELL**  
IN CHARGE  
**G. CAMPBELL**  
DATE  
**01/29/2021**

**RECORD SET**  
**PEPD**  
**SUBMITTAL**

**NOT FOR**  
**CONSTRUCTION**



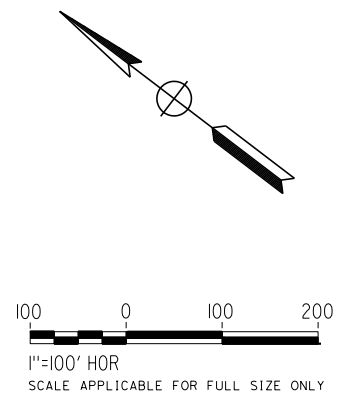
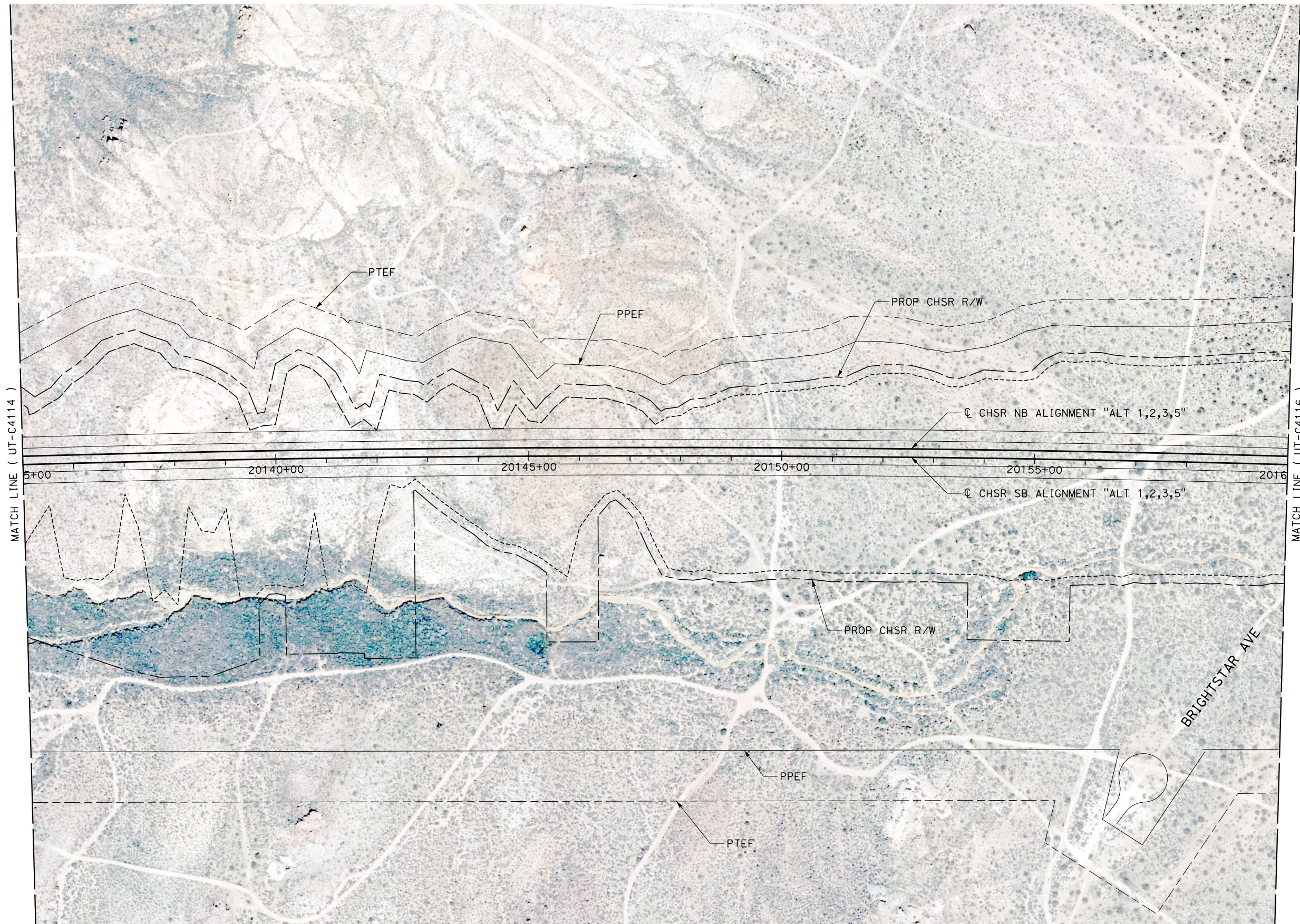
**CALIFORNIA HIGH-SPEED RAIL PROJECT**  
**BAKERSFIELD TO PALMDALE**  
COMPOSITE UTILITY PLANS  
ALTERNATIVE 1,2,3,5  
STA 20110+00 TO 20135+00

CONTRACT NO.  
**HSR13-44**  
DRAWING NO.  
**UT-C4114**  
SCALE  
**AS SHOWN**  
SHEET NO.  
**1236**

Projects\701206.00\_CHSRBP\00\_CADD\Sheet\_Files\UT\AI\1\BP-UT-C4115

1/23/2021 3:11:09 AM

jcs\_user\_17609



REV	DATE	BY	CHK	APP	DESCRIPTION

DESIGNED BY  
**D. HOLMAN**  
DRAWN BY  
**J. LOPEZ**  
CHECKED BY  
**G. CAMPBELL**  
IN CHARGE  
**G. CAMPBELL**  
DATE  
**01/29/2021**

**RECORD SET  
PEPD  
SUBMITTAL**

**NOT FOR  
CONSTRUCTION**



**CALIFORNIA HIGH-SPEED RAIL PROJECT  
BAKERSFIELD TO PALMDALE**  
COMPOSITE UTILITY PLANS  
ALTERNATIVE 1,2,3,5  
STA 20135+00 TO 20160+00

CONTRACT NO.  
HSR13-44  
DRAWING NO.  
UT-C4115  
SCALE  
AS SHOWN  
SHEET NO.  
1237

Projects\701206.00\_CHSRBP\00\_CADD\Sheet\_Files\UT\AI\1\BP-UT-C4116

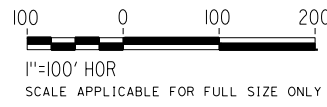
1/23/2021 3:11:33 AM

ics\_user\_17609



MATCH LINE ( UT-C4115 )

MATCH LINE ( UT-C4117 )



REV	DATE	BY	CHK	APP	DESCRIPTION

DESIGNED BY  
**D. HOLMAN**  
DRAWN BY  
**J. LOPEZ**  
CHECKED BY  
**G. CAMPBELL**  
IN CHARGE  
**G. CAMPBELL**  
DATE  
**01/29/2021**

**RECORD SET  
PEPD  
SUBMITTAL**

**NOT FOR  
CONSTRUCTION**



**CALIFORNIA HIGH-SPEED RAIL PROJECT  
BAKERSFIELD TO PALMDALE**  
COMPOSITE UTILITY PLANS  
ALTERNATIVE 1,2,3,5  
STA 20160+00 TO 20185+00

CONTRACT NO.  
**HSR13-44**  
DRAWING NO.  
**UT-C4116**  
SCALE  
**AS SHOWN**  
SHEET NO.  
**1238**