

California High-Speed Rail Authority

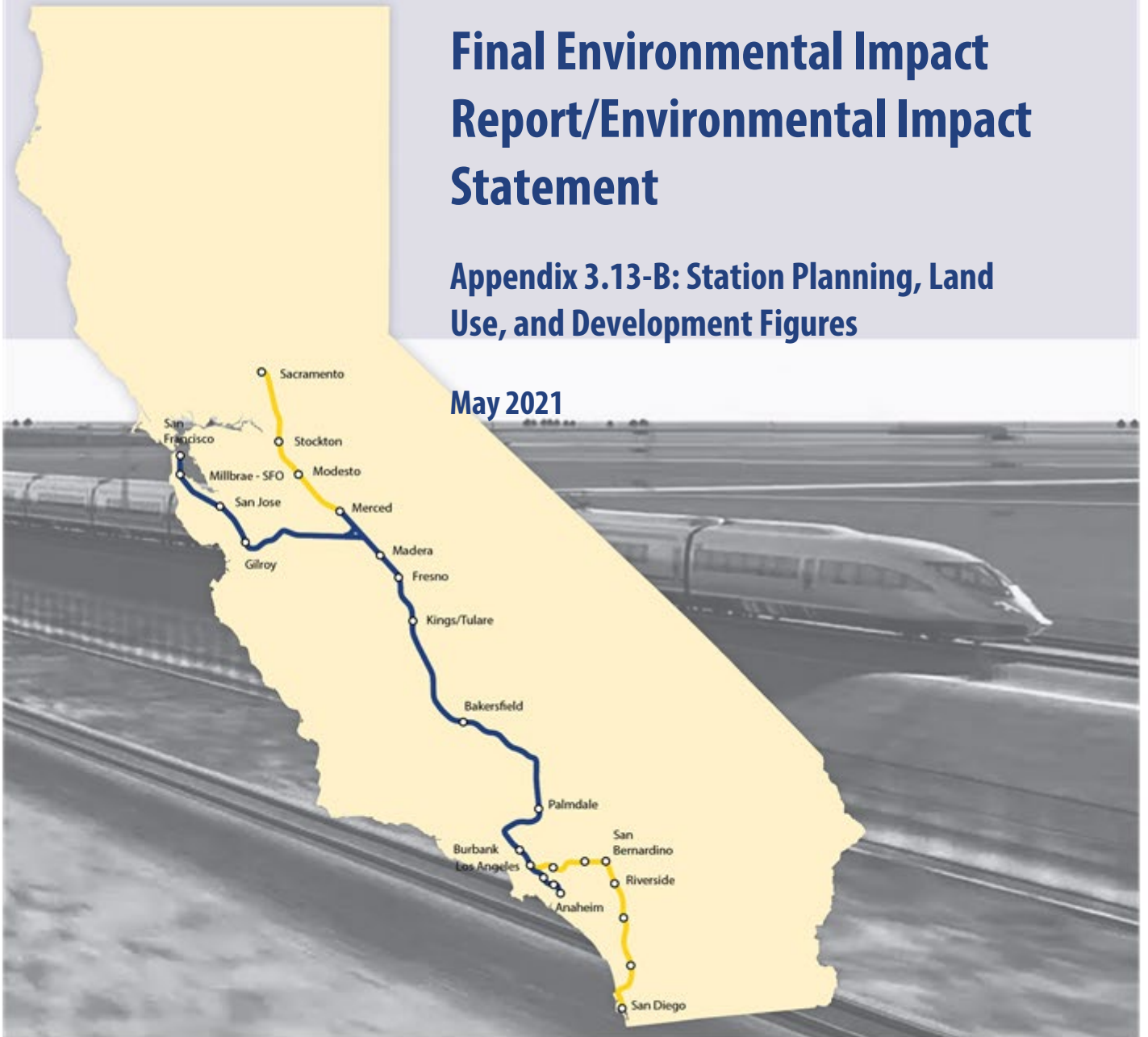
Bakersfield to Palmdale

Project Section

Final Environmental Impact Report/Environmental Impact Statement

Appendix 3.13-B: Station Planning, Land Use, and Development Figures

May 2021



The environmental review, consultation, and other actions required by applicable Federal environmental laws for this project are being or have been carried out by the State of California pursuant to 23 U.S.C. 327 and a Memorandum of Understanding dated July 23, 2019, and executed by the Federal Railroad Administration and the State of California.

This page intentionally left blank

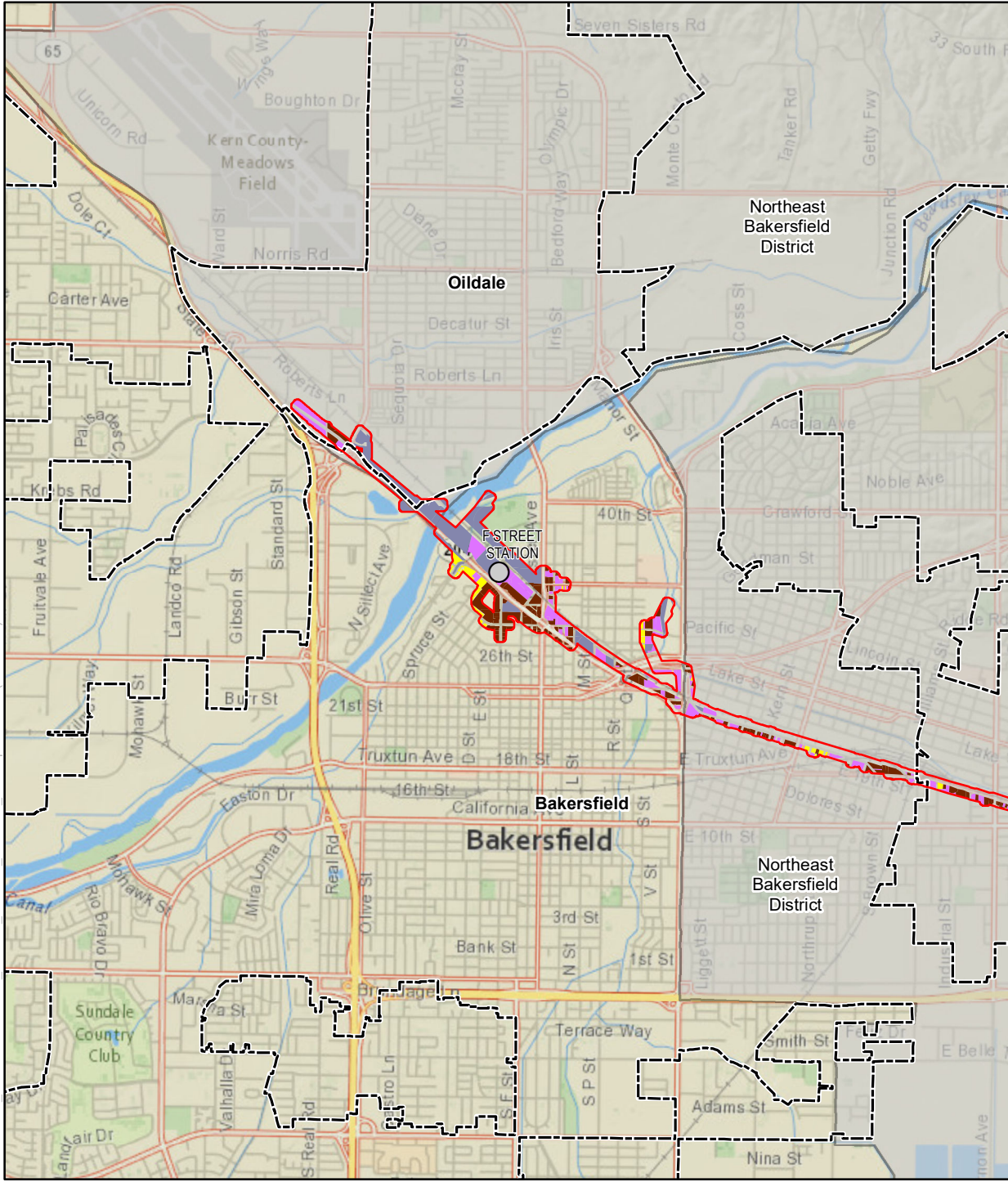
APPENDIX 3.13-B: FIGURES

This appendix contains figures in support of Section 3.13, Station Planning, Land Use, and Development. Specifically, this appendix contains the following figures:

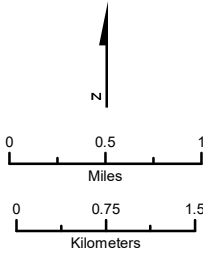
- Figure 3.13-B-1: Existing Land Uses (13 pages)
- Figure 3.13-B-2: Planned Land Uses (13 pages)
- Figure 3.13-B-3: Northeast Bakersfield (1 page)

This page intentionally left blank

FILE: Y:\HSR_BP\GIS\IMXD5.2.7_CIA\EIR_EIS\RSA_LandUse_Development.mxd (1/23/2021)



SOURCE: National Geographic (2015); CHSRA (10/2019)



- | | | |
|--|--|---|
| Station Planning, Land Use, and Development RSA | Existing Land Use - Agriculture | Public |
| Proposed Station | Commercial | Railroads/Utilities |
| Project Subsection Boundary | Industrial | Recreational |
| City/Census Designated Place Boundary | Institutional | Residential |
| Northeast Bakersfield District | Natural Resources | Vacant Land |
| County Boundary | | |

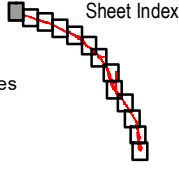
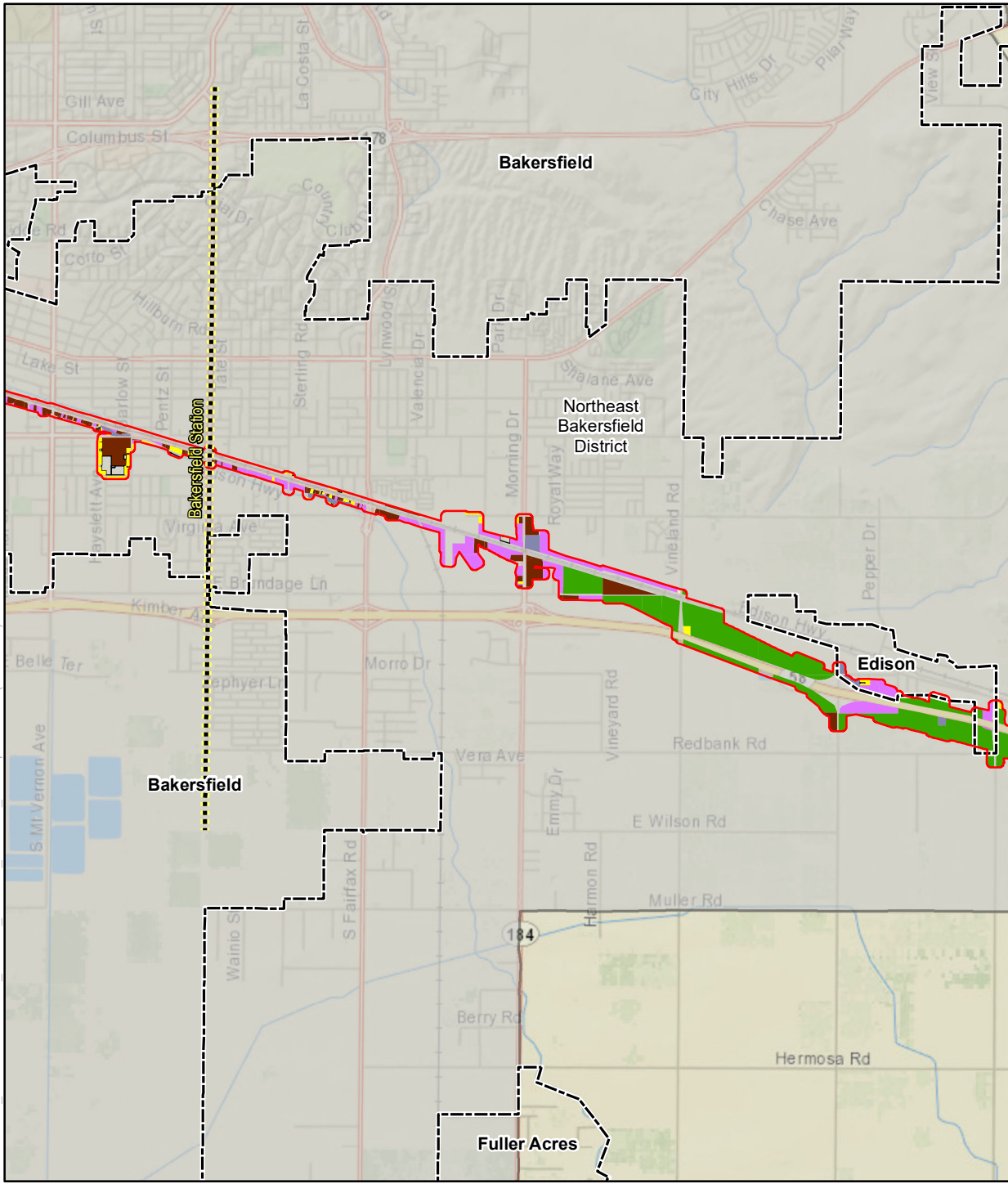
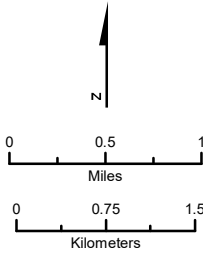


FIGURE 3.13-B-1
Page 1 of 13
Existing Land Uses

FILE: Y:\HSR_BP\GIS\IMXD\5.2.7_CIA\EIR_EIS\RSA_LandUse_Development.mxd (1/23/2021)



SOURCE: National Geographic (2015); CHSRA (10/2019)



- | | | |
|---|---------------------------------|---------------------|
| Station Planning, Land Use, and Development RSA | Existing Land Use - Agriculture | Public |
| Proposed Station | Commercial | Railroads/Utilities |
| Project Subsection Boundary | Industrial | Recreational |
| City/Census Designated Place Boundary | Institutional | Residential |
| Northeast Bakersfield District | Natural Resources | Vacant Land |
| County Boundary | | |

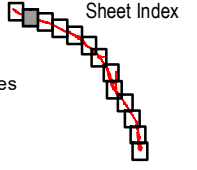
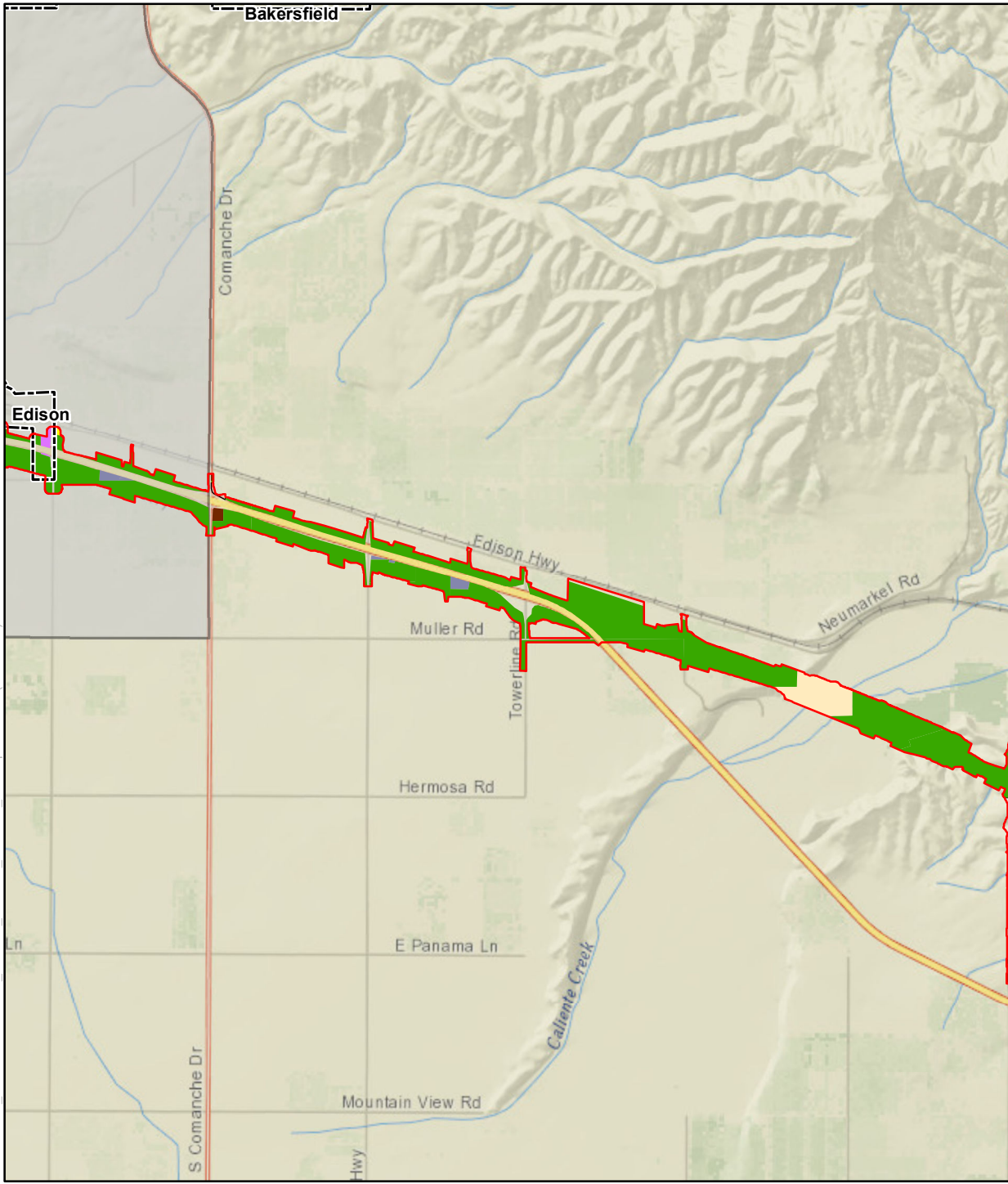
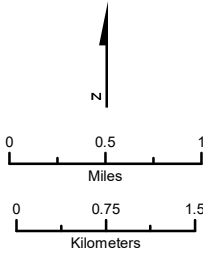


FIGURE 3.13-B-1
Page 2 of 13
Existing Land Uses

FILE: Y:\HSR_BP\GIS\IMXDs\5.2.7_CIAVEIR_EIS\RSA_LandUse_Development.mxd (1/23/2021)



SOURCE: National Geographic (2015); CHSRA (10/2019)



- | | | |
|---|---------------------------------|---------------------|
| Station Planning, Land Use, and Development RSA | Existing Land Use - Agriculture | Public |
| Proposed Station | Commercial | Railroads/Utilities |
| Project Subsection Boundary | Industrial | Recreational |
| City/Census Designated Place Boundary | Institutional | Residential |
| Northeast Bakersfield District | Natural Resources | Vacant Land |
| County Boundary | | |

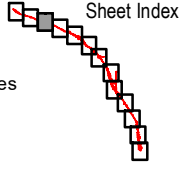
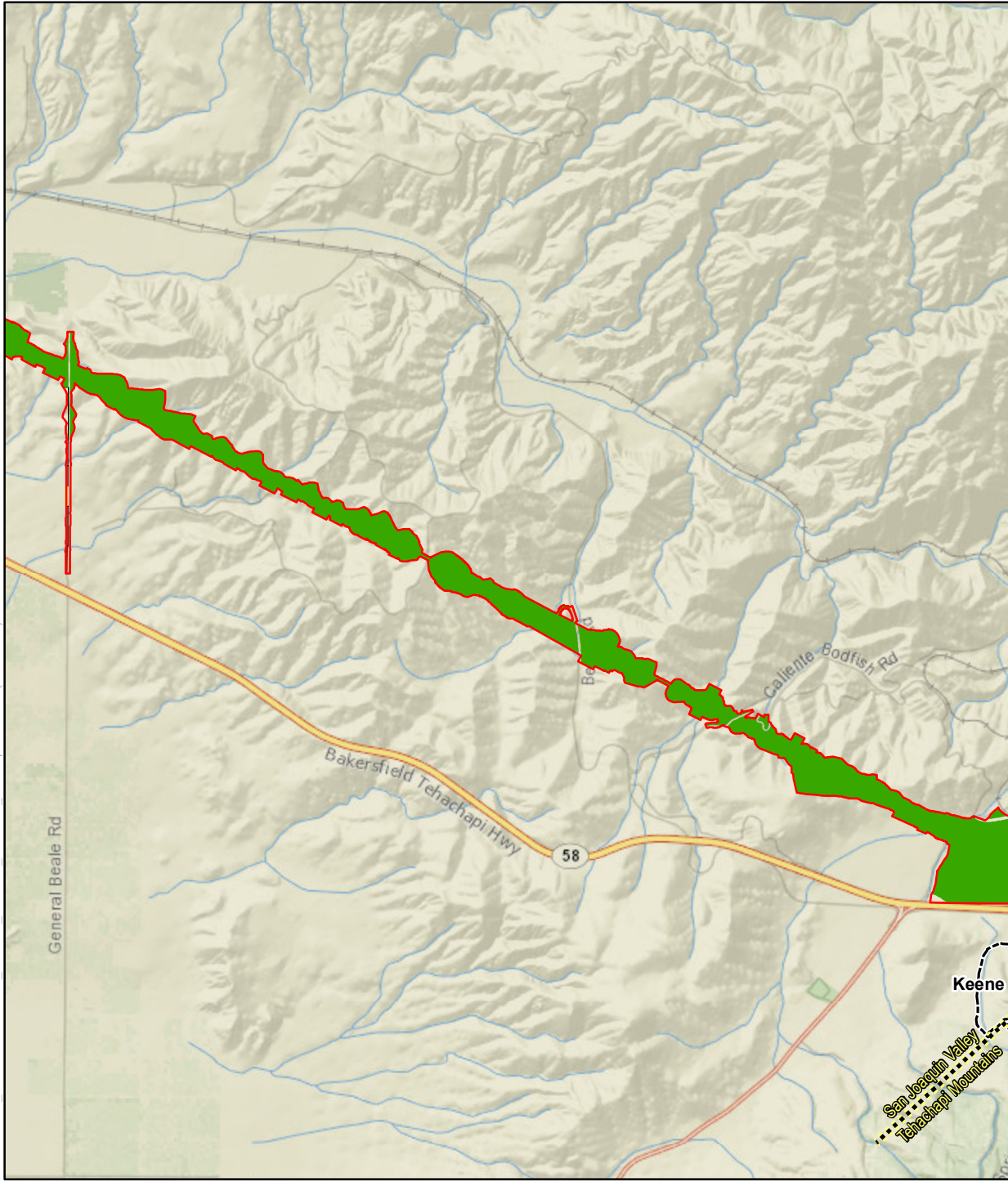
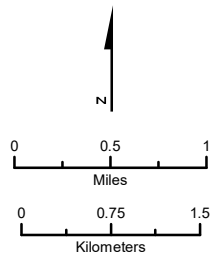


FIGURE 3.13-B-1
Page 3 of 13
Existing Land Uses

FILE: Y:\HSR_BP\GIS\MXDs\5.2.7_CIA\EIR_EIS\RSA_LandUse_Development.mxd (1/23/2021)



SOURCE: National Geographic (2015); CHSRA (10/2019)



- Station Planning, Land Use, and Development RSA
- Proposed Station
- Project Subsection Boundary
- City/Census Designated Place Boundary
- County Boundary

- Existing Land Use
- Agriculture
 - Commercial
 - Industrial
 - Institutional
 - Natural Resources

- Public
- Railroads/Utilities
- Recreational
- Residential
- Vacant Land

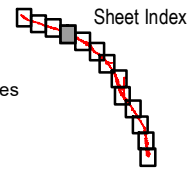
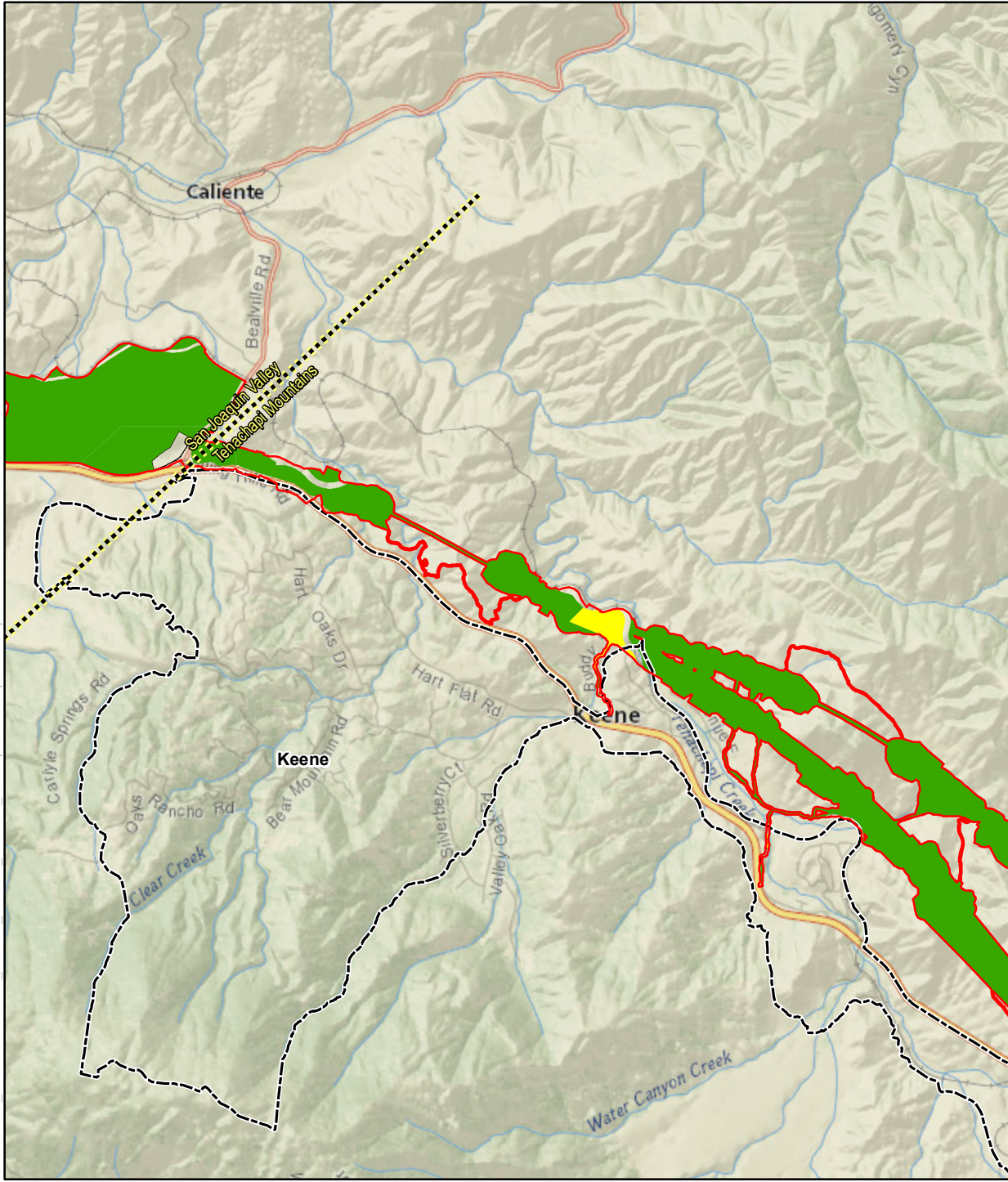


FIGURE 3.13-B-1
Page 4 of 13
Existing Land Uses

FILE: Y:\HSR_BP\GIS\IMXD\5.2.7_CIA\EIR_EIS\RSA_LandUse_Development.mxd (1/23/2021)



SOURCE: National Geographic (2015); CHSRA (10/2019)

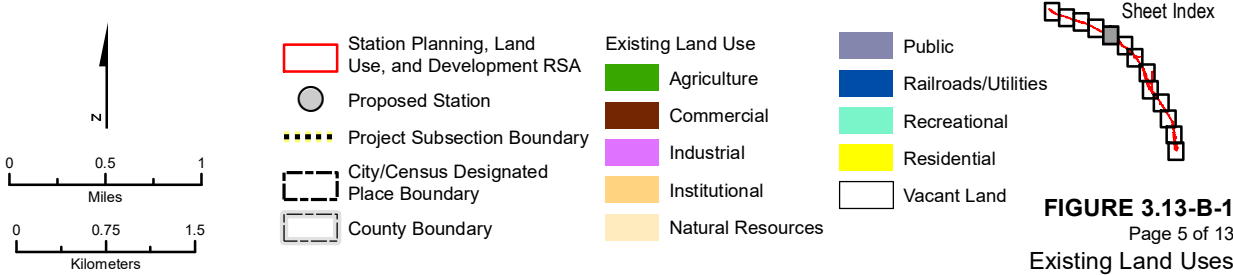
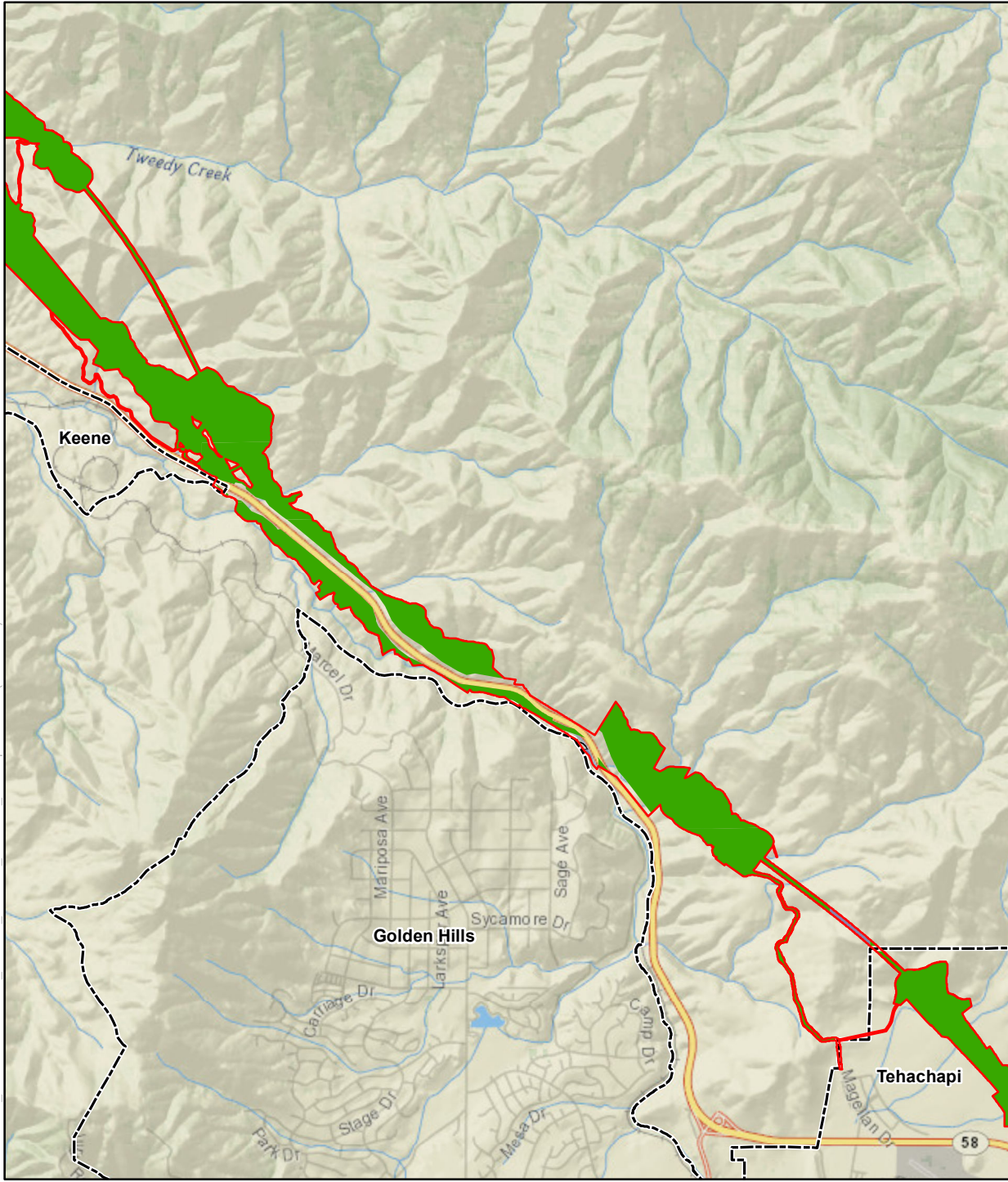
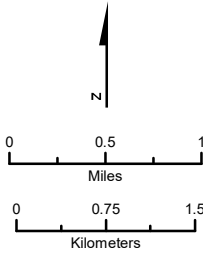


FIGURE 3.13-B-1
Page 5 of 13
Existing Land Uses

FILE: Y:\HSR_BP\GIS\IMXD\5.2.7_CIA\EIR_EIS\RSA_LandUse_Development.mxd (1/23/2021)



SOURCE: National Geographic (2015); CHSRA (10/2019)



- | | | |
|---|---------------------------------|---------------------|
| Station Planning, Land Use, and Development RSA | Existing Land Use - Agriculture | Public |
| Proposed Station | Commercial | Railroads/Utilities |
| Project Subsection Boundary | Industrial | Recreational |
| City/Census Designated Place Boundary | Institutional | Residential |
| County Boundary | Natural Resources | Vacant Land |

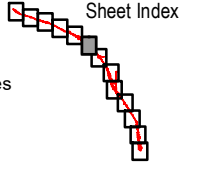
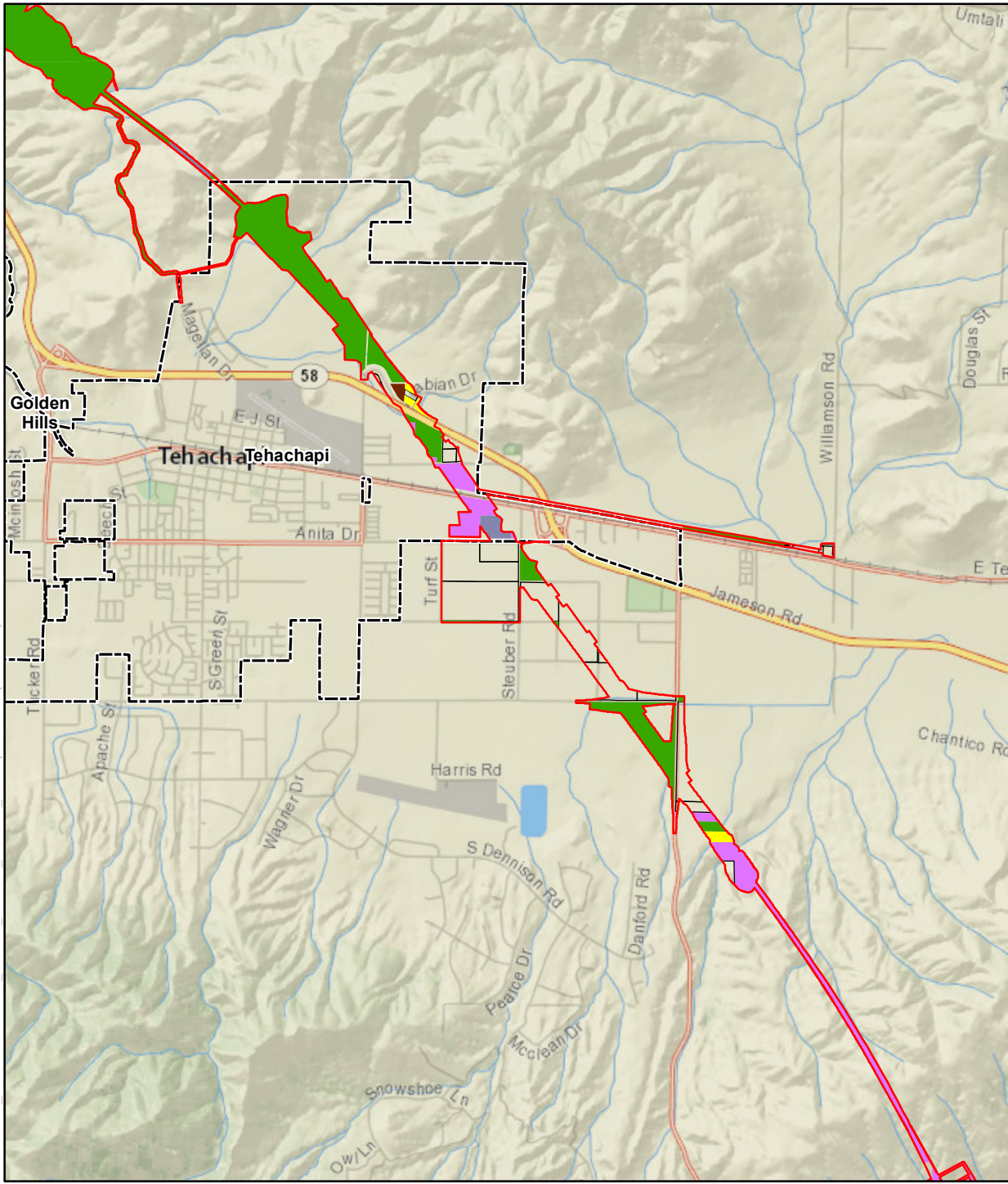


FIGURE 3.13-B-1
Page 6 of 13
Existing Land Uses

FILE: Y:\HSR_BP\GIS\IMXDs\5.2.7_CIA\EIR_EIS\RSA_LandUse_Development.mxd (1/23/2021)

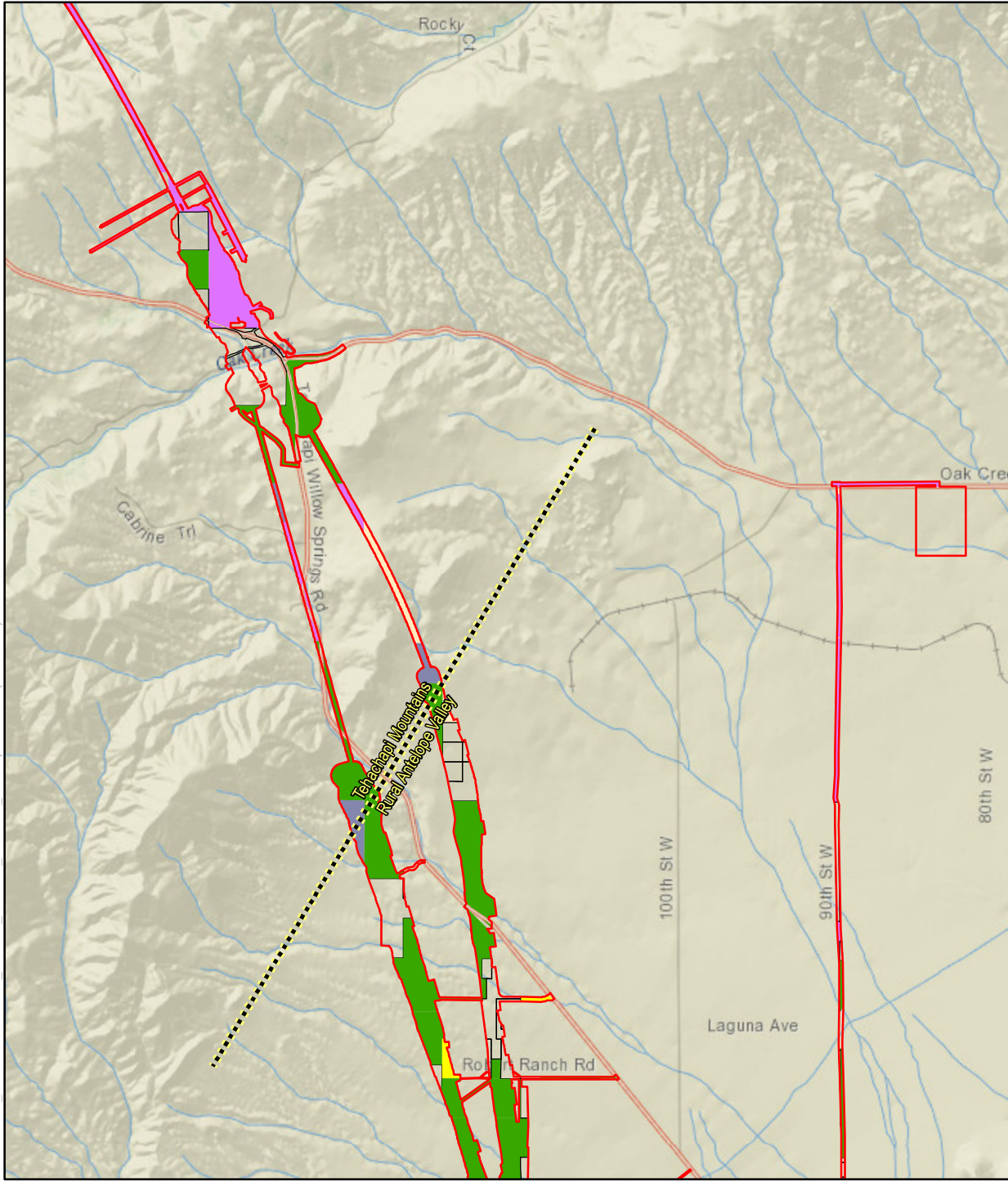


SOURCE: National Geographic (2015); CHSRA (10/2019)

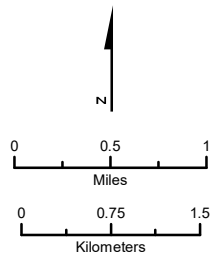
	Station Planning, Land Use, and Development RSA	Existing Land Use: Agriculture	Public
	Proposed Station	Commercial	Railroads/Utilities
	Project Subsection Boundary	Industrial	Recreational
	City/Census Designated Place Boundary	Institutional	Residential
	County Boundary	Natural Resources	Vacant Land

FIGURE 3.13-B-1
Page 7 of 13
Existing Land Uses

FILE: Y:\HSR_BP\GIS\MXDs\5.2.7_CIA\EIR_EIS\RSA_LandUse_Development.mxd (1/23/2021)



SOURCE: National Geographic (2015); CHSRA (10/2019)



- | | | |
|---|--------------------------------|---------------------|
| Station Planning, Land Use, and Development RSA | Existing Land Use: Agriculture | Public |
| Proposed Station | Commercial | Railroads/Utilities |
| Project Subsection Boundary | Industrial | Recreational |
| City/Census Designated Place Boundary | Institutional | Residential |
| County Boundary | Natural Resources | Vacant Land |

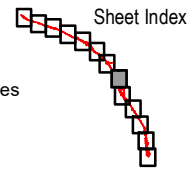
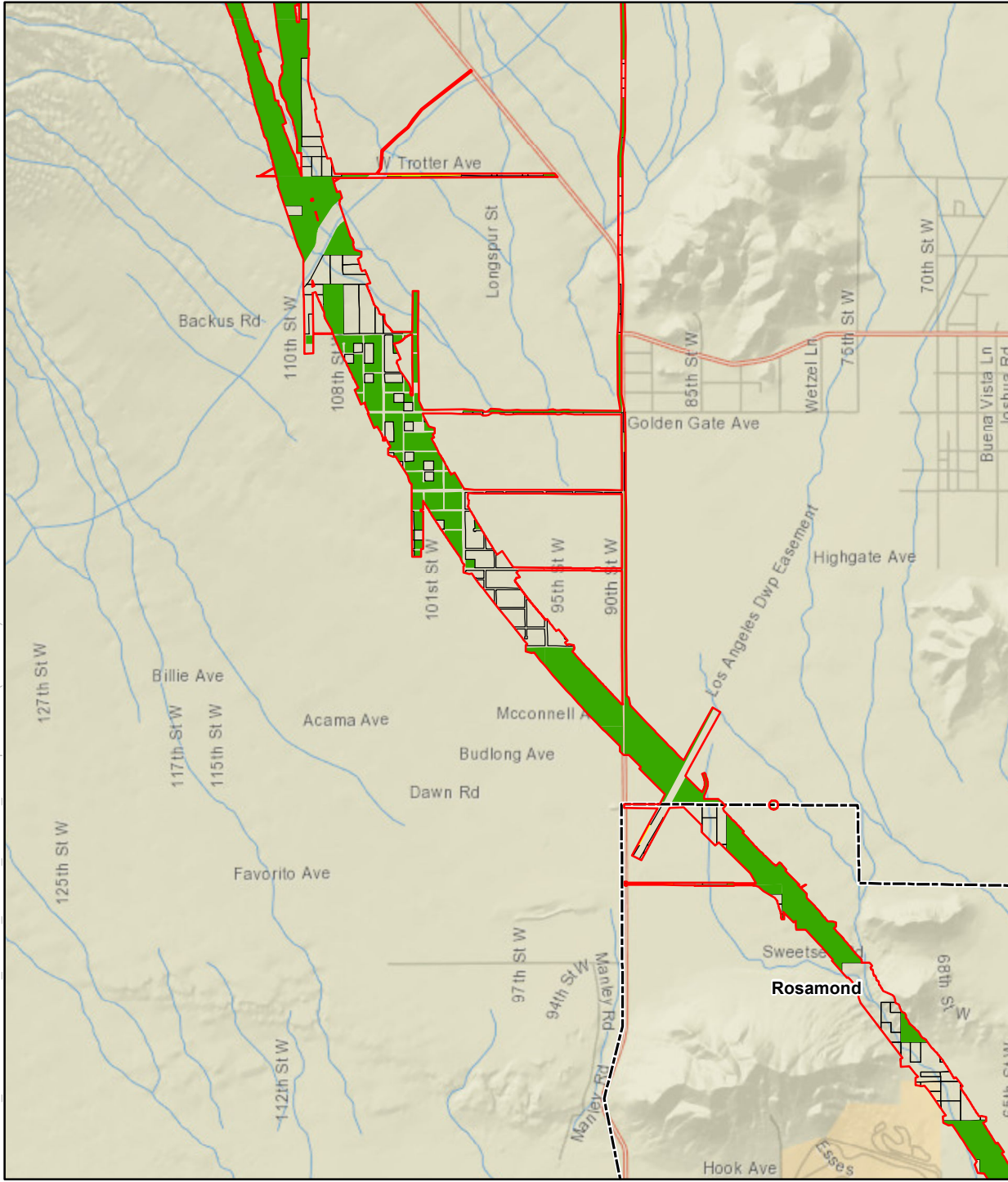
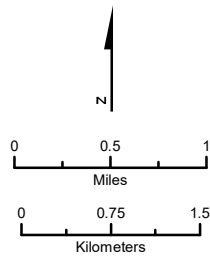


FIGURE 3.13-B-1
Page 8 of 13
Existing Land Uses

FILE: Y:\HSR_BP\GIS\IMXD\5.2.7_CIA\EIR_EIS\RSA_LandUse_Development.mxd (1/23/2021)



SOURCE: National Geographic (2015); CHSRA (10/2019)



- | | | |
|---|---------------------------------|---------------------|
| Station Planning, Land Use, and Development RSA | Existing Land Use - Agriculture | Public |
| Proposed Station | Commercial | Railroads/Utilities |
| Project Subsection Boundary | Industrial | Recreational |
| City/Census Designated Place Boundary | Institutional | Residential |
| County Boundary | Natural Resources | Vacant Land |

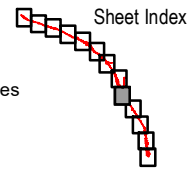
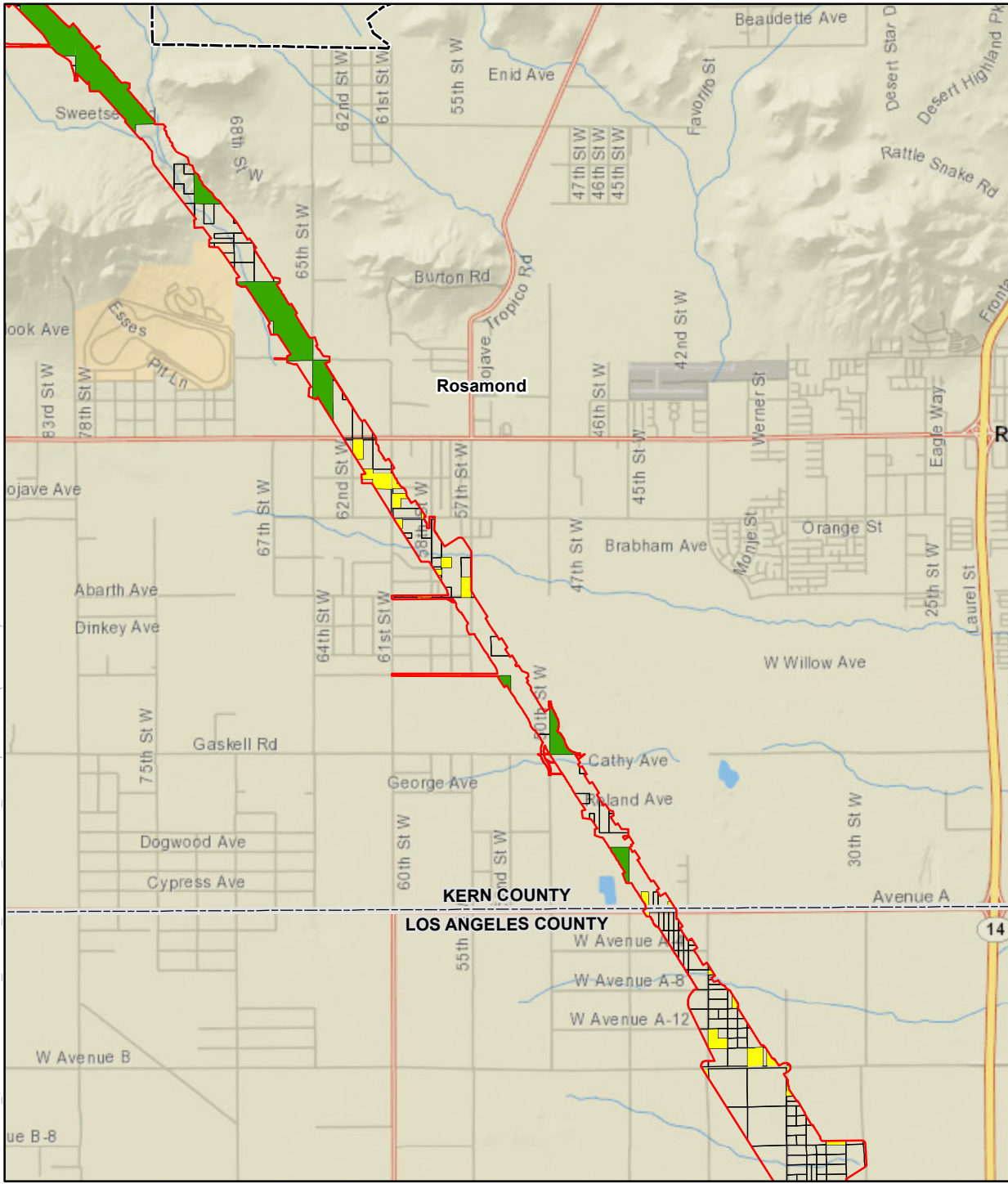
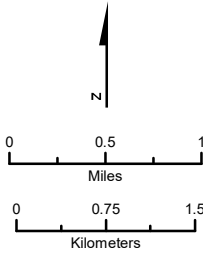


FIGURE 3.13-B-1
Page 9 of 13
Existing Land Uses

FILE: Y:\HSR_BP\GIS\MXDs\5.2.7_CIA\EIR_EIS\RSA_LandUse_Development.mxd (1/23/2021)



SOURCE: National Geographic (2015); CHSRA (10/2019)



- | | | |
|--|--|---|
| Station Planning, Land Use, and Development RSA | Existing Land Use - Agriculture | Public |
| Proposed Station | Commercial | Railroads/Utilities |
| Project Subsection Boundary | Industrial | Recreational |
| City/Census Designated Place Boundary | Residential | Vacant Land |
| County Boundary | Institutional | |
| | Natural Resources | |

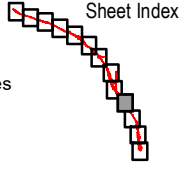
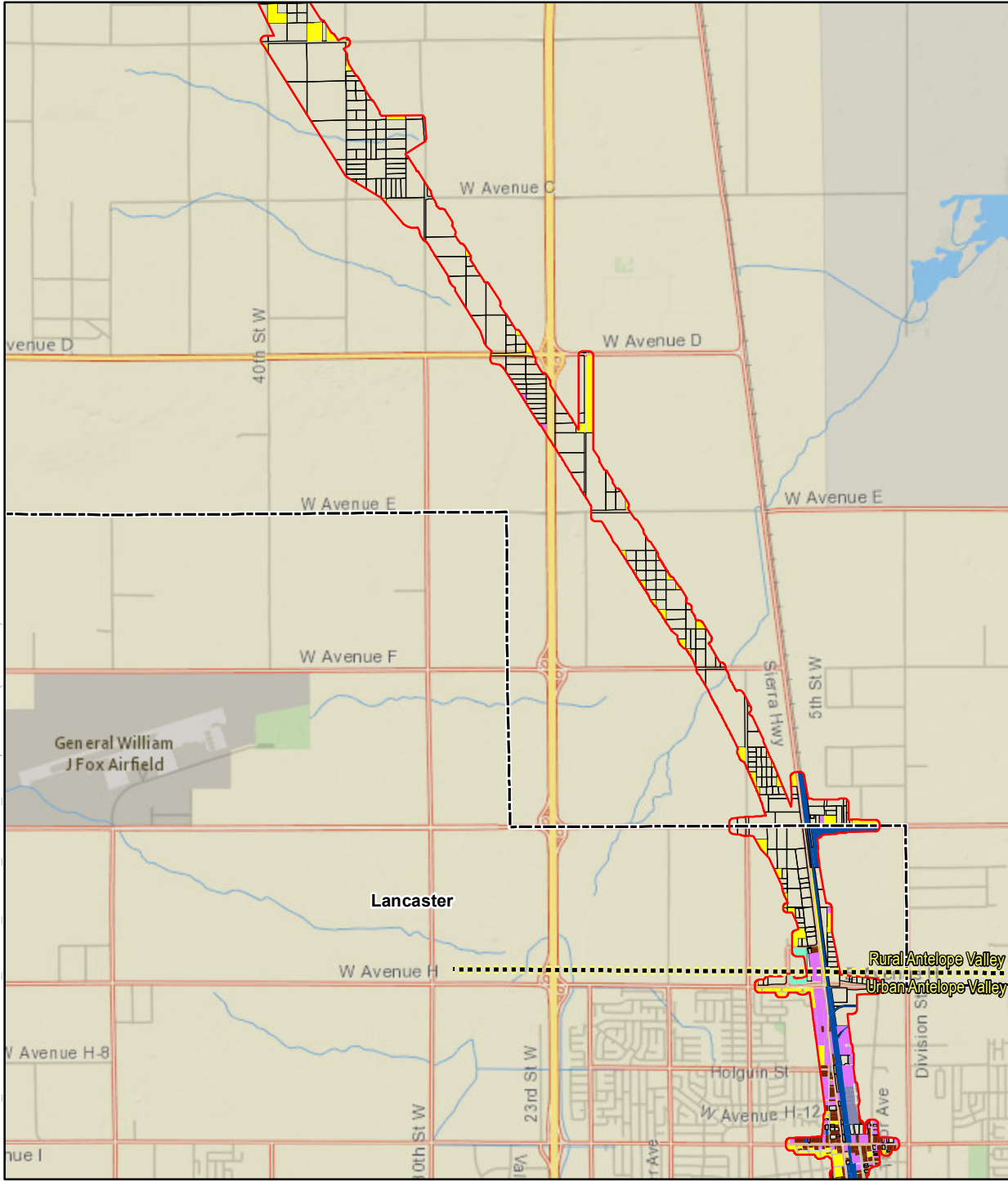
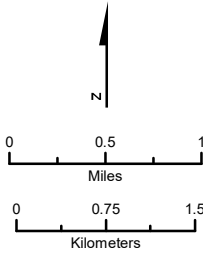


FIGURE 3.13-B-1
Page 10 of 13
Existing Land Uses

FILE: Y:\HSR_BP\GIS\MXDs\5.2.7_CIA\EIR_EIS\RSA_LandUse_Development.mxd (1/23/2021)



SOURCE: National Geographic (2015); CHSRA (10/2019)



- Station Planning, Land Use, and Development RSA
- Proposed Station
- Project Subsection Boundary
- City/Census Designated Place Boundary
- County Boundary
- Existing Land Use: Agriculture
- Commercial
- Industrial
- Institutional
- Natural Resources
- Public
- Railroads/Utilities
- Recreational
- Residential
- Vacant Land

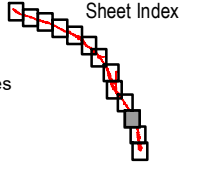
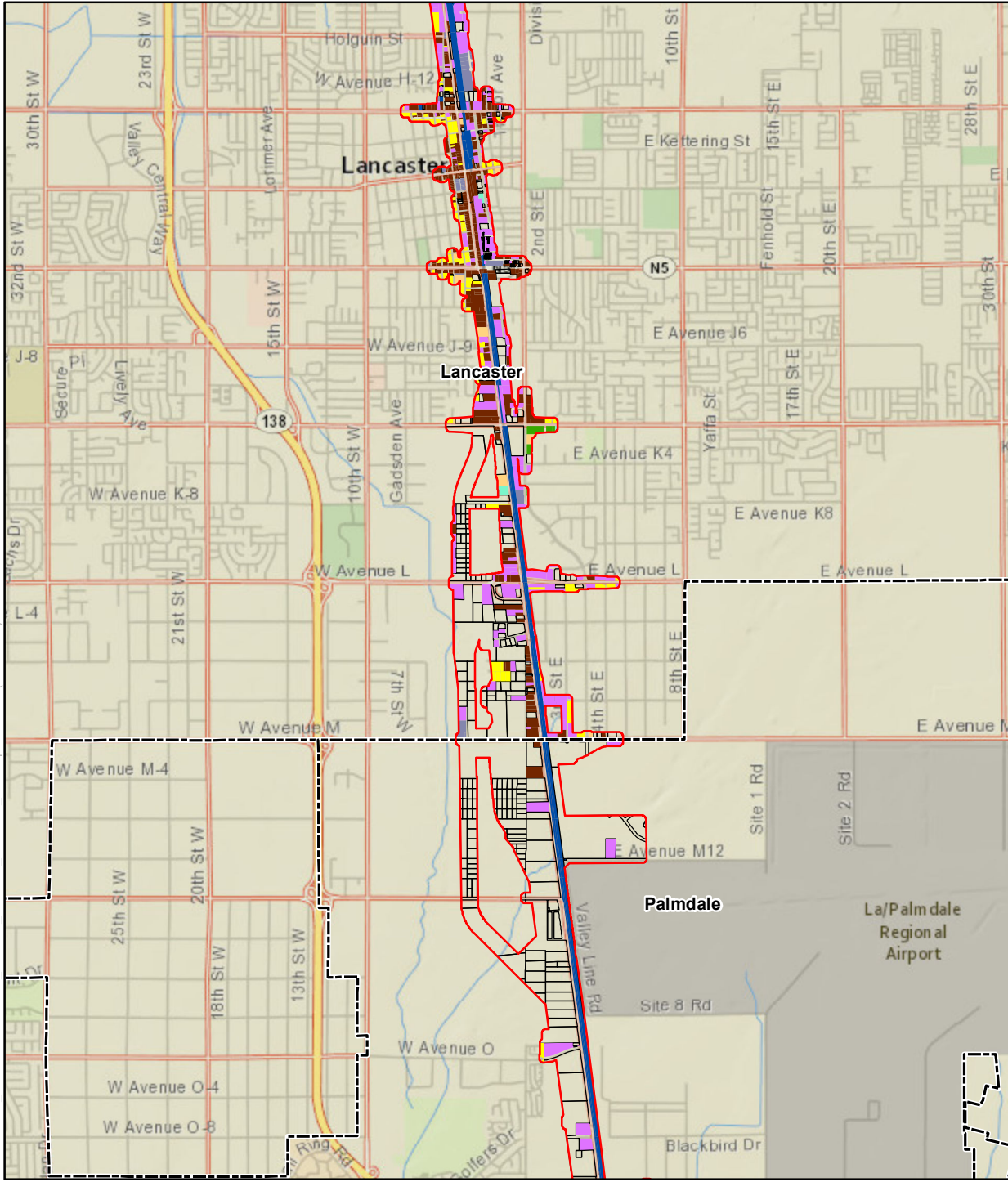
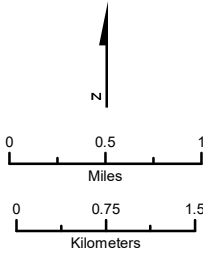


FIGURE 3.13-B-1
Page 11 of 13
Existing Land Uses

FILE: Y:\HSR_BP\GIS\IMXD\5.2.7_CIA\EIR_EIS\RSA_LandUse_Development.mxd (1/23/2021)



SOURCE: National Geographic (2015); CHSRA (10/2019)



- | | | |
|---|---------------------------------|---------------------|
| Station Planning, Land Use, and Development RSA | Existing Land Use - Agriculture | Public |
| Proposed Station | Commercial | Railroads/Utilities |
| Project Subsection Boundary | Industrial | Recreational |
| City/Census Designated Place Boundary | Institutional | Residential |
| County Boundary | Natural Resources | Vacant Land |

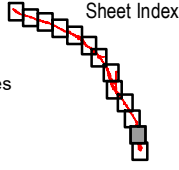
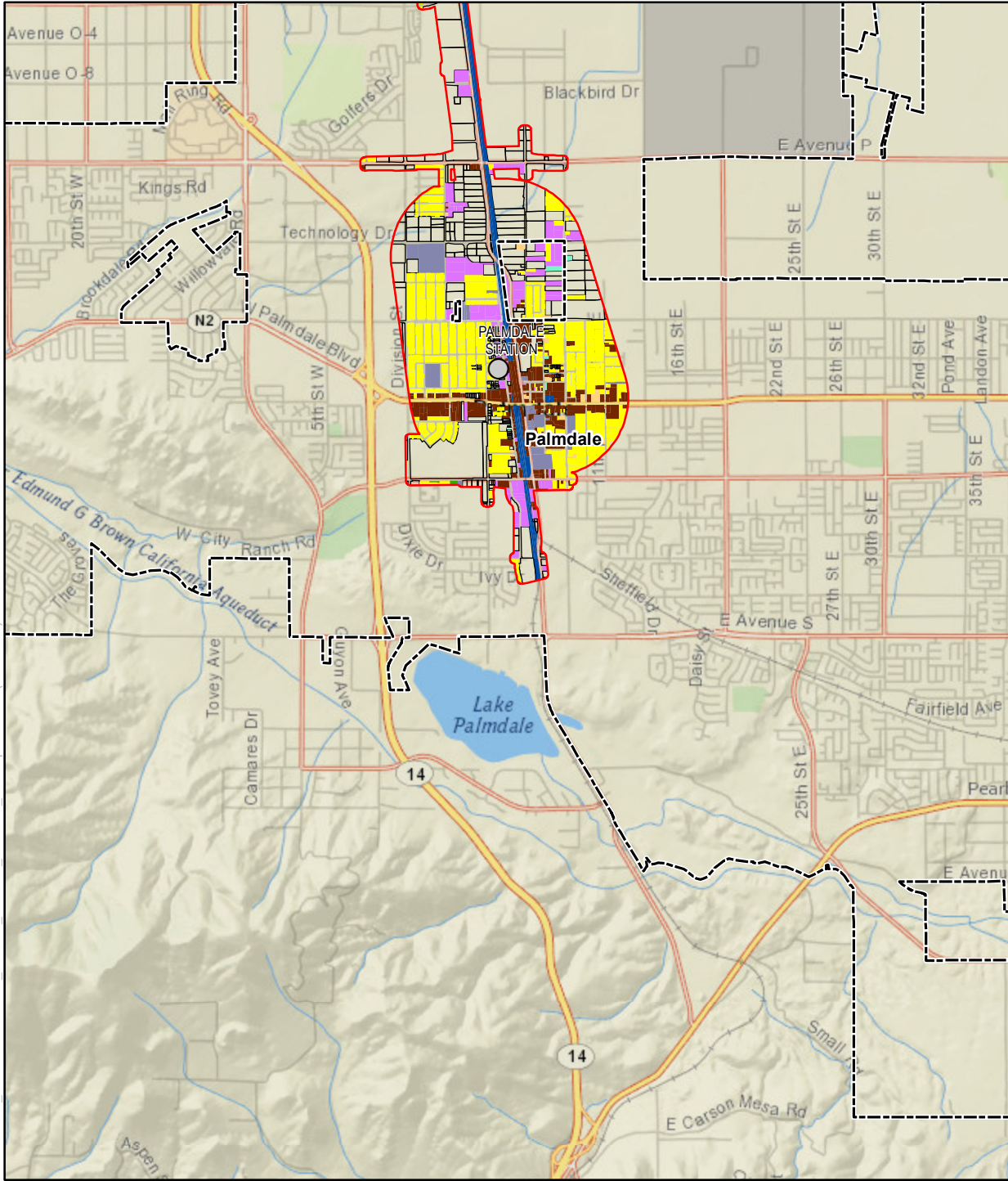
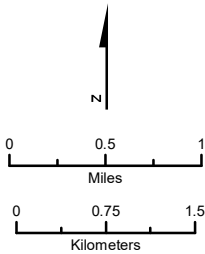


FIGURE 3.13-B-1
Page 12 of 13
Existing Land Uses

FILE: Y:\HSR_BP\GIS\IMXD\5.2.7_CIA\EIR_EIS\RSA_LandUse_Development.mxd (1/23/2021)



SOURCE: National Geographic (2015); CHSRA (10/2019)



- | | | |
|---|---------------------------------|---------------------|
| Station Planning, Land Use, and Development RSA | Existing Land Use - Agriculture | Public |
| Proposed Station | Commercial | Railroads/Utilities |
| Project Subsection Boundary | Industrial | Recreational |
| City/Census Designated Place Boundary | Institutional | Residential |
| County Boundary | Natural Resources | Vacant Land |

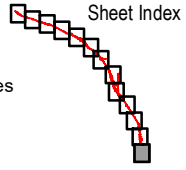
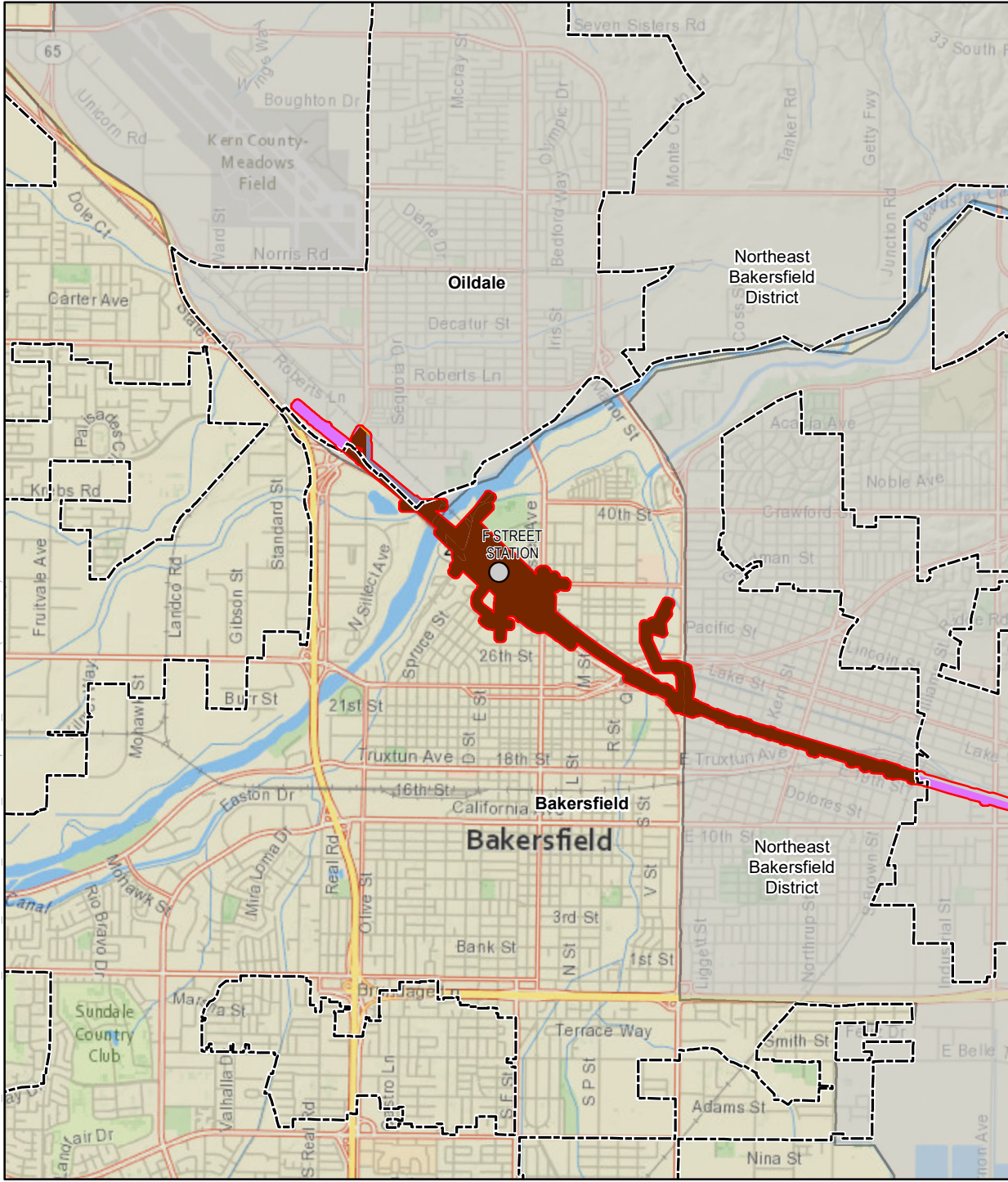
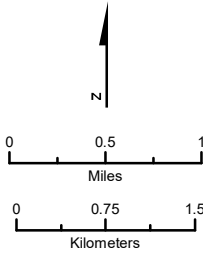


FIGURE 3.13-B-1
Page 13 of 13
Existing Land Uses

FILE: Y:\HSR_BP\GIS\IMXDs\5.2.7_CIA\EIR_EIS\RSA_LandUse_Development_GPLU.mxd (1/23/2021)



SOURCE: National Geographic (2015); CHSRA (10/2019); City of Tehachapi (2016)



- | | | |
|---|-------------------|---------------------------|
| Station Planning, Land Use, and Development RSA | Agriculture | Public |
| Proposed Station | Commercial | Single-Family Residential |
| Project Subsection Boundary | Industrial | Multi-Family Residential |
| City/Census Designated Place Boundary | Mixed Use | Specific Plan |
| Northeast Bakersfield District | Natural Resources | Transportation/Utilities |
| County Boundary | | |

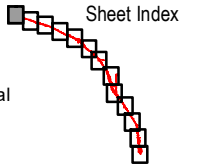
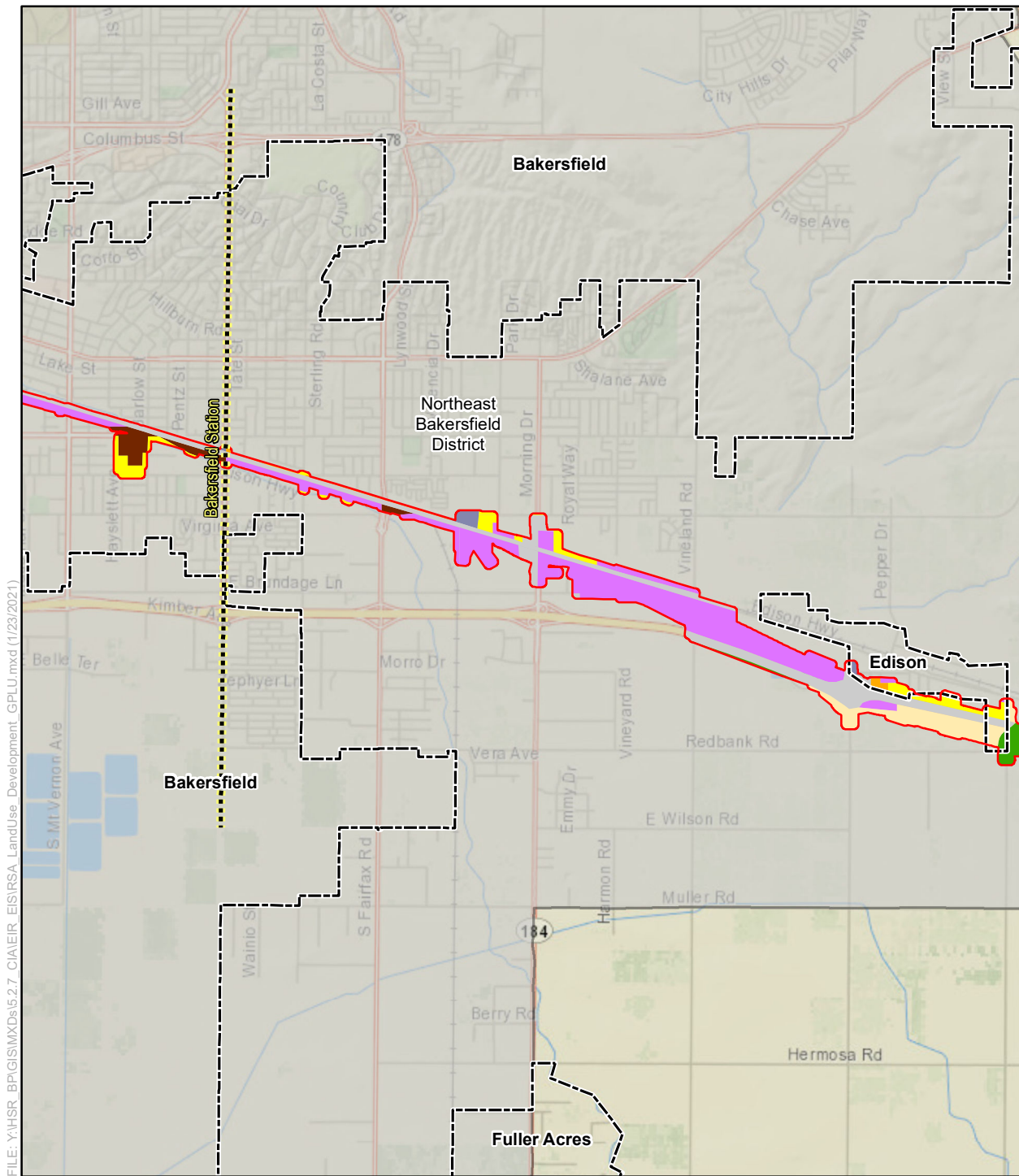


FIGURE 3.13-B-2
Page 1 of 13
Planned Land Uses



FILE: Y:\HSR_BP\GIS\IMXD\5.2.7_CIA\EIR_EIS\RSA_LandUse_Development_GPLU.mxd (1/23/2021)

SOURCE: National Geographic (2015); CHSRA (10/2019); City of Tehachapi (2016)

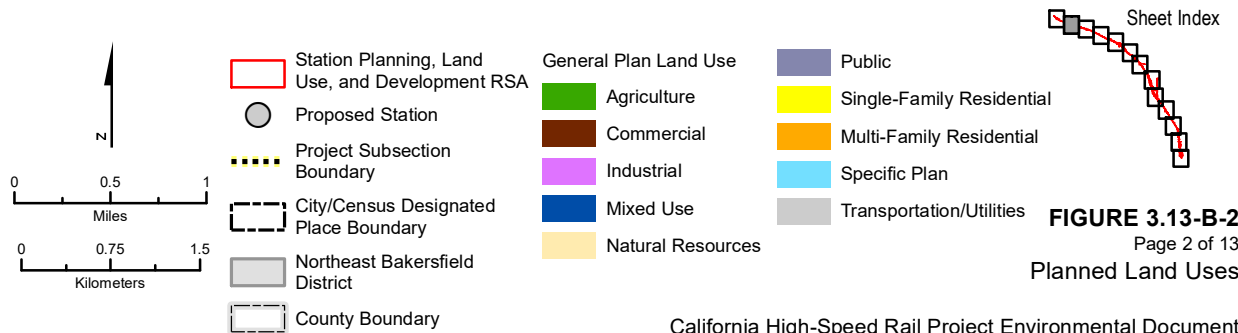
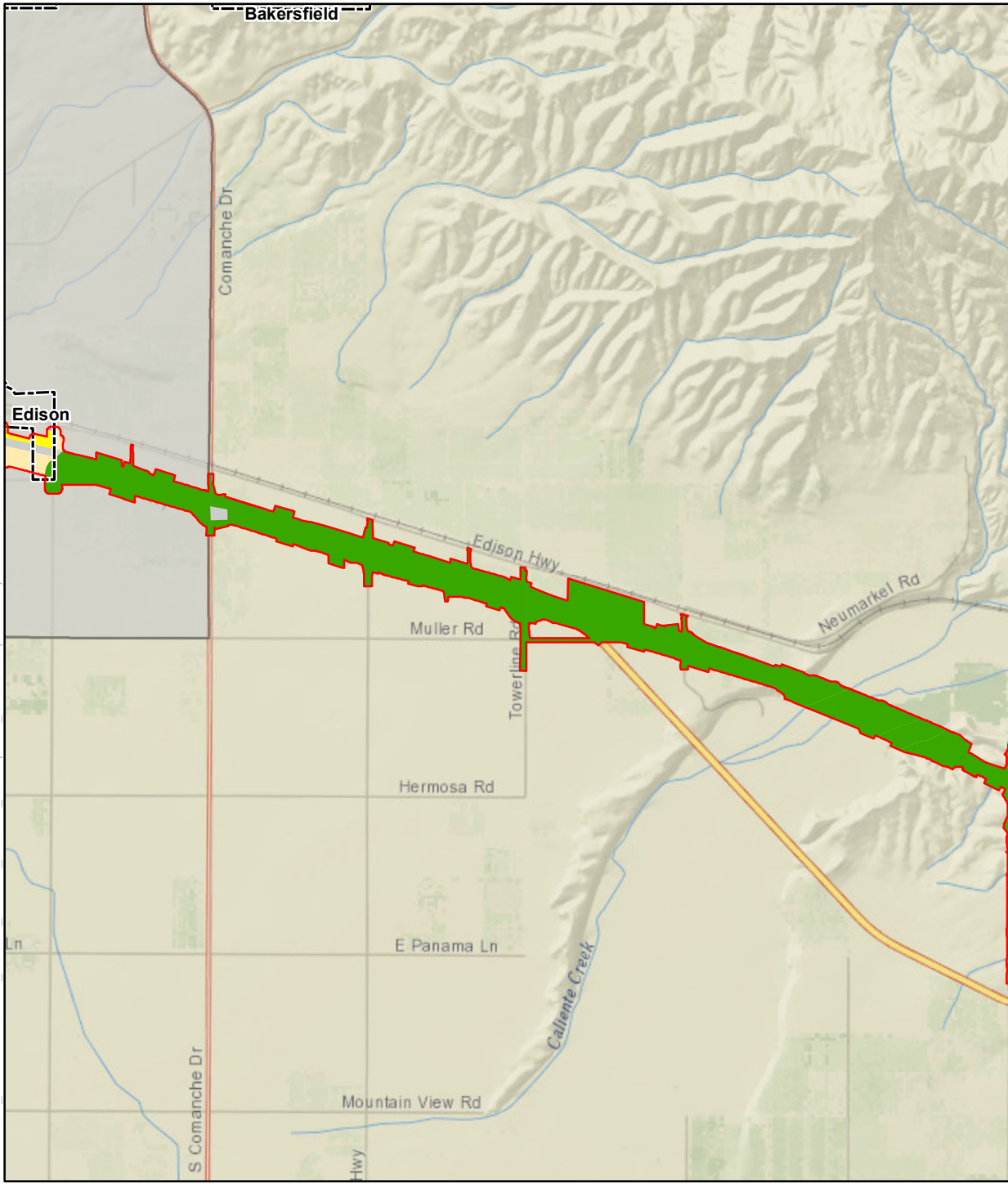
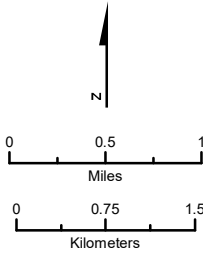


FIGURE 3.13-B-2
Page 2 of 13
Planned Land Uses

FILE: Y:\HSR_BP\GIS\MXDs\5.2.7_CIAVEIR_EIS\RSA_LandUse_Development_GPLU.mxd (1/23/2021)



SOURCE: National Geographic (2015); CHSRA (10/2019); City of Tehachapi (2016)



- | | | |
|---|-------------------|---------------------------|
| Station Planning, Land Use, and Development RSA | Agriculture | Public |
| Proposed Station | Commercial | Single-Family Residential |
| Project Subsection Boundary | Industrial | Multi-Family Residential |
| City/Census Designated Place Boundary | Mixed Use | Specific Plan |
| Northeast Bakersfield District | Natural Resources | Transportation/Utilities |
| County Boundary | | |

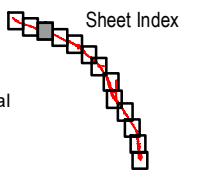
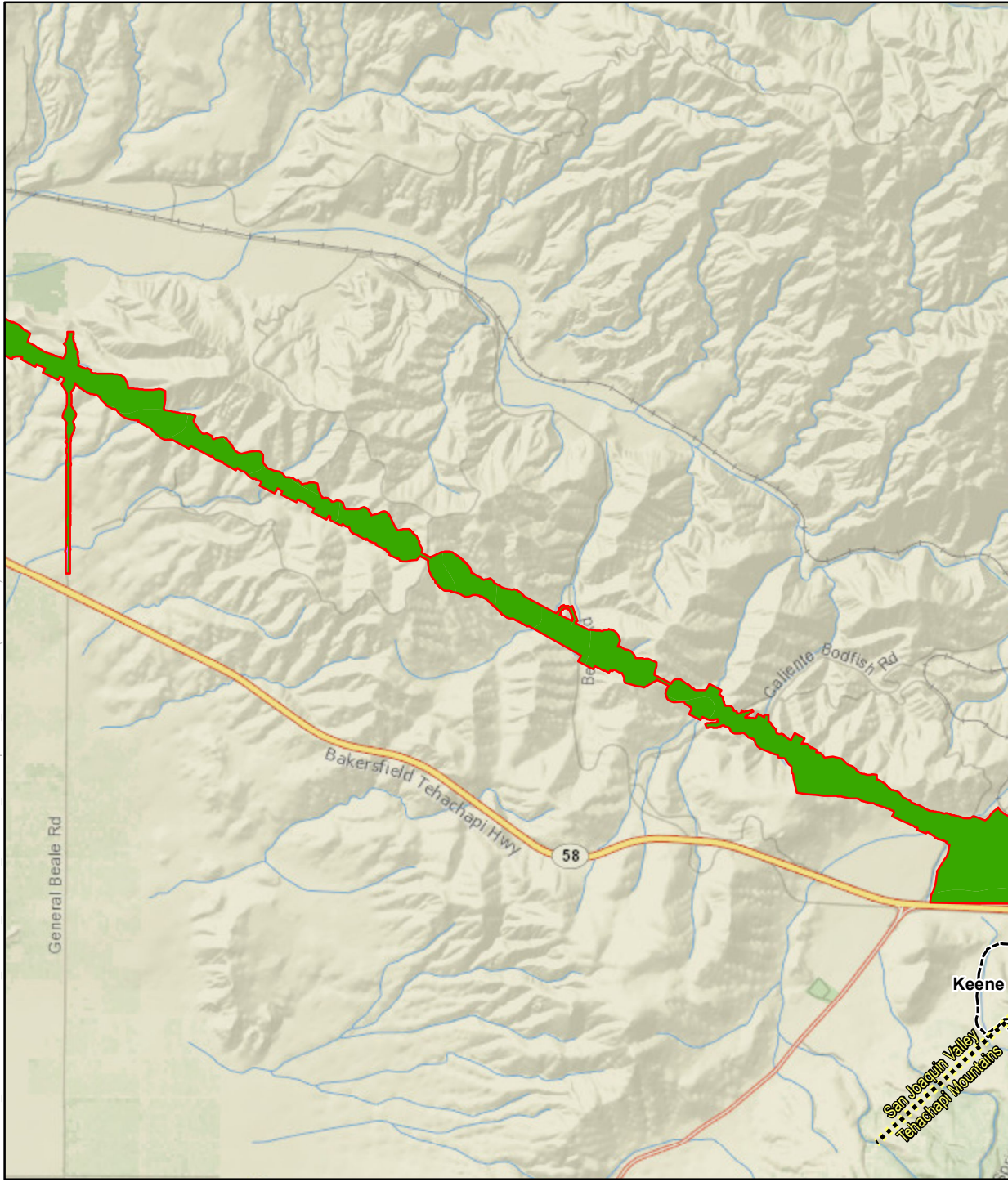


FIGURE 3.13-B-2
Page 3 of 13
Planned Land Uses

FILE: Y:\HSR_BP\GIS\MXDs\5.2.7_CIA\EIR_EIS\RSA_LandUse_Development_GPLU.mxd (1/23/2021)



SOURCE: National Geographic (2015); CHSRA (10/2019); City of Tehachapi (2016)

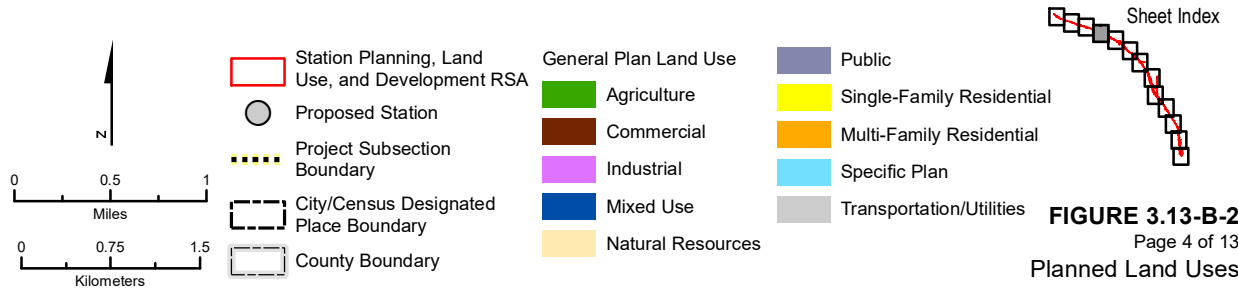
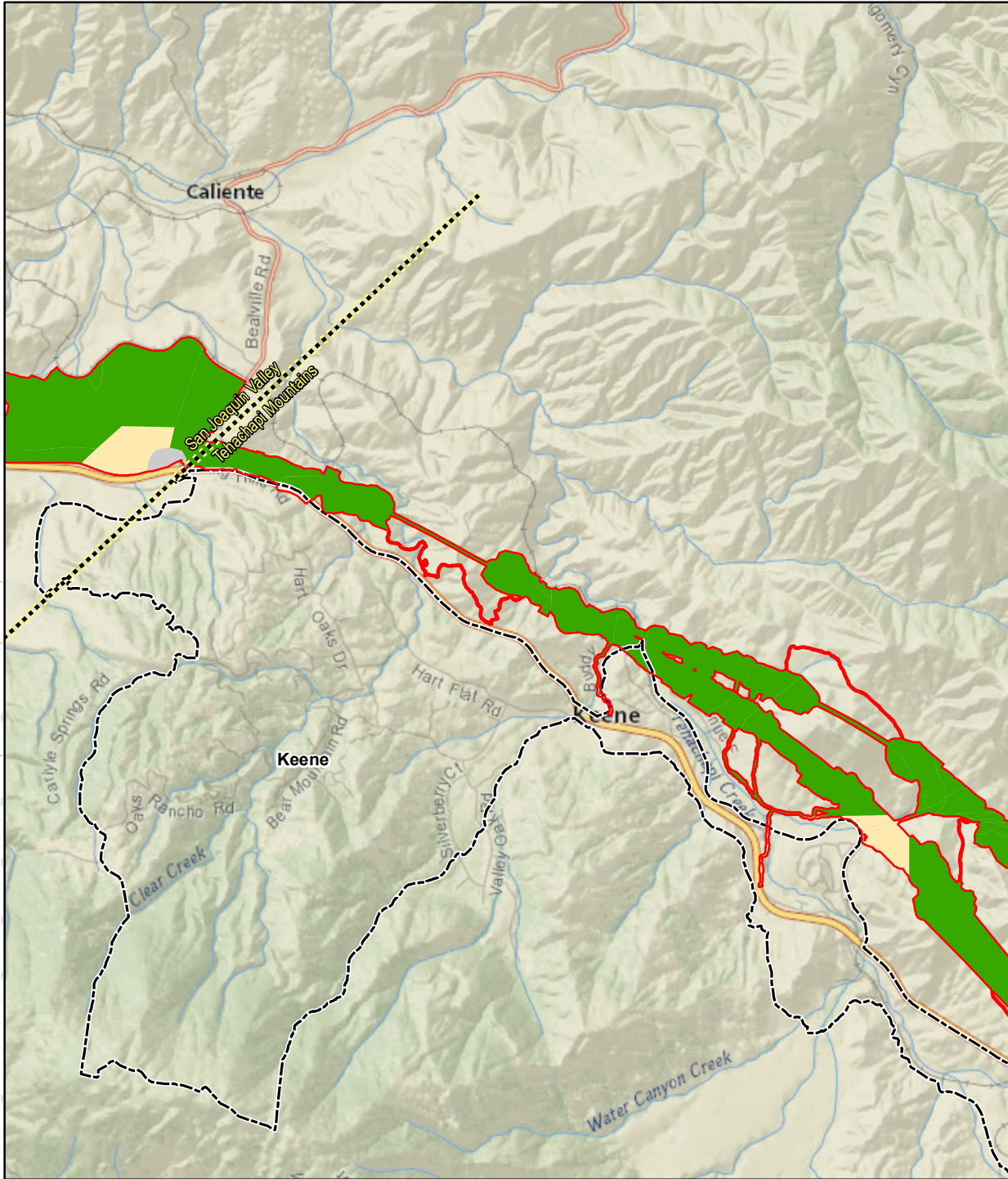
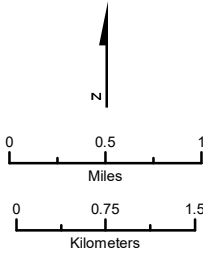


FIGURE 3.13-B-2
Page 4 of 13
Planned Land Uses

FILE: Y:\HSR_BP\GIS\MXDs\5.2.7_CIA\EIR_EIS\RSA_LandUse_Development_GPLU.mxd (1/23/2021)



SOURCE: National Geographic (2015); CHSRA (10/2019); City of Tehachapi (2016)



- | | | |
|---|-------------------|---------------------------|
| Station Planning, Land Use, and Development RSA | Agriculture | Public |
| Proposed Station | Commercial | Single-Family Residential |
| Project Subsection Boundary | Industrial | Multi-Family Residential |
| City/Census Designated Place Boundary | Mixed Use | Specific Plan |
| County Boundary | Natural Resources | Transportation/Utilities |

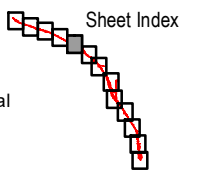
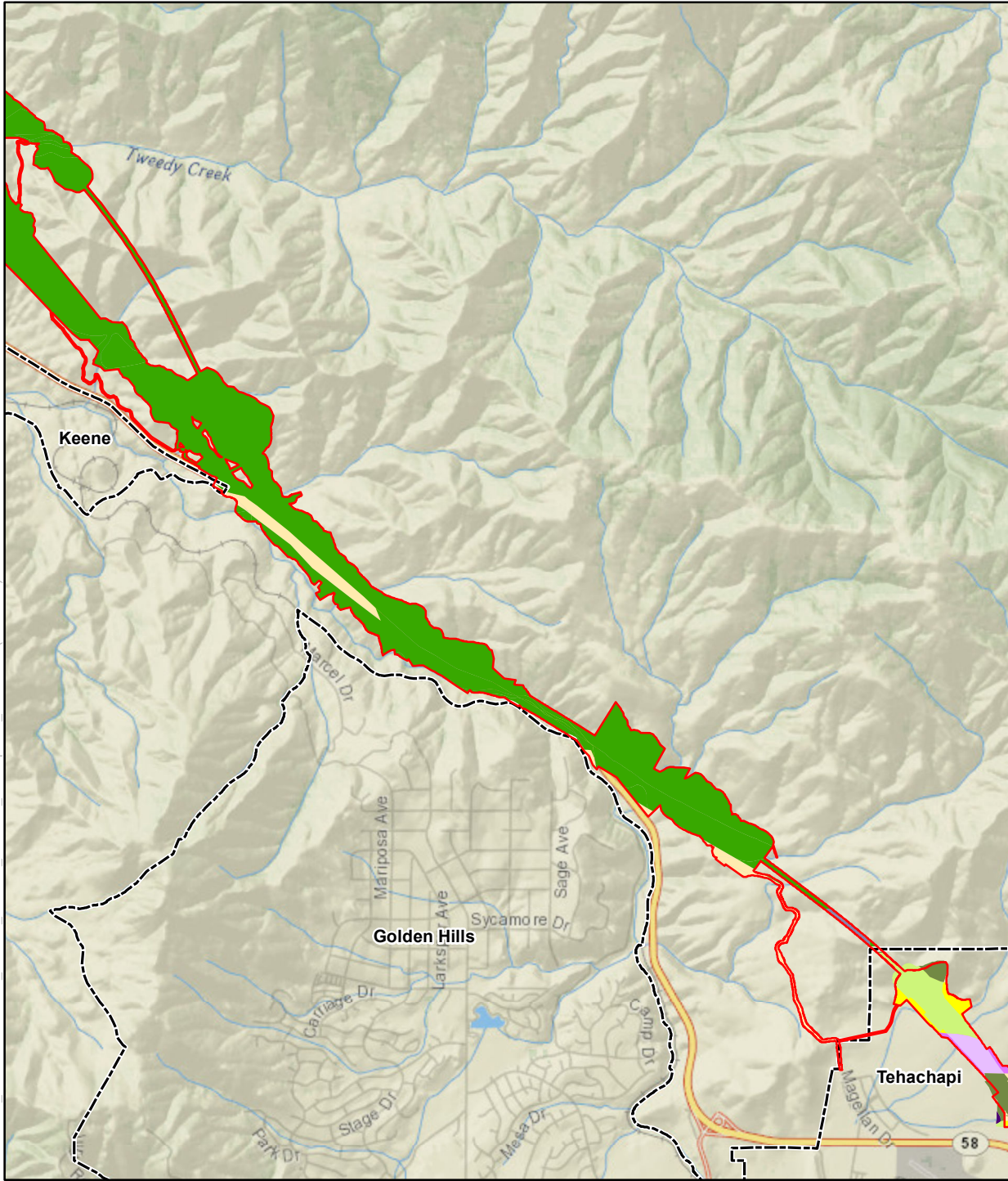


FIGURE 3.13-B-2
Page 5 of 13
Planned Land Uses

FILE: Y:\HSR_BP\GIS\MXDs\5.2.7_CIA\EIR_EIS\RSA_LandUse_Development_GPLU.mxd (1/23/2021)



SOURCE: National Geographic (2015); CHSRA (10/2019); City of Tehachapi (2016)

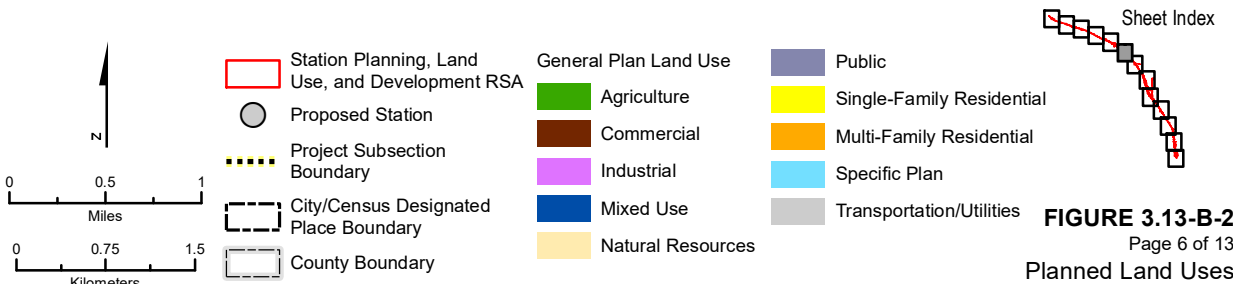
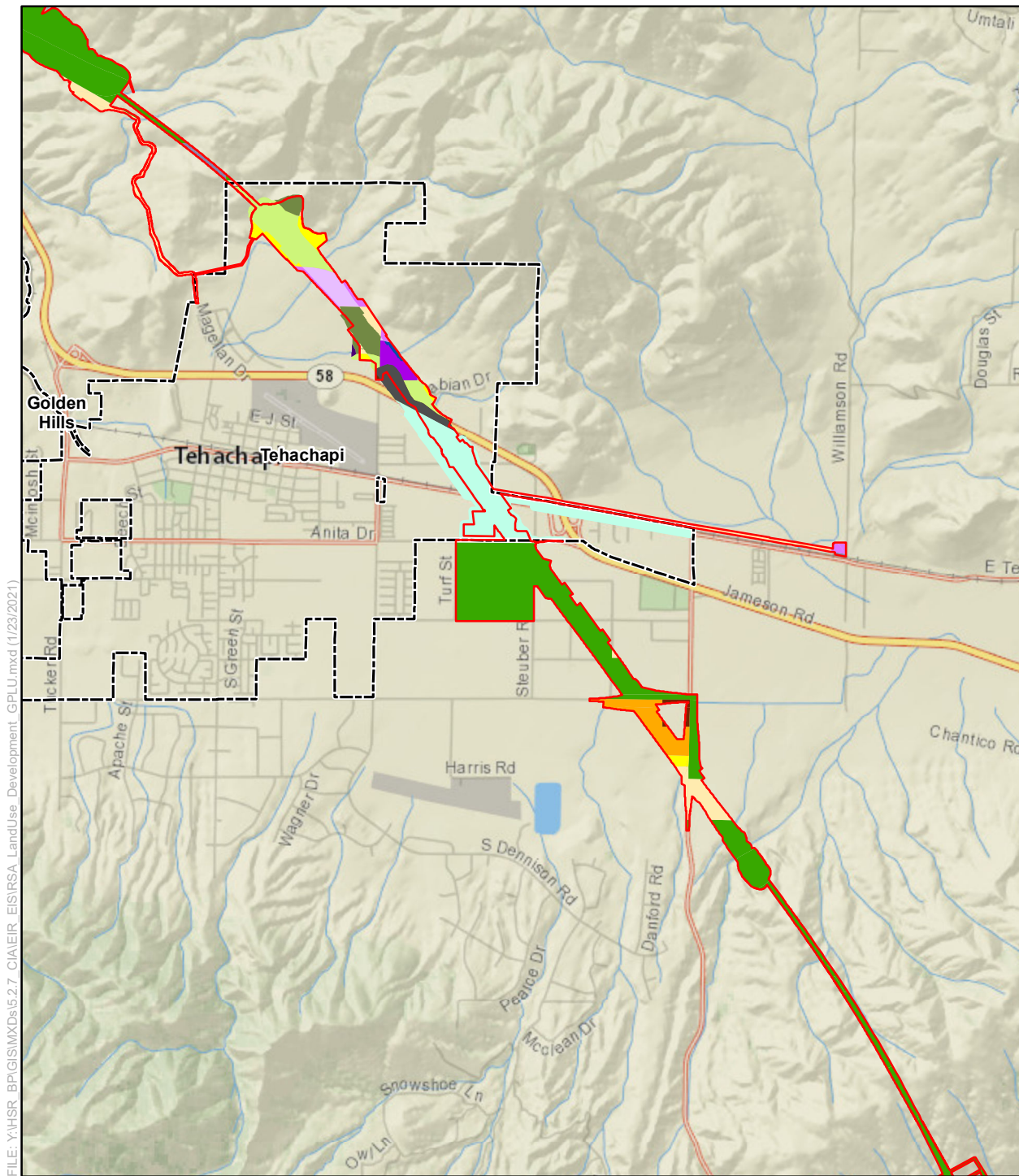
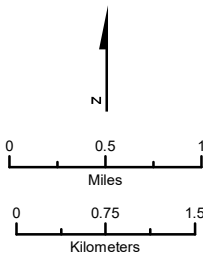


FIGURE 3.13-B-2
Page 6 of 13
Planned Land Uses



FILE: Y:\HSR_BPG\GIS\MXDs\5.2.7_CIA\EIR_EIS\RSA_LandUse_Development_GPLU.mxd (1/23/2021)

SOURCE: National Geographic (2015); CHSRA (10/2019); City of Tehachapi (2016)



- | | | |
|---|-------------------|---------------------------|
| Station Planning, Land Use, and Development RSA | Agriculture | Public |
| Proposed Station | Commercial | Single-Family Residential |
| Project Subsection Boundary | Industrial | Multi-Family Residential |
| City/Census Designated Place Boundary | Mixed Use | Specific Plan |
| County Boundary | Natural Resources | Transportation/Utilities |

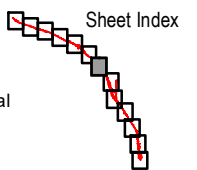
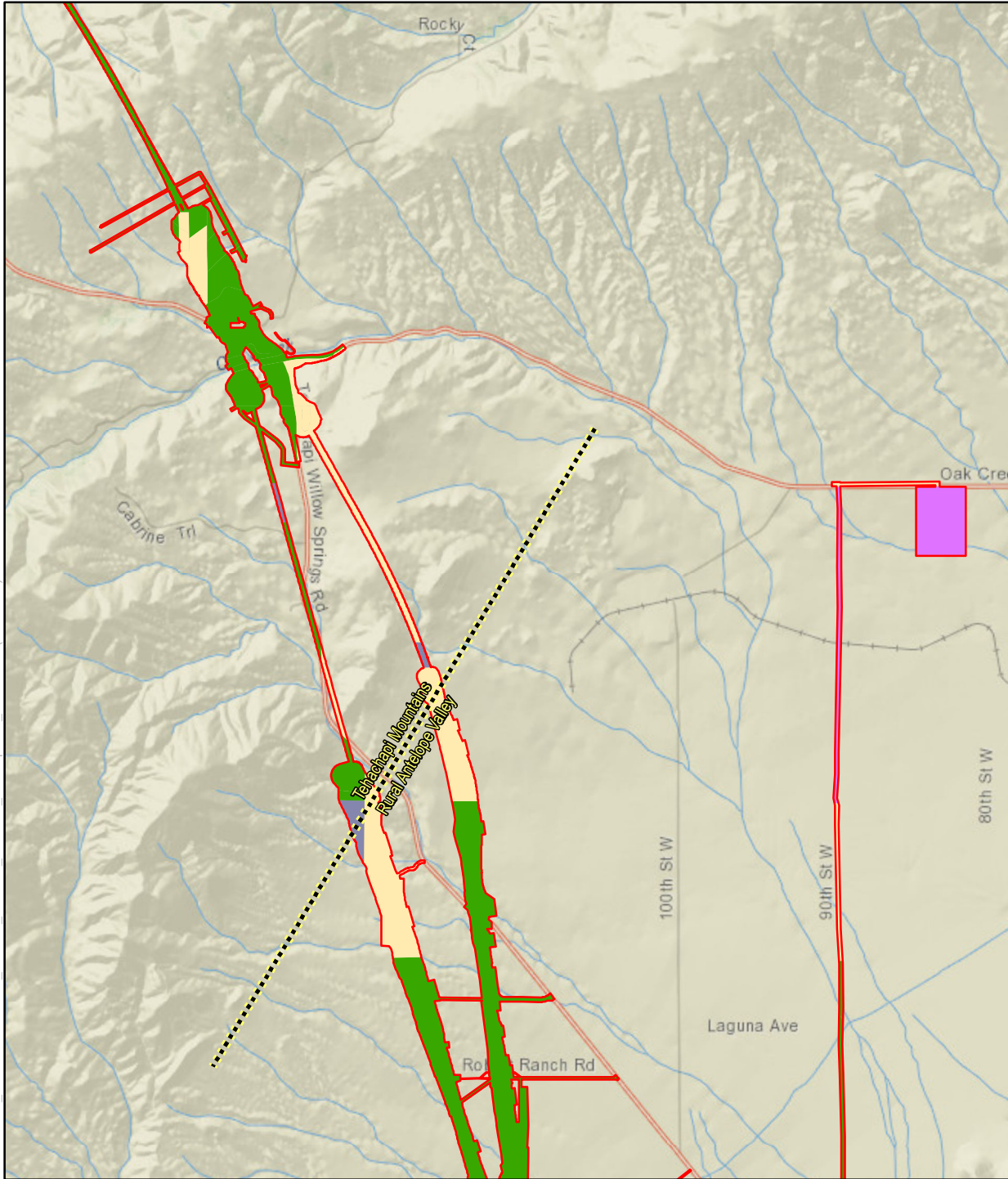
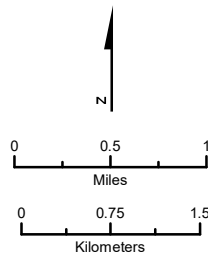


FIGURE 3.13-B-2
Page 7 of 13
Planned Land Uses

FILE: Y:\HSR_BP\GIS\MXDs\5.2.7_CIA\EIR_EIS\RSA_LandUse_Development_GPLU.mxd (1/23/2021)



SOURCE: National Geographic (2015); CHSRA (10/2019); City of Tehachapi (2016)



- | | | |
|---|-------------------|---------------------------|
| Station Planning, Land Use, and Development RSA | Agriculture | Public |
| Proposed Station | Commercial | Single-Family Residential |
| Project Subsection Boundary | Industrial | Multi-Family Residential |
| City/Census Designated Place Boundary | Mixed Use | Specific Plan |
| County Boundary | Natural Resources | Transportation/Utilities |

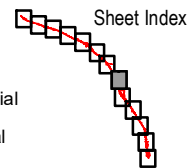
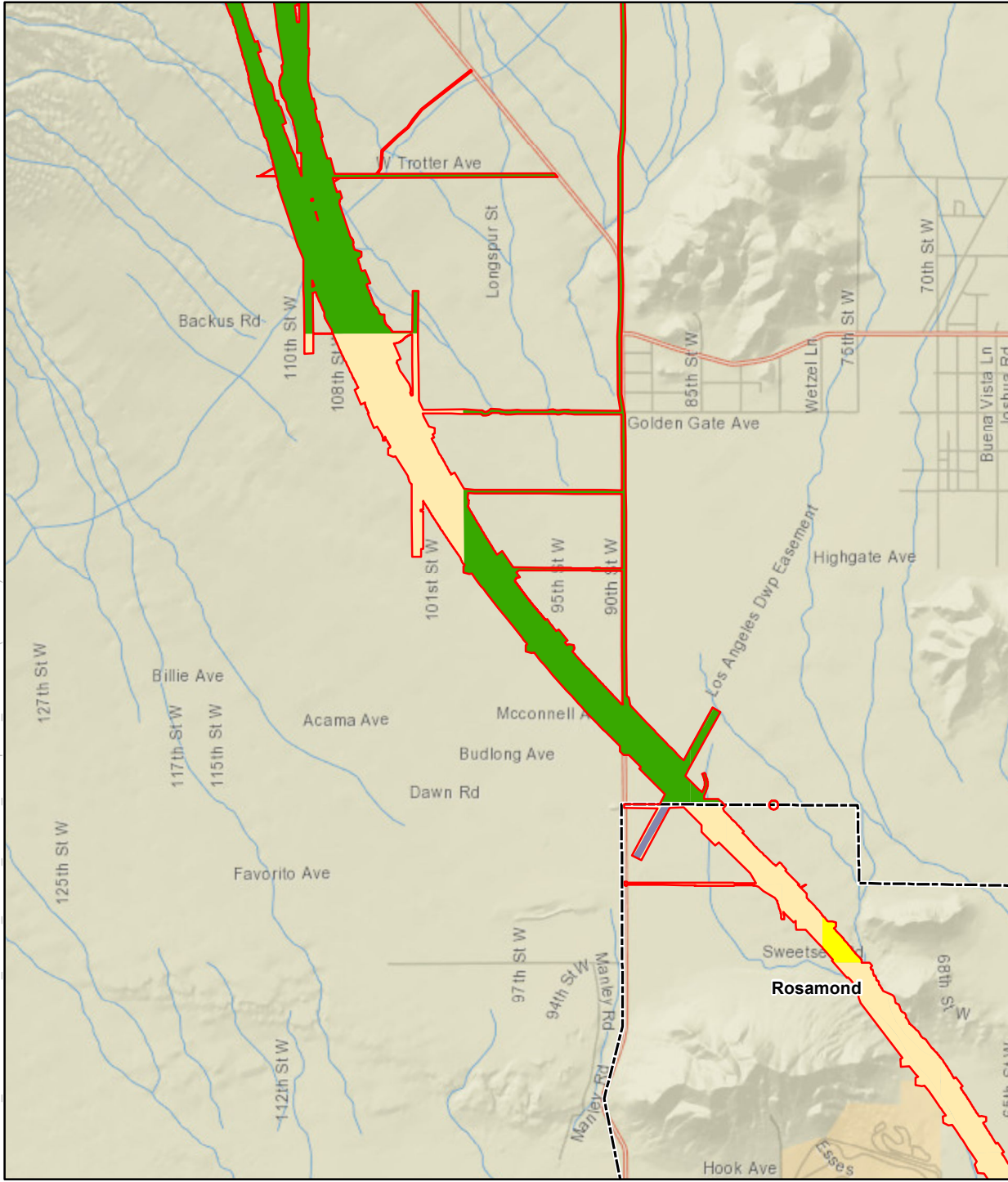
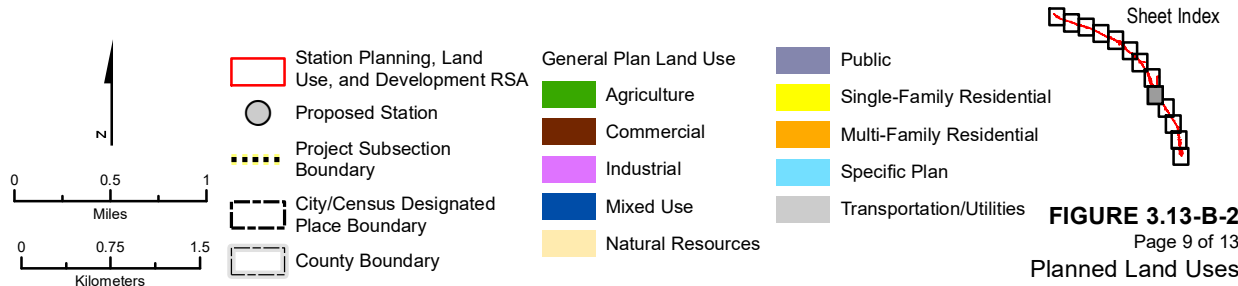


FIGURE 3.13-B-2
Page 8 of 13
Planned Land Uses

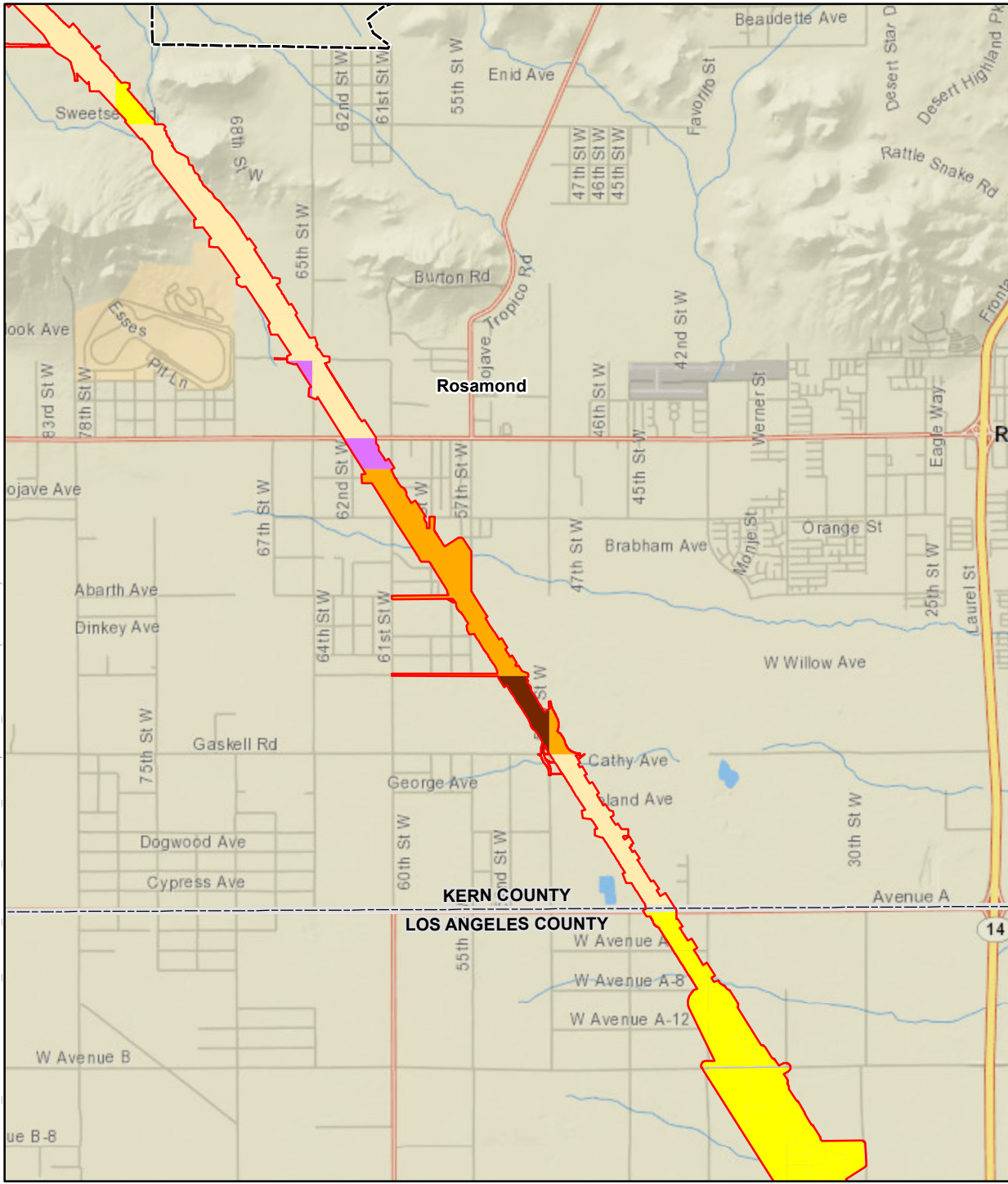
FILE: Y:\HSR_BP\GIS\IMXD\5.2.7_CIA\EIR_EIS\RSA_LandUse_Development_GPLU.mxd (1/23/2021)



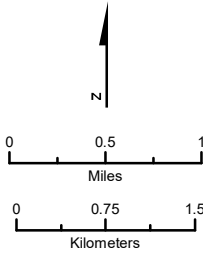
SOURCE: National Geographic (2015); CHSRA (10/2019); City of Tehachapi (2016)



FILE: Y:\HSR_BP\GIS\MXDs\5.2.7_CIA\EIR_EIS\RSA_LandUse_Development_GPLU.mxd (1/23/2021)



SOURCE: National Geographic (2015); CHSRA (10/2019); City of Tehachapi (2016)



- | | | |
|---|-------------------|---------------------------|
| Station Planning, Land Use, and Development RSA | Agriculture | Public |
| Proposed Station | Commercial | Single-Family Residential |
| Project Subsection Boundary | Industrial | Multi-Family Residential |
| City/Census Designated Place Boundary | Mixed Use | Specific Plan |
| County Boundary | Natural Resources | Transportation/Utilities |

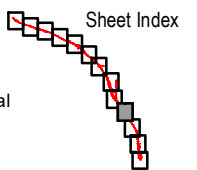
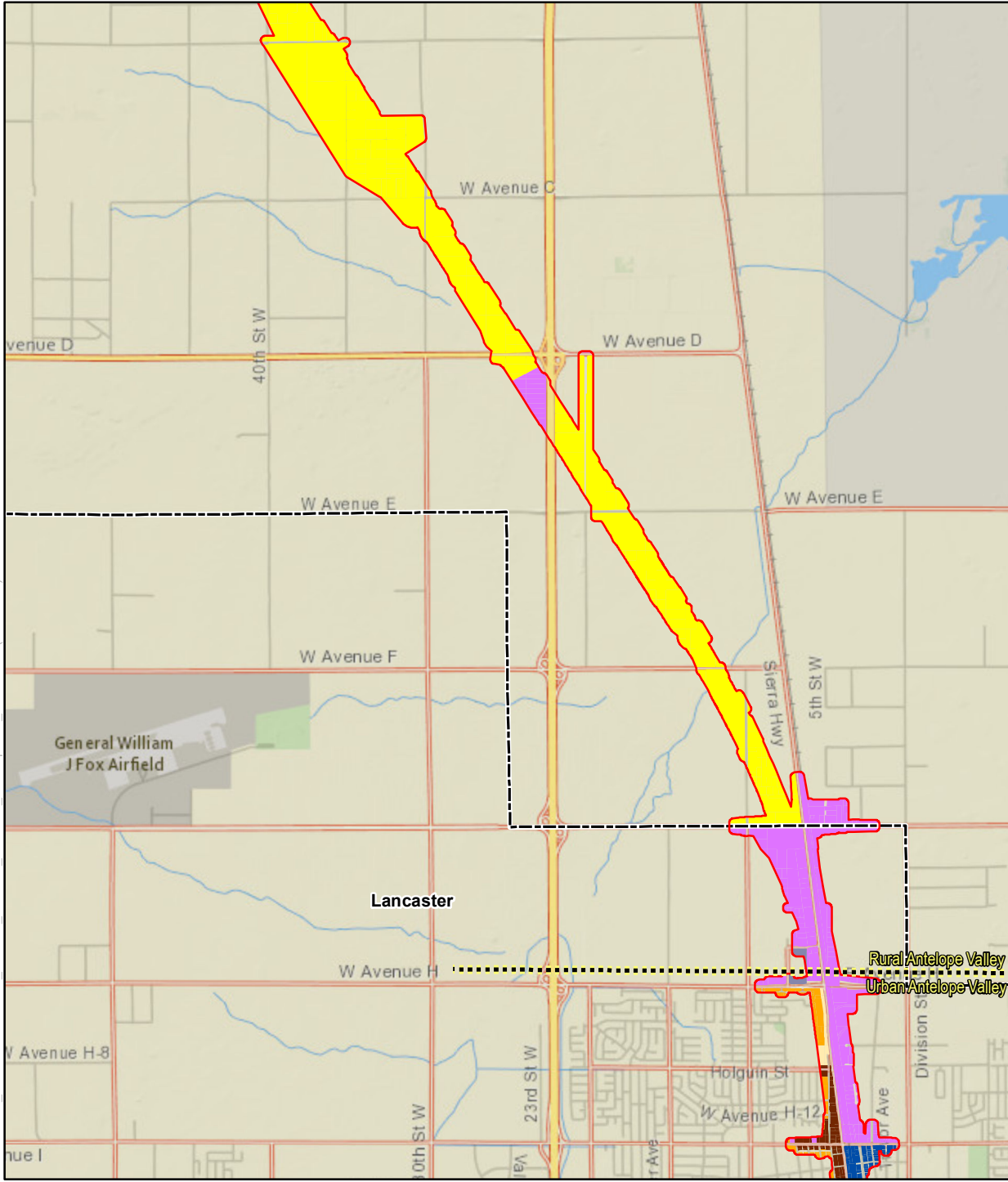


FIGURE 3.13-B-2
Page 10 of 13
Planned Land Uses

FILE: Y:\HSR_BP\GIS\MXDs\5.2.7_CIA\EIR_EIS\RSA_LandUse_Development_GPLU.mxd (1/23/2021)



SOURCE: National Geographic (2015); CHSRA (10/2019); City of Tehachapi (2016)

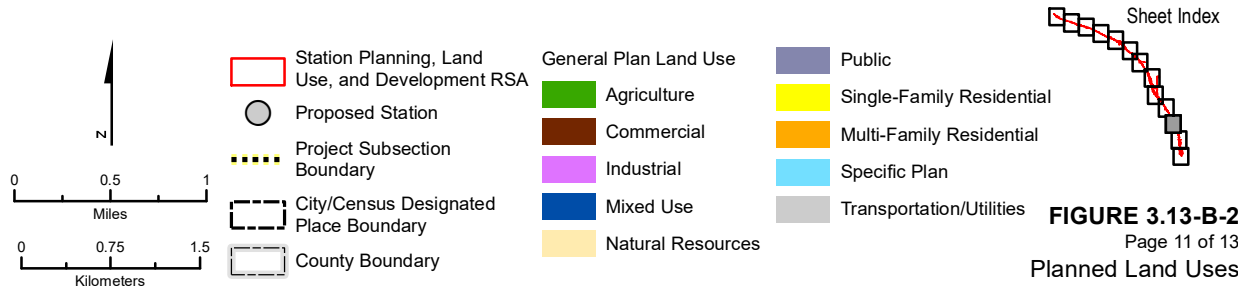
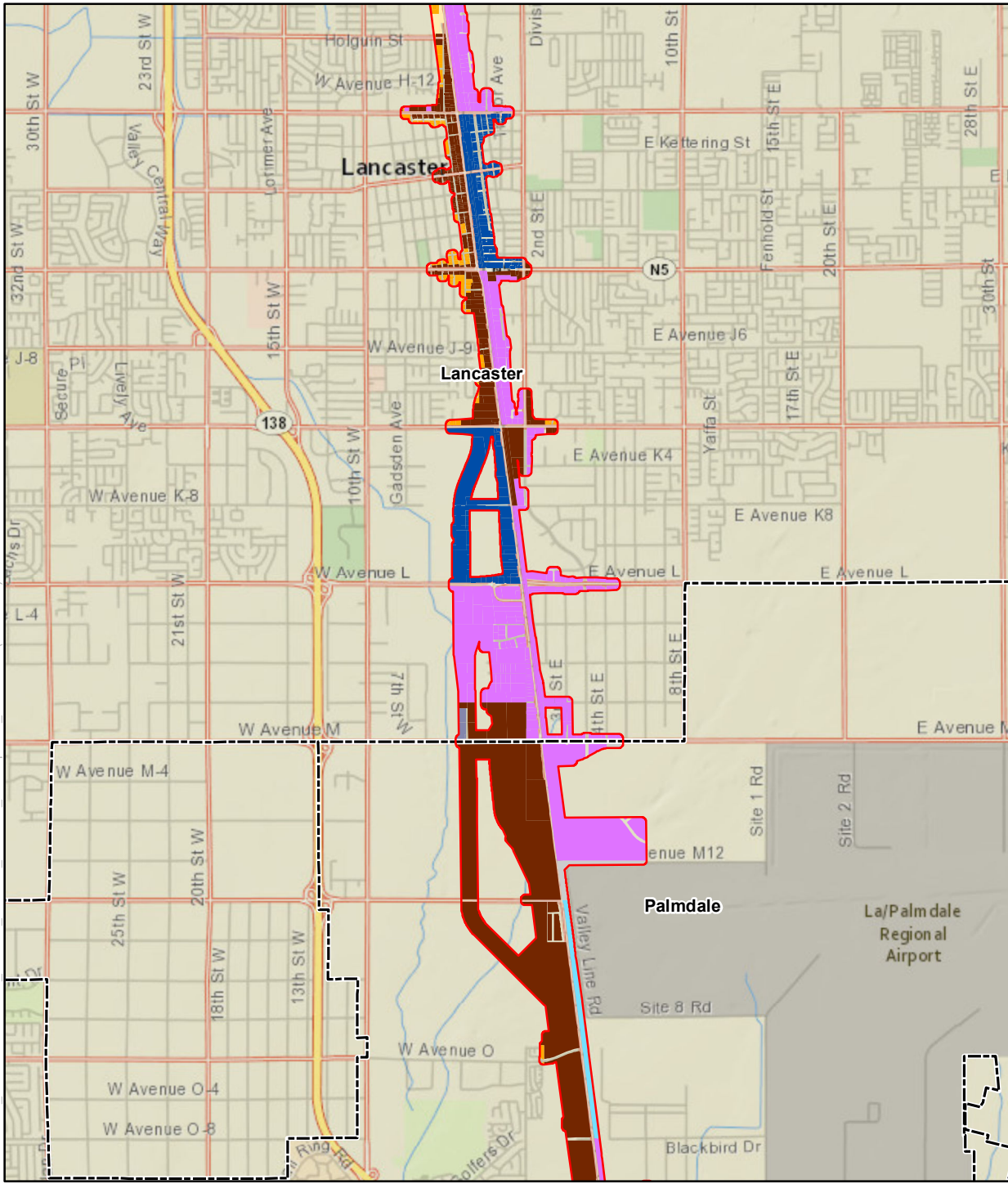
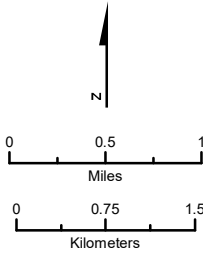


FIGURE 3.13-B-2
Page 11 of 13
Planned Land Uses

FILE: Y:\HSR_BP\GIS\IMXD\5.2.Z_CIAEIR_EIS\RSA_LandUse_Development_GPLU.mxd (1/23/2021)



SOURCE: National Geographic (2015); CHSRA (10/2019); City of Tehachapi (2016)



- | | | |
|---|-------------------|---------------------------|
| Station Planning, Land Use, and Development RSA | Agriculture | Public |
| Proposed Station | Commercial | Single-Family Residential |
| Project Subsection Boundary | Industrial | Multi-Family Residential |
| City/Census Designated Place Boundary | Mixed Use | Specific Plan |
| County Boundary | Natural Resources | Transportation/Utilities |

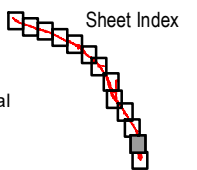
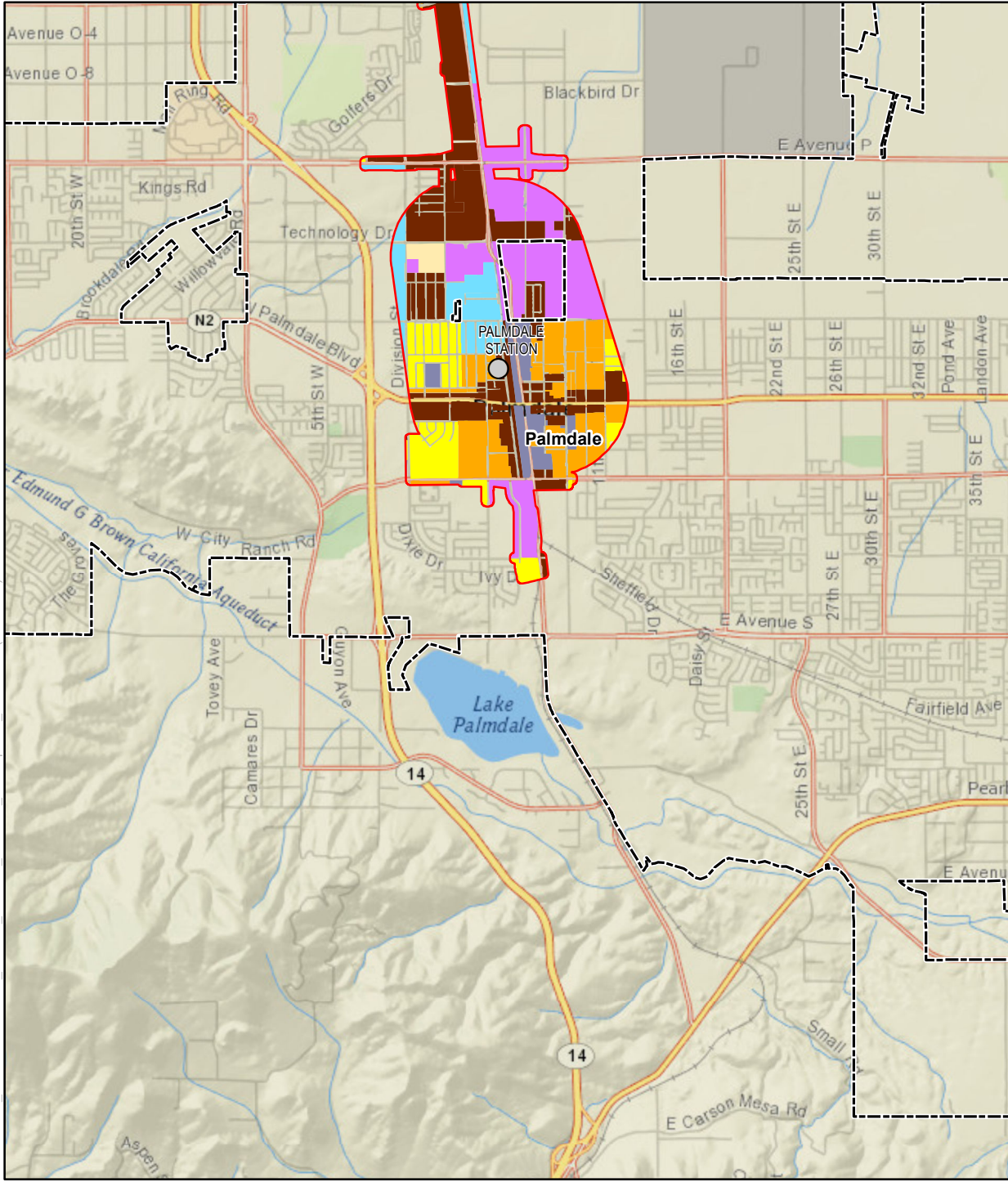
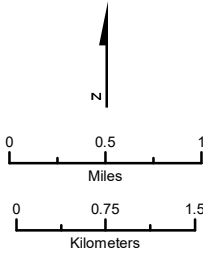


FIGURE 3.13-B-2
Page 12 of 13
Planned Land Uses

FILE: Y:\HSR_BP\GIS\MXDs\5.2.7_CIA\EIR_EIS\RSA_LandUse_Development_GPLU.mxd (1/23/2021)



SOURCE: National Geographic (2015); CHSRA (10/2019); City of Tehachapi (2016)



- | | | |
|---|-------------------|---------------------------|
| Station Planning, Land Use, and Development RSA | Agriculture | Public |
| Proposed Station | Commercial | Single-Family Residential |
| Project Subsection Boundary | Industrial | Multi-Family Residential |
| City/Census Designated Place Boundary | Mixed Use | Specific Plan |
| County Boundary | Natural Resources | Transportation/Utilities |

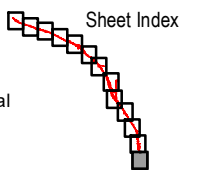
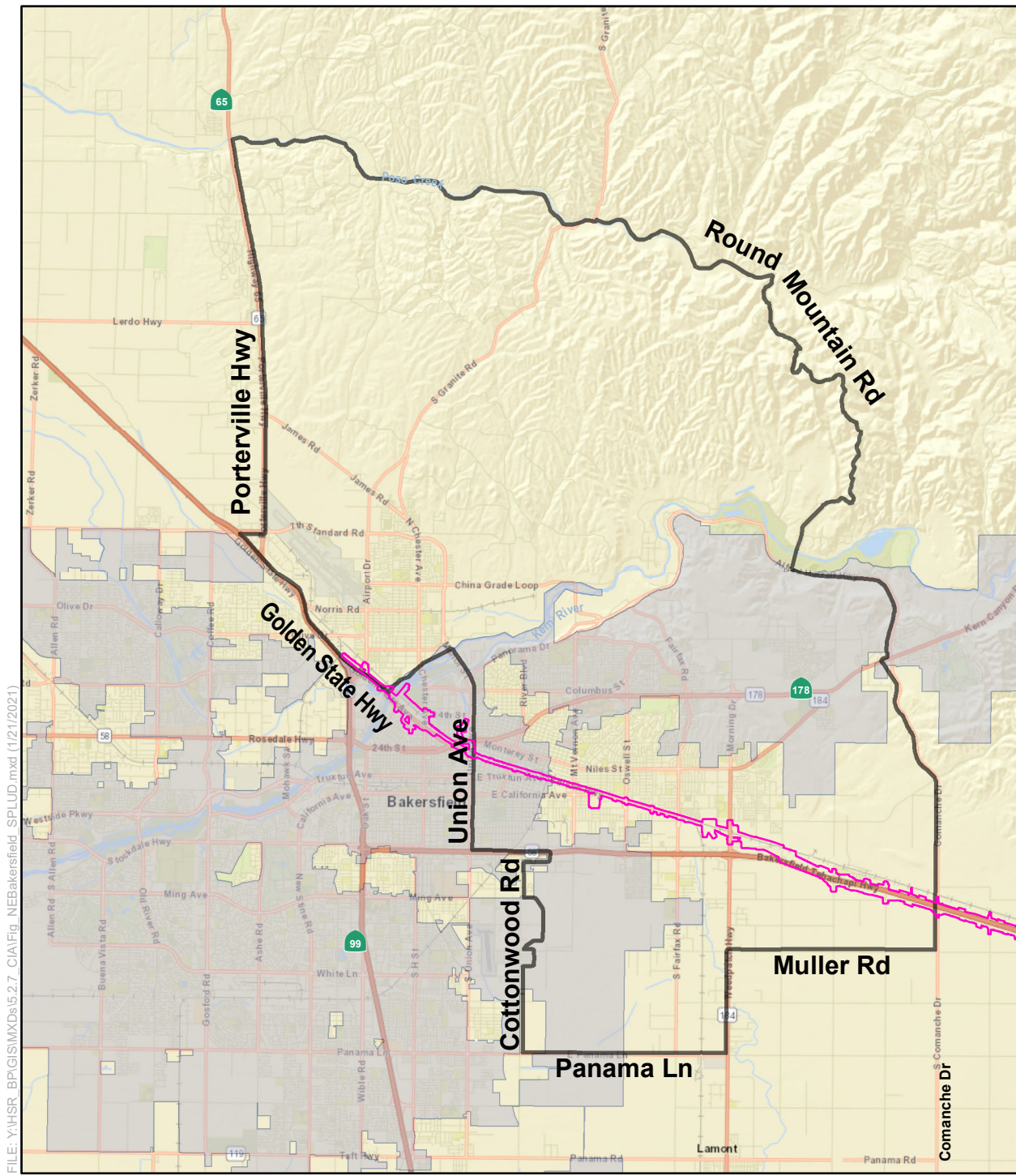
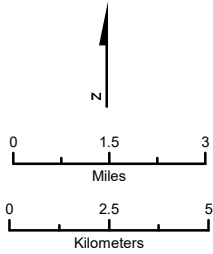


FIGURE 3.13-B-2
Page 13 of 13
Planned Land Uses



FILE: Y:\HSR_BP\GIS\MXDs\5.2.7_CIA\Fig_NE\Bakersfield_SPLUD.mxd (1/21/2021)

SOURCE: National Geographic (2015); CHSRA (4/2016, 8/2018, 10/2019)



- Station Planning, Land Use, and Development RSA
- Northeast Bakersfield District
- City of Bakersfield

Figure 3.13-B-3

Northeast Bakersfield

This page intentionally left blank