

California High-Speed Rail Authority

Bakersfield to Palmdale

Project Section

Final Project Environmental Impact Report/Environmental Impact Statement

Appendix 3.10-A: Sites of Potential Environmental Concern

May 2021



The environmental review, consultation, and other actions required by applicable Federal environmental laws for this project are being or have been carried out by the State of California pursuant to 23 U.S.C. 327 and a Memorandum of Understanding dated July 23, 2019, and executed by the Federal Railroad Administration and the State of California.

APPENDIX 3.10-A SITES OF POTENTIAL ENVIRONMENTAL CONCERN

Since publication of the Draft Environmental Impact Report/Environmental Impact Statement (EIR/EIS), the following substantive changes have been made to this appendix:

- The sites of potential environmental concern (PEC) were updated based on the engineering and design refinements described in the Preface and Chapter 2.
- The figures were updated to reflect the revised project footprint.

Table 3.10-A-1 Potential Environmental Concern Sites in the Resource Study Area for the B-P Build Alternatives

Figure 3.10-A-1 Map ID No.	Facility Name	Site Address	Contaminants of Concern/ Lead Agency/ Environmental Issues	EDR Database Listings	Alternative or Maintenance Facility RSA	Ranking Notes
High-Ranked PEC Sites						
E101	BP West Coast Products, LLC 05686/ ARCO AM PM Facility/ Prestige Stations Inc. #5345/ Dave's Investment, Inc./ ARCO Products #05686/ Circle K Stores Inc. #1355	111 West Avenue K, Lancaster, CA 92806	Gasoline; release reported September 19, 2001 and case closed November 4, 2003; Los Angeles County; release of approximately 10 gallons of gasoline to soil due to a customer driving away before removing the pump nozzle.	RGA LUST (closed); HAZNET; UST; CHMIRS; RCRA-SQG; FINDS; CA FID UST; SWEEPS UST; Los Angeles HMS; ERNS; EDR US Hist Auto Stat; HIST UST	1, 2, 3, 5	High: this is a closed LUST site with residual contamination which will be encountered in the project footprint.
E102	Lancaster Rentals, Inc./ United Rentals Inc. #561	43631 Sierra Highway, Lancaster, CA 93534	Waste oil / motor / hydraulic / lubricating; LUST case opened in 1990 and closed in 1998; Los Angeles County; unspecified media affected.	HAZNET; NPDES; HIST CORTESE; LUST (closed); CA FID UST; HIST UST; SWEEPS UST; LOS ANGELES COUNTY HMS	1, 2, 3, 5	High: this is a closed LUST site with residual contamination which will be encountered in the project footprint.
E113	AV Ready Mix/ Royal Luu & Thuy Nguyen/ Chotto Kaur et al.	42201 Division Street, Lancaster, CA 93534	Waste/motor/hydraulic/lubricating oil; LUST case opened in 1990 and closed in 1994; Los Angeles County; oil contamination to site soil.	HIST CORTESE; LUST (closed); LOS ANGELES COUNTY HMS; SWEEPS UST; EMI; HIST UST	1, 2, 3, 5, Avenue M LMF/MOWF site	High: this is a closed LUST site with residual contamination which will be encountered in the project footprint.
E116	ARCO Products/ Gaur Enterprise, Inc./ BP West Coast Products, LLC/ ARCO #05579	41923 Sierra Hwy, Palmdale, CA 93550	Gasoline; LUST case opened in January 2003 and closed in January 2007; Los Angeles County; gasoline contamination to site soil, contaminated soil reported to have been excavated.	UST; HAZNET; LUST (closed); LOS ANGELES COUNTY HMS; RCRA-SQG; FINDS; SWEEPS UST; HAZNET	1, 2, 3, 5, Avenue M LMF/MOWF site	High: this is a closed LUST site with residual contamination which will be encountered in the project footprint.

Figure 3.10-A-1 Map ID No.	Facility Name	Site Address	Contaminants of Concern/ Lead Agency/ Environmental Issues	EDR Database Listings	Alternative or Maintenance Facility RSA	Ranking Notes
E121a	Cal-Portland Cement-Sun/ Mojave CA/ Praxair Inc./ Mojave Ready Mix Plant/ Southern California Edison-Cal Cement Substation/ Mojave Quarry	9350 Oak Creek Road, Mojave, CA 93501	Three reported release incidents: 1) petroleum; employee reported oil on surface of ground in 1995, unknown cause; suspect underground oil line; 2) 200 gallons of diesel released to concrete and soil during re-fueling reported in 2001; release was reportedly contained and no waterways were impacted; 3) 100 gallons of fuel oil from leak in pipeline in 2003; the area was bermed; one 58,325-gallon AST; listed as a historical waste transfer facility and case open as of 1965.	WMUDS/SWAT; HAZNET; RGA LF; UST; NPDES; UST; CHMIRS; TSCA; ICIS; AST; TRIS; FINDS; ECHO; WDS; LDS; ENF; EMI; WMUDS/SWAT; US MINES; CA FID UST; SWEEPS UST	1, 2, 3, 5	High: this is an open release case site with contamination which will be encountered in the project footprint. It should be noted that this site is located in the project footprint where tunneling is proposed. This is also a small quantity hazardous material release site that was immediately cleaned up, an AST/UST site, a MINES facility, and a large industrial operation including a quarry, cement manufacturing, and a historical waste transfer facility.

Figure 3.10-A-1 Map ID No.	Facility Name	Site Address	Contaminants of Concern/ Lead Agency/ Environmental Issues	EDR Database Listings	Alternative or Maintenance Facility RSA	Ranking Notes
E121b	Cal-Portland Cement-Sun/ Mojave CA/ Praxair Inc./ Mojave Ready Mix Plant/ Southern California Edison-Cal Cement Substation/ Mojave Quarry	9350 Oak Creek Road, Mojave, CA 93501	Three reported release incidents: 1) petroleum; employee reported oil on surface of ground in 1995, unknown cause; suspect underground oil line; 2) 200 gallons of diesel released to concrete and soil during re-fueling reported in 2001; release was reportedly contained and no waterways were impacted; 3) 100 gallons of fuel oil from leak in pipeline in 2003; the area was bermed; one 58,325-gallon AST; listed as a historical waste transfer facility and case open as of 1965.	WMUDS/SWAT; HAZNET; RGA LF; UST; NPDES; UST; CHMIRS; TSCA; ICIS; AST; TRIS; FINDS; ECHO; WDS; LDS; ENF; EMI; WMUDS/SWAT; US MINES; CA FID UST; SWEEPS UST	1, 2, 3, 5	High: this is an open release case site with contamination which will be encountered in the project footprint. It should be noted that this site is located in the project footprint where tunneling is proposed. This is also a small quantity hazardous material release site that was immediately cleaned up, an AST/UST site, a MINES facility, and a large industrial operation including a quarry, cement manufacturing, and a historical waste transfer facility.
E129	Johnson Farms	Off Edison Road and SR 58, Edison, CA	25 barrels (bbl) of crude oil released to land when a valve was opened on February 19, 1990 in T30 R29E S3.	ERNS	1, 2, 3, 5	High: this is a release site that will be encountered in the project footprint. It should be noted that this is a relatively small quantity of hazardous materials that was immediately cleaned up, but the specific location is unknown.

Figure 3.10-A-1 Map ID No.	Facility Name	Site Address	Contaminants of Concern/ Lead Agency/ Environmental Issues	EDR Database Listings	Alternative or Maintenance Facility RSA	Ranking Notes
E132	Loop Ranch LLC, Loop Ranch Limestone Quarry	21812 and 22450 Broome Road, Keene, CA	This site is a former mercury mine. According to EnviroStor, the potential contaminant of concern was mercury in soil. Based on review of the Addendum to the Preliminary Site Assessment Report for the Loop Ranch Cinnabar Mine Tailings, prepared by Central Sierra Environmental and dated January 18, 2008, mercury was detected in soils less than 30 feet below grade. None of the mercury detected exceeded the USEPA total or leachable mercury limits, the California soluble mercury limit, or the mercury preliminary remediation goals for an industrial site. Excavation was recommended, but was not reported as having occurred. As of November of 2010, no further action was required by DTSC.	NPDES, HAZNET	1, 2, 3, 5, CCNM Design Option, Refined CCNM Design Option	High: this is a known release site with residual mercury contamination/tailings which will be encountered in the project footprint.
E15	WM Bolthouse Farms	7200 Brundage Lane, Bakersfield, CA 93307	Diesel; diesel LUST case opened in September 1992 and case closed/No Further Action letter dated May 1993; Kern County; soil affected; unspecified organic liquid mixture, unspecified solvent mixture, waste oil and mixed oil; diesel, gasoline; tank bottom waste.	HAZNET; UST; HIST UST; RMP; TRIS; AST; WDS; HAULERS; EM; NPDES; CA FID UST; SWEEPS UST; HIST CORTESE; LUST (closed); CHMIRS; ENF	1, 2, 3, 5	High: this is a closed LUST site and an RMP (extremely hazardous material storage) site with residual contamination which will be encountered in the project footprint.

Figure 3.10-A-1 Map ID No.	Facility Name	Site Address	Contaminants of Concern/ Lead Agency/ Environmental Issues	EDR Database Listings	Alternative or Maintenance Facility RSA	Ranking Notes
E179	Antelope Valley F.D. Dispatch/ Fire Station #129	421 E Avenue M, Lancaster, CA	Two diesel USTs; no reported releases; 1,000-gallon and 1,500-gallon USTs; solvent or non-petroleum hydrocarbon release to soil occurred on May 7, 1996; case was closed by the Lahontan RWQCB (Region 6V) on March 21, 2000.	HIST UST/HIST CORTESE, LUST/SWEEPS UST	1, 2, 3, 5	High: this is a closed LUST site with residual contamination which will be encountered in the project footprint.
E187	Monahans Electric	45318 N Sierra Hwy., Lancaster, CA 93534	Closed leaking underground storage tank site; Opened case in 1990, closed in 2009	LUST; LOS ANGELES CO. HMS; EDR Historic Auto Station	1, 2, 3, 5	High: this is a closed LUST site with residual contamination which will be encountered in the project footprint.
E2	Shoemaker Property Serve Station/ Shoemaker Hubert/ Shoemaker Property/ Shoemaker Harold	3629 Edison Hwy, Bakersfield, CA 93307	Gasoline; LUST case opened on October 12, 1992 and closed in April 13, 1993; Kern County Environmental Health; potential aquifer contamination.	SWEEPS UST; RGA LUST; HIST UST; EDR Historical Auto Station; CA FID UST; UST; HIST CORTESE; LUST (closed); FINDS	1, 2, 3, 5	High: this is a closed LUST site with residual contamination which will be encountered in the project footprint.
E211	Walsma Oil Inc., Unocal 76 Bulk Plant #300345, Union Oil Service Station #034, Tosco/Unocal Bulk Plant #345,	44141 Yucca Ave, Lancaster, CA 93534	LUST listing; at least six former USTs with 10,000-20,000 gallon capacity; LUST case opened on June 21, 1995, closed by the Lahontan RWQCB (Region 6T) on January 30, 2012; CHMIRS - possible inventory shortage of 680 gallons discovered when the tank was measured with a stick	UST, SWEEPS UST, HAZNET, HIST UST, Los Angeles Co. HMS, LUST, EMI, FINDS, CHMIRS	1, 2, 3, 5	High: this is a closed LUST site with residual contamination which will be encountered in the project footprint.
E26	Pacific Irrigation, Inc.	11845 School Street, Edison, CA 93220	Gasoline; gasoline LUST case opened on January 4, 1990 and closed on August 17, 1990; Kern County Environmental Health; gasoline impact to site soil.	HIST CORTESE; LUST (closed); HIST UST; UST; FINDS: EMI	1, 2, 3, 5	High: this is a closed LUST site with residual contamination which will be encountered in the project footprint.

Figure 3.10-A-1 Map ID No.	Facility Name	Site Address	Contaminants of Concern/ Lead Agency/ Environmental Issues	EDR Database Listings	Alternative or Maintenance Facility RSA	Ranking Notes
E29	Giumarra Farms, Inc./ Giumarra Vineyards Corp./ FMC Corp.	12481 Edison Hwy, Bakersfield, CA 93307	Off-specification, aged or surplus organics; gasoline; LUST case opened in September 1988 and closed in February 1998; Kern County Environmental Health; gasoline contamination to site soil.	HIST CORTESE, LUST (closed); HAZNET; FINDS; EMI	1, 2, 3, 5	High: this is a large agricultural facility and a closed LUST site with residual contamination which will be encountered in the project footprint.
E31	Edison Jr. High School	721 South Edison Road, Bakersfield, CA 93307	Gasoline; LUST case opened in December 1987 and closed in December 1988; Kern County Environmental Health; gasoline contamination to site soil.	LUST (closed)	1, 3, 5	High: this is a closed LUST site with residual contamination which will be encountered in the project footprint.
E4	The Train Stop (Edison Construction Co)	3931 Edison Hwy, Bakersfield, CA 93301	Gasoline, diesel, unspecified oil-containing waste; LUST case opened on January 4, 1995 and closed on June 6, 1995; Kern County Environmental Health; diesel contamination to site soil.	SWEEPS UST; UST; CA FID UST; HIST CORTESE; LUST (closed); HAZNET	1, 2, 3, 5	High: this is a closed LUST site with residual contamination which will be encountered in the project footprint.

Figure 3.10-A-1 Map ID No.	Facility Name	Site Address	Contaminants of Concern/ Lead Agency/ Environmental Issues	EDR Database Listings	Alternative or Maintenance Facility RSA	Ranking Notes
E46	City of Lancaster Maintenance Center	46008 7th Street West/615 W Avenue H, Lancaster, CA 93534	Aged or surplus organics, organic solids, pesticides, inorganic solid waste, aqueous solution, organic liquid mixture, solvent mixture, liquids with pH <=2, inorganic solids, latex waste, waste oil and mixed oil, oxygenated solvents, oil-containing waste, tank bottom waste, sludge waste, aged or surplus inorganics, liquids with halogenated organic compounds, oil/water separation sludge, petroleum hydrocarbons from fuel; LUST case opened in 2003 and eligible for closure as of 2014; SWRCB, Lahontan RWQCB, Los Angeles County; petroleum hydrocarbon-impacted soil at 3 feet bgs.	LUST (open); LOS ANGELES COUNTY HMS; HAZNET; FINDS; UST; EMI; SWF/LF, CRA-SQG; SWEEPS UST	1, 2, 3, 5	High: this is a closed LUST site with residual contamination which will be encountered in the project footprint.
E51	City of Lancaster	45417 Sierra Hwy, Lancaster, CA 93534	Ethylbenzene, toluene, total petroleum hydrocarbons, xylene, tank bottom waste; LUST case opened in November 2009 and eligible for closure as of August 2014; SWRCB, Lahontan RWQCB, Los Angeles County; residual total petroleum hydrocarbon contamination to site soil.	LOS ANGELES COUNTY HMS; LUST (open); HAZNET	1, 2, 3, 5	High: this is a closed LUST site with residual contamination which will be encountered in the project footprint.

Figure 3.10-A-1 Map ID No.	Facility Name	Site Address	Contaminants of Concern/ Lead Agency/ Environmental Issues	EDR Database Listings	Alternative or Maintenance Facility RSA	Ranking Notes
E52	Bills Antelope Automotive & Smog Check/ Lancaster Ford Co./ Clymore Investments Co./ Lancaster Jeep Renault/ A.P.A Auto Pros Inc./ Lancaster Ford Lincoln-Mercury/ Clymore Investments Co.	44606 & 44614 Sierra Hwy, Lancaster, CA 93534	Two LUST cases; 1) Waste/motor/hydraulic/lubricating oil; LUST case opened in 1991 and closed in 1994; Los Angeles County, Lahontan RWQCB; oil contamination to unspecified media; 2. Waste/motor/hydraulic/lubricating oil; LUST case opened in 1991 and closed in 1992; Los Angeles County, Lahontan RWQCB; oil contamination to soil.	EDR Historical Auto Station; HIST CORTESE; LUST (closed); LOS ANGELES COUNTY HMS; RCRA-SQG; FINDS; HAZNET; HIST UST; CA FID UST; SWEEPS UST; EMI; LUST, EDR US Hist Auto Stat	1, 2, 3, 5	High: this is a closed LUST site with residual contamination which will be encountered in the project footprint.
E53	The Dairy	44419 N Division Street, Lancaster, CA 93534	Unspecified contaminant; leak reported on December 22, 1993 and case closed on March 25, 1996; Lahontan RWQCB; release of unspecified contaminant to soil.	HIST CORTESE; LUST (closed); UST; HIST UST; LOS ANGELES COUNTY HMS; CA FID UST; SWEEPS UST; HAZNET	1, 2, 3, 5	High: this is a closed LUST site with residual contamination which will be encountered in the project footprint.
E57/ S57	Lancaster 76/ Antico, Peter/ Haddad Mobil/ H-Petro/ Haddad Shell Smog & Auto Repair/ Haddad Mobil Service Station/ Mini Mart/ Lancaster Former Mobil/ City of Lancaster/ J Petro	505 W Avenue J, Lancaster, CA 93534	Waste oil and mixed oil, aqueous solution, solvent mixture, gasoline; two LUST cases: 1) reported in 1990 and closed in 2015, gasoline/diesel contamination to site soil and aquifer used for drinking water supply, 2) opened in 1997 and open for site assessment as of 2008; Lahontan RWQCB, Los Angeles County; gasoline contamination to groundwater.	FINDS; HAZNET; RGA LUST (open); LOS ANGELES COUNTY HMS; EDR Historical Auto Station; UST; HIST CORTESE; LUST; SWEEPS UST; ERNS; CHMIRS	1, 2, 3, 5	High: this is a closed LUST site with residual contamination which will be encountered in the project footprint.
E58	Smith & Thompson Waste Transfer Facility	244 to 258 W Avenue L-9, Lancaster, CA 93534	Unspecified contaminants; cleanup status open as of January 1965; Lahontan RWQCB; unspecified, contamination to unspecified media. USEPA website indicated no further action.	LDS	1, 2, 3, 5	High: this is a release site with residual contamination which will be encountered in the project footprint.

Figure 3.10-A-1 Map ID No.	Facility Name	Site Address	Contaminants of Concern/ Lead Agency/ Environmental Issues	EDR Database Listings	Alternative or Maintenance Facility RSA	Ranking Notes
E72/S20	City of Lancaster/LA County Sheriff – Lancaster Station	44907 Sierra Hwy Lancaster, Portion of 501 W Lancaster Blvd (former 48-50 10th St), CA 93534	LA Co. Site Mitigation listing; 1918 SM - Oil storage in north portion of parcel; asbestos-containing waste; oil-containing waste; contaminated soil from site clean-up; alkaline solution without metals.	LA Co. Site Mitigation; HAZNET; LOS ANGELES CO. HMS	1, 2, 3, 5	High: this is a closed LA Co. Site Mitigation listing with residual contamination which will be encountered in the project footprint.
E74	AV Custom Plating/ Lancaster Moving & Storage	44813 Yucca Avenue, Lancaster, CA 93534	Gasoline; LUST case opened in October 1989 and closed in May 1990; Los Angeles County, Lahontan RWQCB; unspecified media affected.	LUST (closed); LOS ANGELES COUNTY HMS; EMI; HIST CORTESE	1, 2, 3	High: this is a closed LUST site with residual contamination which will be encountered in the project footprint.
E76/ S1/ S39	City of Lancaster	44801 Sierra Hwy (formerly 1136 Antelope), Lancaster, CA 93534	1918 SM, 1923 SM - Pumps Machinery & Agricultural Implements Warehouse; 1927 SM - Well Casing Manufacturing; 1934 SM - Pumps & Well Casings; not reported; LUST case opened in 2006 and open for closure as of July 2016; Lahontan RWQCB, Los Angeles County, SWRCB; reported total petroleum hydrocarbons-impacted soil onsite, remediation needed.	LUST (open); LOS ANGELES COUNTY HMS	1, 2, 3, 5	High: this is an open LUST site with contamination which will be encountered in the project footprint.
E78	Hunter Dodge Plymouth/ HW Hunter, Inc./ Five Star Auto Body/ HW Hunter Chrysler/ Plymouth/ HW Hunter Dodge/ Chrysler/ HW Hunter OMC/ Chrysler/ City of Lancaster	44733 Sierra Hwy, Lancaster, CA 93534	Waste/ motor/ hydraulic/ lubricating oil, organic solids, oil/water separation sludge; LUST case opened in August 1990 and closed in May 1993; Los Angeles County, Lahontan RWQCB; waste/ motor/ hydraulic/ lubricating oil contamination to site soil.	HIST CORTESE; RCRA-SQG; FINDS; LUST (closed); HIST UST; HAZNET; LOS ANGELES COUNTY HMS; EMI; EDR Historical Auto Station	1, 2, 3, 5	High: this is a closed LUST site with residual contamination which will be encountered in the project footprint.

Figure 3.10-A-1 Map ID No.	Facility Name	Site Address	Contaminants of Concern/ Lead Agency/ Environmental Issues	EDR Database Listings	Alternative or Maintenance Facility RSA	Ranking Notes
E83	Tim Wells Tire Service	45257 Sierra Hwy, Lancaster, CA 93534	No information available.	EDR US Hist Auto Stat; LUST	1, 2, 3, 5	High: this is a LUST site with contamination which will be encountered in the project footprint.
E84	LACDPW – Site01/ LA Co. Public Works Department/ Los Angeles County Department of Public Works/ LA CO DPW WW Lancaster Yard/ LACO DPW- Waterworks & Sewer Maintenance	419 W Avenue J, Lancaster, CA 93535	Chlorine, waste oil and mixed oil, alkaline solution without metals, aged or surplus organics, pesticides and other waste associated with pesticide production, solvent mixture, oil-containing waste, alkaline solution, aged or surplus inorganics, liquids with pH<=2, organic solids, inorganic solid waste, gasoline; LUST case opened and closed in April 2001; Los Angeles County, Lahontan RWQCB; gasoline contamination to site soil.	RMP; EMI; FINDS; HAZNET; UST; LOS ANGELES COUNTY HMS; HIST UST; SWEEPS UST; RGA LUST; HIST CORTESE; LUST (closed)	1, 2, 3, 5	High: this is a closed LUST site and an RMP (extremely hazardous material storage) site with residual contamination which will be encountered in the project footprint.
E88	44125 Yucca LLC/ My Mechanic Auto Center/ Little Oil Co	44125 Yucca Avenue, Lancaster, CA 93534	Gasoline, diesel, inorganic solid waste, tank bottom waste, organic solids, waste oil and mixed oil; LUST case opened in May 2006 and closed in April 2011; Lahontan RWQCB, Los Angeles County; gasoline, diesel contamination to site soil.	LOS ANGELES COUNTY HMS; EDR Historical Auto Station; LUST (closed); CA FID UST; SWEEPS UST; UST; HIST UST	1, 2, 3, 5	High: this is a closed LUST site with residual contamination which will be encountered in the project footprint.

Figure 3.10-A-1 Map ID No.	Facility Name	Site Address	Contaminants of Concern/ Lead Agency/ Environmental Issues	EDR Database Listings	Alternative or Maintenance Facility RSA	Ranking Notes
E9	Hwy 58 Fuel Stop (Texaco)/ Clark's Coffee Shop and Mini Mart/ JOBRN Inc./ Bloomquist-May Inc.	8101 Edison Hwy, Bakersfield, CA 93307	Gasoline, diesel LUST case opened on October 23, 1996 and closed on January 6, 1997; Kern County Environmental Health; gasoline, diesel-contaminated soil.	RGA LUST; UST; SWEEPS UST; FINDS; LUST (closed); EMI; EDR Historical Auto Station; HIST CORTESE; CA FID UST; HIST UST	1, 2, 3, 5	High: this is a closed LUST site and an RMP (extremely hazardous material storage) site with residual contamination which will be encountered in the project footprint.
E99	Antelope Valley Distribution	43851 Division Street, Lancaster, CA 93535	Gasoline; LUST case opened in September 2003 and closed in April 2007; Los Angeles RWQCB, Los Angeles County; gasoline contamination to site soil.	SWEEPS UST; LUST (closed); UST; LOS ANGELES COUNTY HMS	1, 2, 3, 5	High: this is a closed LUST site with residual contamination which will be encountered in the project footprint.
E1	Jim's Radiator	3215 Edison Hwy, Bakersfield, CA 93307	Gasoline; LUST case opened on February 19, 1991 and closed on June 8, 1994; Kern County Environmental Health; gasoline contamination to soil.	RGA LUST; HIST CORTESE; LUST (closed); UST	1, 2, 3, 5	High: this is a closed LUST site with residual contamination which will be encountered in the project footprint.
E109	Ralph Miller Property/ Professional Pipeline	42851 Sierra Hwy, Lancaster, CA 93535	Gasoline, waste oil and mixed oil; LUST case opened in October 1995 and closed in August 1996; Los Angeles County; gasoline contamination to site soil.	HIST CORTESE; LUST (closed); HAZNET	1, 2, 3, 5	High: this is a closed LUST site with residual contamination which will be encountered in the project footprint.
E11	Cauzza Property/ Vacant Land	Brundage and Edison Hwy, Bakersfield, CA 93307	Diesel LUST case opened in 1990 and closed in 1993; Kern County Environmental Health; affected media unreported.	HIST CORTESE; LUST (closed); UST	1, 2, 3, 5	High: this is a closed LUST site with residual contamination which will be encountered in the project footprint.

Figure 3.10-A-1 Map ID No.	Facility Name	Site Address	Contaminants of Concern/ Lead Agency/ Environmental Issues	EDR Database Listings	Alternative or Maintenance Facility RSA	Ranking Notes
E110	Lancaster Center/ United Parcel Service	290 W Avenue L, Lancaster, CA 93534	Diesel; release reported April 19, 2010 and closed April 28, 2011; Los Angeles County; release of diesel to site soil; multiple CHMIRS incidents.	HMIRS; HIST UST; RGA LUST (closed); HAZNET; FINDS; NPDES; WDS; CA FID UST; SWEEPS UST; Los Angeles Co HMS	1, 2, 3, 5	High: this is a closed LUST site with residual contamination which will be encountered in the project footprint.
E186	Jacobs Oil Company Inc./ Cedar-J Carwash	560 W Avenue J, Lancaster, CA	UST listing; unreported release occurred on April 29, 2014; case closed by Lahontan RWQCB (Region 6T) on January 12, 2015.	LUST, HIST UST, UST, LOS ANGELES COUNTY HMS, SWEEPS UST	1, 2, 3, 5	High: this is a closed LUST site with residual contamination which will be encountered in the project footprint.
E61	Chevron USA Inc. Lancaster Bulk Plant/ Bulk Fuel Facility #1001488	45218 Sierra Hwy, Lancaster, CA 93534	Gasoline; LUST case opened in 1996 and closed in 2009; Lahontan RWQCB, Los Angeles County; gasoline contamination to soil and groundwater.	RCRA-NonGen/NLR; FINDS; LOS ANGELES COUNTY HMS; LUST (closed)	1, 2, 3, 5	High: this is a closed LUST site with residual contamination which will be encountered in the project footprint.
E65	Former Everest Economy Gas/ Gill & Sons, Inc./ Alisa & Sergio Blanco	610 Avenue I West, Lancaster, CA 93534	Gasoline; LUST case opened on December 12, 1997 and closed December 12, 2015; Lahontan RWQCB (Region 6T); gasoline-impacted groundwater.	RGA LUST (closed); EDR Historical Auto Station; HIST UST; CA FID UST; SWEEPS UST; LOS ANGELES COUNTY HMS; HIST CORTESE; LUST (closed); HAZNET	1, 2, 3, 5	High: this is a closed LUST site with residual contamination which will be encountered in the project footprint.
E7	Unico Chemicals Inc./ Martin Properties/ Nate Bozarth Enterprises	7101 Edison Hwy, Bakersfield, CA 93307	Lead, solvents, waste oil; LUST case opened on December 17, 1991 and closed on January 4, 1993; Kern County Environmental Health; lead contamination to soil.	HIST UST, FINDS, RGA LUST, HAZNET, HIST CORTESE, LUST (closed), CA FID UST, SWEEPS UST	1, 2, 3, 5	High: this is a closed LUST site with residual contamination which will be encountered in the project footprint.

Figure 3.10-A-1 Map ID No.	Facility Name	Site Address	Contaminants of Concern/ Lead Agency/ Environmental Issues	EDR Database Listings	Alternative or Maintenance Facility RSA	Ranking Notes
E71	Southern Pacific Trans. Co./ Mobil Oil Corp.	44922 Sierra Hwy, Lancaster, CA 93534	Gasoline; LUST case opened in 1998; Los Angeles County; gasoline contamination to site soil.	HIST CORTESE; LUST (open); LOS ANGELES COUNTY HMS	1, 2, 3, 5	High: this is an open LUST site with contamination which will be encountered in the project footprint.
E73	Unocal Corp #0773/ Unocal Station #0773/ City of Lancaster/ Former Unocal Station #0773	44856 Sierra Hwy, Lancaster, CA 93534	Gasoline, waste oil and mixed oil; waste/motor/hydraulic/lubricating oil; two LUST cases 1) opened in April 1997 and closed in January 2005; Lahontan RWQCB, Los Angeles County; non-drinking water groundwater contaminated with gasoline and 2) opened in July 1995 and closed in January 2005; Los Angeles County, Lahontan RWQCB; waste/motor/hydraulic/lubricating oil contamination to site soil.	LOS ANGELES COUNTY HMS; HIST CORTESE; LUST (closed); HAZNET; RGA LUST	1, 2, 3, 5	High: this is a closed LUST site with residual contamination which will be encountered in the project footprint.
E77	City of Lancaster	540 W Avenue J, Lancaster, CA	Diesel, gasoline, waste oil/motor/hydraulic/lubricating; LUST case opened 10/4/2006 and closed 2/19/2008; Los Angeles County; Tank Closure Report summarizes three 10,000-gallon gasoline USTs were removed; reportedly, total petroleum hydrocarbons (diesel and gasoline) remain in soil.	LUST (closed)	1, 2, 3, 5	High: this is a closed LUST site with residual contamination which will be encountered in the project footprint.
E80	Unknown	44633 Sierra Hwy, Lancaster, CA 93534	Gasoline; LUST case opened in October 1991 and closed in May 1993; Los Angeles County, Lahontan RWQCB; unspecified media affected.	HIST CORTESE; LUST (closed)	1, 2, 3, 5	High: this is a closed LUST site with residual contamination which will be encountered in the project footprint.

Figure 3.10-A-1 Map ID No.	Facility Name	Site Address	Contaminants of Concern/ Lead Agency/ Environmental Issues	EDR Database Listings	Alternative or Maintenance Facility RSA	Ranking Notes
E81	Henry Walsma	44354 Sierra Hwy, Lancaster, CA	Gasoline; LUST case opened November 3, 1990 and closed March 30, 1995; Los Angeles County; case closure summary indicates that vapor extraction was operated from July to September 1993 and October to December 1993; some contaminated soil remained 10 to 40 feet below grade and is now capped with asphalt underneath Sierra Highway.	HIST CORTESE; LUST (closed)	1, 2, 3, 5	High: this is a closed LUST site with residual contamination which will be encountered in the project footprint.
E82	Gorrindo Texaco/ Robert Gorrindo/ Western Serve-Ur-Self Station/ Jacobs Oil Co	44339 Sierra Hwy, Lancaster, CA 93534	Gasoline and diesel; LUST case opened February 16, 1993 and closed May 21, 2012; Lahontan RWQCB; case closure documents report contamination to soil only; soil vapor extraction operated from August 1996 through July 2005; residual petroleum-impacted soil remains at the site below 20 feet below grade.	HIST CORTESE; LUST (closed); HAZNET; EDR US Hist Auto Stat; SWEEPS UST; LOS ANGELES COUNTY HMS	1, 2, 3, 5	High: this is a closed LUST site with residual contamination which will be encountered in the project footprint.
E85	Mobil Service Station #10-MMW/ Nabil H. Haddad #14-849-L/ Civic Center Texaco/ Green Solution Recycling/ Mobil Oil Corp/ Texaco Service Station/ Tony's Gas	44358 10th Street N, Lancaster, CA 93534	Gasoline; case opened on May 6, 1986 and closed on August 31, 1990; Los Angeles County; gasoline contamination to site soil.	HIST UST; RGA LUST (closed); SWEEPS UST; RCRA-SQG; FINDS; HAZNET; SWRCY; EDR US Hist Auto Stat; LOS ANGELES COUNTY HMS; UST	1, 2, 3, 5	High: this is a closed LUST site with residual contamination which will be encountered in the project footprint.

Figure 3.10-A-1 Map ID No.	Facility Name	Site Address	Contaminants of Concern/ Lead Agency/ Environmental Issues	EDR Database Listings	Alternative or Maintenance Facility RSA	Ranking Notes
E89	Caltrans Lancaster Maintenance LVTOP/ Maintenance Station/ Caltrans District 7	44023 N Sierra Hwy, Lancaster, CA 93534	Gasoline, diesel; two closed LUST cases 1) opened in March 1989 and closed in December 1997; Lahontan RWQCB, Los Angeles County; gasoline contamination to site soil 2) opened in March 2000 and closed in January 2015; Lahontan RWQCB, SWRCB, Los Angeles County; minor petroleum hydrocarbon contamination to site soil.	AST; SWF/LF; HIST UST; HAZNET; HIST CORTESE; LUST (closed); FINDS; SWEEPS UST; LOS ANGELES COUNTY HMS; RGA LUST; RGA LF; RCRA-SQG	1, 2, 3, 5	High: this is a closed LUST site with residual contamination which will be encountered in the project footprint.
E90	7-Eleven Store 17837/ 7-11 #17837/ Southland Corp SS 17837/ 7-11 #17837	44011 Sierra Hwy, Lancaster, CA 93534	Asbestos-containing waste, gasoline; LUST case opened in October 1991 and closed in June 1994; Los Angeles County, Lahontan RWQCB; gasoline contamination to site soil.	HIST CORTESE; LUST (closed); HIST UST; HAZNET; RGA LUST; CA FID UST; SWEEPS UST	1, 2, 3, 5	High: this is a closed LUST site with residual contamination which will be encountered in the project footprint.
E98	Butler Scales/ Desert Mine Industries	43857-43859 Sierra Hwy, Lancaster, CA 93534	Gasoline, diesel, organic solids, sludge waste; LUST case opened in February 1999 and closed in January 2012; Lahontan RWQCB, Los Angeles County; residual gasoline and diesel contamination to soil.	UST; HAZNET; LOS ANGELES COUNTY HMS; CA FID UST; SWEEPS UST; LUST (closed); RGA LUST; HIST UST	1, 2, 3, 5	High: this is a closed LUST site with residual contamination which will be encountered in the project footprint.
E177	Standard Auto Service/ Chevron Station #9-7932	100 E Avenue J, Lancaster, CA 93534	HIST UST; up to four USTs, 1,000 to 10,000 gallons; release of gasoline to groundwater occurred on 1/13/1992; case closed by the Lahontan RWQCB (Region 6V) on October 8, 2002.	HIST UST, US Hist Auto Stat, SWEEPS UST, LOS ANGELES COUNTY HMS, HAZNET, RGA LUST, LUST, HIST CORTESE, FINDS	1, 2, 3, 5	High: this is a closed LUST site with contamination remaining in place, which is located in the project footprint.

Figure 3.10-A-1 Map ID No.	Facility Name	Site Address	Contaminants of Concern/ Lead Agency/ Environmental Issues	EDR Database Listings	Alternative or Maintenance Facility RSA	Ranking Notes
E191	Ray's Chevron/ Mobil Mini Mart	101 E Avenue J, Lancaster, CA	UST listing; up to three tanks, unreported capacity; release of methyl tertiary-butyl ether / TBA / other fuel oxygenates, gasoline to groundwater on January 1, 1996; case open as of January 29, 2015 with Lahontan RWQCB (Region 6T) as the lead agency.	SWEEPS UST, LOS ANGELES COUNTY HMS	1, 2, 3, 5	High: this is an open UST release site with contamination, and which will be encountered in the project footprint.
Moderate-Ranked PEC Sites						
E79	Watson's Foreign Body & Paint/ MP Auto & Smog/ WB Carter & DL Carter Trust/ Industrial Radiator & Muffler/ MPS Auto/ Antelope Valley Bus High Desert Automotive Center	44706 Yucca Avenue, Lancaster, CA 93534	Solvent mixture, hydrocarbon solvents, organic liquid mixture, contaminated soil from clean-up, oil/water separation sludge, non-petroleum hydrocarbon; LUST case opened in May 1995 and closed in September 1997; Lahontan RWQCB, Los Angeles County; solvent or non-petroleum hydrocarbon contamination to site soil.	HAZNET; EMI; SWEEPS UST; LOS ANGELES COUNTY HMS; EDR Historical Auto Station; HIST CORTESE; LUST (closed)	1, 2, 3	Moderate: this is a closed LUST site with residual contamination which is located in the buffer, and is not expected to be encountered in the project footprint.
E111	Nu Ease Inc.	42644 Valley Line Road, Lancaster, CA 93535	Unspecified contaminants; Los Angeles County; release of unspecified contaminants to soil reported and case granted closure 2/13/1990.	HAZNET; LUST; HIST CORTESE; HIST UST; RCRA-LQG; LUST (closed); CA FID UST, SWEEPS UST, LOS ANGELES COUNTY HMS	1, 2, 3, 5	Moderate: this is a closed LUST site with residual contamination which is located in the buffer, and is not expected to be encountered in the project footprint.
E114	Gary Inglett/ Unknown	42142 Valley Line Road, Lancaster, CA 93535	Unknown contaminants; LUST case, opened and closed in March 1990; Los Angeles County; unknown contamination to soil.	LOS ANGELES COUNTY HMS; HIST CORTESE; LUST (closed); SWEEPS UST	1, 2, 3, 5	Moderate: this is a closed LUST site with residual contamination and is not expected to be encountered in the project footprint.

Figure 3.10-A-1 Map ID No.	Facility Name	Site Address	Contaminants of Concern/ Lead Agency/ Environmental Issues	EDR Database Listings	Alternative or Maintenance Facility RSA	Ranking Notes
E117d	Lockheed Plant 10, Building 603	1011 Lockheed Way, Palmdale, CA 93550	Release of diesel to soil reported at Plant 10, Building 603, on March 10, 1993; case granted closure October 7, 2010; closure letter on GeoTracker indicates low detections of total petroleum hydrocarbons diesel and benzene, toluene, ethylbenzene, and xylene compounds; no threat to groundwater is expected and therefore closure was granted; RWQCB Case # 6B1900672T	RGA LUST (closed)	1, 2, 3, 5	Moderate: this is a closed LUST site with residual contamination which is located in the buffer, and is not expected to be encountered in the project footprint.
E117e	Lockheed Martin Skunk Works	1011 Lockheed Way, Palmdale, CA 93550	Release of aviation fuel to soil reported at the Skunk Works facility on January 22, 1997; case granted closure August 28, 2013; No Further Action letter indicates removal of 1,500 foot pipeline and multiple USTs discovered in 1997; remediation details were not included. RWQCB Case # 6B1900811T Local Agency Case # 6389-9791	RGA LUST (closed)	1, 2, 3, 5	Moderate: this is a closed LUST site with residual contamination which is located in the buffer, and is not expected to be encountered in the project footprint.
E117f	Lockheed Plant 10, Building 617	1011 Lockheed Way, Palmdale, CA 93550	Release of gasoline and diesel reported to soil at Plant 10 Building 617 on December 11, 2014; No Further Action letter provided November 12, 2015. RWQCB Case # 6B1920021T	RGA LUST (closed)	1, 2, 3, 5	Moderate: this is a closed LUST site with residual contamination which is located in the buffer, and is not expected to be encountered in the project footprint.

Figure 3.10-A-1 Map ID No.	Facility Name	Site Address	Contaminants of Concern/ Lead Agency/ Environmental Issues	EDR Database Listings	Alternative or Maintenance Facility RSA	Ranking Notes
E12	Fleet Card Exxon/ Chevron USA Inc/ Weedpatch Chevron Station #201238/ Bob Goodwin's Exxon	8100 Brundage Lane, Bakersfield, CA 93307	Diesel LUST case opened on June 14, 1990 and closed on August 8, 1990; Kern County Environmental Health; diesel-contaminated soil.	LUST (closed); HIST CORTESE; CA FID UST; SWEEPS UST; EMI; EDR US Historical Auto Station; UST; FINDS; Hist UST	1, 2, 3, 5	Moderate: this is a closed LUST site with residual contamination and is not expected to be encountered in the project footprint.
E131	Air Force Plant 42	US Airforce Installation Restoration Program (IRP) Site SS008 – Fuel Transfer Area, Air Force Plant 42, Palmdale	Soil impacted by total petroleum hydrocarbons, VOCs, & semivolatile organic compounds; groundwater has not been impacted (CH2MHill 2012); RWQCB Case #166-62—4; local agency case #19970004	ERNS, WMUDS/SWAT, MCS, CERCLIS, Hist UST, RGA LF	1, 2, 3, 5	Moderate: this is a release site with residual contamination which is located in the buffer, and is not expected to be encountered in the project footprint.
E140	Cactus Queen/Cactus Gold Mines/Middle Buttes Project	2025 E Financial Way and 8941 W Backus Road, Mojave, CA	Waste transfer with State oversight.	MINES, HAZNET, WMUDS/SWAT, LDS, ENF, WMUDS/SWAT, CERC-NFRAP, HAZNET	1, 2, 3, 5	Moderate: this is a known release site, waste transfer facility, land disposal site, and a MINES facility which is not expected to be encountered in the project footprint.
E140	Cactus Queen/ Cactus Gold Mines/ Middle Buttes Project	2025 E Financial Way and 8941 W Backus Road, Mojave, CA	Waste transfer with State oversight.	MINES, HAZNET, WMUDS/SWAT, LDS, ENF, WMUDS/SWAT, CERC-NFRAP, HAZNET	1, 2, 3, 5	Moderate: this is a known release site, waste transfer facility, land disposal site, and a MINES facility but is not expected to be encountered in the project footprint.

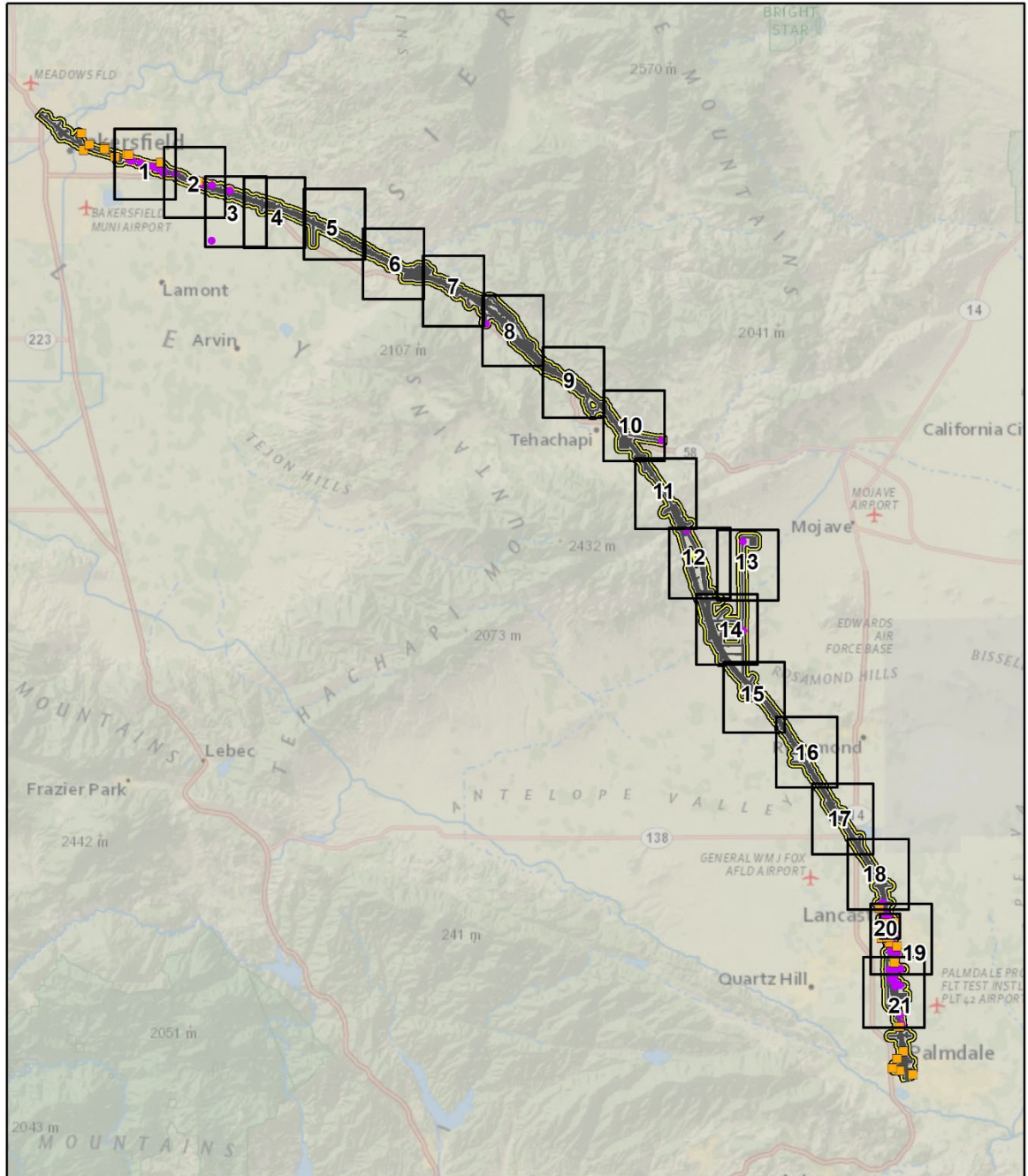
Figure 3.10-A-1 Map ID No.	Facility Name	Site Address	Contaminants of Concern/ Lead Agency/ Environmental Issues	EDR Database Listings	Alternative or Maintenance Facility RSA	Ranking Notes
E185	Acme Rentals	44110 Yucca Avenue, Lancaster, CA 93534	Release of kerosene to groundwater on September 8, 1996; case was closed by Lahontan RWQCB (Region 6V) on June 12, 2003.	LUST, HIST UST, HAZNET, EMI	1, 2, 3	Moderate: this is a closed LUST site which is located in the buffer and may have contamination, but is not expected to be encountered in the project footprint.
E189	WL Research	601 Oswell Street, Bakersfield, CA 93307	Gasoline; gasoline release to soil reported in 1988, case closed in 1994; Kern County	RGA LUST (closed); HAZNET; HIST CORTESE; SLIC (closed); UST	1, 2, 3, 5	Moderate: this is a closed LUST site with residual contamination which is located in the buffer, and is not expected to be encountered in the project footprint.
E198	W B Carter & D L Carter Trust/ Antelope Valley Bus Inc.	44706 Yucca Avenue, Lancaster, CA	UST listing	SWEEPS UST; LOS ANGELES COUNTY HMS; EDR US Historic Auto Station; HIST CORTESE; LUST	1, 2, 3	Moderate: this is a closed LUST site which is located in the buffer and may have contamination, but is not expected to be encountered in the project footprint.
E41	Lehigh Southwest Cement Company/ Calaveras Cement Co./ Monolith Limestone Quarry	13573 E Tehachapi Blvd, Tehachapi, CA 93561	Release of waste oil, motor /hydraulic/ lubricating oil; case opened in 2005 and closed in 2008; Kern Co. Environmental Health and Central Valley RWQCB; release of waste oil from a pipeline impacting unspecified media; closure letter reviewed on GeoTracker and No Further Action designation was recommended; LUST case opened in 2003 and eligible for closure as of 2014;	LUST (closed); ICIS; FINDS; NPDES; SWF/LF; WDS; WMUDS/SWAT; ENF; LDS; CHMIRS; SLIC (open); LUST; FINDS; UST; HAZNET; ERNS; CHMIRS; EMI; US MINES; CERC-NFRAP; ECHO; TRIS; TSCA; AST; US AIRS; SEMS-ARCHIVE	1, 2, 3, 5	Moderate: this is an open SLIC site and a closed LUST site which is located in the buffer and may have contamination, but is not expected to be encountered in the project footprint.

Figure 3.10-A-1 Map ID No.	Facility Name	Site Address	Contaminants of Concern/ Lead Agency/ Environmental Issues	EDR Database Listings	Alternative or Maintenance Facility RSA	Ranking Notes
			<p>SWRCB, Lahontan RWQCB, Los Angeles County; petroleum hydrocarbon-impacted soil at 3 ft. below grade; 2) SLIC case is a groundwater case; other contaminants include: Al, Cd, total Cr, Cu, Pb, Hg, Ni, Fe, and Mn; reported in 1997, no additional information available; 3) CHMIRS listing indicates that an AST was overfilled in 2001 and the spill was contained in a bermed area; 4) 50 gallons of diesel reported from a pinhole in an underground pipeline in 1997; 5) 50 gallons of diesel in 2003, material was reportedly contained; site listed as cleanup program site due to heavy metals reported in groundwater in 1980; site listed as open and inactive as of 2009; listed as open as of 1977; 37,690-gallon AST onsite; active limestone quarry; reclamation not started.</p> <p>Prior to 1980, waste kiln brick and other industrial refuse had been landfilled onsite (RWQCB 1989). Currently the landfill is capped and the property is used as a transfer storage facility where debris is staged for sorting and recycling (2012). The western limit of the capped landfill is located over 1 mile east of the alignment alternatives. The eastern limit of the capped landfill is located approximately 0.75 mile west of the</p>			

Figure 3.10-A-1 Map ID No.	Facility Name	Site Address	Contaminants of Concern/ Lead Agency/ Environmental Issues	EDR Database Listings	Alternative or Maintenance Facility RSA	Ranking Notes
			proposed electrical transmission line to Oak Creek Road.			
E54	Southern California Gas Company/ Lancaster District	44416 N Division Street, Lancaster, CA 93534	Gasoline; case opened on April 22, 2002 and closed on January 13, 2015; SWRCB; gasoline contamination to site soil; closure documents indicate groundwater likely not affected.	HIST UST; EMI; FINDS; UST; LUST (closed); SWEEPS UST; LOS ANGELES COUNTY HMS; HAZNET	1, 2, 3, 5	Moderate: this is a closed LUST site with residual contamination which is located in the buffer, and is not expected to be encountered in the project footprint.
E59	Petro-Lock, Inc.	45315 Trevor Avenue, Lancaster, CA 93539	Diesel, gasoline, waste oil; LUST case opened in 1998 and undergoing remediation as of 2011; Lahontan RWQCB; diesel and gasoline contamination to drinking water aquifer and gasoline contamination to soil only.	HIST UST; UST; RGA-SQG; FINDS; LUST (open); RGA LUST; CA FID UST; HIST UST; SWEEPS UST; SWEEPS UST; LOS ANGELES COUNTY HMS; EMI; HAZNET; EDR Historical Auto Station	1, 2, 3, 5	Moderate: this is an open LUST site with contamination and is not expected to be encountered in the project footprint
E63a	Mission Linen Supply/ Mission Uniform Service/ Mission Industries/ Fashion Dry Cleaners	44926 Yucca Avenue, Lancaster, CA 93535	Gasoline; LUST case, opened and closed in 1990; Los Angeles County; unspecified media affected; SLIC case opened in June 2011 and under assessment as of August 2011, after discovery of perchlorethylene and trichloroethylene in the site indoor air, soil vapor, and soil.	WIP; LOS ANGELES COUNTY HMS; CA FID UST; HIST UST; SWEEPS UST; HIST CORTESE; LUST; EDR Historical Cleaners; RGA LUST	1, 2, 3, 5	Moderate: this is an open SLIC site with residual contamination which is located in the buffer, and is not expected to be encountered in the project footprint.
E63b	Mission Linen Supply/ Mission Uniform Service	619 Avenue I West, Lancaster, CA 93534	LUST case opened and closed in May 1990	DRYCLEANERS; HIST UST; EMI; HAZNET;	1, 2, 3, 5	Moderate: this is a closed LUST site with residual contamination and is not expected to be encountered in the project footprint

Figure 3.10-A-1 Map ID No.	Facility Name	Site Address	Contaminants of Concern/ Lead Agency/ Environmental Issues	EDR Database Listings	Alternative or Maintenance Facility RSA	Ranking Notes
E95	Formal Rental Services Corp/ ACME Rents/ Rental Service Corp	44110 Yucca Avenue, Lancaster, CA	Kerosene; Lahontan RWQCB; release to groundwater reported September 8, 1996 and case granted closure June 12, 2003.	RGA LUST (closed); HAZNET; HIST UST; EMI; Los Angeles Co HMS; RCRA-SQG; FINDS	1, 2, 3	Moderate: this is a closed LUST site with residual contamination which is located in the buffer, and is not expected to be encountered in the project footprint.

AST = Aboveground Storage Tank
 CA FID UST = Cal-EPA's Facility Inventory Database of Underground Storage Tanks
 CERC-NFRAP = Archived Comprehensive Environmental Response, Compensation, and Liability Information System Site Listing
 CHMIRS = California Hazardous Materials Incident Reporting System
 CORTESE = "Cortese" Hazardous Waste & Substances Sites List
 ECHO = Enforcement and Compliance History Online
 EMI = Cal ARB's Emissions Inventory Data
 ENF = Enforcement Action Listing
 ERNS = Emergency Response Notification System
 FID = Facility Inventory Database
 FINDS = USEPA's Facility Index System/Facility Identification Initiative Program Summary Report
 HAZNET = California Department of Toxic Substances Control hazardous waste manifest database (1993+)
 HIST = Historical
 HMS = Hazardous Materials System
 ICIS = Integrated Compliance Information System
 LDS = Land Disposal Site
 LUST = Leaking Underground Storage Tank
 NFRAP = No Further Remedial Action Planned
 NPDES = U.S. EPA's National Pollutant Discharge Elimination System
 RCRA = Resource Conservation and Recovery Act
 RCRA-LQG = RCRA Large Quantity Generators
 RCRA-NonGen = RCRA Non Generators/No Longer Regulated
 RCRA-SQG = RCRA Small Quantity Generators
 RGA = Recovered Government Archive
 RMP = Risk Management Plan
 SLIC = Spills, Leaks, Investigations, and Cleanups
 SWEEPS = Statewide Environmental Evaluation and Planning System
 SWF/LF = Solid Waste Information System
 SWRCY = California recycler database
 TRIS = USEPA's Toxic Chemical Release Inventory System
 TSCA = Toxic Substances Control Act
 UIC = Underground injection wells listed in the California Oil and Gas Wells database
 US Hist Auto Stat = U.S. Historical Auto Station database
 USMINES = Mines Master Index File
 UST = Underground Storage Tank
 WMUDS/SWAT = Waste Management Unit Database System
 WDS = Waste Discharge System



SOURCE: Esri/National Geographic (2019); Engineering data from CHSRA (7/2020); Environmental Data Resources, Inc. (2015 and 2016); Sanborn (2015).

December 23, 2020

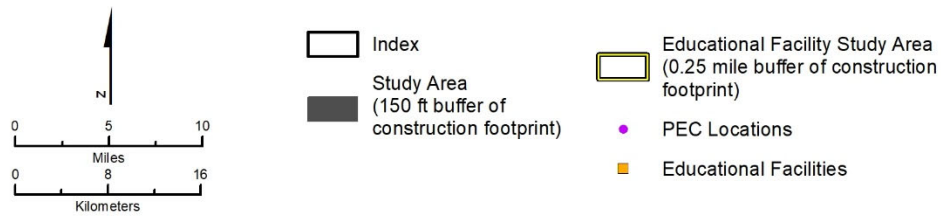
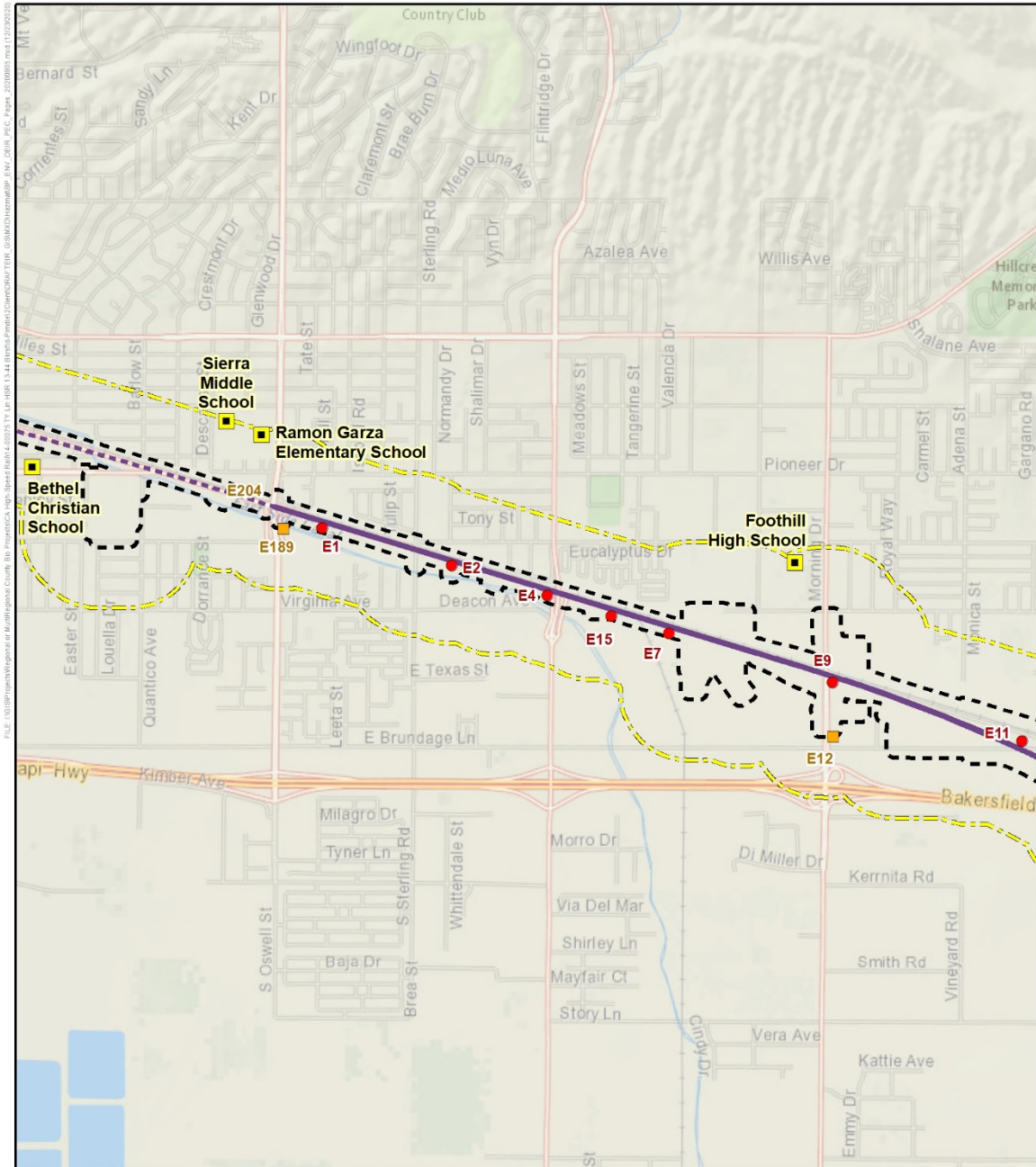


Figure 3.10-A-1 PEC Sites in the RSA - Overview



SOURCE: Esri/National Geographic (2020); Engineering data from CHSRA (7/2020); Environmental Data Resources, Inc. (2015 and 2016); Sanborn (2015).

December 23, 2020

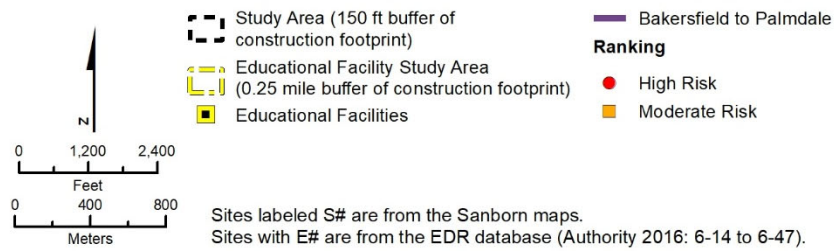
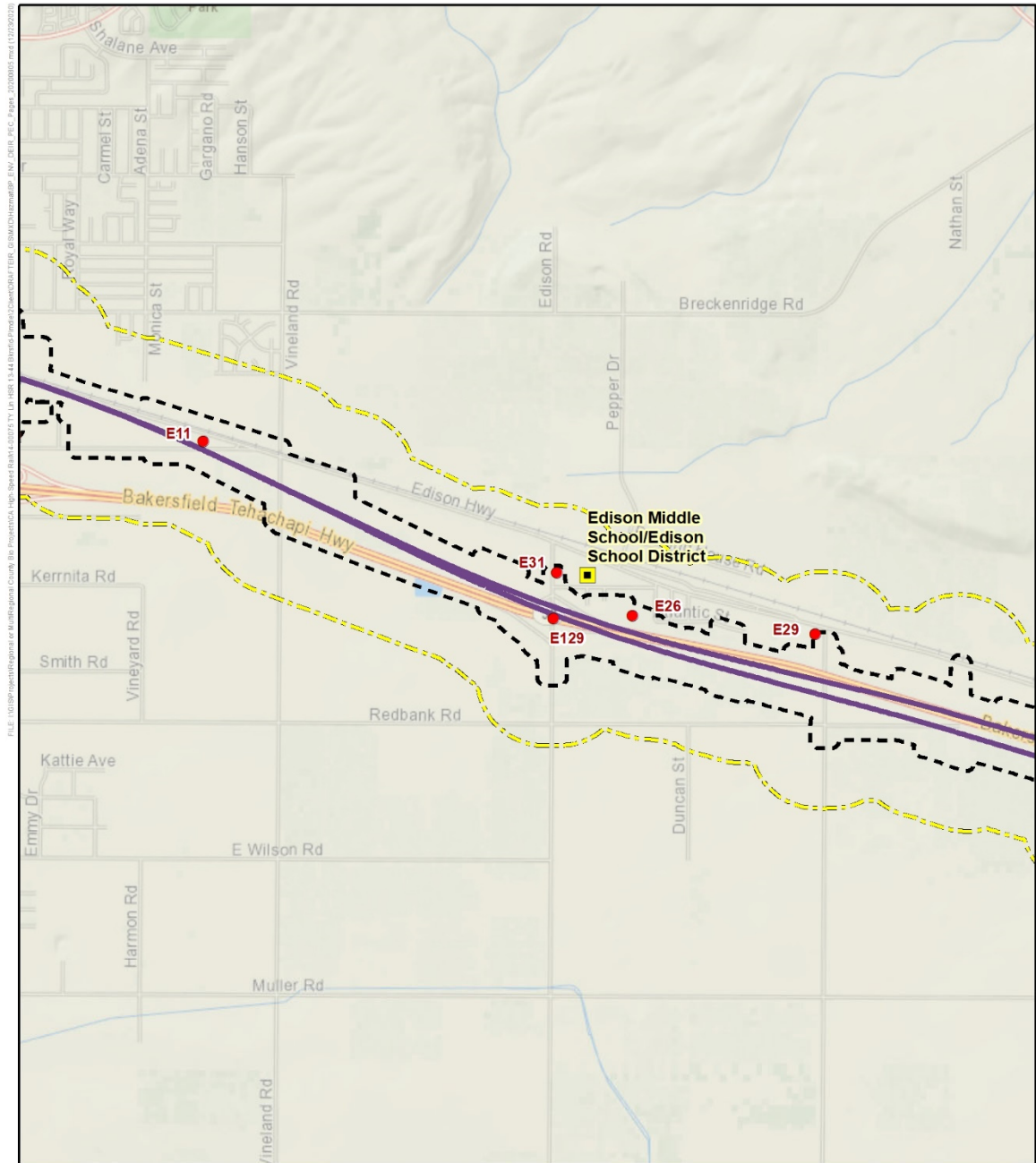


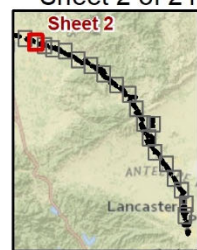
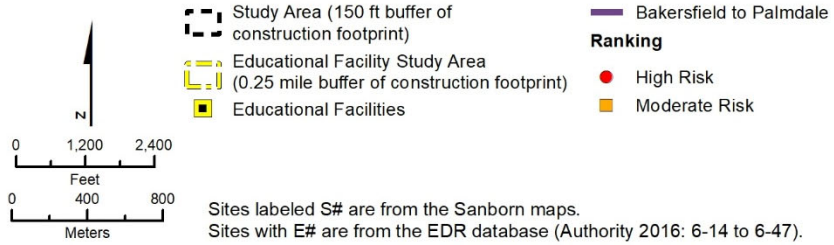
Figure 3.10-A-1 PEC Sites in the RSA (Sheet 1)



SOURCE: Esri/National Geographic (2020); Engineering data from CHSRA (7/2020); Environmental Data Resources, Inc. (2015 and 2016); Sanborn (2015).

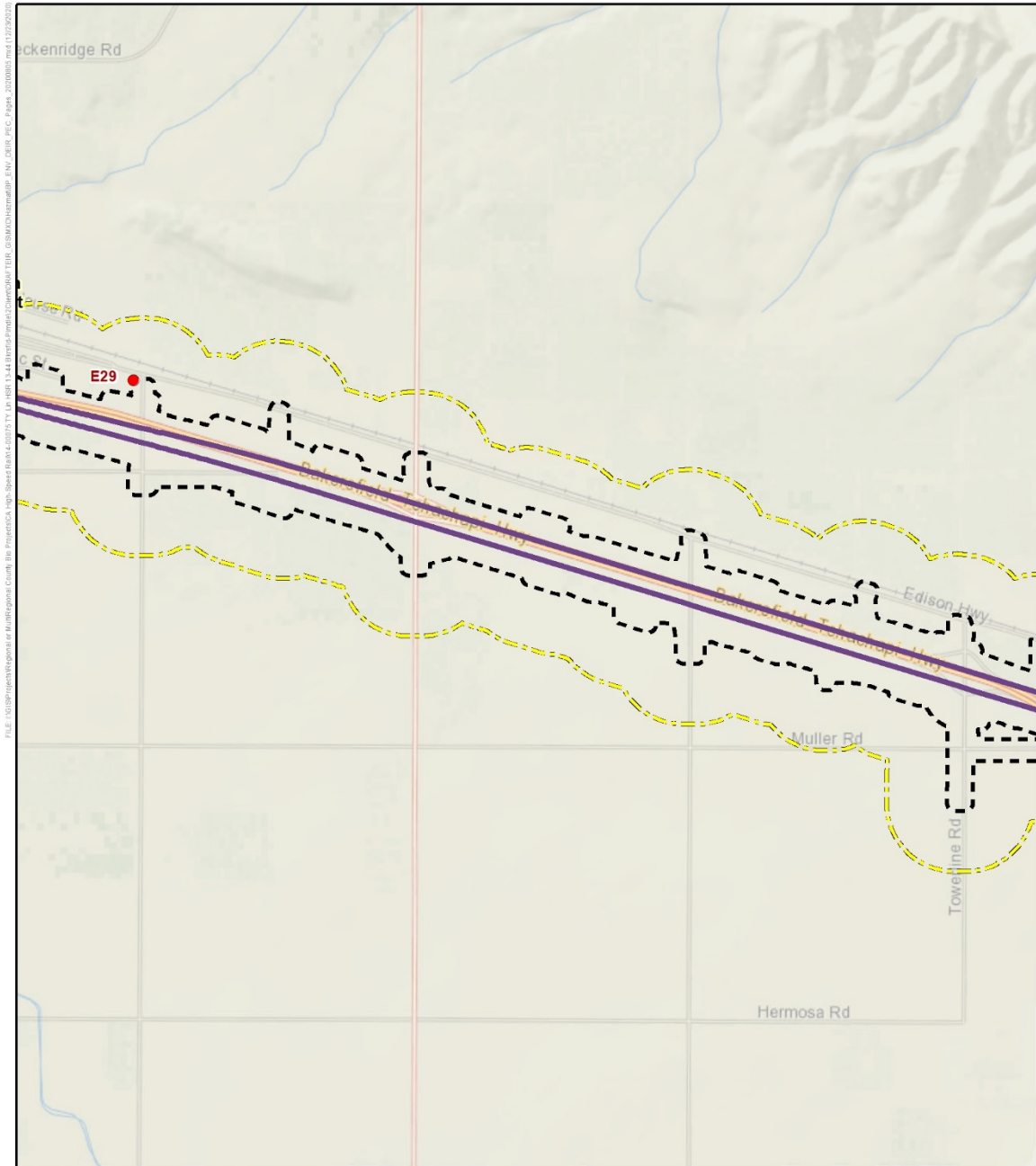
December 23, 2020

Sheet 2 of 21



Sites labeled S# are from the Sanborn maps.
 Sites with E# are from the EDR database (Authority 2016: 6-14 to 6-47).

Figure 3.10-A-1 PEC Sites in the RSA (Sheet 2)



SOURCE: Esri/National Geographic (2020); Engineering data from CHSRA (7/2020); Environmental Data Resources, Inc. (2015 and 2016); Sanborn (2015).

December 23, 2020

- Study Area (150 ft buffer of construction footprint)
- Educational Facility Study Area (0.25 mile buffer of construction footprint)
- Educational Facilities

Bakersfield to Palmdale

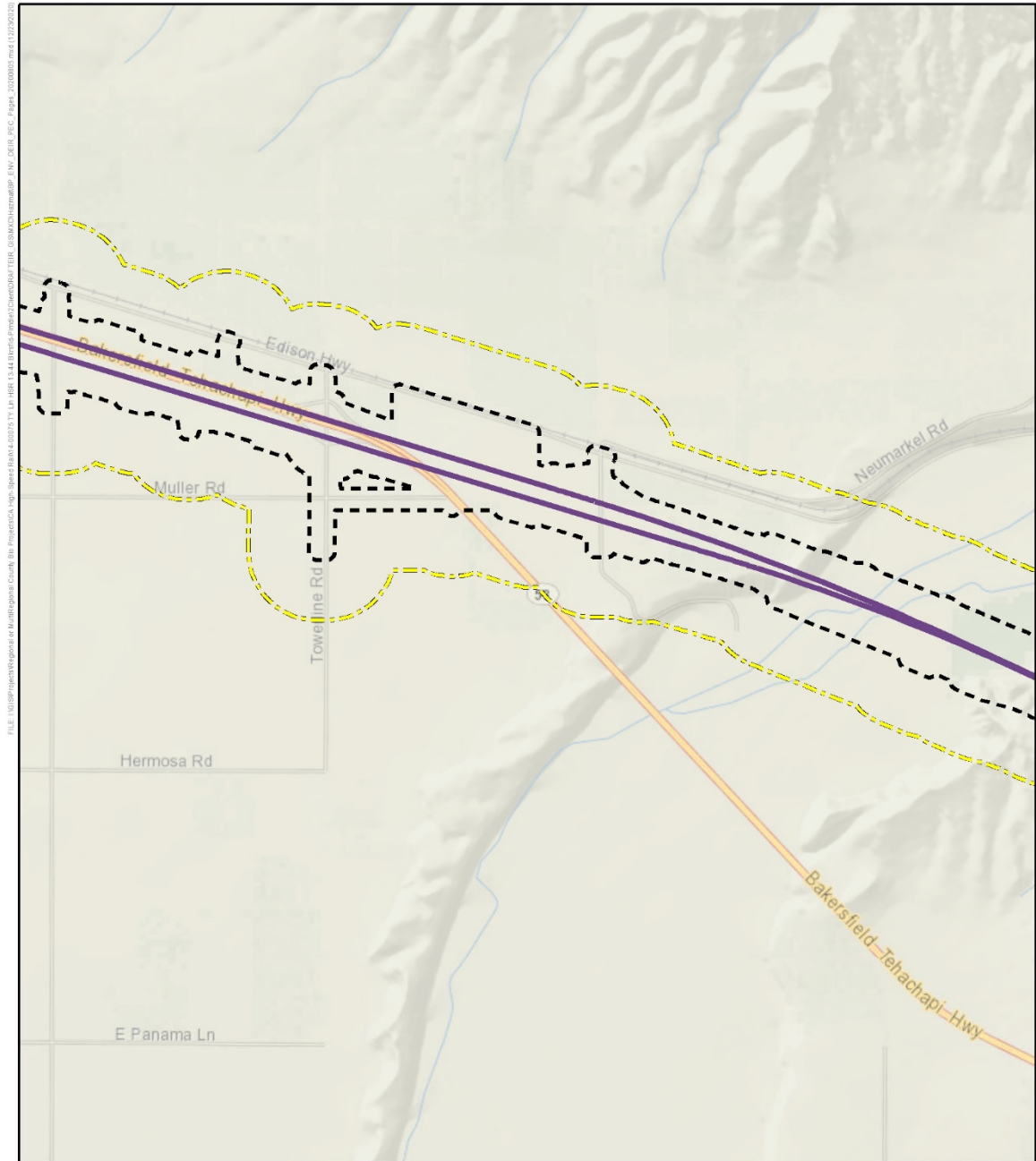
Ranking

- High Risk

Sheet 3 of 21

Sites labeled S# are from the Sanborn maps.
 Sites with E# are from the EDR database (Authority 2016: 6-14 to 6-47).

Figure 3.10-A-1 PEC Sites in the RSA (Sheet 3)



SOURCE: Esri/National Geographic (2020); Engineering data from CHSRA (7/2020); Environmental Data Resources, Inc. (2015 and 2016); Sanborn (2015).

December 23, 2020

Sheet 4 of 21

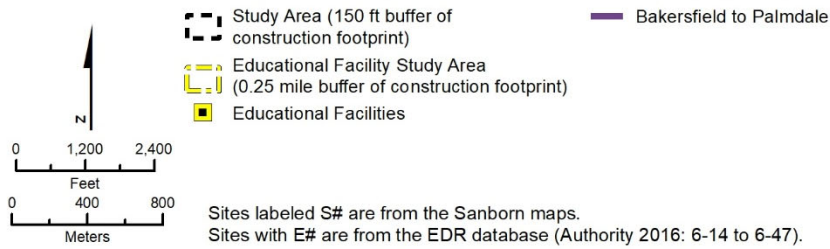
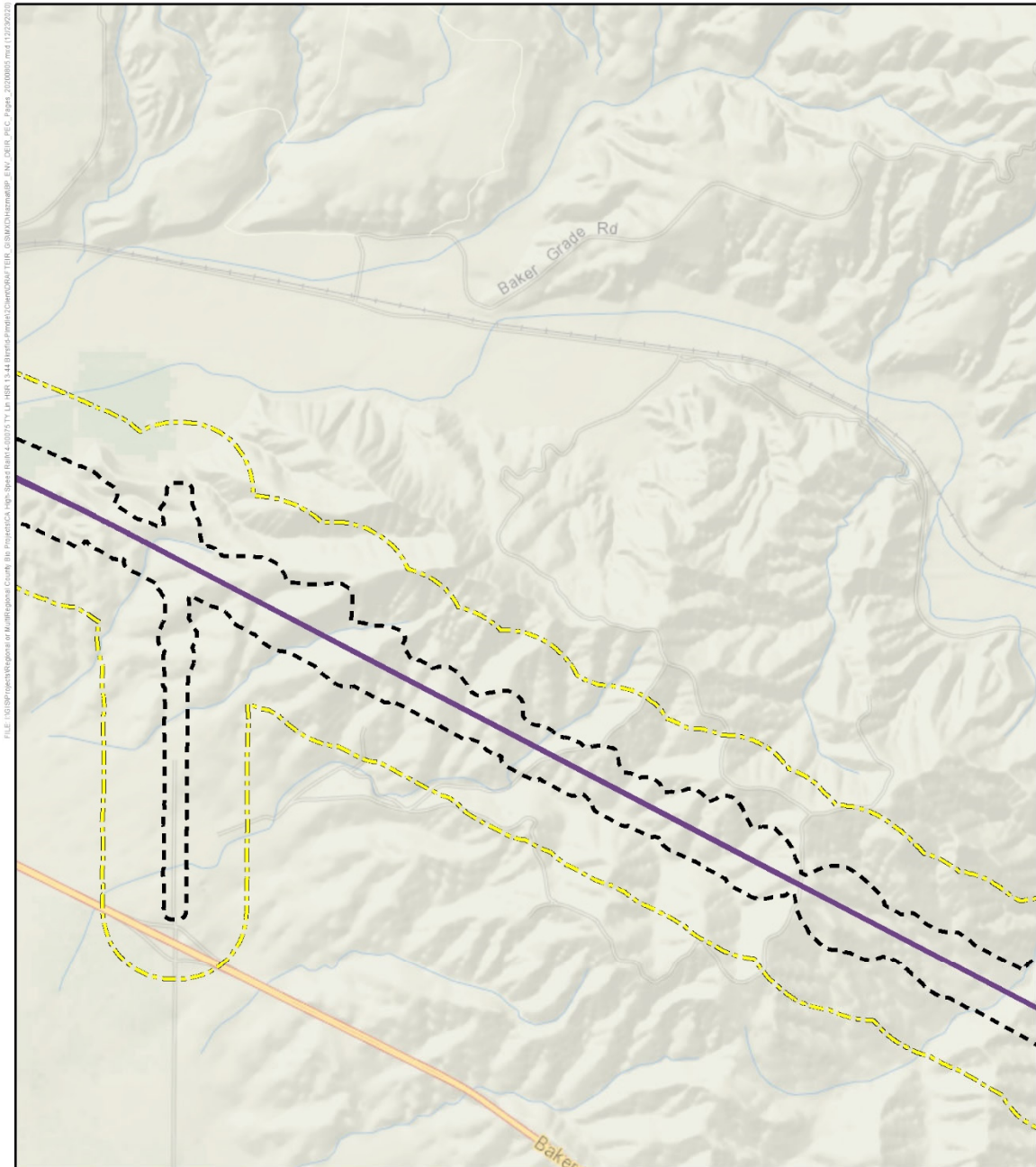


Figure 3.10-A-1 PEC Sites in the RSA (Sheet 4)



SOURCE: Esri/National Geographic (2020); Engineering data from CHSRA (7/2020); Environmental Data Resources, Inc. (2015 and 2016); Sanborn (2015).

December 23, 2020

Sheet 5 of 21

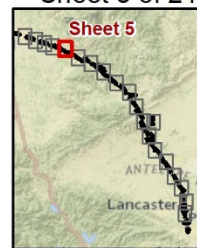
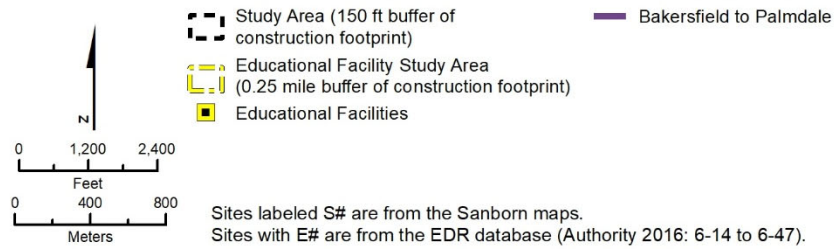
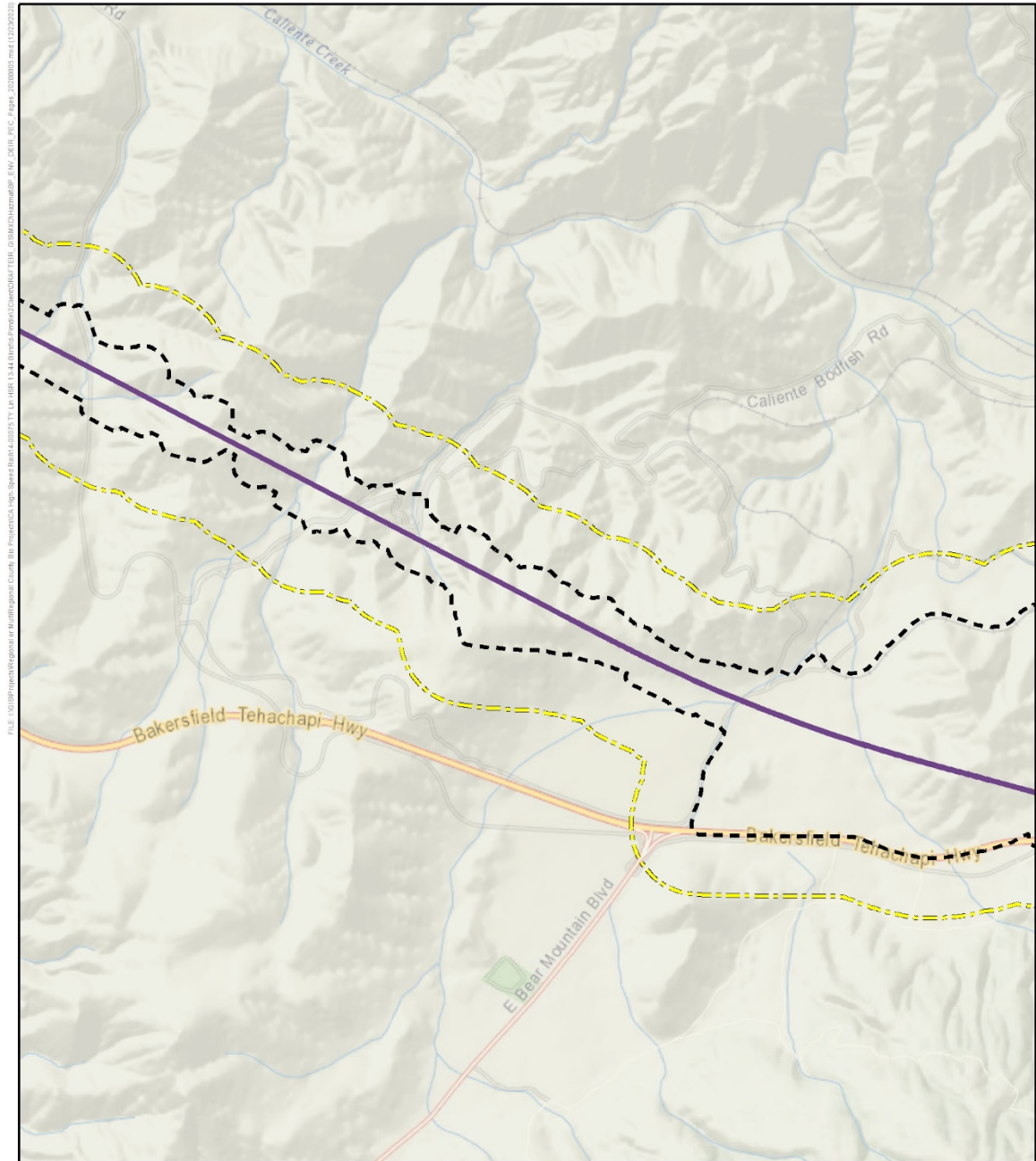


Figure 3.10-A-1 PEC Sites in the RSA (Sheet 5)



SOURCE: Esri/National Geographic (2020); Engineering data from CHSRA (7/2020); Environmental Data Resources, Inc. (2015 and 2016); Sanborn (2015).

December 23, 2020

Sheet 6 of 21

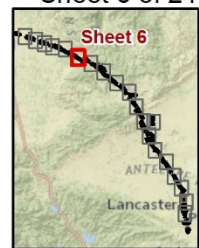
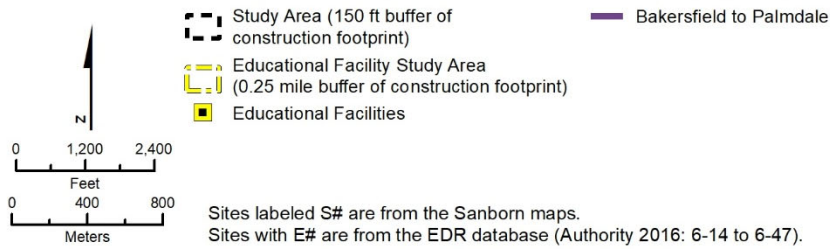
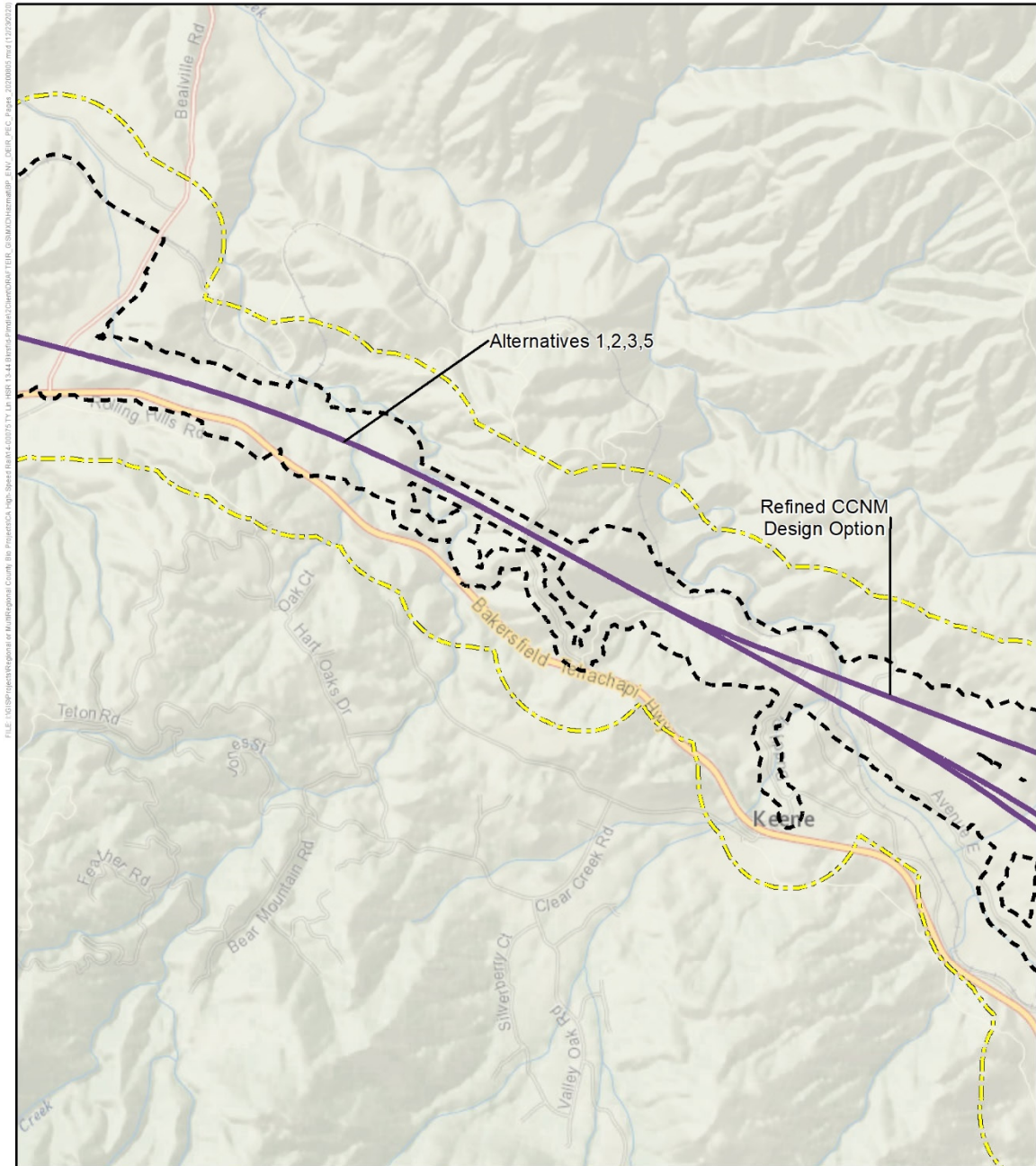


Figure 3.10-A-1 PEC Sites in the RSA (Sheet 6)



SOURCE: Esri/National Geographic (2020); Engineering data from CHSRA (7/2020); Environmental Data Resources, Inc. (2015 and 2016); Sanborn (2015).

December 23, 2020

Sheet 7 of 21

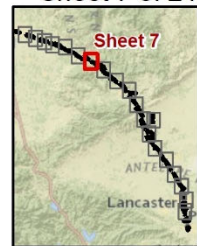
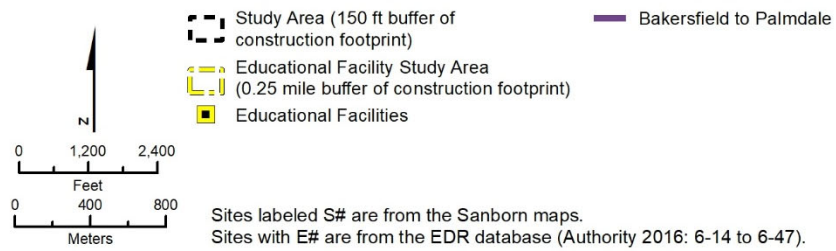
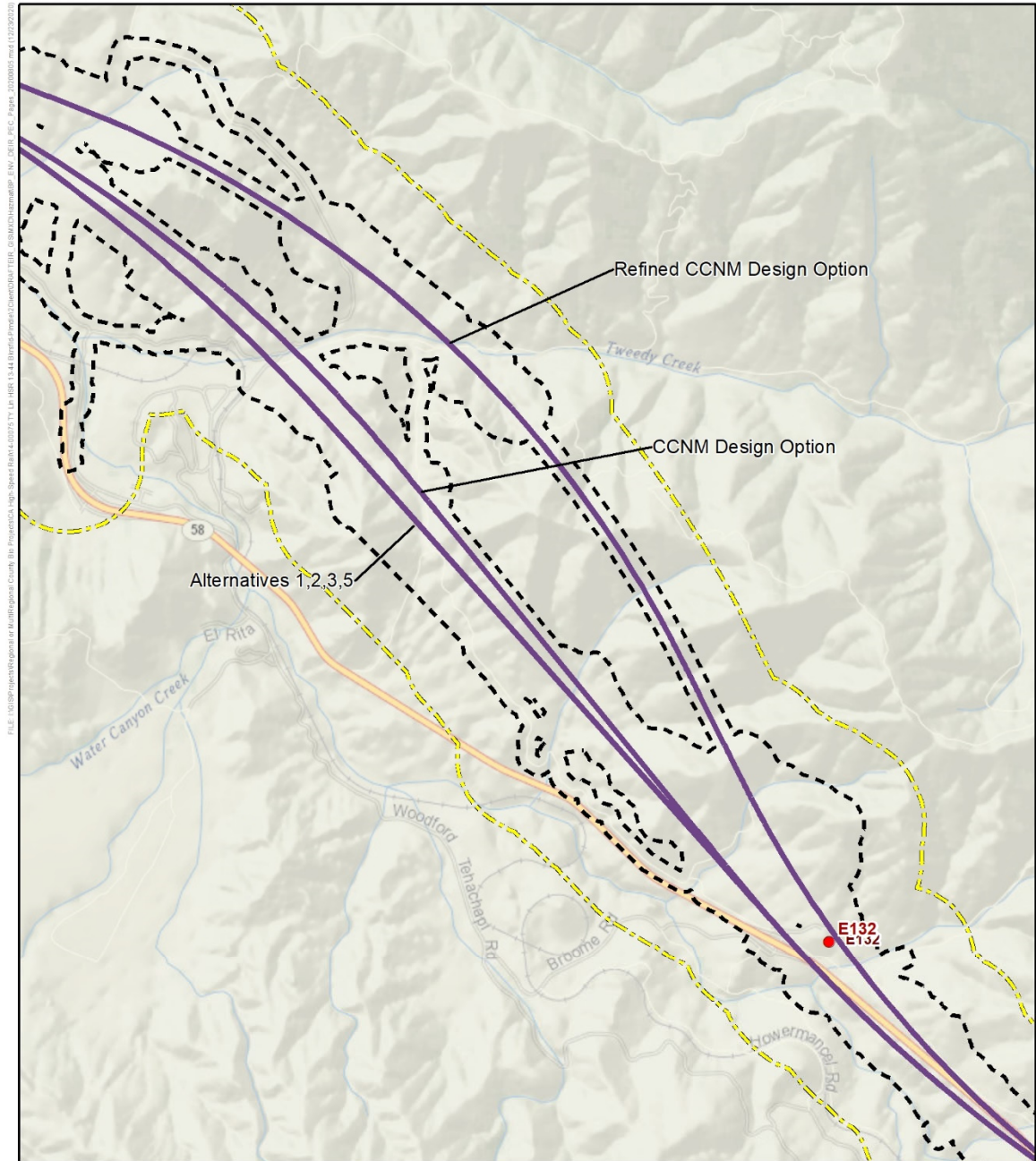


Figure 3.10-A-1 PEC Sites in the RSA (Sheet 7)



SOURCE: Esri/National Geographic (2020); Engineering data from CHSRA (7/2020); Environmental Data Resources, Inc. (2015 and 2016); Sanborn (2015).

December 23, 2020

Sheet 8 of 21

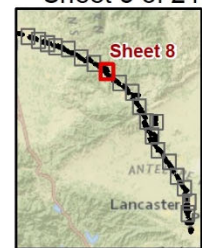
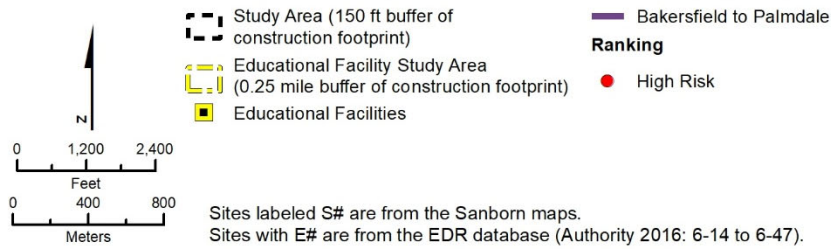
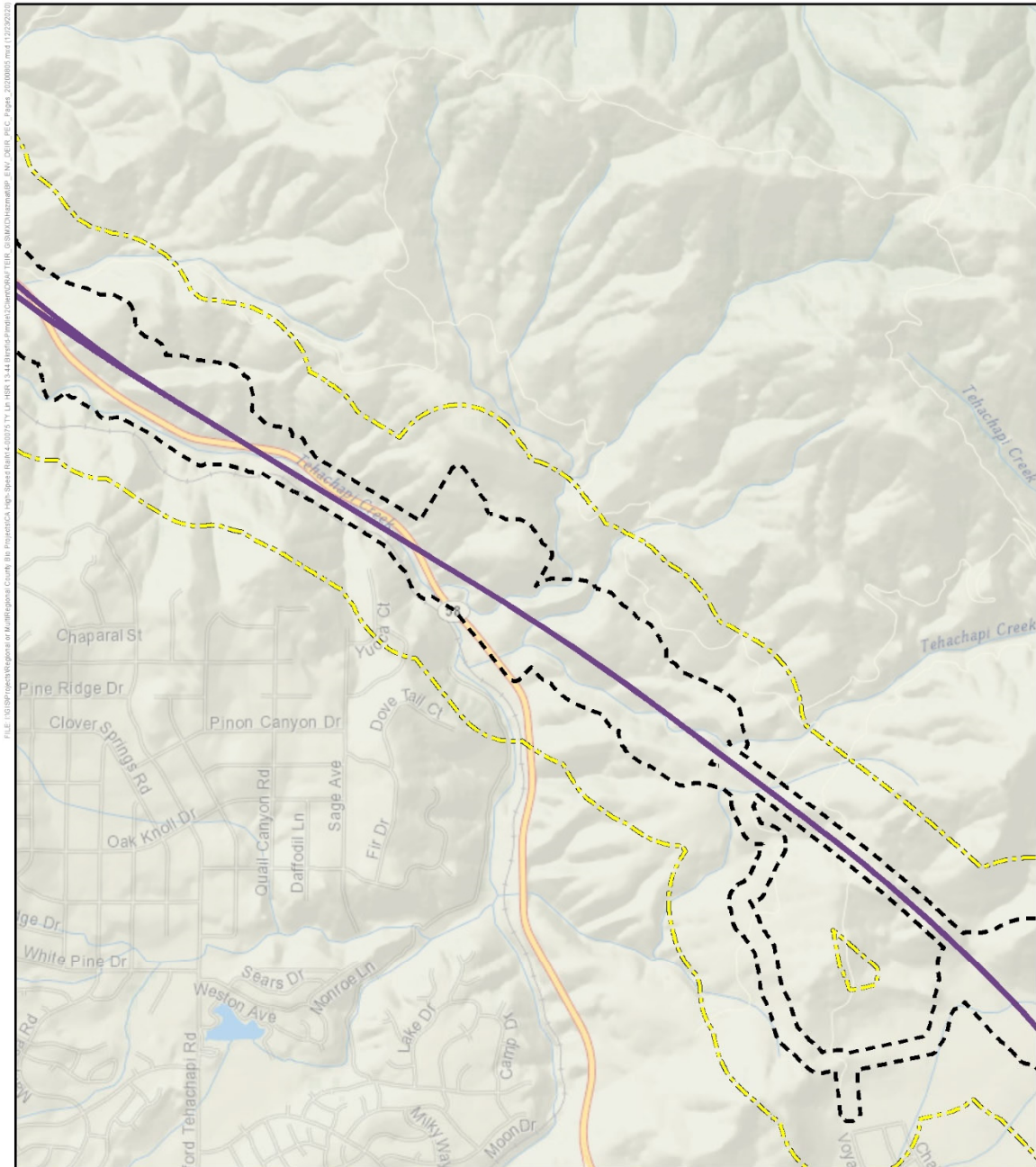


Figure 3.10-A-1 PEC Sites in the RSA (Sheet 8)



SOURCE: Esri/National Geographic (2020); Engineering data from CHSRA (7/2020); Environmental Data Resources, Inc. (2015 and 2016); Sanborn (2015).

December 23, 2020

Sheet 9 of 21

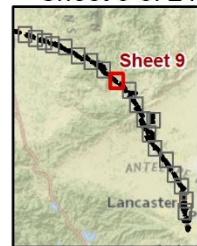
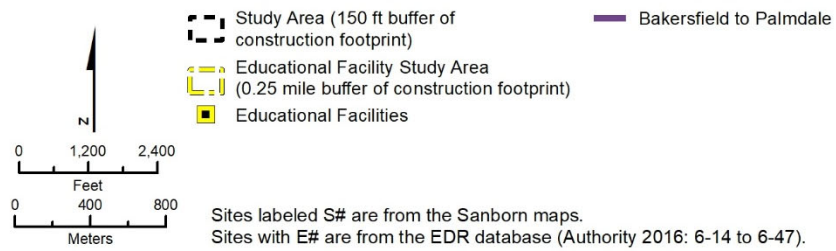
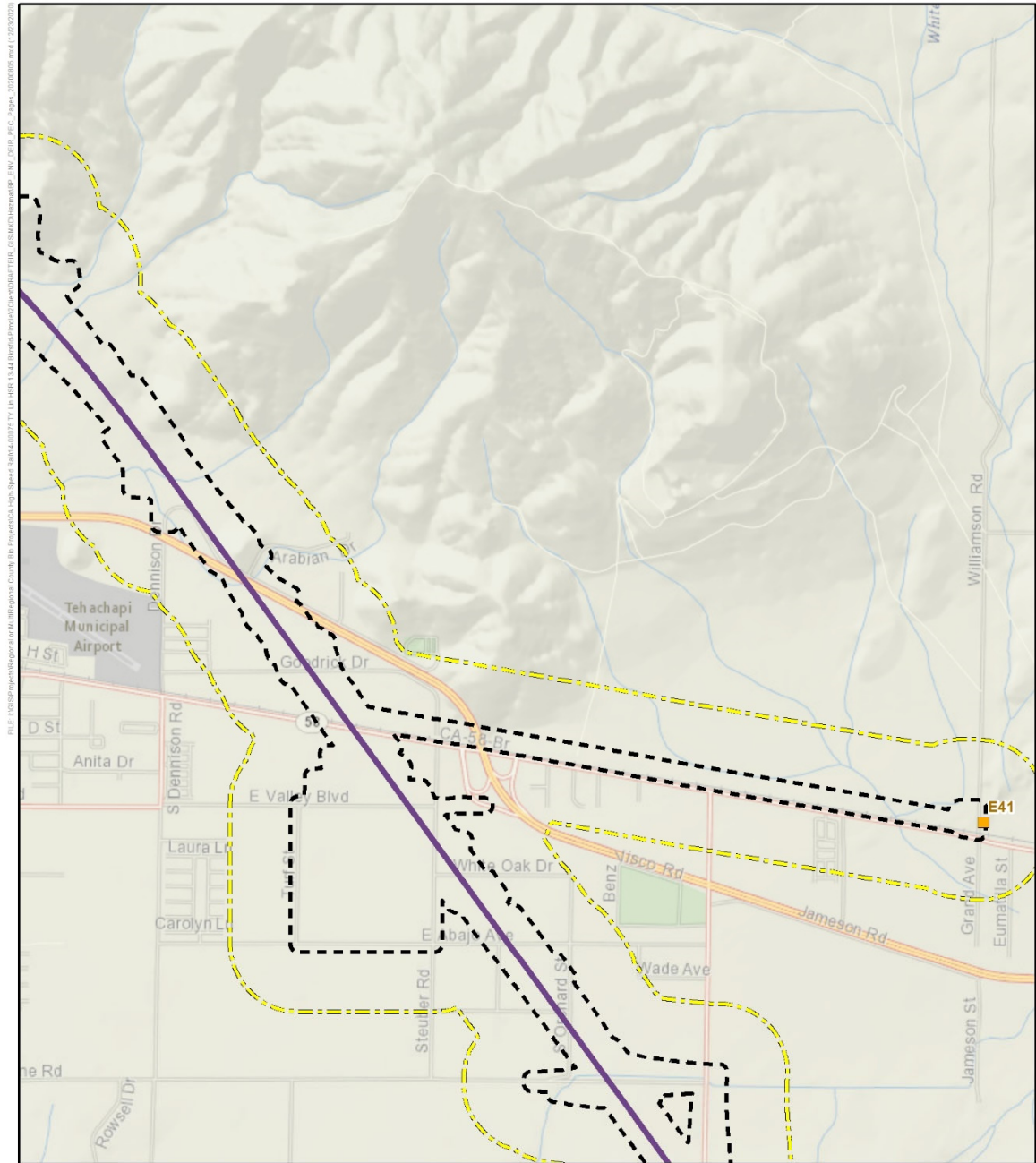


Figure 3.10-A-1 PEC Sites in the RSA (Sheet 9)



SOURCE: Esri/National Geographic (2020); Engineering data from CHSRA (7/2020); Environmental Data Resources, Inc. (2015 and 2016); Sanborn (2015).

December 23, 2020

- Study Area (150 ft buffer of construction footprint)
- Educational Facility Study Area (0.25 mile buffer of construction footprint)
- Educational Facilities

Bakersfield to Palmdale

Ranking

- Moderate Risk

Sites labeled S# are from the Sanborn maps.
 Sites with E# are from the EDR database (Authority 2016: 6-14 to 6-47).

Sheet 10 of 21

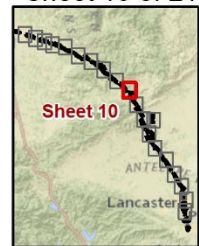
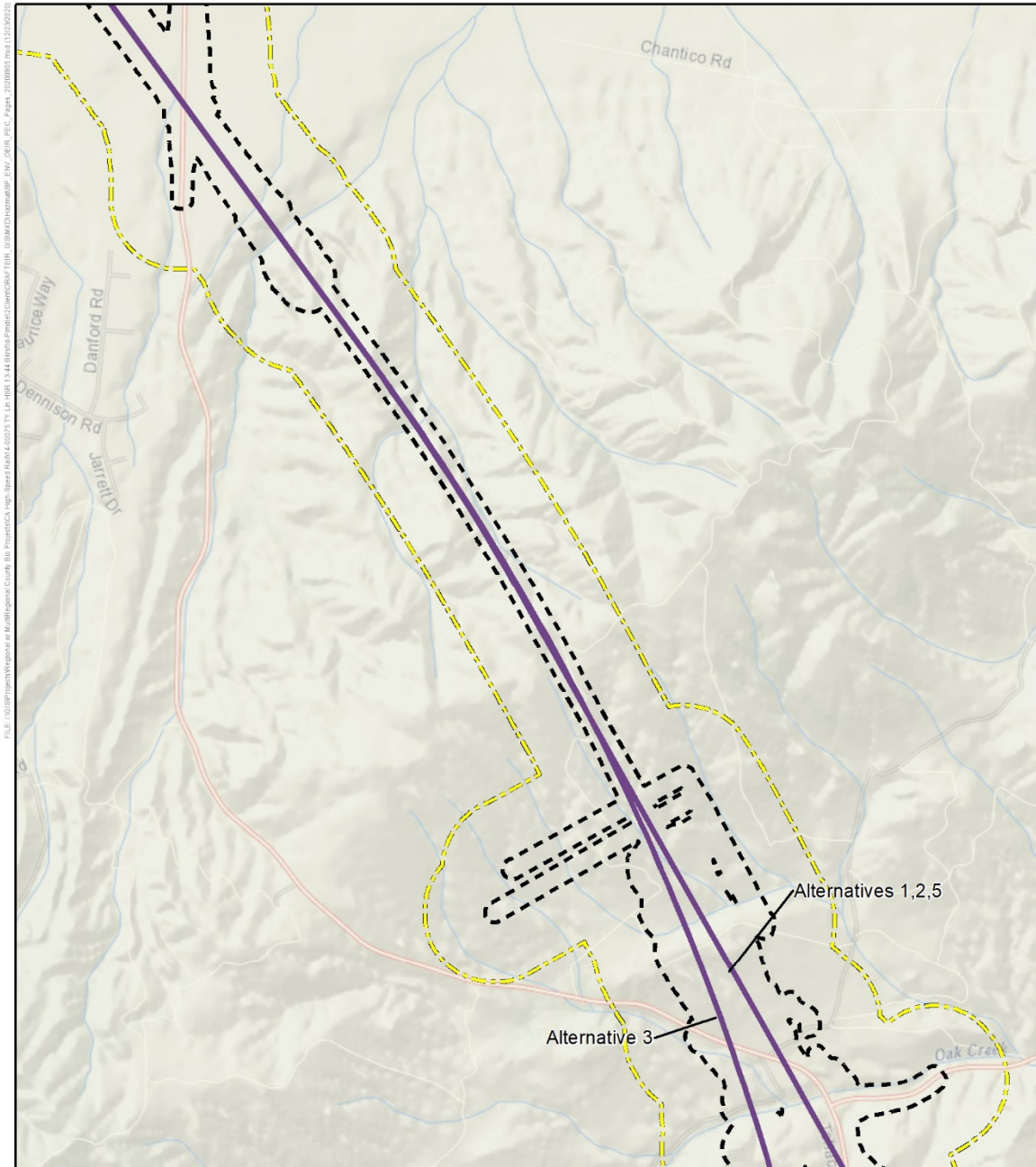
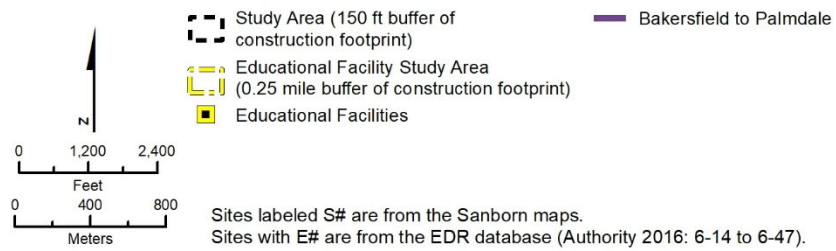


Figure 3.10-A-1 PEC Sites in the RSA (Sheet 10)



SOURCE: Esri/National Geographic (2020); Engineering data from CHSRA (7/2020); Environmental Data Resources, Inc. (2015 and 2016); Sanborn (2015).

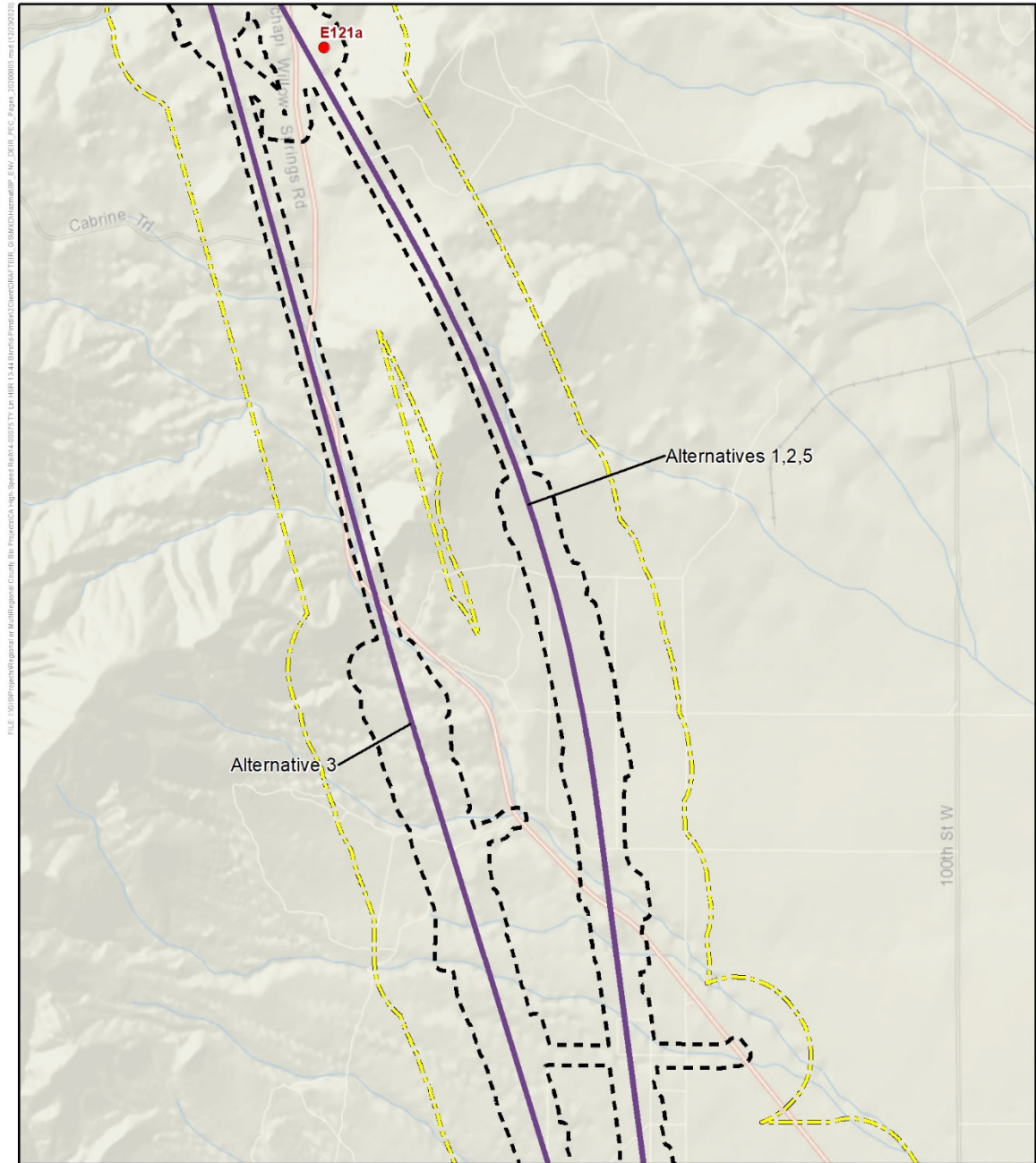
December 23, 2020



Sheet 11 of 21



Figure 3.10-A-1 PEC Sites in the RSA (Sheet 11)



SOURCE: Esri/National Geographic (2020); Engineering data from CHSRA (7/2020); Environmental Data Resources, Inc. (2015 and 2016); Sanborn (2015).

December 23, 2020

	Study Area (150 ft buffer of construction footprint)	Bakersfield to Palmdale
	Educational Facility Study Area (0.25 mile buffer of construction footprint)	High Risk
	Educational Facilities	

Sites labeled S# are from the Sanborn maps.
 Sites with E# are from the EDR database (Authority 2016: 6-14 to 6-47).

Sheet 12 of 21

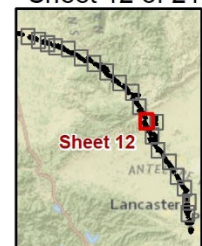
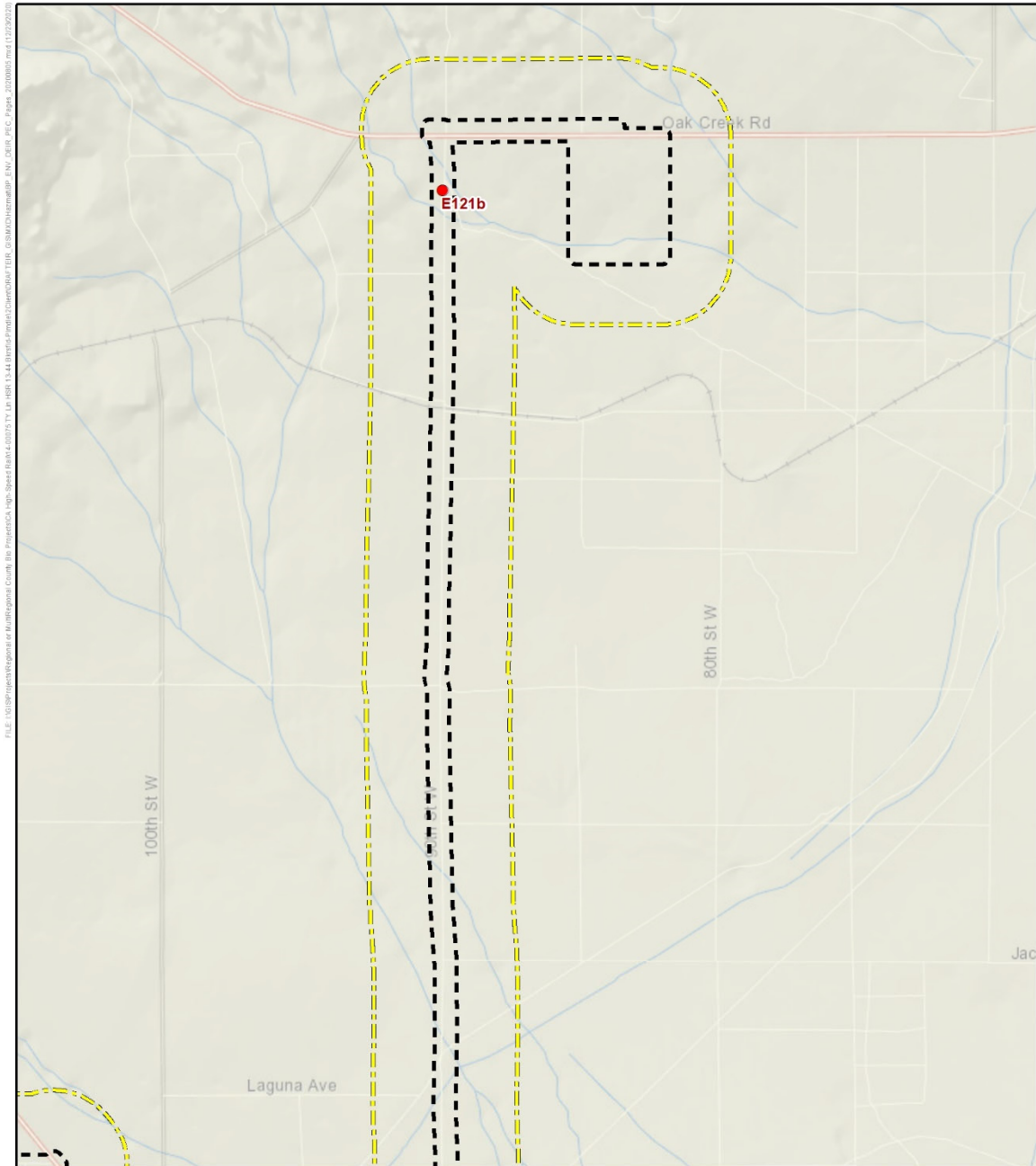


Figure 3.10-A-1 PEC Sites in the RSA (Sheet 12)



SOURCE: Esri/National Geographic (2020); Engineering data from CHSRA (7/2020); Environmental Data Resources, Inc. (2015 and 2016); Sanborn (2015).

December 23, 2020

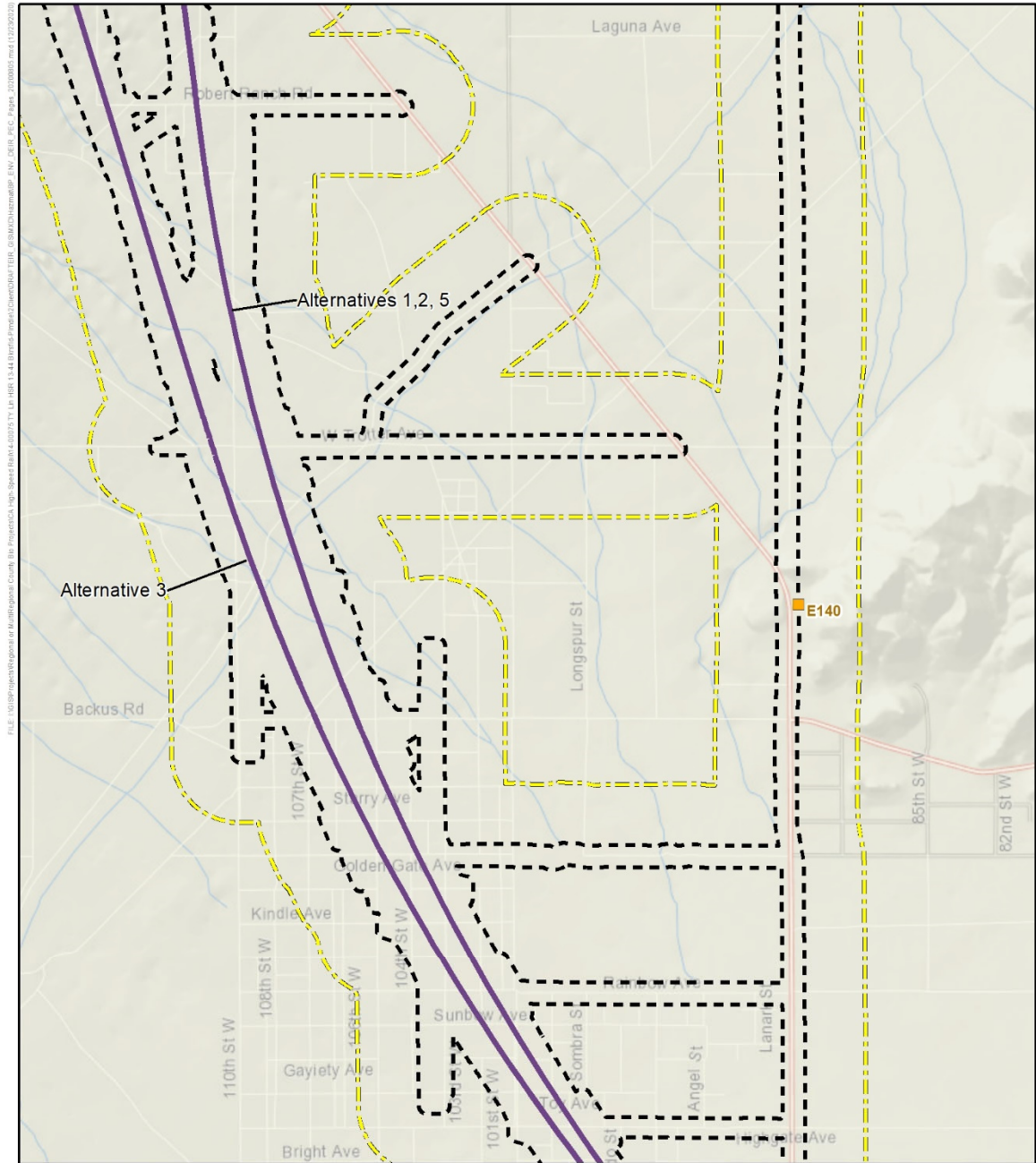
 	Study Area (150 ft buffer of construction footprint)	Bakersfield to Palmdale
	Educational Facility Study Area (0.25 mile buffer of construction footprint)	Ranking High Risk
	Educational Facilities	

Sites labeled S# are from the Sanborn maps.
 Sites with E# are from the EDR database (Authority 2016: 6-14 to 6-47).

Sheet 13 of 21

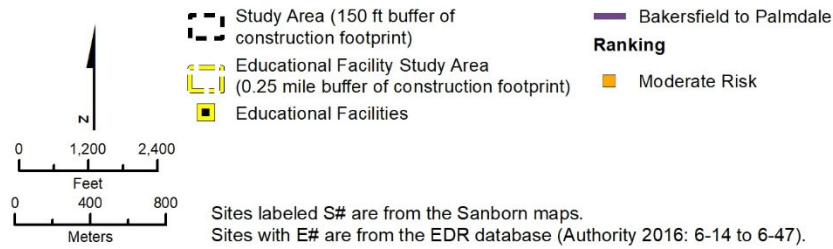


Figure 3.10-A-1 PEC Sites in the RSA (Sheet 13)



SOURCE: Esri/National Geographic (2020); Engineering data from CHSRA (7/2020); Environmental Data Resources, Inc. (2015 and 2016); Sanborn (2015).

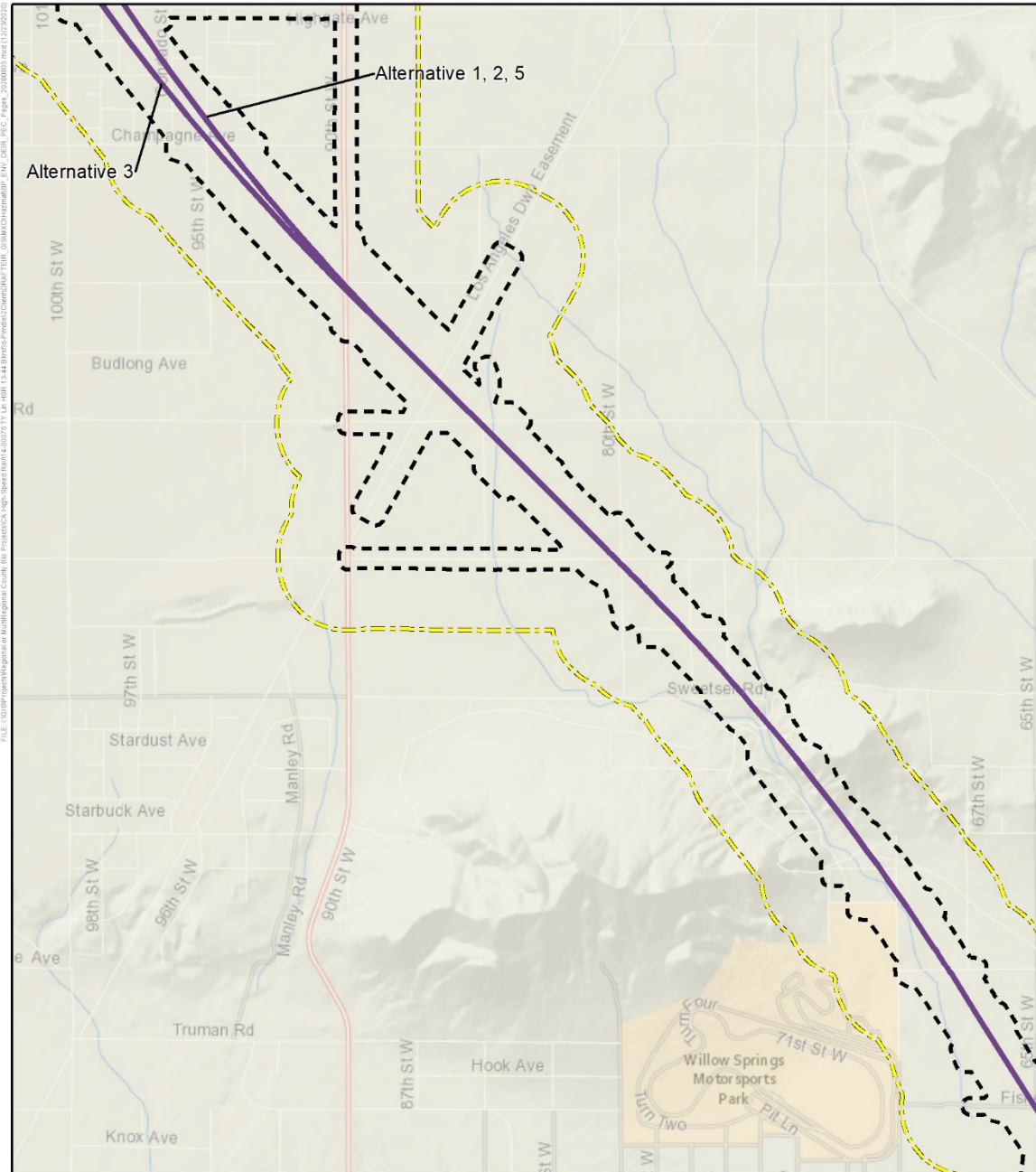
December 23, 2020



Sheet 14 of 21

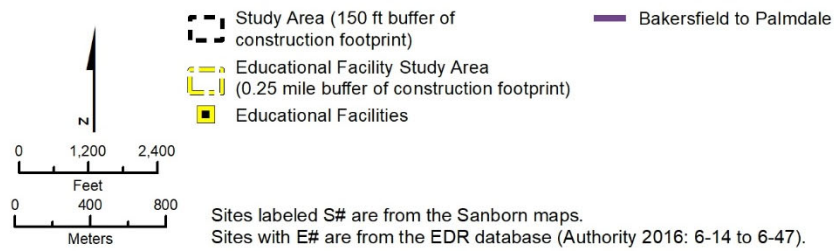


Figure 3.10-A-1 PEC Sites in the RSA (Sheet 14)



SOURCE: Esri/National Geographic (2020); Engineering data from CHSRA (7/2020); Environmental Data Resources, Inc. (2015 and 2016); Sanborn (2015).

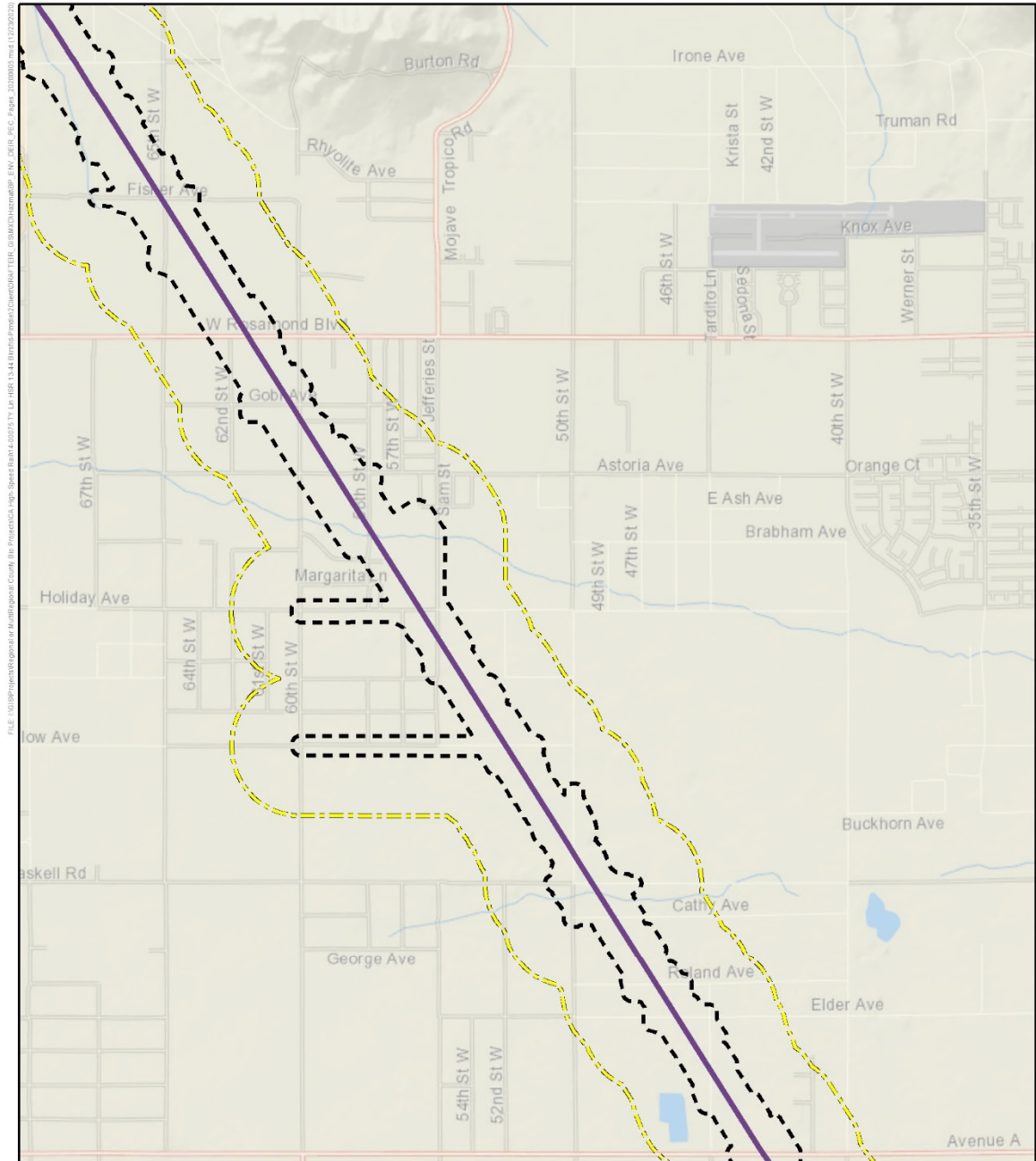
December 23, 2020



Sheet 15 of 21



Figure 3.10-A-1 PEC Sites in the RSA (Sheet 15)



SOURCE: Esri/National Geographic (2020); Engineering data from CHSRA (7/2020); Environmental Data Resources, Inc. (2015 and 2016); Sanborn (2015).

December 23, 2020

Study Area (150 ft buffer of construction footprint)
 Bakersfield to Palmdale

Educational Facility Study Area (0.25 mile buffer of construction footprint)

Educational Facilities

0 1,200 2,400
 Feet
 0 400 800
 Meters

Sites labeled S# are from the Sanborn maps.
 Sites with E# are from the EDR database (Authority 2016: 6-14 to 6-47).

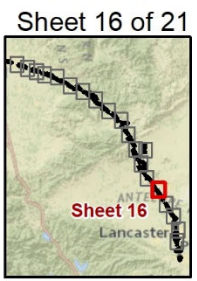
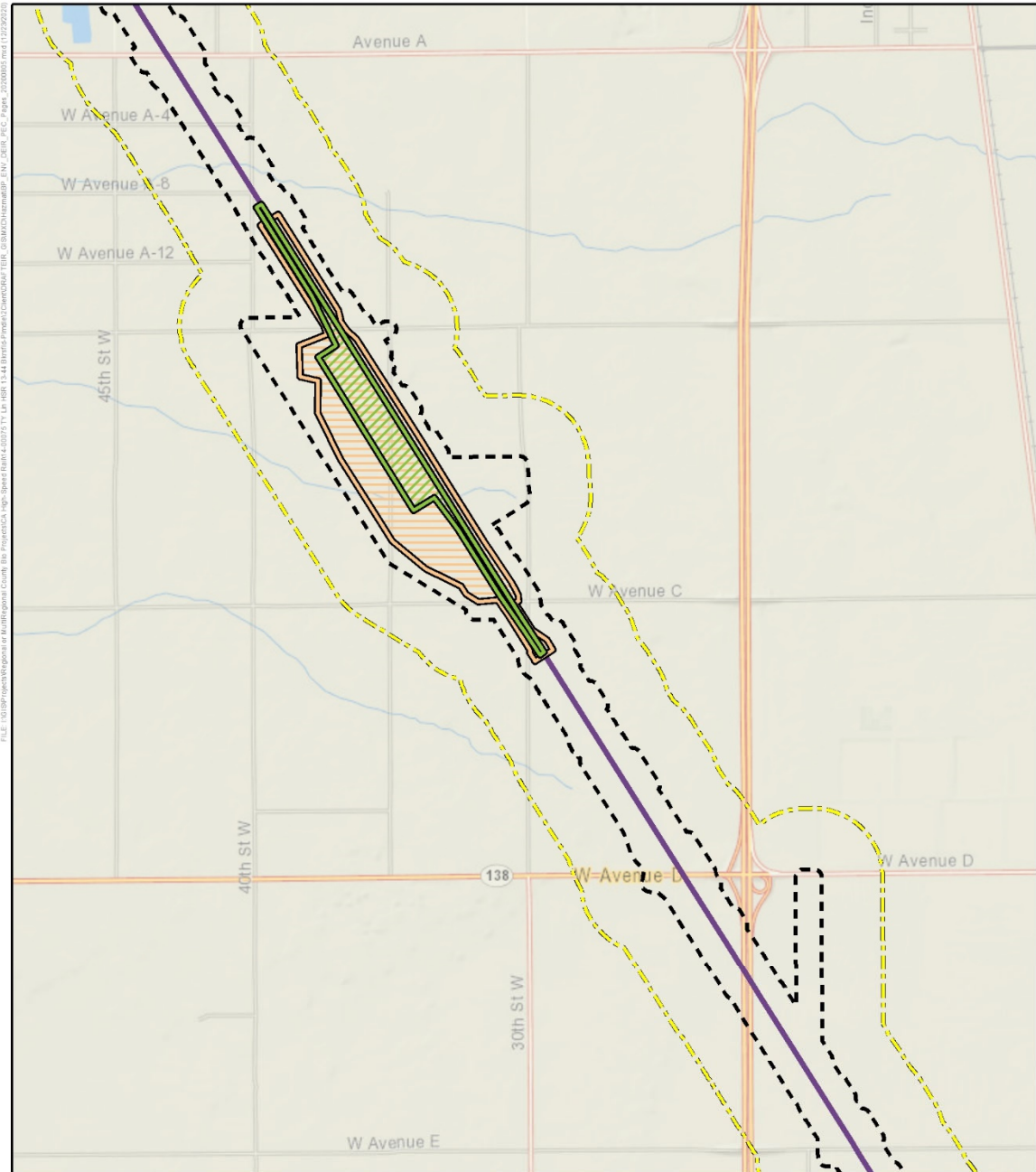
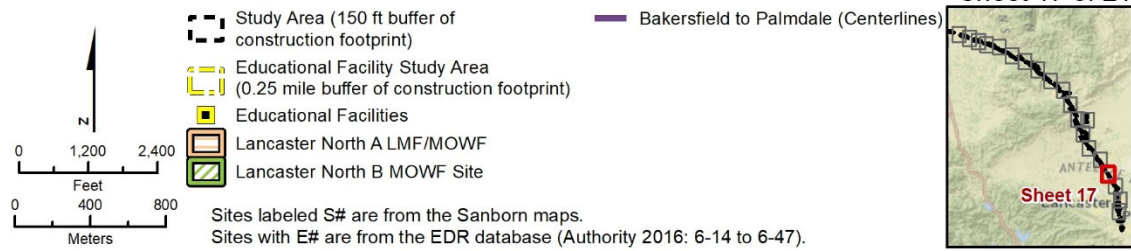


Figure 3.10-A-1 PEC Sites in the RSA (Sheet 16)



SOURCE: Esri/National Geographic (2020); Engineering data from CHSRA (7/2020); Environmental Data Resources, Inc. (2015 and 2016); Sanborn (2015).

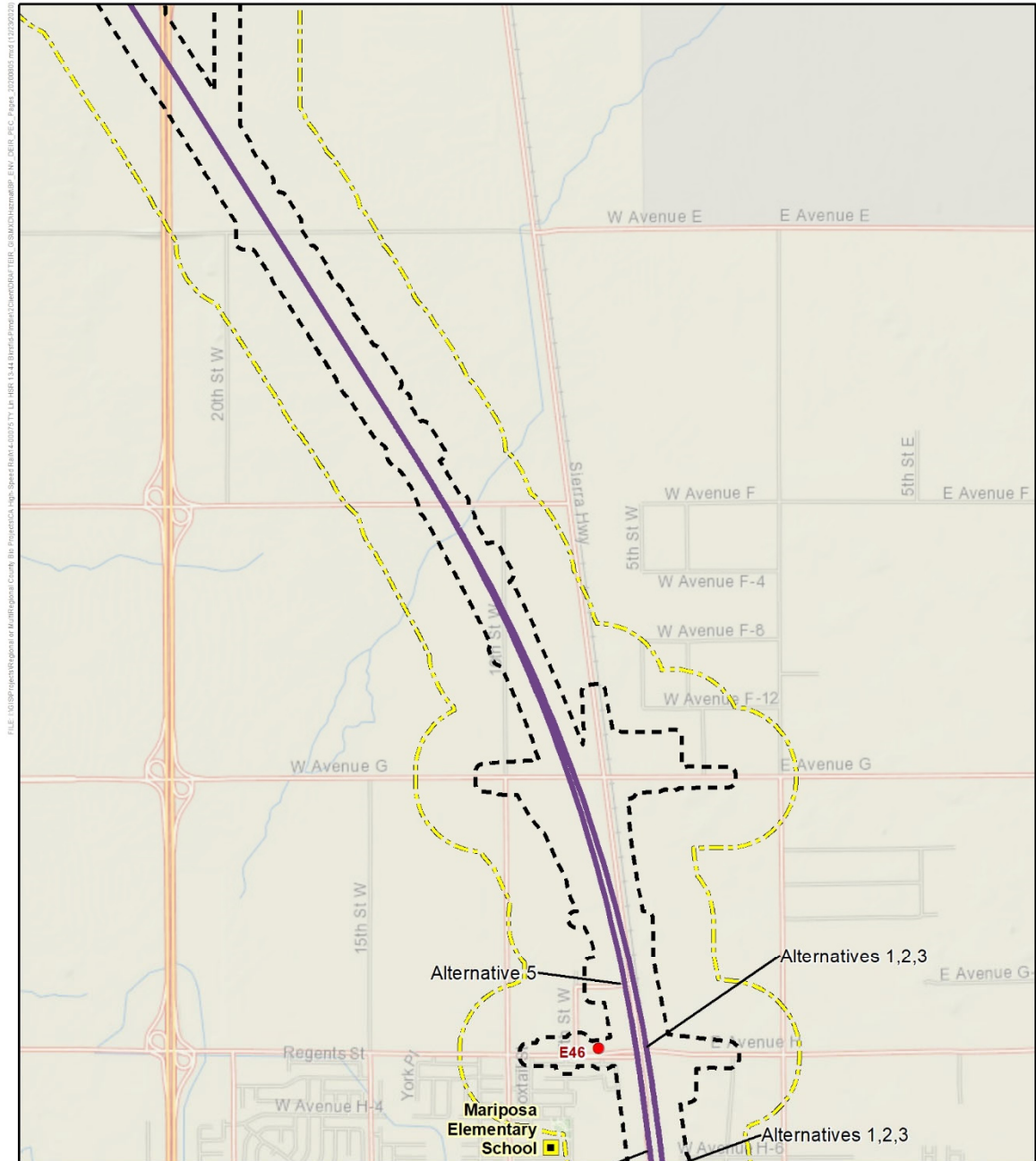
December 23, 2020



Sheet 17 of 21

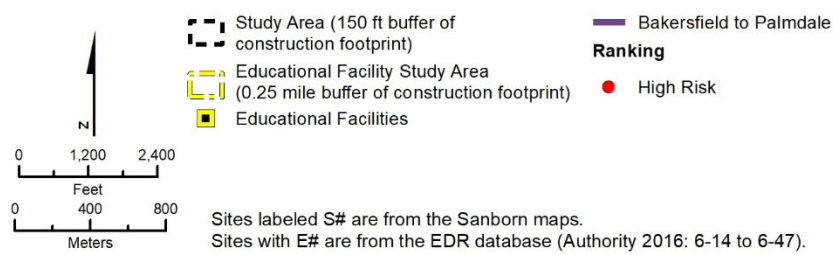


Figure 3.10-A-1 PEC Sites in the RSA (Sheet 17)



SOURCE: Esri/National Geographic (2020); Engineering data from CHSRA (7/2020); Environmental Data Resources, Inc. (2015 and 2016); Sanborn (2015).

December 23, 2020



Sheet 18 of 21

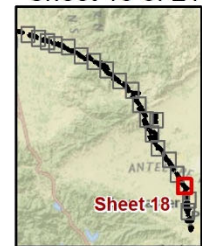
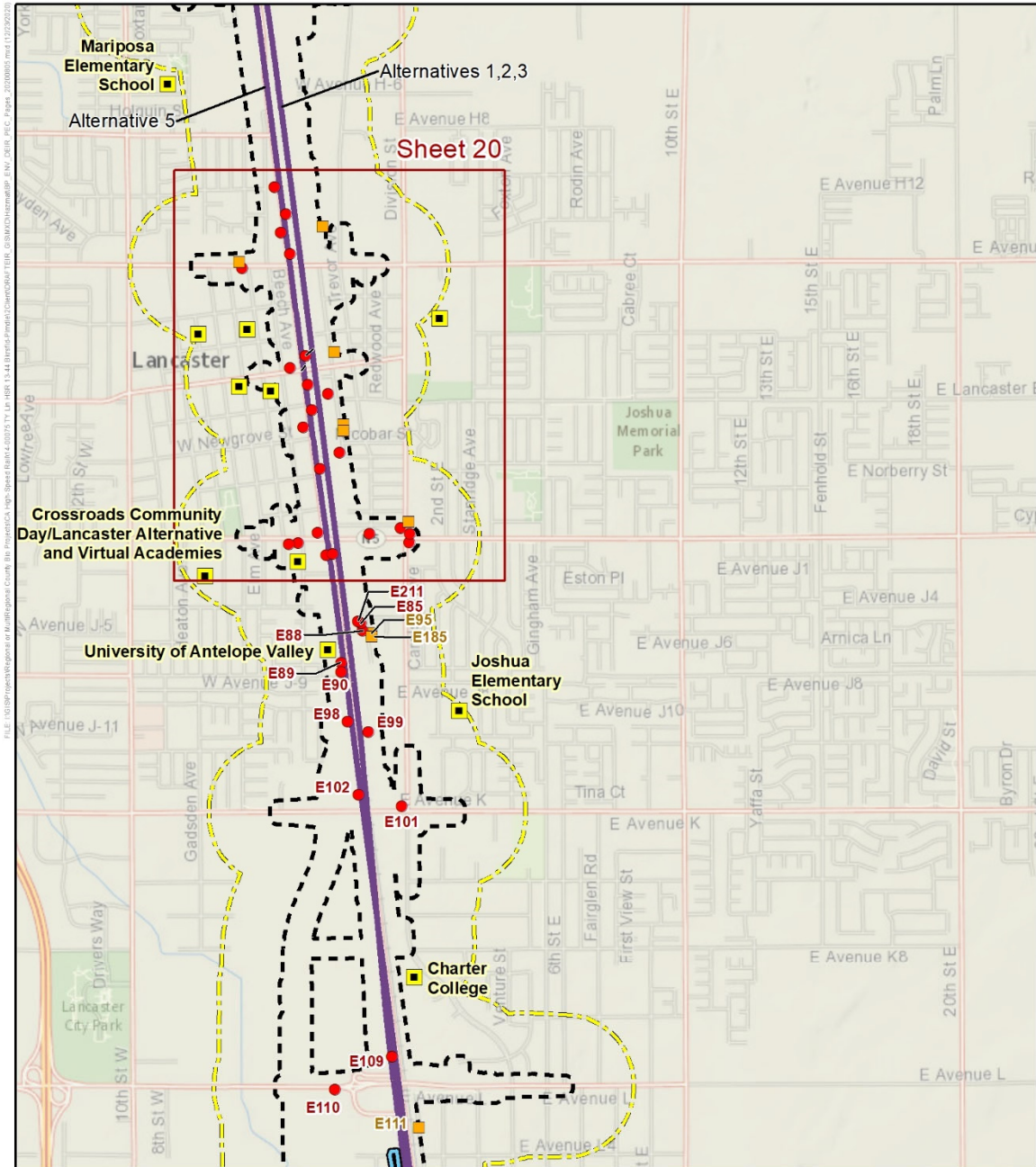
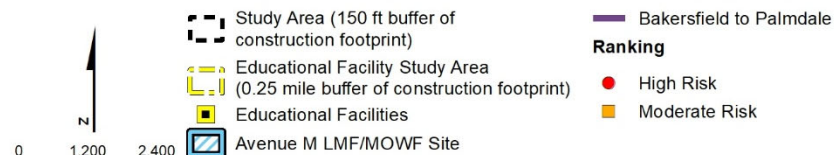


Figure 3.10-A-1 PEC Sites in the RSA (Sheet 18)



SOURCE: Esri/National Geographic (2020); Engineering data from CHSRA (7/2020); Environmental Data Resources, Inc. (2015 and 2016); Sanborn (2015).

December 23, 2020

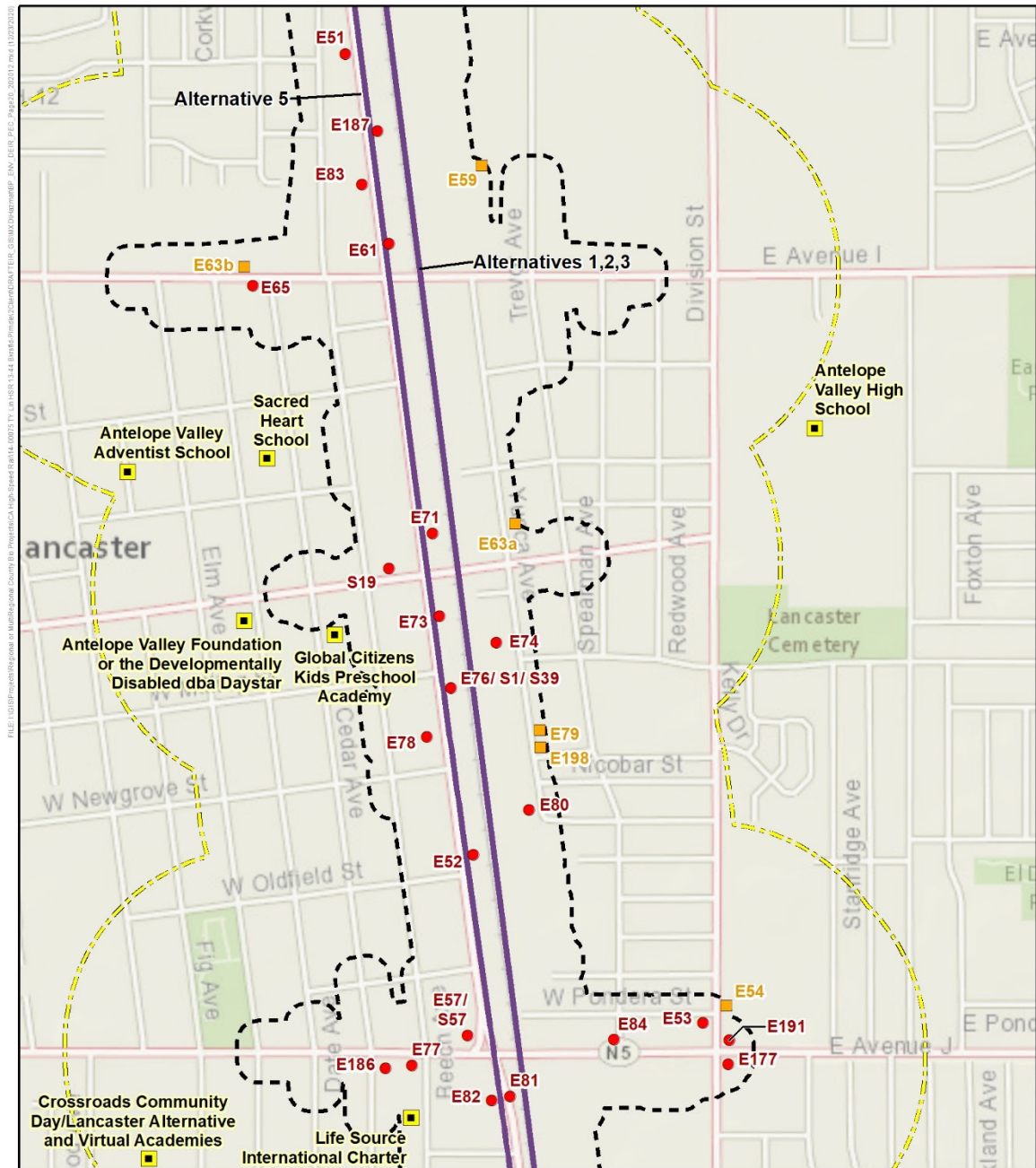


Sites labeled S# are from the Sanborn maps.
 Sites with E# are from the EDR database (Authority 2016: 6-14 to 6-47).

Sheet 19 of 21



Figure 3.10-A-1 PEC Sites in the RSA (Sheet 19)



SOURCE: Esri/National Geographic (2019); Engineering data from CHSRA (7/2020); Environmental Data Resources, Inc. (2015 and 2016); Sanborn (2015).

January 25, 2021

 	<ul style="list-style-type: none"> Bakersfield to Palmdale (Centerlines) Study Area (150 ft buffer of construction footprint) Educational Facility Study Area (0.25 mile buffer of construction footprint) Educational Facilities 	<p>Ranking</p> <ul style="list-style-type: none"> High Risk Moderate Risk
----------	---	--

Sites labeled S# are from the Sanborn maps.
 Sites with E# are from the EDR database (Authority 2016: 6-14 to 6-47).

Sheet 20 of 21

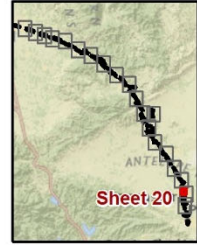
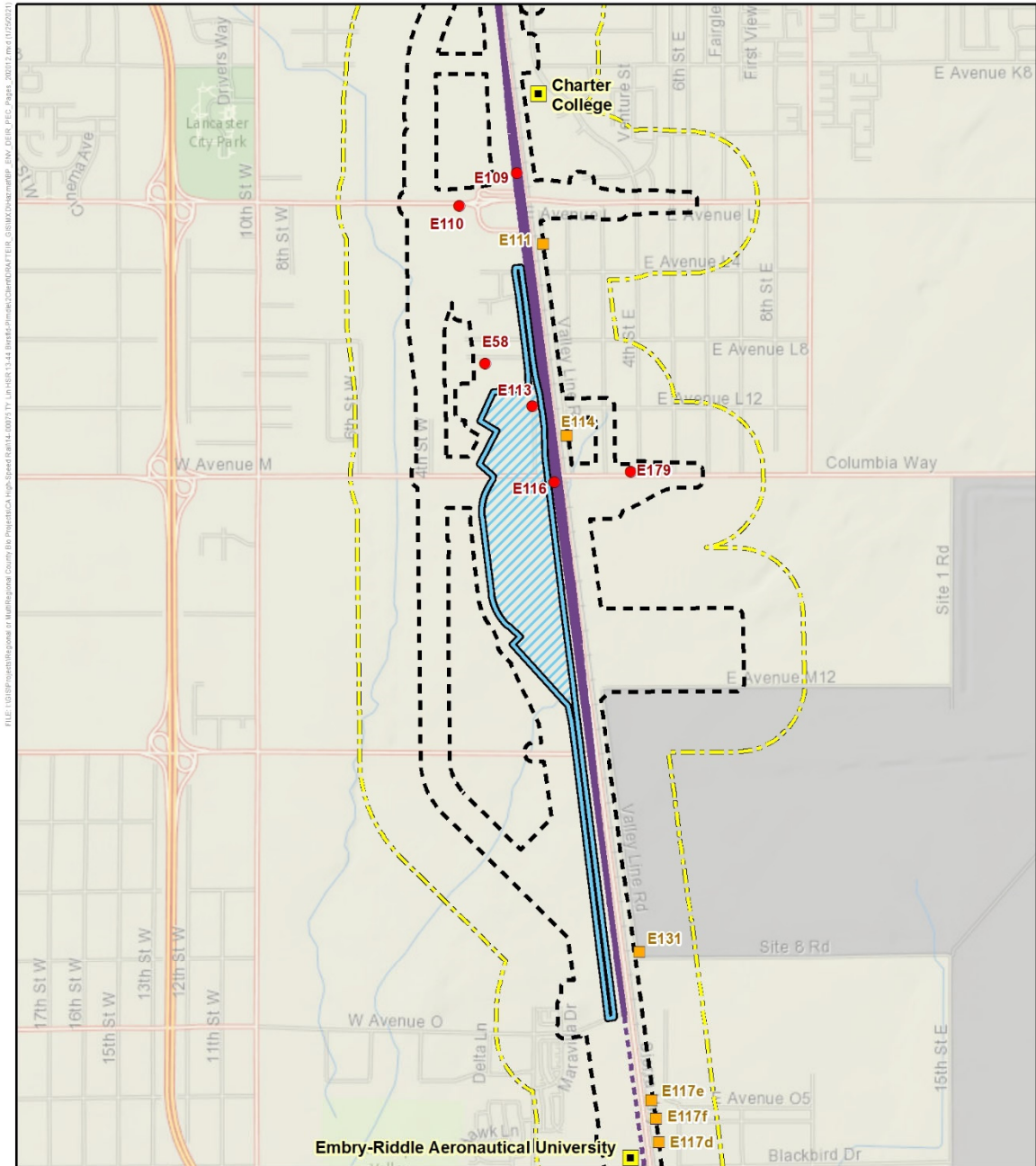


Figure 3.10-A-1 PEC Sites in the RSA (Sheet 20)



SOURCE: Esri/National Geographic (2020); Engineering data from CHSRA (7/2020); Environmental Data Resources, Inc. (2015 and 2016); Sanborn (2015). March 17, 2021

Legend

- Study Area (150 ft buffer of construction footprint)
- Educational Facility Study Area (0.25 mile buffer of construction footprint)
- Educational Facilities
- Avenue M LMF/MOWF Site

Ranking

- High Risk
- Moderate Risk

Scale

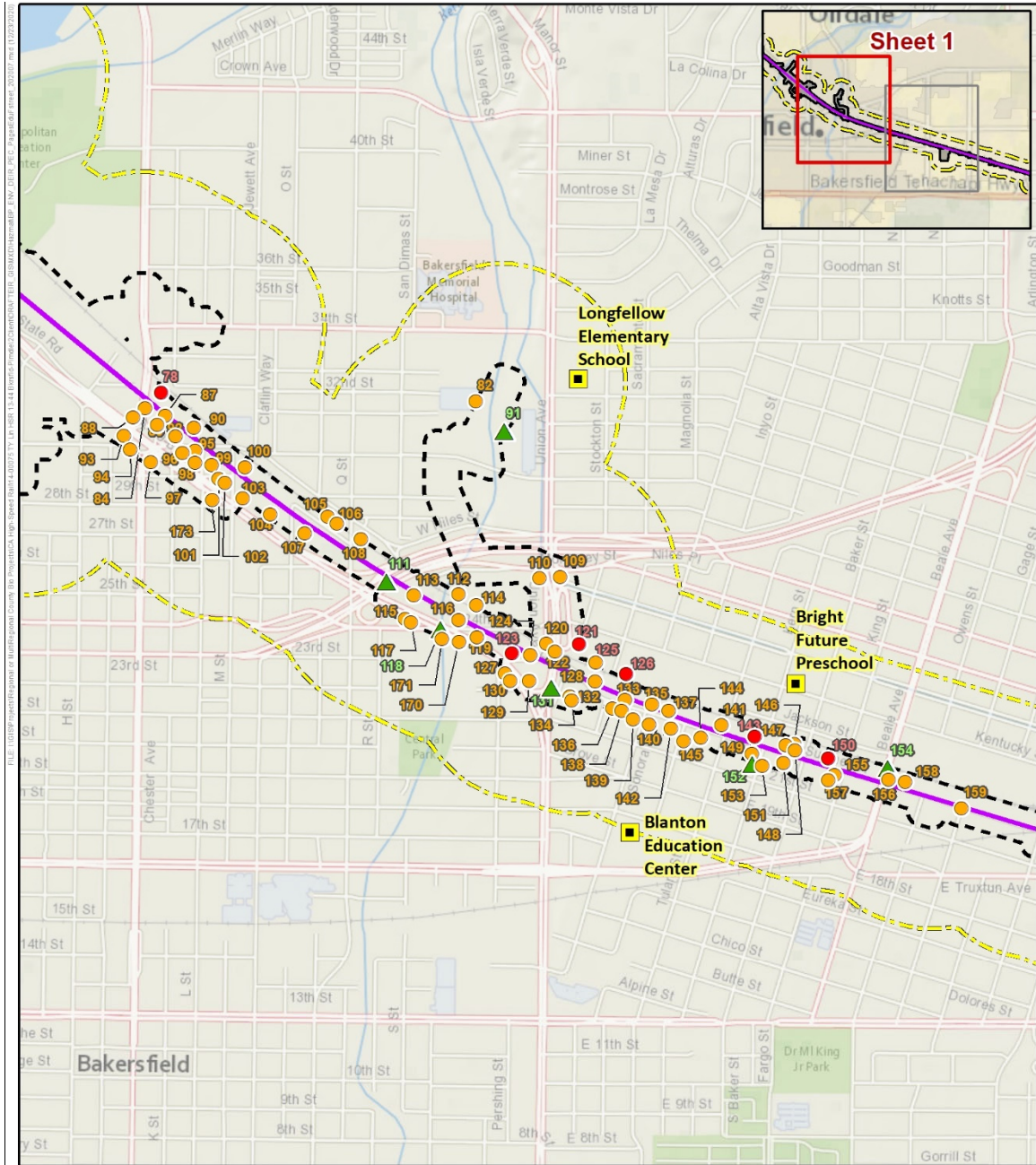
0 1,200 2,400 Feet

0 400 800 Meters

Sites labeled S# are from the Sanborn maps.
Sites with E# are from the EDR database (Authority 2016: 6-14 to 6-47).

Sheet 21 of 11

Figure 3.10-A-1 PEC Sites in the RSA (Sheet 21)

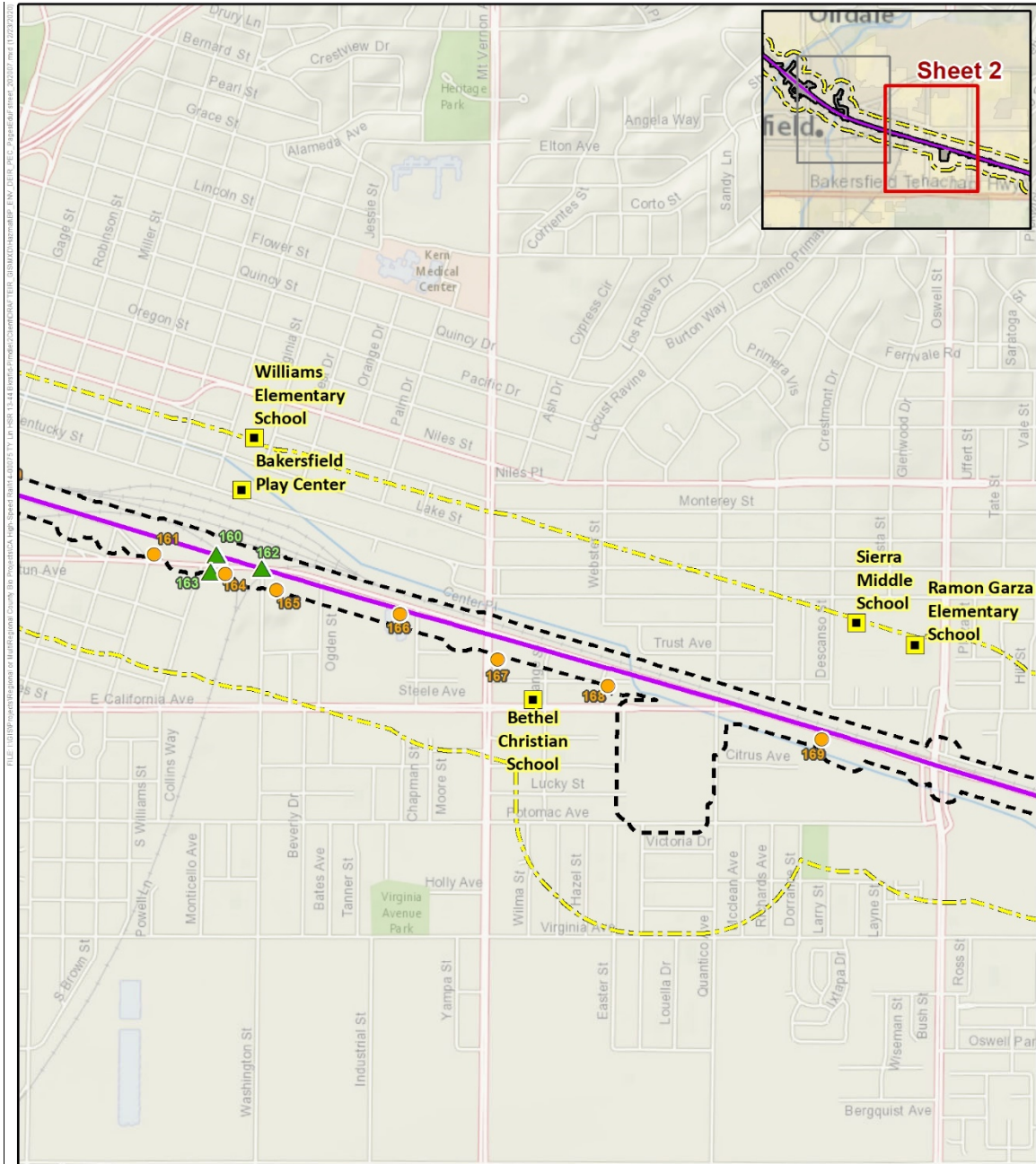


SOURCE: Esri/National Geographic (2019); Kern County (2015); Phase 4B Engineering data from CHSRA, (07/2020); December 23, 2020
 CDE(2015); Environmental Data Resources, Inc. (2015); Sanborn (2015).
 Sheet 1 of 2

<ul style="list-style-type: none"> — Alignment Centerlines F Street Station Connection Study Area (150 ft Buffer of Construction Footprint) Educational Facilities F Street Station Connection Educational Facility Study Area (Quarter-mile Buffer of Construction Footprint) 	<p>Hazardous Waste and Materials Site</p> <ul style="list-style-type: none"> ● High ● Medium ▲ Conceivable potential environmental concern
---	--

PEC # labels correspond to the "Map ID" on table 5-1 in the F-B LGA EIR Report and the May 2014 EIR

Figure 3.10-A-2 PEC Sites in the Bakersfield Station RSA (Sheet 1)



SOURCE: Esri/National Geographic (2019); Kern County (2015); Phase 4B Engineering data from CHSRA, (07/2020); CDE(2015); Environmental Data Resources, Inc. (2015); Sanborn (2015).

December 23, 2020

Sheet 2 of 2

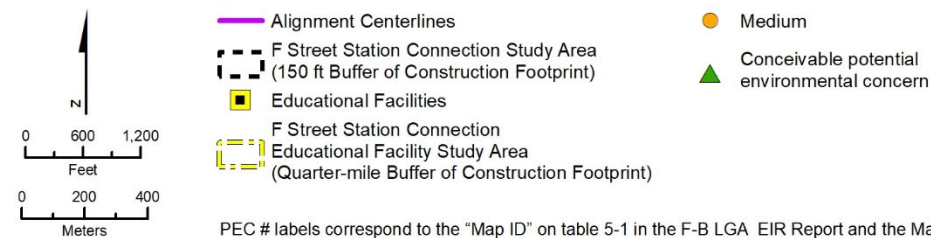
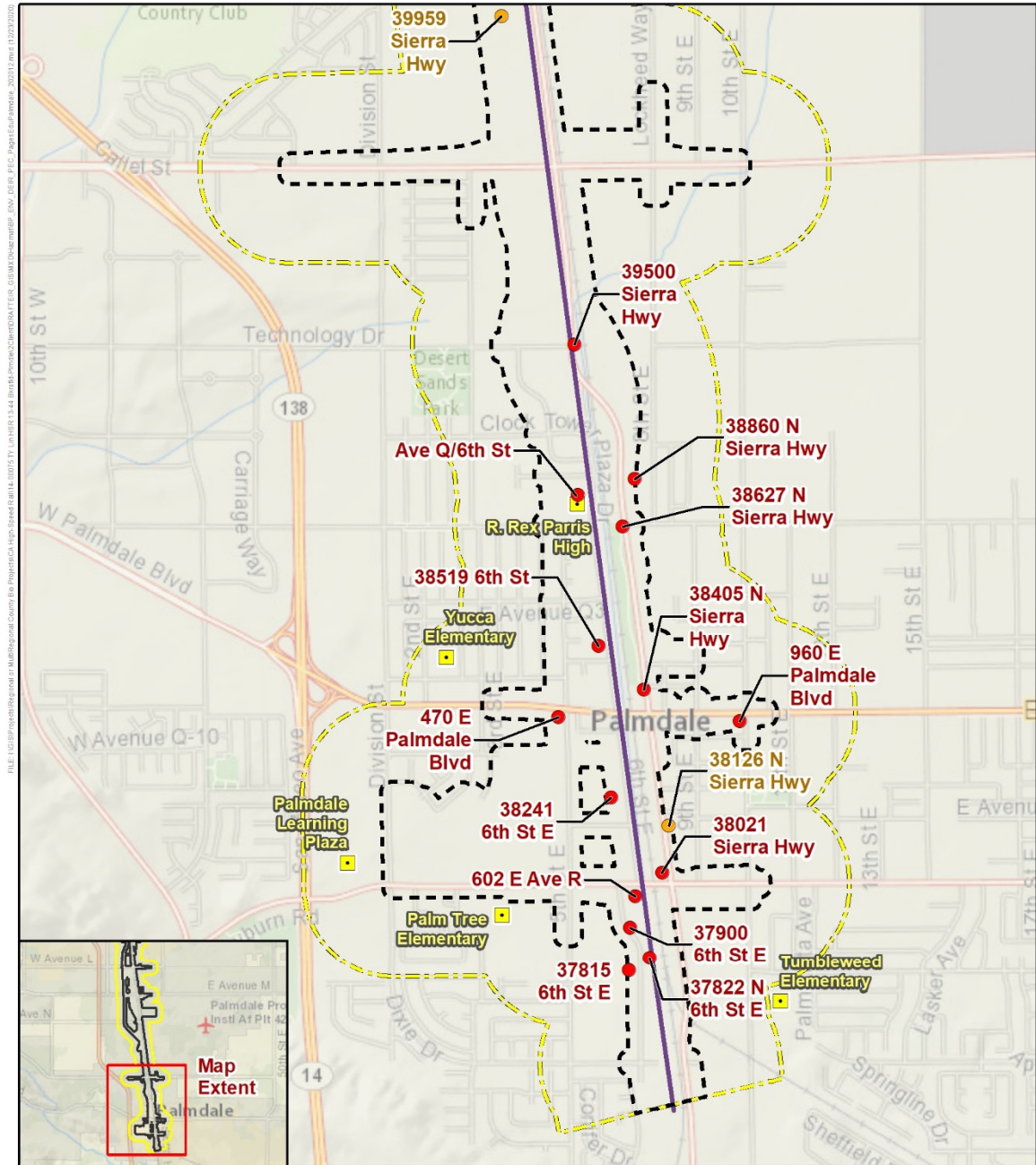


Figure 3.10-A-2 PEC Sites in the Bakersfield Station RSA (Sheet 2)



SOURCE: Esri/National Geographic (2019); Kern County (2015); Engineering data from CHSRA, (07/2020); CDE(2015); Environmental Data Resources, Inc. (2015); Sanborn (2015).

December 30, 2020

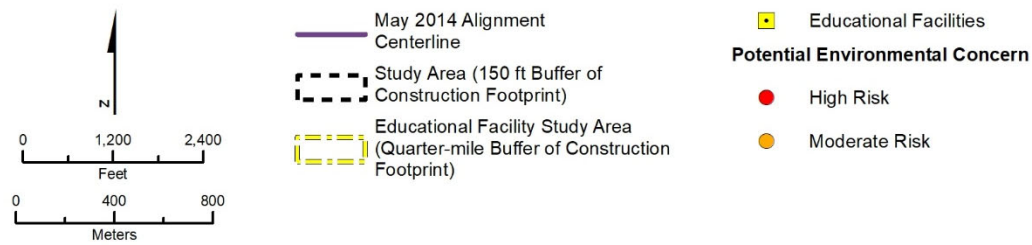


Figure 3.10-A-3 PEC Sites in the Palmdale Station RSA